

2026 CASE STUDY SUMMARY BOOK



About This Book

Summary Book Overview

Since 1990, Hanwha Vision has pioneered the global video surveillance industry through its mastery of world-class optical design, image processing, and cybersecurity.

Beyond mere monitoring, our vision solutions leverage cutting-edge technologies, like edge AI and Cloud, to quickly and efficiently transform collected data into valuable insights, empowering customers with actionable intelligence.

This book showcases real-world examples of why companies, in nearly every industry, are choosing Hanwha Vision's security systems and AI-powered vision solutions to:

- Enhance security for employees and customers
- Reduce costs
- Improve customer/shopper experience
- Maximize operational efficiency

For more information, please visit [HanwhaVision.com](https://www.hanwhavision.com)

User Guide

Hanwha Vision 2026 Case Study Summary Book is an interactive PDF. Simply click the icons at the top of each page to navigate to the specific section you're interested in.

Value Proposition

Our Solutions Can:

Create safer environments for employees, customers, and partners

Enable easy monitoring for your entire operations from entrances/exits, parking lots, reception areas, operating centers, shipping, etc.

Provide deeper insights into the customer experience and the efficiency of your staff and operations, with license-free AI data analytics

Deliver high-quality images even under poor light and extreme weather conditions

Help you make more informed business decisions to reduce costs, delight customers, and increase profits



INNOVATION LEADER

Since 1990, Hanwha Vision has set the benchmark for innovation in video surveillance. Today, we are once again, leading the industry's transition, as we accelerate the launch of new intelligent camera solutions that are AI-powered, cloud-enabled and deliver data, instantly, at the edge.



SUPPLY CHAIN EXCELLENCE

As a direct manufacturer, Hanwha Vision owns and operates facilities to design, develop, test, and build all of our own products. This is a significant supply chain advantage that we have over many competitors who typically outsource production to various third-parties.



INDUSTRY EXPERTISE

Our industry experts deliver consultative support and training to guide partners and end-use customers through every phase of a project – from the earliest planning stages, execution, and post-installation analysis. Their deep understanding of all industry challenges and regulations enable them to create the most cost-effective video surveillance solutions.



FLEXIBLE FORM FACTORS

Hanwha Vision offers a wide selection of video surveillance solutions in many rugged form factors. This flexibility allows our partners and end-use customers to address any security and surveillance needs, and easily comply with all building, health, and safety requirements.



CYBERSECURITY HARDENED

Hanwha Vision's innovative hardware technologies and usage of cybersecurity best practices ensure that our network and IP camera devices meet the highest levels of security achievable.

Our Customer

Key case study location



Our Verticals



01
Retail

[Click Here](#) →



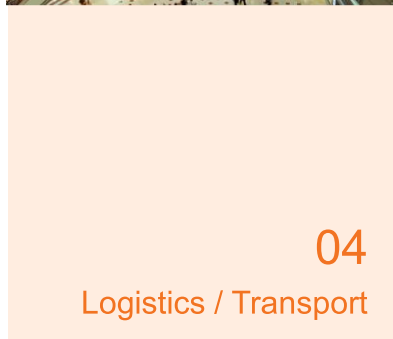
02
City Surveillance

[Click Here](#) →



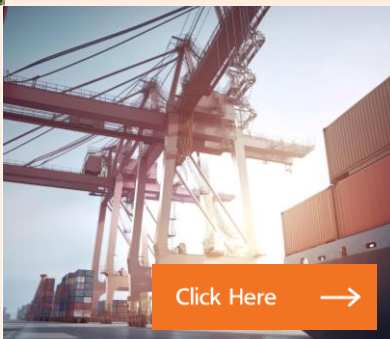
03
Financial Services

[Click Here](#) →



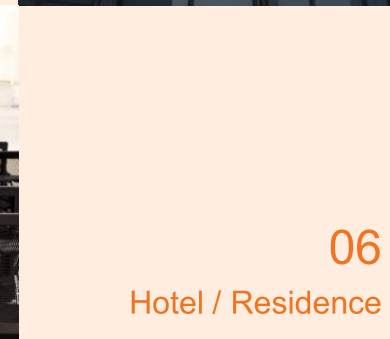
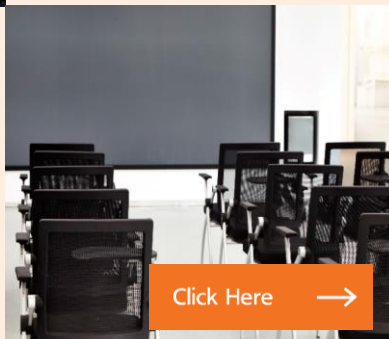
04
Logistics / Transport

[Click Here](#) →



05
Education

[Click Here](#) →



06
Hotel / Residence

[Click Here](#) →



07
Commercial Buildings

[Click Here](#) →



08
Healthcare



[Click Here](#) →



09
ETC

[Click Here](#) →




Case Studies Overview

No	Vertical	Country	Case Study	Year of Installation (or Announcement)
	Retail	Türkiye	ATÜ Duty Free	2025
		US	Altitude	2025
		US	MOD Pizza	2023
		US	Justice Cannabis	2023
		US	Kirkland's Home Décor	2020
		Vietnam	Innisfree in Ho Chi Minh and Da Nang	2020
		Austria	STORE SAFE PEOPLE	2020
	City Surveillance	US	GALE Project	2025
		Portugal	Ericeira	2025
		US	Media, Pennsylvania	2025
		US	City of Atlanta	2025
		Argentina	Vicente López	2025
		UK	The London Borough of Hammersmith and Fulham	2025
		UK	Thames Valley Police	2025
		UK	City of Edinburgh	2025
		US	Naval Park	2024
		US	Dickson County Sheriff's Office	2024
		Denmark	Vorbasse Market	2023



Case Studies Overview

No	Vertical	Country	Case Study	Year of Installation (or Announcement)
	City Surveillance	Italy	Piazza Lucio Dalla	2022
		Italy	Pedemontana Veneta highway	2022
	Financial Services	US	VyStar Credit Union	2022
		US	Wilson Bank & Trust	2021
	Logistics / Transport	France	Eurobox	2025
		Korea	CJ Logistics	2025
		Korea	CJ Logistics Enhances Safety Management System with AI Cameras	2025
		France	DHL Express	2025
		Switzerland	Swiss Federal Railways	2025
		US	HD Supply	2024
		Türkiye	Yalova Ro-Ro Port Terminal	2024
		Germany	Merklingen train station	2024
		Türkiye	Assan Port	2022
		Türkiye	Rize–Artvin Airport	2022
		UK	East Midlands Logistics Centre	2022
		US	Western Michigan University	2025
	Education	US	Putnam City School District	2022
		UK	Glasgow Science Center	2021

Case Studies Overview

No	Vertical	Country	Case Study	Year of Installation (or Announcement)
	Education	US	South Pittsburg High School	2020
		US	Army and Navy Academy	2020
	Hotel / Residence	France	DOMITYS	2025
		France	Mercure Hotel	2025
		UK	Midland Heart Housing Association	2025
		France	DomoFrance	2024
		Hungary	MVM Group	2023
		US	We-Ko-Pa Casino Resort	2021
		US	Gaylord Opryland Resort and Convention Center	2021
		US	Star of Hope Mission	2021
		US	Music City Center	2025
	Commercial Building	France	OK Corral Park	2025
		Czech Republic	Seznam Data Centers	2024
		France	Stade des Alpes	2023
		Poland	Centre for Contemporary Art, Ujazdowski Castle	2022
		UK	Brooklands Museum	2022
		UK	MFG's Electric Vehicle (EV) Charging Hubs	2021

Case Studies Overview

No	Vertical	Country	Case Study	Year of Installation (or Announcement)
	Healthcare	Türkiye	Adnan Menderes University Hospital	2025
		Türkiye	Acıbadem Healthcare Group	2025
		Korea	Yongin Severance Hospital	2020
	ETC	France	Palais des Sports de Toulon	2025
		Colombia	Drummond Colombia	2025
		US	Beat the Bomb	2025
		Türkiye	Denizli Pamukkale Municipality	2025
		France	CREPS	2024
		Italy	BFP Service	2024
		Iceland	MBL (Live streaming of volcanic activity)	2021

1

Hanwha Vision in

Retail

Today, Hanwha Vision's suite of intelligent security and video surveillance solutions are relied on by major fast-food chains, iconic global and regional retailers, shopping centers, cannabis distributors, and more.

ATÜ Duty Free

Türkiye

This case study demonstrates how Hanwha Vision's reliable camera hardware provides the retail sector not only with video recording but also with actionable business intelligence that delivers value.



Challenge


- ➔ ATÜ Duty Free needed to implement a comprehensive security, operational efficiency, and business intelligence security system for the new Antalya Airport terminal due to high traffic and a complex store layout.

Solution

- ➔ Hanwha Vision provided over 1,450 high-performance cameras and deep-learning AI applications, flawlessly integrated by Arte Teknoloji on the Genetec Video Management System (VMS) platform.

Result

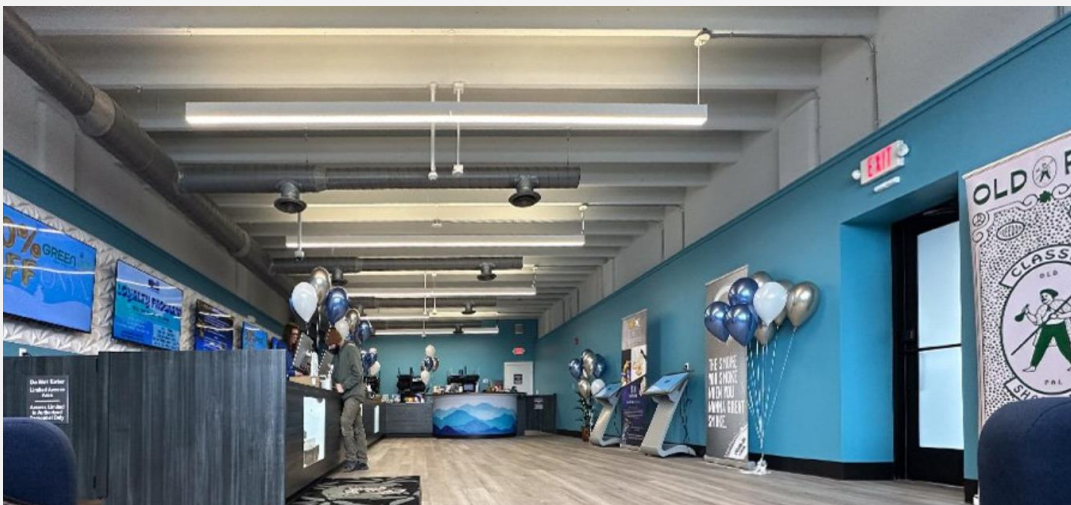
- ➔ The new system delivered precise inventory control, enhanced customer experience via reduced waiting times, more efficient staff deployment, and store optimization through actionable business intelligence.

 [Read full story here](#)

Altitude US

“What I like about Hanwha Vision is they’re always innovating. They look at what the industry needs and then they respond to those needs, whether it’s AI, camera coverage, or analytics.”

– Tony Gallo, Managing Partner at Sapphire Risk



Challenge


- ➔ Altitude needed comprehensive location-wide surveillance to ensure employee and customer safety in a high-value, cash-heavy environment, while also adhering to strict cannabis industry regulations.

Solution

- ➔ They installed Hanwha Vision cameras equipped with AI-driven advanced analytics, supported by Wisenet WAVE Video Management System.

Result

- ➔ They now benefit from enhanced on-site and remote security management, allowing staff to quickly review footage for incident resolution and creating a safer environment with a scalable system for future growth.

 [Read full story here](#)

MOD Pizza US

“Hanwha Vision has been a great partner, whether it's helping us find a different camera system, placing something in a different area, or using technology in a way that we hadn't previously thought of.”

— Jason Swanson, Director of Asset Protection for MOD Pizza



Challenge


- With more than 500 company-operated and franchised locations across the U.S. and Canada, MOD Pizza wanted to add the latest security and surveillance technologies to its environment.

Solution

- MOD Pizza deployed Hanwha Vision solutions including Q series and X series cameras, a mix of dome and 360-degree fisheye models to cover larger areas.

Result

- MOD Pizza enhanced ability to deter and resolve in-store incidents involving customers and Squad members as well as “slip and fall” accidents or crashes in the parking lot.
- The MOD team can respond faster to police requests for surveillance footage, whether related to in-store events or activities occurring in the immediate areas surrounding a MOD location.

 [Read full story here](#)

Justice Cannabis US

“The cameras were so clear we could see the license plate numbers.
We saw hand-to-hand dealing. It was phenomenal.”

– Stuart Johnson, National director of security for Justice Cannabis



Challenge

- ➔ Justice Cannabis, which operates cultivation, manufacturing, labs, and retail across several states, needed a security solution to comply with diverse, complex state laws concerning video retention, camera angles, and access control.

Solution

- ➔ The company installed various Hanwha Vision cameras, including 5MP domes, 4K AI cameras, fisheye, varifocal, and multi-directional (PTRZ) models, across their facilities. They use P series AI cameras to search for specific personal attributes like clothing color, accessories, age, and gender.

Result

- ➔ Hanwha Vision's cameras have helped identify illegal activity like straw purchasing while increasing ease of use.

 [Read full story here](#)

Kirkland's Home Décor US

"The wide-angle capability, as well as the camera's quality, is what sold us on Hanwha Vision. We're getting the best views possible, and they're allowing us to see the entire sales floor, which is exactly what we wanted and needed."

— Saraya Charlton, Kirkland's Loss Prevention Investigator



Challenge

- With over 400 stores, Kirkland's needed a remotely accessible, IP-based security solution to improve loss prevention investigations, enhance safety, and provide management with clear pictures, data analytics, and minimal bandwidth usage.

Solution

- To meet these goals, Kirkland's deployed a Hanwha Vision IP solution managed by Salient Video Management System (VMS). They installed 1,800 X series XNV-6011 2MP HD dome and Lite vandal-resistant dome cameras across 200 locations, including a distribution center and e-commerce building.

Result

- The Hanwha Vision-Salient solution simplifies Kirkland's loss-prevention investigations by allowing team members to easily pull recorded video from any camera via VMS, replacing slow analog DVR extraction. Furthermore, Hanwha Vision's WiseStream compression delivers clear images while conserving valuable bandwidth.



[Read full story here](#)

Innisfree in Ho Chi Minh and Da Nang Vietnam

“We have high expectations on Hanwha Vision’s retail solution as it can help identify main customers per store and sophisticate our business strategies such as placement of products to achieve more effective store operation.”

- Officials at Innisfree



Challenge

- Korea's leading beauty brand, Innisfree, expanded into the Vietnamese market, operating 10 stores. The company wanted to use visual data of store visitors to make more informed business decisions that elevate sales and improve the customer experience.

Solution

- Innisfree installed Hanwha Vision's Retail Insight v2.0 solution, featuring fisheye and dome cameras, in their Ho Chi Minh and Da Nang stores. Retail Insight provides valuable business intelligence for franchise retail, using visual data for people counting and generating Heatmaps with timelapse to measure customer traffic and dwell times.

Result

- Innisfree store operators use this information (including visitor count, traffic analysis, and in-store hotspots) to make timely product placement decisions and identify popular products. Retail Insight also enables centralized management and integrated monitoring across multiple stores, allowing store status and data to be checked in real-time via mobile devices.

 [Read full story here](#)

STORE SAFE PEOPLE

Austria

“As well as being completely satisfied with the quality of the captured images, control room operators have said they are also impressed with how simple it is to take full advantage of the innovative functionality built into the Hanwha Vision cameras and VMS.”

– Vadasz Richard, Chief Executive Officer, Greystone (Hanwha Vision's STEP partner)



Challenge


- ➔ STORE SAFE PEOPLE, a retailer specializing in outdoor sports, survival equipment, and clothing, must protect its high-quality products by deterring and detecting intruders and thieves.

Solution

- ➔ To provide high-quality video evidence, 17 Hanwha Vision IP network cameras were deployed in the new Wiener Neustadt store. The installation includes 4K IR domes (with 12MP resolution and auto-tracking) and mini fisheye cameras (offering four display modes). Built-in people counting and heatmap analytics help "STORE SAFE PEOPLE" monitor store efficiency by linking footfall data to sales.

Result

- ➔ Hanwha Vision cameras helped STORE SAFE PEOPLE to reduce theft, identify intruders and thieves, and achieve the highest levels of security at the new store.

 [Read full story here](#)

2

Hanwha Vision in

City Surveillance

Public safety professionals value Hanwha Vision's City Surveillance Solutions for their ability to protect cities, government buildings, tourist attractions, and more. Along with exceptional, high-quality images, our AI-powered cameras precisely monitor pedestrian and vehicle traffic, quickly identifying criminal behavior or other suspicious activities, speeding up incident responses and investigations.

GALE Project

US

“This system was designed specifically based off floods that we’ve been prone to in the past. The early alert application is a massive opportunity, especially if we’re able to train the AI model to monitor water flow, water levels, and tides. And these cameras play a big part in that.”

– Jay Kriner, Founder/CEO, GALE Project



Challenge

- ➔ Traditional, multi-system surveillance was inefficient and reactive, compounded by the time and resource challenges of developing advanced new drone-monitoring and safety solutions from scratch.

Solution

- ➔ GALE adopted Hanwha Vision’s PTZ cameras—featuring integrated AI analytics, cloud connectivity, and a turnkey software platform—to build an all-in-one modular system with early alerts and a drone dock.

Result

- ➔ Using Hanwha Vision’s turnkey technology significantly reduced GALE’s production and software-development time, accelerating the company’s time to market and enabling the shift to a real-time, AI-driven, proactive public safety system.

[Read full story here](#)

Ericeira Portugal

Local installer Soltrafego undertook a detailed technical study that identified the need for intelligent video surveillance and traffic analysis. Hanwha Vision was chosen due to its effective and robust cameras.



Challenge


- ➡ The town faced traffic congestion and accident risks during its busy summer season, especially at pedestrian crossings on the main national road.

Solution

- ➡ An intelligent traffic management system using Hanwha Vision AI cameras was installed to automatically adjust traffic light timings and pedestrian crossing signals based on real-time vehicle and people-counting data.

Result

- ➡ The project improved traffic and pedestrian flow, reduced delays and accident risks, and now serves as a pilot model for neighboring towns.

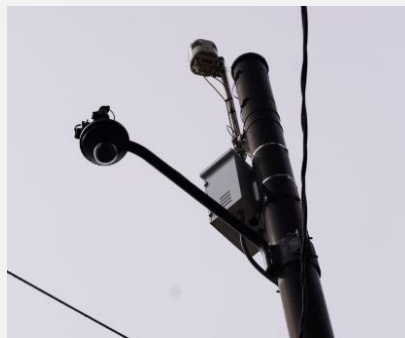
 [Read full story here](#)

Media, Pennsylvania

US

“Every technology you can have is in this system. It’s all bridged within the Hanwha Vision WAVE platform. The next phase is leveraging the system they have to do something new. That’s the beauty of WAVE. It’s not just surveillance, it’s not just VMS, it’s more.”

– Eric Burroughs, President, Phoenix Security Systems



Challenge

- The town needed a reliable, high-quality, and aesthetically discreet surveillance system to replace its aging network, which suffered from frequent failures, poor image clarity, and limited coverage during large public events.

Solution

- The borough collaborated with system integrator Phoenix Systems to install a citywide network using Hanwha Vision cameras and the Wisenet WAVE Video Management System (VMS) for centralized management and deployment.

Result

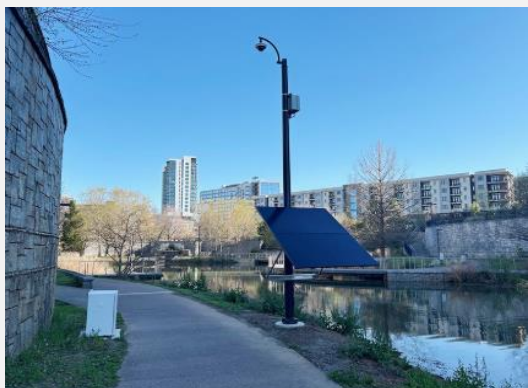
- The new system provides officers with clear, reliable video that significantly improves situational awareness and the solvability rate for incidents, while also enhancing safety and protecting the borough from false liability claims.

[Read full story here](#)

City of Atlanta US

“The cameras’ pinpoint accuracy and visual clarity help us to quickly retrieve footage, conduct research, and assist in investigations. This capability provides residents with peace of mind, knowing that their parks are covered by a comprehensive surveillance system.”

– Anthony Jones, Director of Public Safety at DPR, City of Atlanta



Challenge


- ➔ The City of Atlanta's Department of Parks & Recreation (DPR) initiated a security camera upgrade to address growing public safety concerns in city parks.

Solution

- ➔ The City worked with NetPlanner Systems to select Hanwha Vision as its primary camera provider due to proven performance, quality, reliability, and support.

Result

- ➔ With enhanced video quality and broader coverage, Atlanta's new park cameras are boosting public confidence and serving as a model for future collaborations between city management and law enforcement on public safety.

 [Read full story here](#)

Vicente López Argentina

“From 2012, we thought of a video solution focused on the protection of our neighbours. However, in 2020, we decided to move forward with an innovative video system based on Artificial Intelligence applied to urban security. Hanwha Vision stood up as a value-added provider for this kind of robust solutions.”

– Santiago de Jesús, Secretary of Security, Vicente López



Challenge

- ➔ The city of Vicente López aimed to modernize public services and become a smarter, safer city.

Solution

- ➔ They partnered with Hanwha Vision and Milestone Systems to implement a new system using AI-powered video to collect and analyze data.

Result

- ➔ The new system has improved security, optimized data collection, and transformed the city into a safer, more connected environment.



[Read full story here](#)

The London Borough of Hammersmith and Fulham

UK

“The investment H&F Council is making to enhance CCTV operations underlines its clear commitment to consistently improve the quality of the environment for people who live there.”

– Tony Oliver, Head of Physical Security at North



Challenge

- ➔ Hammersmith and Fulham needed to upgrade its outdated analog surveillance for better public safety and comprehensive coverage.

Solution

- ➔ They installed Hanwha Vision's advanced multi-directional AI cameras, integrated IoT sensors, and enabled inter-agency data sharing.

Result

- ➔ The borough now has a state-of-the-art surveillance system that significantly improves safety, scalability, and wide-area coverage.



[Read full story here](#)

Thames Valley Police

UK

“We’ve immediately seen the benefit of our investment in equipment and CCTV operators, with the police now much better equipped to deter and detect crime across the Thames Valley.”

— Matthew Barber, Thames Valley Police & Crime Commissioner (PCC)



Challenge

- ➔ Local authorities faced increasing financial constraints that made it difficult to maintain and effectively operate CCTV systems.

Solution

- ➔ Thames Valley Police partnered with Hanwha Vision and Genetec to centralize CCTV ownership and monitoring under a police-owned system, utilizing AI cameras.

Result

- ➔ This collaboration has improved CCTV coverage and quality, enhanced police access to evidence, and delivered significant cost efficiencies for participating authorities.

[Read full story here](#)

City of Edinburgh UK

Hanwha Vision has been hardening its cybersecurity measures for many years with the NDAA, UL CAP Certification, and a dedicated security vulnerability response team “S-CERT”.



Challenge

- ➔ The City of Edinburgh needed to modernize its security and surveillance infrastructure to safeguard citizens and visitors, manage traffic effectively, and transition toward a Smart City Operations Center capable of integrating real-time data for improved city planning.

Solution

- ➔ A new control center was established, incorporating over 100 Hanwha Vision IP cameras managed by a Genetec Video Management System (VMS). The solution prioritized cybersecurity (NDAA compliance) and uses WiseStream compression for bandwidth optimization.

Result

- ➔ The system delivers comprehensive coverage and real-time analytics, significantly improving situational awareness and response times for operators. The use of multi-directional cameras and on-device analytics resulted in improved cost-efficiency and enhanced operational intelligence for monitoring foot traffic and city movement.

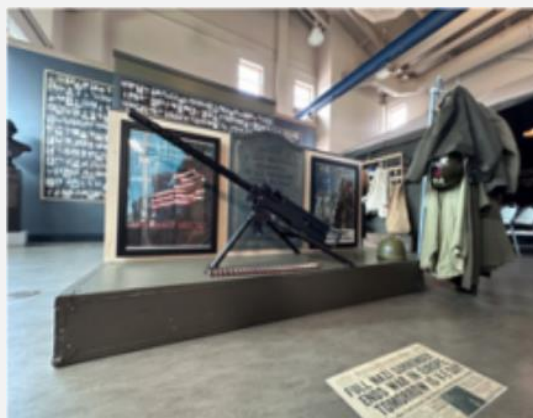


[Read full story here](#)

Naval Park US

“Their new 4K multi-sensor cameras are first class and as far as 360° coverage, with the ability to monitor several areas, Hanwha Vision was the first choice.”

– Erik Schiefer, Account Executive at Seibold Security



Challenge


- ➔ The park's open, unfenced grounds led to frequent vandalism, while the extreme cost of burying cables made traditional security upgrades financially unfeasible.

Solution

- ➔ The park installed Hanwha Vision 4K AI cameras via a wireless network to provide comprehensive 360° surveillance without the need for expensive infrastructure.

Result

- ➔ This high-resolution system provides law enforcement with actionable evidence to identify suspects while maintaining a welcoming and secure environment for visitors.

 [Read full story here](#)

Dickson County Sheriff's Office

US

"I have three rules: everybody goes home at the end of their shift, nobody dies, and we stay out of federal court. These cameras help us do that. If a picture is worth a thousand words, then the right video is the whole book."

— Dwayne Hayes, Chief Jailer, Dickson County



Challenge

- ➔ The Sheriff's Office required a critical security upgrade due to an outdated surveillance system that provided poor video quality, failed to detect illegal activity, and was known to criminals operating on the premises.

Solution

- ➔ They installed Hanwha Vision cameras and the WAVE Video Management System (VMS), focusing on comprehensive coverage, hardening against network intrusion, and implementing License Plate Recognition (LPR) for vehicle tracking and alerts.

Result

- ➔ The new system provides high-quality video evidence for investigations, dramatically increased safety and security (detering on-site crime), reduced liability, and improved the efficiency of daily jail operations via the intuitive, remotely accessible platform.



[Read full story here](#)

Vorbasse Market Denmark

The team at Vorbasse Market turned to Hanwha Vision to provide an intelligent, easy-to-use, video surveillance system for 24/7 monitoring of the market's nearly 250,000 annual visitors.



Challenge


- Vorbasse Market needed a way to manage queues, crowds and bottlenecks in critical areas around the market while also ensuring the safety of visitors, traders, animals, and equipment.

Solution

- In total, 55 X and P Series cameras were installed across the site, with 45 of these XNV-6080R vandal-resistant IR dome cameras which are complemented by PND-A9081RV AI dome cameras.

Result

- As well as protecting visitors, video data insights are being shared with Vorbasse market leadership to inform future event planning. By consolidating all footage into a single place, operators now have a greater understanding of activities across the market, when open and closed.

 [Read full story here](#)

Piazza Lucio Dalla Italy

“Hanwha Vision cameras play an important role in keeping people using the busy piazza safe and secure, but also integrate with other systems, including Genetec’s, to improve collaboration across departments and agencies.”

– Ing. Alberto Nuzzo, Head of Office ‘Digital Infrastructure’ presso Comune di Bologna.



Challenge

- ➔ The Piazza Lucio Dalla hosts a range of events and entertainment, including concerts, theatre performances, street food, and children’s workshops. As part of the restoration, the city authorities realized the need for a video surveillance system to monitor the square in all conditions, morning and night.

Solution

- ➔ Hanwha Vision’s Q series PTZ cameras were selected for their durability, image quality, and integration with the existing control room monitoring system. They were installed across the square, enabling easy pan, tilt, and zoom to track events or persons of interest.

Result

- ➔ Hanwha Vision cameras play an important role in protecting the people visiting the piazza. They also seamlessly integrate with other systems, including Genetec’s, to improve collaboration across departments and agencies.



[Read full story here](#)

Pedemontana Veneta highway Italy

“Using the performing combination of Sprinx’s AI video analytics and the WAVE platform, we are able to instantly detect incidents along hundreds of kilometers of road to provide a faster response, while the insights it has provided into how the highway is being used are proving invaluable in maximizing the efficient use of the road.”

– Gerando Capezzuto, SIS scpa



Challenge

- ➔ A major commercial region of Italy needed effective video technology that would keep traffic flowing while providing operators with the information they need to effectively manage the SPV, the toll highway built to address traffic challenges.

Solution

- ➔ Hanwha Vision partners installed 600 Hanwha Vision 32x zoom PTZ dome cameras along the SPV route, all managed by WAVE Video Management System (VMS). These cameras integrate with Sprinx’s ‘trafix.ai’ (using deep learning) to automatically detect traffic incidents in real-time, immediately alerting highway operators for emergency response.

Result

- ➔ The AI-powered video technology has delivered greater mobility for the region's 4.9 million inhabitants and nearly 500,000 businesses, improving motorist safety and providing operators with insights into effective SPV use.



[Read full story here](#)

3

BANK

Hanwha Vision in

Financial Services

Leading global banks and regional financial institutions put their trust in Hanwha Vision technologies. Our durable, high-performance, AI-powered cameras are used to monitor indoor/outdoor ATMs, protect bank teller stations, and secure storage vaults and armored transport vehicles.

VyStar Credit Union US

"We were simply wowed by how well the Hanwha Vision cameras could accurately capture data in the dark, or in any lighting condition."

— Jeff McDonald, VyStar Security Operations Manager



Challenge


- VyStar needed to deter criminal activity at all branch offices and remote locations. At the same time, they needed to upgrade image quality and performance and enhance data capture and storage processes to comply with state regulations.

Solution

- VyStar chose Hanwha Vision security solutions, equipped with ALPR technology, to safeguard assets, members, and employees. They replaced all existing cameras with various Hanwha Vision models, providing 360-degree coverage inside branches (teller lines, waiting areas, hallways) and on the exterior perimeter (drive-through lanes, ATM stations).

Result

- VyStar improved image quality and performance on their surveillance system. With the new Hanwha Vision cameras, VyStar can now more easily capture fraudulent transactions and turn them over to law enforcement immediately.

 [Read full story here](#)

Wilson Bank & Trust US

“The ability to work with a company that does everything from manufacturing the chipset and camera to developing the software was a game-changer for us. We knew it would give us tremendous peace of mind.”

— Elvis Huff, Assistant Vice-President and Director of Security at Wilson Bank & Trust



Challenge

- The Bank wanted IT-based, PoE (Powered over Ethernet) cameras that could produce high-quality video and did not require licenses. They also wanted DVRs or NVRs that would give them longer-term retention rates, 90 days at a minimum.

Solution

- The installation included panoramic and network IR dome cameras. The PNM-9020V 180° multi-sensor panoramic camera captures high-quality images of large areas at up to 30fps. Interiors utilized the QND-6010R Network IR dome (2MP, 30fps) with built-in motion, tampering, and defocus detection.

Result

- The bank has upgraded the security infrastructure at 40 of its locations with Hanwha Vision cameras. By switching to industry standard PoE, IP-based cameras, the bank has realized significant savings with regards to installation and maintenance costs.



[Read full story here](#)

4

Hanwha Vision in

Logistics / Transport

Hanwha Vision Logistics and Transportation Solutions are used to protect airports, major roadways, maritime ports, and railways.



Eurobox France

“What you can’t keep at home, we protect for you!”

– Xavier Latour, Eurobox Managing Partner



Challenge

- ➔ Eurobox's self-storage rental park faced constant threats from intrusion, theft, and vandalism requiring an efficient video surveillance system.

Solution

- ➔ The company installed a tailored Hanwha Vision system, featuring AI-enabled cameras for LPR, 360° coverage, and 4K detail to enhance monitoring and reduce false alarms.

Result

- ➔ The installation significantly improved site security, enabling close monitoring of logistics, controlled access, and quick detection of intrusion attempts.

 [Read full story here](#)

CJ Logistics Korea

“Since implementing the system, we’ve received a lot of positive feedback from product sellers. They appreciate the faster and more accurate claim processing, and the transparent information sharing, which has really built customer trust.”

– A CJ Logistics official



Challenge


- ➔ CJ Logistics needed a system to integrate video and barcode information to efficiently handle surging parcel volumes and rising customer claims.

Solution

- ➔ They installed Hanwha Vision's solution, creating a system that links packing video with barcode information. This allows for quick verification when claims arise.

Result

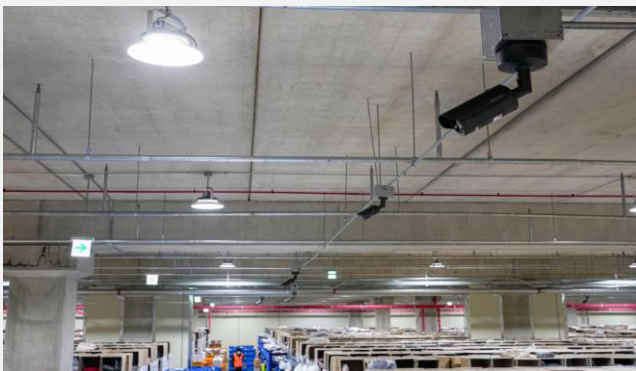
- ➔ They've achieved logistics innovation, boosting operational efficiency and customer satisfaction while building seller trust through transparent claim processing.

 [Read full story here](#)

CJ Logistics Korea

“We’ve prioritized placing AI cameras in areas with a higher concentration of older employees. This allows us to quickly detect incidents and send alerts, helping us secure that critical ‘golden time.’ We fully expect this will lead to a safer working environment by boosting our ability to respond instantly to hazardous situations.”

– A CJ Logistics official



Challenge

- ➔ CJ Logistics needed to reduce safety risks and establish an efficient monitoring system across their extensive logistics centers.

Solution

- ➔ They installed Hanwha Vision AI cameras and worker safety AI software, building an intelligent video surveillance system that automatically detects hazardous situations.

Result

- ➔ They've accelerated their transition to a smart logistics center, ensuring worker safety and boosting monitoring efficiency with an AI-powered system.



[Read full story here](#)

DHL Express France

“Hanwha Vision is clearly a prominent player in the video surveillance sector today. Their cameras provide some of the best features on the market, making their solution an obvious choice for us.”

– Fabien Vimont, DHL Express Security Director



Challenge

- ➔ DHL Express sought reliable solutions to protect its infrastructure, employees, and customer parcels.

Solution

- ➔ They chose Hanwha Vision cameras due to their wide selection, excellent after-sales support, and five-year warranty.

Result

- ➔ Hanwha Vision solutions allowed DHL Express to strengthen its security systems, ensure better traceability of parcels, and effectively investigate incidents.

 [Read full story here](#)

Swiss Federal Railways (Schweizerische Bundesbahnen)

Switzerland

“We are very satisfied with the performance of the Hanwha Vision cameras. They help us to secure our stations and buildings, optimise processes in rail operations, improve public safety and ensure that our trains run on time.”

– Chei Seung-Kyoo, Technology Video Specialist at SBB



Challenge

- ➔ The SBB video team needed to replace an existing video surveillance system across its rail network.

Solution

- ➔ Hanwha Vision cameras were chosen due to their high performance, intelligent analytics, and attractive pricing.

Result

- ➔ They help SBB to secure stations and buildings, optimize processes in rail operations, improve public safety and ensure that our trains run on time.



[Read full story here](#)

HD Supply US

“Our main vision is protecting people, property, product, and profit. Hanwha Vision has allowed us to do that efficiently and effectively.”

— Patrick Moore Senior Manager of Corporate Security for HD Supply



Challenge


- ➔ Managing surveillance across more than 100 distribution centers required a high volume of cameras, leading to complex installations and frequent points of failure.

Solution

- ➔ The company implemented Hanwha Vision multi-sensor and AI-equipped cameras integrated with the intuitive WAVE Video Management System (VMS) to streamline operations.

Result

- ➔ By using multi-directional technology, HD Supply reduced its exterior camera count by 50%, significantly cutting costs while improving investigative accuracy through AI detection.

 [Read full story here](#)

Yalova Ro-Ro Port Terminal Türkiye

“As a busy international Ro-Ro Port with millions of dollars of stock and equipment, having the best security, that’s intuitive to use and easy to install, was essential.”

- Eyup Tetik, Corporate Sales Manager at ENTPA ELEKTRONİK A.Ş.



Challenge

- ➔ The Yalova Ro-Ro Terminal team was looking for a way to intelligently monitor activities at the port and quickly search footage for investigations if needed. Because of the size of the port – nearly 800,000 square meters (appx. 861,000 feet) - an efficient way to store and deliver video footage back to the control room was required.

Solution

- ➔ The team turned to Hanwha Vision to provide a robust and AI-enabled video surveillance solution comprising 48 PNO-A9081R cameras, 17 XNO-C7083R cameras, and 7 XNP-6400RW cameras.

Result

- ➔ With AI analytics carried out on the device, the cameras provide the on-site Yalova Ro-Ro Terminal security team with alerts only to events that require their attention. This frees them up to focus on other responsibilities, while the cameras constantly scan for relevant objects or possible incidents that require human input.

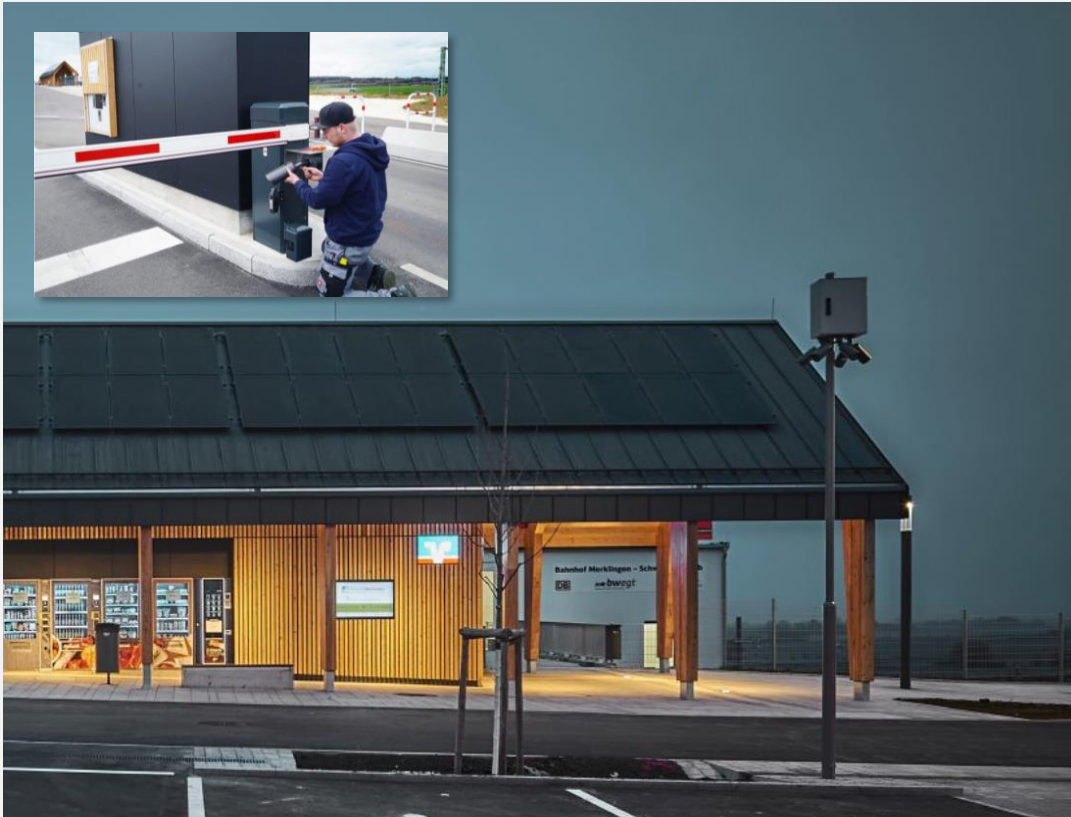


[Read full story here](#)

Merklingen train station Germany

“The performance and quality of Hanwha Vision cameras along with the open WAVE VMS that could work with the in-house AI parking management system made it the logical choice for the Merklingen station project.”

— Andreas Baumann, Managing Director at Reif GmbH



Challenge

- ➔ The world's largest EV charging park required a future-proof, GDPR-compliant security system that could integrate with custom parking software to manage high daily traffic.

Solution

- ➔ The station installed Hanwha Vision 4K and 5MP cameras paired with the WAVE Video Management System (VMS), leveraging an open platform to support an automated, in-house AI parking control system.

Result

- ➔ The integration successfully automated parking management and provided high-quality video evidence for property damage investigations while ensuring strict data privacy compliance.

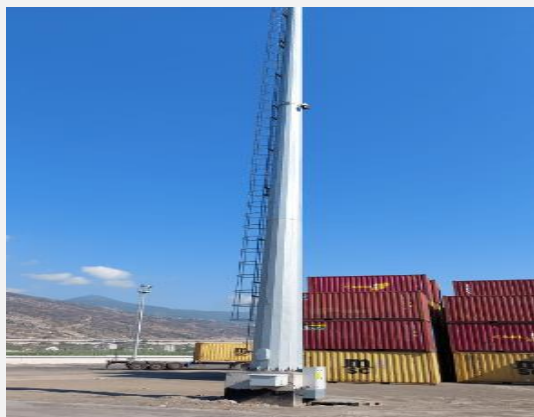
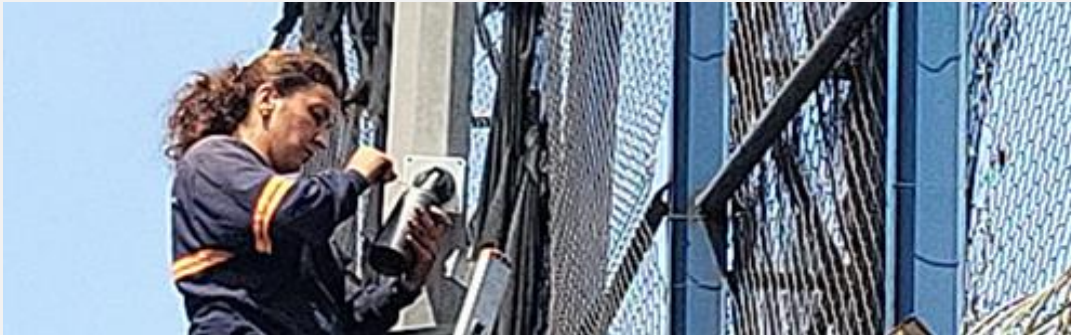
 [Read full story here](#)

Assan Port

Türkiye

“Using AI to automatically track objects and calling on deep learning to search for and classify objects helps keep this vital port secure and the shipping that relies on it flowing efficiently.”

— Adnan Sanli, Employee of Teknoteam Teknoloji Ürünleri



Challenge

- ➔ Assan Port's security identified a need to improve security efficiency and situational awareness, to effectively protect the Port's ships, equipment, shipyards, and containers.

Solution

- ➔ The entire system was replaced with Hanwha Vision devices, including over 177 Q series cameras and three X PTZ PLUS cameras.

Result

- ➔ With new Hanwha Vision's solution, security team members are able to monitor the shipyard and its assets 24/7 both on-site and remotely.



[Read full story here](#)

Rize–Artvin Airport Türkiye

“The safety of passengers and staff is vital to the airport experience. Recognizing this, the Rize–Artvin Airport security team wanted to install a comprehensive and reliable video surveillance solution that also worked seamlessly with access control, perimeter protection, and the announcements system.”

- Mubin Cakmak, CEO of system integrator Bes Teknoloji,



Challenge

- ➔ The General Directorate of State Airports Authority needed to install a flexible and scalable video surveillance system for its new airport to ensure security, protect staff and passengers, and monitor all assets and vehicles.

Solution

- ➔ The airport installed 710 Hanwha Vision cameras—including thermal, dome, bullet, and PTZ models—to secure the perimeter, runways, terminal, and car park. The system utilizes Milestone XProtect Video Management System (VMS) and is integrated with the airport's fire alarm and access control system.

Result

- ➔ A multi-level security system was established across the airport, requiring verification at every critical point (runways, elevators, counters). This system uses line crossing analytics to prevent unauthorized runway access, complemented by thermal cameras to detect movement in low light, significantly improving flight safety.



[Read full story here](#)

East Midlands Logistics Centre UK

“Operational disruption is not an option for this leading logistics company, so it was vital that we installed a system that was reliable and provided the high-quality footage needed to keep operations running. Hanwha Vision was a natural choice for us and the client, as its products have a proven track record in performance and reputability”

- Dave Salisbury, Managing Director at Zicam



Challenge


- ➔ East Midlands Logistics Centre needed to find a video surveillance system that could keep up with the fast-paced environment of its automated warehouse and be reliable.

Solution

- ➔ The company implemented a video surveillance system from Hanwha Vision, which included cameras such as QND-8080R, WAVE Video Management System (VMS), and high-capacity RAID server storage.

Result

- ➔ The new system helped the company to avoid downtime and maintain productivity.

 [Read full story here](#)

5



Hanwha Vision in

Education

Hanwha Vision's comprehensive range of video surveillance solutions help create safer learning environments for students, teachers, and visitors. Widely used in schools and universities worldwide, our AI-powered cameras are valued by security professionals for their ability to produce exceptional image quality, integrate seamlessly with other existing security systems, and deliver rapid detection of suspicious activity, helping to reduce criminal activity and speed up investigations.

Western Michigan University

US

“We were one of the first in the world to get these 4x4K cameras and with their high-quality sensors, we can install them higher than most AI cameras. We get a much larger area of surveillance coverage, while still getting better than expected AI functionality.”

– Lieutenant Matt Page, Supervisor of Building Security,
Western Michigan University Police Department



Challenge

- ➔ Western Michigan University had a significant gap in its security infrastructure, with less than 5% of the campus exterior covered by surveillance cameras.

Solution

- ➔ The University upgraded its campus-wide surveillance infrastructure with Hanwha Vision's WAVE Video Management System (VMS) and more than 500 new cameras, mainly the PNM-C32083R 4x4K models.

Result

- ➔ Hanwha Vision's solutions have provided the university with significant benefits, including an increase in campus surveillance coverage from less than 5% to over 90%, enhanced remote security, and improved operational efficiency, while eliminating recurring subscription fees.

 [Read full story here](#)

Putnam City School District US

“Response times are faster, Security procedures are more efficient and we can allocate resources more appropriately to match the unique needs of each school.”

– Mark Stout, Chief of Police for the Putnam City School District



Challenge

- ➔ To replace an aging and outdated security system, security leaders at Putnam City School District, sought new cameras equipped with critical technologies, such as Artificial Intelligence and data analytics.

Solution

- ➔ Ongoing installation of more than 1,500 Hanwha Vision cameras, a mix of P series AI dome, multi-sensor, panoramic, X series fisheye and PTZ models. More installations planned in the future as the district adds new facilities and expands its current venues.

Result

- ➔ Hanwha Vision's AI-based cameras use Deep Learning to enhance facial/object recognition and reduce false alarms caused by environmental factors. This allows campus security to operate more efficiently, focusing only on suspicious or criminal events for better forensic data gathering.



[Read full story here](#)

Glasgow Science Center UK

“We are very happy with the performance of the new system and are pleased that we could take advantage of the cost-saving benefits of the Hanwha Vision’s HD+ cameras while improving quality and functionality.”

– Roddie Galbraith, Facilities Manager at the Glasgow Science Center



Challenge

- Glasgow Science Center needed to replace an existing analogue video surveillance system which was unable to provide the features and image resolutions of the latest cameras and to create a safer environment for visitors.

Solution

- A total of 68 new Hanwha Vision cameras were installed at the center, replacing 48 existing analog cameras and adding 20 cameras to eliminate blind spots. Of these, 28 were selected from the Hanwha Vision HD+ analog series (Bullet, PTZ, and mini-dome), delivering 2MP HD images over coaxial cables.

Result

- Hanwha Vision HD+ cameras minimize the cost and disruption of installing new data cabling as they support the transmission of HD images using standard coax cabling at distances of up to 500m.



[Read full story here](#)

South Pittsburg High School US

“The picture quality of Hanwha Vision cameras far exceeds the competition.
We also like the ease of set up and the price point.”

– Tory Smith, Director of technical operations at MCW/Diversified



Challenge


- The school needed to upgrade to a high-quality, digital IP-based video security system to be able to give the weapons detection system the resolution required for maximum accuracy.

Solution

- 10 Hanwha Vision cameras were chosen for superior performance in all lighting. The installation included PNM-9000VQ multi-sensor cameras for maximum quality exterior/perimeter coverage (including the parking lot), QND-6082R dome cameras for interiors/hallways, and QNO-8080R bullet cameras for the entrance bridge.

Result

- The image quality of Hanwha Vision cameras coupled with a proactive solution to detect weapons, makes the school truly feel that they've invested in the highest level of security to keep their students and staff safe.

 [Read full story here](#)

Army and Navy Academy US

“One of the main things we were looking for was a strong package with analytics. Since Hanwha Vision cameras and their WAVE VMS both have intuitive features, they were a perfect fit for our needs.”

- Jeffrey Gibson, Assistant Commandant, Operations, Safety, and Security, Army and Navy Academy



Challenge

- The school needed to replace their existing, out-of-date analog camera system and they needed a system that could keep up with current technology such as analytics to keep close watch on the campus could act as a force multiplier.

Solution

- The Academy deployed a total of 141 Hanwha Vision cameras integrated with WAVE Video Management System (VMS). The installation included PNM multi-sensor, multi-directional models (PNM-9081VQ, PNM-9320VQP PTZ, and PNM-9020V 180°) for covering wide areas, long distances, and the coastline between buildings.

Result

- By taking advantage of the in-camera and VMS analytics available in their new system, the teams can now monitor internal and external areas. Primary cameras focus on higher priority, greater risk areas, while the analytics keeps track of the rest. As a result of the upgrade, most of the campus perimeter is now protected using line crossing analytics.

 [Read full story here](#)

6

Hanwha Vision in

Hotel / Residence

Hanwha Vision cameras are widely used by major international hotel chains, resorts and casino, luxury residences, and large apartment complexes. With their ability to produce outstanding image quality, even under poor lighting and weather conditions, our cameras can monitor and protect every part of location's layout, from parking lots, entrances/exits, casino floors, delivery areas, guest rooms, reception areas, dining halls, and much more.

DOMITYS

France

“Hanwha Vision products are very reliable, which allows us to reduce our maintenance operations.”

– Damien Véron, Infrastructure and Connectivity Architect at DOMITYS



Challenge

- ➔ DOMITYS needed a reliable, high-quality, and maintainable security system to monitor common areas and verify incidents while rigorously respecting residents' privacy.

Solution

- ➔ A decade-long partnership with Hanwha Vision resulted in the deployment of a comprehensive, scalable solution that ensures product reliability and continuity across all residences.

Result

- ➔ DOMITYS maintains a secure environment with low maintenance needs, allowing it to effectively safeguard residents' well-being and rapidly scale the reliable infrastructure to new facilities.

[Read full story here](#)

Mercure Hotel France

“The cameras are not solely dedicated to security but also allow for real-time monitoring of what is happening in the hotel..”

– Ms. Sénéchal, Mercure Hotel Manager



Challenge


- ➔ Two hotels in the chain, based in La Roche-sur-Yon, needed to modernize their security with high-quality video surveillance systems.

Solution

- ➔ Hanwha Vision cameras, selected for their reliability and outstanding performance, were chosen to support Mercure.

Result

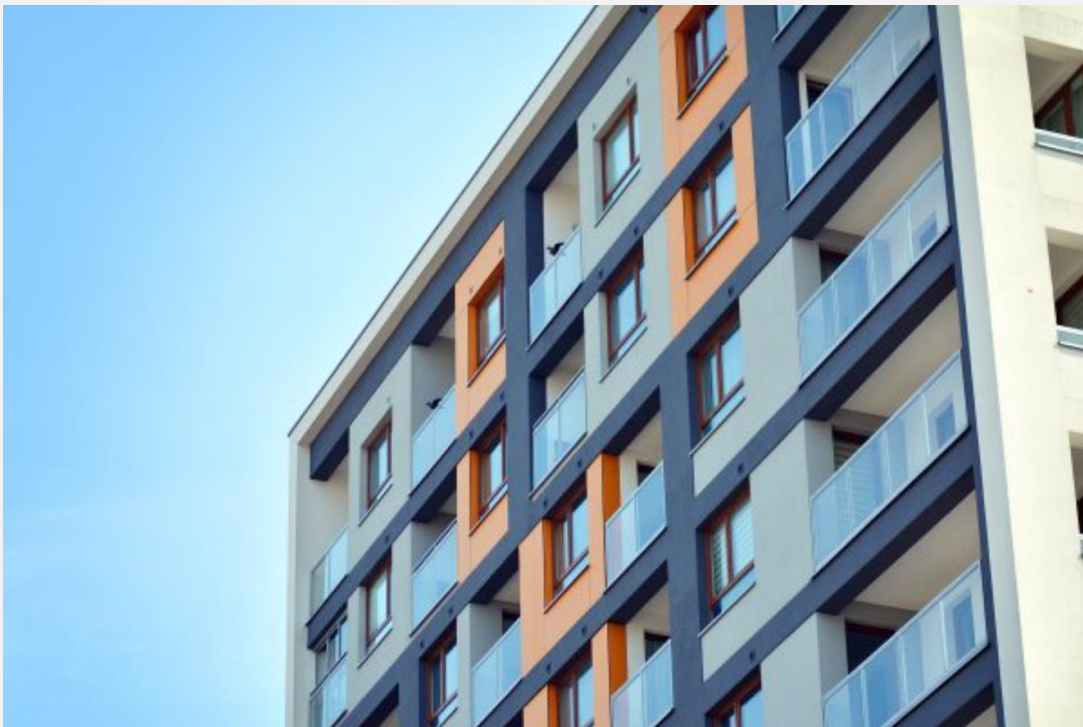
- ➔ The cameras are not solely dedicated to security but also allow for real-time monitoring of what is happening in the hotel.

 [Read full story here](#)

Midland Heart Housing Association UK

“The new system offers residents value for money as well as enhanced safety and security.”

– Vicki Brownhill, Director of Housing at Midland Heart



Challenge


- ➔ Midland Heart wanted to improve community safety for residents and replace the existing analogue video surveillance system at over 75 sites.

Solution

- ➔ Approximately 900 Hanwha Vision Q series cameras were chosen for their exceptional image clarity, reliability, and adaptability across a variety of environments.

Result

- ➔ The new video system not only enhances security but also brings efficiency and sustainability to Midland Heart's operations, allowing them to provide a better service to their residents.

 [Read full story here](#)

Domofrance France

“The Hanwha Vision system has allowed us to enhance the security of our residences. We are very satisfied with the quality of the hardware and software.”

– Head of security at Domofrance



Challenge

- ➔ Domofrance needed a solution that aligns with a comprehensive security strategy, featuring a high-performance, reliable, and scalable system to support growth.

Solution

- ➔ They built a security system with Hanwha Vision cameras and Wisenet WAVE Video Management System (VMS).

Result

- ➔ They enhanced the security of residences and ensured the safety of over 40,000 homes.



[Read full story here](#)

MVM Group Hungary

“Hanwha Vision has a very balanced product line with good features and reasonable pricing. It was a natural choice when we realized that on these sites we couldn’t use fence protection, infrared, or microwaves to detect intruders. With the thermal cameras, we could rest assured that no personal data would be gathered”

- Tamás Tánczos, Security Engineering at MVM



Challenge

- ➔ MVM had 14 photovoltaic power plants that needed to be protected in high-residential areas while protecting the privacy of neighboring residents.

Solution

- ➔ Over 100 Hanwha Vision thermal cameras were installed along with PTZ cameras with a handover function.

Result

- ➔ The thermal cameras help MVM protect its photovoltaic sites without compromising neighboring residents’ privacy.



[Read full story here](#)

We-Ko-Pa Casino Resort US

“We were looking for a manufacturer that had a variety of camera offerings to give us what we wanted and that also had a good reputation for quality. We found what we were looking for with Hanwha Vision.”

– Lee Brown, Lead Surveillance Technician for the Fort McDowell Tribal Regulatory Agency



Challenge

- We-Ko-Pa Casino Resort needed to ensure coverage of every machine which moves around every day in the slot floor in the new facility.

Solution

- Casino decided to use the higher resolution P series 4K cameras and place them strategically throughout the space. Today, the new Casino has over 800 Hanwha Vision cameras, including the XNV-8080R, PNV-9080R, and PNF-9010R models.

Result

- Hanwha Vision could provide high quality and flexibility with its cameras for the casino to avoid having to reconfigure and reinstall cameras all the time. The image quality with the Hanwha Vision cameras gave the casino the edge they needed to work within the ceiling constraints.

 [Read full story here](#)

Gaylord Opryland Resort and Convention Center US

“Our older security camera images are grainy or black and white, which means we could not get the level of detail we needed. But, with Hanwha Vision cameras, we’re able to capture high-quality images that show us, for example, how a guest fell. Whether there was an obstruction, water on the floor, or an indentation or whether the guest simply tripped.”

– Greg Pezzo, Gaylord Opryland Resort and Attractions’ Safety and Security Director



Challenge

- Ryman Hospitality found out that CCTV systems were lacking in all of its hotels. So, they decided to invest in a complete upgrade of all its hotels and chose the Gaylord Opryland as its test case.

Solution

- The Resort designed a solution that features a new Video Management System (VMS) from Milestone Systems and 400 cameras from Hanwha Vision.

Result

- Security is now easily able to track persons of interest clearly as they move throughout the Resort. This helps to protect them against liability from potential lawsuits by providing captured high-quality images in real-time.

 [Read full story here](#)

Star of Hope Mission US

“To my knowledge, there is nothing else on the market that compares with WAVE. It is incredible how easy it is to use and just amazing how much it helps us with both active monitoring and finding the recorded video.”

— Ike Kimmel, Director of Facilities Development, Star of Hope Mission



Challenge


- Star of Hope had to install a security system at the new facility called Women and Family Development Center. They had to make sure that they had coverage inside the buildings and the fence and outside on the surrounding perimeter area.

Solution

- They selected a total of 262 Hanwha Vision cameras and later adopted WAVE as its Video Management System (VMS). They use 12MP cameras on the perimeter, 4MP cameras in courtyards, and 2MP cameras inside buildings. P series 12MP 360° fisheye cameras were installed in classrooms.

Result

- In a case of theft, Star of Hope was able to find and share video footage with local law enforcement to support the investigation and prosecution of the crime with WAVE which is easy to use for monitoring and finding the recorded video.

 [Read full story here](#)

7

Hanwha Vision in

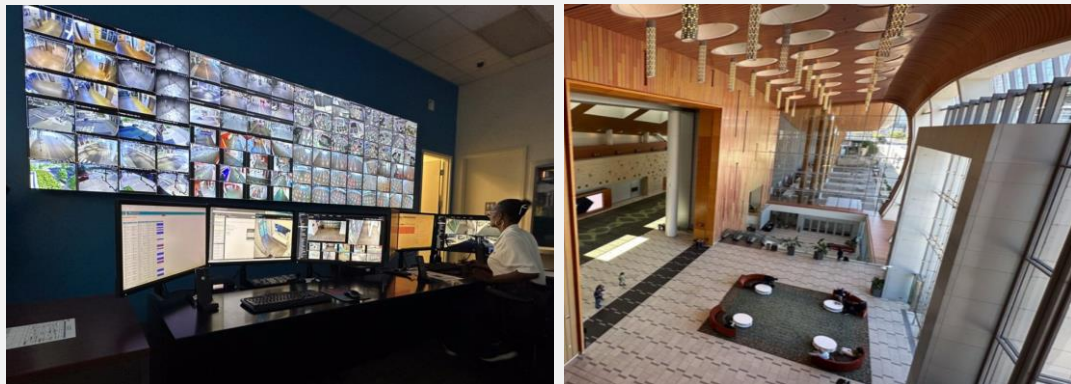
Commercial Building

Security professionals with Fortune 500 companies, popular sports teams, and entertainment arenas, choose Hanwha Vision technologies to provide safe environments for customers, employees, and fans. They value our range of cameras can simplify crowd management and monitoring, seamlessly integrate with other security systems, deliver the clearest imagery, even up to 8K resolution, and have built-in AI data analytics to help identify better staffing decisions and operational improvements.

Music City Center US

“By far, the quality of the video has proven to be a game-changer for our organization. We have 360-degree coverage, not only on our exterior but also within the facility that extends beyond what most cameras systems can provide.”

— Eric Blouin, Director of Technology at Music City Center



Challenge

- ➔ Music City Center needed to upgrade to an open, non-proprietary surveillance system providing 360-degree, multi-view coverage of its 2.1 million-square-foot facility and the surrounding areas.

Solution

- ➔ The center worked with Hanwha Vision and Convergent Technologies to deploy a scalable surveillance system incorporating multiple types of camera models, AI, and analytics.

Result

- ➔ The center now has a future-ready security system capable of ensuring the safety and security of exhibitors, visitors, and Nashville residents.



[Read full story here](#)

OK Corral Park France

Hanwha Vision's intelligent video surveillance is a key asset in offering a quality service, and enhancing both visitor satisfaction and operational efficiency.



Challenge

- ➔ OK Corral Park needed to improve safety and operational efficiency for over 400,000 annual visitors.

Solution

- ➔ The park installed over 100 Hanwha Vision cameras for real-time security monitoring and strategic visitor flow management.

Result

- ➔ The new system enhanced security, optimized crowd management, and improved visitor satisfaction, positioning the park as an innovative leader.



[Read full story here](#)

Seznam Data Centers

Czech Republic

Hanwha Vision devices come with several cybersecurity trustmarks that highlight the company's ongoing commitment to securing its cameras and data.



Challenge

- ➔ Seznam, a major Czech internet portal, needed to secure its two data centers against cyberattacks and emergencies (fire/flooding). This required upgrading their outdated CCTV infrastructure to improve monitoring and response times.

Solution

- ➔ Seznam replaced its CCTV with Hanwha Vision cameras because of their proven cybersecurity credentials, AI analytics, and the ability to integrate with current infrastructure and be rolled-out in phases.

Result

- ➔ Seznam now enjoys enhanced security with reduced vulnerability to breaches and unauthorized access. AI analytics streamline operations by expediting response to real threats while minimizing false alarms. Furthermore, the seamless integration and phased rollout ensured minimal disruption to existing infrastructure.



[Read full story here](#)

Stade des Alpes France

“Not only have we increased the number of cameras across the stadium but they’re delivering exceptional images back to operators. Very satisfied with how the cameras are working. They’re supporting our events like football and concerts, and helping local police to identify any possible antisocial or criminal behavior.”

– Jean Mouton, Director of the Stade des Alpes



Challenge

- ➔ The Stade des Alpes team needed to update its existing system and bring it up to date with the requirements of the LFP (Ligue de Football Professionnel).

Solution

- ➔ In total, 136 Hanwha Vision cameras were installed across the site.

Result

- ➔ The comprehensive video security system enables easy access to and view of all parts of the stadium. The PTZ cameras span the stadium’s field and stand with a wide field of view, while dome cameras provide more detailed visibility of internal areas and the stands.



[Read full story here](#)

Centre for Contemporary Art, Ujazdowski Castle

Poland

“Our operators can manage everything easily through WAVE, including alarms so they are not distracted by false alarms being sounded all of the time. There is also the option to search using AI attributes and different parameters and to create rules that automate processes. All of this helps to make our security more intelligent and efficient.”

– Rafał Filipowicz, Head of IT and Multimedia Department at Ujazdowski Castle



Challenge


- ➔ Located in Warsaw, Poland, The Centre for Contemporary Art, Ujazdowski Castle, needed a system that was flexible to the different needs of the many spaces in the museum, and that worked with the castle's 13th-century aesthetic.

Solution

- ➔ Hanwha Vision's P and X series AI cameras were chosen due to their built-in deep learning analytics, along with the intuitive and easy-to-use WAVE Video Management System (VMS) and WAVE Video Wall.

Result

- ➔ The WAVE Video Wall functionality allows the Ujazdowski Castle team to create multiple layouts of the most critical parts of the museum. Operators can proactively monitor what's happening in these high-value spaces. Video analytics running in the background will issue automatic alerts for any events that need further investigation.

 [Read full story here](#)

Brooklands Museum UK

“Our security personnel are now able to view 24/7 the superb quality images captured by the cameras on monitors at our central control room. We have a highly effective surveillance solution which will be put to good use as we strive at all times to maintain a safe and secure environment for employees and visitors.”

— Mark Dover, Brooklands Museum’s facilities manager



Challenge

- ❖ The Museum’s security team recognized a need to replace the site’s old analogue CCTV cameras with high-definition IP models that utilize the latest technology to keep exhibits and visitors safe.

Solution

- ❖ Among the cameras installed at the Museum are internal QND-6082R 2-megapixel dome cameras that feature built-in IR illumination and a 3.1x motorized varifocal lens. New external 5-megapixel QNO-8080R bullet cameras have also been installed.

Result

- ❖ The cameras enable the Brooklands Museum security team to have a better view of all parts of the site, and enable continuous monitoring for any events that require 24/7 surveillance.



[Read full story here](#)

MFG's Electric Vehicle (EV) Charging Hubs UK

"We are delighted with how AGE CCTV and Hanwha Vision are continuing to work in partnership to help us achieve these objectives."

- Andrew Edwards, group infrastructure director at MFG



Challenge

- MFG needed to deter and detect vandals, as well as maximize the customer experience by helping personnel to quickly identify if any charging equipment has been damaged.

Solution

- Depending on the number of charging bays at each location, AGE CCTV has installed one or more 5MP Hanwha Vision QNO-8080R bullet cameras.

Result

- With many MFG (EV) charging sites being unmanned, authorized MFG personnel are able at any time to remotely access the live images captured by the H.265 Hanwha Vision QNO-8080R cameras or retrieve the recorded video of any incidents via a desktop PC or laptop, and their smartphones or tablets.

 [Read full story here](#)

8

Hanwha Vision in

Healthcare

Healthcare facilities and hospitals around the world choose Hanwha Vision video surveillance solutions to create safer environments for patients, employees, and visitors; simplify Virtual Care; and deliver AI-powered insights that improve patient experience, maximize staff efficiency and improve operational efficiency.

Adnan Menderes University Hospital

Türkiye

“At Proves Bilgi Teknolojileri, we prioritize delivering reliable, high-performance security solutions that offer excellent value for money. Having worked with Hanwha Vision before, we knew its cameras would provide the quality and durability required for a multi-faceted environment like the Adnan Menderes University Hospital.”

– Serdar Karas, Chairman of Proves Bilgi Teknolojileri San ve Tic. A.Ş



Challenge

- ➔ The Adnan Menderes University Hospital, a large facility with different security needs for its 725 beds and 15 operating rooms, required a modern surveillance system to manage access and protect equipment.

Solution

- ➔ The hospital installed 300 Hanwha Vision QNO-6012R cameras, chosen for their reliability and features like motion detection, clear day/night imaging, and tamper alerts.

Result

- ➔ The new system provides proactive monitoring, which has led to improved situational awareness and quicker response times, ultimately enhancing the safety of the hospital's staff and patients.

 [Read full story here](#)

Acıbadem Healthcare Group Türkiye

With the different models working together, the Acıbadem team benefits from proactive security measures thanks to AI continuously monitoring for events that require operator attention.



Challenge

- ➔ Acıbadem Ataşehir Hospital required a security system to monitor patient wait times, enhance security for all personnel, and control access to restricted areas.

Solution

- ➔ 900 Hanwha Vision cameras were installed including XNO-6080R, XNF-8010R and AI-powered PND-A9081RV.

Result

- ➔ They benefit from proactive security measures thanks to AI and improved the patient experience and care outcomes.



[Read full story here](#)

Yongin Severance Hospital Korea

“With the improved user convenience and operational efficiency, we’re highly satisfied with the ability to seamlessly operate our systems despite its large-scale.

Hanwha Vision’s solution is also proving to be useful in identifying the movements of patients who tested positive after being tested at the centers.”

– Yongin Severance Hospital Facility Team Official



Challenge

- ➡ The hospital needed a video security solution that would enhance operational efficiency for managers, provide ease-of-use to users, and most of all, protect personal information and assets with careful consideration of patient and customer needs.

Solution

- ➡ The hospital installed approximately 720 Hanwha Vision products including video security cameras, recorders, monitors, and decoders in various locations both inside and outside of the hospital. They also adopted the Video Management System (VMS), SSM.

Result

- ➡ The hospital is now able to provide more reliable medical services by establishing a customer-centered video security system.



[Read full story here](#)

9

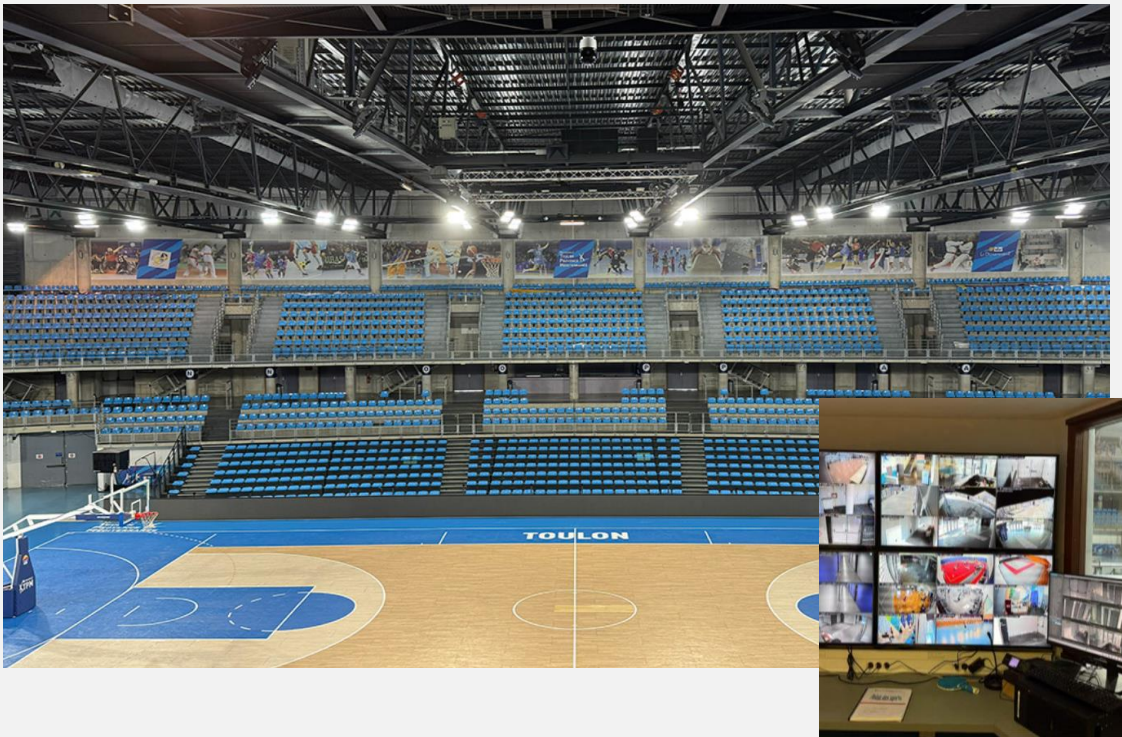
Hanwha Vision in

ETC

Palais des Sports de Toulon France

“The client is indeed aware that they have a very high-performance solution with AI. It only requires setting up use cases, such as line crossing, unauthorized object abandonment, or people counting, for example. These are potentially tools that we will implement in the future.”

– Aïman Fawaz, SNEF Connect Agency Manager in La Seyne-sur-Mer



Challenge


- The Palais des Sports de Toulon needed to replace its outdated 25-year-old security system to enhance safety, manage crowds, and meet international competition security standards.

Solution

- The venue deployed over 60 Hanwha Vision X series AI cameras which were integrated with the Genetec platform for a complete, centralized, and high-performance surveillance system.

Result

- The modernization delivered enhanced security, simplified operations, and provided a future-proof, scalable infrastructure that meets the eligibility requirements for hosting major sporting events.

 [Read full story here](#)

Drummond Colombia

Colombia

“My experience with Hanwha Vision is 12 years old. We have covered most of the mines, shovels, trains, and even equipment with operational failures to rescue it. We have been go beyond video surveillance to improve our operations with technology such as the SolidEDGE and Wisenet Wave.”

— Alexander Castro, Electronic Security Director at Drummond Colombia



Challenge

- Drummond needed innovative solutions to manage difficult operational areas, specifically addressing heavy machinery blind spots, securing long coal transport routes, and finding technology robust enough for extreme mine environments.

Solution

- The company implemented Hanwha Vision's X series and SolidEDGE cameras, leveraging edge-computing to manage remote sites.

Result

- This new system transformed security from basic monitoring into a source of actionable data, now driving strategic decisions to enhance operator safety, operational planning, and risk mitigation.



[Read full story here](#)

Beat the Bomb US

The company's tech-savvy employees immediately embraced the Hanwha Vision WAVE platform's intuitive interface, streamlining workflows and improving morale. Customers enjoy a safer, more secure environment knowing their experience is protected by advanced surveillance capabilities.



Challenge

- ➔ Beat the Bomb's rapid expansion was hindered by inefficient, disconnected surveillance and alarm systems from a previous vendor, which lacked both integration and scalability across their growing number of sites.

Solution

- ➔ The company addressed this by deploying Hanwha Vision's Wisenet WAVE Video Management System (VMS) as the central security platform, integrating it with their DMP alarm systems, and partnering with Pavion for system design, installation, and support.

Result

- ➔ This implementation led to centralized visibility and control across all sites, providing real-time monitoring from any device, establishing a scalable infrastructure to support over 40 sites, and improving staff adoption through an intuitive, user-friendly design.



[Read full story here](#)

Denizli Pamukkale Municipality Türkiye

“Hanwha Vision was a natural choice as its cameras combine proven reliability and robustness for outdoor settings with cost-effectiveness.

The cameras and NVRs have already enhanced security across the Denizli Pamukkale Municipality headquarters.”

– Serdar Karas, Chairman of Proves Bilgi Teknolojileri San ve Tic. A.Ş



Challenge

- ➔ The local government in Pamukkale needed a new surveillance system for its headquarters to continuously monitor the building and surrounding areas.

Solution

- ➔ They installed 150 Hanwha Vision cameras and three NVRs. The cameras were chosen for their reliability and features like clear day/night imaging, motion detection, and a robust, weather-resistant design.

Result

- ➔ The new system has enhanced security at the municipality headquarters by providing 24/7 monitoring and a comprehensive view of the site.



[Read full story here](#)

CREPS France

“Due to the quality and fluidity of the images, the solution provided by Hanwha Vision fully satisfies CREPS in optimizing training in the fencing hall.”

– Cyril Faucher, Coordinator of the Performance Support Mission at CREPS



Challenge

- ➔ Elite coaches needed a high-performance video solution capable of capturing high-speed fencing bouts across 14-meter-long pistes without image distortion or physical obstruction.

Solution

- ➔ The institution installed Hanwha Vision 180° panoramic multi-sensor cameras to provide seamless, high-resolution coverage of the entire training area from a single point.

Result

- ➔ The system enables athletes and coaches to conduct precise performance analysis and tactical reviews, optimizing the training environment for Olympic-level competitors.



[Read full story here](#)

BFP Service Italy

“The operational continuity of the power plants of which we are O&M operators represents an intrinsic value in the ability to produce energy without theft or interruptions.”

– Annarita Mitola, BFP Service CEO



Challenge

- ➔ Large solar farms in irregular terrain faced frequent theft attempts and required 24/7 perimeter protection that could reduce the need for manual guards.

Solution

- ➔ The site implemented a hybrid system of Hanwha Vision thermal cameras for all-weather monitoring and 5MP AI cameras to distinguish between human intruders and irrelevant motion.

Result

- ➔ Within days of installation, the system detected and thwarted two intrusion attempts in real-time, preventing theft and ensuring uninterrupted renewable energy production.



[Read full story here](#)

MBL (Live streaming of volcanic activity) Iceland

“We are pleased to share with viewers worldwide the images of volcanic activity near Reykjavik through Hanwha Vision’s high-quality cameras. It will entertain the general public and provide a valuable resource for geology students and volcanologists.”

— Hafliði Jónsson from Hafnes ehf, Hanwha Vision Europe’s authorized distributor



Challenge

- ➔ Icelandic media company MBL was looking for a camera to stream live volcanic eruption via its website. A high-quality, durable camera was required to remotely monitor volcanic activity under challenging weather and operating conditions, even amidst the risk of an unexpected earthquake event.

Solution

- ➔ Three Hanwha Vision cameras — XNO-8082R, XNP-6120H, and PNM-9030V — were deployed to monitor activity at a volcano erupting near Reykjavik, Iceland. Located in a remote area with no building around, the cameras were installed within a weather-proof housing and are powered by solar panels and wind turbines.

Result

- ➔ Hanwha Vision cameras have proven their ability to deliver exceptional performance despite the harsh, exposed conditions, successfully capturing clear images of the volcanic activity.



[Read full story here](#)

