

# AĞ KAMERASI

## Hızlı Kullanma Kılavuzu

XNP-C9253R/XNP-C9253  
XNP-C8253R/XNP-C8253  
XNP-C6403R/XNP-C6403



## Important

Please check 'Manuals' from our website, before connecting to the Supply,  
<https://www.hanwhavision.com/en/download-data/>

## Warranty

Please check "Product warranty information" from our website.  
<https://www.hanwhavision.com/en/support/warranty/>

We recommend to use the officially compatible VMS version or latest Hanwha NVR version when integrating with VMS or Hanwha NVR.

The Risk Group 1 of LEDs include in the equipment, so should be attached RG1 warning label at the end-product.

※ **Kaydırma/Eğme/Yakınlaştırma motorları ve kayar halka sürekli çalışmaya karşı bir yıl garantilidir.**



Hanwha Vision cares for the environment at all product manufacturing stages, and is taking measures to provide customers with more environmentally friendly products. The Eco mark represents Hanwha Vision's devotion to creating environmentally friendly products, and indicates that the product satisfies the EU RoHS Directive.



### Correct Disposal of This Product (Waste Electrical & Electronic Equipment)

(Applicable in the European Union and other European countries with separate collection systems)

This marking on the product, accessories or literature indicates that the product and its electronic accessories (e.g. charger, headset, USB cable) should not be disposed of with other household waste at the end of their working life. To prevent possible harm to the environment or human health from uncontrolled waste disposal, please separate these items from other types of waste and recycle them responsibly to promote the sustainable reuse of material resources.

Household users should contact either the retailer where they purchased this product, or their local government office, for details of where and how they can take these items for environmentally safe recycling.

Business users should contact their supplier and check the terms and conditions of the purchase contract. This product and its electronic accessories should not be mixed with other commercial wastes for disposal.



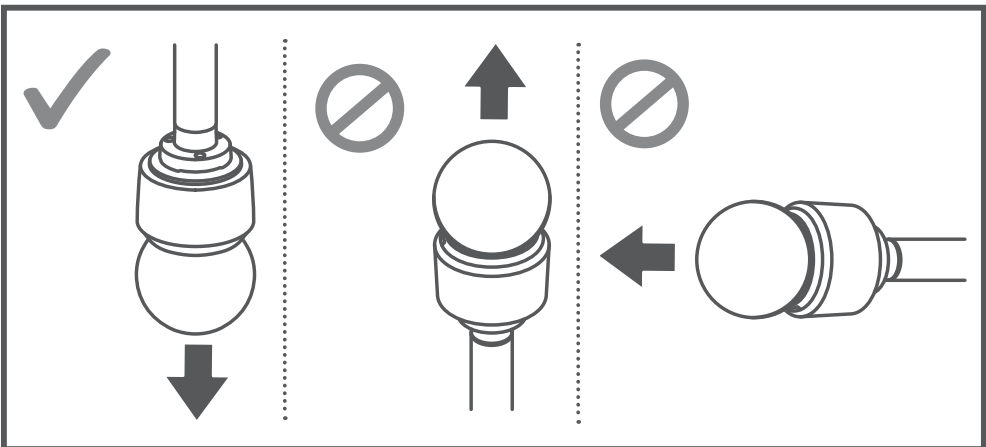
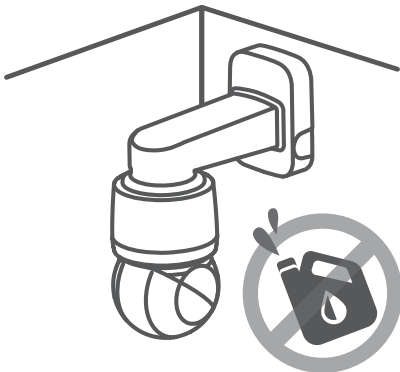
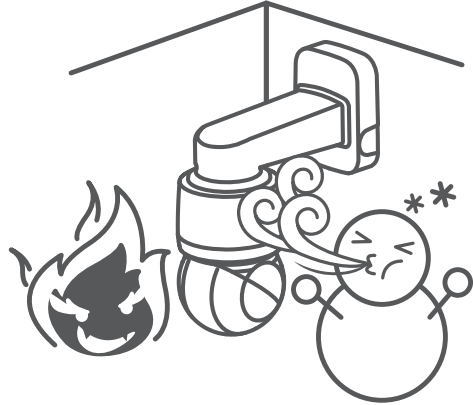
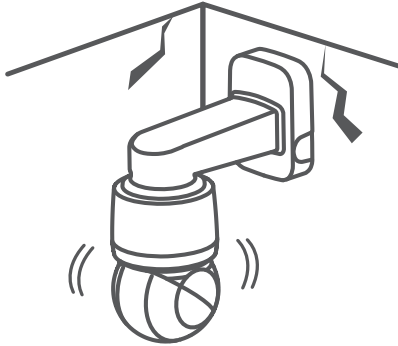
### Correct disposal of batteries in this product

(Applicable in the European Union and other European countries with separate battery return systems.)

This marking on the battery, manual or packaging indicates that the batteries in this product should not be disposed of with other household waste at the end of their working life. Where marked, the chemical symbols Hg, Cd or Pb indicate that the battery contains mercury, cadmium or lead above the reference levels in EC Directive 2006/66. If batteries are not properly disposed of, these substances can cause harm to human health or the environment.

To protect natural resources and to promote material reuse, please separate batteries from other types of waste and recycle them through your local, free battery return system.

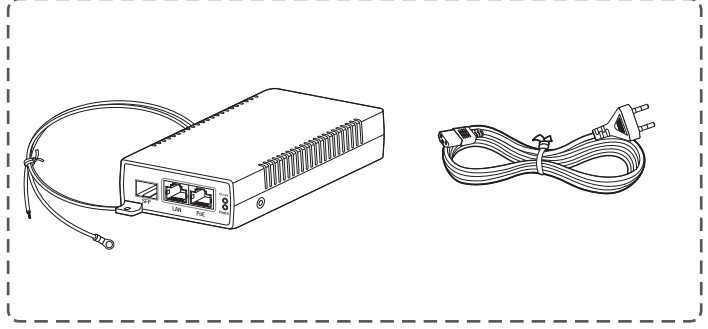
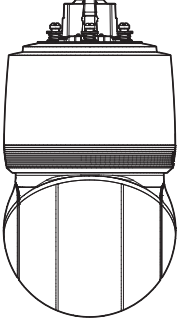
SAFETY INFORMATION



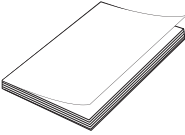
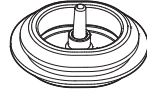
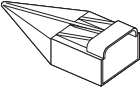
## COMPONENT

Satış yapılan her ülkede aksesuar aynı değildir.

- XNP-C9253R/XNP-C8253R/XNP-C6403R



※ XNP-C\*\*\*\*R/KEX içinde dahil değildir

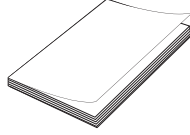
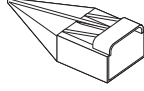
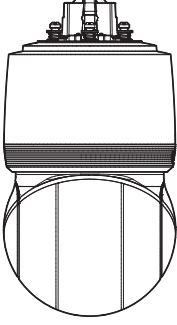


## COMPONENT

---

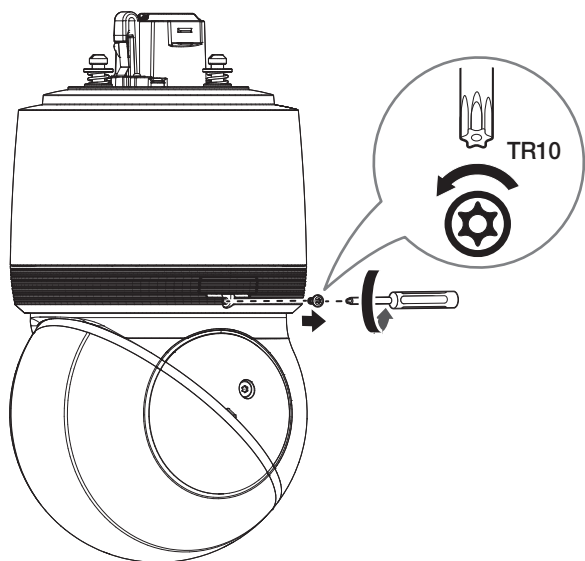
Satış yapılan her ülkede aksesuar aynı değildir.

- XNP-C9253/XNP-C8253/XNP-C6403

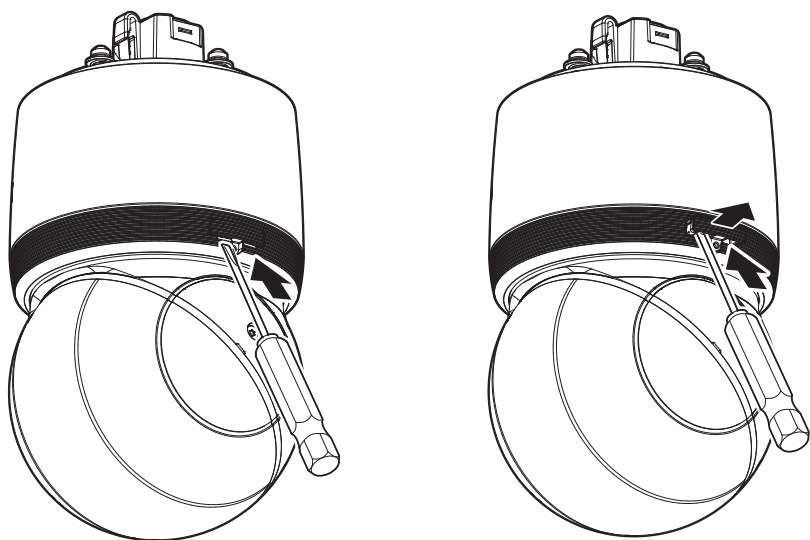


# INSTALLATION

1



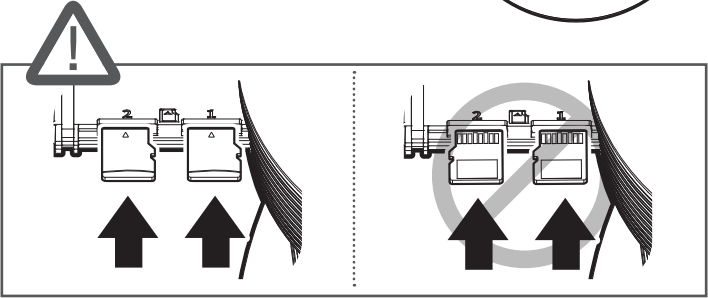
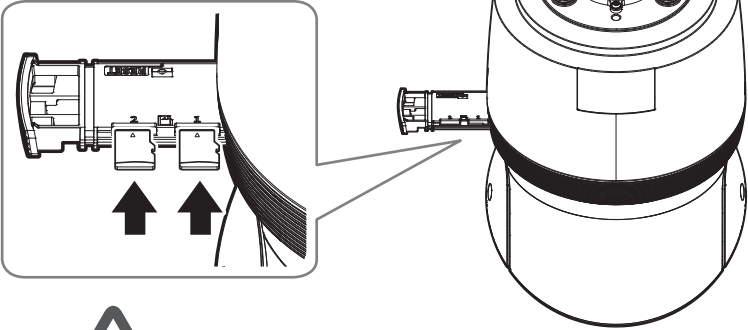
2



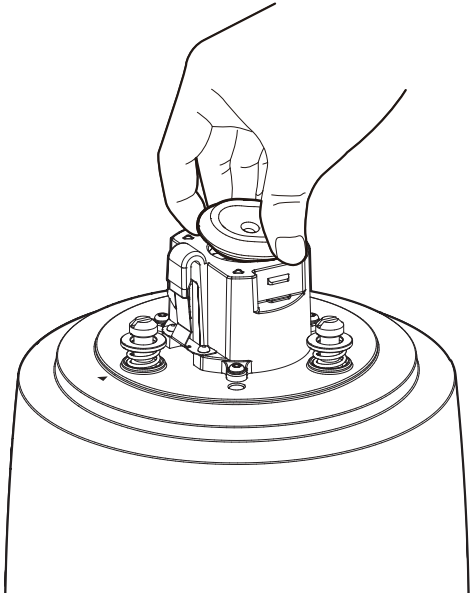
# INSTALLATION

3

• Dahil değildir: Micro SD kartı

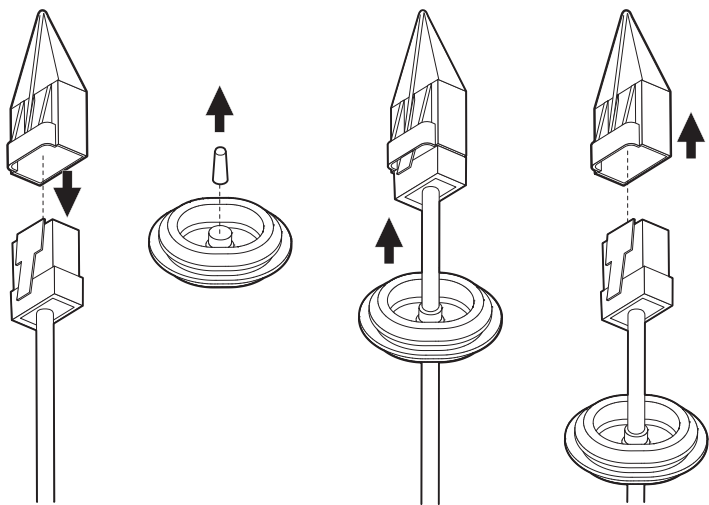


4

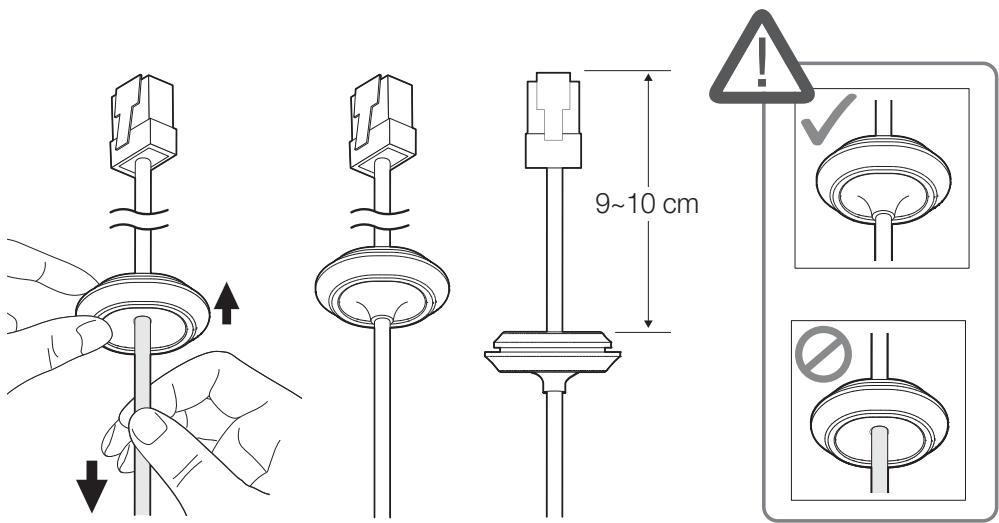


# INSTALLATION

5



6

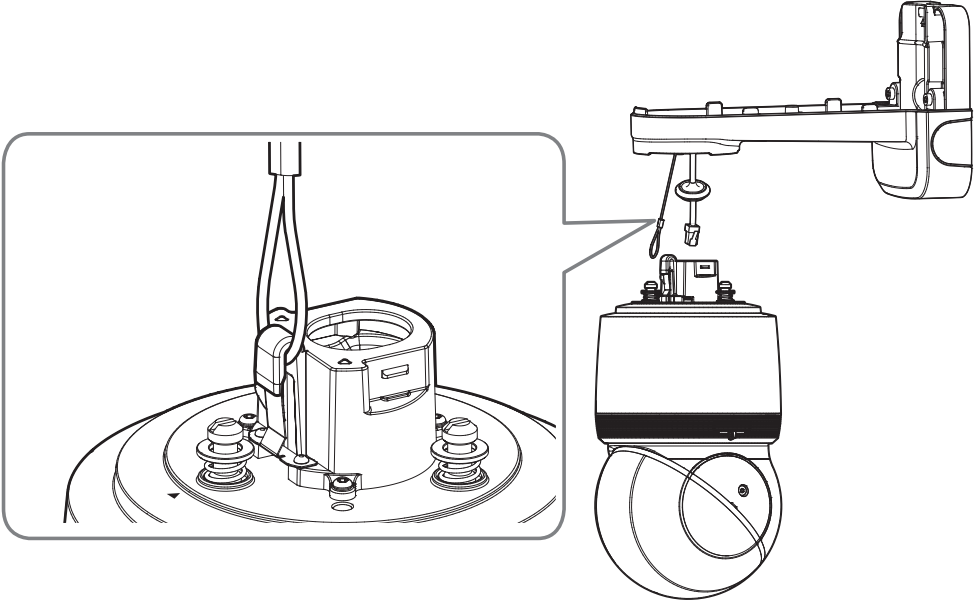




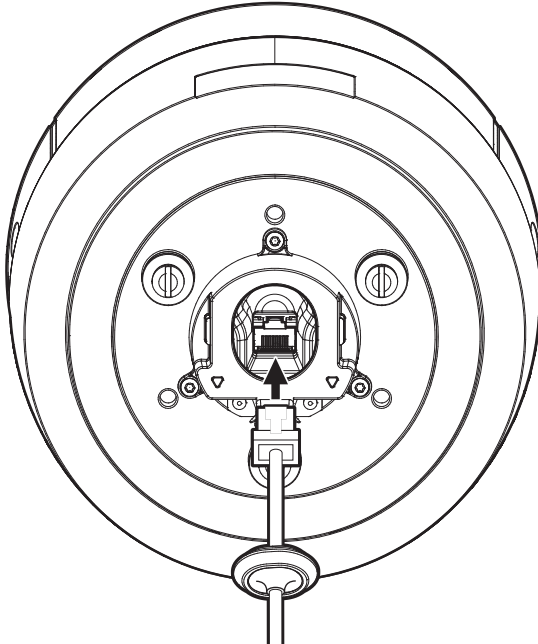
## INSTALLATION

7

• Dahil değildir: Duvara ve Direğe Montaj Parçası

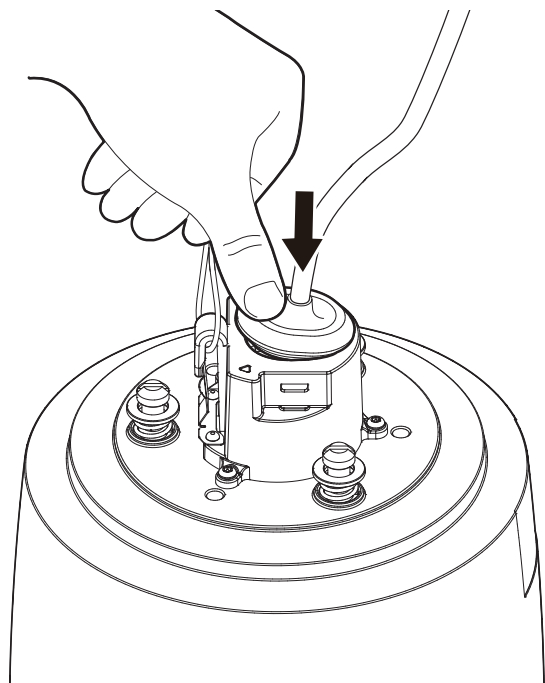


8

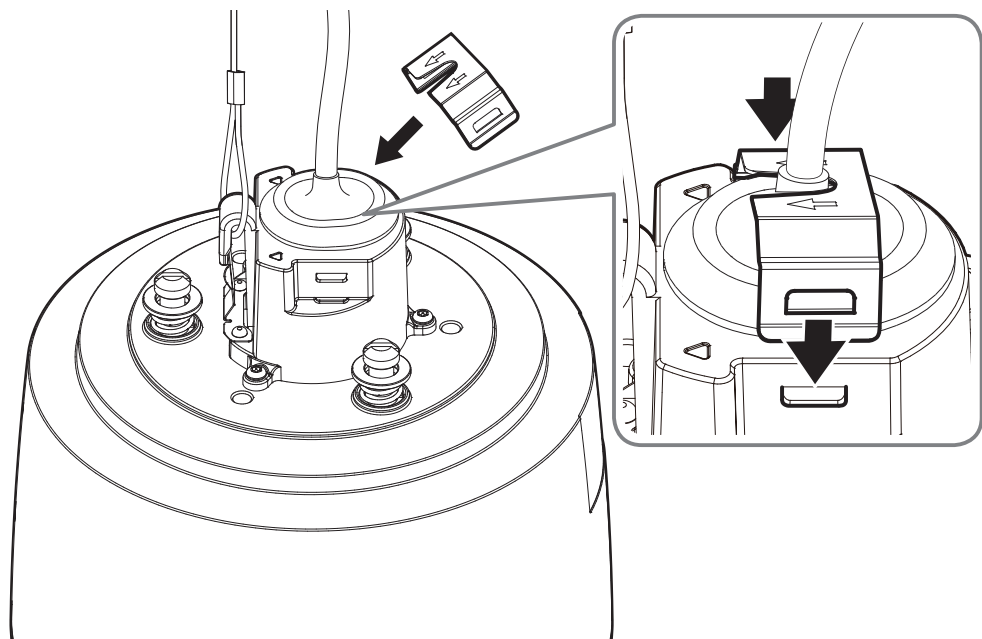


# INSTALLATION

9

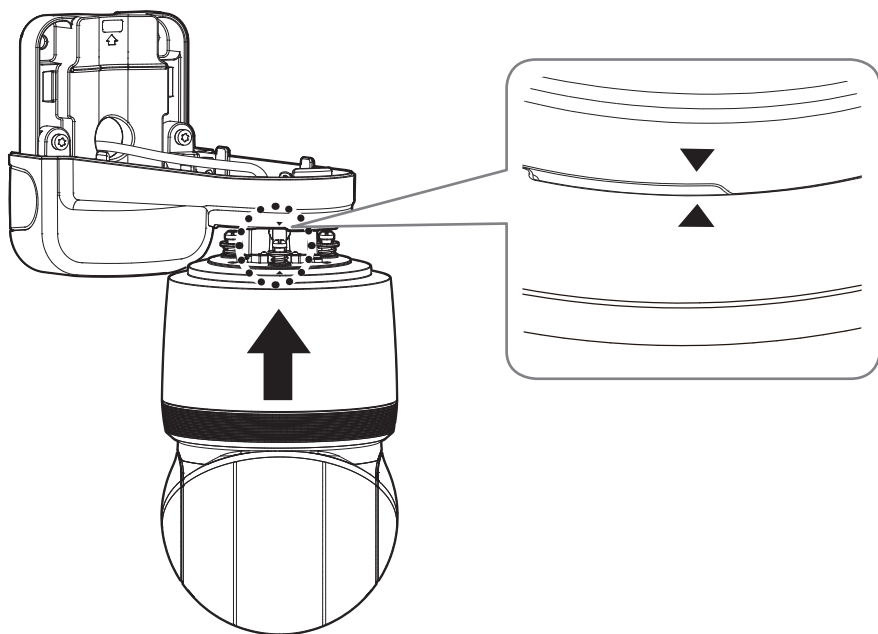


10

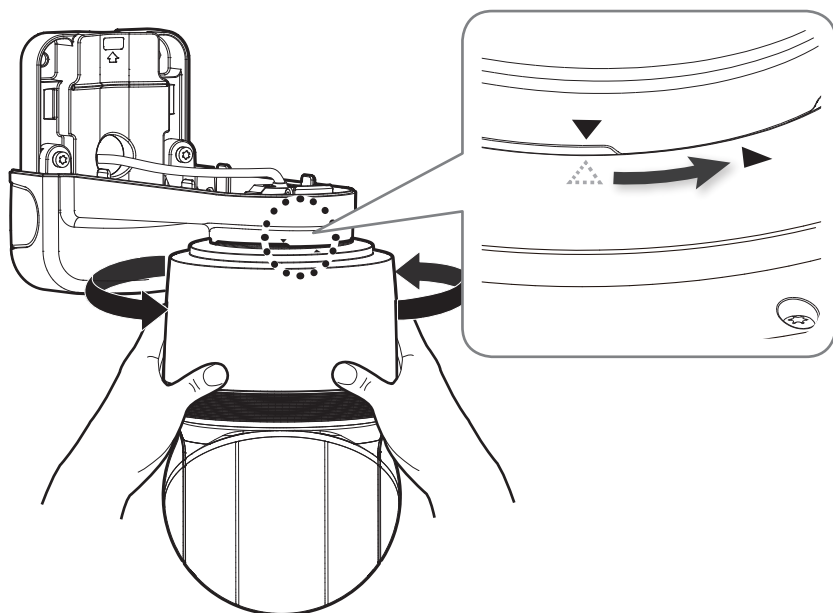


# INSTALLATION

11

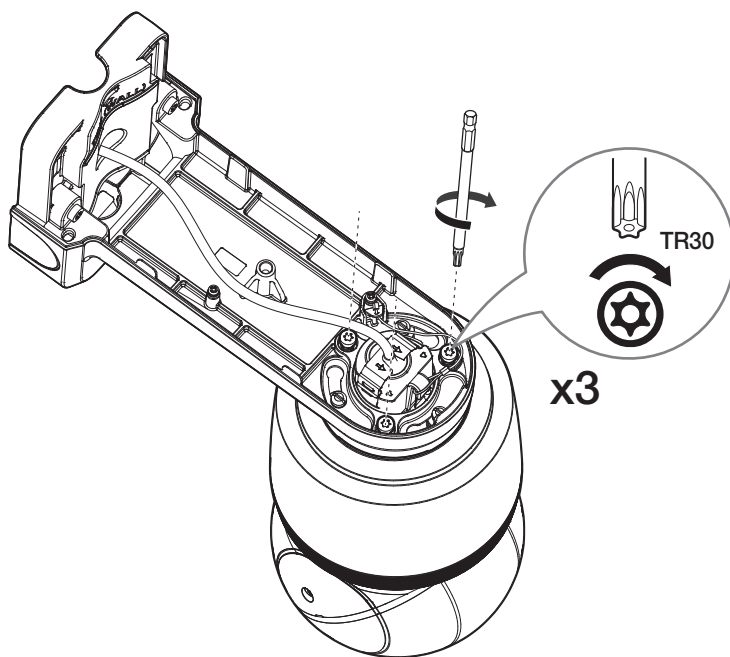


12

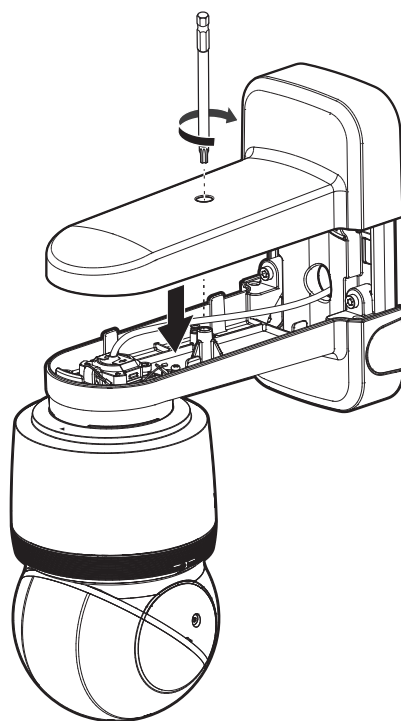


INSTALLATION

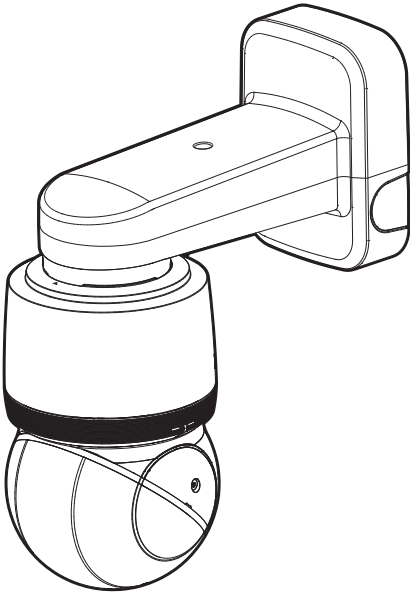
13



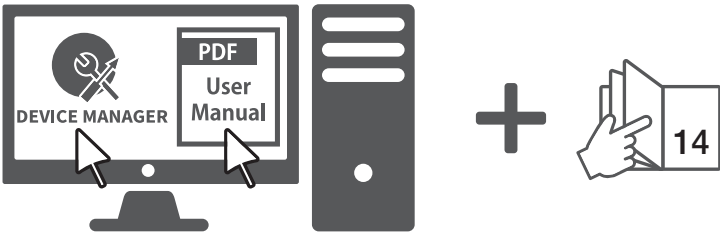
14



15



16



## ŞİFRE AYARI

Ürüne ilk kez erişim sağladığınızda, oturum açma şifresini yaratmanız gerekir.



- 8-9 karakterli yeni bir parola için aşağıdakilerden en az 3 tanesini kullanmanız gerekir: büyük/küçük harfler, sayılar ve özel karakterler. 10 karakter veya daha uzun bir parola için, belirtilenlerden en az 2 tip kullanmalısınız. (64 karaktere kadar destekler)

- İzin verilen özel karakterler. :

~`!@#\$%^&\*()\_+=[]\|;:'<>.,?/

- Şifre için boşluğa izin verilmez.
- Daha üst seviyede güvenlik için şifrelerinizde aynı karakterlerin veya ardışık klavye girişlerinin tekrarlanmaması önerilir.
- Şifrenizi kaybettiyseniz, ürünü sıfırlamak için **[RESET]** düğmesine basabilirsiniz. Bir deftere not ederek ya da ezberleyerek şifrenizi kaybetmeyin.

Administrator password change

New password

Confirm new password

• If the password is 8 to 9 characters long, it must include at least 3 of the following character types: English uppercase letters, English lowercase letters, numbers, and special characters. ( support up to 64 characters )

• If the password is 10 characters or longer, it must include at least 2 of the following character types: English uppercase letters, English lowercase letters, numbers, and special characters.

• ID may not be used as password. The password and ID cannot be identical.

• The following special characters can be used ~`!@#\$%^&\*()\_+=[]\|;:'<>.,?/

• You may not use more than 4 consecutive characters. (example: 1234, abcd, etc.)

• You may not use the same character 4 or more times consecutively. (example: IIII, 1111, aaaa, etc.)

Apply

## OTURUM AÇMA

Kameraya her erişiminiz sırasında oturum açma penceresi görünür.

Kameraya erişmek için Kullanıcı Kimliği'ni ve şifrenizi girin.

- 1 <User Name> giriş kutusuna **"admin"** yazın.
- 2 Şifreyi <Password> giriş alanına girin.
- 3 [Sign in] ögesine tıklayın.

Sign in

http://192.168.1.100

Your connection to this site is not private

1 Username

2 Password

3 Sign in Cancel



microSD, microSDHC, and microSDXC Logos are trademarks of SD-3C LLC.

microSD, microSDHC, microSDXC are trademarks or registered trademarks of SD-3C, LLC in the United States, other countries or both.



Подлежит использованию по назначению  
в нормальных условиях  
Срок службы : 7 лет.

### Türkiye Distribütörü

**EDS Elektronik Destek Sanayi ve Ticaret Ltd. Şti.**

Meclis Mah. Teraziler Cad. Hayran Sk. (Eskisi Kılıç Sk.) No: 4 Sancaktepe / İstanbul / Türkiye  
Tel +90.216.313.25.15

**ENTES ELEKTRONİK CİHAZLAR İMALAT VE TİC. A.Ş.**

Dudullu Org.San.Bölg. 1. Cad. No:23 34776 Ümraniye / İstanbul / Türkiye  
Tel +90.216.313.01.10

**TEKNOMAKS TEKNOLOJİ / TEKNOMAKS BİLİSİM**

MERDİVENKÖY MAH.DİKYOL SOK. BUSINESS İSTANBUL No:2, Kat:7, D:B67, 34732 Kadıköy / İstanbul / Türkiye  
Tel +90.212.217.54.22

Cihazın Ticaret Bakanlığınca önerilen ortalama ömrü  
Cihazın EEE yönetmeliklerine uygun olduğuna benzer beyan

