



# HITE KOREA VISITOR GUIDE

---

Hanwha Innovation and Technology Experience | Korea



# WELCOME!

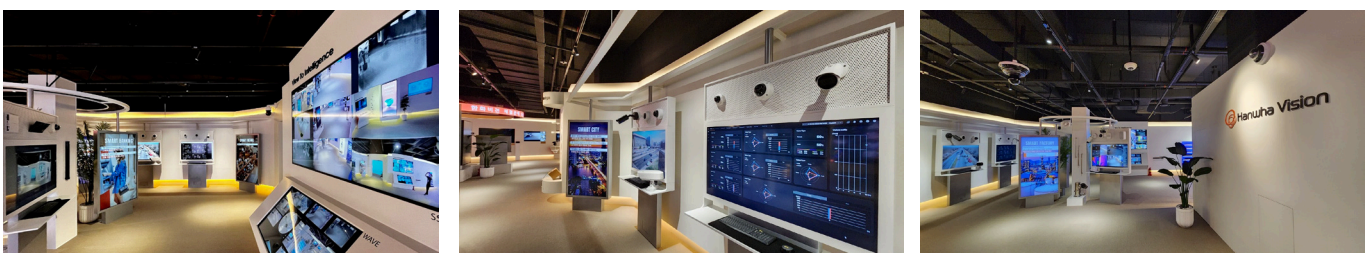
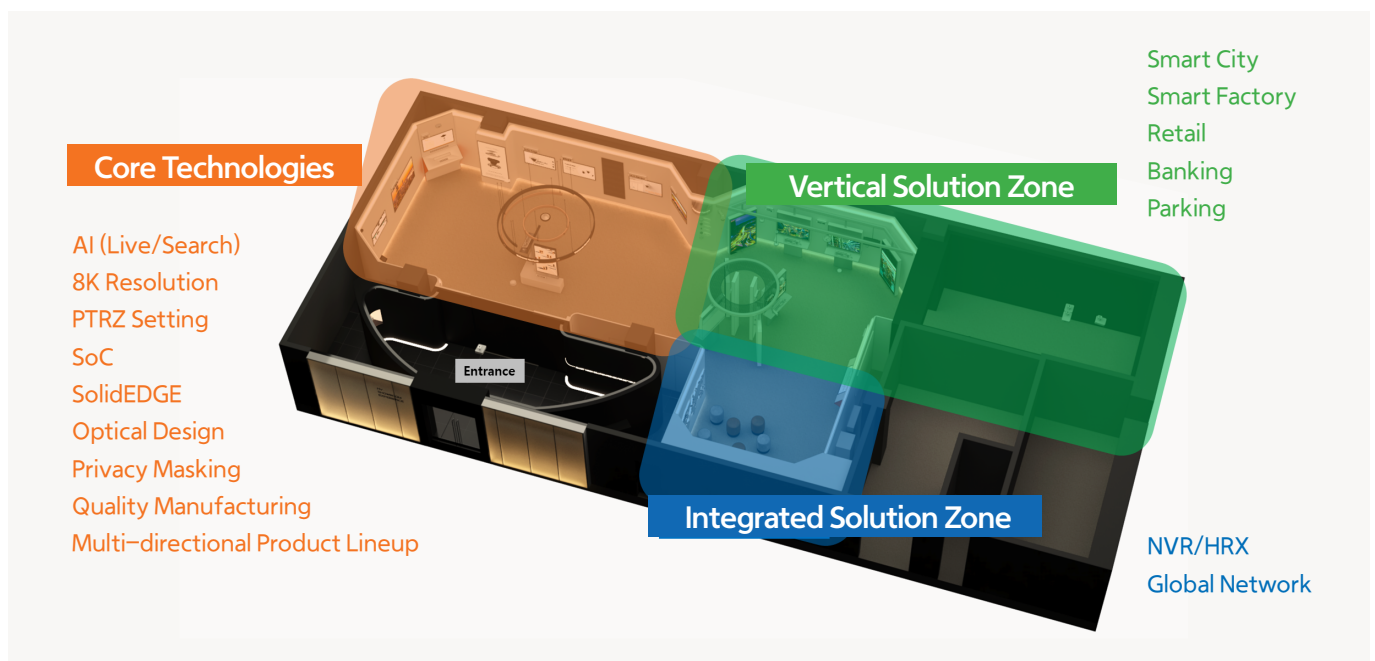
To make your visit more enjoyable, we've provided some helpful information on airports, hotels, local transportation, and dining options located near the HITE.

We're looking forward to seeing you soon and confident your visit will be informative and educational, giving you an exclusive look at the latest security and surveillance solutions shaping our industry.



## HITE KOREA

At HITE Korea, explore our core technologies, including AI, multi-directional cameras, and high-resolution imaging. See how these innovations are applied in real-world vertical solutions like smart cities, retail, and banking.



# TRAVELING TO HITE KOREA

## Hanwha Vision

6, Pangyo-ro 319beon-gil, Bundang-gu, Seongnam-si, Gyeonggi-do, 13488, KOREA  
경기도 성남시 판교로 319번길 6 (삼평동) T. (82) 70-7147-8880

\* Check-in with lobby security upon arrival.



### Parking

Please note that our on-site parking is limited.  
To ensure a convenient visit, kindly contact your local sales representative in advance to reserve a parking space.



### Airport

**Incheon International Airport (ICN)**

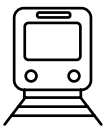
Distance to Hanwha Vision's HITE: 59.2km (36.78 miles)



### By bus

**From Incheon International Airport**

Take bus number 5000 and get off at Pangyo (SK Planet, Digital Center) station.  
Take a 12 minute walk to Hanwha Vision.



### By metro

**Pangyo Station (Shinbundang Line)**

From Pangyo Station, take a 15 minute walk to Hanwha Vision.



# HOTEL ACCOMMODATIONS

Where to Stay

## Courtyard Seoul Pangyo

776m (0.48 mi) / 15 min walk from HITE

12 Pangyoyeok-ro 192beon-gil, Bundang-gu,  
Seongnam-si, Gyeonggi-do

T. +82-31-8060-2222

## Gravity Seoul Pangyo

1.25km (0.78 mi) / 20 min walk from HITE

2 Pangyoyeok-ro 146beon-gil, Bundang-gu,  
Seongnam-si, Gyeonggi-do

T. +82 31-539-4800

## Nine Tree Premier Hotel Seoul Pangyo

1.37km (0.85 mi) / 6 min by car from HITE

Changeop-ro 18, Sujeong-gu,  
Seongnam-si, Gyeonggi-do

T. +82 31-5178-5099

## DoubleTree by Hilton Seoul Pangyo

2.69km (1.67 mi) / 12 min by car from HITE

26 Baekhyeon-ro, Bundang-gu,  
Seongnam-si, Gyeonggi-do

T. +82 31-678-5500

# DINING OPTIONS

Where to Eat

## KOREAN



### Gyeongbokgung

Traditional Korean

**Hours** 11:00am-11:00pm

**Price** \$20 - \$75



### DON BLANC

Korean BBQ

**Hours** 11:30am-10:00pm

**Price** \$20 - \$30



### Wholesome Chicken

Chicken

**Hours** 11:00am-11:00pm

**Price** \$20 - \$30



### Dodam

Casual Korean

**Hours** 11:00am-09:30pm

**Price** \$9 - \$25

## WORLD



### BASBURGER

Burger, American

**Hours** 11:00am-11:00pm

**Price** \$10-\$20



### Super Thai

Thai, Asian

**Hours** 11:30am-10:00pm

**Price** \$10-\$20

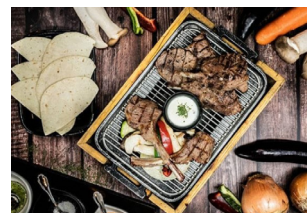


### Nekoburu

Japanese

**Hours** 11:30am-10:00pm

**Price** \$10-\$30



### Shahslyk

Halal

**Hours** 11:00am-10:00pm

**Price** \$20-\$30