



**KES Co., Ltd.**

3701, 40, Simin-daero 365beon-gil,  
Dongan-gu, Anyang-si, Gyeonggi-do, 14057, Korea  
Tel: +82-31-425-6200 / Fax: +82-31-424-0450  
www.kes.co.kr

Report No.:

KES-EM-22T0918-R1

Page (1) of (62)

# EMC TEST REPORT

Test Report No. : KES-EM-22T0918-R1  
Date of Issue : Feb. 24, 2023  
Product name : Network Camera  
Model/Type No. : XNP-6371RH  
Variant Model : -  
Applicant : Hanwha Vision Co., Ltd  
Applicant Address : 6, Pangyo-ro 319Beon-gil, Bundang-gu, Seongnam-si,  
Gyeonggi-do, Republic of Korea  
Manufacturer : 1. HANWHA VISION VIETNAM COMPANY LIMITED  
2. D-TECH CO.,LTD.  
Manufacturer Address : 1. Lot O-2, Que Vo Industrial Zone extended area,  
Nam Son commune, Bac Ninh city, Bac Ninh province, Vietnam  
2. 173-25, Saneop-ro, Gwonseon-gu, Suwon-si, Gyeonggi- do,  
Korea (Suwon Industrial Complex)  
Date of Receipt : Oct. 27, 2022  
Test date : Nov. 06, 2022 ~ Nov. 08, 2022  
Test Results : ☒ **In Compliance** ☐ **Not in Compliance**

Tested by

Jun Soo, Jung  
EMC Test Engineer

Reviewed by

Dong-Hun, Jang  
EMC Technical Manager

This test report is not related to KS Q ISO/IEC 17025 and KOLAS.

This report shall not be reproduced except in full, without the written approval of KES Co., Ltd.  
The results shown in this test report refer only to the sample(s) tested unless otherwise stated.  
The authenticity of the test report, contact kes@kes.co.kr

**KES Co., Ltd.**

3701, 40, Simin-daero 365beon-gil,  
Dongan-gu, Anyang-si, Gyeonggi-do, 14057, Korea  
Tel: +82-31-425-6200 / Fax: +82-31-424-0450  
www.kes.co.kr

Report No.:  
KES-EM-22T0918-R1  
Page (2) of (62)

**REPORT REVISION HISTORY**

Date	Test Report No.	Revision History
Nov. 16, 2022	KES-EM-22T0918	Issued
Feb. 24, 2023	KES-EM-22T0918-R1	Change the Applicant and Manufacturer at the request of the customer

***This report shall not be reproduced except in full, without the written approval of KES Co., Ltd. This document may be altered or revised by KES Co., Ltd. personnel only, and shall be noted in the revision section of the document. Any alteration of this document not carried out by KES Co., Ltd. will constitute fraud and shall nullify the document.***

This report shall not be reproduced except in full, without the written approval of KES Co., Ltd.  
The results shown in this test report refer only to the sample(s) tested unless otherwise stated.  
The authenticity of the test report, contact kes@kes.co.kr



## TABLE OF CONTENTS

1.0	General Product Description .....	4
1.1	Test Voltage & Frequency .....	6
1.2	Variant Model Differences.....	6
1.3	Device Modifications .....	6
1.4	Equipment Under Test.....	6
1.5	Support Equipments .....	6
1.6	External I/O Cabling .....	7
1.7	EUT Operating Mode(s) .....	7
1.8	Configuration.....	8
1.9	Remarks when standards applied .....	9
1.10	Calibration Details of Equipment Used for Measurement.....	9
1.11	Test Facility .....	9
1.12	Laboratory Accreditations and Listings .....	9
2.0	Test Regulations.....	10
2.1	Conducted Emissions at Mains Power Ports .....	11
2.2	Conducted Emissions at Telecommunication Ports .....	12
2.3	Radiated Electric Field Emissions(Below 1 GHz) .....	13
2.4	Radiated Electric Field Emissions(Above 1 GHz) .....	14
2.5	Harmonic Current Emissions .....	15
2.6	Voltage Fluctuations and Flicker .....	16
3.0	Criteria for compliance.....	17
3.1	Electrostatic Discharge.....	19
3.2	Radiated Electric Field Immunity .....	22
3.3	Electrical Fast Transients/Bursts .....	25
3.4	Surge Transients .....	27
3.5	Conducted Disturbance .....	30
3.6	Voltage Dips and Short Interruptions .....	33
APPENDIX A – TEST DATA.....		35
Conducted Emissions at Mains Power Ports.....		35
Conducted Emissions at Telecommunication Ports .....		37
Radiated Electric Field Emissions(Below 1 GHz) .....		38
Radiated Electric Field Emissions(Above 1 GHz).....		39
Harmonic Current Emissions and Voltage Fluctuations and Flicker .....		40
Test Setup Photos and Configuration .....		43
Conducted Emissions at Mains Power Ports.....		43
Conducted Emissions at Telecommunication Ports .....		44
Radiated Electric Field Emissions(Below 1 GHz) .....		45
Radiated Electric Field Emissions(Above 1 GHz).....		46
Harmonic Current Emissions and Voltage Fluctuations and Flicker .....		47
Electrostatic Discharge .....		48
Radiated Electric Field Immunity .....		48
Electrical Fast Transients/Bursts .....		49
Surge Transients.....		49
Conducted Disturbance.....		50
Voltage Dips and Short Interruptions.....		50
EUT External Photographs .....		51
EUT Internal Photographs .....		52



## KES Co., Ltd.

3701, 40, Simin-daero 365beon-gil,  
Dongan-gu, Anyang-si, Gyeonggi-do, 14057, Korea  
Tel: +82-31-425-6200 / Fax: +82-31-424-0450  
www.kes.co.kr

Report No.:  
KES-EM-22T0918-R1  
Page (4) of (62)

## 1.0 General Product Description

### Main Specifications of EUT are:

#### Video

Imaging Device	1/2" 2MP CMOS
Resolution	1920x1080, 1280x1024, 1280x960, 1280x720, 1024x768, 800x600, 800x448, 720x576, 720x480, 640x480, 640x360, 320x240
Max. Framerate	H.265/H.264: Max. 60fps/50fps(60Hz/50Hz) MJPEG: Max. 30fps/25fps(60Hz/50Hz)
Min. Illumination	Color: 0.01Lux(F1.5, 1/30sec) BW: 0Lux(IR LED)
Video Out	CVBS: 1.0Vp-p / 75Ω composite, 720x480(N), 720x576(P) for installation

#### Lens

Focal Length (Zoom Ratio)	6~222mm(37x) zoom
Max. Aperture Ratio	F1.5(Wide)~F4.6(Tele)
Angular Field of View	H: 59.3°(Wide)~1.9°(Tele) / V: 35.8°(Wide)~1.1°(Tele)
Min. Object Distance	1.5m(3.28ft)
Focus Control	Oneshot AF
Lens Type	DC auto iris

#### Pan / Tilt / Rotate

Pan Range	360° Endless
Pan Speed	Preset: 400°/sec, Manual: 0.024°/sec ~ 250°/sec
Tilt Range	190°(-5°~185°)
Tilt Speed	Preset: 300°/sec, Manual: 0.024°/sec ~ 250°/sec
Sequence	Preset(300ea), Swing, Group(6ea), Trace, Tour, Auto Run, Schedule
Preset Accuracy	±0.2°

#### Operational

Camera Title	Displayed up to 85 characters
Day & Night	Auto(ICR)
Backlight Compensation	BLC, HLC, WDR, SSDR
Wide Dynamic Range	150dB
Digital Noise Reduction	SSNR V
Digital Image Stabilization	Support(built-in gyro sensor)
Defog	Support
Motion Detection	Bea, rectangular zones
Privacy Masking	24ea, rectangular zones - Color: Grey/Green/Red/Blue/Black/White - Mosaic
Gain Control	Low / Middle / High
White Balance	ATW / AWC / Manual / Indoor / Outdoor
Electronic Shutter Speed	Minimum / Maximum / Anti flicker (2~1/12,000sec)
Video Rotation	Flip, Mirror
Analytics	Defocus detection, Directional detection, Fog detection, Face detection, Motion detection, Digital auto tracking, Appear/Disappear, Enter/Exit, Loitering, Tampering, Virtual line, Audio detection, Sound classification, Shock detection
Serial Interface	RS-485(Samsung-T, Pelco-D/P, Panasonic, Bosch, AD, GE, Vicon, Honeywell)
Alarm I/O	Input 4ea / Output 2ea
Alarm Triggers	Analytics, Network disconnect, Alarm input

This report shall not be reproduced except in full, without the written approval of KES Co., Ltd.  
The results shown in this test report refer only to the sample(s) tested unless otherwise stated.  
The authenticity of the test report, contact kes@kes.co.kr



## KES Co., Ltd.

3701, 40, Simin-daero 365beon-gil,  
Dongan-gu, Anyang-si, Gyeonggi-do, 14057, Korea  
Tel: +82-31-425-6200 / Fax: +82-31-424-0450  
www.kes.co.kr

Report No.:  
KES-EM-22T0918-R1  
Page (5) of (62)

Alarm Events	File upload via FTP and e-mail Notification via e-mail SD/SDHC/SDXC or NAS recording at event triggers Alarm output PTZ Preset
Audio In	Selectable(mic in/line in) Supply voltage: 2.5VDC(4mA), Input impedance: 2K Ohm
Audio Out	Line out, Max.output level: 1Vrms
IR Viewable Length	350m(1,148.29ft)
Auto Tracking	Support

### Network

Ethernet	RJ-45(10/100BASE-T), SFP(Optional)
Video Compression	H.265/H.264: Main/Baseline/High, MJPEG
Audio Compression	G.711 u-law /G.726 Selectable G.726(ADPCM) 8KHz, G.711 8KHz G.726: 16Kbps, 24Kbps, 32Kbps, 40Kbps AAC-LC: 48Kbps at 16KHz
Smart Codec	Manual(Sea area), WiseStream II
Bitrate Control	H.264/H.265: CBR or VBR MJPEG: VBR
Streaming	Unicast(20 users) / Multicast Multiple streaming (Up to 10 profiles)
Protocol	IPv4, IPv6, TCP/IP, UDP/IP, RTP(UDP), RTP(TCP), RTCP, RTSP, NTP, HTTP, HTTPS, SSL/TLS, DHCP, FTP, SMTP, ICMP, IGMP, SNMPv1/v2c/v3(MIB-2), ARP, DNS, DDNS, QoS, PIM-SM, UPnP, Bonjour, SRTP, LLDP
Security	HTTPS(SSL) Login Authentication Digest Login Authentication IP Address Filtering User access log 802.1X Authentication(EAP-TLS, EAP-LEAP)
Application Programming Interface	ONVIF Profile S/G/T SUNAPI(HTTP API) Wisenet open platform

### General

Webpage Language	English, Korean, Chinese, French, Italian, Spanish, German, Japanese, Russian, Swedish, Portuguese, Czech, Polish, Turkish, Dutch, Hungarian, Greek
Web Viewer	Support OS: Windows 7, 8.1, 10, Mac OS X 10.10, 10.11, 10.12 Recommended browser : Google Chrome Supported browser: MS Explore11, MS Edge, Mozilla Firefox(Window 64bit only), Apple Safari (Mac OS X only)
Edge Storage	SD/SDHC/SDXC 1slot 256GB
Memory	1024MB RAM, 256MB Flash

### Environmental & Electrical

Operating Temperature / Humidity	-50°C~+55°C (-122°F~+131°F) / Less than 90% RH
Storage Temperature / Humidity	-50°C~+60°C (-122°F~+140°F) / Less than 90% RH
Certification	IP66, IK10
Input Voltage	24VAC
Power Consumption	24VAC: Max 90W

### Mechanical

Color / Material	Body: Ivory / Plastic, Head: Black / Plastic
Product Dimensions / Weight	Ø236.9x407.7mm(9.33x16.05"), 7.1Kg(15.65 lb)
Hanging Mount (Dome)	SBP-303HF(SFP)

This report shall not be reproduced except in full, without the written approval of KES Co., Ltd.  
The results shown in this test report refer only to the sample(s) tested unless otherwise stated.  
The authenticity of the test report, contact kes@kes.co.kr



## 1.1 Test Voltage & Frequency

Unless indicated otherwise on the individual data sheet or test results, the test voltage and frequency was as indicated below.

☒ AC 230 V, 50 Hz

## 1.2 Variant Model Differences

Not applicable

## 1.3 Device Modifications

Not applicable

## 1.4 Equipment Under Test

Description	Model Number	Serial Number	Manufacturer	Remarks
Network Camera	XNP-6371RH	-	HANWHA VISION VIETNAM COMPANY LIMITED	EUT

## 1.5 Support Equipments

Description	Model Number	Serial Number	Manufacturer	Remarks
AC Adapter	-	-	-	-
Notebook	P95G001	8KM8HT2	DELL INC.	-
Notebook Adapter	LA65NS2-01	-	LITE-ON TECHNOLOGY (CHANGZHOU)CO.,LTD.	-
LED Alarm	PRO-SL	-	SENSOR PRO	-
Button Alarm	-	-	-	-
Headset	K550	-	Britz®	-
Smartphone	G8441	-	SONY	-
Controller	SPC-1010	C50E67WG10100 F	SamSung Techwin Co.,Ltd.	-
Controller Adapter	FSP060-DIBAN2	-	Zhonghan Electronics(Shenzhen) Co., Ltd.	-
SD CARD	-	-	SanDisk	-

## 1.6 External I/O Cabling

Start		END		Cable Spec.	
Description	I/O Port	Description	I/O Port	Length	Shield
Network Camera (EUT)	AC IN	AC adapter	Line	1.9	U
	RJ-45	Notebook	RJ-45	3.0	U
	RS-485	Controller	RS-485	3.0	U
	Alarm OUT	LED Alarm	Alarm IN	3.0	U
	Alarm IN	Button Alarm	Alarm OUT	3.0	U
	AUDIO IN	Headset	Line	1.8	U
	AUDIO OUT				
	SD CARD slot	SD CARD	SD CARD slot	-	-

\* Unshielded=U, Shielded=S

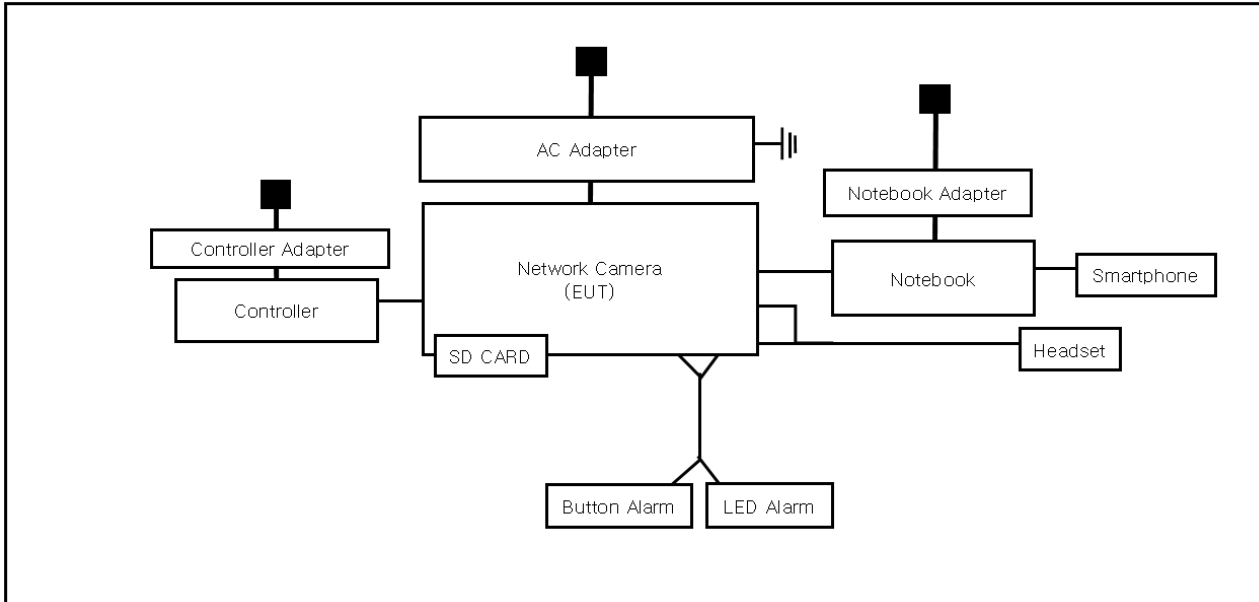
## 1.7 EUT Operating Mode(s)

Test Mode	operating
Operation	1. Check whether the image of the camera is normally output on the web page of the laptop and check whether the network is connected properly through a ping test. 2. Check whether the 1 kHz tone sound played on the smartphone is normally output to the headset. 3. After the test, check that the SD card is recorded normally.

EUT Test operating S/W		
Name	Version	Manufacture Company
Web Viewer	-	-

## 1.8 Configuration

■ AC Main  
 □ DC Main





## 1.9 Remarks when standards applied

N/A







## 1.10 Calibration Details of Equipment Used for Measurement

Test equipment and test accessories are calibrated on regular basis. The maximum time between calibrations is one year or what is recommended by the manufacturer, whichever is less.

## 1.11 Test Facility

The measurement facility is located at 473-21, Gayeo-ro, Yeosu-si, Gyeonggi-do, 12658, Korea, Republic of. The sites are constructed in conformance with the requirements of ANSI C63.4a-2017 and CISPR 16-1-4:2019

## 1.12 Laboratory Accreditations and Listings

Country	Agency	Scope of Accreditation	Logo
KOREA	<b>RRA</b>	EMI (3 m & 10 m Semi-Anechoic Chamber and conducted test site) EMS (ESD, RS, EFT/Burst, Surge, CS, Magnetic, Dips and interruptions)	 KR0100
International	<b>KOLAS</b>	EMI (3 m & 10 m Semi-Anechoic Chamber and conducted test site) EMS (ESD, RS, EFT/Burst, Surge, CS, Magnetic, Dips and interruptions)	 KT489
USA	<b>FCC</b>	3 m & 10 m Semi-Anechoic Chamber Conducted test site to perform FCC Part 15/18 measurements.	 KR0100
Canada	<b>ISED</b>	3 m & 10 m Semi-Anechoic Chamber and Conducted test site	 23298
JAPAN	<b>VCCI</b>	EMI (3 m & 10 m Semi-Anechoic Chamber and conducted test site)	 C-20136, T-20137, R-20181, G-20176
Europe	<b>TÜV SÜD</b>	EMI (3 m & 10 m Semi-Anechoic Chamber and conducted test site) EMS (ESD, RS, EFT/Burst, Surge, CS, Magnetic, Dips and interruptions)	 CARAT 001633 0004



## 2.0 Test Regulations

The emissions tests were performed according to following regulations:

☒ **EMC – Directive 2014/30/EU**

☒ EN 55032:2015/A11:2020

☒ Class A

☐ Class B

☒ EN 50130-4:2011

☒ EN 61000-3-2:2014

☒ EN 61000-3-3:2013

☒ **EMC – Regulations 2016**

☒ EN 55032:2015/A11:2020

☒ Class A

☐ Class B

☒ EN 50130-4:2011

☒ EN 61000-3-2:2014

☒ EN 61000-3-3:2013

**KES Co., Ltd.**

3701, 40, Simin-daero 365beon-gil,  
Dongan-gu, Anyang-si, Gyeonggi-do, 14057, Korea  
Tel: +82-31-425-6200 / Fax: +82-31-424-0450  
www.kes.co.kr

Report No.:

KES-EM-22T0918-R1

Page (11) of (62)

## 2.1 Conducted Emissions at Mains Power Ports

**Test Date**

Nov. 07, 2022

**Test Location**

Electro wave Shieldroom #6

**Test Equipment**

Used	Description	Model Number	Manufacturer	Serial Number	Cal. Due
<input checked="" type="checkbox"/>	EMI Test S/W	EMC32	R & S	9.12.00	-
<input checked="" type="checkbox"/>	EMI TEST RECEIVER	ESR3	R & S	101783	11, 11, 2023
<input checked="" type="checkbox"/>	LISN	ENV216	R & S	101787	11, 10, 2023
<input checked="" type="checkbox"/>	LISN	ESH2-Z5	R & S	100450	11, 10, 2023
<input checked="" type="checkbox"/>	PULSE LIMITER	ESH3-Z2	R & S	101915	11, 10, 2023

**Test Conditions**

Temperature: (22,5 ± 0,1) °C

Relative Humidity: (47,5 ± 0,1) % R.H.

**Frequency Range of Measurement**

150 kHz to 30 MHz

**Instrument Settings**

IF Band Width: 9 kHz

**Test Results**

The requirements are:

- ☒ PASS  
☐ NOT PASS  
☐ NOT APPLICABLE

**Remarks**See Appendix A for test data.

This report shall not be reproduced except in full, without the written approval of KES Co., Ltd.  
The results shown in this test report refer only to the sample(s) tested unless otherwise stated.  
The authenticity of the test report, contact kes@kes.co.kr

## 2.2 Conducted Emissions at Telecommunication Ports

### Test Date

Nov. 07, 2022

### Test Location

Electro wave Shieldroom #6

### Test Equipment

Used	Description	Model Number	Manufacturer	Serial Number	Cal. Due
<input checked="" type="checkbox"/>	EMI Test S/W	EMC32	R & S	9.12.00	-
<input checked="" type="checkbox"/>	EMI TEST RECEIVER	ESR3	R & S	101783	11, 11, 2023
<input checked="" type="checkbox"/>	LISN	ENV216	R & S	101787	11, 10, 2023
<input checked="" type="checkbox"/>	LISN	ESH2-Z5	R & S	100450	11, 10, 2023
<input checked="" type="checkbox"/>	PULSE LIMITER	ESH3-Z2	R & S	101915	11, 10, 2023
<input checked="" type="checkbox"/>	8-WIRE ISN CAT3,5	ENY81	R & S	100174	12, 28, 2022
<input type="checkbox"/>	8-WIRE ISN CAT6	ENY81-CAT6	R & S	101665	12, 28, 2022

### Test Conditions

Temperature: (22,5 ± 0,1) °C

Relative Humidity: (47,5 ± 0,1) % R.H.

### Frequency Range of Measurement

150 kHz to 30 MHz

### Instrument Settings

IF Band Width: 9 kHz

### Test Results

The requirements are:

- ☒ PASS  
☐ NOT PASS  
☐ NOT APPLICABLE

### Remarks

- See Appendix A for test data.  
- For Ethernet interfaces, measurements are required at the highest data rate supported by the interface.



## 2.3 Radiated Electric Field Emissions(Below 1 GHz)

### Test Date

Nov. 07, 2022

### Test Location

☐ OPEN AREA TEST SITE #2 ☒ SEMI ANECHOIC CHAMBER #4(10m)

### Test Equipment

Used	Description	Model Number	Manufacturer	Serial Number	Cal. Due
<input checked="" type="checkbox"/>	EMI Test S/W	EP5/RE	TOYO Corporation	6.0.0	-
<input checked="" type="checkbox"/>	EMI TEST RECEIVER	ESU26	R & S	100551	03, 31, 2023
<input checked="" type="checkbox"/>	AMPLIFIER	SCU 01	R & S	100603	11, 10, 2023
<input checked="" type="checkbox"/>	BILOG ANTENNA	VULB 9168	SCHWARZBECK	9168-461	04, 27, 2024
<input checked="" type="checkbox"/>	ATTENUATOR	8491A	HP	32173	03, 08, 2023

### Test Conditions

Temperature: (22,4 ± 0,1) °C  
Relative Humidity: (47,3 ± 0,1) % R.H.

### Frequency Range of Measurement

30 MHz to 1 GHz

### Instrument Settings

IF Band Width: 120 kHz

### Test Results

The requirements are:

- ☒ PASS  
☐ NOT PASS  
☐ NOT APPLICABLE

### Remarks

See Appendix A for test data.

**KES Co., Ltd.**

3701, 40, Simin-daero 365beon-gil,  
Dongan-gu, Anyang-si, Gyeonggi-do, 14057, Korea  
Tel: +82-31-425-6200 / Fax: +82-31-424-0450  
www.kes.co.kr

Report No.:

KES-EM-22T0918-R1

Page (14) of (62)

## 2.4 Radiated Electric Field Emissions(Above 1 GHz)

**Test Date**

Nov. 08, 2022

**Test Location**

SEMI ANECHOIC CHAMBER #3

**Test Equipment**

Used	Description	Model Number	Manufacturer	Serial Number	Cal. Due
<input checked="" type="checkbox"/>	EMI Test S/W	EP5/RE	TOYO Corporation	6.0.0	-
<input checked="" type="checkbox"/>	EMI TEST RECEIVER	ESR7	R & S	101190	08, 01, 2023
<input checked="" type="checkbox"/>	PREAMPLIFIER	8449B	AGILENT	3008A01967	04, 01, 2023
<input checked="" type="checkbox"/>	ATTENUATOR	8491A	HP	35496	03, 08, 2023
<input checked="" type="checkbox"/>	DOUBLE RIDGED HORN ANTENNA	SAS-571	A.H.SYSTEM,INC	781	03, 03, 2023

**Test Conditions**

Temperature: (22,7 ± 0,1) °C

Relative Humidity: (47,4 ± 0,1) % R.H.

**Frequency Range of Measurement**

1 GHz to 6 GHz

**Instrument Settings**

IF Band Width: 1 MHz

**Test Results**

The requirements are:

- ☒ PASS  
☐ NOT PASS  
☐ NOT APPLICABLE

**Remarks**See Appendix A for test data.

This report shall not be reproduced except in full, without the written approval of KES Co., Ltd.  
The results shown in this test report refer only to the sample(s) tested unless otherwise stated.  
The authenticity of the test report, contact kes@kes.co.kr



## KES Co., Ltd.

3701, 40, Simin-daero 365beon-gil,  
Dongan-gu, Anyang-si, Gyeonggi-do, 14057, Korea  
Tel: +82-31-425-6200 / Fax: +82-31-424-0450  
www.kes.co.kr

Report No.:

KES-EM-22T0918-R1

Page (15) of (62)

## 2.5 Harmonic Current Emissions

### Test Date

Nov. 07, 2022

### Test Location

Electro wave Shieldroom #3

### Test Equipment

Used	Description	Model Number	Manufacturer	Serial Number	Cal. Due
<input checked="" type="checkbox"/>	EMI Test S/W	net.control	EM TEST	2.1.4	-
<input checked="" type="checkbox"/>	DIGITAL POWER ANALYZER	DPA 500N	EM TEST	V1024106759	04, 06, 2023
<input checked="" type="checkbox"/>	POWER SOURCE	ACS 500N6	EM TEST	V1024106760	-

### Test Conditions

Temperature: (21,9 ± 0,1) °C

Relative Humidity: (45,1 ± 0,1) % R.H.

### Classification of Equipment for Harmonic Current Emissions

- ☒ Class A
- ☐ Class B
- ☐ Class C(Below 25 W)
- ☐ Class C(Above 25 W)
- ☐ Class D

### Test Results

The requirements are:

- ☒ PASS
- ☐ NOT PASS
- ☐ NOT APPLICABLE

### Remarks

See Appendix A for test data.

This report shall not be reproduced except in full, without the written approval of KES Co., Ltd.  
The results shown in this test report refer only to the sample(s) tested unless otherwise stated.  
The authenticity of the test report, contact kes@kes.co.kr



## 2.6 Voltage Fluctuations and Flicker

### Test Date

Nov. 07, 2022

### Test Location

Electro wave Shieldroom #3

### Test Equipment

Used	Description	Model Number	Manufacturer	Serial Number	Cal. Due
<input checked="" type="checkbox"/>	EMI Test S/W	net.control	EM TEST	2.1.4	-
<input checked="" type="checkbox"/>	DIGITAL POWER ANALYZER	DPA 500N	EM TEST	V1024106759	04, 06, 2023
<input checked="" type="checkbox"/>	POWER SOURCE	ACS 500N6	EM TEST	V1024106760	-

### Test Conditions

Temperature: (21,9 ± 0,1) °C  
Relative Humidity: (45,1 ± 0,1) % R.H.

### Test Results

The requirements are:

- ☒ PASS  
☐ NOT PASS  
☐ NOT APPLICABLE

### Remarks

See Appendix A for test data.



### 3.0 Criteria for compliance

Criteria for compliance was based on the following guidelines:

EN 50130-4:2011 Alarm systems-Part 4: Electromagnetic compatibility Product family  
standard: Immunity requirements for components of fire, intruder and social alarm systems

**The variety and the diversity of the apparatus within the scope of this document makes it difficult to define precise criteria for the evaluation of the immunity test results.**

**If as a result of the application of the tests defined in this standard, the apparatus becomes dangerous or unsafe then the apparatus shall be deemed to have failed the test.**

**A functional description and a definition of performance by the manufacture and noted in the test report, based on the following criteria:**

#### **Electrostatic discharge**

There shall be no damage, malfunction or change of status due to the conditioning.

Flickering of an indicator during the application of discharge is permissible, providing that is no residual change in the EUT or any change in outputs, which could be interpreted by associated equipment as a change.

#### **Radiated electromagnetic fields**

There shall be no damage, malfunction or change of status due to the conditioning.

Flickering of an indicator during the application of discharge is permissible, providing which could be interpreted by associated equipment as a change, and no such

Flickering of indicators occurs at a field strength of 3 V/m.

For components of CCTV systems, where the picture is allowed at 10 V/m, providing.

(a) there is no permanent damage or change to EUT

(e.g. no corruption of memory or changes to programmable setting etc.)

(b) at 3 V/m, any deterioration of the picture is so minor that the system could still be used; and

(c) there is no observable deterioration of the picture at 1 V/m.

---

**Fast transient burst / slow high energy voltage surge**

There shall be no damage, malfunction or change of status due to the conditioning.  
Flickering of an indicator during the application of discharge is permissible, providing  
That there is no residual is permissible, providing that there is no residual change in the EUT or  
any  
change in outputs, which could be interpreted by associated equipment as a change.

**Conducted RF immunity**

There shall be no damage, malfunction or change of status due to the conditioning.  
Flickering of an indicator during the application of discharge is permissible, providing  
That there is no residual is permissible, providing that there is no residual change in the EUT or  
any  
change in outputs, which could be interpreted by associated equipment as a change,  
and no such flickering of indicators oeuvres at  $U = 130 \text{ dB}\mu\text{V}$ .  
For component of CCTV systems, where the status is monitored by observing the TV picture,  
then deterioration of the picture is allowed at  $U = 140 \text{ dB}\mu\text{V}$ , providing:  
(a) there is no permanent damage or change to the EUT  
(e.g. no corruption of memory or changes to programmable settings etc.)  
(b) at  $U = 130 \text{ dB}\mu\text{V}$ , any deterioration of the picture is so minor that the system could  
still be used; and  
(c) there in no observable deterioration of the picture at  $U = 120 \text{ dB}\mu\text{V}$ .

**Voltage dip/interruption / Voltage variation**

There shall be no damage, malfunction or change of status due to the conditioning.  
Flickering of an indicator during the conditioning is permissible, providing that there is no  
residual  
change in the EUT or any change in outputs, which could be interpreted by associated  
equipment  
as a change. The EUT shall meet the acceptance criteria for the functional test, after the  
conditioning.



### 3.1 Electrostatic Discharge

#### Reference Standard

EN 61000-4-2:2009

#### Test Date

Nov. 08, 2022

#### Test Location

EMS-ESD: Electro wave Shieldroom #7

#### Test Equipment

Used	Description	Model Number	Manufacturer	Serial Number	Cal. Due
<input checked="" type="checkbox"/>	ESD SIMULATOR	ESS-2000	Noise Ken	ESS01Z0454	02, 24, 2023
<input checked="" type="checkbox"/>	HCP	-	KES	-	-
<input checked="" type="checkbox"/>	VCP	-	Noise Ken	-	-

#### Test Conditions

Temperature: (22,5 ± 0,1) °C  
Relative Humidity: (46,6 ± 0,1) % R.H.  
Atmospheric Pressure: (100,7 ± 0,0) kPa

#### Test Specifications

Discharge Factor: ≥ 1 s

Discharge Impedance: 330 ohm / 150 pF

Kind of Discharge: Air, Contact (direct and indirect)

Polarity: Positive and Negative

Number of Discharge: 10 at all locations for Air discharge  
10 at all locations for Contact discharge

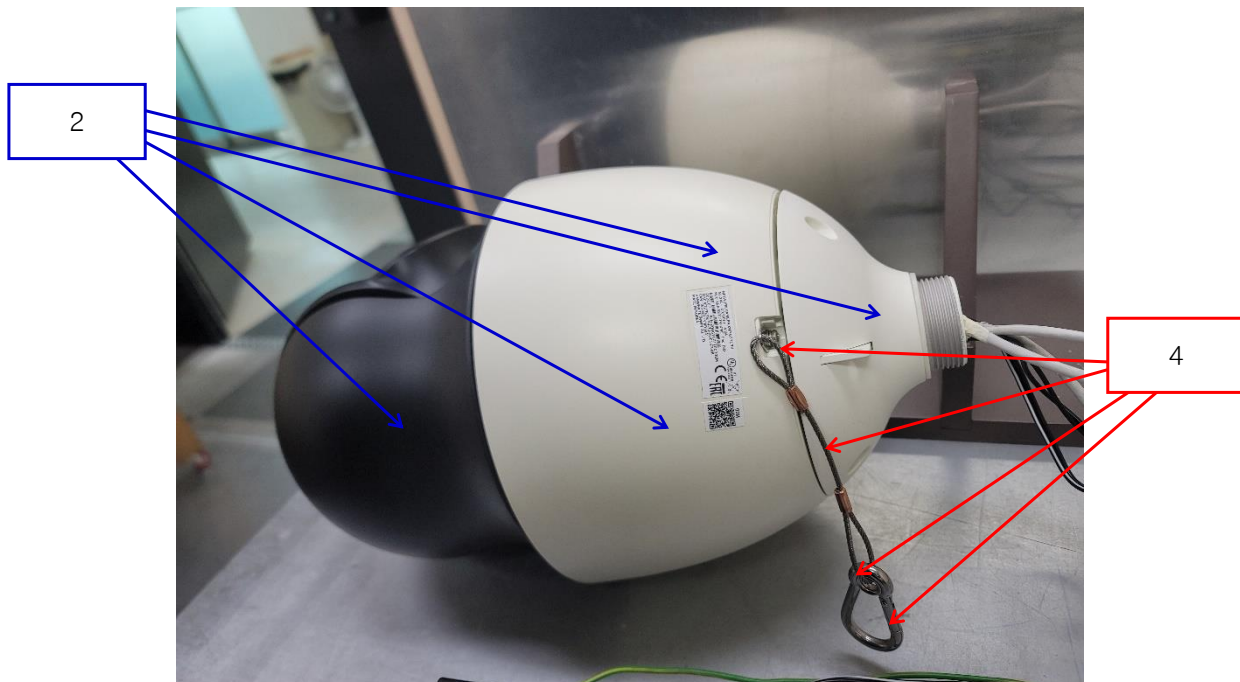
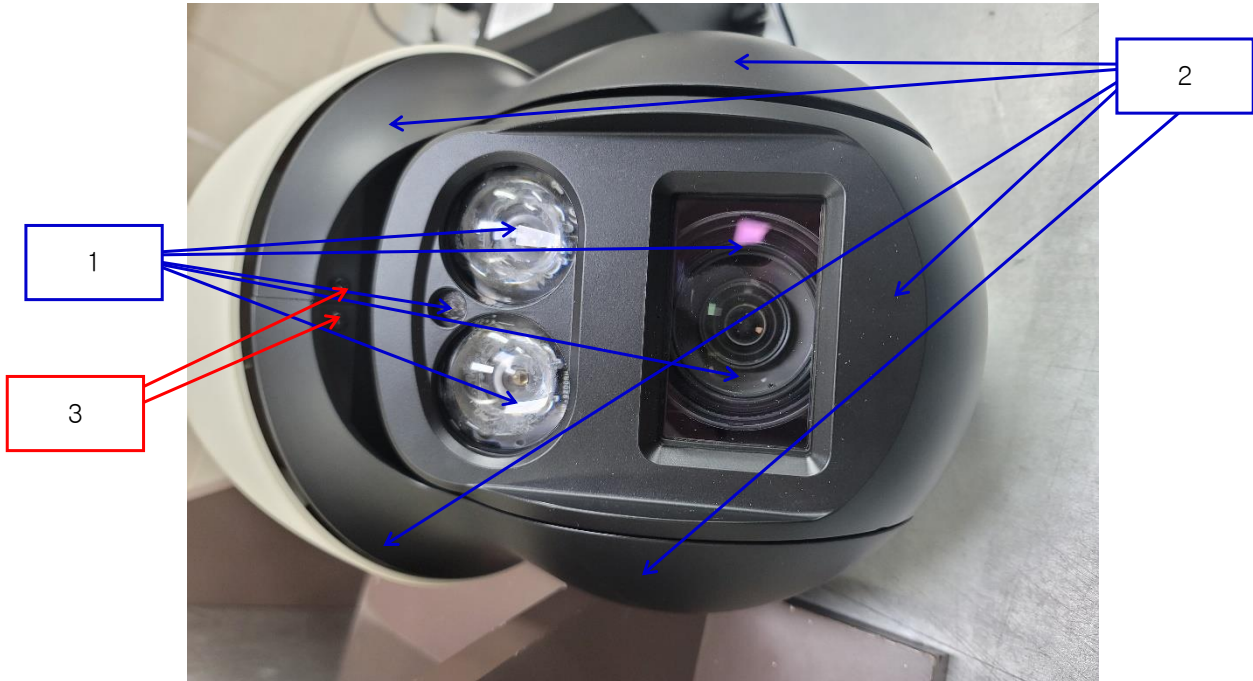
Discharge Voltage:	Contact	Air	HCP	VCP
	<input type="checkbox"/> 2 kV	<input checked="" type="checkbox"/> 2 kV	<input type="checkbox"/> 2 kV	<input type="checkbox"/> 2 kV
	<input type="checkbox"/> 4 kV	<input checked="" type="checkbox"/> 4 kV	<input type="checkbox"/> 4 kV	<input type="checkbox"/> 4 kV
	<input checked="" type="checkbox"/> 6 kV	<input type="checkbox"/> 6 kV	<input checked="" type="checkbox"/> 6 kV	<input checked="" type="checkbox"/> 6 kV
	<input type="checkbox"/> 8 kV	<input checked="" type="checkbox"/> 8 kV	<input type="checkbox"/> 8 kV	<input type="checkbox"/> 8 kV
	<input type="checkbox"/> 15 kV	<input type="checkbox"/> 15 kV	<input type="checkbox"/> 15 kV	<input type="checkbox"/> 15 kV

Notes: HCP: Horizontal coupling plane  
VCP: Vertical coupling plane

Required Performance Criteria: ☒ Complied

**Location of Discharge:**

Air
Contact



**KES Co., Ltd.**

3701, 40, Simin-daero 365beon-gil,  
Dongan-gu, Anyang-si, Gyeonggi-do, 14057, Korea  
Tel: +82-31-425-6200 / Fax: +82-31-424-0450  
www.kes.co.kr

Report No.:

KES-EM-22T0918-R1

Page (21) of (62)

**Test Data**

No.	Test Point	Discharge Method	Observations	Remarks
1	HCP Contact	Contact Discharge	Complied	-
2	VCP Contact	Contact Discharge	Complied	-

**Direct Discharge**

No.	Test Point	Discharge Method	Observations	Remarks
1	Lense enclosure	Air Discharge	Complied	-
2	Enclosure 1	Air Discharge	Complied	-
3	Screw	Contact Discharge	Complied	-
4	Enclosure 2	Contact Discharge	Complied	-

Note: "Blank" = Not performed

Observations:

Complied – No degradation of function

**Test Results**

- ☒ PASS Required Performance Criteria  
☐ NOT PASS Required Performance Criteria

**Remarks**

PASS Required Performance Criteria

This report shall not be reproduced except in full, without the written approval of KES Co., Ltd.  
The results shown in this test report refer only to the sample(s) tested unless otherwise stated.  
The authenticity of the test report, contact kes@kes.co.kr

## 3.2 Radiated Electric Field Immunity

### Reference Standard

EN IEC 61000-4-3:2020

### Test Date

Nov. 06, 2022

### Test Location

EMS-RS: ☐ SEMI ANECHOIC CHAMBER #2 ☒ SEMI ANECHOIC CHAMBER #3

### Test Equipment

Used	Description	Model Number	Manufacturer	Serial Number	Cal. Due
<input checked="" type="checkbox"/>	EMS Test S/W	EMC32	R & S	10.10.02	-
<input checked="" type="checkbox"/>	SIGNAL GENERATOR	SMB 100A	Rohde & Schwarz	108252	08, 01, 2023
<input checked="" type="checkbox"/>	HIGH POWER DUAL AMP	SSA532	SUNGSAN	SSA532-001	-
<input checked="" type="checkbox"/>	POWER METER	E4419B	Agilent	GB40203000	03, 31, 2023
<input checked="" type="checkbox"/>	AVERAGE POWER SENSOR	E9301A	Agilent	MY52170007	04, 04, 2023
<input checked="" type="checkbox"/>	AVERAGE POWER SENSOR	E9301A	Agilent	MY41498669	04, 04, 2023
<input checked="" type="checkbox"/>	STACKED DOUBLE LOG-PER- ANTENNA	STPL9128 E	Schwarzbeck	9128ES-121	-
<input checked="" type="checkbox"/>	DOUBLE RIDGED HORN ANTENNA	SAS-571	A.H.SYSTEM,INC	781	03, 03, 2023

### Test Conditions

Temperature: (22,8 ± 0,1) °C  
Relative Humidity: (46,8 ± 0,1) % R.H.  
Atmospheric Pressure: (100,7 ± 0,0) kPa



## KES Co., Ltd.

3701, 40, Simin-daero 365beon-gil,  
Dongan-gu, Anyang-si, Gyeonggi-do, 14057, Korea  
Tel: +82-31-425-6200 / Fax: +82-31-424-0450  
www.kes.co.kr

Report No.:

KES-EM-22T0918-R1

Page (23) of (62)

### Test Specifications

Antenna Polarization: Horizontal & vertical unless indicated otherwise

Antenna Distance: ☒ 3 m

Field Strength: ☐ 1 V/m ☐ 3 V/m  
☒ 10 V/m

Frequency Range: ☐ 80 MHz to 1 GHz ☐ 1,4 GHz to 2,7 GHz  
☒ 80 MHz to 2,7 GHz

Modulation: ☒ AM, 80 %, 1 kHz sine wave  
☒ PM, 1 Hz (0,5 s ON : 0,5 s OFF)

Frequency step: ☒ 1 % step

Dwell Time: ☐ 1 s ☒ 3 s

# of Sides Radiated: ☒ 4

Required Performance Criteria: ☒ Complied

This report shall not be reproduced except in full, without the written approval of KES Co., Ltd.  
The results shown in this test report refer only to the sample(s) tested unless otherwise stated.  
The authenticity of the test report, contact kes@kes.co.kr

**KES Co., Ltd.**

3701, 40, Simin-daero 365beon-gil,  
Dongan-gu, Anyang-si, Gyeonggi-do, 14057, Korea  
Tel: +82-31-425-6200 / Fax: +82-31-424-0450  
www.kes.co.kr

Report No.:

KES-EM-22T0918-R1

Page (24) of (62)

**Test Data**

Side Exposed	Observations	
	Horizontal	Vertical
Front	Complied	Complied
Right	Complied	Complied
Back	Complied	Complied
Left	Complied	Complied

Note: "Blank" = Not performed

Observations:

Complied – No degradation of function

**Test Results**

- ☒ PASS Required Performance Criteria  
☐ NOT PASS Required Performance Criteria

**Remarks**PASS Required Performance Criteria



### 3.3 Electrical Fast Transients/Bursts

**Reference Standard**

EN 61000-4-4:2012

**Test Date**

Nov. 08, 2022

**Test Location**

EMS-EFT: Electro wave Shieldroom #7

**Test Equipment**

Used	Description	Model Number	Manufacturer	Serial Number	Cal. Due
<input checked="" type="checkbox"/>	EMS Test S/W	iec.control	EM TEST	5.4.8	-
<input checked="" type="checkbox"/>	ULTRA COMPACT SIMULATOR	UCS 500N7	EM TEST	P1608172950	12, 03, 2022
<input checked="" type="checkbox"/>	MOTOR VARIAC	MV2616	EM TEST	P1552169719	03, 31, 2023
<input checked="" type="checkbox"/>	CAPACITIVE COUPLING CLAMP	HFK	EM TEST	P1633183115	12, 03, 2022

**Test Conditions**

Temperature: (22,5 ± 0,1) °C  
Relative Humidity: (46,6 ± 0,1) % R.H.  
Atmospheric Pressure: (100,7 ± 0,0) kPa

**Test Specifications**

Pulse Amplitude & Polarity:  
(AC Power Lines) ☐ ± 1.0 kV ☒ ± 2.0 kV  
☐ ± 4.0 kV

Pulse Amplitude & Polarity:  
(Other supply / Signal Lines) ☐ ± 0.5 kV ☒ ± 1.0 kV  
☐ ± 2.0 kV

Burst Period: ☒ 300 ms ☐ 2 s

Repetition Rate: ☐ 5 kHz ☒ 100 kHz

Duration of Test Voltage: ☒ ≥ 1 min

Required Performance Criteria: ☒ Complied

## Test Data

☒ Input a.c. power ports – Coupling/Decoupling Network used

Mode of Application	Observations	
	(+) Burst (kV)	(-) Burst (kV)
L	Complied	Complied
N	Complied	Complied
PE	-	-
L – N	Complied	Complied
L – PE	-	-
N – PE	-	-
L – N – PE	-	-

☐ Input d.c. power ports – Coupling/Decoupling Network used

Mode of Application	Observations	
	(+) Burst (kV)	(-) Burst (kV)
-	-	-

☒ Signal ports and telecommunication ports – Coupling Clamp used

Mode of Application	Observations	
	(+) Burst (kV)	(-) Burst (kV)
RJ-45	Complied	Complied
Alarm IN, Alarm OUT	Complied	Complied
RS-485	Complied	Complied

Note: “Blank” = Not performed

Observations:

Complied – No degradation of function

## Test Results

☒ PASS Required Performance Criteria

☐ NOT PASS Required Performance Criteria

## Remarks

PASS Required Performance Criteria

**KES Co., Ltd.**

3701, 40, Simin-daero 365beon-gil,  
Dongan-gu, Anyang-si, Gyeonggi-do, 14057, Korea  
Tel: +82-31-425-6200 / Fax: +82-31-424-0450  
www.kes.co.kr

Report No.:

KES-EM-22T0918-R1

Page (27) of (62)

### 3.4 Surge Transients

**Reference Standard**

EN 61000-4-5:2014/A1:2017

**Test Date**

Nov. 08, 2022

**Test Location**

EMS-Surge: Electro wave Shieldroom #7

**Test Equipment**

Used	Description	Model Number	Manufacturer	Serial Number	Cal. Due
<input checked="" type="checkbox"/>	EMS Test S/W	iec.control	EM TEST	5.4.8	-
<input checked="" type="checkbox"/>	ULTRA COMPACT SIMULATOR	UCS 500N7	EM TEST	P1608172950	12, 03, 2022
<input checked="" type="checkbox"/>	MOTOR VARIAC	MV2616	EM TEST	P1552169719	03, 31, 2023
<input checked="" type="checkbox"/>	CDN	CNV 508N1	EM TEST	P1610176296	12, 03, 2022

**Test Conditions**

Temperature: (22,5 ± 0,1) °C  
Relative Humidity: (46,6 ± 0,1) % R.H.  
Atmospheric Pressure: (100,7 ± 0,0) kPa

This report shall not be reproduced except in full, without the written approval of KES Co., Ltd.  
The results shown in this test report refer only to the sample(s) tested unless otherwise stated.  
The authenticity of the test report, contact kes@kes.co.kr



## KES Co., Ltd.

3701, 40, Simin-daero 365beon-gil,  
Dongan-gu, Anyang-si, Gyeonggi-do, 14057, Korea  
Tel: +82-31-425-6200 / Fax: +82-31-424-0450  
www.kes.co.kr

Report No.:  
KES-EM-22T0918-R1  
Page (28) of (62)

### Test Specifications

#### AC Power Lines

Source Impedance: 12 ohm for common Mode and 2 ohm for differential Mode

Surge Amplitude :

Common Mode

☒ (0,5 / 1,0 / 2,0) kV

Differential Mode

☒ (0,5 / 1,0) kV

Number of Surges:

☒ 5 surges per angle

Angle:

☒ 0°, 90°, 180°, 270° (input a.c. power port)

Polarity:

☒ Positive & Negative

Repetition Rate:

☐ 1 surge per min    ☒ 1 surge per 30 sec.

Required Performance Criteria: ☒ Complied

#### Other supply / Signal Lines

Source Impedance:

42 ohm for common Mode

Surge Amplitude:

Common Mode

☒ (0,5 / 1,0) kV

Number of Surges:

☒ 5 Surges

Polarity:

☒ Positive & Negative

Repetition Rate:

☐ 1 surge per min    ☒ 1 surge per 30 sec.

Required Performance Criteria: ☒ Complied

**KES Co., Ltd.**

3701, 40, Simin-daero 365beon-gil,  
Dongan-gu, Anyang-si, Gyeonggi-do, 14057, Korea  
Tel: +82-31-425-6200 / Fax: +82-31-424-0450  
www.kes.co.kr

Report No.:

KES-EM-22T0918-R1

Page (29) of (62)

**Test Data**☒ Line to Line – Differential Mode

Mode of Application	Observations	
	(+) Surge (kV)	(-) Surge (kV)
L – N	Complied	Complied

☐ Line to Earth – Common Mode

Mode of Application	Observations	
	(+) Surge (kV)	(-) Surge (kV)
L – PE	-	-
N – PE	-	-

**Signal Lines**☒ Line to Earth – Common Mode

Mode of Application	Coupling Method	Observations	
		(+) Surge (kV)	(-) Surge (kV)
RJ-45	CDN	Complied	Complied
	LINE	Complied	Complied

Note: "Blank" = Not performed

Observations:

Complied – No degradation of function

**Test Results**☒ PASS Required Performance Criteria☐ NOT PASS Required Performance Criteria**Remarks**PASS Required Performance Criteria

This report shall not be reproduced except in full, without the written approval of KES Co., Ltd.

The results shown in this test report refer only to the sample(s) tested unless otherwise stated.

The authenticity of the test report, contact kes@kes.co.kr

**KES Co., Ltd.**

3701, 40, Simin-daero 365beon-gil,  
Dongan-gu, Anyang-si, Gyeonggi-do, 14057, Korea  
Tel: +82-31-425-6200 / Fax: +82-31-424-0450  
www.kes.co.kr

Report No.:

KES-EM-22T0918-R1

Page (30) of (62)

### 3.5 Conducted Disturbance

**Reference Standard**

EN 61000-4-6:2014

**Test Date**

Nov. 08, 2022

**Test Location**

EMS-CS: Electro wave Shieldroom #6

**Test Equipment**

Used	Description	Model Number	Manufacturer	Serial Number	Cal. Due
<input checked="" type="checkbox"/>	EMS Test S/W	icd.control	EM TEST	5.3.12	-
<input checked="" type="checkbox"/>	CONTINUOUS WAVE SIMULATOR	CWS 500N1.4	EM TEST	P1602169880	11, 10, 2023
<input checked="" type="checkbox"/>	ATTENUATOR	ATT 6/80	EM TEST	P1614178148	11, 10, 2023
<input checked="" type="checkbox"/>	CDN	CDN M016	TESEQ	43694	11, 10, 2023
<input checked="" type="checkbox"/>	CDN	CDN M016	TESEQ	43697	11, 10, 2023
<input checked="" type="checkbox"/>	CDN	CDN T8RJ45	EM TEST	0909-09	08, 01, 2023
<input checked="" type="checkbox"/>	EM CLAMP	KEMZ 801A	TESEQ	44099	11, 25, 2022

**Test Conditions**

Temperature: (22,9 ± 0,1) °C  
Relative Humidity: (47,1 ± 0,1) % R.H.  
Atmospheric Pressure: (100,8 ± 0,0) kPa

This report shall not be reproduced except in full, without the written approval of KES Co., Ltd.  
The results shown in this test report refer only to the sample(s) tested unless otherwise stated.  
The authenticity of the test report, contact kes@kes.co.kr



## KES Co., Ltd.

3701, 40, Simin-daero 365beon-gil,  
Dongan-gu, Anyang-si, Gyeonggi-do, 14057, Korea  
Tel: +82-31-425-6200 / Fax: +82-31-424-0450  
www.kes.co.kr

Report No.:

KES-EM-22T0918-R1

Page (31) of (62)

### Test Specifications

Frequency range:

☒ 150 kHz to 100 MHz

☐ 150 kHz to 80 MHz

Voltage Level:

☐ 1 Vrms

☐ 3 Vrms

☒ 10 Vrms

Modulation:

☒ AM, 80 %, 1 kHz sine wave

☒ PM, 1 Hz (0,5 s ON : 0,5 s OFF)

Frequency step:

☒ 1 % step

Dwell Time:

☐ 1 s

☒ 3 s

Required Performance Criteria: ☒ Complied

This report shall not be reproduced except in full, without the written approval of KES Co., Ltd.  
The results shown in this test report refer only to the sample(s) tested unless otherwise stated.  
The authenticity of the test report, contact kes@kes.co.kr

**KES Co., Ltd.**

3701, 40, Simin-daero 365beon-gil,  
Dongan-gu, Anyang-si, Gyeonggi-do, 14057, Korea  
Tel: +82-31-425-6200 / Fax: +82-31-424-0450  
www.kes.co.kr

Report No.:

KES-EM-22T0918-R1

Page (32) of (62)

**Test Data**☒ Input a.c. power ports

Coupling Location (Line Stressed)	Coupling Method	Observations
L – N	CDN	Complied

☐ Input d.c. power ports

Coupling Location (Line Stressed)	Coupling Method	Observations
-	-	-

☒ Signal ports and telecommunication ports

Coupling Location (Line Stressed)	Coupling Method	Observations
RJ-45	CDN	Complied
Alarm IN, Alarm OUT	Clamp	Complied
RS-485	Clamp	Complied

Notes: CDN = Coupling Decoupling Network  
"blank" = Not performed

Observations:

Complied – No degradation of function

**Test Results**

- ☒ PASS Required Performance Criteria  
☐ NOT PASS Required Performance Criteria

**Remarks**PASS Required Performance Criteria

This report shall not be reproduced except in full, without the written approval of KES Co., Ltd.  
The results shown in this test report refer only to the sample(s) tested unless otherwise stated.  
The authenticity of the test report, contact kes@kes.co.kr



**KES Co., Ltd.**

3701, 40, Simin-daero 365beon-gil,  
Dongan-gu, Anyang-si, Gyeonggi-do, 14057, Korea  
Tel: +82-31-425-6200 / Fax: +82-31-424-0450  
www.kes.co.kr

Report No.:

KES-EM-22T0918-R1

Page (33) of (62)

### 3.6 Voltage Dips and Short Interruptions

**Reference Standard**

EN IEC 61000-4-11:2020

**Test Date**

Nov. 08, 2022

**Test Location**

EMS-Voltage dip: Electro wave Shieldroom #7

**Test Equipment**

Used	Description	Model Number	Manufacturer	Serial Number	Cal. Due
<input checked="" type="checkbox"/>	EMS Test S/W	iec.control	EM TEST	5.4.8	-
<input checked="" type="checkbox"/>	ULTRA COMPACT SIMULATOR	UCS 500N7	EM TEST	P1608172950	03, 31, 2023
<input checked="" type="checkbox"/>	MOTOR VARIAC	MV2616	EM TEST	P1552169719	03, 31, 2023

**Test Conditions**

Temperature: (22,5 ± 0,1) °C  
Relative Humidity: (46,6 ± 0,1) % R.H.  
Atmospheric Pressure: (100,7 ± 0,0) kPa

This report shall not be reproduced except in full, without the written approval of KES Co., Ltd.  
The results shown in this test report refer only to the sample(s) tested unless otherwise stated.  
The authenticity of the test report, contact kes@kes.co.kr

**KES Co., Ltd.**

3701, 40, Simin-daero 365beon-gil,  
Dongan-gu, Anyang-si, Gyeonggi-do, 14057, Korea  
Tel: +82-31-425-6200 / Fax: +82-31-424-0450  
www.kes.co.kr

Report No.:  
KES-EM-22T0918-R1  
Page (34) of (62)

**Test Specifications & Observations/Remarks****- Voltage Dips and Short Interruptions**

<u>Test Level</u>	<u>Duration [in period/ms (50 Hz)]</u>	<u>Results</u>
<input checked="" type="checkbox"/> 20 % dip	<input checked="" type="checkbox"/> 250 / 5 000	<u>Complied</u>
<input checked="" type="checkbox"/> 30 % dip	<input checked="" type="checkbox"/> 25 / 500	<u>Complied</u>
<input checked="" type="checkbox"/> 60 % dip	<input checked="" type="checkbox"/> 10 / 200	<u>Complied</u>
<input checked="" type="checkbox"/> 100 % dip	<input checked="" type="checkbox"/> 250 / 5 000	<u>Complied</u>

**- Voltage variations**

<input checked="" type="checkbox"/> Unom + 10 %	<input checked="" type="checkbox"/> 253.0 V (ac)	<u>Complied</u>
<input checked="" type="checkbox"/> Unom - 15 %	<input checked="" type="checkbox"/> 195.5 V (ac)	<u>Complied</u>

**Observations:**

Complied – No degradation of function

Degradation - See "Remarks "

**Test Results**

- ☒ PASS Required Performance Criteria  
☐ NOT PASS Required Performance Criteria  
☐ NOT APPLICABLE

**Remarks**

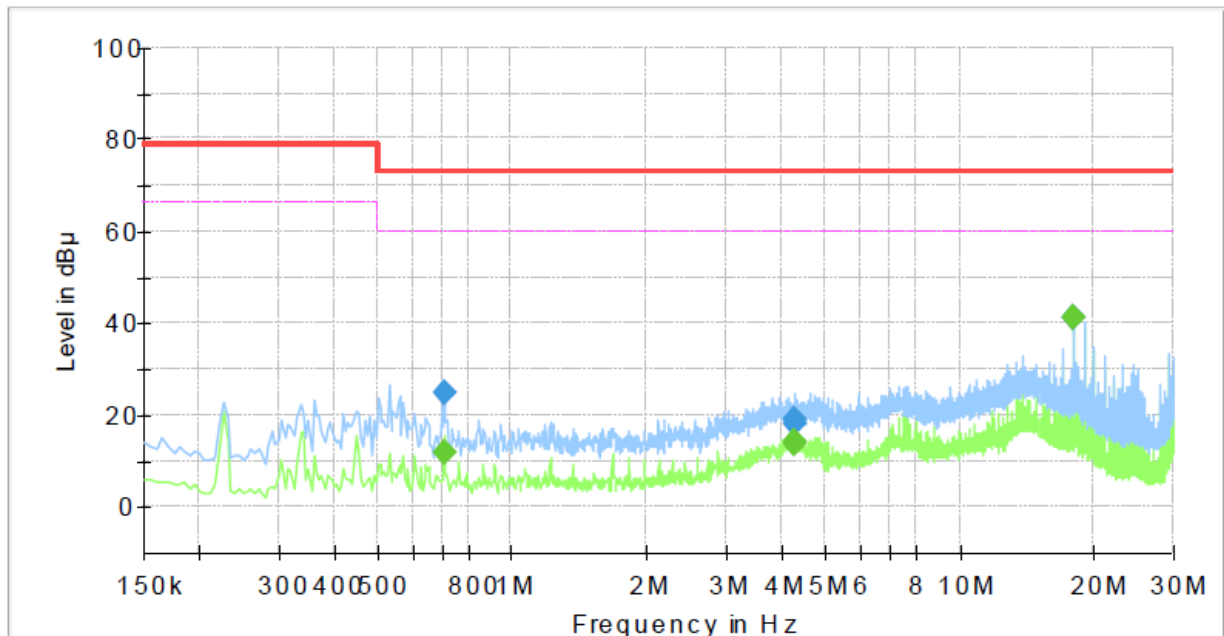
PASS Required Performance Criteria

## APPENDIX A – TEST DATA

### Conducted Emissions at Mains Power Ports [HOT]

#### Common Information

Test Description:	Conducted Emission
Model No.:	XNP-6371RH
Phase:	L1
Mode:	
Operator Name:	KES



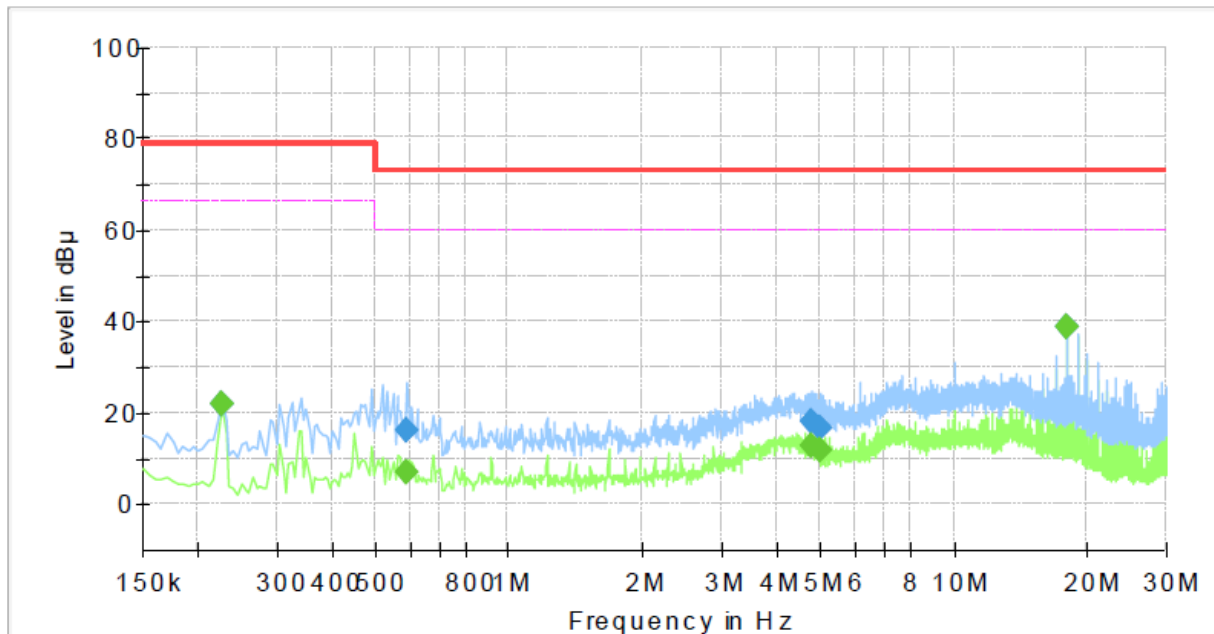
#### Final Result

Frequency (MHz)	QuasiPeak (dBμV)	CAverage (dBμV)	Limit (dBμV)	Margin (dB)	Meas. Time (ms)	Bandwidth (kHz)	Line	Corr. (dB)
0.705000	---	11.84	60.00	48.16	1000.0	9.000	L1	19.9
0.705000	24.94	---	73.00	48.06	1000.0	9.000	L1	19.9
4.265000	---	13.54	60.00	46.46	1000.0	9.000	L1	19.8
4.265000	17.84	---	73.00	55.16	1000.0	9.000	L1	19.8
4.280000	---	14.13	60.00	45.87	1000.0	9.000	L1	19.8
4.280000	18.91	---	73.00	54.09	1000.0	9.000	L1	19.8
17.920000	---	41.15	60.00	18.85	1000.0	9.000	L1	20.0
17.920000	41.29	---	73.00	31.71	1000.0	9.000	L1	20.0

[NEUTRAL]

## Common Information

Test Description: Conducted Emission  
 Model No.: XNP-6371RH  
 Phase: N  
 Mode:  
 Operator Name: KES



## Final\_Result

Frequency (MHz)	QuasiPeak (dBμV)	CAverage (dBμV)	Limit (dBμV)	Margin (dB)	Meas. Time (ms)	Bandwidth (kHz)	Line	Corr. (dB)
0.225000	---	21.73	66.00	44.27	1000.0	9.000	N	19.5
0.225000	21.92	---	79.00	57.08	1000.0	9.000	N	19.5
0.590000	---	6.93	60.00	53.07	1000.0	9.000	N	19.8
0.590000	16.11	---	73.00	56.89	1000.0	9.000	N	19.8
4.805000	---	12.85	60.00	47.15	1000.0	9.000	N	19.7
4.805000	18.16	---	73.00	54.84	1000.0	9.000	N	19.7
5.020000	---	11.47	60.00	48.53	1000.0	9.000	N	19.6
5.020000	16.52	---	73.00	56.48	1000.0	9.000	N	19.6
17.920000	---	38.74	60.00	21.26	1000.0	9.000	N	20.0
17.920000	38.87	---	73.00	34.13	1000.0	9.000	N	20.0

### ◆ Calculation

QuasiPeak[dBuV] / CAverage [dBuV] = Reading Value[dBuV] + Corr. [dB]

QuasiPeak / CAverage : The Final Value

Reading Value : Not shown in the table.

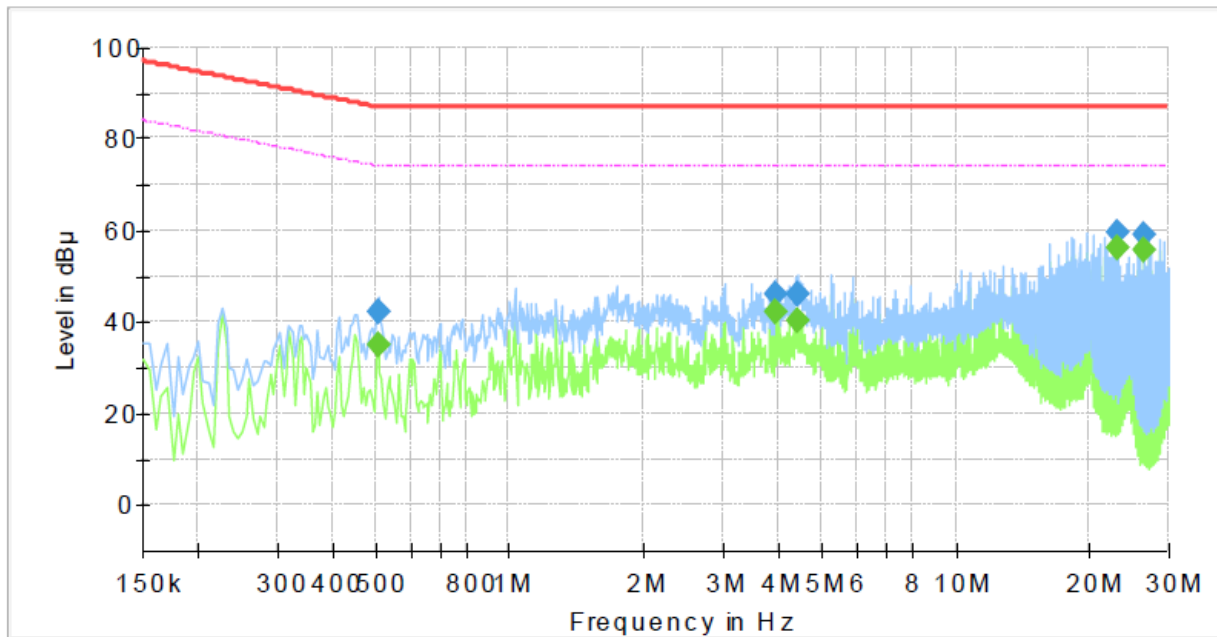
Corr. : Correction values (LISN FACTOR + (Cable Loss + Pulse Limiter FACTOR))

This report shall not be reproduced except in full, without the written approval of KES Co., Ltd.  
 The results shown in this test report refer only to the sample(s) tested unless otherwise stated.  
 The authenticity of the test report, contact kes@kes.co.kr

## Conducted Emissions at Telecommunication Ports [100 Mbps]

### Common Information

Test Description:	Telecommunication Emission
Model No.:	XNP-6371RH
Mode :	
Speed :	100 Mbps
Operator Name:	KES



### Final Result

Frequency (MHz)	QuasiPeak (dBμV)	CAverage (dBμV)	Limit (dBμV)	Margin (dB)	Meas. Time (ms)	Bandwidth (kHz)	Line	Corr. (dB)
0.505000	---	34.87	74.00	39.13	1000.0	9.000	Single Line	19.8
0.505000	41.95	---	87.00	45.05	1000.0	9.000	Single Line	19.8
3.955000	---	41.90	74.00	32.10	1000.0	9.000	Single Line	19.7
3.955000	46.20	---	87.00	40.80	1000.0	9.000	Single Line	19.7
4.415000	---	40.24	74.00	33.76	1000.0	9.000	Single Line	19.6
4.415000	45.93	---	87.00	41.07	1000.0	9.000	Single Line	19.6
23.130000	---	56.23	74.00	17.77	1000.0	9.000	Single Line	20.1
23.130000	59.65	---	87.00	27.35	1000.0	9.000	Single Line	20.1
26.610000	---	55.70	74.00	18.30	1000.0	9.000	Single Line	20.2
26.610000	59.19	---	87.00	27.81	1000.0	9.000	Single Line	20.2

#### ◆ Calculation

$$\text{QuasiPeak [dBuV]} / \text{CAverage [dBuV]} = \text{Reading Value [dBuV]} + \text{Corr. [dB]}$$

QuasiPeak / CAverage : The Final Value

Reading Value : Not shown in the table.

Corr. : Correction values (ISN FACTOR + (Cable Loss + Pulse Limiter FACTOR))

This report shall not be reproduced except in full, without the written approval of KES Co., Ltd.

The results shown in this test report refer only to the sample(s) tested unless otherwise stated.

The authenticity of the test report, contact kes@kes.co.kr



## KES Co., Ltd.

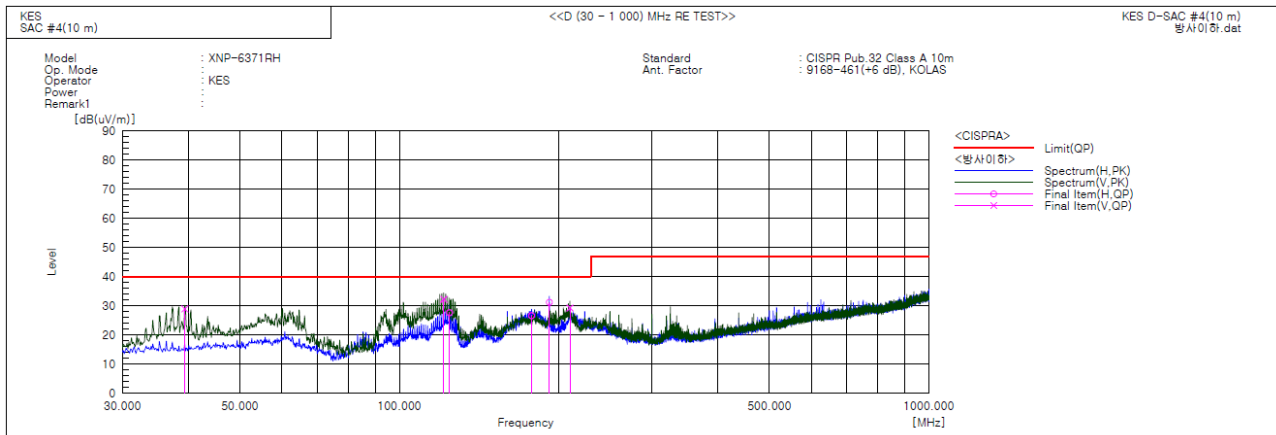
3701, 40, Simin-daero 365beon-gil,  
Dongan-gu, Anyang-si, Gyeonggi-do, 14057, Korea  
Tel: +82-31-425-6200 / Fax: +82-31-424-0450  
www.kes.co.kr

Report No.:

KES-EM-22T0918-R1

Page (38) of (62)

### Radiated Electric Field Emissions(Below 1 GHz)



#### Final Result

No.	Frequency [MHz]	(P)	Reading QP [dB(uV)]	c.f [dB(1/m)]	Result QP [dB(uV/m)]	Limit QP [dB(uV/m)]	Margin QP [dB]	Height [cm]	Angle [deg]	Remark
1	39.336	V	51.0	-22.1	28.9	40.0	11.1	109.0	299.0	
2	121.301	V	54.7	-22.5	32.2	40.0	7.8	105.0	96.0	
3	124.333	H	49.7	-22.1	27.6	40.0	12.4	398.0	53.0	
4	177.683	H	47.6	-21.0	26.6	40.0	13.4	390.0	224.0	
5	191.990	H	53.5	-22.3	31.2	40.0	8.8	362.0	153.0	
6	209.935	V	51.6	-22.3	29.3	40.0	10.7	100.0	348.0	

#### ◆ Calculation – SEMI ANECHOIC CHAMBER #4(10 m)

Result(QP) [dB(μV/m)] = (Reading(QP)[dB(μV)] + c.f[dB(1/m)])

Margin(QP)[dB] = Limit[dB(μV/m)] - Result(QP) [dB(μV/m)]

Reading(QP) : Reading value, Result(QP) : Reading value + Factor value

Limit(QP) : Limit value, c.f : (ANT Factor + Cable Loss - Preamp Factor), Margin: Margin value

This report shall not be reproduced except in full, without the written approval of KES Co., Ltd.

The results shown in this test report refer only to the sample(s) tested unless otherwise stated.

The authenticity of the test report, contact kes@kes.co.kr



## KES Co., Ltd.

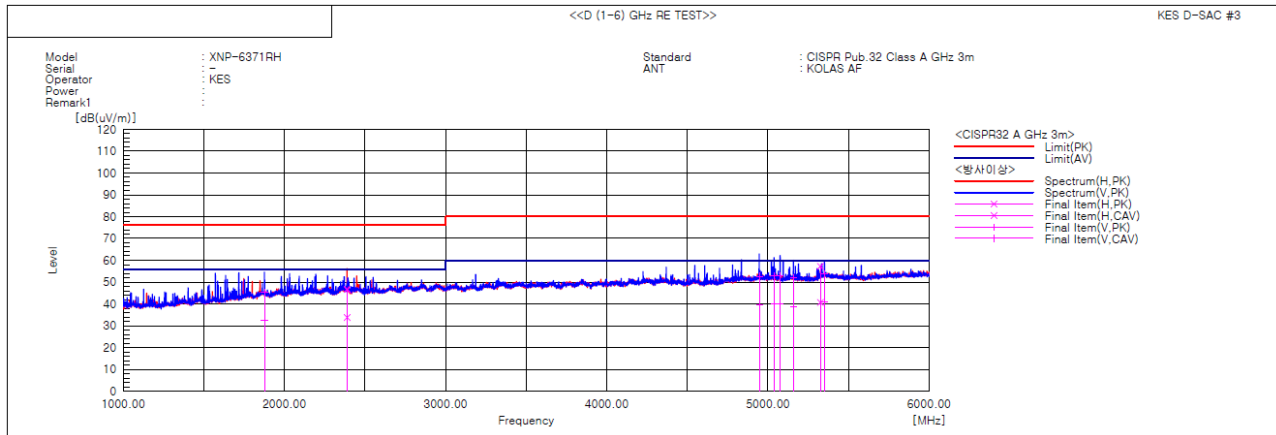
3701, 40, Simin-daero 365beon-gil,  
Dongan-gu, Anyang-si, Gyeonggi-do, 14057, Korea  
Tel: +82-31-425-6200 / Fax: +82-31-424-0450  
www.kes.co.kr

Report No.:

KES-EM-22T0918-R1

Page (39) of (62)

### Radiated Electric Field Emissions(Above 1 GHz)



No.	Frequency [MHz]	(P)	Reading PK [dB(uV)]	Reading CAV [dB(uV)]	c.f [dB(1/m)]	Result PK [dB(uV/m)]	Result CAV [dB(uV/m)]	Limit PK [dB(uV/m)]	Limit AV [dB(uV/m)]	Margin PK [dB]	Margin CAV [dB]	Height [cm]	Angle [deg]	Remark
1	1876.188	V	41.6	28.7	3.9	45.5	32.6	76.0	56.0	30.5	23.4	100.0	78.8	
2	2388.837	H	40.4	27.6	6.3	46.7	33.9	76.0	56.0	29.3	22.1	100.0	293.8	
3	4946.556	V	38.4	25.5	14.3	52.7	39.8	80.0	60.0	27.3	20.2	100.0	221.6	
4	5038.388	V	38.5	25.5	14.4	52.9	39.9	80.0	60.0	27.1	20.1	100.0	221.6	
5	5076.199	V	38.5	25.6	14.4	52.9	40.0	80.0	60.0	27.1	20.0	100.0	99.9	
6	5158.809	V	37.8	24.6	14.3	52.1	38.9	80.0	60.0	27.9	21.1	100.0	226.7	
7	5325.343	H	42.5	25.9	14.8	57.3	40.7	80.0	60.0	22.7	19.3	100.0	239.3	
8	5351.295	V	38.9	25.8	15.0	53.9	40.8	80.0	60.0	26.1	19.2	100.0	131.0	

#### ◆ Calculation

Result(PK/CAV) [dB( $\mu$ V/m)] = (Reading(PK/CAV)[dB( $\mu$ V)] + c.f[dB(1/m)])

Margin(PK/CAV)[dB] = Limit[dB( $\mu$ V/m)] - Result(PK/CAV) [dB( $\mu$ V/m)]

Reading(PK/CAV) : Reading value, Result(PK/CAV) : Reading value + Factor value

Limit(QP) : Limit value, c.f : (ANT Factor + Cable Loss - Preamp Factor), Margin: Margin value

This report shall not be reproduced except in full, without the written approval of KES Co., Ltd.

The results shown in this test report refer only to the sample(s) tested unless otherwise stated.

The authenticity of the test report, contact kes@kes.co.kr

**KES Co., Ltd.**

3701, 40, Simin-daero 365beon-gil,  
Dongan-gu, Anyang-si, Gyeonggi-do, 14057, Korea  
Tel: +82-31-425-6200 / Fax: +82-31-424-0450  
www.kes.co.kr

Report No.:

KES-EM-22T0918-R1

Page (40) of (62)

**Harmonic Current Emissions and Voltage Fluctuations and Flicker****Average harmonic current results**

Hn	I <sub>eff</sub> [A]	% of Limit	Limit [A]	Result
1	0.127			
2	0.001	0.136	1.080	n/a
3	0.044	1.916	2.300	PASS
4	0.001	0.197	0.430	n/a
5	0.049	4.295	1.140	PASS
6	0.001	0.222	0.300	n/a
7	0.026	3.346	0.770	PASS
8	0.001	0.311	0.230	n/a
9	0.014	3.550	0.400	PASS
10	0.001	0.390	0.184	n/a
11	0.005	1.599	0.330	PASS
12	0.001	0.399	0.153	n/a
13	0.005	2.355	0.210	n/a
14	0.001	0.546	0.131	n/a
15	0.005	3.093	0.150	n/a
16	0.001	0.610	0.115	n/a
17	0.004	2.696	0.132	n/a
18	0.001	0.670	0.102	n/a
19	0.002	2.020	0.118	n/a
20	0.001	0.627	0.092	n/a
21	0.002	1.155	0.161	n/a
22	0.001	0.704	0.084	n/a
23	0.002	1.393	0.147	n/a
24	0.001	1.021	0.077	n/a
25	0.002	1.164	0.135	n/a
26	0.001	0.918	0.071	n/a
27	0.001	1.100	0.125	n/a
28	0.001	1.071	0.066	n/a
29	0.002	1.344	0.116	n/a
30	0.001	1.084	0.061	n/a
31	0.001	0.991	0.109	n/a
32	0.001	1.253	0.058	n/a
33	0.001	1.466	0.102	n/a
34	0.001	1.455	0.054	n/a
35	0.001	0.872	0.096	n/a
36	0.001	1.289	0.051	n/a
37	0.001	1.218	0.091	n/a
38	0.001	1.239	0.048	n/a
39	0.001	1.079	0.087	n/a
40	0.001	1.281	0.046	n/a

Note: Harmonic currents less than 0.6 % of the input current measured under the test conditions, or less than 5 mA, whichever is greater, are disregarded.

\* Application of limits for average is 100% except for odd harmonics from 21 to 39, where 150% applies.

This report shall not be reproduced except in full, without the written approval of KES Co., Ltd.

The results shown in this test report refer only to the sample(s) tested unless otherwise stated.

The authenticity of the test report, contact kes@kes.co.kr





Test Data - Harmonics (continued)

**Maximum harmonic current results**

Hn	I <sub>eff</sub> [A]	% of Limit	Limit [A]	Result
1	0.127			
2	0.002	0.096	1.620	n/a
3	0.044	1.280	3.450	PASS
4	0.001	0.158	0.645	n/a
5	0.049	2.870	1.710	PASS
6	0.001	0.166	0.450	n/a
7	0.026	2.240	1.155	PASS
8	0.001	0.260	0.345	n/a
9	0.014	2.385	0.600	PASS
10	0.001	0.283	0.276	n/a
11	0.005	1.087	0.495	PASS
12	0.001	0.292	0.230	n/a
13	0.005	1.608	0.315	PASS
14	0.001	0.404	0.197	n/a
15	0.005	2.098	0.225	n/a
16	0.001	0.484	0.173	n/a
17	0.004	1.885	0.199	n/a
18	0.001	0.505	0.153	n/a
19	0.002	1.396	0.178	n/a
20	0.001	0.462	0.138	n/a
21	0.002	1.210	0.161	n/a
22	0.001	0.522	0.125	n/a
23	0.002	1.471	0.147	n/a
24	0.001	0.754	0.115	n/a
25	0.002	1.234	0.135	n/a
26	0.001	0.753	0.106	n/a
27	0.001	1.148	0.125	n/a
28	0.001	0.814	0.099	n/a
29	0.002	1.423	0.116	n/a
30	0.001	0.795	0.092	n/a
31	0.001	1.080	0.109	n/a
32	0.001	1.018	0.086	n/a
33	0.002	1.559	0.102	n/a
34	0.001	1.071	0.081	n/a
35	0.001	0.949	0.096	n/a
36	0.001	1.171	0.077	n/a
37	0.001	1.314	0.091	n/a
38	0.001	0.935	0.073	n/a
39	0.001	1.195	0.087	n/a
40	0.001	1.027	0.069	n/a

Note: Harmonic currents less than 0.6 % of the input current measured under the test conditions, or less than 5 mA, whichever is greater, are disregarded.

\* Application of limits for average is 100% except for odd harmonics from 21 to 39, where 150% applies.

**KES Co., Ltd.**

3701, 40, Simin-daero 365beon-gil,  
Dongan-gu, Anyang-si, Gyeonggi-do, 14057, Korea  
Tel: +82-31-425-6200 / Fax: +82-31-424-0450  
www.kes.co.kr

Report No.:

KES-EM-22T0918-R1

Page (42) of (62)

Test Data - Voltage Fluctuations

**Maximum Flicker results**

Flicker Measurements					
	Plt	Max Pst	Max Dc	Max Dmax	Max Tmax
Line 1:	0.028	0.028	0	< 0.2	0
Limits:	0.65	1	3.3	4	0.5
Results:	PASS	PASS	PASS	PASS	PASS

This report shall not be reproduced except in full, without the written approval of KES Co., Ltd.  
The results shown in this test report refer only to the sample(s) tested unless otherwise stated.  
The authenticity of the test report, contact kes@kes.co.kr

## Test Setup Photos and Configuration

### Conducted Emissions at Mains Power Ports



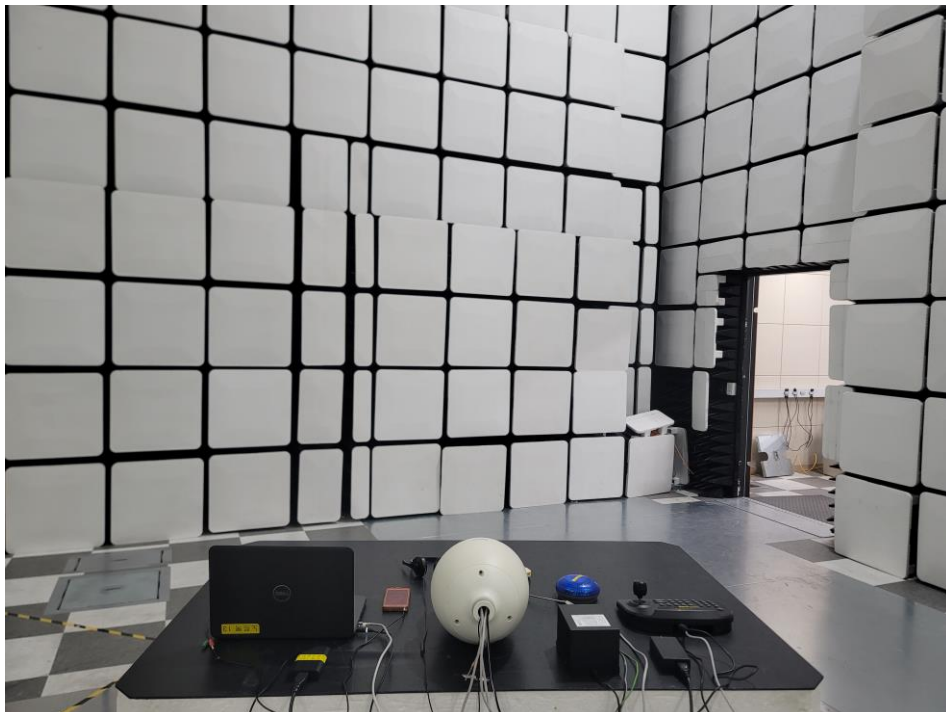
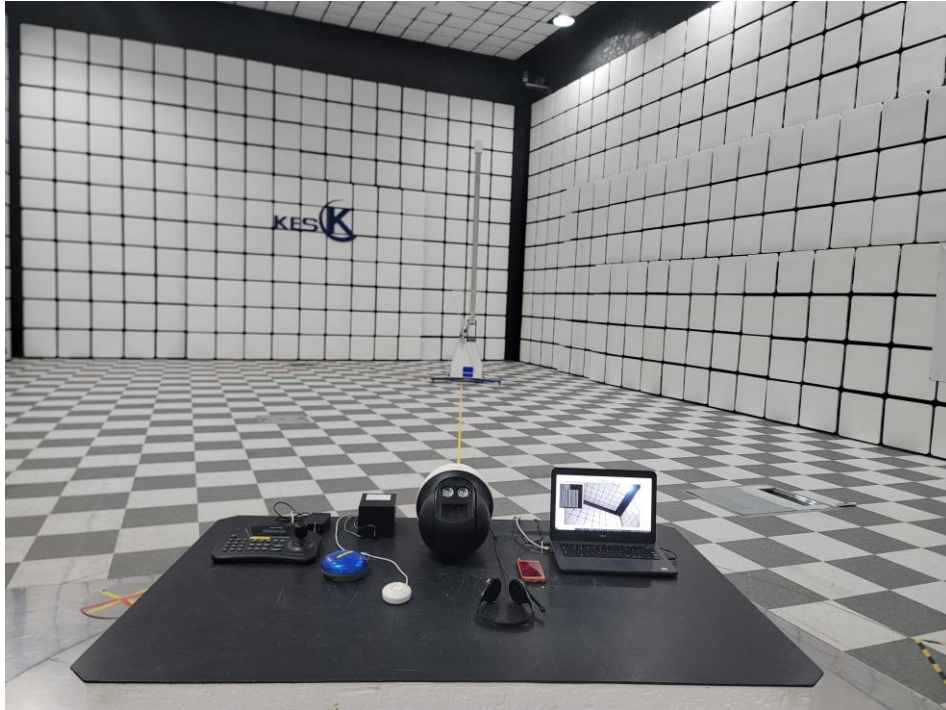
This report shall not be reproduced except in full, without the written approval of KES Co., Ltd.  
The results shown in this test report refer only to the sample(s) tested unless otherwise stated.  
The authenticity of the test report, contact kes@kes.co.kr

## Conducted Emissions at Telecommunication Ports



This report shall not be reproduced except in full, without the written approval of KES Co., Ltd.  
The results shown in this test report refer only to the sample(s) tested unless otherwise stated.  
The authenticity of the test report, contact kes@kes.co.kr

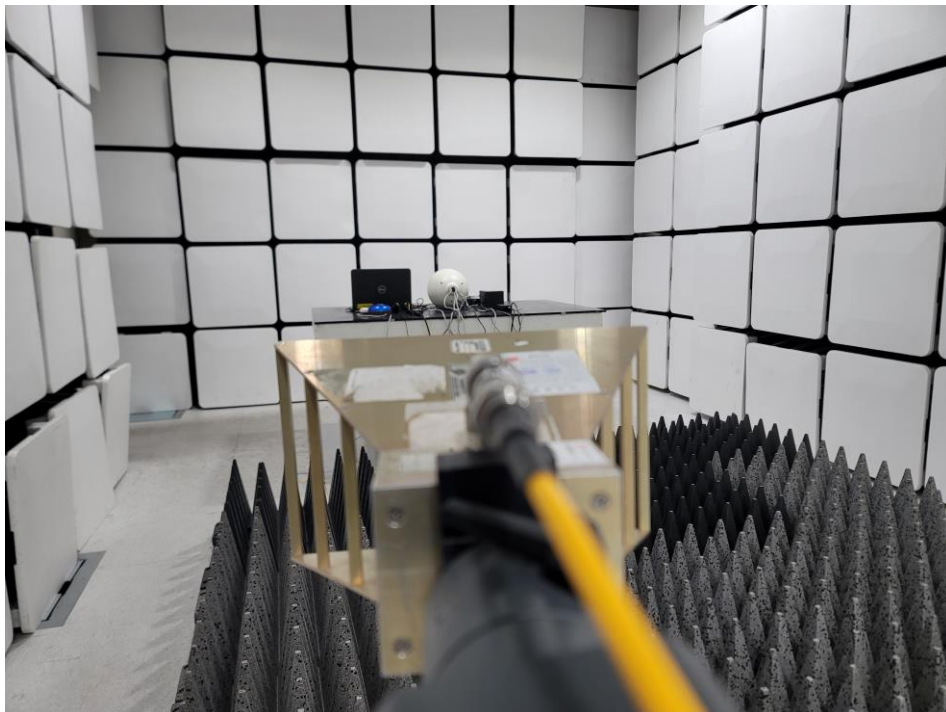
## Radiated Electric Field Emissions(Below 1 GHz)



This report shall not be reproduced except in full, without the written approval of KES Co., Ltd.  
The results shown in this test report refer only to the sample(s) tested unless otherwise stated.  
The authenticity of the test report, contact kes@kes.co.kr



## Radiated Electric Field Emissions(Above 1 GHz)



This report shall not be reproduced except in full, without the written approval of KES Co., Ltd.  
The results shown in this test report refer only to the sample(s) tested unless otherwise stated.  
The authenticity of the test report, contact kes@kes.co.kr

---

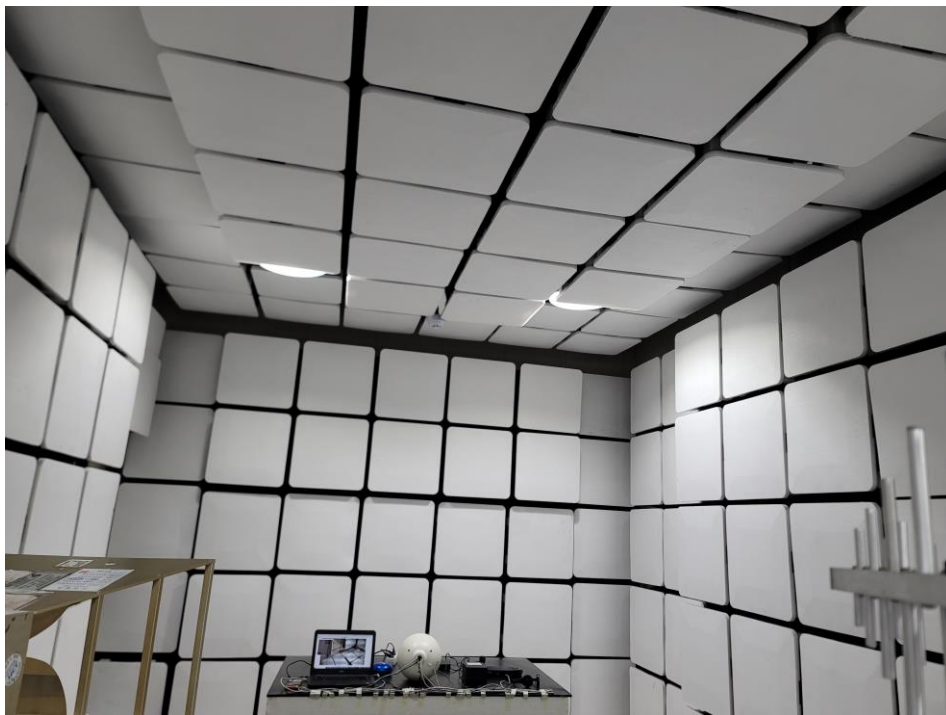
## Harmonic Current Emissions and Voltage Fluctuations and Flicker



## Electrostatic Discharge



## Radiated Electric Field Immunity



This report shall not be reproduced except in full, without the written approval of KES Co., Ltd.  
The results shown in this test report refer only to the sample(s) tested unless otherwise stated.  
The authenticity of the test report, contact kes@kes.co.kr



## Electrical Fast Transients/Bursts



## Surge Transients



This report shall not be reproduced except in full, without the written approval of KES Co., Ltd.  
The results shown in this test report refer only to the sample(s) tested unless otherwise stated.  
The authenticity of the test report, contact kes@kes.co.kr

## Conducted Disturbance



## Voltage Dips and Short Interruptions



This report shall not be reproduced except in full, without the written approval of KES Co., Ltd.  
The results shown in this test report refer only to the sample(s) tested unless otherwise stated.  
The authenticity of the test report, contact kes@kes.co.kr

## EUT External Photographs

(Top)



(Bottom)



This report shall not be reproduced except in full, without the written approval of KES Co., Ltd.  
The results shown in this test report refer only to the sample(s) tested unless otherwise stated.  
The authenticity of the test report, contact kes@kes.co.kr



## EUT Internal Photographs

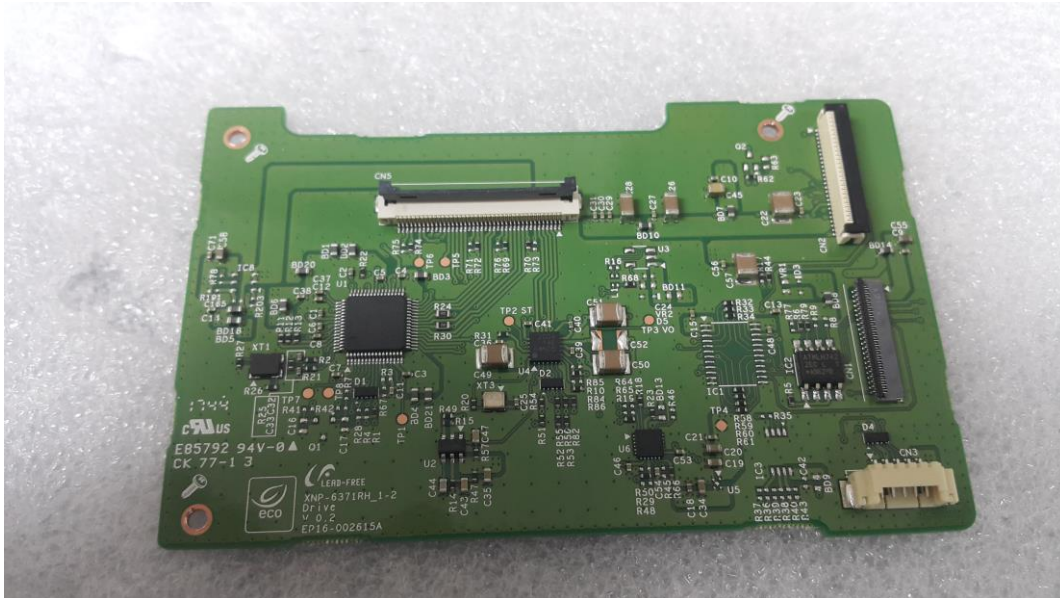
(Internal View)



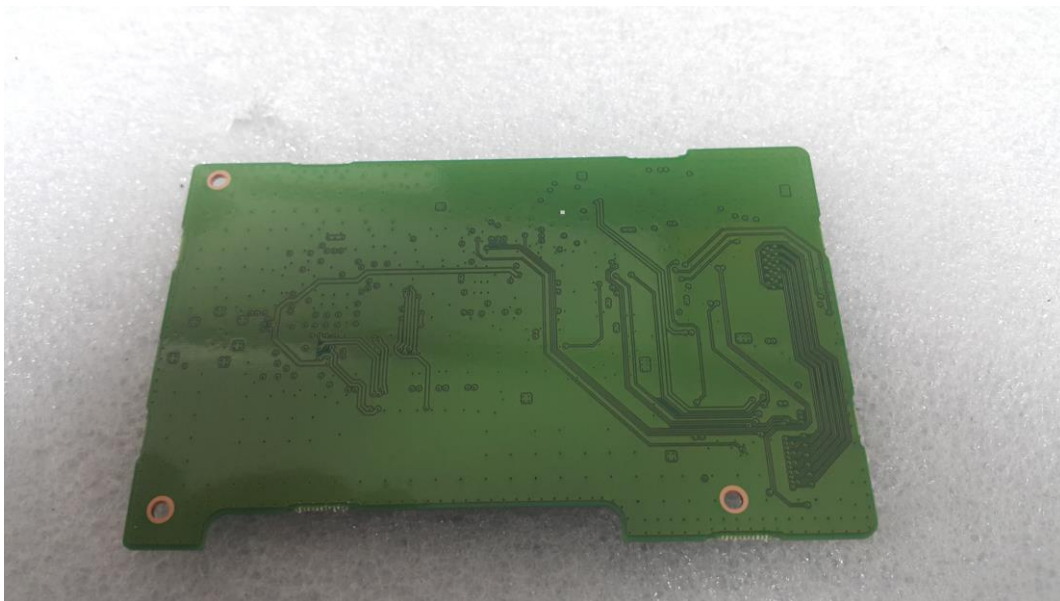
This report shall not be reproduced except in full, without the written approval of KES Co., Ltd.  
The results shown in this test report refer only to the sample(s) tested unless otherwise stated.  
The authenticity of the test report, contact kes@kes.co.kr

## EUT Internal View – Main Board

(Top)

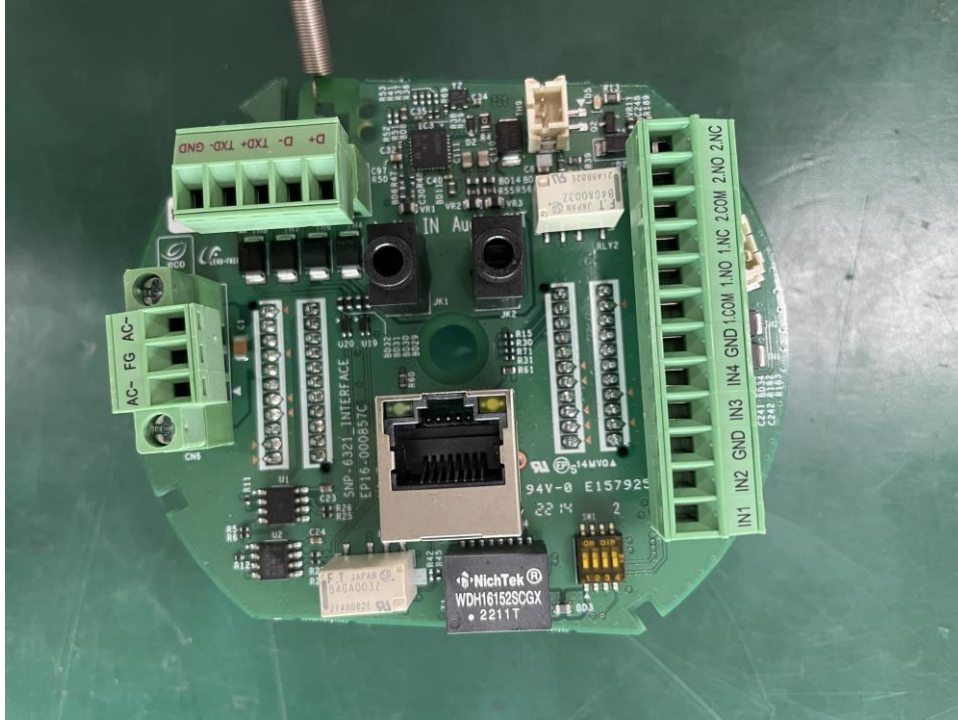


(Bottom)

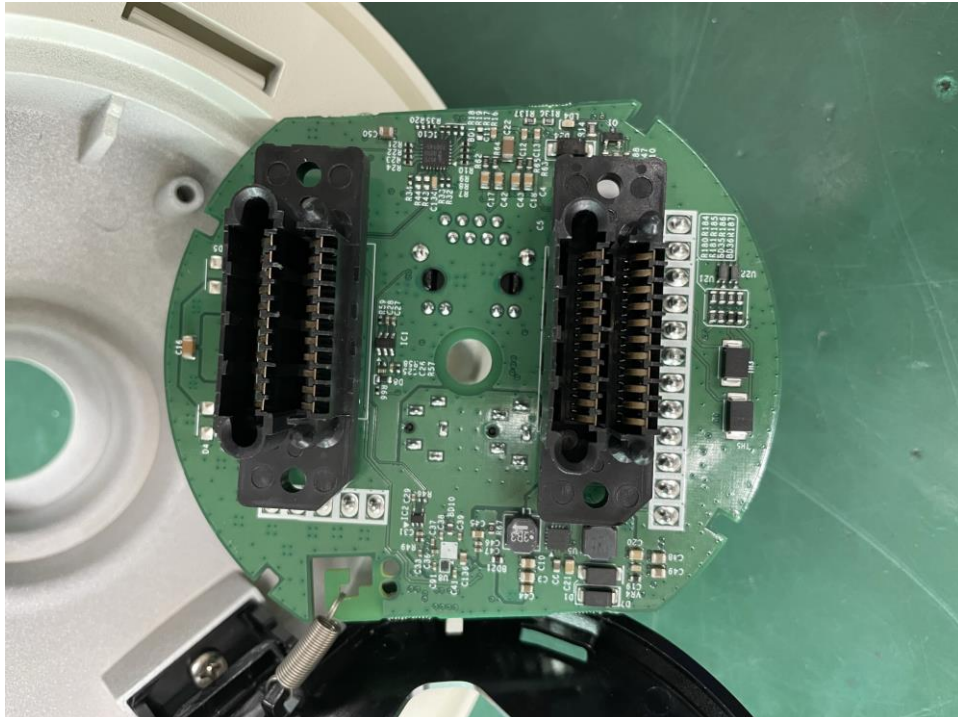


## EUT Internal View – IO Board

(Top)



(Bottom)

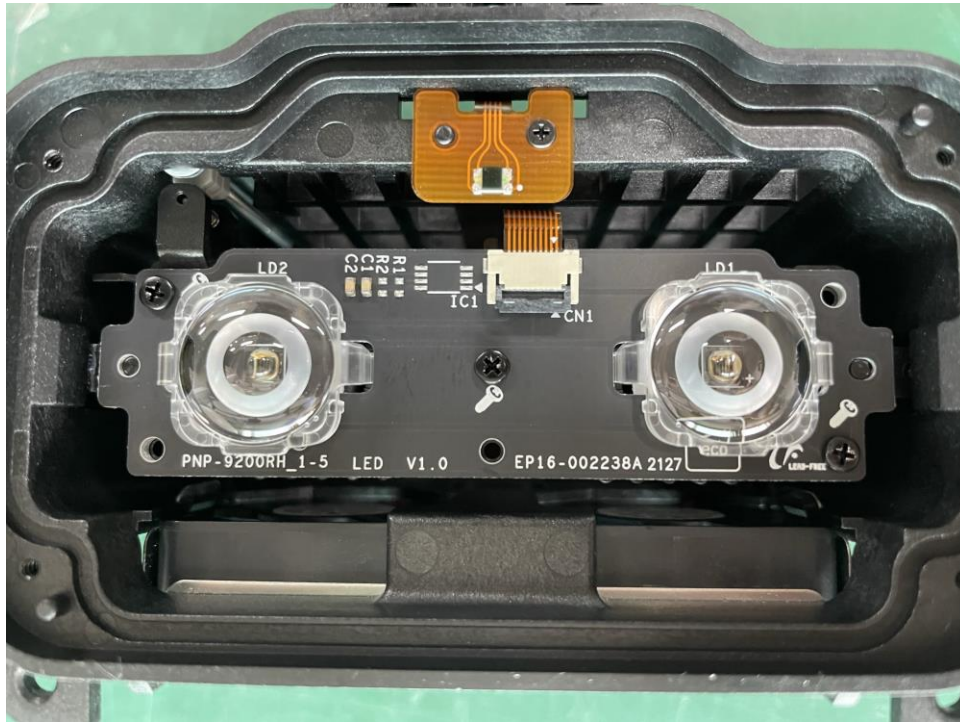


This report shall not be reproduced except in full, without the written approval of KES Co., Ltd.  
The results shown in this test report refer only to the sample(s) tested unless otherwise stated.  
The authenticity of the test report, contact kes@kes.co.kr



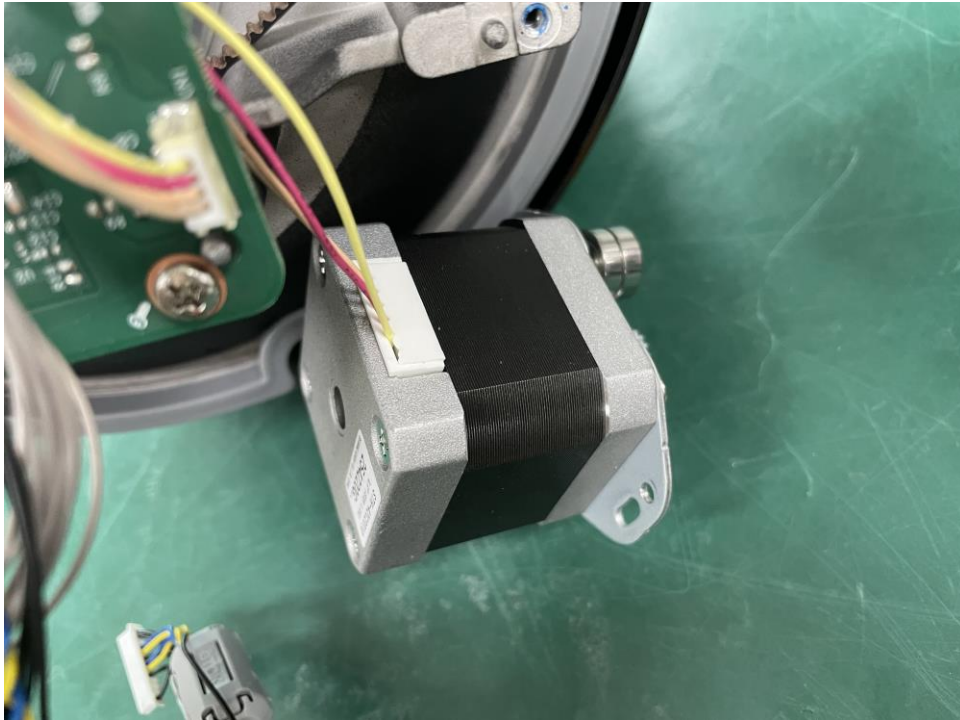
## EUT Internal View – IR Board

(Top)



## EUT Internal View – Motor

(Top)



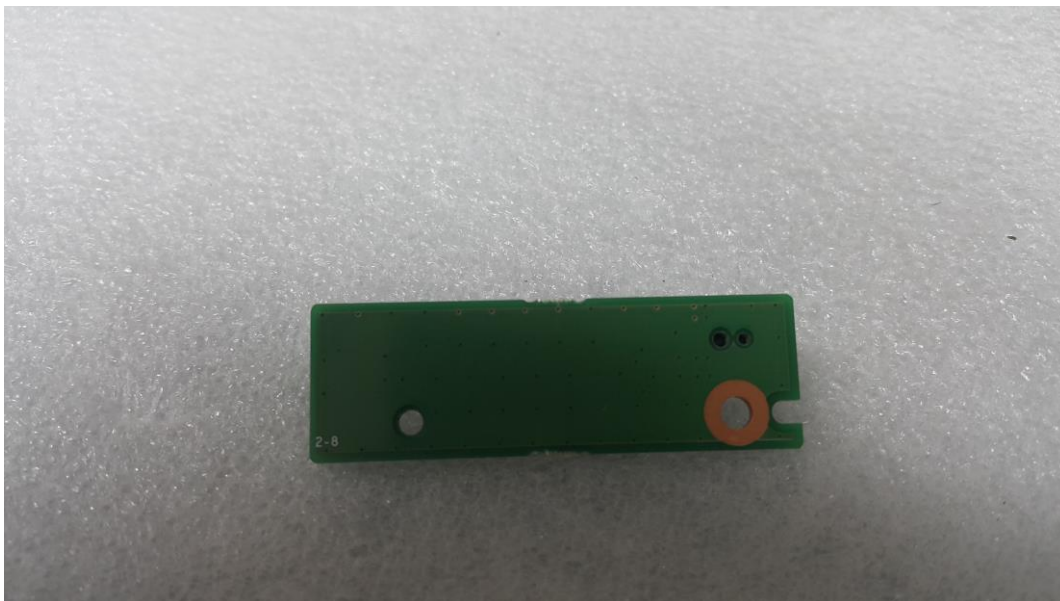
This report shall not be reproduced except in full, without the written approval of KES Co., Ltd.  
The results shown in this test report refer only to the sample(s) tested unless otherwise stated.  
The authenticity of the test report, contact kes@kes.co.kr

## EUT Internal View – SUB Board 1

(Top)



(Bottom)



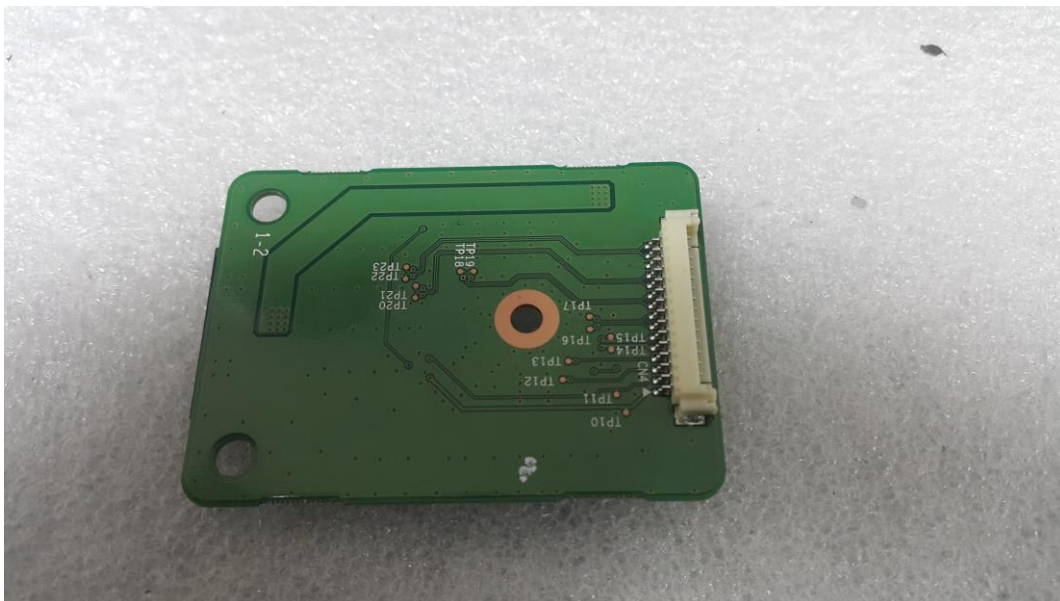


## EUT Internal View – SUB Board 2

(Top)

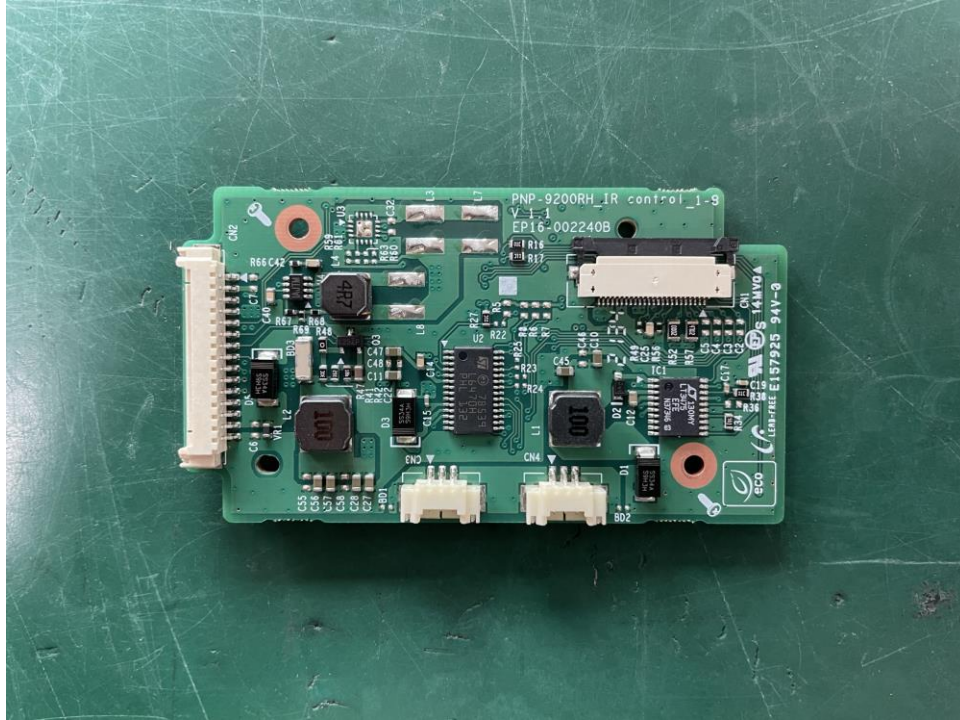


(Bottom)

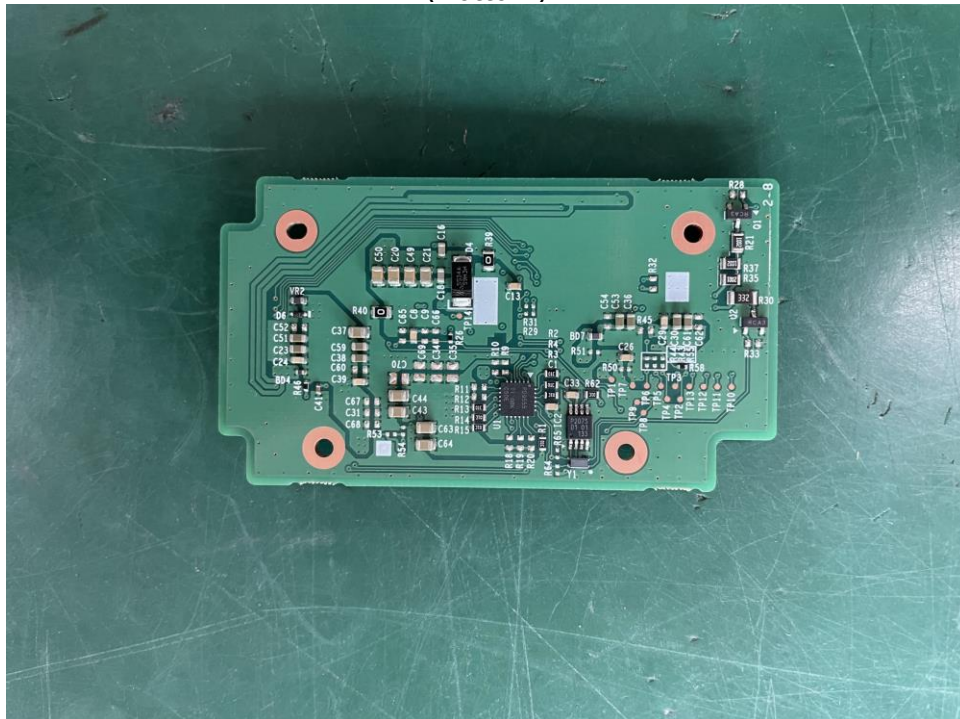


## EUT Internal View – SUB Board 3

(Top)



(Bottom)

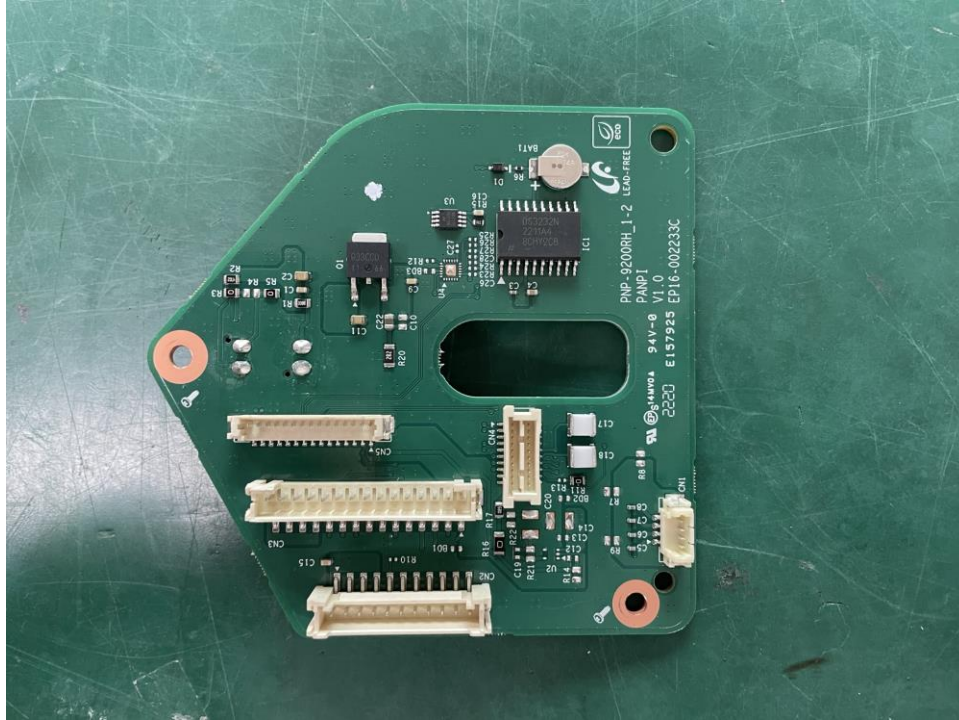


This report shall not be reproduced except in full, without the written approval of KES Co., Ltd.  
 The results shown in this test report refer only to the sample(s) tested unless otherwise stated.  
 The authenticity of the test report, contact kes@kes.co.kr

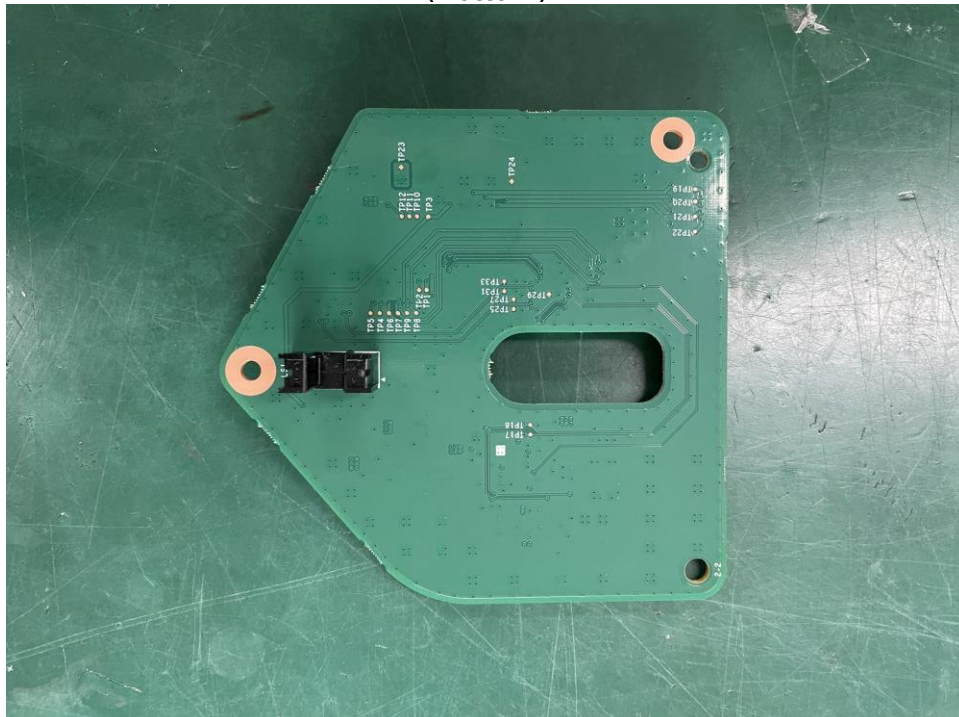


## EUT Internal View – SUB Board 4

(Top)



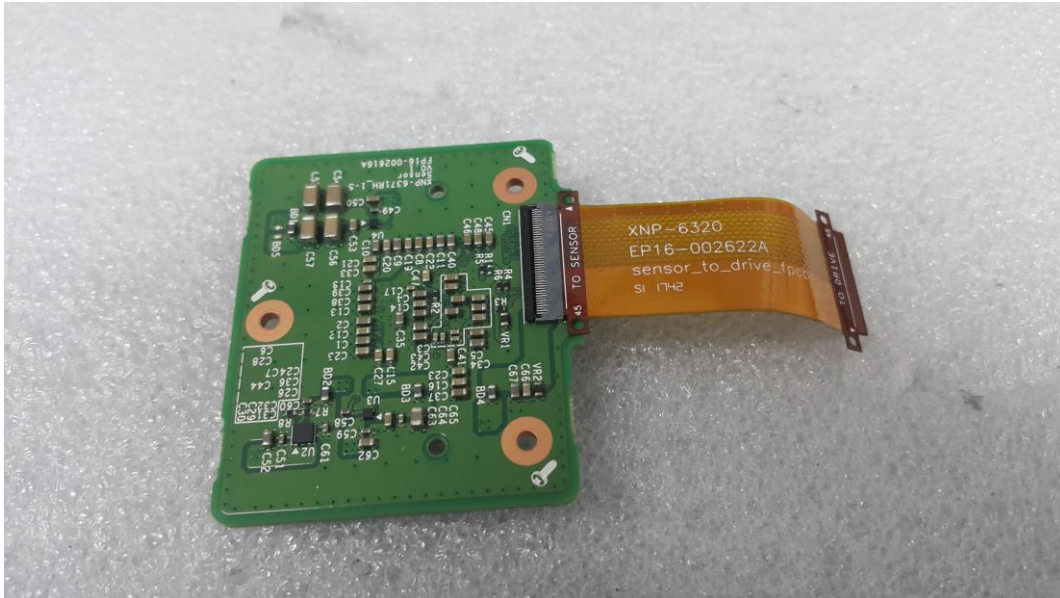
(Bottom)



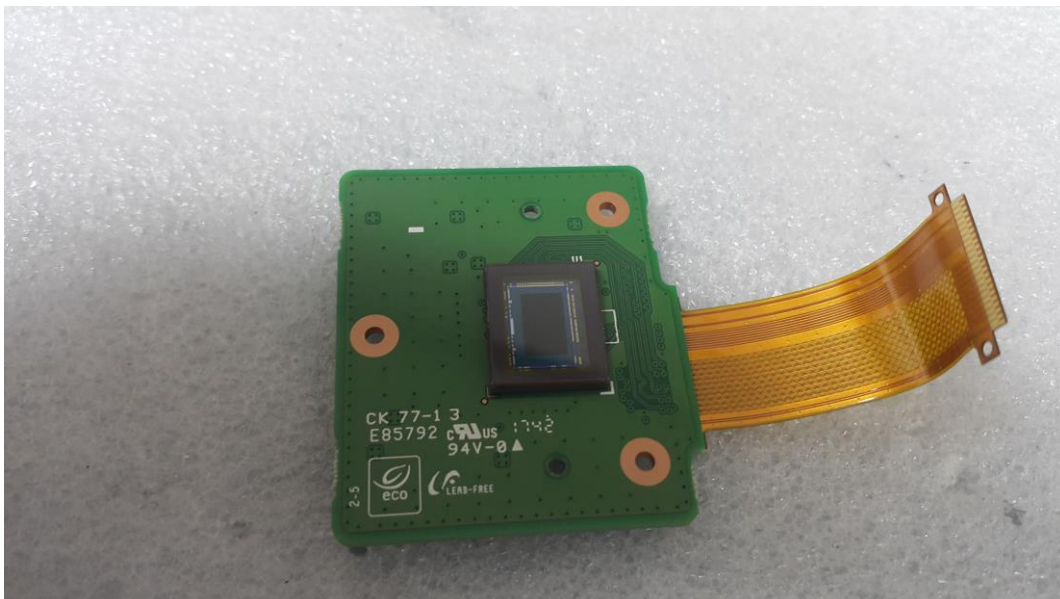
This report shall not be reproduced except in full, without the written approval of KES Co., Ltd.  
The results shown in this test report refer only to the sample(s) tested unless otherwise stated.  
The authenticity of the test report, contact kes@kes.co.kr

## EUT Internal View – Sensor Board

(Top)



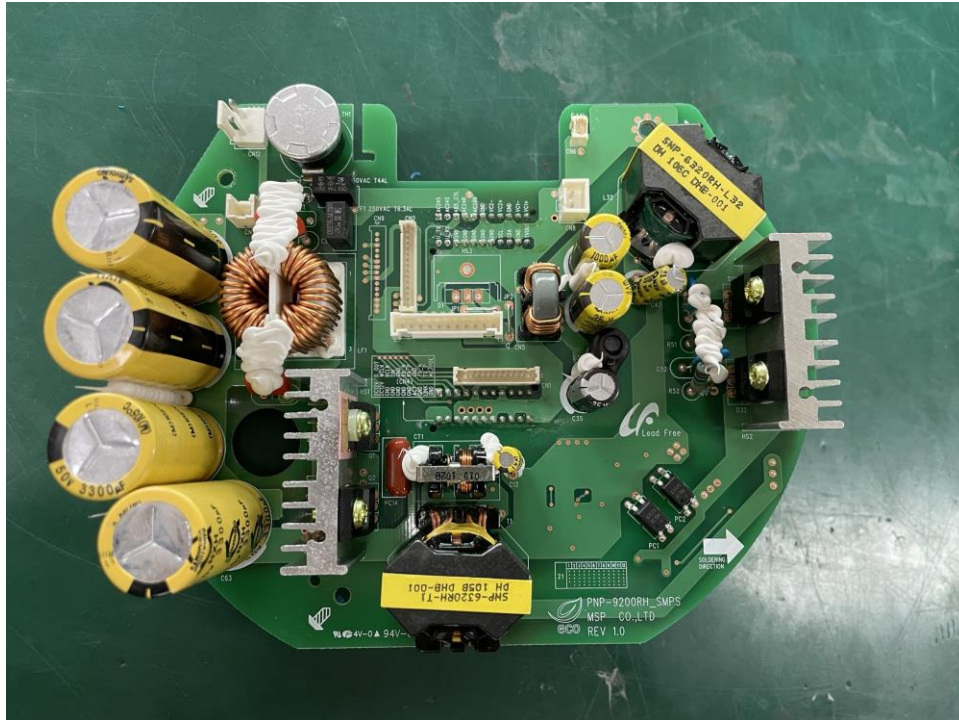
(Bottom)



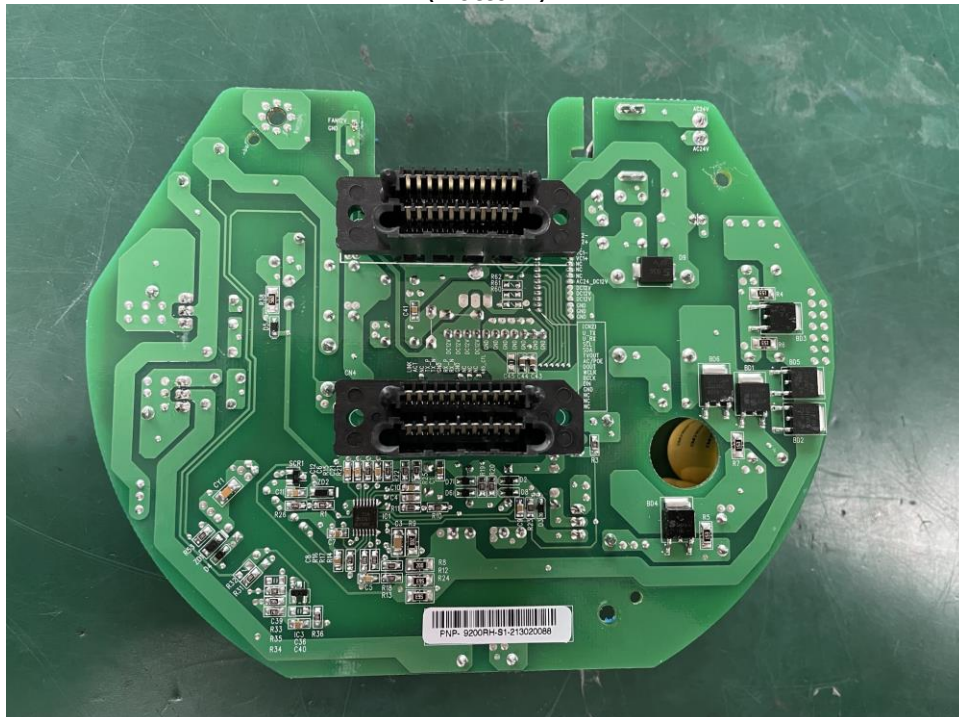


## EUT Internal View – Power Board

(Top)



(Bottom)



This report shall not be reproduced except in full, without the written approval of KES Co., Ltd.  
 The results shown in this test report refer only to the sample(s) tested unless otherwise stated.  
 The authenticity of the test report, contact kes@kes.co.kr

## Label and Location

**Network Camera**

Model No : XNP-6371RH

Manufacturer : HANWHA VISION VIETNAM COMPANY LIMITED

Made in Vietnam

