

**KES Co., Ltd.**

3701, 40, Simin-daero 365beon-gil,
Dongan-gu, Anyang-si, Gyeonggi-do, 14057, Korea
Tel: +82-31-425-6200 / Fax: +82-31-424-0450
www.kes.co.kr

Report No.:

KES-EM-21T0651-R1

Page (1) of (35)

EMC TEST REPORT

Test Report No. : KES-EM-21T0651-R1

Date of Issue : Feb. 24, 2023

Product name : NETWORK CAMERA

Model/Type No. : QNP-6320R

Variant Model : -

Applicant : Hanwha Vision Co., Ltd

Applicant Address : 6, Pangyo-ro 319Beon-gil, Bundang-gu, Seongnam-si,
Gyeonggi-do, Republic of Korea

Manufacturer : 1. HANWHA VISION VIETNAM COMPANY LIMITED
2. D-TECH CO.,LTD.

Manufacturer Address : 1. Lot O-2, Que Vo Industrial Zone extended area,
Nam Son commune, Bac Ninh city, Bac Ninh province, Vietnam
2. 173-25, Saneop-ro, Gwonseon-gu, Suwon-si, Gyeonggi- do,
Korea (Suwon Industrial Complex)

Equipment authorization : **Supplier's Declaration of Conformity**

Date of Receipt : Jun. 16, 2021

Test date : Jul. 03, 2021

Test Results : ☒ **In Compliance** ☐ **Not in Compliance**

Tested by

Kang Hyeon, Kim
EMC Test Engineer

Reviewed by

Dong-Hun, Jang
EMC Technical Manager

This test report is not related to KS Q ISO/IEC 17025 and KOLAS.

This report shall not be reproduced except in full, without the written approval of KES Co., Ltd.
The results shown in this test report refer only to the sample(s) tested unless otherwise stated.
The authenticity of the test report, contact kes@kes.co.kr

**KES Co., Ltd.**

3701, 40, Simin-daero 365beon-gil,
Dongan-gu, Anyang-si, Gyeonggi-do, 14057, Korea
Tel: +82-31-425-6200 / Fax: +82-31-424-0450
www.kes.co.kr

Report No.:

KES-EM-21T0651-R1

Page (2) of (35)

REPORT REVISION HISTORY

Date	Test Report No.	Revision History
Jul. 26, 2021	KES-EM-21T0651	Issued
Feb. 24, 2023	KES-EM-21T0651-R1	Change the Applicant and manufacturer at the request of the customer

This report shall not be reproduced except in full, without the written approval of KES Co., Ltd. This document may be altered or revised by KES Co., Ltd. personnel only, and shall be noted in the revision section of the document. Any alteration of this document not carried out by KES Co., Ltd. will constitute fraud and shall nullify the document.

This report shall not be reproduced except in full, without the written approval of KES Co., Ltd.
The results shown in this test report refer only to the sample(s) tested unless otherwise stated.
The authenticity of the test report, contact kes@kes.co.kr



TABLE OF CONTENTS

1.0	General Product Description.....	4
1.1	Test Voltage & Frequency	8
1.2	Variant Model Differences	8
1.3	Device Modifications	8
1.4	Equipment Under Test.....	8
1.5	Support Equipments	8
1.6	External I/O Cabling	9
1.7	EUT Operating Mode(s)	9
1.8	Configuration.....	10
1.9	Remarks when standards applied	11
1.10	Calibration Details of Equipment Used for Measurement	11
1.11	Test Facility	11
1.12	Laboratory Accreditations and Listings	11
2.0	Test Regulations.....	12
2.1	Conducted Emissions at Mains Power Ports	14
2.2	Radiated Electric Field Emissions(Below 1 GHz)	15
2.3	Radiated Electric Field Emissions(Above 1 GHz)	16
APPENDIX A – TEST DATA.....		17
Conducted Emissions at Mains Power Ports.....		17
Radiated Electric Field Emissions(Below 1 GHz)		19
Radiated Electric Field Emissions(Above 1 GHz)		21
Test Setup Photos and Configuration		22
Conducted Emissions at Mains Power Ports.....		22
Radiated Electric Field Emissions(Below 1 GHz)		23
Radiated Electric Field Emissions(Above 1 GHz)		24
EUT External Photographs		25
EUT Internal Photographs		26



1.0 General Product Description

Main Specifications of EUT are:

Video	
Imaging Device	1/2.8" CMOS
Resolution	1920x1080, 1280x1024, 1280x960, 1280x720, 1024x768, 800x600, 800x448, 720x576, 720x480, 640x480, 640x360, 320x240
Max. Framerate	H.265/H.264: Max. 60fps/50fps(60Hz/50Hz) MJPEG: Max. 30fps/25fps(60Hz/50Hz)
NETD	None
Pixel Size	None
Min. Illumination	Color: 0.05Lux(F1.6, 1/30sec) BW: 0Lux(IR LED On)
Video Out	None
Video Transmission Distance	None
Lens	
Focal Length (Zoom Ratio)	4.44~142.6mm(32x) zoom
Max. Aperture Ratio	F1.6(Wide)~F4.4(Tele)
Angular Field of View	H: 64.66°(Wide)~2.29°(Tele) / V: 38.08°(Wide)~1.30°(Tele)
Min. Object Distance	Wide: 1.5m(4.92ft), Tele: 2m(6.56ft)
Focus Control	Oneshot AF, Focus save
Lens Type	DC auto iris
Mount Type	None
Optional Lens	None
Pan / Tilt / Rotate	
Pan / Tilt / Rotate Range	None
Pan Range	360° Endless
Pan Speed	Preset: 700°/sec, Manual: 0.024°/sec~250°/sec
Tilt Range	110°(-20°~90°)
Tilt Speed	Preset: 300°/sec, Manual: 0.024°/sec~250°/sec
Rotate Range	None
Sequence	Preset(300ea), Swing, Group(6ea), Trace, Tour, Auto Run, Schedule

This report shall not be reproduced except in full, without the written approval of KES Co., Ltd.
The results shown in this test report refer only to the sample(s) tested unless otherwise stated.
The authenticity of the test report, contact kes@kes.co.kr

**KES Co., Ltd.**

3701, 40, Simin-daero 365beon-gil,
Dongan-gu, Anyang-si, Gyeonggi-do, 14057, Korea
Tel: +82-31-425-6200 / Fax: +82-31-424-0450
www.kes.co.kr

Report No.:

KES-EM-21T0651-R1

Page (5) of (35)

Preset Accuracy	$\pm 0.2^{\circ}$ ($\pm 20^{\circ}\text{C}$ by temperature at preset setting)
Operational	
Camera Title	Displayed up to 85 characters
Direction Indicator	Support
Day & Night	Auto(ICR)
Backlight Compensation	BLC, HLC, WDR, SDDR
Wide Dynamic Range	120dB
Digital Noise Reduction	SSNR V
Digital Image Stabilization	Support(built-in gyro sensor)
Defog	Support
Motion Detection	8ea, 8point polygonal zones
Privacy Masking	32ea, Quadrangle Support - Color: Grey/Green/Red/Blue/Black/White - Solid/Mosaic
Gain Control	Low / Middle / High
White Balance	ATW / AWC / Manual / Indoor / Outdoor / Mercury / Sodium
LDC	None
Electronic Shutter Speed	Minimum / Maximum / Anti flicker (2~1/12,000sec)
Digital PTZ	None
Video Rotation	Flip, Mirror
Analytics	Directional detection, Motion detection, Enter/Exit, Tampering, Virtual line * Audio detection(with NW I/O Box)
Alarm Triggers	Analytics, Network disconnect * Alarm input(with NW I/O Box)
Alarm Events	File upload via FTP and e-mail Notification via e-mail SD/SDHC/SDXC or NAS recording at event triggers PTZ Preset Handover * Alarm output(with NW I/O Box)
Audio In	None
Audio Out	None
IR Viewable Length	100m(328.08ft)

This report shall not be reproduced except in full, without the written approval of KES Co., Ltd.
The results shown in this test report refer only to the sample(s) tested unless otherwise stated.
The authenticity of the test report, contact kes@kes.co.kr

**KES Co., Ltd.**

3701, 40, Simin-daero 365beon-gil,
Dongan-gu, Anyang-si, Gyeonggi-do, 14057, Korea
Tel: +82-31-425-6200 / Fax: +82-31-424-0450
www.kes.co.kr

Report No.:

KES-EM-21T0651-R1

Page (6) of (35)

Radiometry	
Temperature detect range	None
Temperature accuracy	None
Temperature detection	None
Additional	None
Network	
Ethernet	Metal shielded RJ-45(10/100BASE-T)
Video Compression	H.265/H.264,MJPEG
Audio Compression	None
Smart Codec	Manual(5ea area), WiseStream II
Video Quality Adjustment	H.264/H.265: Target bitrate level control MJPEG: Target bitrate level control
Bitrate Control	H.264/H.265: CBR or VBR MJPEG: VBR
Streaming	Unicast(20 users) / Multicast (128 user) Multiple streaming(Up to 10 profiles)
Protocol	IPv4, IPv6, TCP/IP, UDP/IP, RTP(UDP), RTP(TCP), RTCP, RTSP, NTP, HTTP, HTTPS, SSL/TLS, DHCP, FTP, SMTP, ICMP, IGMP, SNMPv1/v2c/v3(MIB-2), ARP, DNS, DDNS, QoS, PIM-SM, UPnP, Bonjour, LLDP, SRTP
Security	HTTPS(SSL) Login Authentication Digest Login Authentication IP Address Filtering User access log 802.1X Authentication(EAP-TLS, EAP-LEAP)
Application Programming Interface	ONVIF Profile S/G/T SUNAPI(HTTP API) Wisenet open platform
General	
Webpage Language	English, Korean, Chinese, French, Italian, Spanish, German, Japanese, Russian, Swedish,, Portuguese, Czech, Polish, Turkish, Dutch, Hungarian, Greek
Web Viewer	None
Edge Storage	Micro SD/SDHC/SDXC 1slot 256GB

This report shall not be reproduced except in full, without the written approval of KES Co., Ltd.
The results shown in this test report refer only to the sample(s) tested unless otherwise stated.
The authenticity of the test report, contact kes@kes.co.kr

**KES Co., Ltd.**

3701, 40, Simin-daero 365beon-gil,
Dongan-gu, Anyang-si, Gyeonggi-do, 14057, Korea
Tel: +82-31-425-6200 / Fax: +82-31-424-0450
www.kes.co.kr

Report No.:

KES-EM-21T0651-R1

Page (7) of (35)

Memory	1024MB RAM, 256MB Flash
Environmental & Electrical	
Operating Temperature / Humidity	Normal : -35°C~+55°(-31°F ~ +131°F) / Intermittent : -40°C~+60°C(-40°F ~ +140°F) * Start up should be done at above -30°C Less than 95% RH(Non-condensing)
Storage Temperature / Humidity	-50°C~+60°C (-58°F~+140°F) / Less than 95% RH(Non-condensing)
Certification	IP66, IK10, NEMA4X
Input Voltage	PoE+(IEEE802.3at, Class4)
Power Consumption	Typ.14.7W, Max.25.5W Camera only
Mechanical	
Color / Material	Body : White / Aluminum Head : Black / Polycarbonate Hard-coated dome
RAL Code	RAL9003
Product dimensions / weight	Ø158x293.3mm / 3.04Kg
Conduit hole	None
Hanging mount(Dome)	None
Skin cover(Dome)	None
Weather cap(Dome)	None
Power module	None
Backbox	None
DORI (EN62676-4 standard)	
Detect (25PPM/ 8PPF)	Wide: 64.2m(199.1ft) / Tele: 1921.3m(6303.4ft)
Observe (63PPM/ 19PPF)	Wide: 24.3m(79.6ft) / Tele: 768.5m(2521.4ft)
Recognize (125PPM/ 38PPF)	Wide: 12.1m(39.8ft) / Tele: 384.3m(1260.7ft)
Identify (250PPM/ 76PPF)	Wide: 6.1m(19.9ft) / Tele: 192.1m(630.3ft)

This report shall not be reproduced except in full, without the written approval of KES Co., Ltd.
The results shown in this test report refer only to the sample(s) tested unless otherwise stated.
The authenticity of the test report, contact kes@kes.co.kr



1.1 Test Voltage & Frequency

Unless indicated otherwise on the individual data sheet or test results, the test voltage and frequency was as indicated below.

☒ PoE

1.2 Variant Model Differences

Not applicable

1.3 Device Modifications

Not applicable

1.4 Equipment Under Test

Description	Model Number	Serial Number	Manufacturer	Remarks
NETWORK CAMERA	QNP-6320R	-	HANWHA VISION VIETNAM COMPANY LIMITED	EUT

1.5 Support Equipments

Description	Model Number	Serial Number	Manufacturer	Remarks
Notebook	P95G001	8KM8HT2	Wistron Infocom (Chengdu) Company Limited	-
Notebook Adapter	LA65NS2-01	-	LITE-ON TECHNOLOGY (CHANGZHOU)CO.,LTD.	-
Micro SD Card	-	-	SanDisk	16 GB
PoE Adapter	POE 36U-1AT-R	P90215791A1	PHIHONG	-

**KES Co., Ltd.**

3701, 40, Simin-daero 365beon-gil,
Dongan-gu, Anyang-si, Gyeonggi-do, 14057, Korea
Tel: +82-31-425-6200 / Fax: +82-31-424-0450
www.kes.co.kr

Report No.:

KES-EM-21T0651-R1

Page (9) of (35)

1.6 External I/O Cabling

Start		END		Cable Spec.	
Description	I/O Port	Description	I/O Port	Length	Shield
NETWORK CAMERA (EUT)	SLOT	Micro SD Card	SLOT	-	-
	RJ-45 (PoE)	PoE Adapter	RJ-45 (PoE)	4.0	S
Notebook	RJ-45 (LAN)		RJ-45 (LAN)	3.0	S
	DC Jack	Notebook Adapter	DC Jack	1.5	U

* Unshielded=U, Shielded=S

1.7 EUT Operating Mode(s)

Test Mode	operating
Operation	the test was conducted while checking the camera video output from the laptop and making sure that they operate normally while performing a ping test.

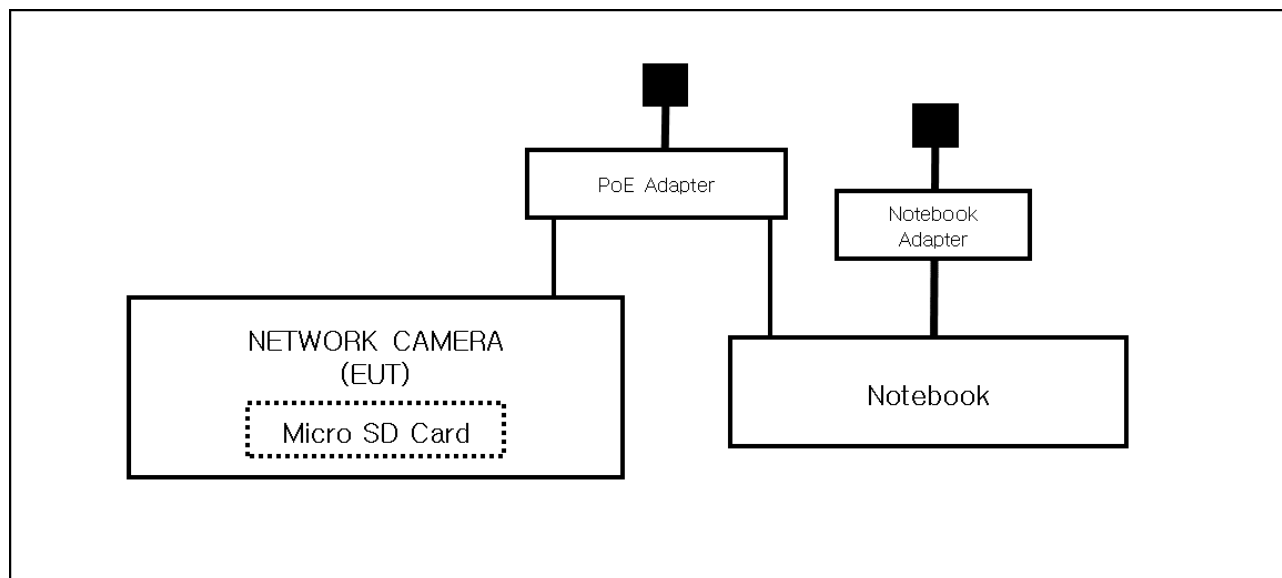
EUT Test operating S/W		
Name	Version	Manufacture Company
Web Viewer	-	Hanwha Vision Co., Ltd

This report shall not be reproduced except in full, without the written approval of KES Co., Ltd.
The results shown in this test report refer only to the sample(s) tested unless otherwise stated.
The authenticity of the test report, contact kes@kes.co.kr

1.8 Configuration

■ AC Main

□ DC Main



1.9 Remarks when standards applied

Micro USB port are for administrator use and are excluded from testing.







1.10 Calibration Details of Equipment Used for Measurement

Test equipment and test accessories are calibrated on regular basis. The maximum time between calibrations is one year or what is recommended by the manufacturer, whichever is less.

1.11 Test Facility

The measurement facility is located at 473-21, Gayeo-ro, Yeosu-si, Gyeonggi-do, 12658, Korea, Republic of. The sites are constructed in conformance with the requirements of ANSI C63.4a-2017 and CISPR 16-1-4:2019

1.12 Laboratory Accreditations and Listings

Country	Agency	Scope of Accreditation	Logo
KOREA	RRA	EMI (3 m & 10 m Semi-Anechoic Chamber and conducted test site) EMS (ESD, RS, EFT/Burst, Surge, CS, Magnetic, Dips and interruptions)	 KR0100
International	KOLAS	EMI (3 m & 10 m Semi-Anechoic Chamber and conducted test site) EMS (ESD, RS, EFT/Burst, Surge, CS, Magnetic, Dips and interruptions)	 KT489
USA	FCC	3 m & 10 m Semi-Anechoic Chamber Conducted test site to perform FCC Part 15/18 measurements.	 KR0100
Canada	ISED	3 m & 10 m Semi-Anechoic Chamber and Conducted test site	 23298
JAPAN	VCCI	EMI (3 m & 10 m Semi-Anechoic Chamber and conducted test site)	 C-20136, T-20137, R-20181, G-20176
Europe	TÜV SÜD	EMI (3 m & 10 m Semi-Anechoic Chamber and conducted test site) EMS (ESD, RS, EFT/Burst, Surge, CS, Magnetic, Dips and interruptions)	 CARAT 001633 0004



2.0 Test Regulations

The emissions tests were performed according to following regulations:

☐ **EMC – Directive 2014/30/EU**

☐ EN 61000-6-3:2011

☐ EN 61000-6-1:2007

☐ EN 61000-6-4:2007 +A1:2011

☐ EN 61000-6-2:2005

☐ EN 55011:2007 +A1:2010

☐ Group 1

☐ Group 2

☐ Class A

☐ Class B

☐ EN 55014-1:2006 +A2:2011

☐ EN 55014-2:1997 +A2:2008

☐ EN 55015:2013

☐ EN 55032:2015

☐ Class A

☐ Class B

☐ EN 55024:2010

☐ EN 50130-4:2011 +A1:2014

☐ EN 61000-3-2:2014

☐ EN 61000-3-3:2013

☐ EN 61326-1:2013



KES Co., Ltd.

3701, 40, Simin-daero 365beon-gil,
Dongan-gu, Anyang-si, Gyeonggi-do, 14057, Korea
Tel: +82-31-425-6200 / Fax: +82-31-424-0450
www.kes.co.kr

Report No.:

KES-EM-21T0651-R1

Page (13) of (35)

☐ **VCCI-CISPR 32:2016**

☐ Class A

☐ Class B

☐ **AS/NZS CISPR32:2015**

☐ Class A

☐ Class B

☒ **47 CFR Part 15, Subpart B**

☐ CISPR 22:2009 +A1:2010

☐ Class A

☐ Class B

☒ ANSI C63.4-2017

☒ Class A

☐ Class B

☒ **IC Regulation ICES-003 Issue 7**

☒ CAN/CSA CISPR 32-17

☒ Class A

☐ Class B

☐ ANSI C63.4-2017

☐ Class A

☐ Class B

☐ **RE- Directive 2014/53/EU**

☐ EN 301 489-1 V1.9.2

- ☐ Equipment for fixed use
- ☐ Equipment for vehicular use
- ☐ Equipment for portable use

☐ EN 301 489-3 V1.6.1

☐ EN 301 489-17 V2.2.1

☐ EN 60945:2002

This report shall not be reproduced except in full, without the written approval of KES Co., Ltd.
The results shown in this test report refer only to the sample(s) tested unless otherwise stated.
The authenticity of the test report, contact kes@kes.co.kr

**KES Co., Ltd.**

3701, 40, Simin-daero 365beon-gil,
Dongan-gu, Anyang-si, Gyeonggi-do, 14057, Korea
Tel: +82-31-425-6200 / Fax: +82-31-424-0450
www.kes.co.kr

Report No.:

KES-EM-21T0651-R1

Page (14) of (35)

2.1 Conducted Emissions at Mains Power Ports

Test Date

Jul. 03, 2021

Test Location

Electro wave Shieldroom #6

Test Equipment

Used	Description	Model Number	Manufacturer	Serial Number	Cal. Due
<input checked="" type="checkbox"/>	EMI Test S/W	EMC32	R & S	9.12.00	-
<input checked="" type="checkbox"/>	EMI TEST RECEIVER	ESR3	R & S	101783	01, 15, 2022
<input checked="" type="checkbox"/>	LISN	ENV216	R & S	101787	12, 29, 2021
<input checked="" type="checkbox"/>	LISN	ESH2-Z5	R & S	100450	12, 29, 2021
<input checked="" type="checkbox"/>	PULSE LIMITER	ESH3-Z2	R & S	101915	12, 29, 2021

Test Conditions

Temperature: (25,2 ± 0,4) °C

Relative Humidity: (46,9 ± 0,3) % R.H.

Frequency Range of Measurement

150 kHz to 30 MHz

Instrument Settings

IF Band Width: 9 kHz

Test Results

The requirements are:

- ☒ PASS
☐ NOT PASS
☐ NOT APPLICABLE

RemarksSee Appendix A for test data.

This report shall not be reproduced except in full, without the written approval of KES Co., Ltd.
The results shown in this test report refer only to the sample(s) tested unless otherwise stated.
The authenticity of the test report, contact kes@kes.co.kr

**KES Co., Ltd.**

3701, 40, Simin-daero 365beon-gil,
Dongan-gu, Anyang-si, Gyeonggi-do, 14057, Korea
Tel: +82-31-425-6200 / Fax: +82-31-424-0450
www.kes.co.kr

Report No.:

KES-EM-21T0651-R1

Page (15) of (35)

2.2 Radiated Electric Field Emissions(Below 1 GHz)

Test Date

Jul. 03, 2021

Test Location☐ OPEN AREA TEST SITE #2☒ SEMI ANECHOIC CHAMBER #4(10m)**Test Equipment**

Used	Description	Model Number	Manufacturer	Serial Number	Cal. Due
<input checked="" type="checkbox"/>	EMI Test S/W	EP5/RE	TOYO Corporation	6.0.0	-
<input checked="" type="checkbox"/>	EMI TEST RECEIVER	ESU26	R & S	100551	04, 01, 2022
<input checked="" type="checkbox"/>	AMPLIFIER	SCU 01	R & S	100603	11, 25, 2021
<input checked="" type="checkbox"/>	TRILOG-BROADBAND ANTENNA	VULB9163	Schwarzbeck	715	12, 08, 2022
<input checked="" type="checkbox"/>	ATTENUATOR	8491A	HP	32173	03, 10, 2022

Test Conditions

Temperature: (24,8 ± 0,3) °C

Relative Humidity: (49,2 ± 0,3) % R.H.

Frequency Range of Measurement

30 MHz to 1 GHz

Instrument Settings

IF Band Width: 120 kHz

Test Results

The requirements are:

☒ PASS☐ NOT PASS☐ NOT APPLICABLE**Remarks**See Appendix A for test data.

This report shall not be reproduced except in full, without the written approval of KES Co., Ltd.

The results shown in this test report refer only to the sample(s) tested unless otherwise stated.

The authenticity of the test report, contact kes@kes.co.kr

**KES Co., Ltd.**

3701, 40, Simin-daero 365beon-gil,
Dongan-gu, Anyang-si, Gyeonggi-do, 14057, Korea
Tel: +82-31-425-6200 / Fax: +82-31-424-0450
www.kes.co.kr

Report No.:

KES-EM-21T0651-R1

Page (16) of (35)

2.3 Radiated Electric Field Emissions(Above 1 GHz)

Test Date

Jul. 03, 2021

Test Location

SEMI ANECHOIC CHAMBER #5

Test Equipment

Used	Description	Model Number	Manufacturer	Serial Number	Cal. Due
<input checked="" type="checkbox"/>	EMI Test S/W	EP5/RE	TOYO Corporation	6.0.120	-
<input checked="" type="checkbox"/>	EMI TEST RECEIVER	ESU26	Rohde & Schwarz	100552	04, 01, 2022
<input checked="" type="checkbox"/>	HORN ANTENNA	BBHA 9120D	SCHWARZBECK	9120D-1802	12, 14, 2021
<input checked="" type="checkbox"/>	PREAMPLIFIER	8449B	HP	3008A00538	06, 21, 2022

Test Conditions

Temperature: (25,4 ± 0,5) °C

Relative Humidity: (45,3 ± 0,4) % R.H.

Frequency Range of Measurement

1 GHz to 5 GHz

Instrument Settings

IF Band Width: 1 MHz

Test Results

The requirements are:

☒ PASS☐ NOT PASS☐ NOT APPLICABLE**Remarks**See Appendix A for test data.

This report shall not be reproduced except in full, without the written approval of KES Co., Ltd.

The results shown in this test report refer only to the sample(s) tested unless otherwise stated.

The authenticity of the test report, contact kes@kes.co.kr

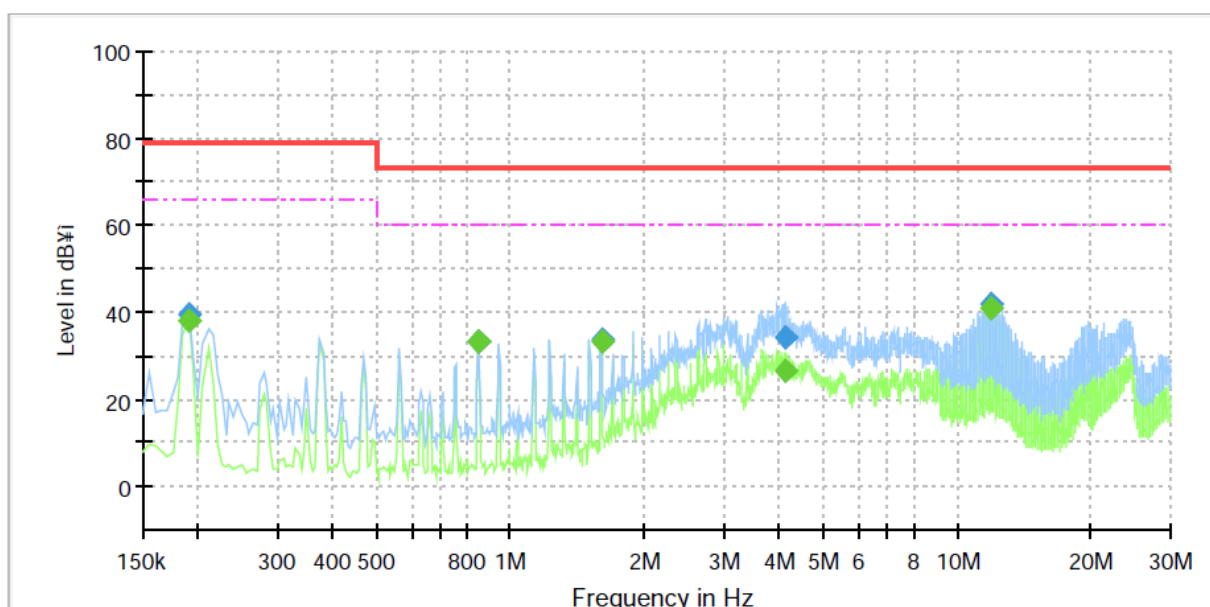
APPENDIX A – TEST DATA

Conducted Emissions at Mains Power Ports

HOT LINE

Common Information

Test Description:	Conducted Emission
Model No.:	QNP-6320R
Phase:	FCC
Mode:	PoE
Operator Name:	KES



Final Result

Frequency (MHz)	QuasiPeak (dBμV)	CAverage (dBμV)	Limit (dBμV)	Margin (dB)	Meas. Time (ms)	Bandwidth (kHz)	Line	Corr. (dB)
0.190000	---	37.99	66.00	28.01	1000.0	9.000	L1	19.4
0.190000	39.62	---	79.00	39.38	1000.0	9.000	L1	19.4
0.845000	---	33.14	60.00	26.86	1000.0	9.000	L1	20.0
0.845000	33.08	---	73.00	39.92	1000.0	9.000	L1	20.0
1.600000	---	33.44	60.00	26.56	1000.0	9.000	L1	20.2
1.600000	33.58	---	73.00	39.42	1000.0	9.000	L1	20.2
4.115000	---	26.37	60.00	33.63	1000.0	9.000	L1	19.9
4.115000	34.00	---	73.00	39.00	1000.0	9.000	L1	19.9
11.945000	---	41.14	60.00	18.86	1000.0	9.000	L1	20.0
11.945000	41.79	---	73.00	31.21	1000.0	9.000	L1	20.0

This report shall not be reproduced except in full, without the written approval of KES Co., Ltd.

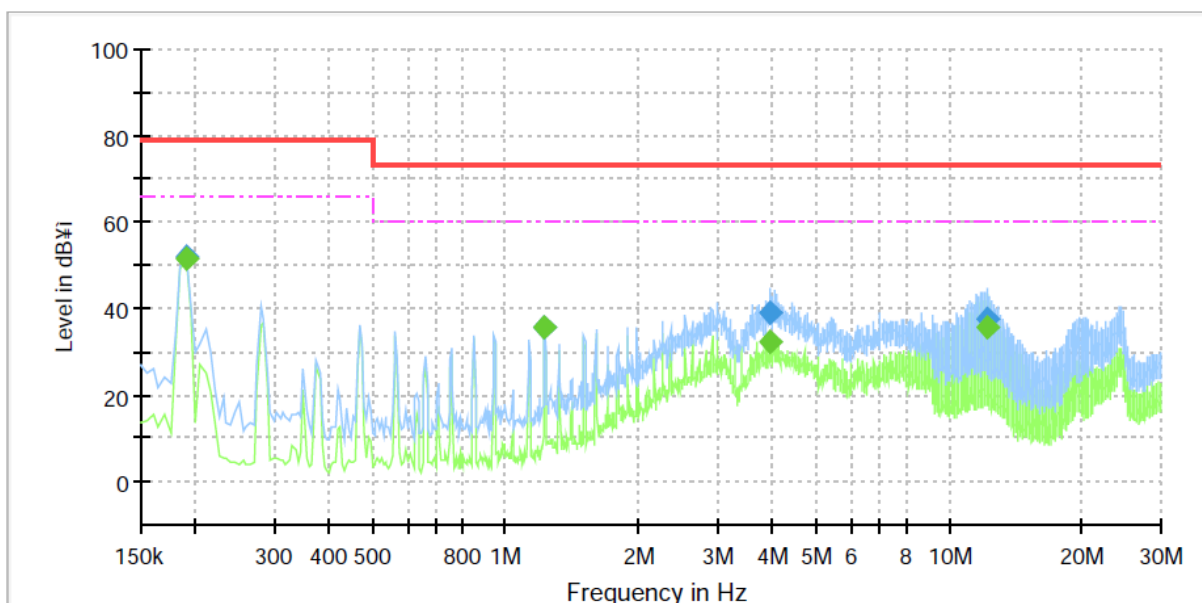
The results shown in this test report refer only to the sample(s) tested unless otherwise stated.

The authenticity of the test report, contact kes@kes.co.kr

NEUTRAL LINE

Common Information

Test Description:	Conducted Emission
Model No.:	QNP-6320R
Phase:	FCC
Mode:	PoE
Operator Name:	KES



Final Result

Frequency (MHz)	QuasiPeak (dBµV)	CAverage (dBµV)	Limit (dBµV)	Margin (dB)	Meas. Time (ms)	Bandwidth (kHz)	Line	Corr. (dB)
0.190000	---	51.51	66.00	14.49	1000.0	9.000	N	19.4
0.190000	51.82	---	79.00	27.18	1000.0	9.000	N	19.4
1.225000	---	35.49	60.00	24.51	1000.0	9.000	N	20.1
1.225000	35.51	---	73.00	37.49	1000.0	9.000	N	20.1
3.955000	---	32.24	60.00	27.76	1000.0	9.000	N	19.9
3.955000	38.93	---	73.00	34.07	1000.0	9.000	N	19.9
12.150000	---	35.67	60.00	24.33	1000.0	9.000	N	20.0
12.150000	37.32	---	73.00	35.68	1000.0	9.000	N	20.0

◆ Calculation

$$\text{QuasiPeak [dBuV]} / \text{CAverage [dBuV]} = \text{Reading Value [dBuV]} + \text{Corr. [dB]}$$

QuasiPeak / CAverage : The Final Value

Reading Value : Not shown in the table.

Corr. : Correction values (LISN FACTOR + (Cable Loss + Pulse Limiter FACTOR))



KES Co., Ltd.

3701, 40, Simin-daero 365beon-gil,
Dongan-gu, Anyang-si, Gyeonggi-do, 14057, Korea
Tel: +82-31-425-6200 / Fax: +82-31-424-0450
www.kes.co.kr

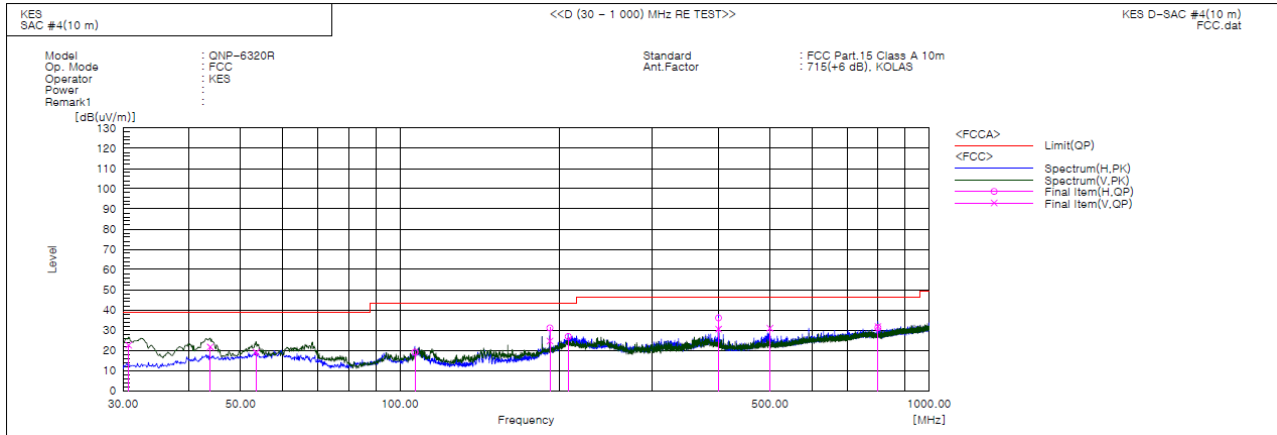
Report No.:

KES-EM-21T0651-R1

Page (19) of (35)

Radiated Electric Field Emissions(Below 1 GHz)

- 47 CFR Part 15, Subpart B



Final Result

No.	Frequency [MHz]	(P)	Reading QP [dB(uV)]	c.f [dB(1/m)]	Result QP [dB(uV/m)]	Limit QP [dB(uV/m)]	Margin QP [dB]	Height [cm]	Angle [deg]	Remark
1	30.728	V	47.8	-25.3	22.5	39.0	16.5	100.0	197.0	
2	43.823	V	43.3	-21.6	21.7	39.0	17.3	100.0	186.0	
3	53.523	V	40.2	-21.2	19.0	39.0	20.0	105.0	170.0	
4	106.751	H	41.5	-22.4	19.1	43.5	24.4	324.0	2.0	
5	191.990	H	52.8	-21.7	31.1	43.5	12.4	395.0	250.0	
6	191.990	V	46.3	-21.7	24.6	43.5	18.9	101.0	353.0	
7	207.995	H	47.4	-20.6	26.8	43.5	16.7	394.0	98.0	
8	400.055	H	50.3	-14.3	36.0	46.5	10.5	400.0	114.0	
9	400.055	V	44.8	-14.3	30.5	46.5	16.0	144.0	309.0	
10	500.086	V	42.6	-11.6	31.0	46.5	15.5	100.0	156.0	
11	800.059	H	37.6	-6.3	31.3	46.5	15.2	397.0	84.0	
12	800.059	V	38.1	-6.3	31.8	46.5	14.7	101.0	174.0	

This report shall not be reproduced except in full, without the written approval of KES Co., Ltd.

The results shown in this test report refer only to the sample(s) tested unless otherwise stated.

The authenticity of the test report, contact kes@kes.co.kr



KES Co., Ltd.

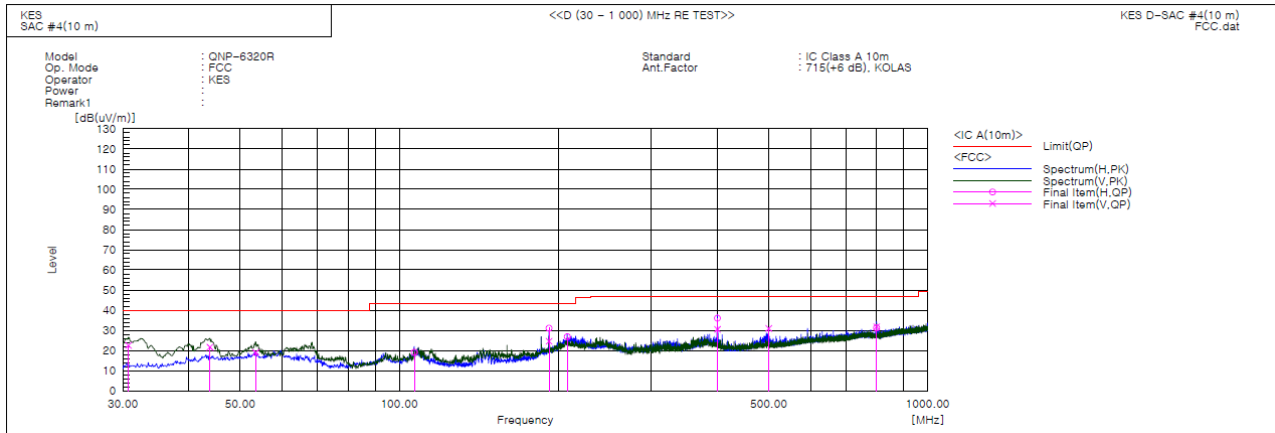
3701, 40, Simin-daero 365beon-gil,
Dongan-gu, Anyang-si, Gyeonggi-do, 14057, Korea
Tel: +82-31-425-6200 / Fax: +82-31-424-0450
www.kes.co.kr

Report No.:

KES-EM-21T0651-R1

Page (20) of (35)

- IC Regulation ICES-003 Issue 7



No.	Frequency [MHz]	(P)	Reading QP [dB(uV)]	c.f [dB(1/m)]	Result QP [dB(uV/m)]	Limit QP [dB(uV/m)]	Margin QP [dB]	Height [cm]	Angle [deg]	Remark
1	30.728	V	47.8	-25.3	22.5	40.0	17.5	100.0	197.0	
2	43.823	V	43.3	-21.6	21.7	40.0	18.3	100.0	186.0	
3	53.523	V	40.2	-21.2	19.0	40.0	21.0	105.0	170.0	
4	106.751	H	41.5	-22.4	19.1	43.5	24.4	324.0	2.0	
5	191.990	H	52.8	-21.7	31.1	43.5	12.4	395.0	250.0	
6	191.990	V	46.3	-21.7	24.6	43.5	18.9	101.0	353.0	
7	207.995	H	47.4	-20.6	26.8	43.5	16.7	394.0	98.0	
8	400.055	H	50.3	-14.3	36.0	47.0	11.0	400.0	114.0	
9	400.055	V	44.8	-14.3	30.5	47.0	16.5	144.0	309.0	
10	500.086	V	42.6	-11.6	31.0	47.0	16.0	100.0	156.0	
11	800.059	H	37.6	-6.3	31.3	47.0	15.7	397.0	84.0	
12	800.059	V	38.1	-6.3	31.8	47.0	15.2	101.0	174.0	

◆ Calculation – SAC #4(10 m)

Result(QP) [dB(μ V/m)] = (Reading(QP)[dB(μ V)] + c.f[dB(1/m)])

Margin(QP)[dB] = Limit[dB(μ V/m)] - Result(QP) [dB(μ V/m)]

Reading(QP) : Reading value, Result(QP) : Reading value + Factor value

Limit(QP) : Limit value, c.f : (ANT Factor + Cable Loss - Preamp Factor), Margin: Margin value

This report shall not be reproduced except in full, without the written approval of KES Co., Ltd.

The results shown in this test report refer only to the sample(s) tested unless otherwise stated.

The authenticity of the test report, contact kes@kes.co.kr



KES Co., Ltd.

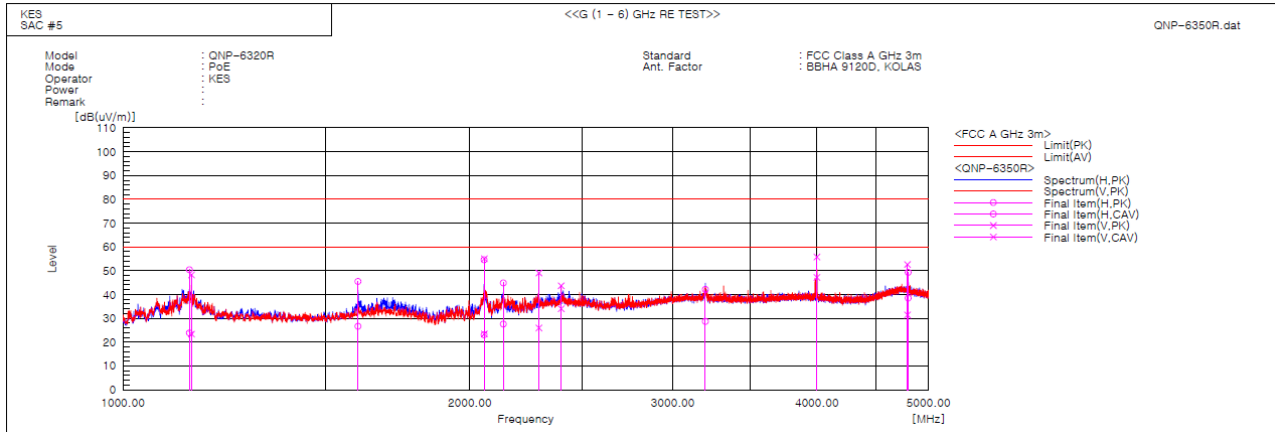
3701, 40, Simin-daero 365beon-gil,
Dongan-gu, Anyang-si, Gyeonggi-do, 14057, Korea
Tel: +82-31-425-6200 / Fax: +82-31-424-0450
www.kes.co.kr

Report No.:

KES-EM-21T0651-R1

Page (21) of (35)

Radiated Electric Field Emissions(Above 1 GHz)



Final Result

No.	Frequency [MHz]	(P)	Reading PK [dB(μV)]	Reading CAV [dB(μV)]	c.f [dB(1/m)]	Result PK [dB(μV/m)]	Result CAV [dB(μV/m)]	Limit PK [dB(μV/m)]	Limit AV [dB(μV/m)]	Margin PK [dB]	Margin CAV [dB]	Height [cm]	Angle [deg]	Remark
1	1142.000	H	57.9	31.4	-7.5	50.4	23.9	80.0	60.0	29.6	36.1	335.0	246.4	
2	1146.500	V	55.8	30.9	-7.5	48.3	23.4	80.0	60.0	31.7	36.6	124.0	351.7	
3	1599.500	H	50.9	32.1	-5.4	45.5	26.7	80.0	60.0	34.5	33.3	400.0	170.9	
4	2057.500	H	58.3	26.8	-3.7	54.6	23.1	80.0	60.0	25.4	36.9	276.0	79.4	
5	2058.500	V	58.8	27.2	-3.7	55.1	23.5	80.0	60.0	24.9	36.5	101.0	144.1	
6	2138.000	H	48.4	31.1	-3.5	44.9	27.6	80.0	60.0	35.1	32.4	309.0	136.4	
7	2296.000	V	52.1	29.0	-3.0	49.1	26.0	80.0	60.0	30.9	34.0	163.0	135.6	
8	2400.000	V	46.4	36.8	-2.7	43.7	34.1	80.0	60.0	36.3	25.9	100.0	171.9	
9	3201.500	H	42.4	28.9	-0.2	42.2	28.7	80.0	60.0	37.8	31.3	371.0	33.0	
10	4000.500	V	54.3	45.7	1.5	55.8	47.2	80.0	60.0	24.2	12.8	100.0	165.4	
11	4794.000	V	47.8	26.6	4.9	52.7	31.5	80.0	60.0	27.3	28.5	101.0	359.6	
12	4800.500	H	44.4	33.6	4.9	49.3	38.5	80.0	60.0	30.7	21.5	324.0	98.3	

◆ Calculation

Result(PK/CAV) [dB(μV/m)] = (Reading(PK/CAV)[dB(μV)] + c.f[dB(1/m)]

Margin(PK/CAV)[dB] = Limit[dB(μV/m)] - Result(PK/CAV) [dB(μV/m)]

Reading(PK/CAV) : Reading value, Result(PK/CAV) : Reading value + Factor value

Limit(QP) : Limit value, c.f : (ANT Factor + Cable Loss - Preamp Factor), Margin: Margin value

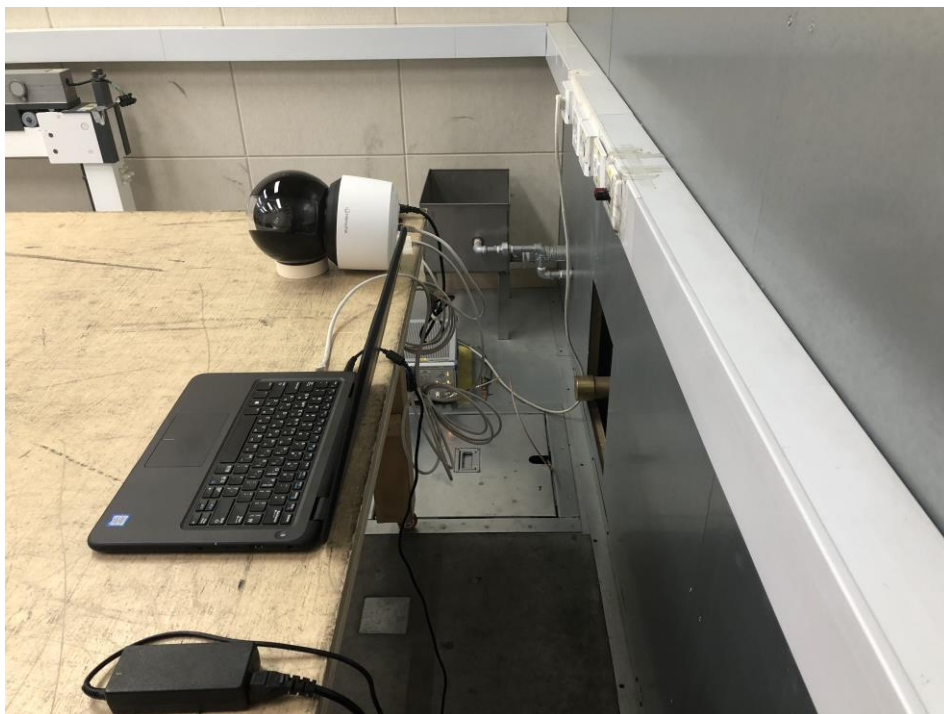
This report shall not be reproduced except in full, without the written approval of KES Co., Ltd.

The results shown in this test report refer only to the sample(s) tested unless otherwise stated.

The authenticity of the test report, contact kes@kes.co.kr

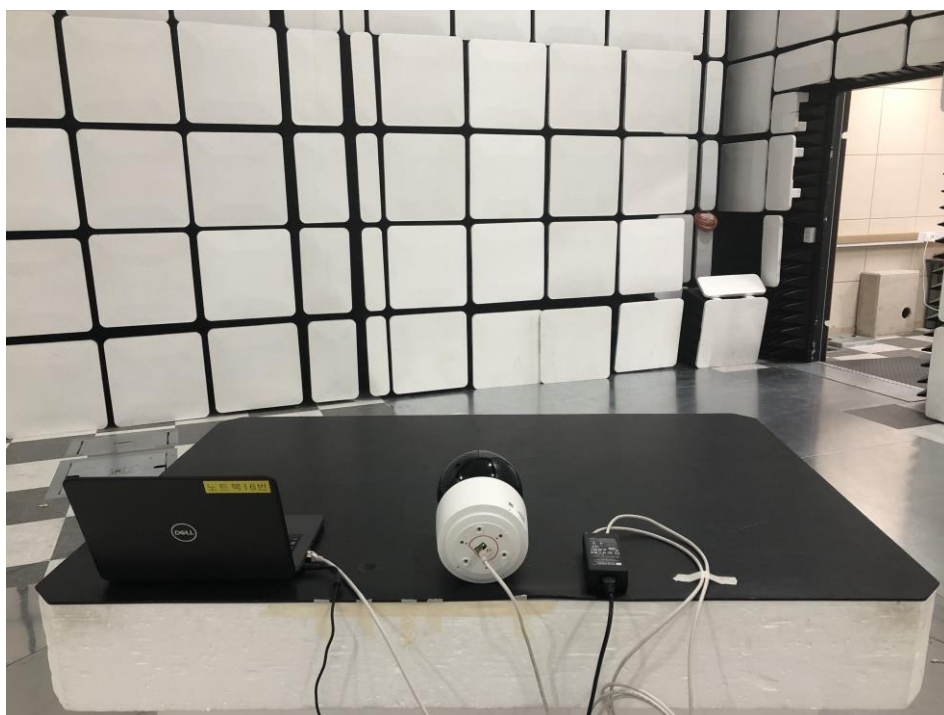
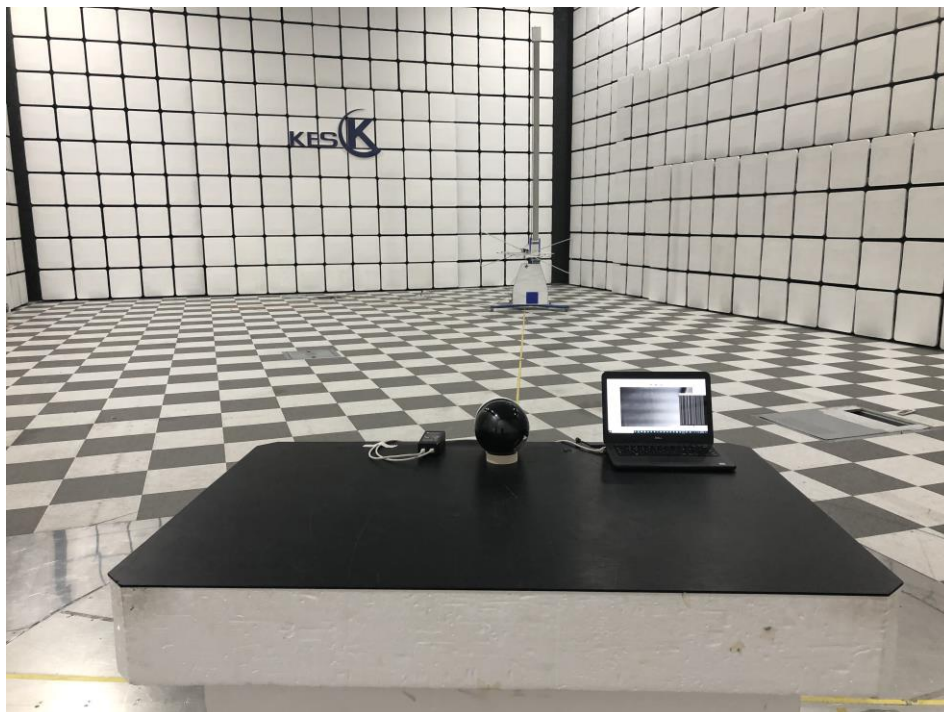
Test Setup Photos and Configuration

Conducted Emissions at Mains Power Ports



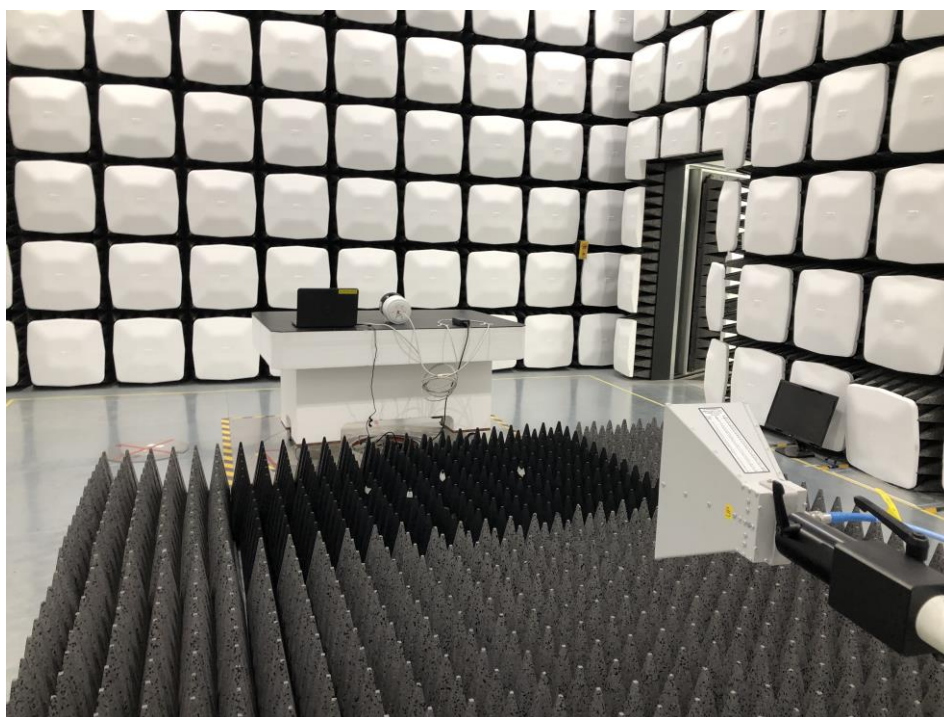
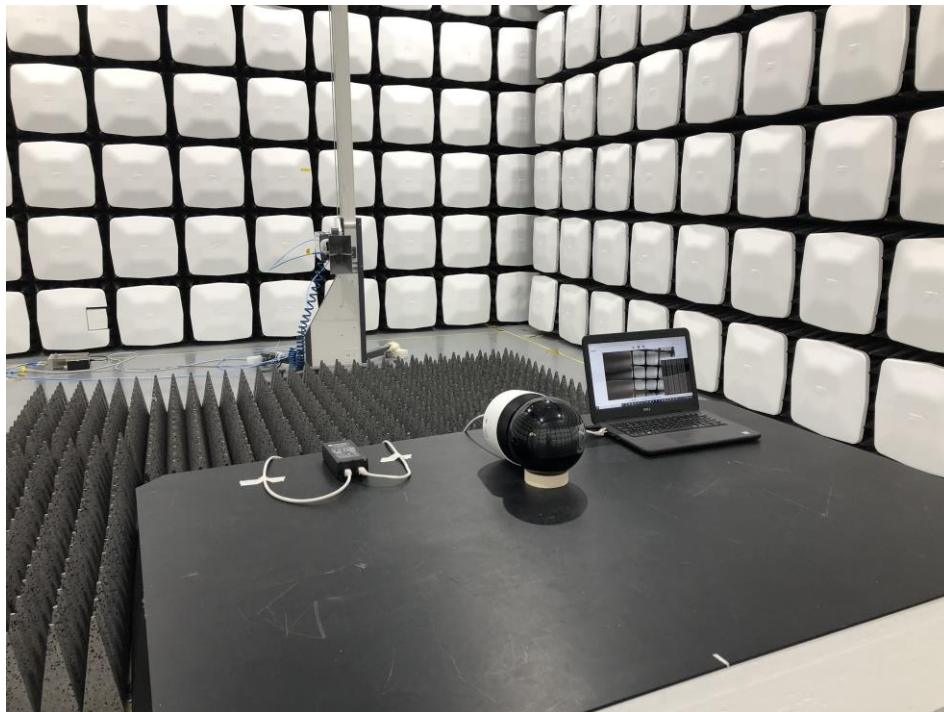
This report shall not be reproduced except in full, without the written approval of KES Co., Ltd.
The results shown in this test report refer only to the sample(s) tested unless otherwise stated.
The authenticity of the test report, contact kes@kes.co.kr

Radiated Electric Field Emissions(Below 1 GHz)



This report shall not be reproduced except in full, without the written approval of KES Co., Ltd.
The results shown in this test report refer only to the sample(s) tested unless otherwise stated.
The authenticity of the test report, contact kes@kes.co.kr

Radiated Electric Field Emissions(Above 1 GHz)



This report shall not be reproduced except in full, without the written approval of KES Co., Ltd.
The results shown in this test report refer only to the sample(s) tested unless otherwise stated.
The authenticity of the test report, contact kes@kes.co.kr

EUT External Photographs

(Top)



(Bottom)



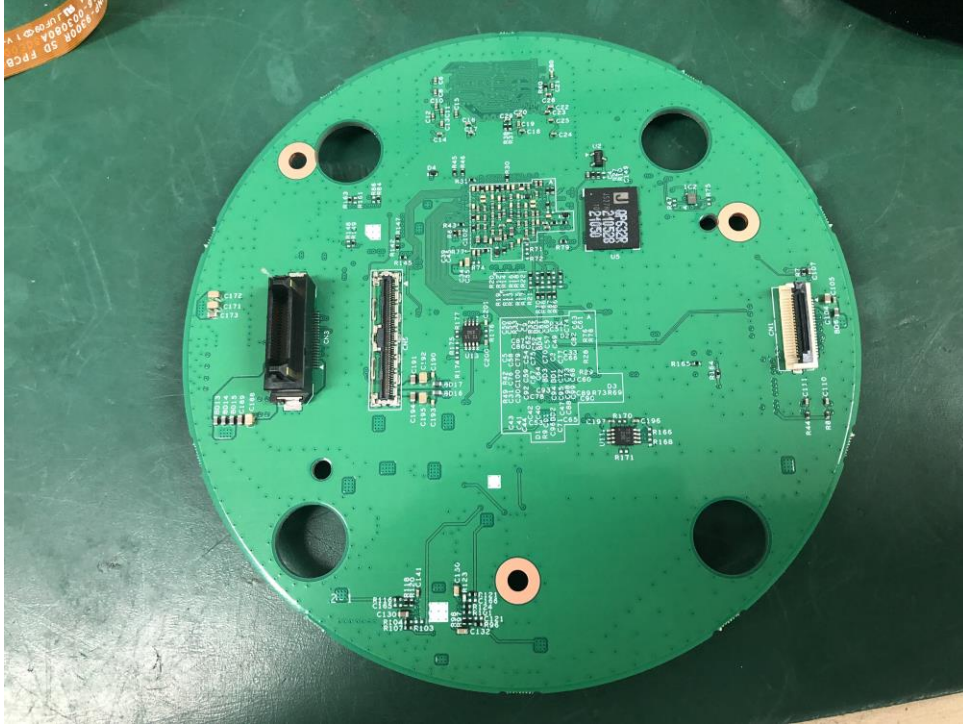
EUT Internal Photographs

(Internal View)

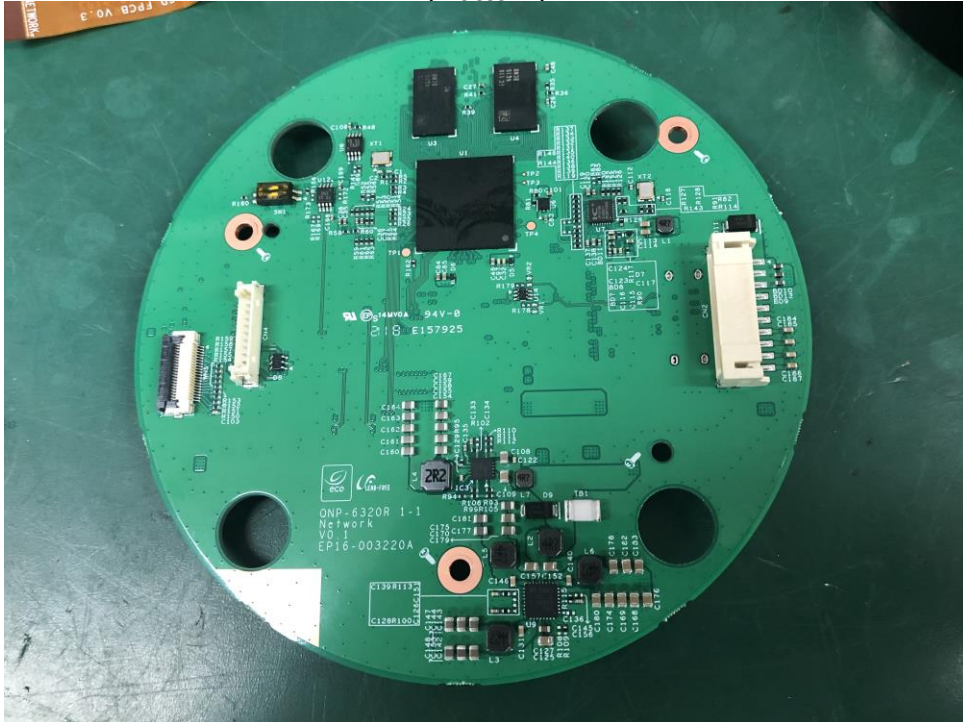


EUT Internal View – Board 1

(Top)



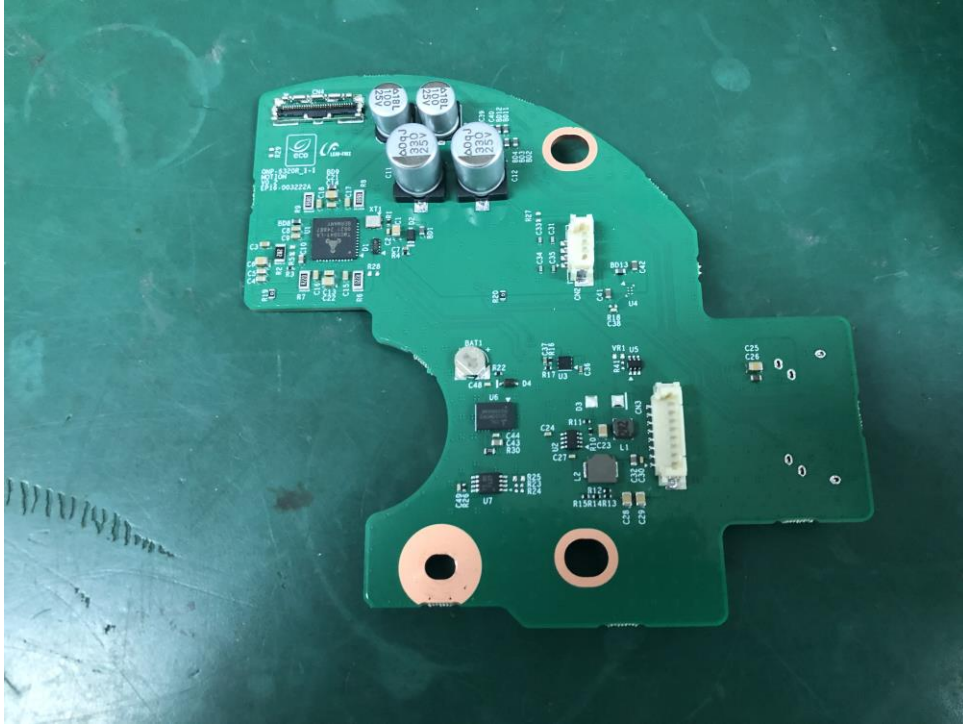
(Bottom)



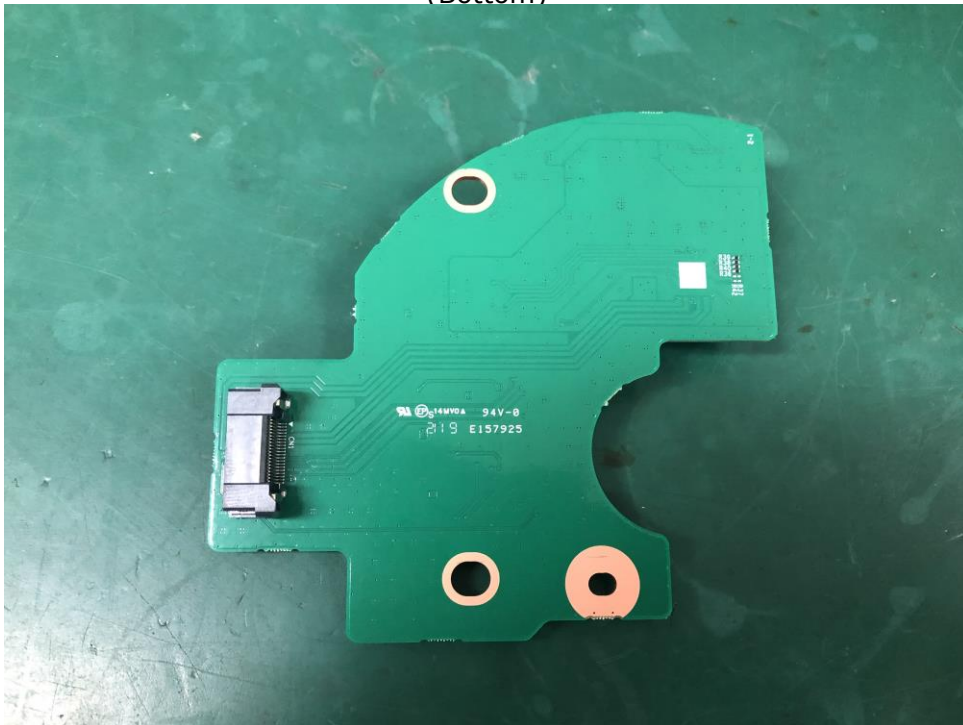
This report shall not be reproduced except in full, without the written approval of KES Co., Ltd.
The results shown in this test report refer only to the sample(s) tested unless otherwise stated.
The authenticity of the test report, contact kes@kes.co.kr

EUT Internal View – Board 2

(Top)



(Bottom)



This report shall not be reproduced except in full, without the written approval of KES Co., Ltd.
The results shown in this test report refer only to the sample(s) tested unless otherwise stated.
The authenticity of the test report, contact kes@kes.co.kr

EUT Internal View – Board 3

(Top)



(Bottom)



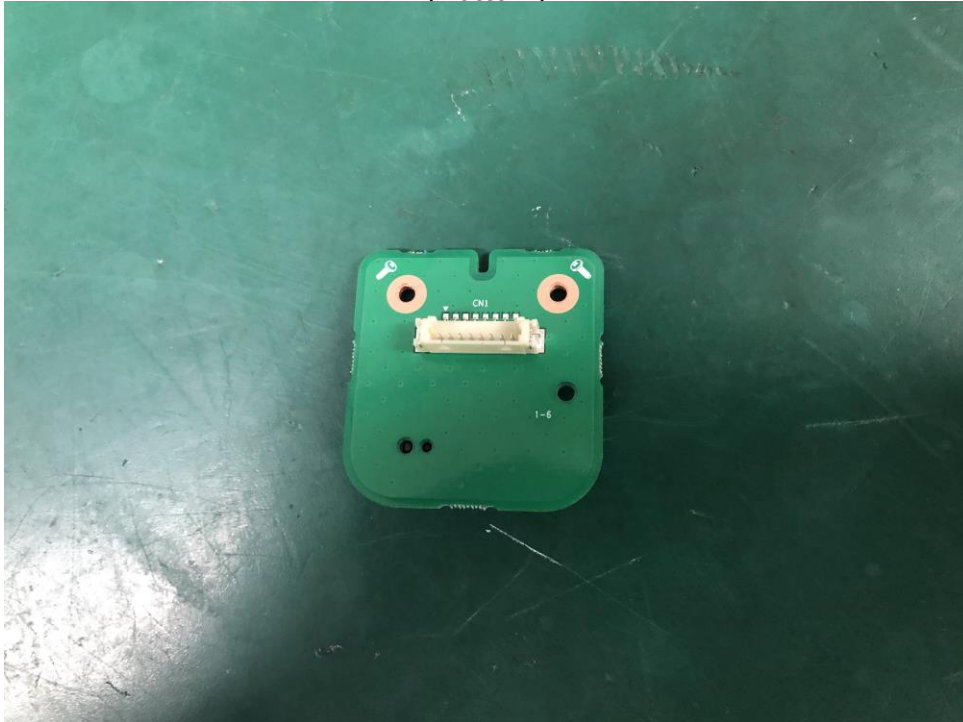
This report shall not be reproduced except in full, without the written approval of KES Co., Ltd.
The results shown in this test report refer only to the sample(s) tested unless otherwise stated.
The authenticity of the test report, contact kes@kes.co.kr

EUT Internal View – Board 4

(Top)



(Bottom)



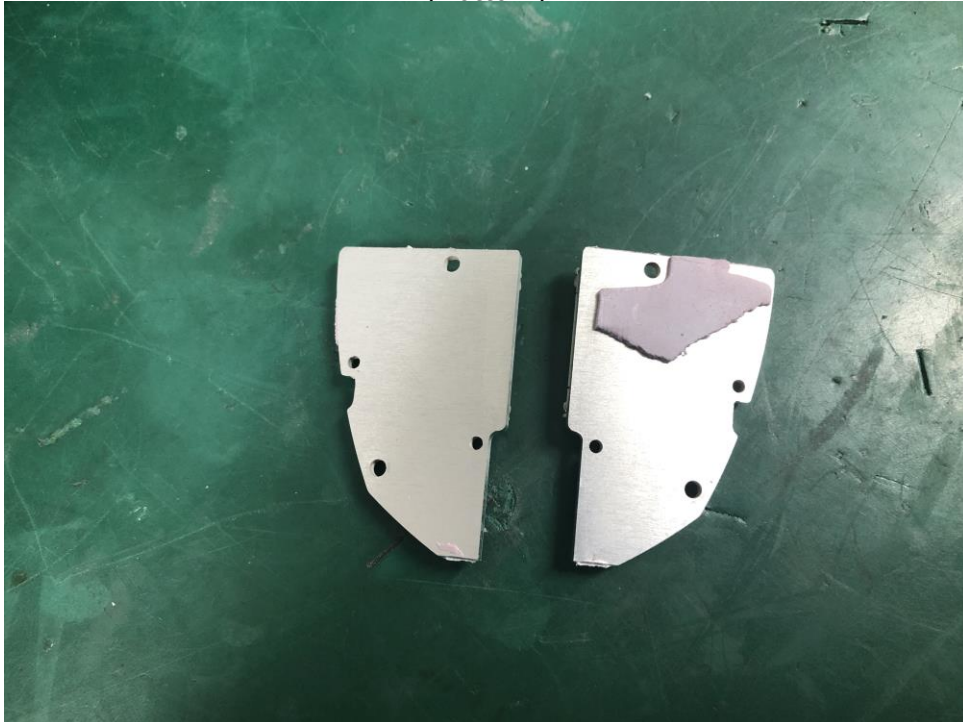
This report shall not be reproduced except in full, without the written approval of KES Co., Ltd.
The results shown in this test report refer only to the sample(s) tested unless otherwise stated.
The authenticity of the test report, contact kes@kes.co.kr

EUT Internal View – Board 5

(Top)



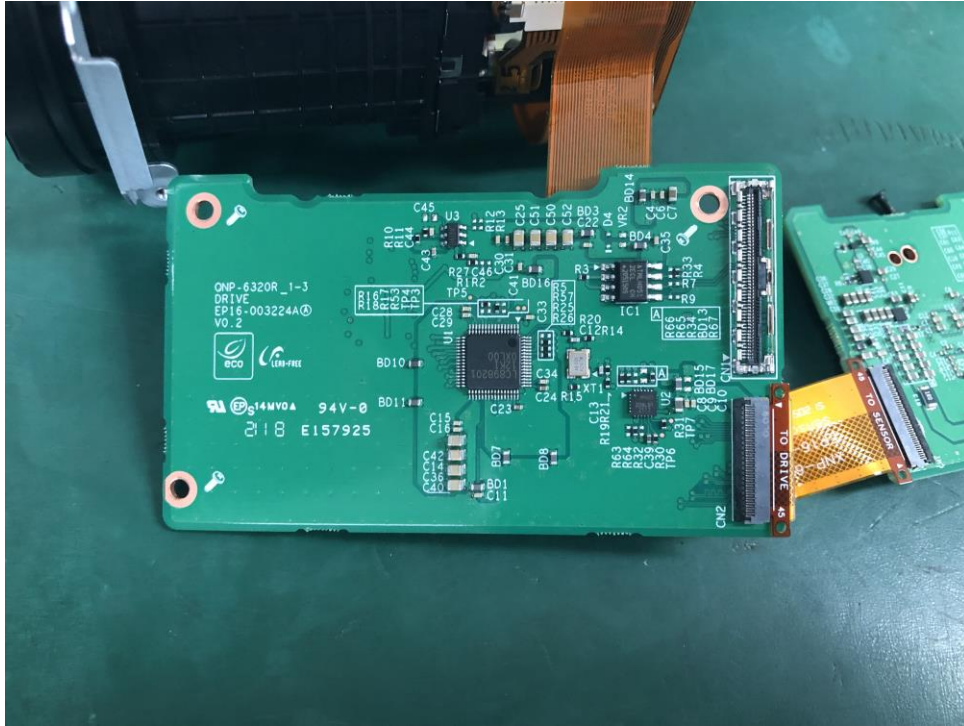
(Bottom)



This report shall not be reproduced except in full, without the written approval of KES Co., Ltd.
The results shown in this test report refer only to the sample(s) tested unless otherwise stated.
The authenticity of the test report, contact kes@kes.co.kr

EUT Internal View – Board 6

(Top)



(Bottom)



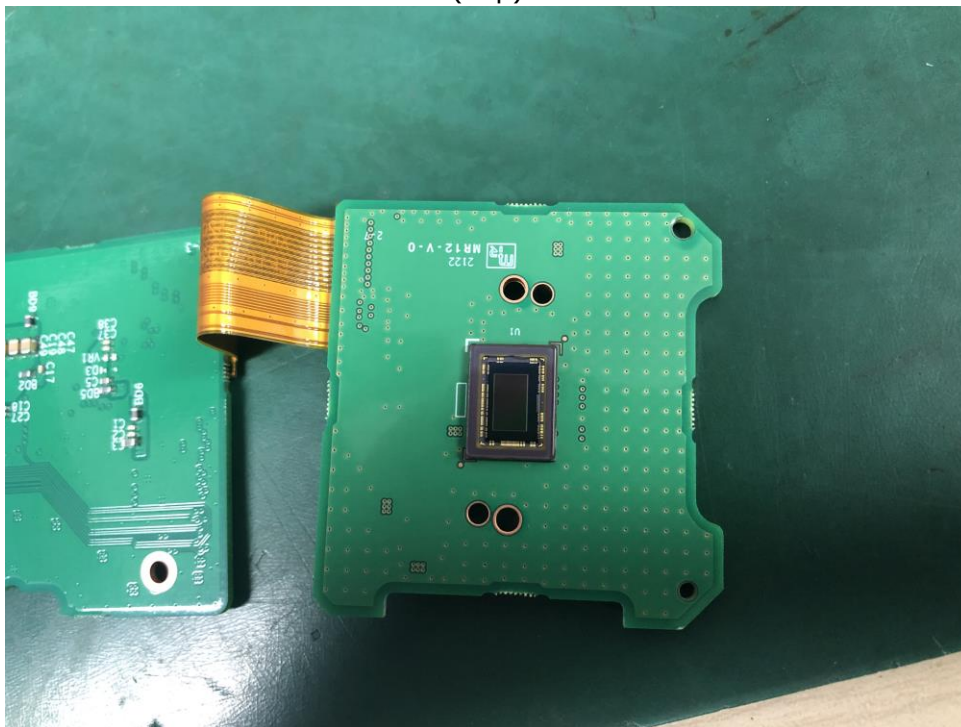
This report shall not be reproduced except in full, without the written approval of KES Co., Ltd.

The results shown in this test report refer only to the sample(s) tested unless otherwise stated.

The authenticity of the test report, contact kes@kes.co.kr

EUT Internal View – Board 7

(Top)



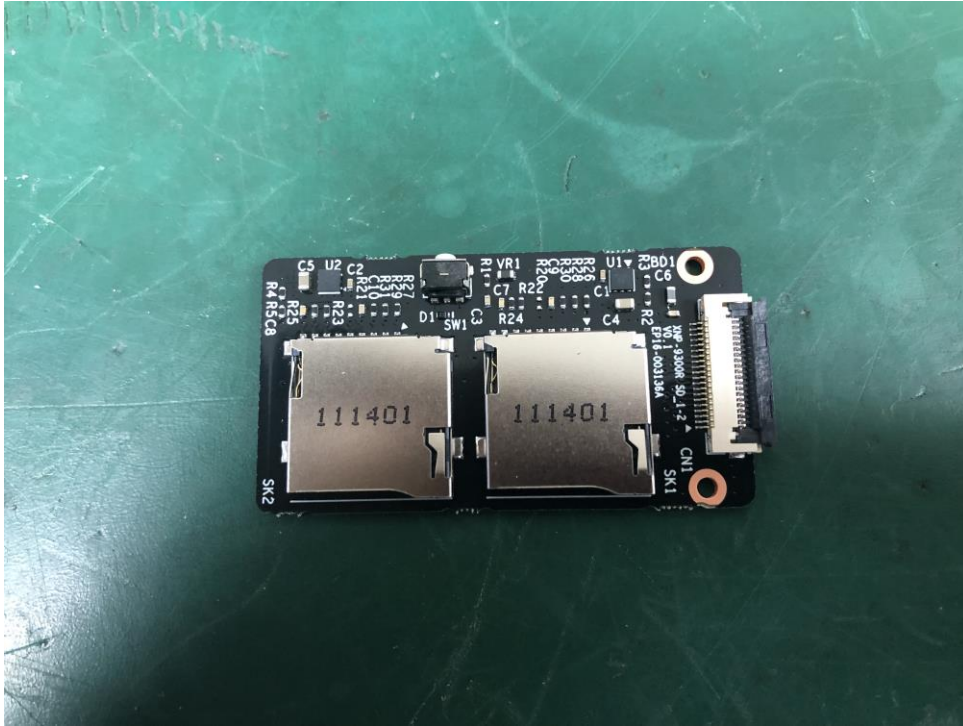
(Bottom)



This report shall not be reproduced except in full, without the written approval of KES Co., Ltd.
The results shown in this test report refer only to the sample(s) tested unless otherwise stated.
The authenticity of the test report, contact kes@kes.co.kr

EUT Internal View – Board 8

(Top)



(Bottom)



This report shall not be reproduced except in full, without the written approval of KES Co., Ltd.
The results shown in this test report refer only to the sample(s) tested unless otherwise stated.
The authenticity of the test report, contact kes@kes.co.kr

Label Photographs



CAN ICES-3(A) / NMB-3(A)

This device complies with part 15 of the FCC Rules. Operation is subject to the following two conditions: (1) This device may not cause harmful interference, and (2) this device must accept any interference received, including interference that may cause undesired operation

This device complies with Industry Canada license-exempt RSS standard(s). Operation is subject to the following two conditions: (1) this device may not cause interference, and (2) this device must accept any interference, including interference that may cause undesired operation of the device.

Le présent appareil est conforme aux CNR d'Industrie Canada applicables aux appareils radio exempts de licence. L'exploitation est autorisée aux deux conditions suivantes :

(1) l'appareil ne doit pas produire de brouillage, et (2) l'utilisateur de l'appareil doit accepter tout brouillage radioélectrique subi, même si le brouillage est susceptible d'en compromettre le fonctionnement.