

**KES Co., Ltd.**

3701, 40, Simin-daero 365beon-gil,
Dongan-gu, Anyang-si, Gyeonggi-do, 14057, Korea
Tel: +82-31-425-6200 / Fax: +82-31-424-0450
www.kes.co.kr

Report No.:

KES-EM-21T1133-R1

Page (1) of (33)

EMC TEST REPORT

Test Report No. : KES-EM-21T1133-R1
Date of Issue : Feb. 24, 2023
Product name : NETWORK CAMERA
Model/Type No. : QNP-6320HS
Variant Model : -
Applicant : Hanwha Vision Co., Ltd
Applicant Address : 6, Pangyo-ro 319Beon-gil, Bundang-gu, Seongnam-si,
Gyeonggi-do, Republic of Korea
Manufacturer : 1. HANWHA VISION VIETNAM COMPANY LIMITED
2. D-TECH CO.,LTD.
Manufacturer Address : 1. Lot O-2, Que Vo Industrial Zone extended area,
Nam Son commune, Bac Ninh city, Bac Ninh province, Vietnam
2. 173-25, Saneop-ro, Gwonseon-gu, Suwon-si, Gyeonggi- do,
Korea (Suwon Industrial Complex)
Equipment authorization : **Supplier's Declaration of Conformity**
Date of Receipt : Nov. 04, 2021
Test date : Nov. 11, 2021 ~ Nov. 12, 2021
Test Results : ☒ **In Compliance** ☐ **Not in Compliance**

Tested by

Eun Gu, Jeon
EMC Test Engineer

Reviewed by

Dong-Hun, Jang
EMC Technical Manager

This test report is not related to KS Q ISO/IEC 17025 and KOLAS.

This report shall not be reproduced except in full, without the written approval of KES Co., Ltd.
The results shown in this test report refer only to the sample(s) tested unless otherwise stated.
The authenticity of the test report, contact kes@kes.co.kr

**KES Co., Ltd.**

3701, 40, Simin-daero 365beon-gil,
Dongan-gu, Anyang-si, Gyeonggi-do, 14057, Korea
Tel: +82-31-425-6200 / Fax: +82-31-424-0450
www.kes.co.kr

Report No.:

KES-EM-21T1133-R1

Page (2) of (33)

REPORT REVISION HISTORY

Date	Test Report No.	Revision History
Nov. 25, 2021	KES-EM-21T1133	Issued
Feb. 24, 2023	KES-EM-21T1133-R1	Change the Applicant and manufacturer at the request of the customer

This report shall not be reproduced except in full, without the written approval of KES Co., Ltd. This document may be altered or revised by KES Co., Ltd. personnel only, and shall be noted in the revision section of the document. Any alteration of this document not carried out by KES Co., Ltd. will constitute fraud and shall nullify the document.

This report shall not be reproduced except in full, without the written approval of KES Co., Ltd.
The results shown in this test report refer only to the sample(s) tested unless otherwise stated.
The authenticity of the test report, contact kes@kes.co.kr



KES Co., Ltd.

3701, 40, Simin-daero 365beon-gil,
Dongan-gu, Anyang-si, Gyeonggi-do, 14057, Korea
Tel: +82-31-425-6200 / Fax: +82-31-424-0450
www.kes.co.kr

Report No.:

KES-EM-21T1133-R1

Page (3) of (33)

TABLE OF CONTENTS

1.0	General Product Description.....	4
1.1	Test Voltage & Frequency	7
1.2	Variant Model Differences	7
1.3	Device Modifications	7
1.4	Equipment Under Test.....	7
1.5	Support Equipments	7
1.6	External I/O Cabling	8
1.7	EUT Operating Mode(s)	8
1.8	Configuration.....	9
1.9	Remarks when standards applied	10
1.10	Calibration Details of Equipment Used for Measurement.....	10
1.11	Test Facility	10
1.12	Laboratory Accreditations and Listings	10
2.0	Test Regulations.....	11
2.1	Conducted Emissions at Mains Power Ports	12
2.2	Radiated Electric Field Emissions(Below 1 GHz)	13
2.3	Radiated Electric Field Emissions(Above 1 GHz)	14
APPENDIX A – TEST DATA.....		15
Conducted Emissions at Mains Power Ports.....		15
Radiated Electric Field Emissions(Below 1 GHz)		17
Radiated Electric Field Emissions(Above 1 GHz)		19
Test Setup Photos and Configuration		20
Conducted Emissions at Mains Power Ports.....		20
Radiated Electric Field Emissions(Below 1 GHz)		21
Radiated Electric Field Emissions(Above 1 GHz)		22
EUT External Photographs		23
EUT Internal Photographs		24

This report shall not be reproduced except in full, without the written approval of KES Co., Ltd.
The results shown in this test report refer only to the sample(s) tested unless otherwise stated.
The authenticity of the test report, contact kes@kes.co.kr



KES Co., Ltd.

3701, 40, Simin-daero 365beon-gil,
Dongan-gu, Anyang-si, Gyeonggi-do, 14057, Korea
Tel: +82-31-425-6200 / Fax: +82-31-424-0450
www.kes.co.kr

Report No.:

KES-EM-21T1133-R1

Page (4) of (33)

1.0 General Product Description

Main Specifications of EUT are:

Video	
Imaging Device	1/2.8" CMOS
Resolution	1920x1080, 1280x1024, 1280x960, 1280x720, 1024x768, 800x600, 800x448, 720x576, 720x480, 640x480, 640x360, 320x240
Max. Framerate	H.265/H.264: Max. 60fps/50fps(60Hz/50Hz) MJPEG: Max. 30fps/25fps(60Hz/50Hz)
NETD	None
Pixel Size	None
Min. Illumination	Color: 0.05Lux(F1.6, 1/30sec) BW: 0.005Lux(F1.6, 1/30sec)
Video Out	None
Video Transmission Distance	None
Lens	
Focal Length (Zoom Ratio)	4.44~142.6mm(32x) zoom
Max. Aperture Ratio	F1.6(Wide)~F4.4(Tele)
Angular Field of View	H: 64.66°(Wide)~2.29°(Tele) / V: 38.08°(Wide)~1.30°(Tele)
Min. Object Distance	Wide: 1.5m(4.92ft), Tele: 2m(6.56ft)
Focus Control	Oneshot AF
Lens Type	DC auto iris
Mount Type	None
Optional Lens	None
Pan / Tilt / Rotate	
Pan / Tilt / Rotate Range	None
Pan Range	360° Endless
Pan Speed	Preset: 700°/sec, Manual: 0.024°/sec~200°/sec
Tilt Range	105°(-15°~90°)
Tilt Speed	Preset: 300°/sec, Manual: 0.024°/sec~200°/sec
Rotate Range	None
Sequence	Preset(300ea), Swing, Group(6ea), Trace, Tour, Auto Run, Schedule
Preset Accuracy	±0.2°

This report shall not be reproduced except in full, without the written approval of KES Co., Ltd.
The results shown in this test report refer only to the sample(s) tested unless otherwise stated.
The authenticity of the test report, contact kes@kes.co.kr

**KES Co., Ltd.**

3701, 40, Simin-daero 365beon-gil,
Dongan-gu, Anyang-si, Gyeonggi-do, 14057, Korea
Tel: +82-31-425-6200 / Fax: +82-31-424-0450
www.kes.co.kr

Report No.:

KES-EM-21T1133-R1

Page (5) of (33)

Operational	
Camera Title	Displayed up to 85 characters
Direction Indicator	Support
Day & Night	Auto(ICR)
Backlight Compensation	BLC, HLC, WDR, SSDR
Wide Dynamic Range	120dB
Digital Noise Reduction	SSNRV
Digital Image Stabilization	Support(built-in gyro sensor)
Defog	Support
Motion Detection	8ea, 8point polygonal zones
Privacy Masking	32ea, Quadrange Support - Color: Grey/Green/Red/Blue/Black/White - Solid/Mosaic
Gain Control	OFF/ LOW/ MID/ HIGH
White Balance	ATW / AWC / Manual / Indoor / Outdoor / Mercury / Sodium
LDC	None
Electronic Shutter Speed	Minimum / Maximum / Anti flicker (2~1/12,000sec)
Digital PTZ	None
Video Rotation	Flip, Mirror
Analytics	Directional detection, Motion detection, Enter/Exit, Tampering, Virtual line * Audio detection(with NW I/O Box)
Business Intelligence	None
Serial Interface	None
Alarm I/O	None
Alarm Triggers	Analytics, Network disconnect * Alarm input(with NW I/O Box)
Alarm Events	File upload via FTP and e-mail Notification via e-mail SD/SDHC/SDXC or NAS recording at event triggers PTZ Preset Handover * Alarm output(with NW I/O Box)
Audio In	None
Audio Out	None
IR Viewable Length	None
IR Illuminator (Optional)	None
Water Removal	None
Auto Tracking	None
Coaxial Protocol	None
Color Palettes	None
Radiometry	
Temperature detect range	None
Temperature accuracy	None
Temperature detection	None
Additional	None

This report shall not be reproduced except in full, without the written approval of KES Co., Ltd.
The results shown in this test report refer only to the sample(s) tested unless otherwise stated.
The authenticity of the test report, contact kes@kes.co.kr



KES Co., Ltd.

3701, 40, Simin-daero 365beon-gil,
Dongan-gu, Anyang-si, Gyeonggi-do, 14057, Korea
Tel: +82-31-425-6200 / Fax: +82-31-424-0450
www.kes.co.kr

Report No.:

KES-EM-21T1133-R1

Page (6) of (33)

Network	
Ethernet	Metal-shielded RJ-45(10/100BASE-T)
Video Compression	H.265/H.264,MJPEG
Audio Compression	None
Smart Codec	Manual(5ea area), WiseStreamII
Video Quality Adjustment	H.264/H.265: Target bitrate level control MJPEG: Target bitrate level control
Bitrate Control	H.264/H.265: CBR or VBR MJPEG: VBR
Streaming	Unicast(20 users) / Multicast (128 user)Multiple streaming(Up to 10 profiles)
Protocol	IPv4, IPv6, TCP/IP, UDP/IP, RTP(UDP), RTP(TCP), RTCP,RTSP, NTP, HTTP, HTTPS, SSL/TLS, DHCP, FTP, SMTP, ICMP, IGMP, SNMPv1/v2c/v3(MIB-2), ARP, DNS, DDNS, QoS, PIM-SM, UPnP, Bonjour, LLDP, SRTP
Security	HTTPS(SSL) Login Authentication Digest Login Authentication IP Address Filtering User access log 802.1X Authentication(EAP-TLS, EAP-LEAP)
Application Programming Interface	ONVIF Profile S/G/T SUNAPI(HTTP API) Wisenet open platform
General	
Webpage Language	English, Korean, Chinese, French, Italian, Spanish, German, Japanese, Russian, Swedish, Portuguese, Czech, Polish, Turkish, Dutch, Hungarian, Greek
Web Viewer	None
Edge Storage	Micro SD/SDHC/SDXC 1slot 256GB
Memory	1024MB RAM, 256MB Flash
Environmental & Electrical	
Operating Temperature / Humidity	Normal : -35°C~+55°C(-31°F ~ +131°F) / Intermittent : -40°C~+60°C(-40°F ~ +140°F) * Start up should be done at above -25°C Less than 95% RH(Non-condensing)
Storage Temperature / Humidity	-50°C~+60°C (-58°F~+140°F) / Less than 95% RH(Non-condensing)
Certification	IP66/IP67, IK10, NEMA4X
Input Voltage	PoE+(IEEE802.3at, Class4)
Power Consumption(TBD)	Max. 23W, Typ. 14W (TBD)
Mechanical	
Color / Material	Silver / Stainless(SUS316L)
RAL Code	None
Product dimensions / weight	Ø227x299.2mm(8.94x11.78"), 5.4 kg(11.93 lb)
DORI (EN62676-4 standard)	
Detect (25PPM/ 8PPF)	Wide: 64.2m(199.1ft) / Tele: 1921.3m(6303.4ft)
Observe (63PPM/ 19PPF)	Wide: 24.3m(79.6ft) / Tele: 768.5m(2521.4ft)
Recognize (125PPM/ 38PPF)	Wide: 12.1m(39.8ft) / Tele: 384.3m(1260.7ft)
Identify (250PPM/ 76PPF)	Wide: 6.1m(19.9ft) / Tele: 192.1m(630.3ft)

This report shall not be reproduced except in full, without the written approval of KES Co., Ltd.
The results shown in this test report refer only to the sample(s) tested unless otherwise stated.
The authenticity of the test report, contact kes@kes.co.kr



1.1 Test Voltage & Frequency

Unless indicated otherwise on the individual data sheet or test results, the test voltage and frequency was as indicated below.

☒ AC 120 V, 60 Hz (PoE Adapter Input Power)

1.2 Variant Model Differences

Not applicable

1.3 Device Modifications

Not applicable

1.4 Equipment Under Test

Description	Model Number	Serial Number	Manufacturer	Remarks
NETWORK CAMERA	QNP-6320HS	-	HANWHA VISION VIETNAM COMPANY LIMITED	EUT

1.5 Support Equipments

Description	Model Number	Serial Number	Manufacturer	Remarks
PoE INJECTOR	GS728TPP	-	NETGEAR	-
Notebook	LG15N54	411NZJV044052	LG Electronics	-
Notebook Adapter	PA-1900-14	-	LITE-ON TECHNOLOGY (CHANGZHOU)CO., LTD	-
Micro SD Card	-	-	Sandisk	8 GB



1.6 External I/O Cabling

Start		END		Cable Spec.	
Description	I/O Port	Description	I/O Port	Length	Shield
NETWORK CAMERA (EUT)	RJ-45	PoE INJECTOR	RJ-45	3.0	U
	Micro SD Slot	Micro SD Card	Micro SD Slot	-	-
Notebook	RJ-45	PoE INJECTOR	RJ-45	2.0	U
	DC Jack	Notebook Adapter	DC Jack	1.6	U

* Unshielded=U, Shielded=S

1.7 EUT Operating Mode(s)

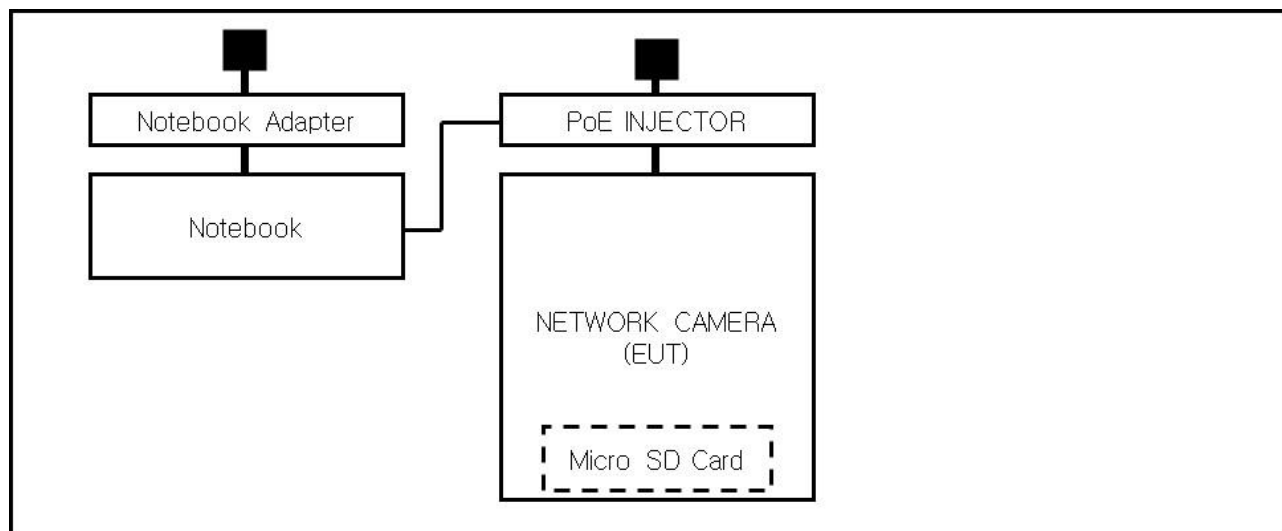
Test Mode	operating
Operating Mode	EUT Monitoring, Ping Test

EUT Test operating S/W		
Name	Version	Manufacture Company
Web Viewer	-	Hanwha Vision Co., Ltd

1.8 Configuration

■ AC Main

□ DC Main



1.9 Remarks when standards applied

N/A







1.10 Calibration Details of Equipment Used for Measurement

Test equipment and test accessories are calibrated on regular basis. The maximum time between calibrations is one year or what is recommended by the manufacturer, whichever is less.

1.11 Test Facility

The measurement facility is located at 473-21, Gayeo-ro, Yeosu-si, Gyeonggi-do, 12658, Korea, Republic of. The sites are constructed in conformance with the requirements of ANSI C63.4a-2017 and CISPR 16-1-4:2019

1.12 Laboratory Accreditations and Listings

Country	Agency	Scope of Accreditation	Logo
KOREA	RRA	EMI (3 m & 10 m Semi-Anechoic Chamber and conducted test site) EMS (ESD, RS, EFT/Burst, Surge, CS, Magnetic, Dips and interruptions)	 KR0100
International	KOLAS	EMI (3 m & 10 m Semi-Anechoic Chamber and conducted test site) EMS (ESD, RS, EFT/Burst, Surge, CS, Magnetic, Dips and interruptions)	 KT489
USA	FCC	3 m & 10 m Semi-Anechoic Chamber Conducted test site to perform FCC Part 15/18 measurements.	 KR0100
Canada	ISED	3 m & 10 m Semi-Anechoic Chamber and Conducted test site	 23298
JAPAN	VCCI	EMI (3 m & 10 m Semi-Anechoic Chamber and conducted test site)	 C-20136, T-20137, R-20181, G-20176
Europe	TÜV SÜD	EMI (3 m & 10 m Semi-Anechoic Chamber and conducted test site) EMS (ESD, RS, EFT/Burst, Surge, CS, Magnetic, Dips and interruptions)	 CARAT 001633 0004



2.0 Test Regulations

The emissions tests were performed according to following regulations:

☒ **47 CFR Part 15, Subpart B**

☐ CISPR 22:2009 +A1:2010

☐ Class A

☐ Class B

☒ ANSI C63.4a-2017

☒ Class A

☐ Class B

☒ **IC Regulation ICES-003 Issue 7**

☐ CAN/CSA-CISPR 32:17

☐ Class A

☐ Class B

☒ ANSI C63.4a-2017

☒ Class A

☐ Class B

**KES Co., Ltd.**

3701, 40, Simin-daero 365beon-gil,
Dongan-gu, Anyang-si, Gyeonggi-do, 14057, Korea
Tel: +82-31-425-6200 / Fax: +82-31-424-0450
www.kes.co.kr

Report No.:

KES-EM-21T1133-R1

Page (12) of (33)

2.1 Conducted Emissions at Mains Power Ports

Test Date

Nov. 12, 2021

Test Location

Electro wave Shieldroom #6

Test Equipment

Used	Description	Model Number	Manufacturer	Serial Number	Cal. Due
<input checked="" type="checkbox"/>	EMI Test S/W	EMC32	R & S	9.12.00	-
<input checked="" type="checkbox"/>	EMI TEST RECEIVER	ESR3	R & S	101783	01, 15, 2022
<input checked="" type="checkbox"/>	LISN	ENV216	R & S	101787	12, 29, 2021
<input checked="" type="checkbox"/>	LISN	ESH2-Z5	R & S	100450	12, 29, 2021
<input checked="" type="checkbox"/>	PULSE LIMITER	ESH3-Z2	R & S	101915	12, 29, 2021

Test Conditions

Temperature: (22,8 ± 0,1) °C

Relative Humidity: (43,8 ± 0,1) % R.H.

Frequency Range of Measurement

150 kHz to 30 MHz

Instrument Settings

IF Band Width: 9 kHz

Test Results

The requirements are:

- ☒ PASS
☐ NOT PASS
☐ NOT APPLICABLE

RemarksSee Appendix A for test data.

This report shall not be reproduced except in full, without the written approval of KES Co., Ltd.
The results shown in this test report refer only to the sample(s) tested unless otherwise stated.
The authenticity of the test report, contact kes@kes.co.kr

**KES Co., Ltd.**

3701, 40, Simin-daero 365beon-gil,
Dongan-gu, Anyang-si, Gyeonggi-do, 14057, Korea
Tel: +82-31-425-6200 / Fax: +82-31-424-0450
www.kes.co.kr

Report No.:

KES-EM-21T1133-R1

Page (13) of (33)

2.2 Radiated Electric Field Emissions(Below 1 GHz)

Test Date

Nov. 11, 2021

Test Location☐ OPEN AREA TEST SITE #2☒ SEMI ANECHOIC CHAMBER #4(10m)**Test Equipment**

Used	Description	Model Number	Manufacturer	Serial Number	Cal. Due
<input checked="" type="checkbox"/>	EMI Test S/W	EP5/RE	TOYO Corporation	6.0.0	-
<input checked="" type="checkbox"/>	EMI TEST RECEIVER	ESU26	R & S	100551	04, 01, 2022
<input checked="" type="checkbox"/>	AMPLIFIER	SCU 01	R & S	100603	11, 24, 2022
<input checked="" type="checkbox"/>	TRILOG-BROADBAND ANTENNA	VULB9163	Schwarzbeck	715	12, 08, 2022
<input checked="" type="checkbox"/>	ATTENUATOR	8491A	HP	32173	03, 10, 2022

Test Conditions

Temperature: (23,2 ± 0,2) °C

Relative Humidity: (44,9 ± 0,1) % R.H.

Frequency Range of Measurement

30 MHz to 1 GHz

Instrument Settings

IF Band Width: 120 kHz

Test Results

The requirements are:

- ☒ PASS
☐ NOT PASS
☐ NOT APPLICABLE

RemarksSee Appendix A for test data.

This report shall not be reproduced except in full, without the written approval of KES Co., Ltd.

The results shown in this test report refer only to the sample(s) tested unless otherwise stated.

The authenticity of the test report, contact kes@kes.co.kr

**KES Co., Ltd.**

3701, 40, Simin-daero 365beon-gil,
Dongan-gu, Anyang-si, Gyeonggi-do, 14057, Korea
Tel: +82-31-425-6200 / Fax: +82-31-424-0450
www.kes.co.kr

Report No.:

KES-EM-21T1133-R1

Page (14) of (33)

2.3 Radiated Electric Field Emissions(Above 1 GHz)

Test Date

Nov. 12, 2021

Test Location

SEMI ANECHOIC CHAMBER #5

Test Equipment

Used	Description	Model Number	Manufacturer	Serial Number	Cal. Due
<input checked="" type="checkbox"/>	EMI Test S/W	EP5/RE	TOYO Corporation	6.0.120	-
<input checked="" type="checkbox"/>	EMI TEST RECEIVER	ESU26	Rohde & Schwarz	100552	04, 01, 2022
<input checked="" type="checkbox"/>	HORN ANTENNA	BBHA 9120D	SCHWARZBECK	9120D-1802	12, 14, 2021
<input checked="" type="checkbox"/>	PREAMPLIFIER	8449B	HP	3008A00538	06, 21, 2022

Test Conditions

Temperature: (23,2 ± 0,1) °C

Relative Humidity: (47,4 ± 0,1) % R.H.

Frequency Range of Measurement

1 GHz to 5 GHz

Instrument Settings

IF Band Width: 1 MHz

Test Results

The requirements are:

☒ PASS☐ NOT PASS☐ NOT APPLICABLE**Remarks**See Appendix A for test data.

This report shall not be reproduced except in full, without the written approval of KES Co., Ltd.

The results shown in this test report refer only to the sample(s) tested unless otherwise stated.

The authenticity of the test report, contact kes@kes.co.kr

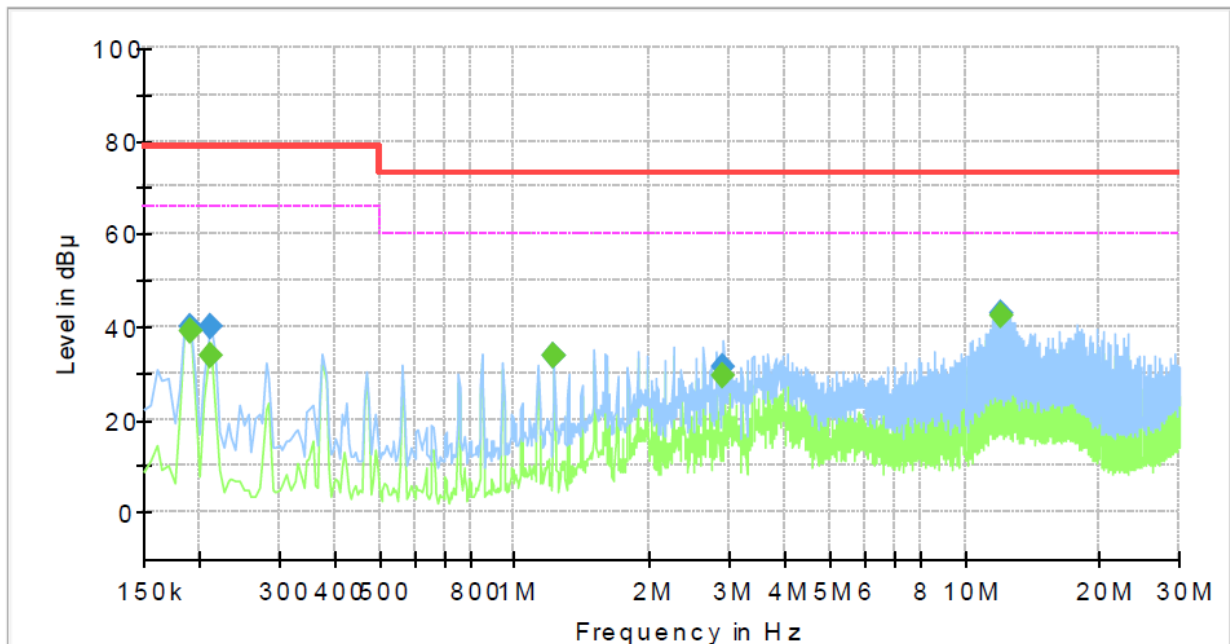
APPENDIX A – TEST DATA

Conducted Emissions at Mains Power Ports

HOT LINE

Common Information

Test Description: Conducted Emission
Model No.: QNP-6320HS
Phase: L1
Mode:
Operator Name: KES



Final Result

Frequency (MHz)	QuasiPeak (dBμV)	CAverage (dBμV)	Limit (dBμV)	Margin (dB)	Meas. Time (ms)	Bandwidth (kHz)	Line	Corr. (dB)
0.190000	---	38.88	66.00	27.12	1000.0	9.000	L1	19.5
0.190000	39.83	---	79.00	39.17	1000.0	9.000	L1	19.5
0.210000	---	33.56	66.00	32.44	1000.0	9.000	L1	19.5
0.210000	39.83	---	79.00	39.17	1000.0	9.000	L1	19.5
1.220000	---	33.81	60.00	26.19	1000.0	9.000	L1	20.2
1.220000	33.90	---	73.00	39.10	1000.0	9.000	L1	20.2
2.915000	---	29.35	60.00	30.65	1000.0	9.000	L1	20.2
2.915000	31.41	---	73.00	41.59	1000.0	9.000	L1	20.2
12.120000	---	42.55	60.00	17.45	1000.0	9.000	L1	20.0
12.120000	42.92	---	73.00	30.08	1000.0	9.000	L1	20.0

This report shall not be reproduced except in full, without the written approval of KES Co., Ltd.

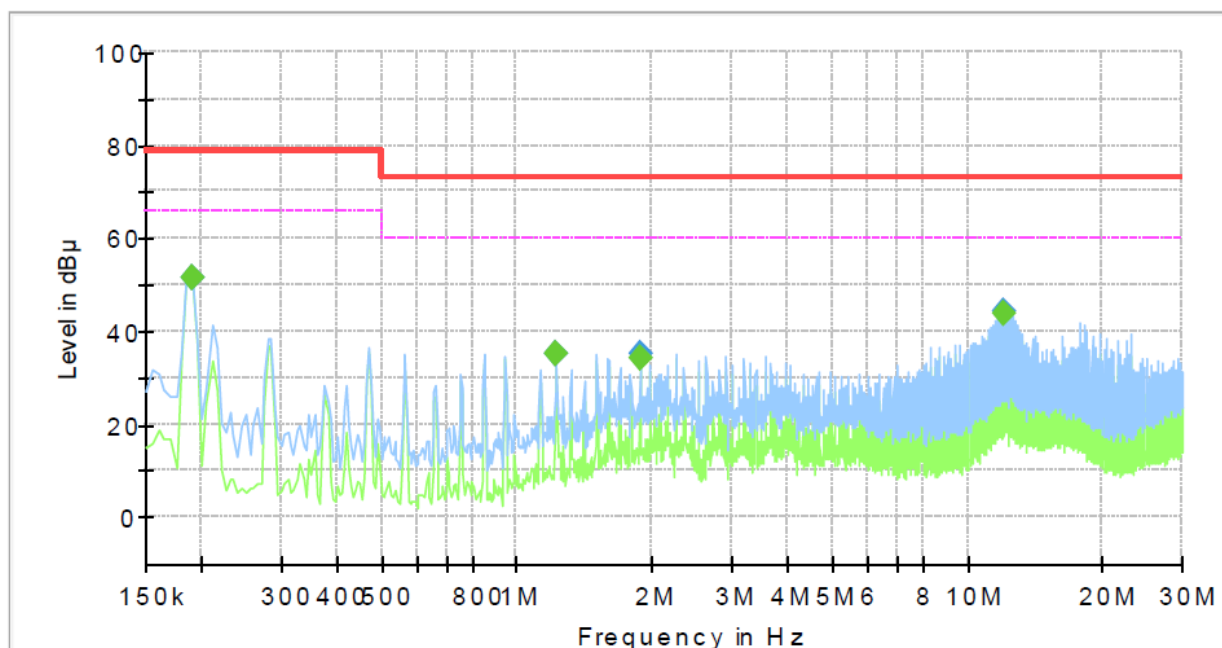
The results shown in this test report refer only to the sample(s) tested unless otherwise stated.

The authenticity of the test report, contact kes@kes.co.kr

NEUTRAL LINE

Common Information

Test Description:	Conducted Emission
Model No.:	QNP-6320HS
Phase:	N
Mode:	
Operator Name:	KES



Final Result

Frequency (MHz)	QuasiPeak (dBμV)	CAverage (dBμV)	Limit (dBμV)	Margin (dB)	Meas. Time (ms)	Bandwidth (kHz)	Line	Corr. (dB)
0.190000	---	51.26	66.00	14.74	1000.0	9.000	N	19.4
0.190000	51.43	---	79.00	27.57	1000.0	9.000	N	19.4
1.220000	---	35.07	60.00	24.93	1000.0	9.000	N	20.1
1.220000	35.11	---	73.00	37.89	1000.0	9.000	N	20.1
1.880000	---	34.35	60.00	25.65	1000.0	9.000	N	20.3
1.880000	35.06	---	73.00	37.94	1000.0	9.000	N	20.3
12.120000	---	43.69	60.00	16.31	1000.0	9.000	N	20.0
12.120000	44.10	---	73.00	28.90	1000.0	9.000	N	20.0

◆ Calculation

QuasiPeak[dBuV] / CAverage [dBuV] = Reading Value[dBuV] + Corr. [dB]

QuasiPeak / CAverage : The Final Value

Reading Value : Not shown in the table.

Corr. : Correction values (LISN FACTOR + (Cable Loss + Pulse Limiter FACTOR))



KES Co., Ltd.

3701, 40, Simin-daero 365beon-gil,
Dongan-gu, Anyang-si, Gyeonggi-do, 14057, Korea
Tel: +82-31-425-6200 / Fax: +82-31-424-0450
www.kes.co.kr

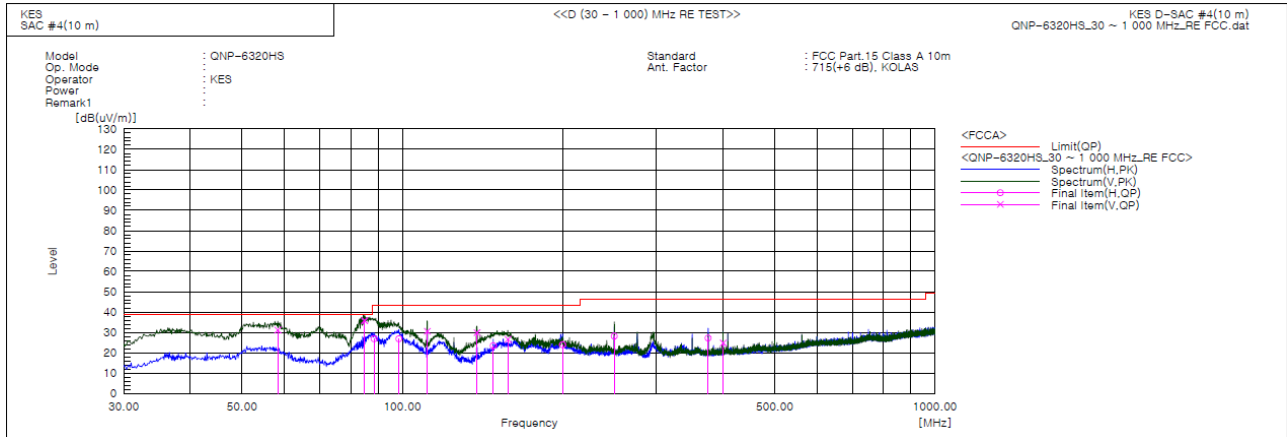
Report No.:

KES-EM-21T1133-R1

Page (17) of (33)

Radiated Electric Field Emissions(Below 1 GHz)

- 47 CFR Part 15, Subpart B



Final Result

No.	Frequency [MHz]	(P)	Reading QP [dB(uV)]	c.f [dB(1/m)]	Result QP [dB(uV/m)]	Limit QP [dB(uV/m)]	Margin QP [dB]	Height [cm]	Angle [deg]	Remark
1	58.389	V	53.0	-21.8	31.2	39.0	7.8	145.0	98.0	
2	84.926	V	62.1	-26.3	35.8	39.0	3.2	155.0	68.0	
3	88.482	H	51.5	-24.7	26.8	43.5	16.7	368.0	348.0	
4	98.531	H	49.5	-22.7	26.8	43.5	16.7	338.0	6.0	
5	111.372	V	52.9	-22.4	30.5	43.5	13.0	106.0	256.0	
6	138.088	V	55.3	-25.4	29.9	43.5	13.6	147.0	317.0	
7	148.139	H	48.6	-25.2	23.4	43.5	20.1	356.0	146.0	
8	157.815	V	51.3	-24.7	26.6	43.5	16.9	151.0	34.0	
9	199.982	H	44.7	-20.8	23.9	43.5	19.6	389.0	241.0	
10	249.982	H	47.3	-19.2	28.1	46.5	18.4	378.0	67.0	
11	374.989	H	42.1	-14.9	27.2	46.5	19.3	398.0	234.0	
12	400.102	V	39.1	-14.3	24.8	46.5	21.7	126.0	12.0	

This report shall not be reproduced except in full, without the written approval of KES Co., Ltd.

The results shown in this test report refer only to the sample(s) tested unless otherwise stated.

The authenticity of the test report, contact kes@kes.co.kr



KES Co., Ltd.

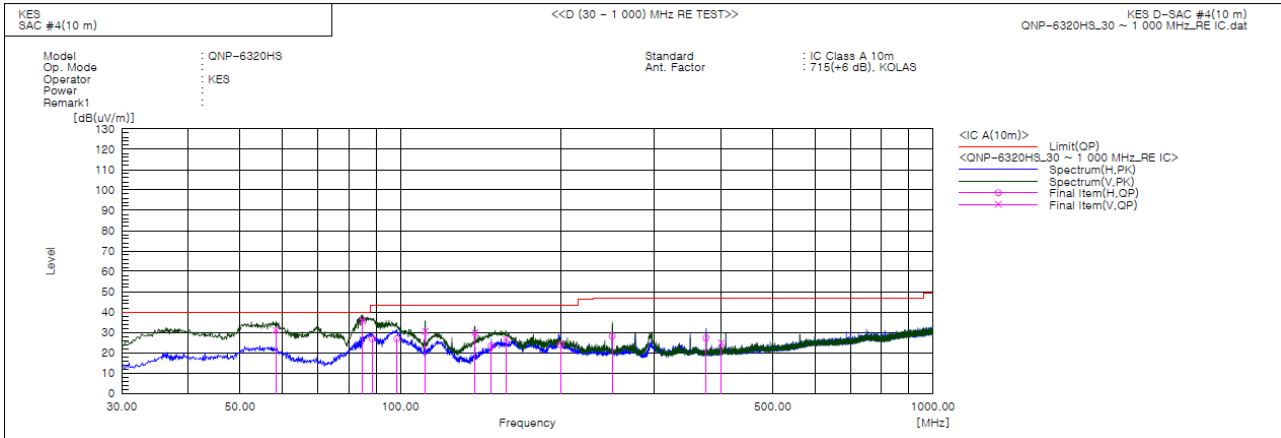
3701, 40, Simin-daero 365beon-gil,
Dongan-gu, Anyang-si, Gyeonggi-do, 14057, Korea
Tel: +82-31-425-6200 / Fax: +82-31-424-0450
www.kes.co.kr

Report No.:

KES-EM-21T1133-R1

Page (18) of (33)

- IC Regulation ICES-003 Issue 7



Final Result

No.	Frequency [MHz]	(P)	Reading QP [dB(uV)]	c.f [dB(1/m)]	Result QP [dB(uV/m)]	Limit QP [dB(uV/m)]	Margin QP [dB]	Height [cm]	Angle [deg]	Remark
1	58.389	V	53.0	-21.8	31.2	40.0	8.8	145.0	98.0	
2	84.926	V	62.1	-26.3	35.8	40.0	4.2	155.0	68.0	
3	88.482	H	51.5	-24.7	26.8	43.5	16.7	368.0	348.0	
4	98.531	H	49.5	-22.7	26.8	43.5	16.7	338.0	6.0	
5	111.372	V	52.9	-22.4	30.5	43.5	13.0	106.0	256.0	
6	138.088	V	55.3	-25.4	29.9	43.5	13.6	147.0	317.0	
7	148.139	H	48.6	-25.2	23.4	43.5	20.1	356.0	146.0	
8	157.815	V	51.3	-24.7	26.6	43.5	16.9	151.0	34.0	
9	199.982	H	44.7	-20.8	23.9	43.5	19.6	389.0	241.0	
10	249.982	H	47.3	-19.2	28.1	47.0	18.9	378.0	67.0	
11	374.989	H	42.1	-14.9	27.2	47.0	19.8	398.0	234.0	
12	400.102	V	39.1	-14.3	24.8	47.0	22.2	126.0	12.0	

◆ Calculation - SAC #4(10 m)

Result(QP) [dB(μV/m)] = (Reading(QP)[dB(μV)] + c.f[dB(1/m)])

Margin(QP)[dB] = Limit[dB(μV/m)] - Result(QP) [dB(μV/m)]

Reading(QP) : Reading value, Result(QP) : Reading value + Factor value

Limit(QP) : Limit value, c.f : (ANT Factor + Cable Loss - Preamp Factor), Margin: Margin value

This report shall not be reproduced except in full, without the written approval of KES Co., Ltd.

The results shown in this test report refer only to the sample(s) tested unless otherwise stated.

The authenticity of the test report, contact kes@kes.co.kr



KES Co., Ltd.

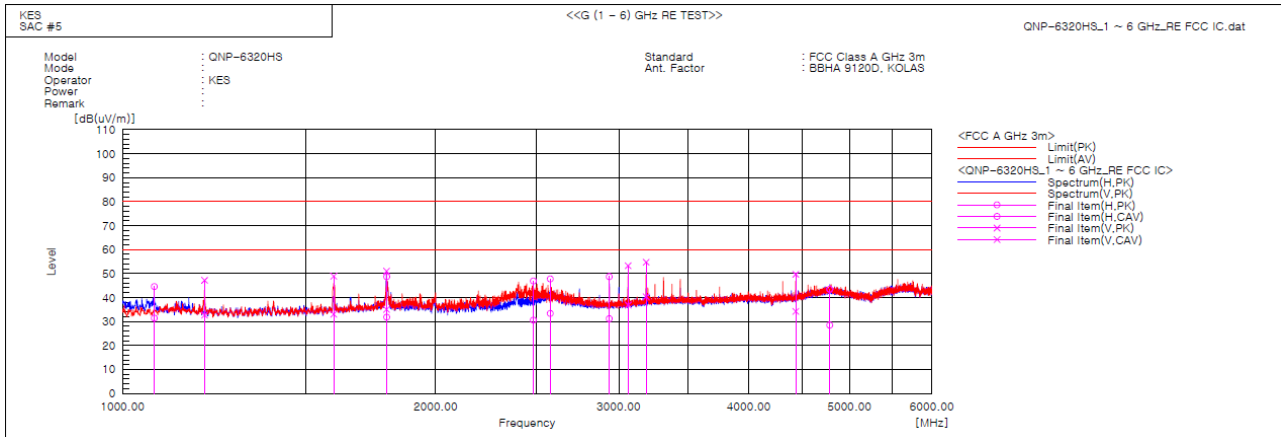
3701, 40, Simin-daero 365beon-gil,
Dongan-gu, Anyang-si, Gyeonggi-do, 14057, Korea
Tel: +82-31-425-6200 / Fax: +82-31-424-0450
www.kes.co.kr

Report No.:

KES-EM-21T1133-R1

Page (19) of (33)

Radiated Electric Field Emissions(Above 1 GHz)



Final Result

No.	Frequency [MHz]	(P)	Reading PK [dB(uV)]	Reading CAV [dB(uV)]	c.f [dB(1/m)]	Result PK [dB(uV/m)]	Result CAV [dB(uV/m)]	Limit PK [dB(uV/m)]	Limit AV [dB(uV/m)]	Margin PK [dB]	Margin CAV [dB]	Height [cm]	Angle [deg]	Remark
1	1073.179	H	52.1	38.9	-7.5	44.6	31.4	80.0	60.0	35.4	28.6	356.0	192.8	
2	1199.358	V	54.1	39.6	-6.9	47.2	32.7	80.0	60.0	32.8	27.3	116.0	203.4	
3	1596.284	V	53.8	38.0	-4.9	48.9	33.1	80.0	60.0	31.1	26.9	156.0	193.3	
4	1794.381	V	55.1	39.2	-4.1	51.0	35.1	80.0	60.0	29.0	24.9	151.0	167.2	
5	1794.839	H	52.8	35.9	-4.1	48.7	31.8	80.0	60.0	31.3	28.2	362.0	92.3	
6	2482.522	H	48.6	32.3	-1.7	46.9	30.6	80.0	60.0	33.1	29.4	351.0	134.9	
7	2578.166	H	49.1	34.7	-1.3	47.8	33.4	80.0	60.0	32.2	26.6	389.0	153.2	
8	2937.519	H	48.6	31.1	0.1	48.7	31.2	80.0	60.0	31.3	28.8	396.0	219.8	
9	3062.539	V	52.9	36.5	0.4	53.3	36.9	80.0	60.0	26.7	23.1	117.0	218.2	
10	3187.541	V	54.1	39.7	0.7	54.8	40.4	80.0	60.0	25.2	19.6	106.0	166.0	
11	4437.534	V	45.8	30.3	3.9	49.7	34.2	80.0	60.0	30.3	25.8	162.0	158.7	
12	4785.084	H	38.3	23.3	5.2	43.5	28.5	80.0	60.0	36.5	31.5	386.0	116.3	

◆ Calculation

Result(PK/CAV) [dB(uV/m)] = (Reading(PK/CAV)[dB(uV)] + c.f[dB(1/m)]

Margin(PK/CAV)[dB] = Limit[dB(uV/m)] - Result(PK/CAV) [dB(uV/m)]

Reading(PK/CAV) : Reading value, Result(PK/CAV) : Reading value + Factor value

Limit(QP) : Limit value, c.f : (ANT Factor + Cable Loss - Preamp Factor), Margin: Margin value

This report shall not be reproduced except in full, without the written approval of KES Co., Ltd.

The results shown in this test report refer only to the sample(s) tested unless otherwise stated.

The authenticity of the test report, contact kes@kes.co.kr

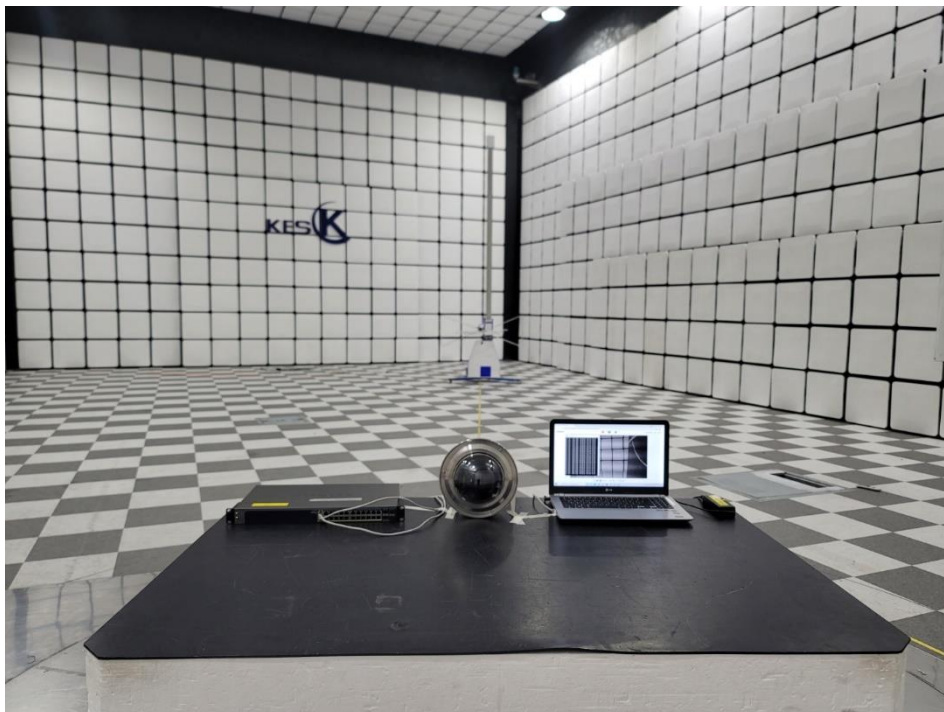
Test Setup Photos and Configuration

Conducted Emissions at Mains Power Ports



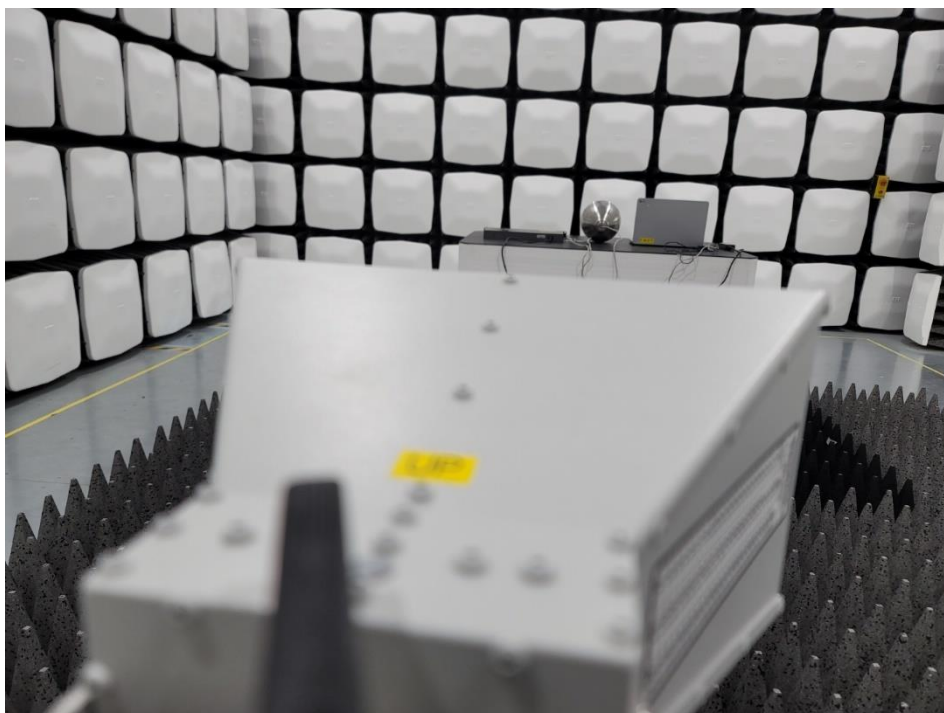
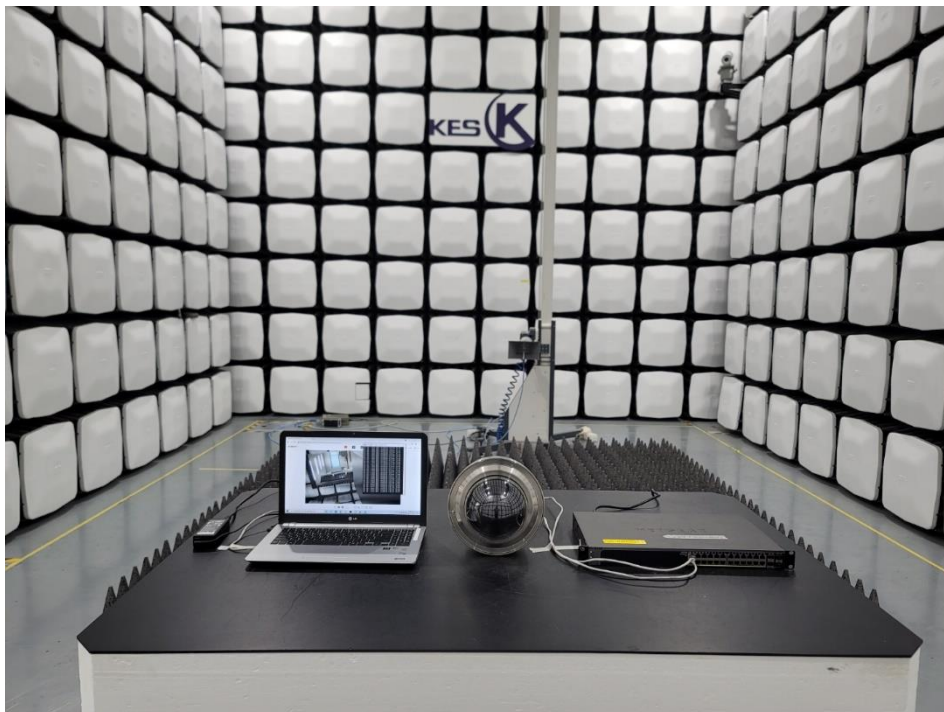
This report shall not be reproduced except in full, without the written approval of KES Co., Ltd.
The results shown in this test report refer only to the sample(s) tested unless otherwise stated.
The authenticity of the test report, contact kes@kes.co.kr

Radiated Electric Field Emissions(Below 1 GHz)



This report shall not be reproduced except in full, without the written approval of KES Co., Ltd.
The results shown in this test report refer only to the sample(s) tested unless otherwise stated.
The authenticity of the test report, contact kes@kes.co.kr

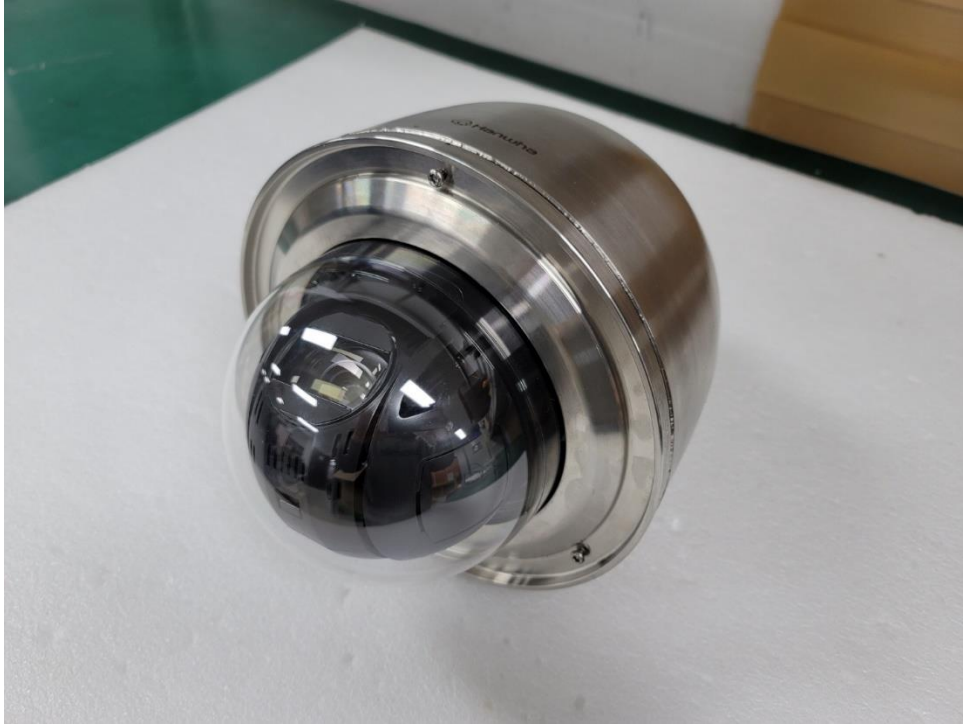
Radiated Electric Field Emissions(Above 1 GHz)



This report shall not be reproduced except in full, without the written approval of KES Co., Ltd.
The results shown in this test report refer only to the sample(s) tested unless otherwise stated.
The authenticity of the test report, contact kes@kes.co.kr

EUT External Photographs

(Top)



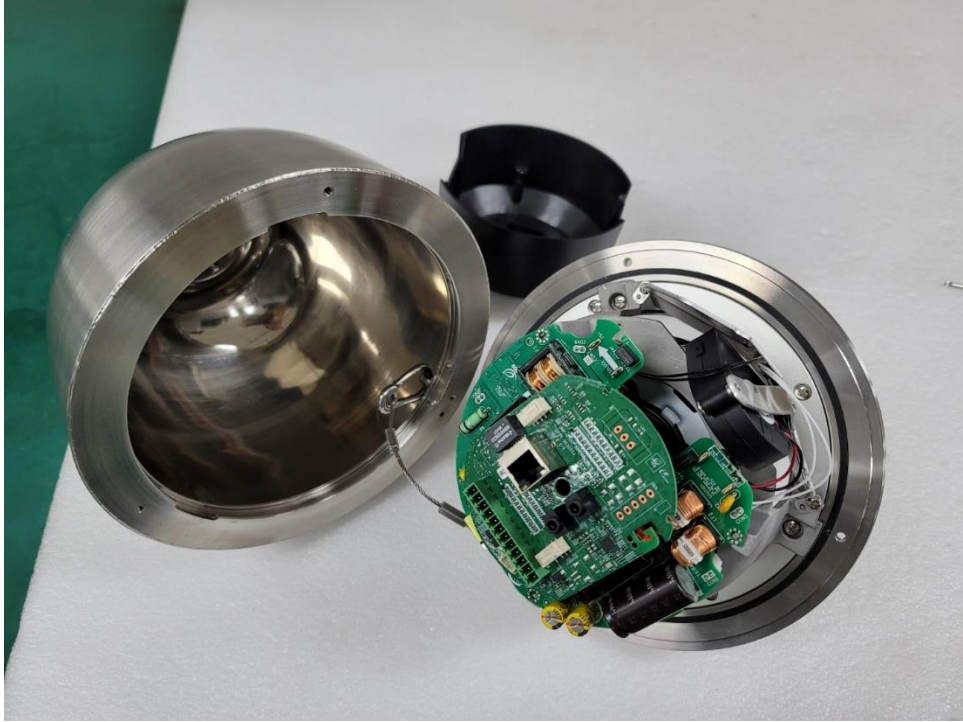
(Bottom)



This report shall not be reproduced except in full, without the written approval of KES Co., Ltd.
The results shown in this test report refer only to the sample(s) tested unless otherwise stated.
The authenticity of the test report, contact kes@kes.co.kr

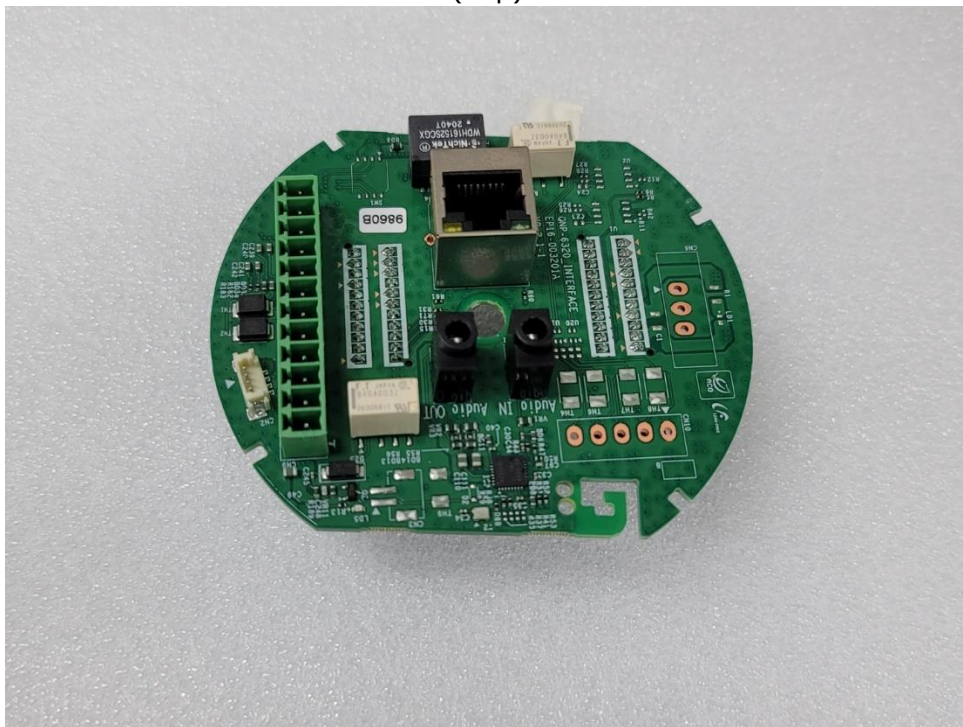
EUT Internal Photographs

(Internal View)

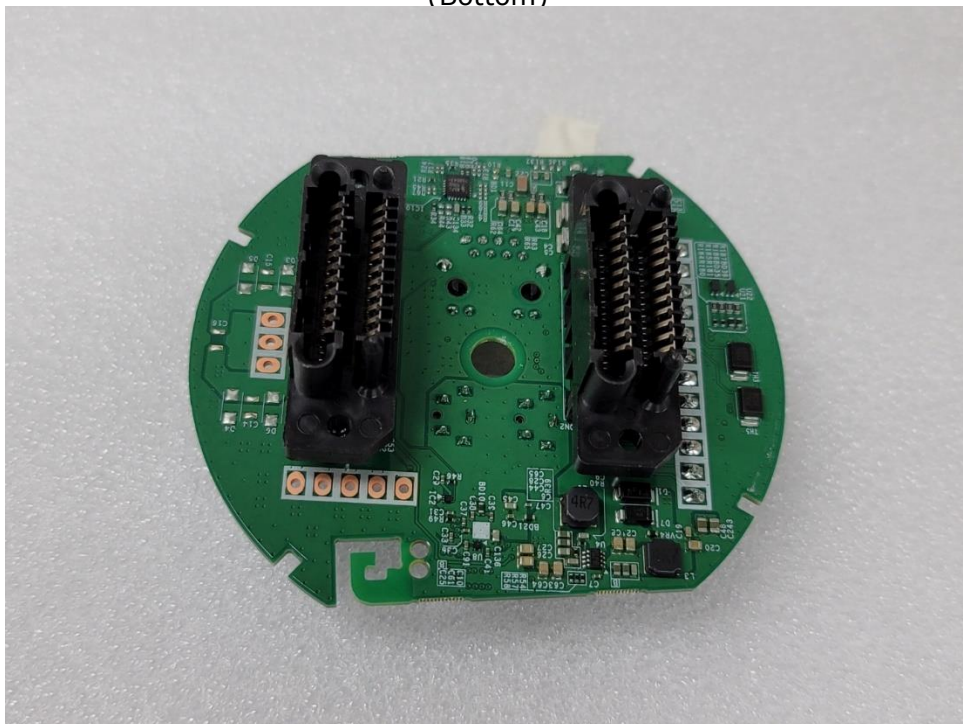


EUT Internal View – Board 1

(Top)



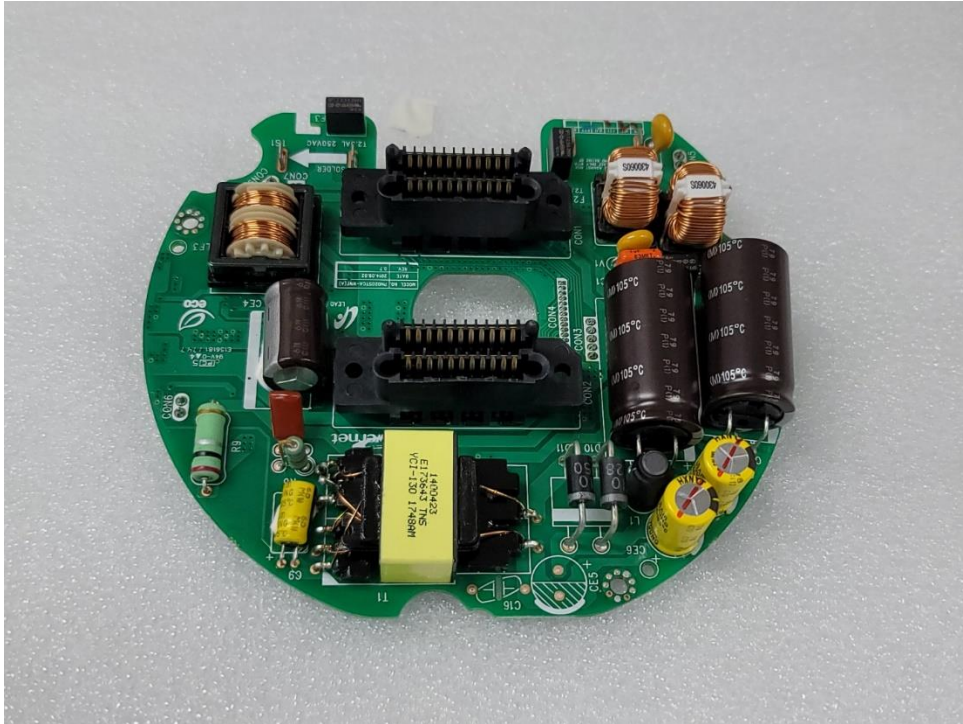
(Bottom)



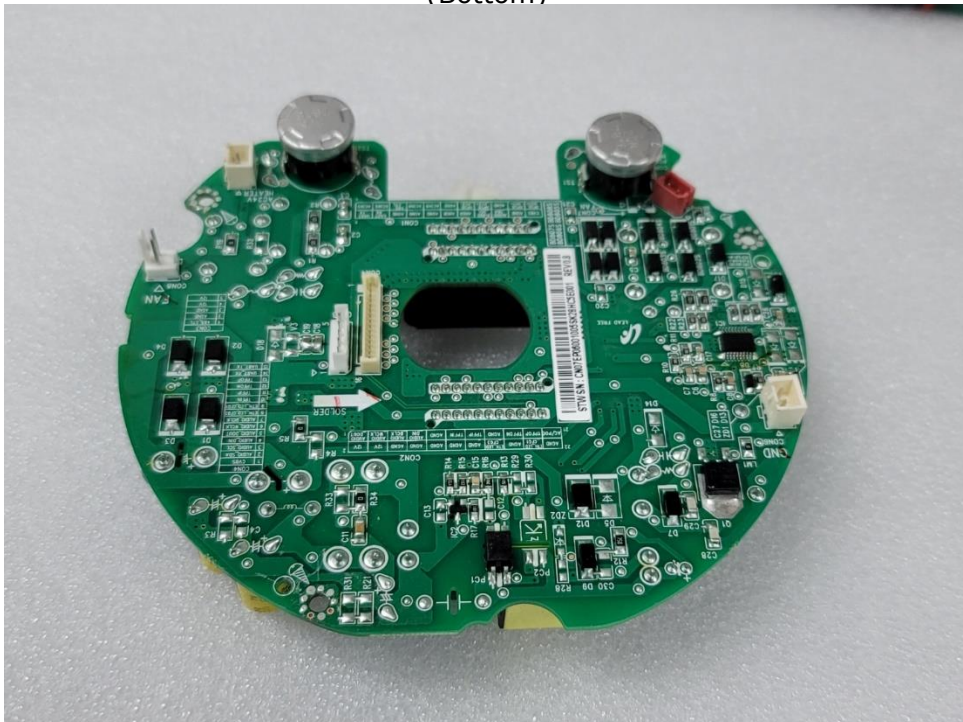
This report shall not be reproduced except in full, without the written approval of KES Co., Ltd.
The results shown in this test report refer only to the sample(s) tested unless otherwise stated.
The authenticity of the test report, contact kes@kes.co.kr

EUT Internal View – Board 2

(Top)



(Bottom)



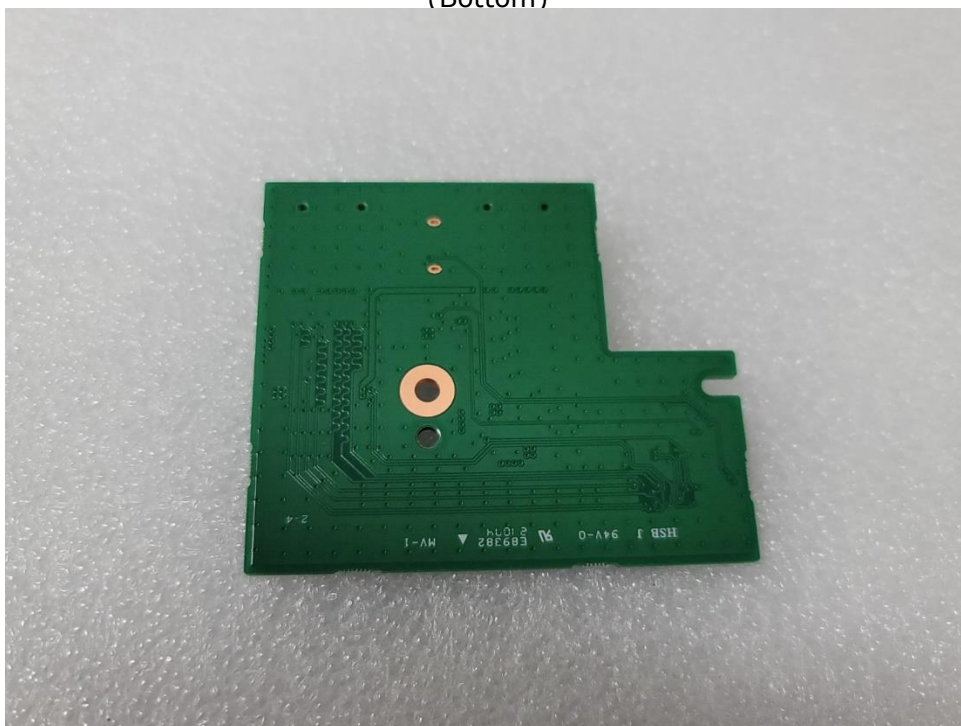
This report shall not be reproduced except in full, without the written approval of KES Co., Ltd.
The results shown in this test report refer only to the sample(s) tested unless otherwise stated.
The authenticity of the test report, contact kes@kes.co.kr

EUT Internal View – Board 3

(Top)



(Bottom)



This report shall not be reproduced except in full, without the written approval of KES Co., Ltd.
The results shown in this test report refer only to the sample(s) tested unless otherwise stated.
The authenticity of the test report, contact kes@kes.co.kr

EUT Internal View – Board 4

(Top)



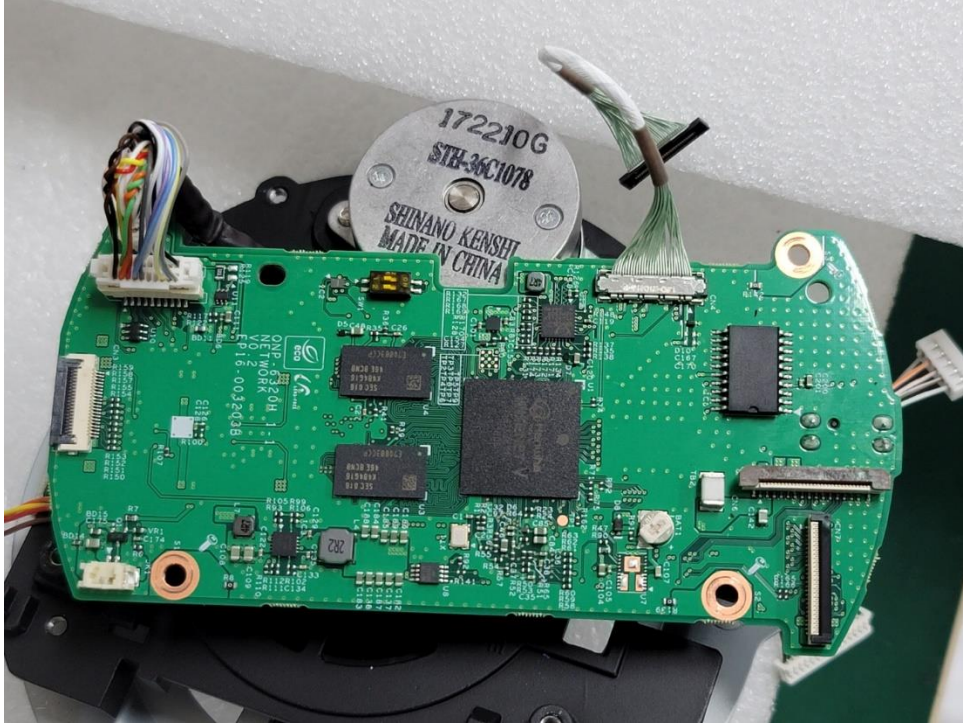
(Bottom)



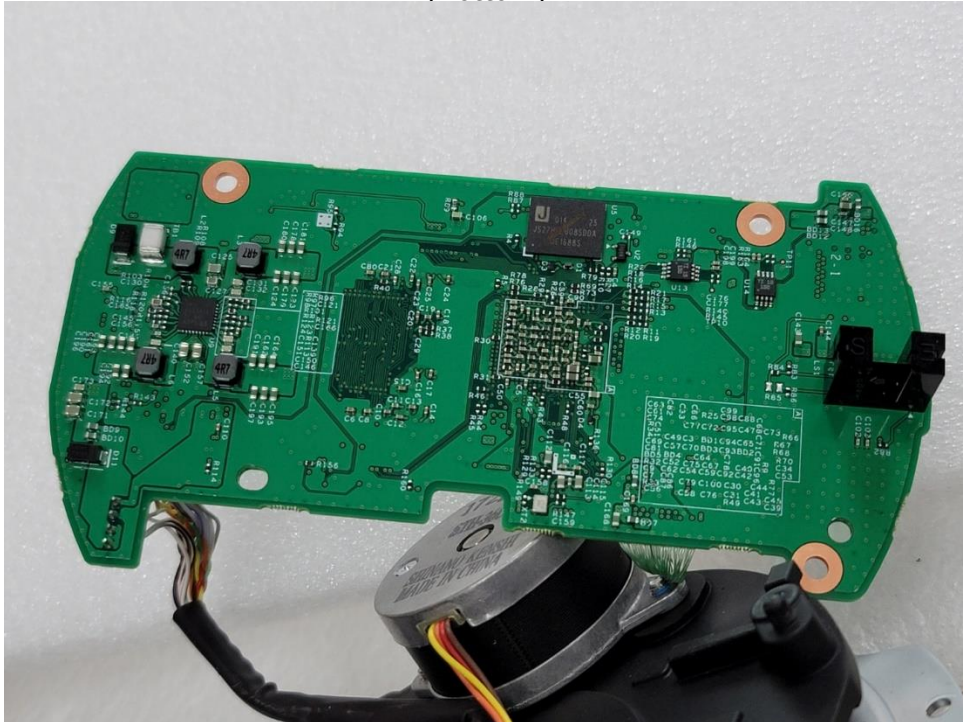
This report shall not be reproduced except in full, without the written approval of KES Co., Ltd.
The results shown in this test report refer only to the sample(s) tested unless otherwise stated.
The authenticity of the test report, contact kes@kes.co.kr

EUT Internal View – Board 5

(Top)



(Bottom)



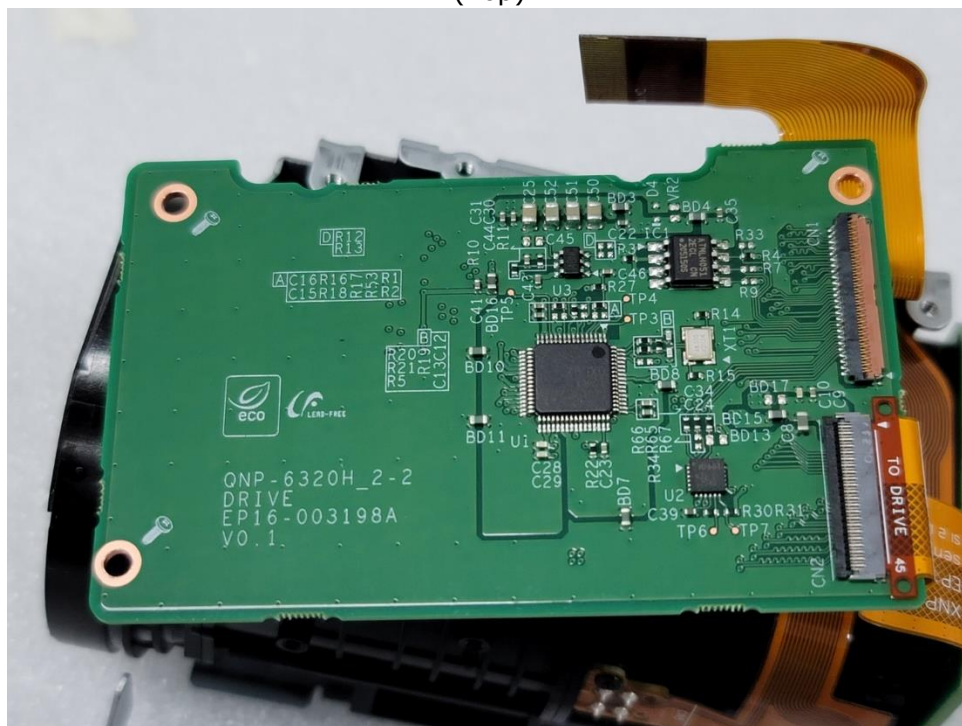
This report shall not be reproduced except in full, without the written approval of KES Co., Ltd.

The results shown in this test report refer only to the sample(s) tested unless otherwise stated.

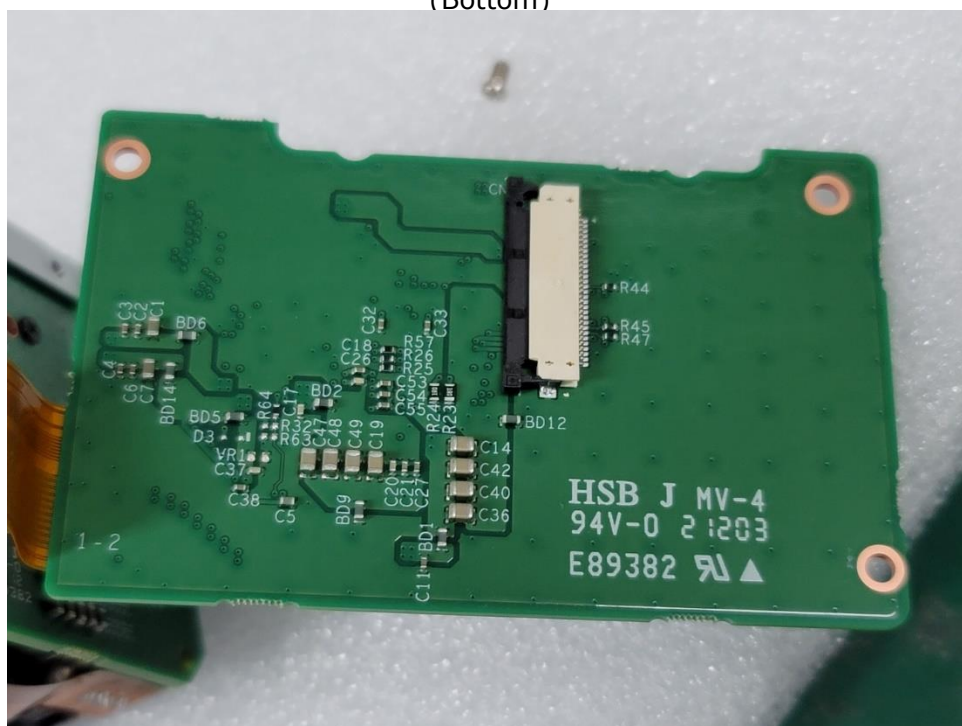
The authenticity of the test report, contact kes@kes.co.kr

EUT Internal View – Board 6

(Top)



(Bottom)



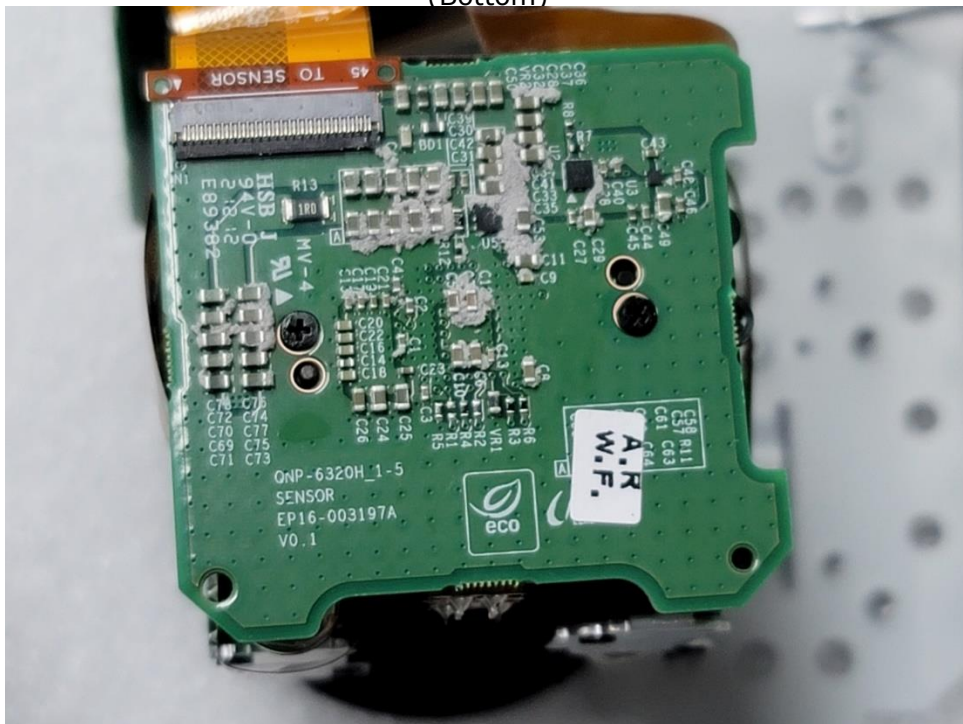
This report shall not be reproduced except in full, without the written approval of KES Co., Ltd.
The results shown in this test report refer only to the sample(s) tested unless otherwise stated.
The authenticity of the test report, contact kes@kes.co.kr

EUT Internal View – Lens Board

(Top)



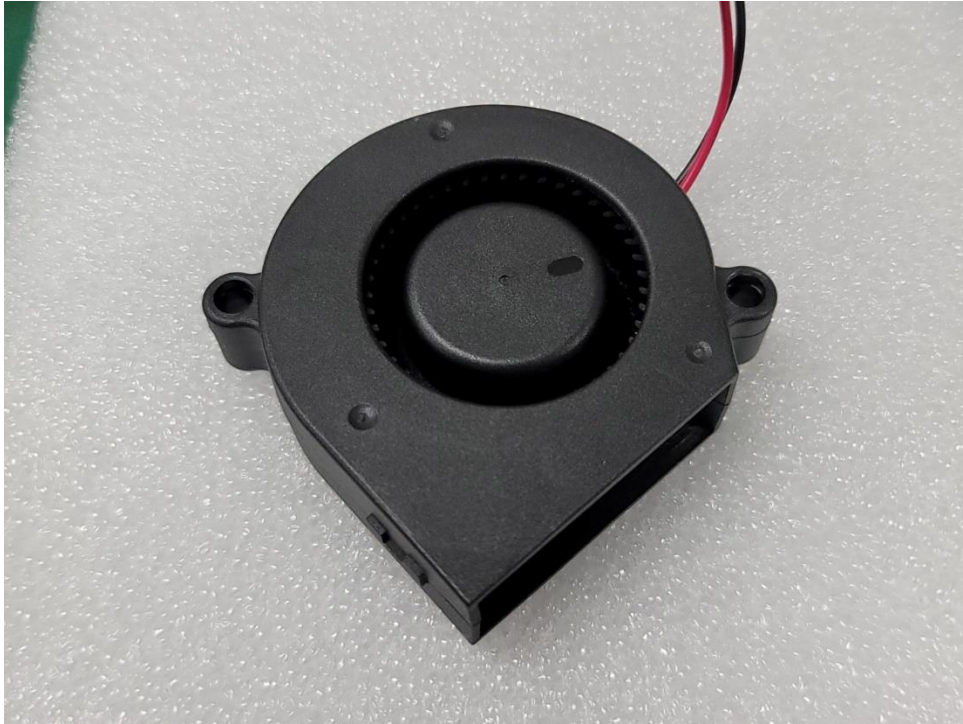
(Bottom)



This report shall not be reproduced except in full, without the written approval of KES Co., Ltd.
The results shown in this test report refer only to the sample(s) tested unless otherwise stated.
The authenticity of the test report, contact kes@kes.co.kr

EUT Internal View – FAN

(Top)



(Bottom)



This report shall not be reproduced except in full, without the written approval of KES Co., Ltd.
The results shown in this test report refer only to the sample(s) tested unless otherwise stated.
The authenticity of the test report, contact kes@kes.co.kr

Label Photographs



CAN ICES-3(A) / NMB-3(A)

This device complies with part 15 of the FCC Rules. Operation is subject to the following two conditions: (1) This device may not cause harmful interference, and (2) this device must accept any interference received, including interference that may cause undesired operation

This device complies with Industry Canada license-exempt RSS standard(s). Operation is subject to the following two conditions: (1) this device may not cause interference, and (2) this device must accept any interference, including interference that may cause undesired operation of the device.

Le présent appareil est conforme aux CNR d'Industrie Canada applicables aux appareils radio exempts de licence. L'exploitation est autorisée aux deux conditions suivantes :

(1) l'appareil ne doit pas produire de brouillage, et (2) l'utilisateur de l'appareil doit accepter tout brouillage radioélectrique subi, même si le brouillage est susceptible d'en compromettre le fonctionnement.