

**KES Co., Ltd.**

3701, 40, Simin-daero 365beon-gil,  
Dongan-gu, Anyang-si, Gyeonggi-do, 14057, Korea  
Tel: +82-31-425-6200 / Fax: +82-31-424-0450  
www.kes.co.kr

Report No.:

KES-EM-21T0866-R1

Page (1) of (40)

# EMC TEST REPORT For VCCI

Test Report No. : KES-EM-21T0866-R1  
Date of Issue : Feb. 24, 2023  
Product name : NETWORK CAMERA  
Model/Type No. : QNO-7082R  
Variant Model : -  
Applicant : Hanwha Vision Co., Ltd  
Applicant Address : 6, Pangyo-ro 319Beon-gil, Bundang-gu, Seongnam-si,  
Gyeonggi-do, Republic of Korea  
Manufacturer : 1. HANWHA VISION VIETNAM COMPANY LIMITED  
2. D-TECH CO.,LTD.  
Manufacturer Address : 1. Lot O-2, Que Vo Industrial Zone extended area,  
Nam Son commune, Bac Ninh city, Bac Ninh province, Vietnam  
2. 173-25, Saneop-ro, Gwonseon-gu, Suwon-si, Gyeonggi- do,  
Korea (Suwon Industrial Complex)  
Date of Receipt : Aug. 27, 2021  
Test date : Sep. 02, 2021 ~ Sep. 04, 2021  
Test Results : ☒ **In Compliance** ☐ **Not in Compliance**

*Tested by*

Dae Hyun, Kim  
EMC Test Engineer

*Reviewed by*

Dong-Hun, Jang  
EMC Technical Manager

This test report is not related to KS Q ISO/IEC 17025 and KOLAS.

This report shall not be reproduced except in full, without the written approval of KES Co., Ltd.  
The results shown in this test report refer only to the sample(s) tested unless otherwise stated.  
The authenticity of the test report, contact kes@kes.co.kr

**KES Co., Ltd.**

3701, 40, Simin-daero 365beon-gil,  
Dongan-gu, Anyang-si, Gyeonggi-do, 14057, Korea  
Tel: +82-31-425-6200 / Fax: +82-31-424-0450  
www.kes.co.kr

Report No.:

KES-EM-21T0866-R1

Page (2) of (40)

**REPORT REVISION HISTORY**

Date	Test Report No.	Revision History
Sep. 16, 2021	KES-EM-21T0866	Issued
Feb. 24, 2023	KES-EM-21T0866-R1	Change the Applicant and manufacturer at the request of the customer

***This report shall not be reproduced except in full, without the written approval of KES Co., Ltd. This document may be altered or revised by KES Co., Ltd. personnel only, and shall be noted in the revision section of the document. Any alteration of this document not carried out by KES Co., Ltd. will constitute fraud and shall nullify the document.***

This report shall not be reproduced except in full, without the written approval of KES Co., Ltd.  
The results shown in this test report refer only to the sample(s) tested unless otherwise stated.  
The authenticity of the test report, contact kes@kes.co.kr



## TABLE OF CONTENTS

1.0	General Product Description.....	4
1.1	Test Voltage & Frequency .....	7
1.2	Variant Model Differences .....	7
1.3	Device Modifications .....	7
1.4	Equipment Under Test.....	7
1.5	Support Equipments .....	7
1.6	External I/O Cabling .....	8
1.7	EUT Operating Mode(s) .....	9
1.8	Configuration.....	10
1.9	Remarks when standards applied .....	11
1.10	Calibration Details of Equipment Used for Measurement.....	11
1.11	Test Facility .....	11
1.12	Laboratory Accreditations and Listings .....	11
2.0	Test Regulations.....	12
2.1	Conducted Emissions Mains Power Ports.....	14
2.2	Conducted Emissions at Telecommunication Ports.....	15
2.3	Radiated Electric Field Emissions(Below 1 GHz) .....	16
2.4	Radiated Electric Field Emissions(Above 1 GHz) .....	17
APPENDIX A – TEST DATA.....		18
Conducted Emissions at Mains Power Ports.....		18
Conducted Emissions at Telecommunication Ports .....		20
Radiated Electric Field Emissions(Below 1 GHz) .....		22
Radiated Electric Field Emissions(Above 1 GHz).....		24
Test Setup Photos and Configuration .....		26
Conducted Emissions at Mains Power Ports.....		26
Conducted Emissions at Telecommunication Ports .....		27
Radiated Electric Field Emissions(Below 1 GHz) .....		29
Radiated Electric Field Emissions(Above 1 GHz).....		31
EUT External Photographs .....		33
EUT Internal Photographs .....		34



## 1.0 General Product Description

### Main Specifications of EUT are:

<b>Video</b>	
Imaging Device	1/3" CMOS
Resolution	2560 x 1440, 1920 x 1080, 1280 x 960, 1280 x 720, 800 x 600, 800 x 448, 720 x 576, 720 x 480, 640 x 480, 640 x 360, 320 x 240
Max. Framerate	H.265/H.264 : Max. 30fps at 4M all resolutions, MJPEG : Max. 15fps
NETD	None
Pixel Size	None
Min. Illumination	Color : 0.1Lux (F1.6, 1/30sec) B/W : 0Lux (IR LED On)
Video Out	CVBS : 1.0 Vpp/75Ω composite, 720x480(N), 720x576(P) for installation
Video Transmission Distance	None
<b>Lens</b>	
Focal Length (Zoom Ratio)	3.2 ~ 10mm (3.1x) motorized varifocal
Max. Aperture Ratio	F1.6(Wide) ~ F2.9(Tele)
Angular Field of View	H : 98.6°(Wide) ~ 30.8°(Tele), V : 52.3°(Wide) ~ 17.3°(Tele), D : 115.7°(Wide) ~ 35.3°(Tele)
Min. Object Distance	None
Focus Control	Simple focus
Lens Type	None
Mount Type	None
Optional Lens	None
<b>Pan / Tilt / Rotate</b>	
Pan / Tilt / Rotate Range	None
Pan Range	None
Pan Speed	None
Tilt Range	None
Tilt Speed	None
Rotate Range	None
Sequence	None
Preset Accuracy	None
<b>Operational</b>	
Camera Title	Displayed up to 85 characters
Direction Indicator	None
Day & Night	Auto(ICR)
Backlight Compensation	BLC, WDR, SSDR
Wide Dynamic Range	120dB
Digital Noise Reduction	SSNR
Digital Image Stabilization	None

This report shall not be reproduced except in full, without the written approval of KES Co., Ltd.  
The results shown in this test report refer only to the sample(s) tested unless otherwise stated.  
The authenticity of the test report, contact kes@kes.co.kr

**KES Co., Ltd.**

3701, 40, Simin-daero 365beon-gil,  
Dongan-gu, Anyang-si, Gyeonggi-do, 14057, Korea  
Tel: +82-31-425-6200 / Fax: +82-31-424-0450  
www.kes.co.kr

Report No.:

KES-EM-21T0866-R1

Page (5) of (40)

Defog	None
Motion Detection	4ea, polygonal zones
Privacy Masking	6ea, rectangular zones
Gain Control	Low / Middle / High
White Balance	ATW / AWC / Manual / Indoor / Outdoor
LDC	Support
Electronic Shutter Speed	Minimum/Maximum/Anti flicker (1/5~1/12,000sec)
Digital PTZ	None
Video Rotation	Flip, Mirror, Hallway view(90°/270°)
Analytics	Defocus detection, Directional detection, Motion detection, Enter/Exit, Tampering, Virtual line
Business Intelligence	None
Serial Interface	None
Alarm I/O	Input 1ea / Output 1ea
Alarm Triggers	Analytics, Network disconnect, Alarm input
Alarm Events	File upload via FTP and e-mail, Notification via e-mail, SD/SDHC/SDXC or NAS recording at event triggers, Alarm output, Handover
Audio In	Line in
Audio Out	None
IR Viewable Length	30m (98.42ft)
IR Illuminator (Optional)	None
Water Removal	None
Auto Tracking	None
Coaxial Protocol	None
Color Palettes	None
<b>Radiometry</b>	
Temperature Detect Range	None
Temperature Accuracy	None
Temperature Detection	None
Additional	None
<b>Network</b>	
Ethernet	RJ-45 (10/100BASE-T)
Video Compression	H.265/H.264 : Main/High, MJPEG
Audio Compression	G.711 u-law / G.726 Selectable G.726(ADPCM) 8KHz, G.711 8KHz, G.726 16Kbps, 24Kbps, 32Kbps, 40Kbps
Smart Codec	Manual (5ea area), WiseStream II
Video Quality Adjustment	H.265/H.264 : Target bitrate level control, MJPEG : Quality level control
Bitrate Control	H.264/H.265 : CBR or VBR MJPEG : VBR
Streaming	Unicast (6 users) / Multicast Multiple streaming (Up to 3 profiles)

This report shall not be reproduced except in full, without the written approval of KES Co., Ltd.  
The results shown in this test report refer only to the sample(s) tested unless otherwise stated.  
The authenticity of the test report, contact kes@kes.co.kr

**KES Co., Ltd.**

3701, 40, Simin-daero 365beon-gil,  
Dongan-gu, Anyang-si, Gyeonggi-do, 14057, Korea  
Tel: +82-31-425-6200 / Fax: +82-31-424-0450  
www.kes.co.kr

Report No.:

KES-EM-21T0866-R1

Page (6) of (40)

Protocol	IPv4, IPv6, TCP/IP, UDP/IP, RTP(UDP), RTP(TCP), RTCP, RTSP, NTP, HTTP, HTTPS, SSL/TLS, DHCP, PPPoE, FTP, SMTP, ICMP, IGMP, SNMPv1/v2c/v3(MIB-2), ARP, DNS, DDNS, QoS, PIM-SM, UPnP, Bonjour, LLDP
Security	HTTPS(SSL) Login Authentication Digest Login Authentication IP Address Filtering User access Log 802.1X Authentication
Application Programming Interface	ONVIF Profile S/G/T, SUNAPI (HTTP API)
<b>General</b>	
Webpage Language	English, Korean, Chinese, French, Italian, Spanish, German, Japanese, Russian, Swedish, Portuguese, Czech, Polish, Turkish, Dutch, Hungarian, Greek
Web Viewer	
Edge Storage	Micro SD/SDHC/SDXC 1slot 128GB
Memory	512MB RAM, 256MB Flash
<b>Environmental &amp; Electrical</b>	
Operating Temperature / Humidity	-40°C~+55°C (-40°F~+131°F) / Less than 95% RH * Start up should be done at -30°C or above
Storage Temperature / Humidity	-40°C~+60°C (-40°F~+140°F) / Less than 95% RH
Certification	IP66, IK10
Input Voltage	PoE(IEEE802.3af, Class3), 12VDC
Power Consumption	PoE: Max 11.4W, typical 8W 12VDC: Max 9.6W, typical 7W
<b>Mechanical</b>	
Color / Material	Dark grey / Aluminum
RAL Code	
Product Dimensions / Weight	Ø78.0 x 259.8mm (Ø3.07 x 10.23"), 900g (1.984 lb)

This report shall not be reproduced except in full, without the written approval of KES Co., Ltd.  
The results shown in this test report refer only to the sample(s) tested unless otherwise stated.  
The authenticity of the test report, contact kes@kes.co.kr



## 1.1 Test Voltage & Frequency

Unless indicated otherwise on the individual data sheet or test results, the test voltage and frequency was as indicated below.

☒ AC 100 V, 60 Hz(DC Adapter Input power) ☒ PoE

## 1.2 Variant Model Differences

Not applicable

## 1.3 Device Modifications

Not applicable

## 1.4 Equipment Under Test

Description	Model Number	Serial Number	Manufacturer	Remarks
NETWORK CAMERA	QNO-7082R	-	HANWHA VISION VIETNAM COMPANY LIMITED	EUT

## 1.5 Support Equipments

Description	Model Number	Serial Number	Manufacturer	Remarks
PoE Adapter	PT-PSE109GBRO-AH-S	-	Dongguan PROCET Network Technology Co., Ltd	-
DC Adapter	2ACB022F	-	Channel Well Technology (Guangzhou) Co., Ltd.	-
Notebook	LG15N54	507NZET04018 0	LG Electronics Ltd	-
Notebook Adapter	PA-1900-14	OF4A26334870 1J247	LITE-ON TECHNOLOGY COPORATION	-
Micro SD Card	-	-	SanDisk	-
Button Alarm	-	-	-	-
Multi Metter	DM-1010	-	DONG HWA	-
Mic	CMK-303	-	CAMAC	-
SmartPhone	A1429	-	Apple	-



## 1.6 External I/O Cabling

### ■ DC Adapter Mode

Start		END		Cable Spec.	
Description	I/O Port	Description	I/O Port	Length	Shield
NETWORK CAMERA (EUT)	DC Jack (2 Pin)	DC Adapter	DC Jack (2 Pin)	0.8	U
	RJ-45 (LAN)	Notebook	RJ-45 (LAN)	3.5	U
	Micro SD Card Slot	Micro SD Card	Micro SD Card Slot	-	-
	Alarm In (2 Pin)	Button Alarm	2 Pin	3.0	U
	Alarm Out (2 Pin)	Multi Metter	2 Pin	3.5	U
	Audio In (3.5 mm)	Mic	3.5 mm	1.8	U
Mic	-	SmartPhone	-	-	-
Notebook	DC Jack	Notebook Adapter	DC Jack	2.5	S

\* Unshielded=U, Shielded=S

### ■ PoE Adapter Mode

Start		END		Cable Spec.	
Description	I/O Port	Description	I/O Port	Length	Shield
NETWORK CAMERA (EUT)	RJ-45 (PoE)	PoE Adapter	RJ-45 (PoE)	3.5	U
	Micro SD Card Slot	Micro SD Card	Micro SD Card Slot	-	-
	Alarm In (2 Pin)	Button Alarm	2 Pin	3.0	U
	Alarm Out (2 Pin)	Multi Metter	2 Pin	3.5	U
	Audio In (3.5 mm)	Mic	3.5 mm	1.8	U
PoE Adapter	RJ-45 (LAN)	Notebook	RJ-45 (LAN)	1.5	U
Mic	-	SmartPhone	-	-	-
Notebook	DC Jack	Notebook Adapter	DC Jack	2.5	S

\* Unshielded=U, Shielded=S



**KES Co., Ltd.**

3701, 40, Simin-daero 365beon-gil,  
Dongan-gu, Anyang-si, Gyeonggi-do, 14057, Korea  
Tel: +82-31-425-6200 / Fax: +82-31-424-0450  
www.kes.co.kr

Report No.:

KES-EM-21T0866-R1

Page (9) of (40)

## 1.7 EUT Operating Mode(s)

Test Mode	operating
DC Adapter Mode / PoE Adapter Mode	Checked that the camera video output was working properly in the web viewer and used the ping test to verify that the network behavior was working properly.

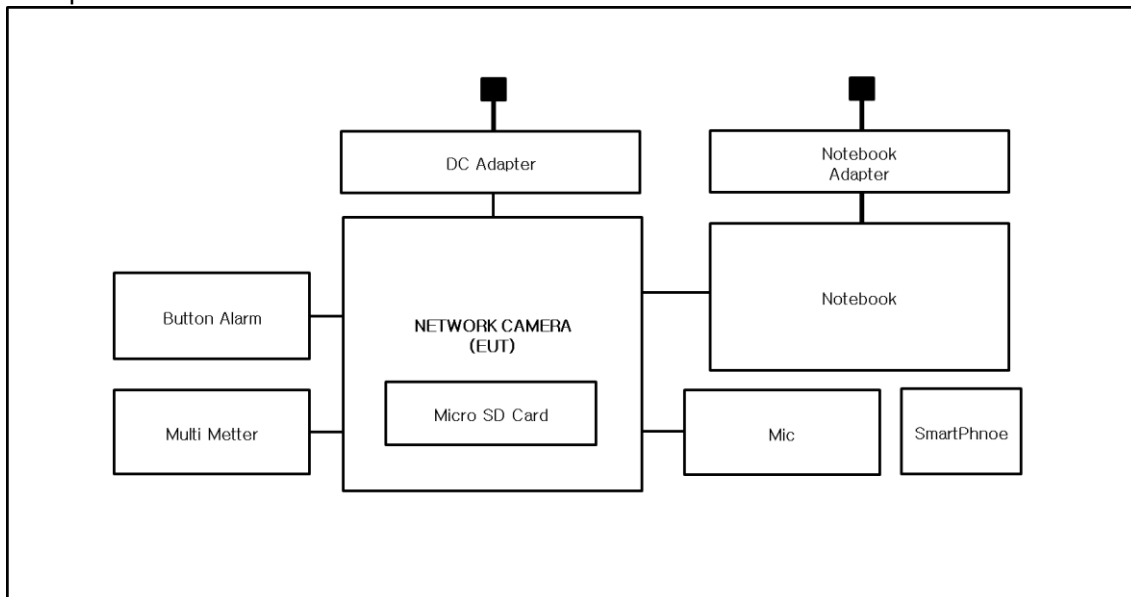
EUT Test operating S/W		
Name	Version	Manufacture Company
Web Viewer	-	Hanwha Vision Co., Ltd

This report shall not be reproduced except in full, without the written approval of KES Co., Ltd.  
The results shown in this test report refer only to the sample(s) tested unless otherwise stated.  
The authenticity of the test report, contact kes@kes.co.kr

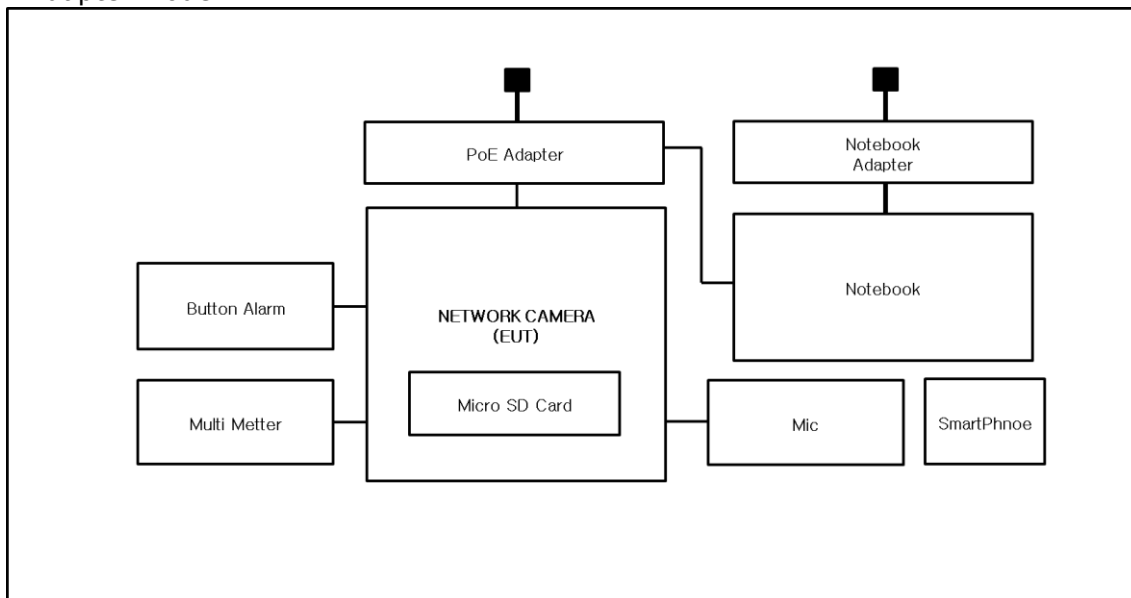
## 1.8 Configuration

■ AC Main  
 □ DC Main

### ■ DC Adapter Mode



### ■ PoE Adapter Mode



## 1.9 Remarks when standards applied

N/A







## 1.10 Calibration Details of Equipment Used for Measurement

Test equipment and test accessories are calibrated on regular basis. The maximum time between calibrations is one year or what is recommended by the manufacturer, whichever is less.

## 1.11 Test Facility

The measurement facility is located at 473-21, Gayeo-ro, Yeosu-si, Gyeonggi-do, 12658, Korea, Republic of. The sites are constructed in conformance with the requirements of ANSI C63.4a-2017 and CISPR 16-1-4:2019

## 1.12 Laboratory Accreditations and Listings

	Agency	Scope of Accreditation	Logo
KOREA	<b>RRA</b>	EMI (3 m & 10 m Semi-Anechoic Chamber and conducted test site) EMS (ESD, RS, EFT/Burst, Surge, CS, Magnetic, Dips and interruptions)	 KR0100
International	<b>KOLAS</b>	EMI (3 m & 10 m Semi-Anechoic Chamber and conducted test site) EMS (ESD, RS, EFT/Burst, Surge, CS, Magnetic, Dips and interruptions)	 KT489
USA	<b>FCC</b>	3 m & 10 m Semi-Anechoic Chamber Conducted test site to perform FCC Part 15/18 measurements.	 KR0100
Canada	<b>ISED</b>	3 m & 10 m Semi-Anechoic Chamber and Conducted test site	 23298
JAPAN	<b>VCCI</b>	EMI (3 m & 10 m Semi-Anechoic Chamber and conducted test site)	 C-20136, T-20137, R-20181, G-20176
Europe	<b>TÜV SÜD</b>	EMI (3 m & 10 m Semi-Anechoic Chamber and conducted test site) EMS (ESD, RS, EFT/Burst, Surge, CS, Magnetic, Dips and interruptions)	 CARAT 001633 0004

## 2.0 Test Regulations

The emissions tests were performed according to following regulations:

☐ **EMC – Directive 2014/30/EU**

☐ EN 61000-6-3:2011

☐ EN 61000-6-1:2007

☐ EN 61000-6-4:2007 +A1:2011

☐ EN 61000-6-2:2005

☐ EN 55011:2007 +A1:2010

☐ Group 1

☐ Group 2

☐ Class A

☐ Class B

☐ EN 55014-1:2006 +A2:2011

☐ EN 55014-2:1997 +A2:2008

☐ EN 55015:2013

☐ EN 61547 :2009

☐ EN 55032:2015

☐ Class A

☐ Class B

☐ EN 55024:2010 +A1:2015

☐ EN 50130-4:2011 +A1:2014

☐ EN 61000-3-2:2014

☐ EN 61000-3-3:2013

☐ EN 61326-1:2013



**KES Co., Ltd.**

3701, 40, Simin-daero 365beon-gil,  
Dongan-gu, Anyang-si, Gyeonggi-do, 14057, Korea  
Tel: +82-31-425-6200 / Fax: +82-31-424-0450  
www.kes.co.kr

Report No.:

KES-EM-21T0866-R1

Page (13) of (40)

- 
- |   |   |                                  |
|---|---|----------------------------------|
| <input checked="" type="checkbox"/> <b>VCCI-CISPR 32:2016</b> | <input checked="" type="checkbox"/> Class A | <input type="checkbox"/> Class B |
| <input type="checkbox"/> <b>AS/NZS CISPR32:2015</b>           | <input type="checkbox"/> Class A            | <input type="checkbox"/> Class B |
| <input type="checkbox"/> <b>47 CFR Part 15, Subpart B</b>     |   |                                  |
| <input type="checkbox"/> CISPR 22:2009 +A1:2010               | <input type="checkbox"/> Class A            | <input type="checkbox"/> Class B |
| <input type="checkbox"/> ANSI C63.4-2009                      |   |                                  |
| <input type="checkbox"/> <b>IC Regulation ICES-003 : 2016</b> |   |                                  |
| <input type="checkbox"/> CAN/CSA CISPR 22-10                  | <input type="checkbox"/> Class A            | <input type="checkbox"/> Class B |
| <input type="checkbox"/> ANSI C63.4-2014                      |   |                                  |
| <input type="checkbox"/> <b>RE- Directive 2014/53/EU</b>      |   |                                  |
| <input type="checkbox"/> EN 301 489-1 V1.9.2                  |   |                                  |
| <input type="checkbox"/> Equipment for fixed use              |   |                                  |
| <input type="checkbox"/> Equipment for vehicular use          |   |                                  |
| <input type="checkbox"/> Equipment for portable use           |   |                                  |
| <input type="checkbox"/> EN 301 489-3 V1.6.1                  |   |                                  |
| <input type="checkbox"/> EN 301 489-17 V2.2.1                 |   |                                  |
| <input type="checkbox"/> EN 60945:2002                        |   |                                  |

---

This report shall not be reproduced except in full, without the written approval of KES Co., Ltd.  
The results shown in this test report refer only to the sample(s) tested unless otherwise stated.  
The authenticity of the test report, contact kes@kes.co.kr

**KES Co., Ltd.**

3701, 40, Simin-daero 365beon-gil,  
Dongan-gu, Anyang-si, Gyeonggi-do, 14057, Korea  
Tel: +82-31-425-6200 / Fax: +82-31-424-0450  
www.kes.co.kr

Report No.:

KES-EM-21T0866-R1

Page (14) of (40)

## 2.1 Conducted Emissions Mains Power Ports

**Test Date**

Sep. 02, 2021

**Test Location**

Electro wave Shieldroom #6

**Test Equipment**

Used	Description	Model Number	Manufacturer	Serial Number	Cal. Due
<input checked="" type="checkbox"/>	EMI Test S/W	EMC32	R & S	9.12.00	-
<input checked="" type="checkbox"/>	EMI TEST RECEIVER	ESR3	R & S	101783	01, 15, 2022
<input checked="" type="checkbox"/>	LISN	ENV216	R & S	101787	12, 29, 2021
<input checked="" type="checkbox"/>	LISN	ESH2-Z5	R & S	100450	12, 29, 2021
<input checked="" type="checkbox"/>	PULSE LIMITER	ESH3-Z2	R & S	101915	12, 29, 2021

**Test Conditions**

Temperature: (25,0 ± 0,2) °C

Relative Humidity: (49,4 ± 0,2) % R.H.

**Frequency Range of Measurement**

150 kHz to 30 MHz

**Instrument Settings**

IF Band Width: 9 kHz

**Test Results**

The requirements are:

- ☒ PASS  
☐ NOT PASS  
☐ NOT APPLICABLE

**Remarks**See Appendix A for test data.

This report shall not be reproduced except in full, without the written approval of KES Co., Ltd.  
The results shown in this test report refer only to the sample(s) tested unless otherwise stated.  
The authenticity of the test report, contact kes@kes.co.kr

## 2.2 Conducted Emissions at Telecommunication Ports

### Test Date

Sep. 02, 2021

### Test Location

Electro wave Shieldroom #6

### Test Equipment

Used	Description	Model Number	Manufacturer	Serial Number	Cal. Due
<input checked="" type="checkbox"/>	EMI Test S/W	EMC32	R & S	9.12.00	-
<input checked="" type="checkbox"/>	EMI TEST RECEIVER	ESR3	R & S	101783	01, 15, 2022
<input checked="" type="checkbox"/>	LISN	ENV216	R & S	101787	12, 29, 2021
<input checked="" type="checkbox"/>	LISN	ESH2-Z5	R & S	100450	12, 29, 2021
<input checked="" type="checkbox"/>	PULSE LIMITER	ESH3-Z2	R & S	101915	12, 29, 2021
<input checked="" type="checkbox"/>	8-WIRE ISN CAT3,5	ENY81	R & S	100174	12, 30, 2021
<input type="checkbox"/>	8-WIRE ISN CAT6	ENY81-CAT6	R & S	101665	12, 30, 2021
<input type="checkbox"/>	CDN	CDNS502A	TESEQ	40431	

### Test Conditions

Temperature: (25,0 ± 0,2) °C  
Relative Humidity: (49,4 ± 0,2) % R.H.

### Frequency Range of Measurement

150 kHz to 30 MHz

### Instrument Settings

IF Band Width: 9 kHz

### Test Results

The requirements are:

- ☒ PASS  
☐ NOT PASS  
☐ NOT APPLICABLE

### Remarks

- See Appendix A for test data.  
- For Ethernet interfaces, measurements are required at the highest data rate supported by the interface.

**KES Co., Ltd.**

3701, 40, Simin-daero 365beon-gil,  
Dongan-gu, Anyang-si, Gyeonggi-do, 14057, Korea  
Tel: +82-31-425-6200 / Fax: +82-31-424-0450  
www.kes.co.kr

Report No.:

KES-EM-21T0866-R1

Page (16) of (40)

## 2.3 Radiated Electric Field Emissions(Below 1 GHz)

**Test Date**

Sep. 04, 2021

**Test Location**☐ OPEN AREA TEST SITE #2☒ SEMI ANECHOIC CHAMBER #4(10m)**Test Equipment**

Used	Description	Model Number	Manufacturer	Serial Number	Cal. Due
<input checked="" type="checkbox"/>	EMI Test S/W	EP5/RE	TOYO Corporation	6.0.0	-
<input checked="" type="checkbox"/>	EMI TEST RECEIVER	ESU26	R & S	100551	04, 01, 2022
<input checked="" type="checkbox"/>	AMPLIFIER	SCU 01	R & S	100603	11, 25, 2021
<input checked="" type="checkbox"/>	TRILOG-BROADBAND ANTENNA	VULB9163	Schwarzbeck	715	12, 08, 2022
<input checked="" type="checkbox"/>	ATTENUATOR	8491A	HP	32173	03, 10, 2022

**Test Conditions**

Temperature: (24,4 ± 0,3) °C

Relative Humidity: (49,9 ± 0,4) % R.H.

**Frequency Range of Measurement**

30 MHz to 1 GHz

**Instrument Settings**

IF Band Width: 120 kHz

**Test Results**

The requirements are:

☒ PASS☐ NOT PASS☐ NOT APPLICABLE**Remarks**See Appendix A for test data.

This report shall not be reproduced except in full, without the written approval of KES Co., Ltd.

The results shown in this test report refer only to the sample(s) tested unless otherwise stated.

The authenticity of the test report, contact kes@kes.co.kr



**KES Co., Ltd.**

3701, 40, Simin-daero 365beon-gil,  
Dongan-gu, Anyang-si, Gyeonggi-do, 14057, Korea  
Tel: +82-31-425-6200 / Fax: +82-31-424-0450  
www.kes.co.kr

Report No.:

KES-EM-21T0866-R1

Page (17) of (40)

## 2.4 Radiated Electric Field Emissions(Above 1 GHz)

**Test Date**

Sep. 03, 2021

**Test Location**

SEMI ANECHOIC CHAMBER #3

**Test Equipment**

Used	Description	Model Number	Manufacturer	Serial Number	Cal. Due
<input checked="" type="checkbox"/>	EMI Test S/W	EP5/RE	TOYO Corporation	6.0.0	-
<input checked="" type="checkbox"/>	EMI TEST RECEIVER	ESR7	R & S	101190	08, 03, 2022
<input checked="" type="checkbox"/>	PREAMPLIFIER	8449B	AGILENT	3008A01967	04, 07, 2022
<input type="checkbox"/>	ATTENUATOR	8491A	HP	35496	03, 10, 2022
<input checked="" type="checkbox"/>	DOUBLE RIDGED HORN ANTENNA	SAS-571	A.H.SYSTEM,INC	781	03, 11, 2022

**Test Conditions**

Temperature: (24,3 ± 0,2) °C

Relative Humidity: (49,8 ± 0,4) % R.H.

**Frequency Range of Measurement**

1 GHz to 6 GHz

**Instrument Settings**

IF Band Width: 1 MHz

**Test Results**

The requirements are:

- ☒ PASS  
☐ NOT PASS  
☐ NOT APPLICABLE

**Remarks**See Appendix A for test data.

This report shall not be reproduced except in full, without the written approval of KES Co., Ltd.  
The results shown in this test report refer only to the sample(s) tested unless otherwise stated.  
The authenticity of the test report, contact kes@kes.co.kr

## APPENDIX A – TEST DATA

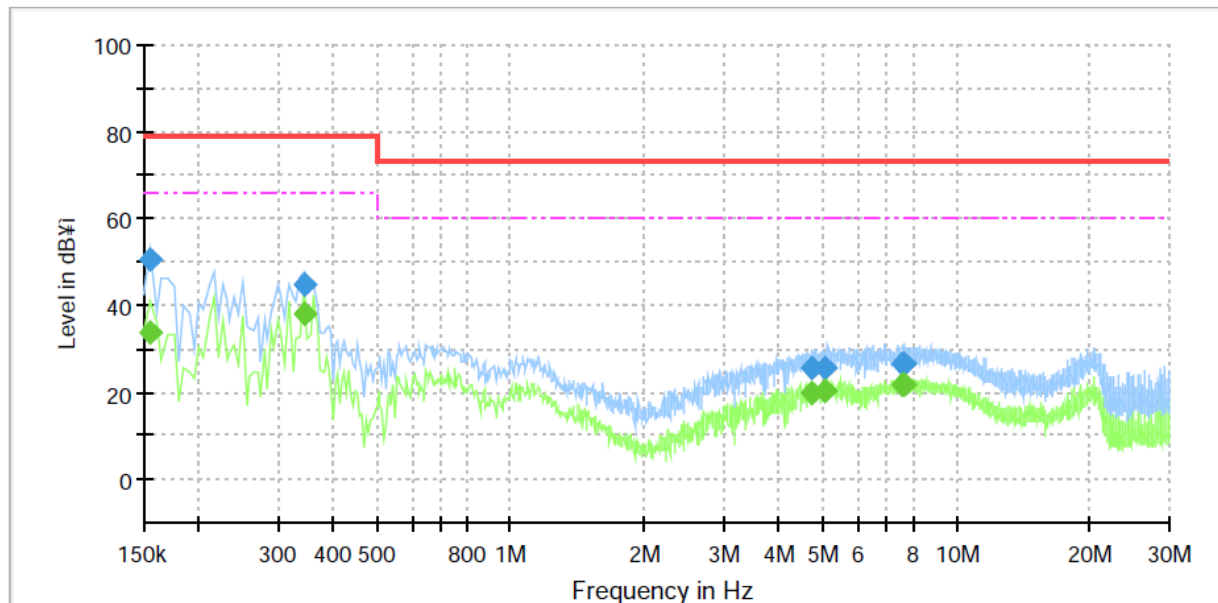
### Conducted Emissions at Mains Power Ports

■ DC Adapter Mode

HOT LINE

#### Common Information

Test Description:	Conducted Emission
Model No.:	QNO-7082R
Phase:	
Mode:	DC Adapter
Operator Name:	KES



### Final Result

Frequency (MHz)	QuasiPeak (dBμV)	CAverage (dBμV)	Limit (dBμV)	Margin (dB)	Meas. Time (ms)	Bandwidth (kHz)	Line	Corr. (dB)
0.155000	---	33.80	66.00	32.20	1000.0	9.000	L1	19.5
0.155000	50.42	---	79.00	28.58	1000.0	9.000	L1	19.5
0.345000	---	37.98	66.00	28.02	1000.0	9.000	L1	19.6
0.345000	44.78	---	79.00	34.22	1000.0	9.000	L1	19.6
4.735000	---	19.98	60.00	40.02	1000.0	9.000	L1	19.7
4.735000	25.34	---	73.00	47.66	1000.0	9.000	L1	19.7
5.095000	---	20.35	60.00	39.65	1000.0	9.000	L1	19.7
5.095000	25.70	---	73.00	47.30	1000.0	9.000	L1	19.7
7.535000	---	21.63	60.00	38.37	1000.0	9.000	L1	19.6
7.535000	26.34	---	73.00	46.66	1000.0	9.000	L1	19.6
7.635000	---	21.66	60.00	38.34	1000.0	9.000	L1	19.6
7.635000	26.35	---	73.00	46.65	1000.0	9.000	L1	19.6

This report shall not be reproduced except in full, without the written approval of KES Co., Ltd.

The results shown in this test report refer only to the sample(s) tested unless otherwise stated.

The authenticity of the test report, contact kes@kes.co.kr

## NEUTRAL LINE

## Common Information

Test Description:

Conducted Emission

Model No.:

QNO-7082R

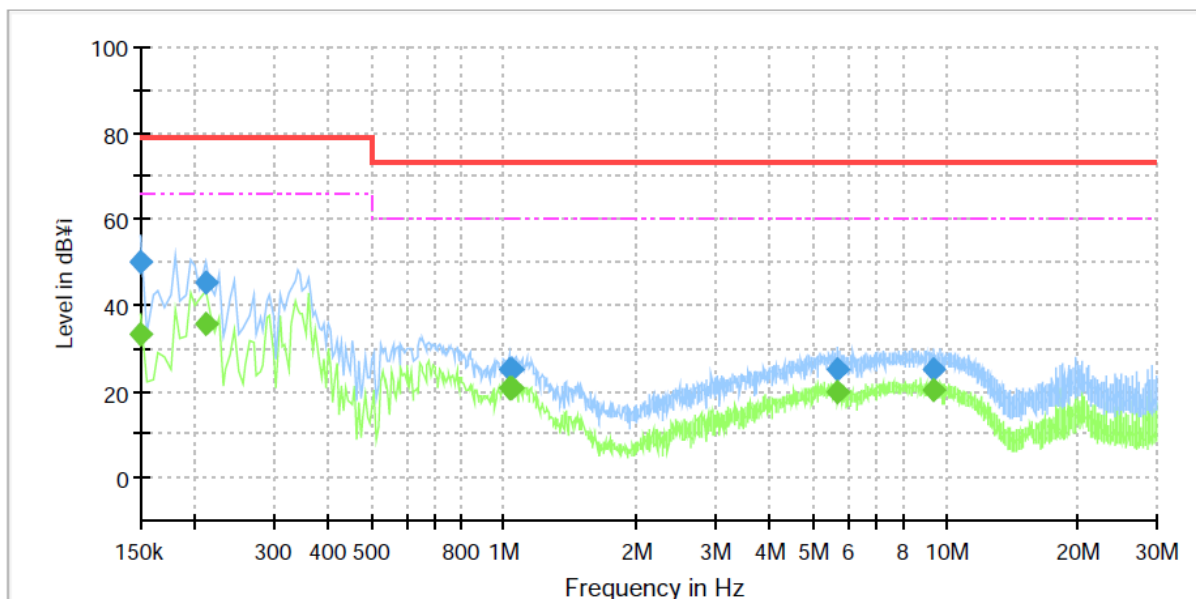
Phase:

Mode:

DC Adapter

Operator Name:

KES



## Final Result

Frequency (MHz)	QuasiPeak (dBμV)	CAverage (dBμV)	Limit (dBμV)	Margin (dB)	Meas. Time (ms)	Bandwidth (kHz)	Line	Corr. (dB)
0.150000	---	33.18	66.00	32.82	1000.0	9.000	N	19.4
0.150000	50.21	---	79.00	28.79	1000.0	9.000	N	19.4
0.210000	---	35.76	66.00	30.24	1000.0	9.000	N	19.5
0.210000	45.15	---	79.00	33.85	1000.0	9.000	N	19.5
1.025000	---	20.60	60.00	39.40	1000.0	9.000	N	20.1
1.025000	25.23	---	73.00	47.77	1000.0	9.000	N	20.1
1.035000	---	20.80	60.00	39.20	1000.0	9.000	N	20.1
1.035000	25.26	---	73.00	47.74	1000.0	9.000	N	20.1
5.675000	---	19.82	60.00	40.18	1000.0	9.000	N	19.6
5.675000	25.00	---	73.00	48.00	1000.0	9.000	N	19.6
9.405000	---	20.37	60.00	39.63	1000.0	9.000	N	19.8
9.405000	24.97	---	73.00	48.03	1000.0	9.000	N	19.8

### ◆ Calculation

$$\text{QuasiPeak [dBuV]} / \text{CAverage [dBuV]} = \text{Reading Value [dBuV]} + \text{Corr. [dB]}$$

QuasiPeak / CAverage : The Final Value

Reading Value : Not shown in the table.

Corr. : Correction values (LISN FACTOR + (Cable Loss + Pulse Limiter FACTOR))

This report shall not be reproduced except in full, without the written approval of KES Co., Ltd.

The results shown in this test report refer only to the sample(s) tested unless otherwise stated.

The authenticity of the test report, contact kes@kes.co.kr

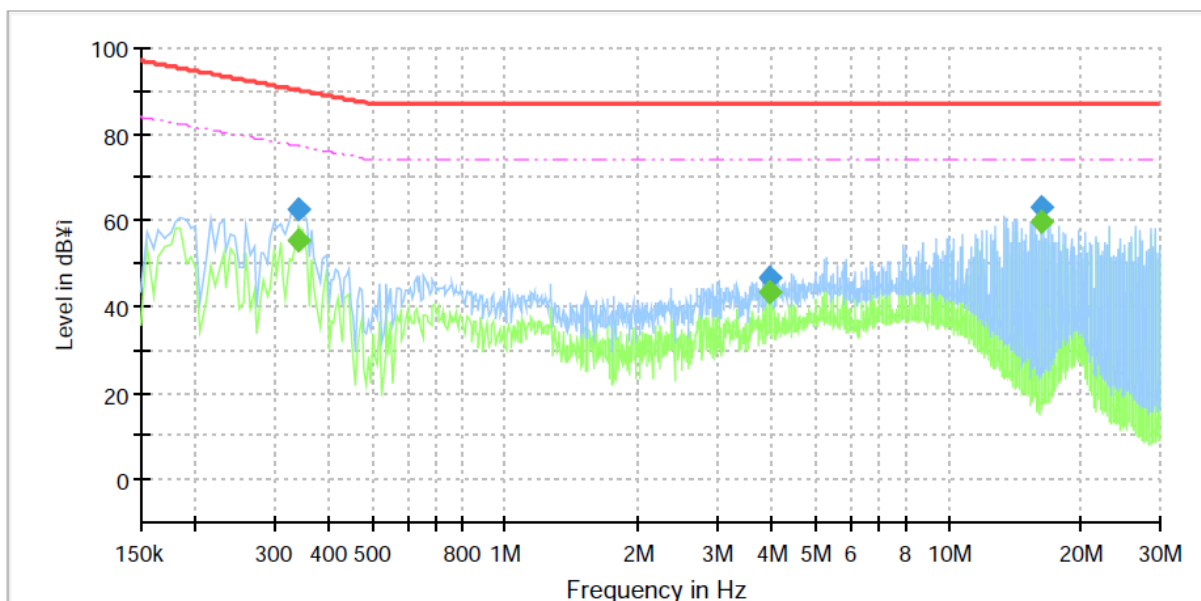
## Conducted Emissions at Telecommunication Ports

■ DC Adapter Mode

[100 Mbps]

### Common Information

Test Description:	Telecommunication Emission
Model No.:	QNO-7082R
Mode :	DC Adapter
Speed :	100 Mbps
Operator Name:	KES



### Final Result

Frequency (MHz)	QuasiPeak (dBμV)	CAverage (dBμV)	Limit (dBμV)	Margin (dB)	Meas. Time (ms)	Bandwidth (kHz)	Line	Corr. (dB)
0.340000	---	55.53	77.20	21.67	1000.0	9.000	Single Line	19.7
0.340000	62.52	---	90.20	27.68	1000.0	9.000	Single Line	19.7
3.955000	---	43.18	74.00	30.82	1000.0	9.000	Single Line	19.8
3.955000	46.45	---	87.00	40.55	1000.0	9.000	Single Line	19.8
16.230000	---	59.60	74.00	14.40	1000.0	9.000	Single Line	19.8
16.230000	63.06	---	87.00	23.94	1000.0	9.000	Single Line	19.8

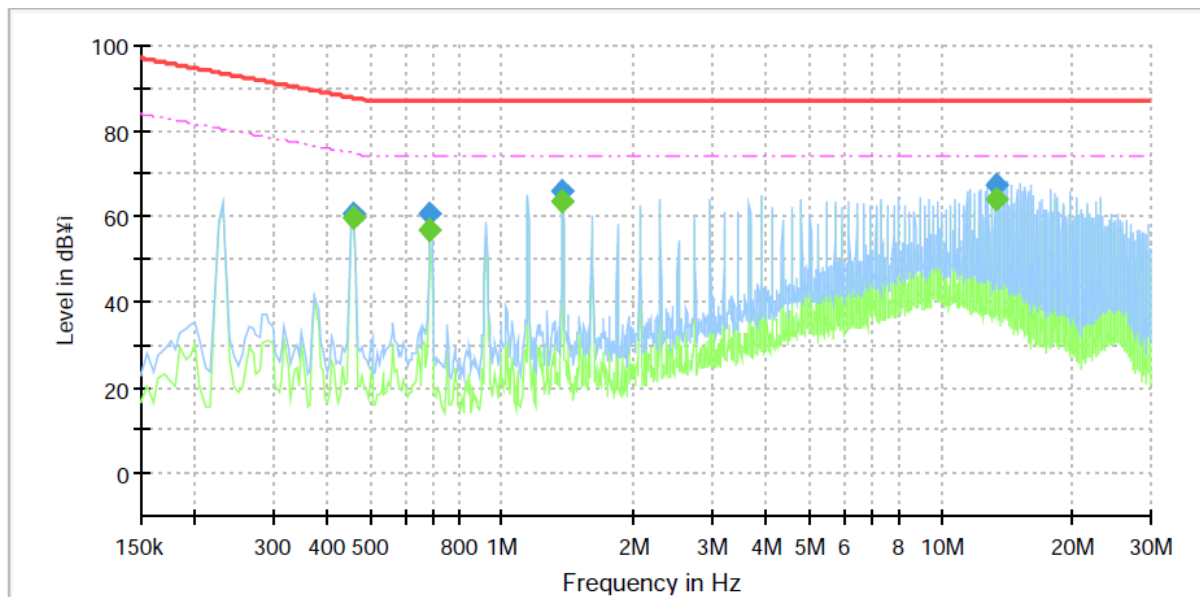
This report shall not be reproduced except in full, without the written approval of KES Co., Ltd.

The results shown in this test report refer only to the sample(s) tested unless otherwise stated.

The authenticity of the test report, contact kes@kes.co.kr

**PoE Adapter Mode**
**[100 Mbps]**
**Common Information**

Test Description:	Telecommunication Emission
Model No.:	QNO-7082R
Mode :	PoE Adapter
Speed :	100 Mbps
Operator Name:	KES


**Final Result**

Frequency (MHz)	QuasiPeak (dBμV)	CAverage (dBμV)	Limit (dBμV)	Margin (dB)	Meas. Time (ms)	Bandwidth (kHz)	Line	Corr. (dB)
0.460000	---	59.58	74.69	15.11	1000.0	9.000	Single Line	19.8
0.460000	60.65	---	87.69	27.04	1000.0	9.000	Single Line	19.8
0.685000	---	56.76	74.00	17.24	1000.0	9.000	Single Line	20.0
0.685000	60.84	---	87.00	26.16	1000.0	9.000	Single Line	20.0
1.375000	---	63.66	74.00	10.34	1000.0	9.000	Single Line	20.1
1.375000	65.93	---	87.00	21.07	1000.0	9.000	Single Line	20.1
13.290000	---	64.00	74.00	10.00	1000.0	9.000	Single Line	19.8
13.290000	67.28	---	87.00	19.72	1000.0	9.000	Single Line	19.8

**◆ Calculation**

$$\text{QuasiPeak [dBuV]} / \text{CAverage [dBuV]} = \text{Reading Value [dBuV]} + \text{Corr. [dB]}$$

QuasiPeak / CAverage : The Final Value

Reading Value : Not shown in the table.

Corr. : Correction values (ISN FACTOR + (Cable Loss + Pulse Limiter FACTOR))



## KES Co., Ltd.

3701, 40, Simin-daero 365beon-gil,  
Dongan-gu, Anyang-si, Gyeonggi-do, 14057, Korea  
Tel: +82-31-425-6200 / Fax: +82-31-424-0450  
www.kes.co.kr

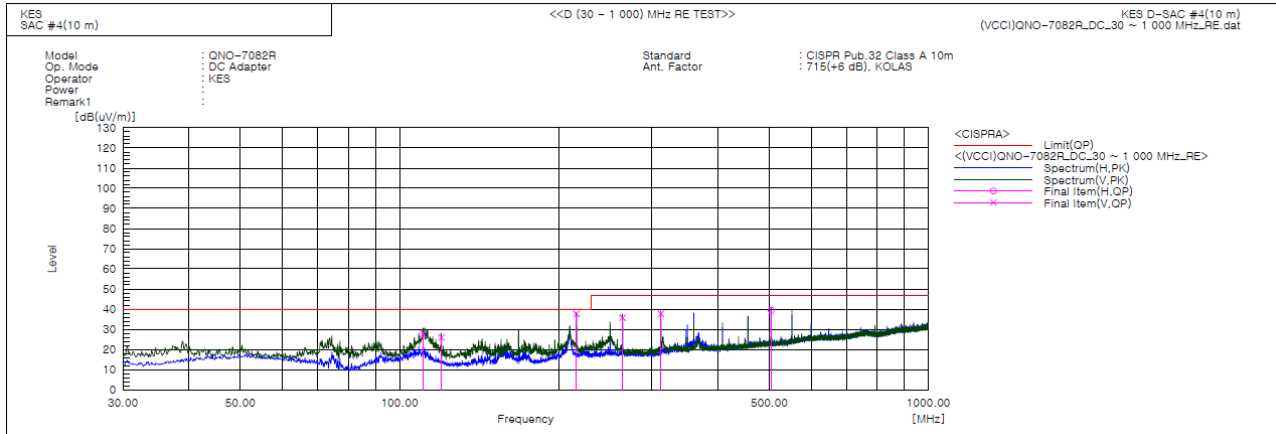
Report No.:

KES-EM-21T0866-R1

Page (22) of (40)

## Radiated Electric Field Emissions(Below 1 GHz)

### ■ DC Adapter Mode



### Final Result

No.	Frequency [MHz]	(P)	Reading QP [dB(uV)]	c.f [dB(1/m)]	Result QP [dB(uV/m)]	Limit QP [dB(uV/m)]	Margin QP [dB]	Height [cm]	Angle [deg]	Remark
1	110.753	V	50.1	-22.3	27.8	40.0	12.2	124.0	71.0	
2	119.968	V	50.1	-24.1	26.0	40.0	14.0	116.0	103.0	
3	215.876	V	58.1	-20.4	37.7	40.0	2.3	100.0	199.0	
4	263.891	V	54.6	-18.8	35.8	47.0	11.2	108.0	358.0	
5	311.906	V	54.9	-17.2	37.7	47.0	9.3	100.0	319.0	
6	503.845	H	50.9	-11.5	39.4	47.0	7.6	400.0	118.0	

This report shall not be reproduced except in full, without the written approval of KES Co., Ltd.

The results shown in this test report refer only to the sample(s) tested unless otherwise stated.

The authenticity of the test report, contact kes@kes.co.kr



## KES Co., Ltd.

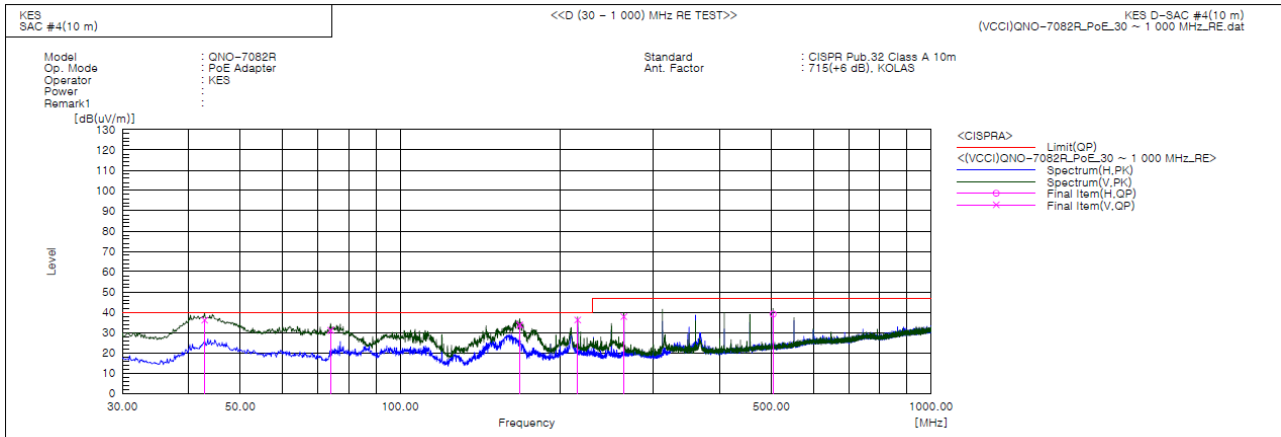
3701, 40, Simin-daero 365beon-gil,  
Dongan-gu, Anyang-si, Gyeonggi-do, 14057, Korea  
Tel: +82-31-425-6200 / Fax: +82-31-424-0450  
www.kes.co.kr

Report No.:

KES-EM-21T0866-R1

Page (23) of (40)

### PoE Adapter Mode



### Final Result

No.	Frequency [MHz]	(P)	Reading QP [dB(uV)]	c.f [dB(1/m)]	Result QP [dB(uV/m)]	Limit QP [dB(uV/m)]	Margin QP [dB]	Height [cm]	Angle [deg]	Remark
1	42.853	V	57.9	-21.8	36.1	40.0	3.9	129.0	11.0	
2	74.014	V	57.6	-26.5	31.1	40.0	8.9	105.0	288.0	
3	167.989	V	57.9	-24.2	33.7	40.0	6.3	100.0	30.0	
4	215.825	V	56.6	-20.4	36.2	40.0	3.8	137.0	333.0	
5	263.896	V	56.7	-18.8	37.9	47.0	9.1	100.0	272.0	
6	503.845	H	50.6	-11.5	39.1	47.0	7.9	359.0	113.0	

### ◆ Calculation

Corrected Amplitude [dBuV] = Amplitude[dBuV] + Correction Factor [dB]

Corrected Amplitude : The Final Value, Amplitude : Reading Value,

Correction Factor : ANT FACTOR + Cable loss

This report shall not be reproduced except in full, without the written approval of KES Co., Ltd.

The results shown in this test report refer only to the sample(s) tested unless otherwise stated.

The authenticity of the test report, contact kes@kes.co.kr





## KES Co., Ltd.

3701, 40, Simin-daero 365beon-gil,  
Dongan-gu, Anyang-si, Gyeonggi-do, 14057, Korea  
Tel: +82-31-425-6200 / Fax: +82-31-424-0450  
www.kes.co.kr

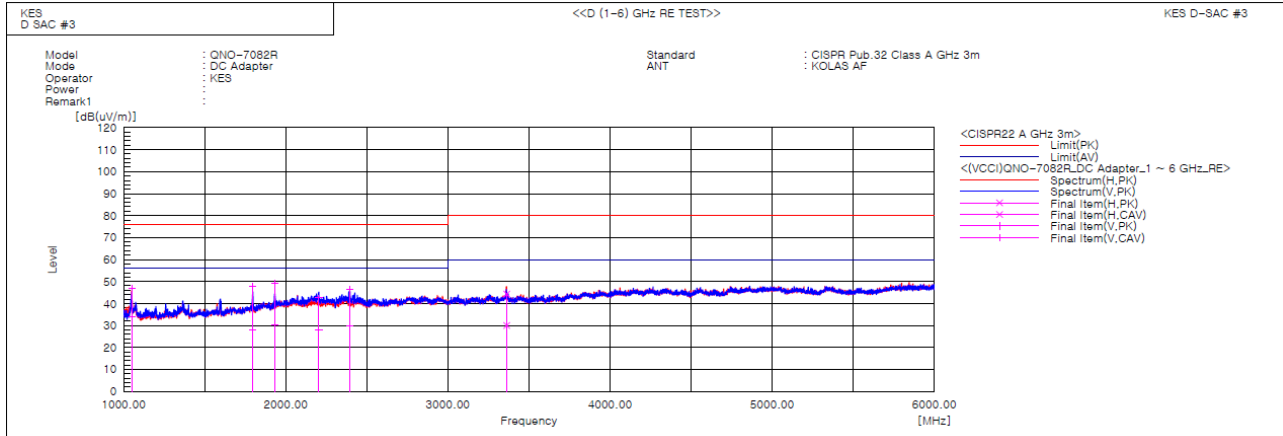
Report No.:

KES-EM-21T0866-R1

Page (24) of (40)

## Radiated Electric Field Emissions(Above 1 GHz)

### ■ DC Adapter Mode



### Final Result

No.	Frequency [MHz]	(P)	Reading PK [dB(uV)]	Reading CAV [dB(uV)]	c.f [dB(1/m)]	Result PK [dB(uV/m)]	Result CAV [dB(uV/m)]	Limit PK [dB(uV/m)]	Limit AV [dB(uV/m)]	Margin PK [dB]	Margin CAV [dB]	Height [cm]	Angle [deg]	Remark
1	1050.320	V	56.4	43.3	-9.5	46.9	33.8	76.0	56.0	29.1	22.2	100.0	183.5	
2	1796.620	V	50.9	31.2	-3.1	47.8	28.1	76.0	56.0	28.2	27.9	100.0	308.9	
3	1932.157	V	50.8	31.9	-1.5	49.3	30.4	76.0	56.0	26.7	25.6	100.0	349.5	
4	2203.092	V	42.9	28.5	-0.4	42.5	28.1	76.0	56.0	33.5	27.9	100.0	231.0	
5	2392.744	V	46.2	29.6	0.2	46.4	29.8	76.0	56.0	29.6	26.2	100.0	186.7	
6	3361.523	H	41.2	26.9	3.1	44.3	30.0	80.0	60.0	35.7	30.0	100.0	14.6	

This report shall not be reproduced except in full, without the written approval of KES Co., Ltd.

The results shown in this test report refer only to the sample(s) tested unless otherwise stated.

The authenticity of the test report, contact kes@kes.co.kr





## KES Co., Ltd.

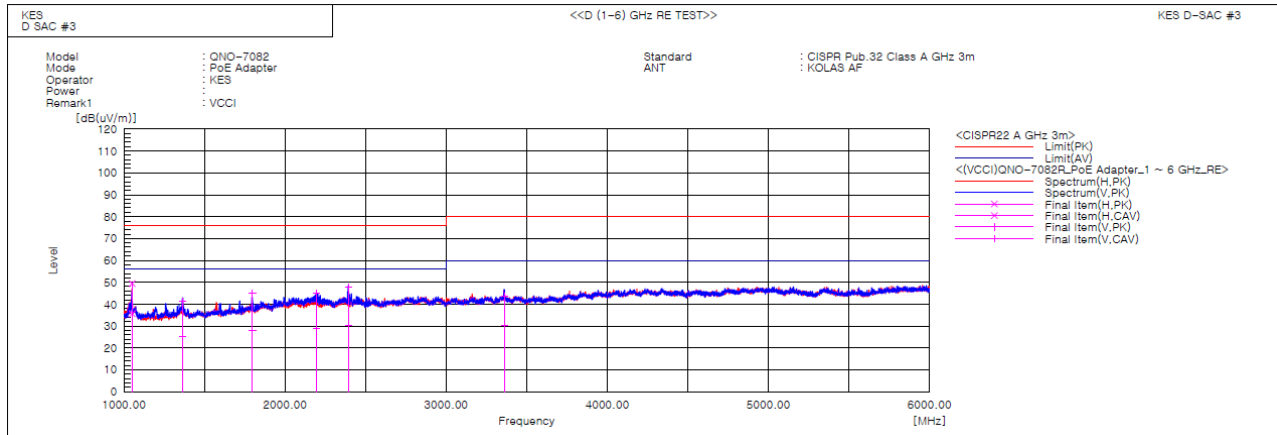
3701, 40, Simin-daero 365beon-gil,  
Dongan-gu, Anyang-si, Gyeonggi-do, 14057, Korea  
Tel: +82-31-425-6200 / Fax: +82-31-424-0450  
www.kes.co.kr

Report No.:

KES-EM-21T0866-R1

Page (25) of (40)

### PoE Adapter Mode



#### Final Result

No.	Frequency [MHz]	(P)	Reading PK [dB(uV)]	Reading CAV [dB(uV)]	c.f [dB(1/m)]	Result PK [dB(uV/m)]	Result CAV [dB(uV/m)]	Limit PK [dB(uV/m)]	Limit AV [dB(uV/m)]	Margin PK [dB]	Margin CAV [dB]	Height [cm]	Angle [deg]	Remark
1	1050.220	H	59.0	45.1	-9.5	49.5	35.6	76.0	56.0	26.5	20.4	100.0	343.8	
2	1364.195	V	48.5	32.2	-7.0	41.5	25.2	76.0	56.0	34.5	30.8	100.0	43.5	
3	1797.581	V	48.0	31.1	-3.1	44.9	28.0	76.0	56.0	31.1	28.0	100.0	143.1	
4	2196.901	V	45.5	29.1	-0.4	45.1	28.7	76.0	56.0	30.9	27.3	100.0	54.4	
5	2392.850	V	47.7	30.3	0.2	47.9	30.5	76.0	56.0	28.1	25.5	100.0	0.4	
6	3360.082	V	40.6	27.3	3.1	43.7	30.4	80.0	60.0	36.3	29.6	100.0	212.9	

#### Calculation

Result(PK/CAV) [dB( $\mu$ V/m)] = (Reading(PK/CAV)[dB( $\mu$ V)] + c.f[dB(1/m)])

Margin(PK/CAV)[dB] = Limit[dB( $\mu$ V/m)] - Result(PK/CAV) [dB( $\mu$ V/m)]

Reading(PK/CAV) : Reading value, Result(PK/CAV) : Reading value + Factor value

Limit(QP) : Limit value, c.f : (ANT Factor + Cable Loss - Preamp Factor), Margin: Margin value

This report shall not be reproduced except in full, without the written approval of KES Co., Ltd.

The results shown in this test report refer only to the sample(s) tested unless otherwise stated.

The authenticity of the test report, contact kes@kes.co.kr

## Test Setup Photos and Configuration

### Conducted Emissions at Mains Power Ports

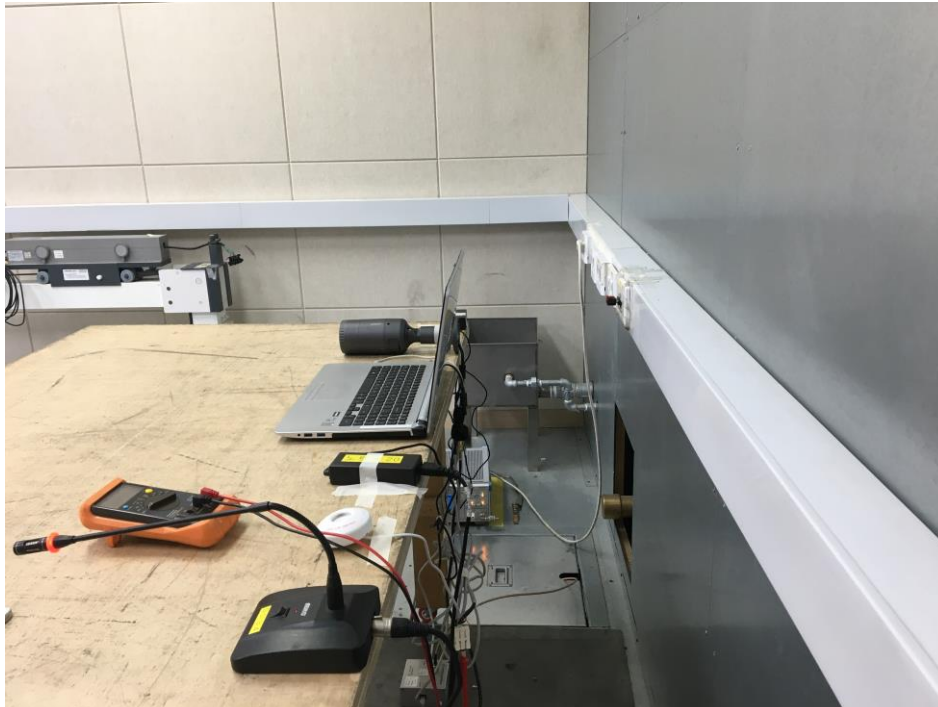
#### ■ DC Adapter Mode



This report shall not be reproduced except in full, without the written approval of KES Co., Ltd.  
The results shown in this test report refer only to the sample(s) tested unless otherwise stated.  
The authenticity of the test report, contact kes@kes.co.kr

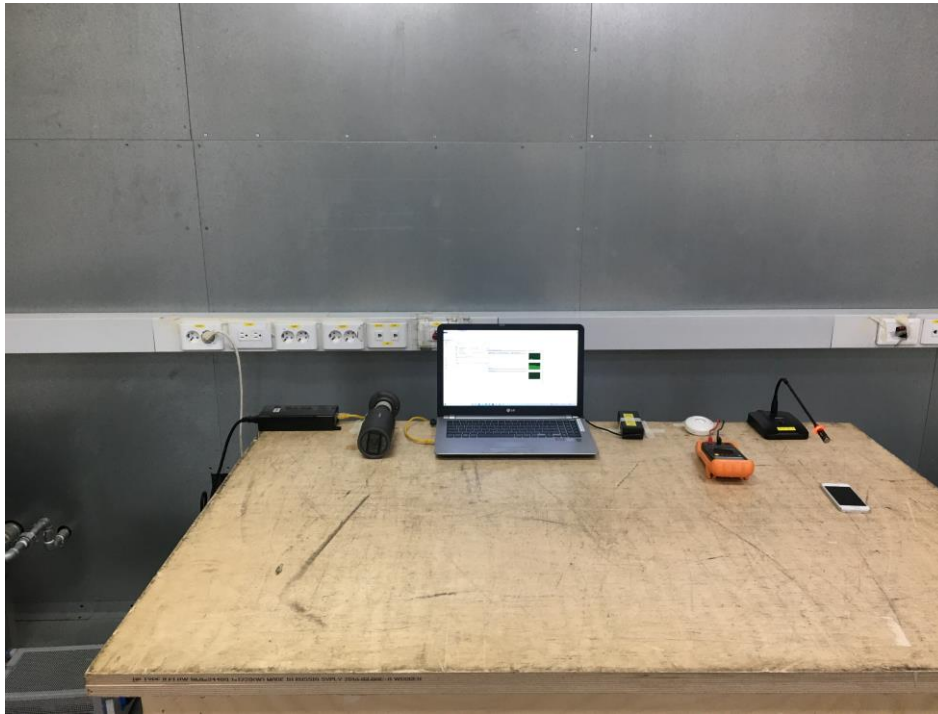
## Conducted Emissions at Telecommunication Ports

### ■ DC Adapter Mode



This report shall not be reproduced except in full, without the written approval of KES Co., Ltd.  
The results shown in this test report refer only to the sample(s) tested unless otherwise stated.  
The authenticity of the test report, contact kes@kes.co.kr

### ■ PoE Adapter Mode

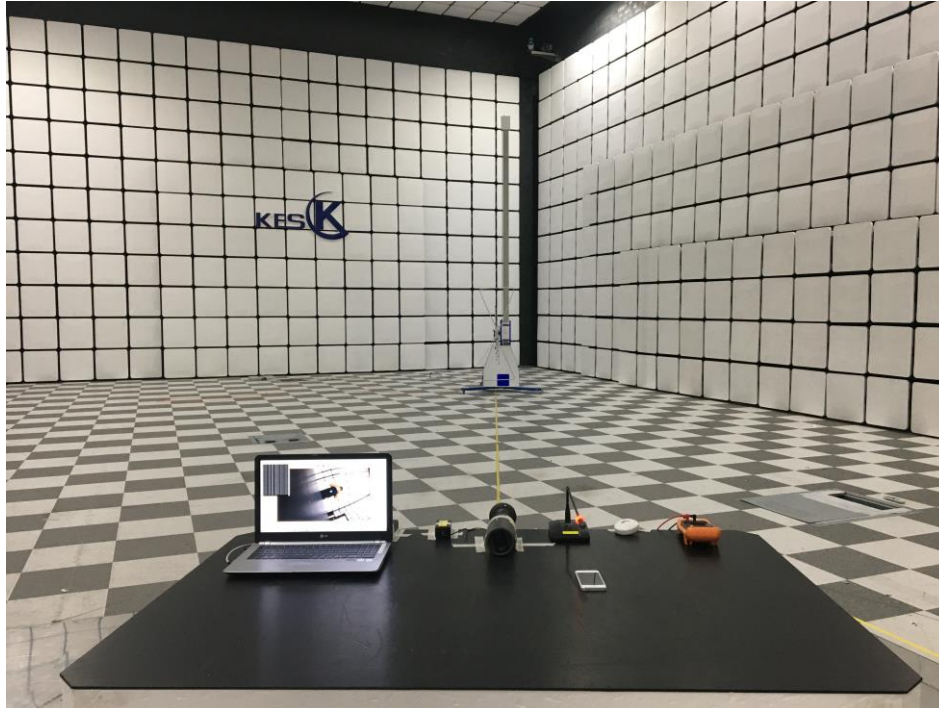


This report shall not be reproduced except in full, without the written approval of KES Co., Ltd.  
The results shown in this test report refer only to the sample(s) tested unless otherwise stated.  
The authenticity of the test report, contact kes@kes.co.kr

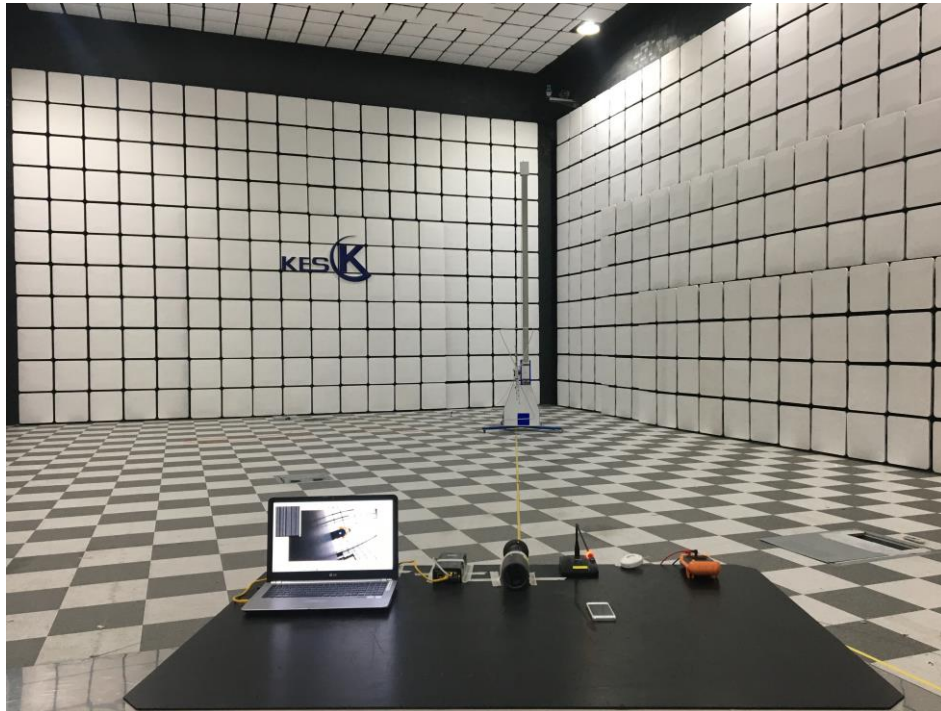


## Radiated Electric Field Emissions(Below 1 GHz)

### ■ DC Adapter Mode



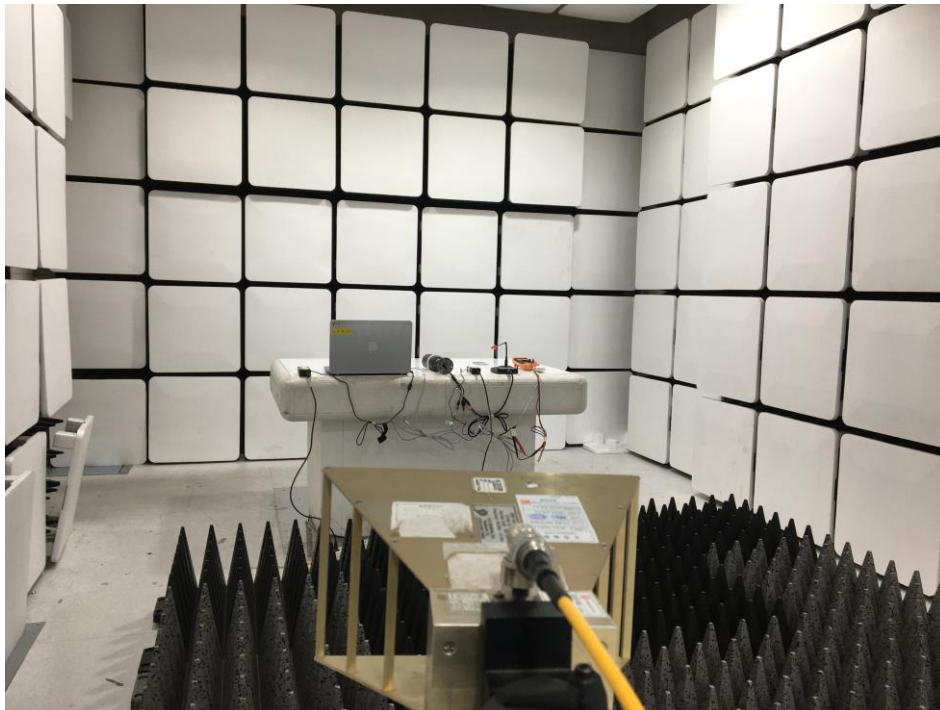
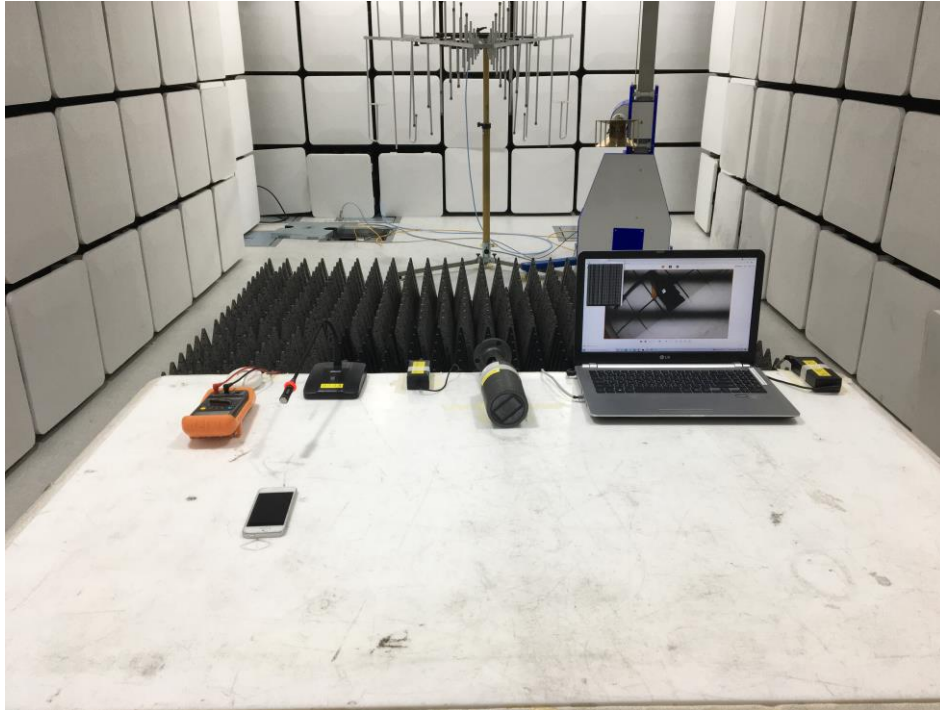
This report shall not be reproduced except in full, without the written approval of KES Co., Ltd.  
The results shown in this test report refer only to the sample(s) tested unless otherwise stated.  
The authenticity of the test report, contact kes@kes.co.kr

**■ PoE Adapter Mode**

This report shall not be reproduced except in full, without the written approval of KES Co., Ltd.  
The results shown in this test report refer only to the sample(s) tested unless otherwise stated.  
The authenticity of the test report, contact kes@kes.co.kr

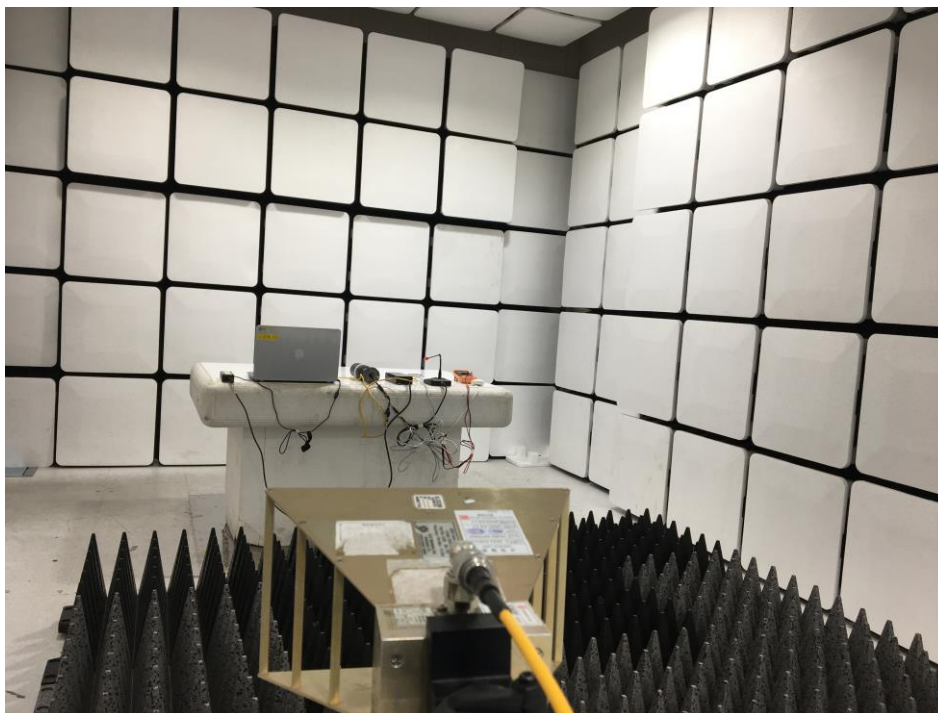
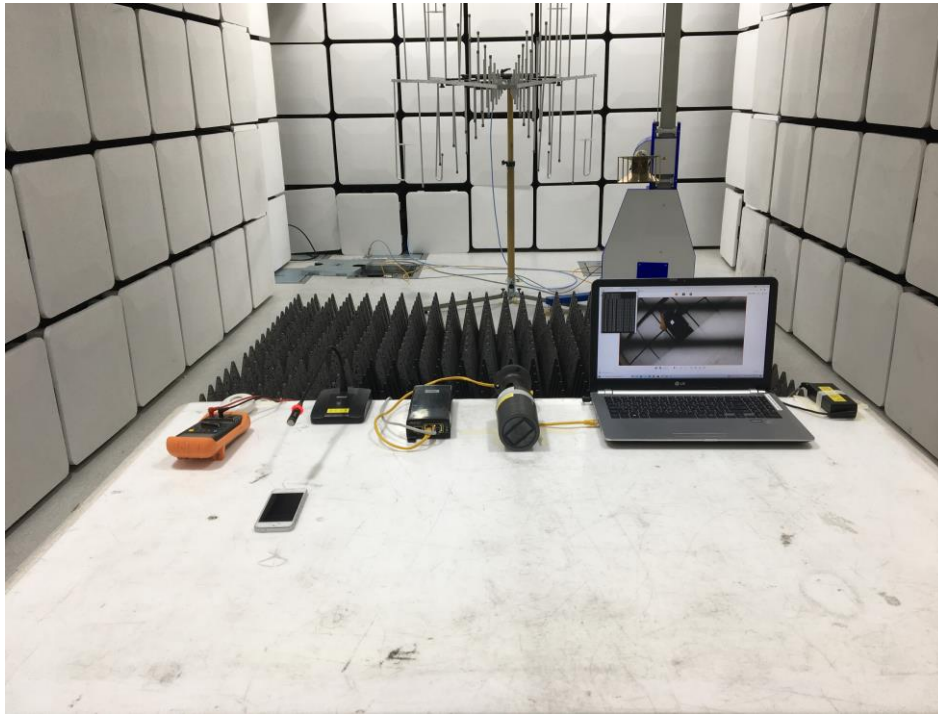
## Radiated Electric Field Emissions(Above 1 GHz)

### ■ DC Adapter Mode



This report shall not be reproduced except in full, without the written approval of KES Co., Ltd.  
The results shown in this test report refer only to the sample(s) tested unless otherwise stated.  
The authenticity of the test report, contact kes@kes.co.kr



**■ PoE Adapter Mode**

This report shall not be reproduced except in full, without the written approval of KES Co., Ltd.  
The results shown in this test report refer only to the sample(s) tested unless otherwise stated.  
The authenticity of the test report, contact kes@kes.co.kr



## EUT External Photographs

(Top)



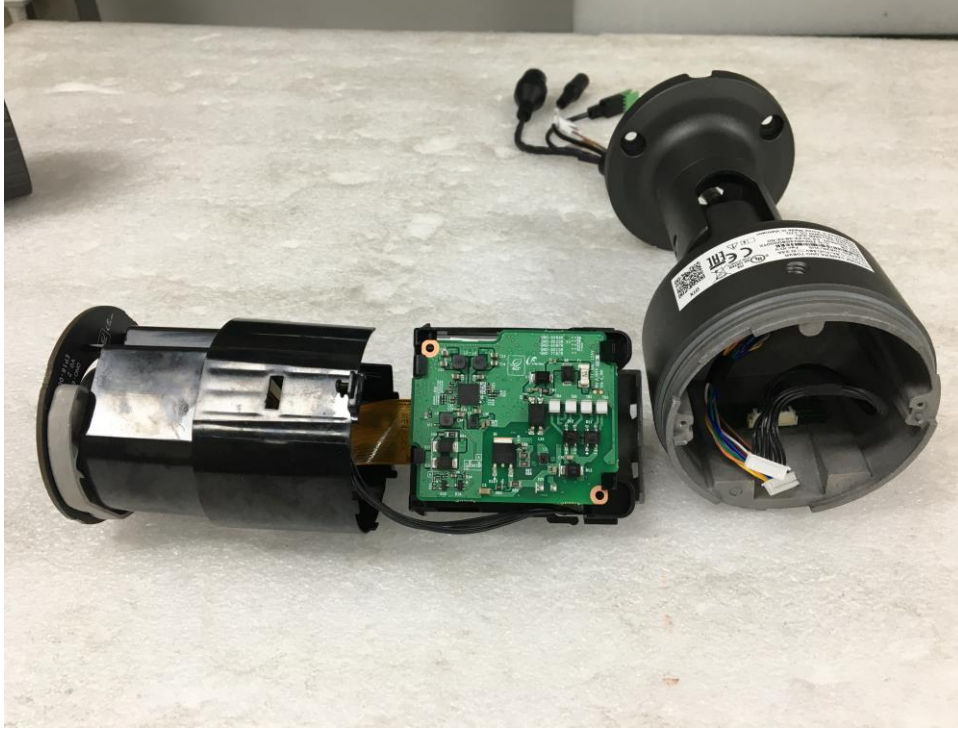
(Bottom)



This report shall not be reproduced except in full, without the written approval of KES Co., Ltd.  
The results shown in this test report refer only to the sample(s) tested unless otherwise stated.  
The authenticity of the test report, contact kes@kes.co.kr

## EUT Internal Photographs

(Internal View)



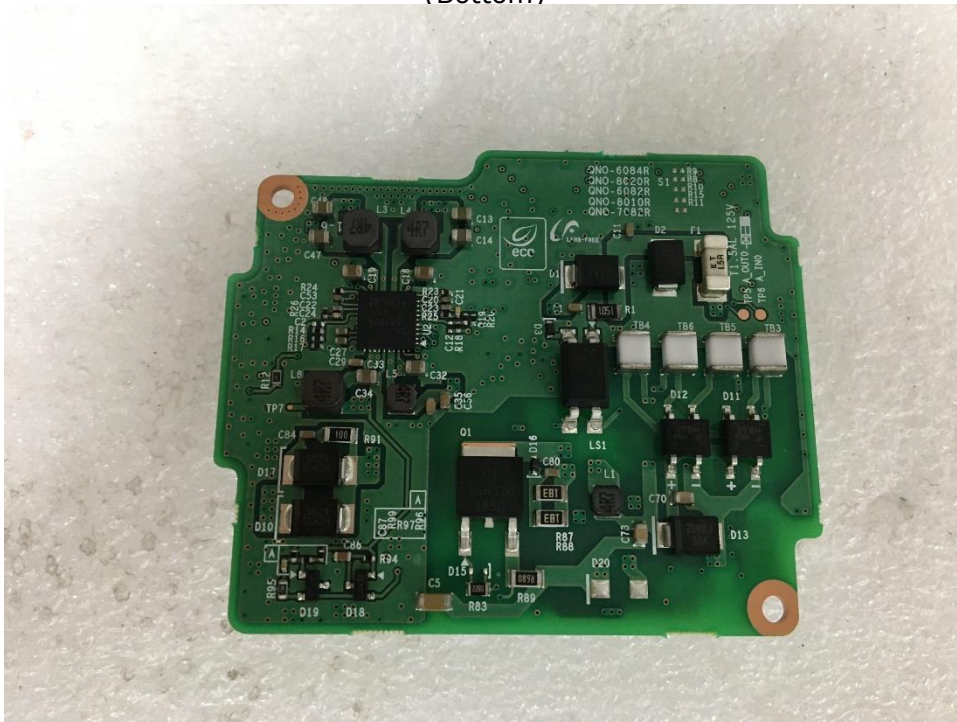
This report shall not be reproduced except in full, without the written approval of KES Co., Ltd.  
The results shown in this test report refer only to the sample(s) tested unless otherwise stated.  
The authenticity of the test report, contact kes@kes.co.kr

## EUT Internal View – Board 1

(Top)



(Bottom)



This report shall not be reproduced except in full, without the written approval of KES Co., Ltd.  
The results shown in this test report refer only to the sample(s) tested unless otherwise stated.  
The authenticity of the test report, contact kes@kes.co.kr

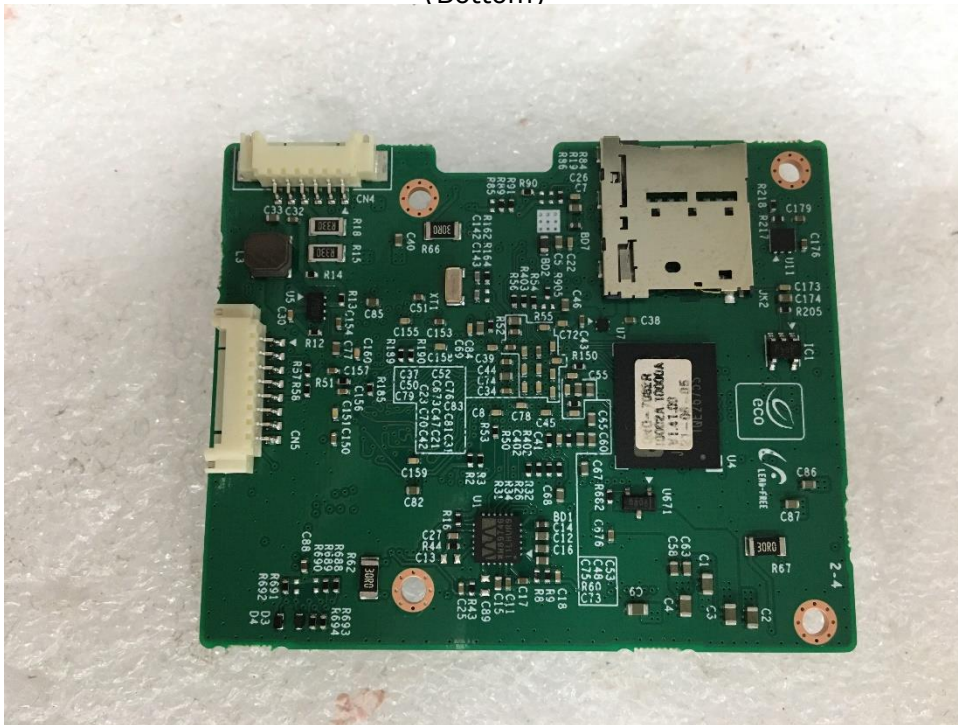


## EUT Internal View – Board 2

(Top)



(Bottom)



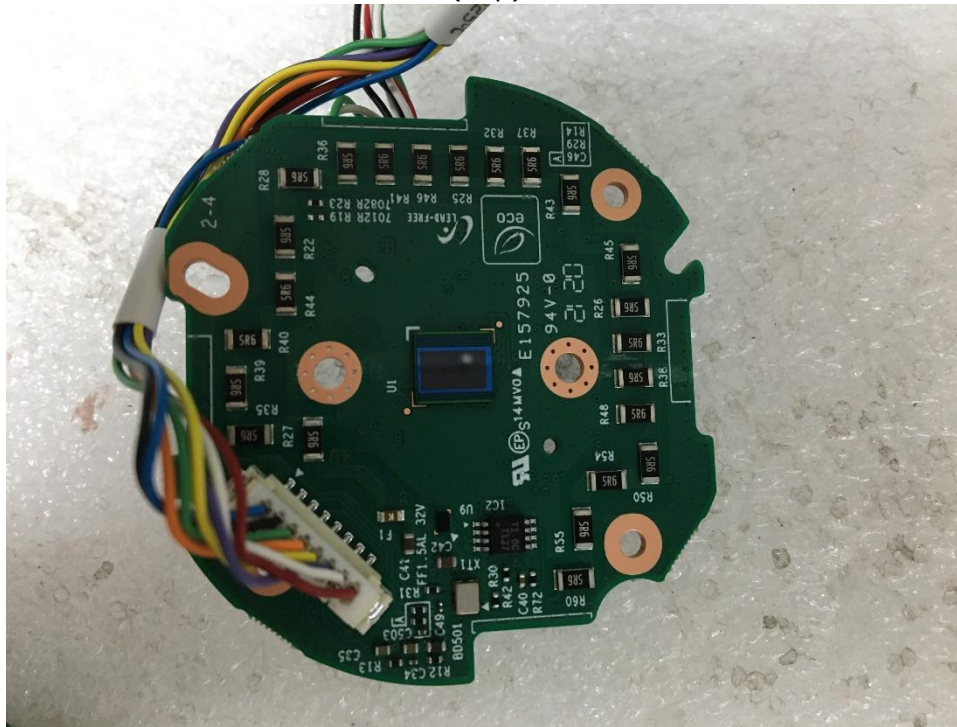
This report shall not be reproduced except in full, without the written approval of KES Co., Ltd.

The results shown in this test report refer only to the sample(s) tested unless otherwise stated.

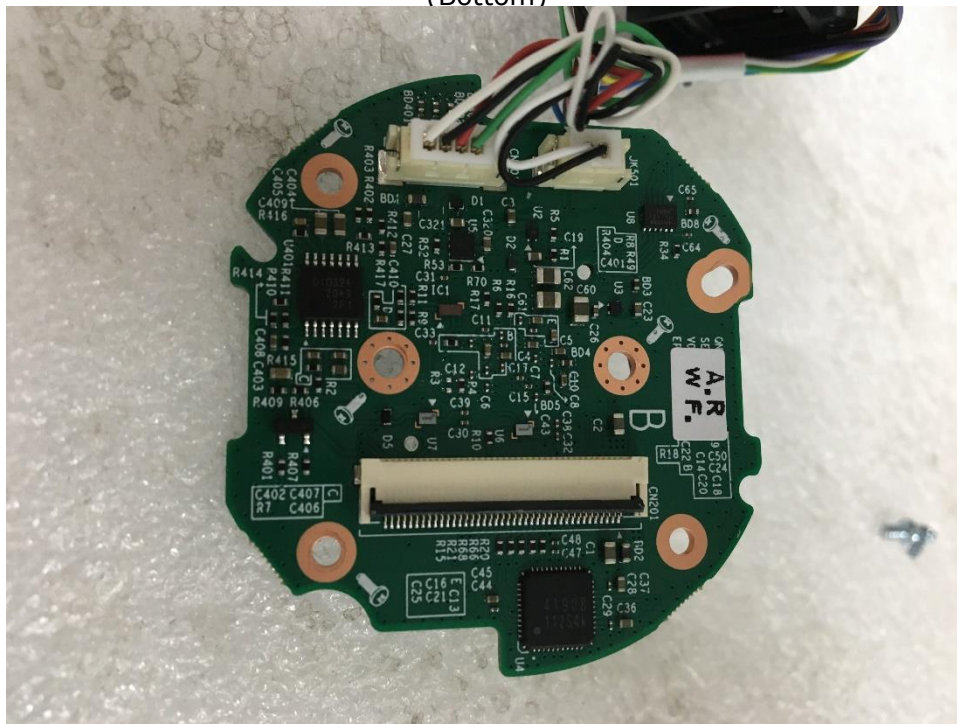
The authenticity of the test report, contact kes@kes.co.kr

## EUT Internal View – Board 3

(Top)



(Bottom)



This report shall not be reproduced except in full, without the written approval of KES Co., Ltd.  
 The results shown in this test report refer only to the sample(s) tested unless otherwise stated.  
 The authenticity of the test report, contact kes@kes.co.kr

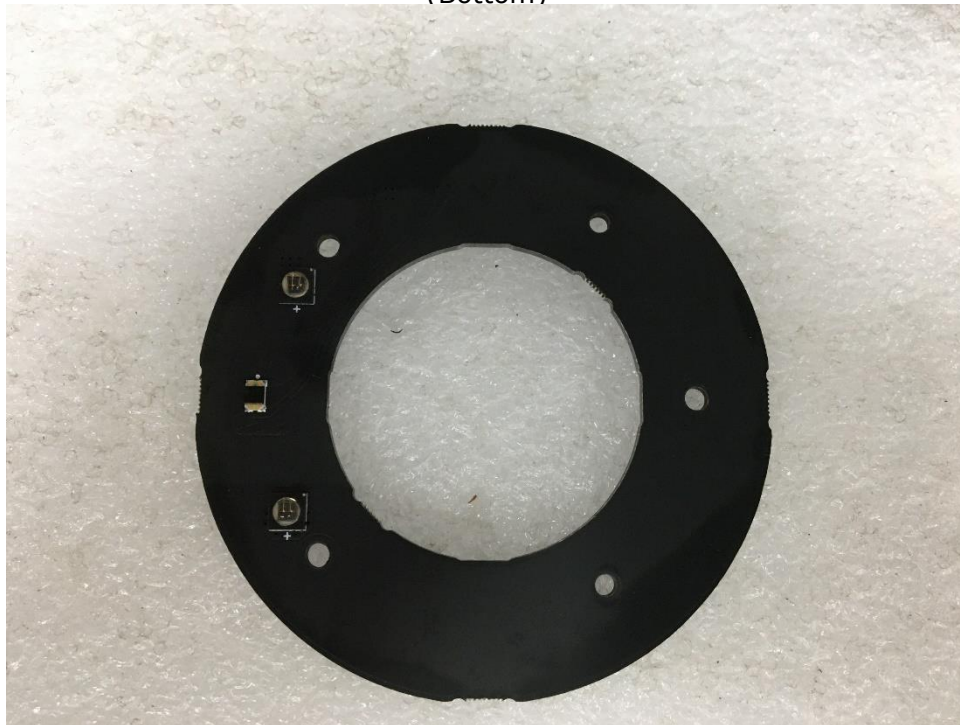


## EUT Internal View – Board 4

(Top)



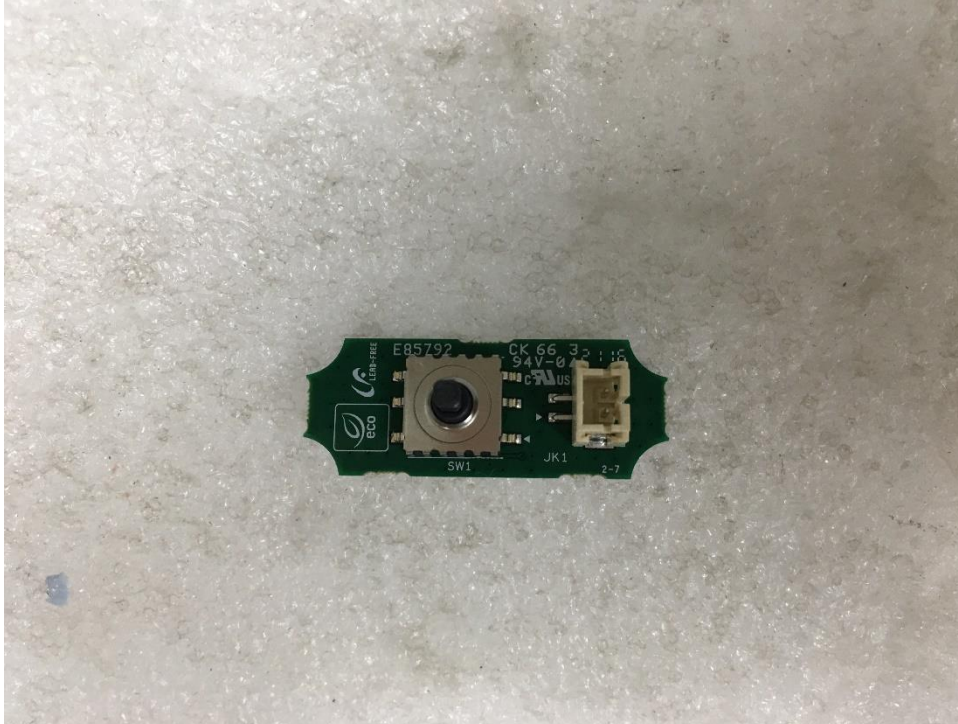
(Bottom)



This report shall not be reproduced except in full, without the written approval of KES Co., Ltd.  
The results shown in this test report refer only to the sample(s) tested unless otherwise stated.  
The authenticity of the test report, contact kes@kes.co.kr

**EUT Internal View – Board 5**

(Top)



(Bottom)



This report shall not be reproduced except in full, without the written approval of KES Co., Ltd.  
The results shown in this test report refer only to the sample(s) tested unless otherwise stated.  
The authenticity of the test report, contact kes@kes.co.kr

## Label Photographs



この装置は、クラスA情報技術装置です。この装置を家庭環境で使用すると電波妨害を引き起こすことがあります。この場合には使用者が適切な対策を講ずるよう要求されることがあります。

VCCI-A