



EMC TEST REPORT For CE

Test Report No. : KES-EM-21T0627-R1
Date of Issue : Feb. 24, 2023
Product name : NETWORK CAMERA
Model/Type No. : QNO-7032R
Variant Model : QNO-7022R, QNO-7012R
Applicant : Hanwha Vision Co., Ltd
Applicant Address : 6, Pangyo-ro 319Beon-gil, Bundang-gu, Seongnam-si,
Gyeonggi-do, Republic of Korea
Manufacturer : 1. HANWHA VISION VIETNAM COMPANY LIMITED
2. D-TECH CO.,LTD.
Manufacturer Address : 1. Lot O-2, Que Vo Industrial Zone extended area,
Nam Son commune, Bac Ninh city, Bac Ninh province, Vietnam
2. 173-25, Saneop-ro, Gwonseon-gu, Suwon-si, Gyeonggi- do,
Korea (Suwon Industrial Complex)
Date of Receipt : Jun. 23, 2021
Test date : Jul. 11, 2021 ~ Jul. 15, 2021
Test Results : ☒ **In Compliance** ☐ **Not in Compliance**

Tested by

Sung Keun, Park
EMC Test Engineer

Reviewed by

Dong-Hun, Jang
EMC Technical Manager

Tested by Ki Man, Kim
(Retired person)
Proxy signature : SungKeun, Park

This test report is not related to KS Q ISO/IEC 17025 and KOLAS.

**KES Co., Ltd.**

3701, 40, Simin-daero 365beon-gil,
Dongan-gu, Anyang-si, Gyeonggi-do, 14057, Korea
Tel: +82-31-425-6200 / Fax: +82-31-424-0450
www.kes.co.kr

Report No.:

KES-EM-21T0627-R1

Page (2) of (73)

REPORT REVISION HISTORY

Date	Test Report No.	Revision History
Jul. 21, 2021	KES-EM-21T0627	Issued
Feb. 24, 2023	KES-EM-21T0627-R1	Change the Applicant and manufacturer at the request of the customer

This report shall not be reproduced except in full, without the written approval of KES Co., Ltd. This document may be altered or revised by KES Co., Ltd. personnel only, and shall be noted in the revision section of the document. Any alteration of this document not carried out by KES Co., Ltd. will constitute fraud and shall nullify the document.

This report shall not be reproduced except in full, without the written approval of KES Co., Ltd.
The results shown in this test report refer only to the sample(s) tested unless otherwise stated.
The authenticity of the test report, contact kes@kes.co.kr



TABLE OF CONTENTS

1.0	General Product Description	4
1.1	Test Voltage & Frequency	6
1.2	Variant Model Differences.....	6
1.3	Device Modifications	6
1.4	Equipment Under Test.....	6
1.5	Support Equipments	6
1.6	External I/O Cabling	7
1.7	EUT Operating Mode(s)	8
1.8	Configuration.....	9
1.9	Remarks when standards applied	10
1.10	Calibration Details of Equipment Used for Measurement	10
1.11	Test Facility	10
1.12	Laboratory Accreditations and Listings	10
2.0	Test Regulations.....	11
2.1	Conducted Emissions at Mains Power Ports	13
2.2	Conducted Emissions at Telecommunication Ports	14
2.3	Radiated Electric Field Emissions(Below 1 GHz)	15
2.4	Radiated Electric Field Emissions(Above 1 GHz)	16
2.5	Harmonic Current Emissions	17
2.6	Voltage Fluctuations and Flicker	18
3.0	Criteria for compliance	19
3.1	Electrostatic Discharge.....	21
3.2	Radiated Electric Field Immunity	25
3.3	Electrical Fast Transients/Bursts	28
3.4	Surge Transients	31
3.5	Conducted Disturbance	35
3.6	Voltage Dips and Short Interruptions	39
APPENDIX A – TEST DATA.....		41
Conducted Emissions at Mains Power Ports.....		41
Conducted Emissions at Telecommunication Ports		43
Radiated Electric Field Emissions(Below 1 GHz)		45
Radiated Electric Field Emissions(Above 1 GHz)		47
Harmonic Current Emissions and Voltage Fluctuations and Flicker		49
Test Setup Photos and Configuration		52
Conducted Emissions at Mains Power Ports.....		52
Conducted Emissions at Telecommunication Ports		53
Radiated Electric Field Emissions(Below 1 GHz)		55
Radiated Electric Field Emissions(Above 1 GHz)		57
Harmonic Current Emissions and Voltage Fluctuations and Flicker		59
Electrostatic Discharge		60
Radiated Electric Field Immunity		61
Electrical Fast Transients/Bursts		62
Surge Transients		63
Conducted Disturbance		64
Voltage Dips and Short Interruptions.....		65
EUT External Photographs		66
EUT Internal Photographs		67



KES Co., Ltd.

3701, 40, Simin-daero 365beon-gil,
Dongan-gu, Anyang-si, Gyeonggi-do, 14057, Korea
Tel: +82-31-425-6200 / Fax: +82-31-424-0450
www.kes.co.kr

Report No.:
KES-EM-21T0627-R1
Page (4) of (73)

1.0 General Product Description

Main Specifications of EUT are:

Video	
Imaging Device	1/3" CMOS
Resolution	2560 x 1440, 1920 x 1080, 1280 x 960, 1280 x 720, 800 x 600, 800 x 448, 720 x 576, 720 x 480, 640 x 480, 640 x 360, 320 x 240
Max. Framerate	H.265/H.264 : Max. 30fps at 4M all resolutions, MJPEG : Max. 15fps
NETD	None
Pixel Size	None
Min. Illumination	Color : 0.15Lux (F2.0, 1/30sec) B/W : 0Lux (IR LED On)
Video Out	CVBS : 1.0 Vpp/75Ω composite, 720x480(N), 720x576(P) for installation
Video Transmission Distance	None
Lens	
Focal Length (Zoom Ratio)	6mm fixed focal
Max. Aperture Ratio	F2.0
Angular Field of View	H : 49.0°, V : 27.6°, D : 55.6°
Min. Object Distance	None
Focus Control	Fixed
Lens Type	None
Mount Type	None
Optional Lens	None
Pan / Tilt / Rotate	
Pan / Tilt / Rotate Range	None
Pan Range	None
Pan Speed	None
Tilt Range	None
Tilt Speed	None
Rotate Range	None
Sequence	None
Preset Accuracy	None
Operational	
Camera Title	Displayed up to 85 characters
Direction Indicator	None
Day & Night	Auto(ICR)
Backlight Compensation	BLC, WDR, SSDR
Wide Dynamic Range	120dB
Digital Noise Reduction	SSNR
Digital Image Stabilization	None
Defog	None
Motion Detection	4ea, polygonal zones
Privacy Masking	6ea, rectangular zones
Gain Control	Low / Middle / High
White Balance	ATW / AWC / Manual / Indoor / Outdoor
LDC	Support
Electronic Shutter Speed	Minimum/Maximum/Anti flicker (1/5~1/12,000sec)
Digital PTZ	None
Video Rotation	Flip, Mirror, Hallway view(90°/270°)
Analytics	Defocus detection, Directional detection, Motion detection, Enter/Exit, Tampering, Virtual line
Business Intelligence	None
Serial Interface	None
Alarm I/O	Input 1ea / Output 1ea
Alarm Triggers	Analytics, Network disconnect, Alarm input
Alarm Events	File upload via FTP and e-mail, Notification via e-mail, SD/SDHC/SDXC or NAS recording at event triggers, Alarm output, Handover
Audio In	Selectable(mic in/line in)

This report shall not be reproduced except in full, without the written approval of KES Co., Ltd.
The results shown in this test report refer only to the sample(s) tested unless otherwise stated.
The authenticity of the test report, contact kes@kes.co.kr



KES Co., Ltd.

3701, 40, Simin-daero 365beon-gil,
Dongan-gu, Anyang-si, Gyeonggi-do, 14057, Korea
Tel: +82-31-425-6200 / Fax: +82-31-424-0450
www.kes.co.kr

Report No.:

KES-EM-21T0627-R1

Page (5) of (73)

	Supply voltage: 2.5VDC(4mA), Input impedance: 2K Ohm
Audio Out	None
IR Viewable Length	30m (98.42ft)
IR Illuminator (Optional)	None
Water Removal	None
Auto Tracking	None
Coaxial Protocol	None
Color Palettes	None
Radiometry	
Temperature Detect Range	None
Temperature Accuracy	None
Temperature Detection	None
Additional	None
Network	
Ethernet	RJ-45 (10/100BASE-T)
Video Compression	H.265/H.264 : Main/High, MJPEG
Audio Compression	G.711 u-law / G.726 Selectable G.726(ADPCM) 8KHz, G.711 8KHz, G.726 16Kbps, 24Kbps, 32Kbps, 40Kbps
Smart Codec	Manual (5ea area), WiseStream II
Video Quality Adjustment	H.265/H.264 : Target bitrate level control, MJPEG : Quality level control
Bitrate Control	H.264/H.265 : CBR or VBR MJPEG : VBR
Streaming	Unicast (6 users) / Multicast Multiple streaming (Up to 3 profiles)
Protocol	IPv4, IPv6, TCP/IP, UDP/IP, RTP(UDP), RTP(TCP), RTCP, RTSP, NTP, HTTP, HTTPS, SSL/TLS, DHCP, PPPoE, FTP, SMTP, ICMP, IGMP, SNMPv1/v2c/v3(MIB-2), ARP, DNS, DDNS, QoS, PIM-SM, UPnP, Bonjour, LLDP
Security	HTTPS(SSL) Login Authentication Digest Login Authentication IP Address Filtering User access Log 802.1X Authentication
Application Programming Interface	ONVIF Profile S/G/T, SUNAPI (HTTP API)
General	
Webpage Language	English, Korean, Chinese, French, Italian, Spanish, German, Japanese, Russian, Swedish, Portuguese, Czech, Polish, Turkish, Dutch, Hungarian, Greek
Web Viewer	
Edge Storage	Micro SD/SDHC/SDXC 1slot 128GB
Memory	512MB RAM, 256MB Flash
Environmental & Electrical	
Operating Temperature / Humidity	-40°C~+55°C (-40°F~+131°F) / Less than 95% RH * Start up should be done at -30°C or above
Storage Temperature / Humidity	-40°C~+60°C (-40°F~+140°F) / Less than 95% RH
Certification	IP66, IK10
Input Voltage	PoE(IEEE802.3af, Class3), 12VDC
Power Consumption	PoE: Max 10.7W, typical 8W 12VDC: Max 9.1W, typical 6.8W
Mechanical	
Color / Material	Dark grey / Aluminum
RAL Code	
Product Dimensions / Weight	Ø70.0 x 246.0mm (Ø2.76 x 9.69"), 700g (1.543 lb)

This report shall not be reproduced except in full, without the written approval of KES Co., Ltd.
The results shown in this test report refer only to the sample(s) tested unless otherwise stated.
The authenticity of the test report, contact kes@kes.co.kr



1.1 Test Voltage & Frequency

Unless indicated otherwise on the individual data sheet or test results, the test voltage and frequency was as indicated below.

☒ AC 230 V, 50Hz ☒ PoE

1.2 Variant Model Differences

Addition of derivative models for place of sale management

1.3 Device Modifications

Not applicable

1.4 Equipment Under Test

Description	Model Number	Serial Number	Manufacturer	Remarks
NETWORK CAMERA	QNO-7032R	-	HANWHA VISION VIETNAM COMPANY LIMITED	EUT

1.5 Support Equipments

Description	Model Number	Serial Number	Manufacturer	Remarks
Adaptor	2ACB022F	-	Channel Well Technology (Guangzhou) Co., Ltd.	-
PoE Adaptor	PT-PSE109GBRO-AH	PT1850221049	Dongguan PROCET Network Technology Co.,Ltd	-
Notebook	LG15N54	410NZGK015231	LG	-
Notebook Adaptor	ADP-90WH B	84ZW19F1663	DELTA ELECTRONICS (JIANGSU) LTD.	-
Alarm1	-	-	-	-
Alarm2	-	-	-	-
Micro SD Card	-	-	Sandisk	8 GB
MIC	MP1000	-	-	-

1.6 External I/O Cabling

■ DC Mode

Start		END		Cable Spec.	
Description	I/O Port	Description	I/O Port	Length	Shield
NETWORK CAMERA (EUT)	RJ-45 (LAN)	Notebook	RJ-45 (LAN)	3.0	U
	Slot	Micro SD Card	Slot	-	-
	2 Pin	Alarm1	2 Pin	3.0	U
	2 Pin	Alarm2	2 Pin	3.0	U
	3.5 mm	MIC	3.5 mm	1.7	U
	2 Pin	Adaptor	2 Pin	1.6	U
Notebook	JACK	Notebook Adaptor	JACK	1.7	U

* Unshielded=U, Shielded=S

■ PoE Mode

Start		END		Cable Spec.	
Description	I/O Port	Description	I/O Port	Length	Shield
NETWORK CAMERA (EUT)	RJ-45 (PoE)	PoE Adaptor	RJ-45 (PoE)	3.0	U
	Slot	Micro SD Card	Slot	-	-
	2 Pin	Alarm1	2 Pin	3.0	U
	2 Pin	Alarm2	2 Pin	3.0	U
	3.5 mm	MIC	3.5 mm	1.7	U
Notebook	RJ-45 (LAN)	PoE Adaptor	RJ-45 (LAN)	3.5	U
	JACK	Notebook Adaptor	JACK	1.7	U

* Unshielded=U, Shielded=S

**KES Co., Ltd.**

3701, 40, Simin-daero 365beon-gil,
Dongan-gu, Anyang-si, Gyeonggi-do, 14057, Korea
Tel: +82-31-425-6200 / Fax: +82-31-424-0450
www.kes.co.kr

Report No.:
KES-EM-21T0627-R1
Page (8) of (73)

1.7 EUT Operating Mode(s)

Test Mode	operating
DC Mode	EUT Monitoring, Ping Test
PoE Mode	

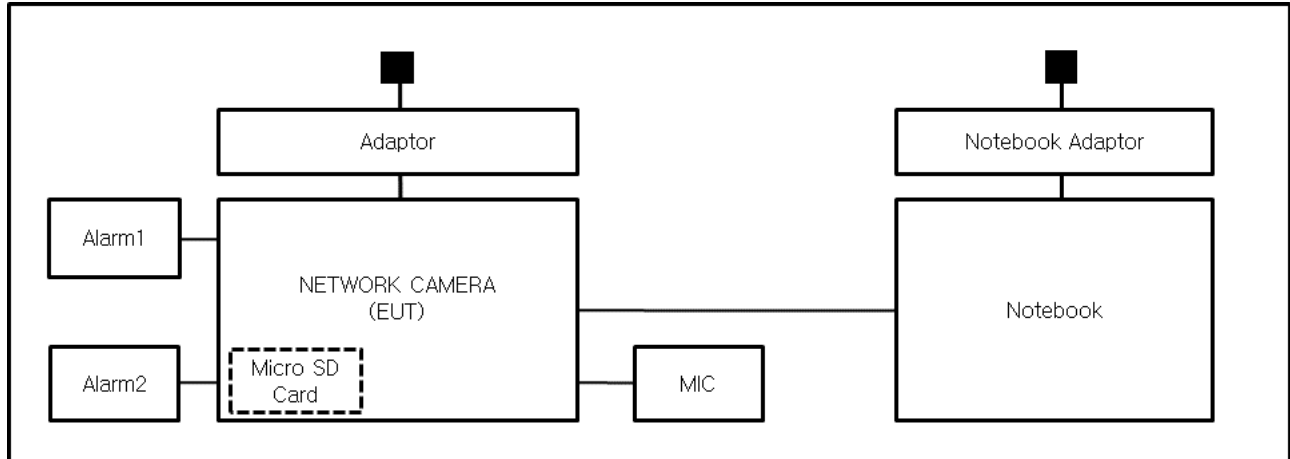
EUT Test operating S/W		
Name	Version	Manufacture Company
Web Viewer	-	Hanwha Vision Co., Ltd

This report shall not be reproduced except in full, without the written approval of KES Co., Ltd.
The results shown in this test report refer only to the sample(s) tested unless otherwise stated.
The authenticity of the test report, contact kes@kes.co.kr

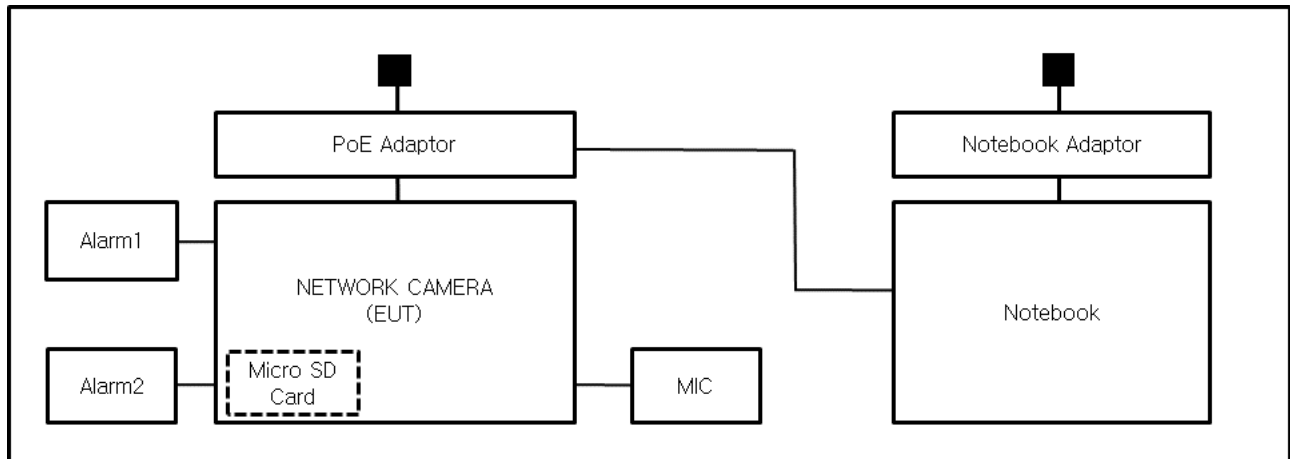
1.8 Configuration

■ AC Main
 □ DC Main

■ DC Mode



■ PoE Mode



1.9 Remarks when standards applied

N/A







1.10 Calibration Details of Equipment Used for Measurement

Test equipment and test accessories are calibrated on regular basis. The maximum time between calibrations is one year or what is recommended by the manufacturer, whichever is less.

1.11 Test Facility

The measurement facility is located at 473-21, Gayeo-ro, Yeosu-si, Gyeonggi-do, 12658, Korea, Republic of. The sites are constructed in conformance with the requirements of ANSI C63.4a-2017 and CISPR 16-1-4:2019

1.12 Laboratory Accreditations and Listings

Country	Agency	Scope of Accreditation	Logo
KOREA	RRA	EMI (3 m & 10 m Semi-Anechoic Chamber and conducted test site) EMS (ESD, RS, EFT/Burst, Surge, CS, Magnetic, Dips and interruptions)	 KR0100
International	KOLAS	EMI (3 m & 10 m Semi-Anechoic Chamber and conducted test site) EMS (ESD, RS, EFT/Burst, Surge, CS, Magnetic, Dips and interruptions)	 KT489
USA	FCC	3 m & 10 m Semi-Anechoic Chamber Conducted test site to perform FCC Part 15/18 measurements.	 KR0100
Canada	ISED	3 m & 10 m Semi-Anechoic Chamber and Conducted test site	 23298
JAPAN	VCCI	EMI (3 m & 10 m Semi-Anechoic Chamber and conducted test site)	 C-20136, T-20137, R-20181, G-20176
Europe	TÜV SÜD	EMI (3 m & 10 m Semi-Anechoic Chamber and conducted test site) EMS (ESD, RS, EFT/Burst, Surge, CS, Magnetic, Dips and interruptions)	 CARAT 001633 0004

2.0 Test Regulations

The emissions tests were performed according to following regulations:

☒ **EMC – Directive 2014/30/EU**

☐ EN 61000-6-3:2011

☐ EN 61000-6-1:2007

☐ EN 61000-6-4:2007 +A1:2011

☐ EN 61000-6-2:2005

☐ EN 55011:2007 +A1:2010

☐ Group 1
☐ Class A

☐ Group 2
☐ Class B

☐ EN 55014-1:2006 +A2:2011

☐ EN 55014-2:1997 +A2:2008

☐ EN 55015:2013

☐ EN 61547:2009

☒ EN 55032:2015/A11:2020

☒ Class A

☐ Class B

☐ EN 55024:2010 +A1:2015

☒ EN 50130-4:2011

☒ EN 61000-3-2:2014

☒ EN 61000-3-3:2013

☐ EN 61326-1:2013

☒ **EMC – Regulations 2016/1091**

☒ BS EN 55032:2015/A11:2020

☒ Class A

☐ Class B

☒ BS EN 50130-4:2011

☒ BS EN 61000-3-2:2014

☒ BS EN 61000-3-3:2013



KES Co., Ltd.

3701, 40, Simin-daero 365beon-gil,
Dongan-gu, Anyang-si, Gyeonggi-do, 14057, Korea
Tel: +82-31-425-6200 / Fax: +82-31-424-0450
www.kes.co.kr

Report No.:
KES-EM-21T0627-R1
Page (12) of (73)

-
- | | | |
|---|----------------------------------|----------------------------------|
| <input type="checkbox"/> VCCI-CISPR 32:2016 | <input type="checkbox"/> Class A | <input type="checkbox"/> Class B |
| <input type="checkbox"/> AS/NZS CISPR32:2015 | <input type="checkbox"/> Class A | <input type="checkbox"/> Class B |
| <input type="checkbox"/> 47 CFR Part 15, Subpart B | | |
| <input type="checkbox"/> CISPR 22:2009 +A1:2010 | <input type="checkbox"/> Class A | <input type="checkbox"/> Class B |
| <input type="checkbox"/> ANSI C63.4-2014 | | |
| <input type="checkbox"/> IC Regulation ICES-003 : 2016 | | |
| <input type="checkbox"/> CAN/CSA CISPR 22-10 | <input type="checkbox"/> Class A | <input type="checkbox"/> Class B |
| <input type="checkbox"/> ANSI C63.4-2014 | | |
| <input type="checkbox"/> RE- Directive 2014/53/EU | | |
| <input type="checkbox"/> EN 301 489-1 V1.9.2 | | |
| <input type="checkbox"/> Equipment for fixed use | | |
| <input type="checkbox"/> Equipment for vehicular use | | |
| <input type="checkbox"/> Equipment for portable use | | |
| <input type="checkbox"/> EN 301 489-3 V1.6.1 | | |
| <input type="checkbox"/> EN 301 489-17 V2.2.1 | | |
| <input type="checkbox"/> EN 60945:2002 | | |

This report shall not be reproduced except in full, without the written approval of KES Co., Ltd.
The results shown in this test report refer only to the sample(s) tested unless otherwise stated.
The authenticity of the test report, contact kes@kes.co.kr



2.1 Conducted Emissions at Mains Power Ports

Test Date

Jul. 11, 2021

Test Location

Electro wave Shieldroom #6

Test Equipment

Used	Description	Model Number	Manufacturer	Serial Number	Cal. Due
<input checked="" type="checkbox"/>	EMI Test S/W	EMC32	R & S	9.12.00	-
<input checked="" type="checkbox"/>	EMI TEST RECEIVER	ESR3	R & S	101783	01, 15, 2022
<input checked="" type="checkbox"/>	LISN	ENV216	R & S	101787	12, 29, 2021
<input checked="" type="checkbox"/>	LISN	ESH2-Z5	R & S	100450	12, 29, 2021
<input checked="" type="checkbox"/>	PULSE LIMITER	ESH3-Z2	R & S	101915	12, 29, 2021

Test Conditions

Temperature: (25,0 ± 0,1) °C

Relative Humidity: (47,3 ± 0,1) % R.H.

Frequency Range of Measurement

150 kHz to 30 MHz

Instrument Settings

IF Band Width: 9 kHz

Test Results

The requirements are:

- ☒ PASS
☐ NOT PASS
☐ NOT APPLICABLE

Remarks

See Appendix A for test data.



2.2 Conducted Emissions at Telecommunication Ports

Test Date

Jul. 11, 2021

Test Location

Electro wave Shieldroom #6

Test Equipment

Used	Description	Model Number	Manufacturer	Serial Number	Cal. Due
<input checked="" type="checkbox"/>	EMI Test S/W	EMC32	R & S	9.12.00	-
<input checked="" type="checkbox"/>	EMI TEST RECEIVER	ESR3	R & S	101783	01, 15, 2022
<input checked="" type="checkbox"/>	LISN	ENV216	R & S	101787	12, 29, 2021
<input checked="" type="checkbox"/>	LISN	ESH2-Z5	R & S	100450	12, 29, 2021
<input checked="" type="checkbox"/>	PULSE LIMITER	ESH3-Z2	R & S	101915	12, 29, 2021
<input checked="" type="checkbox"/>	8-WIRE ISN CAT3,5	ENY81	R & S	100174	12, 30, 2021
<input type="checkbox"/>	8-WIRE ISN CAT6	ENY81-CAT6	R & S	101665	12, 30, 2021
<input type="checkbox"/>	ISN	ISN S8	SCHWARZBECK	ISN-S8-0019	12, 29, 2021

Test Conditions

Temperature: (25,0 ± 0,2) °C

Relative Humidity: (47,3 ± 0,2) % R.H.

Frequency Range of Measurement

150 kHz to 30 MHz

Instrument Settings

IF Band Width: 9 kHz

Test Results

The requirements are:

- ☒ PASS
☐ NOT PASS
☐ NOT APPLICABLE

Remarks

See Appendix A for test data.

For Ethernet interfaces, measurements are required at the highest data rate supported by the interface.



2.3 Radiated Electric Field Emissions(Below 1 GHz)

Test Date

Jul. 11, 2021

Test Location

☐ OPEN AREA TEST SITE #2 ☒ SEMI ANECHOIC CHAMBER #4(10m)

Test Equipment

Used	Description	Model Number	Manufacturer	Serial Number	Cal. Due
<input checked="" type="checkbox"/>	EMI Test S/W	EP5/RE	TOYO Corporation	6.0.0	-
<input checked="" type="checkbox"/>	EMI TEST RECEIVER	ESU26	R & S	100551	04, 01, 2022
<input checked="" type="checkbox"/>	AMPLIFIER	SCU 01	R & S	100603	11, 25, 2021
<input checked="" type="checkbox"/>	TRILOG-BROADBAND ANTENNA	VULB9163	Schwarzbeck	715	12, 08, 2022
<input checked="" type="checkbox"/>	ATTENUATOR	8491A	HP	32173	03, 10, 2022

Test Conditions

Temperature: (24,4 ± 0,2) °C
Relative Humidity: (47,2 ± 0,3) % R.H.

Frequency Range of Measurement

30 MHz to 1 GHz

Instrument Settings

IF Band Width: 120 kHz

Test Results

The requirements are:

☒ PASS
☐ NOT PASS
☐ NOT APPLICABLE

Remarks

See Appendix A for test data.



2.4 Radiated Electric Field Emissions(Above 1 GHz)

Test Date

Jul. 12, 2021

Test Location

SEMI ANECHOIC CHAMBER #3

Test Equipment

Used	Description	Model Number	Manufacturer	Serial Number	Cal. Due
<input checked="" type="checkbox"/>	EMI Test S/W	EP5/RE	TOYO Corporation	6.0.0	-
<input checked="" type="checkbox"/>	EMI TEST RECEIVER	ESR7	R & S	101190	08, 05, 2021
<input checked="" type="checkbox"/>	PREAMPLIFIER	8449B	AGILENT	3008A01967	04, 07, 2022
<input type="checkbox"/>	ATTENUATOR	8491A	HP	35496	03, 10, 2022
<input checked="" type="checkbox"/>	DOUBLE RIDGED HORN ANTENNA	SAS-571	A.H.SYSTEM,INC	781	03, 11, 2022

Test Conditions

Temperature: (25,1 ± 0,2) °C

Relative Humidity: (46,8 ± 0,3) % R.H.

Frequency Range of Measurement

1 GHz to 6 GHz

Instrument Settings

IF Band Width: 1 MHz

Test Results

The requirements are:

- ☒ PASS
☐ NOT PASS
☐ NOT APPLICABLE

Remarks

See Appendix A for test data.



2.5 Harmonic Current Emissions

Test Date

Jul. 12, 2021

Test Location

Electro wave Shieldroom #3

Test Equipment

Used	Description	Model Number	Manufacturer	Serial Number	Cal. Due
<input checked="" type="checkbox"/>	EMI Test S/W	net.control	EM TEST	2.1.4	-
<input checked="" type="checkbox"/>	DIGITAL POWER ANALYZER	DPA 500N	EM TEST	V1024106759	04, 06, 2022
<input checked="" type="checkbox"/>	POWER SOURCE	ACS 500N6	EM TEST	V1024106760	-

Test Conditions

Temperature: (23,0 ± 0,1) °C
Relative Humidity: (47,9 ± 0,1) % R.H.

Classification of Equipment for Harmonic Current Emissions

- ☒ Class A
☐ Class B
☐ Class C(Below 25 W)
☐ Class C(Above 25 W)
☐ Class D

Test Results

The requirements are:

- ☒ PASS
☐ NOT PASS
☐ NOT APPLICABLE

Remarks

See Appendix A for test data.



2.6 Voltage Fluctuations and Flicker

Test Date

Jul. 12, 2021

Test Location

Electro wave Shieldroom #3

Test Equipment

Used	Description	Model Number	Manufacturer	Serial Number	Cal. Due
<input checked="" type="checkbox"/>	EMI Test S/W	net.control	EM TEST	2.1.4	-
<input checked="" type="checkbox"/>	DIGITAL POWER ANALYZER	DPA 500N	EM TEST	V1024106759	04, 06, 2022
<input checked="" type="checkbox"/>	POWER SOURCE	ACS 500N6	EM TEST	V1024106760	-

Test Conditions

Temperature: (23,0 ± 0,2) °C
Relative Humidity: (47,9 ± 0,3) % R.H.

Test Results

The requirements are:

- ☒ PASS
☐ NOT PASS
☐ NOT APPLICABLE

Remarks

See Appendix A for test data.

3.0 Criteria for compliance

Criteria for compliance was based on the following guidelines:

EN 50130-4:2011 / BS EN 50130-4:2011 Alarm systems-Part 4: Electromagnetic compatibility

Product family standard: Immunity requirements for components of fire, intruder and social alarm systems

The variety and the diversity of the apparatus within the scope of this document makes it difficult to define precise criteria for the evaluation of the immunity test results.

If as a result of the application of the tests defined in this standard, the apparatus becomes dangerous or unsafe then the apparatus shall be deemed to have failed the test.

A functional description and a definition of performance by the manufacture and noted in the test

report, based on the following criteria:

Electrostatic discharge

There shall be no damage, malfunction or change of status due to the conditioning.

Flickering of an indicator during the application of discharge is permissible, providing that is no residual change in the EUT or any change in outputs, which could be interpreted by associated equipment as a change.

Radiated electromagnetic fields

There shall be no damage, malfunction or change of status due to the conditioning.

Flickering of an indicator during the application of discharge is permissible, providing which could be interpreted by associated equipment as a change, and no such

Flickering of indicators occurs at a field strength of 3 V/m.

For components of CCTV systems, where the picture is allowed at 10 V/m, providing.

(a) there is no permanent damage or change to EUT

(e.g. no corruption of memory or changes to programmable setting etc.)

(b) at 3 V/m, any deterioration of the picture is so minor that the system could still be used; and

(c) there is no observable deterioration of the picture at 1 V/m.

Fast transient burst / slow high energy voltage surge

There shall be no damage, malfunction or change of status due to the conditioning.
Flickering of an indicator during the application of discharge is permissible, providing
That there is no residual is permissible, providing that there is no residual change in the EUT or
any
change in outputs, which could be interpreted by associated equipment as a change.

Conducted RF immunity

There shall be no damage, malfunction or change of status due to the conditioning.
Flickering of an indicator during the application of discharge is permissible, providing
That there is no residual is permissible, providing that there is no residual change in the EUT or
any
change in outputs, which could be interpreted by associated equipment as a change,
and no such flickering of indicators oeuvres at $U = 130 \text{ dB}\mu\text{V}$.
For component of CCTV systems, where the status is monitored by observing the TV picture,
then deterioration of the picture is allowed at $U = 140 \text{ dB}\mu\text{V}$, providing:
(a) there is no permanent damage or change to the EUT
(e.g. no corruption of memory or changes to programmable settings etc.)
(b) at $U = 130 \text{ dB}\mu\text{V}$, any deterioration of the picture is so minor that the system could
still be used; and
(c) there in no observable deterioration of the picture at $U = 120 \text{ dB}\mu\text{V}$.

Voltage dip/interruption / Voltage variation

There shall be no damage, malfunction or change of status due to the conditioning.
Flickering of an indicator during the conditioning is permissible, providing that there is no
residual
change in the EUT or any change in outputs, which could be interpreted by associated
equipment
as a change. The EUT shall meet the acceptance criteria for the functional test, after the
conditioning.

3.1 Electrostatic Discharge

Reference Standard

EN 61000-4-2:2009
BS EN 61000-4-2:2009

Test Date

Jul. 15, 2021

Test Location

EMS-ESD: Electro wave Shieldroom #7

Test Equipment

Used	Description	Model Number	Manufacturer	Serial Number	Cal. Due
<input checked="" type="checkbox"/>	ESD SIMULATOR	ESS-2000	Noise Ken	ESS01Z0454	02, 01, 2022
<input checked="" type="checkbox"/>	HCP	-	KES	-	-
<input checked="" type="checkbox"/>	VCP	-	Noise Ken	-	-

Test Conditions

Temperature: (24,9 ± 0,2) °C
Relative Humidity: (46,8 ± 0,2) % R.H.
Atmospheric Pressure: (99,5 ± 0,0) kPa

Test Specifications

Discharge Factor: ≥ 1 s

Discharge Impedance: 330 ohm / 150 pF

Kind of Discharge: Air, Contact (direct and indirect)

Polarity: Positive and Negative

Number of Discharge: 10 at all locations for Air discharge
10 at all locations for Contact discharge

Discharge Voltage:	Contact <input type="checkbox"/> 2 kV <input type="checkbox"/> 4 kV <input checked="" type="checkbox"/> 6 kV <input type="checkbox"/> 8 kV <input type="checkbox"/> 15 kV	Air <input checked="" type="checkbox"/> 2 kV <input checked="" type="checkbox"/> 4 kV <input type="checkbox"/> 6 kV <input checked="" type="checkbox"/> 8 kV <input type="checkbox"/> 15 kV	HCP <input type="checkbox"/> 2 kV <input type="checkbox"/> 4 kV <input checked="" type="checkbox"/> 6 kV <input type="checkbox"/> 8 kV <input type="checkbox"/> 15 kV	VCP <input type="checkbox"/> 2 kV <input type="checkbox"/> 4 kV <input checked="" type="checkbox"/> 6 kV <input type="checkbox"/> 8 kV <input type="checkbox"/> 15 kV
--------------------	---	---	---	---

Notes: HCP: Horizontal coupling plane
VCP: Vertical coupling plane

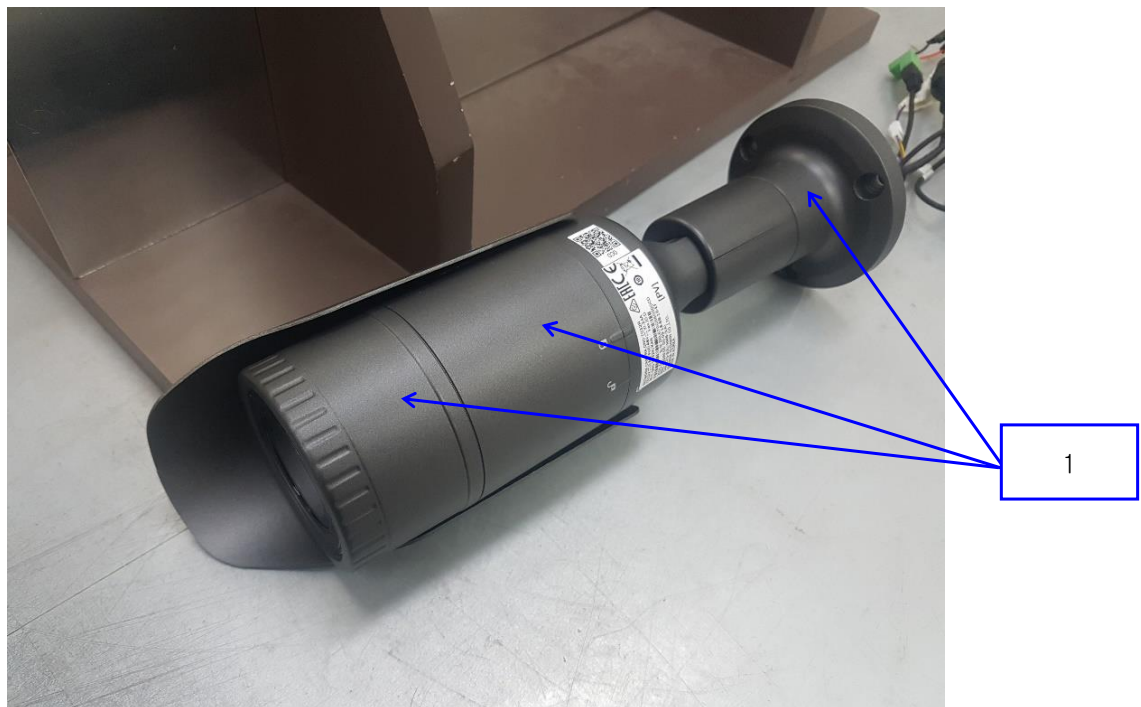
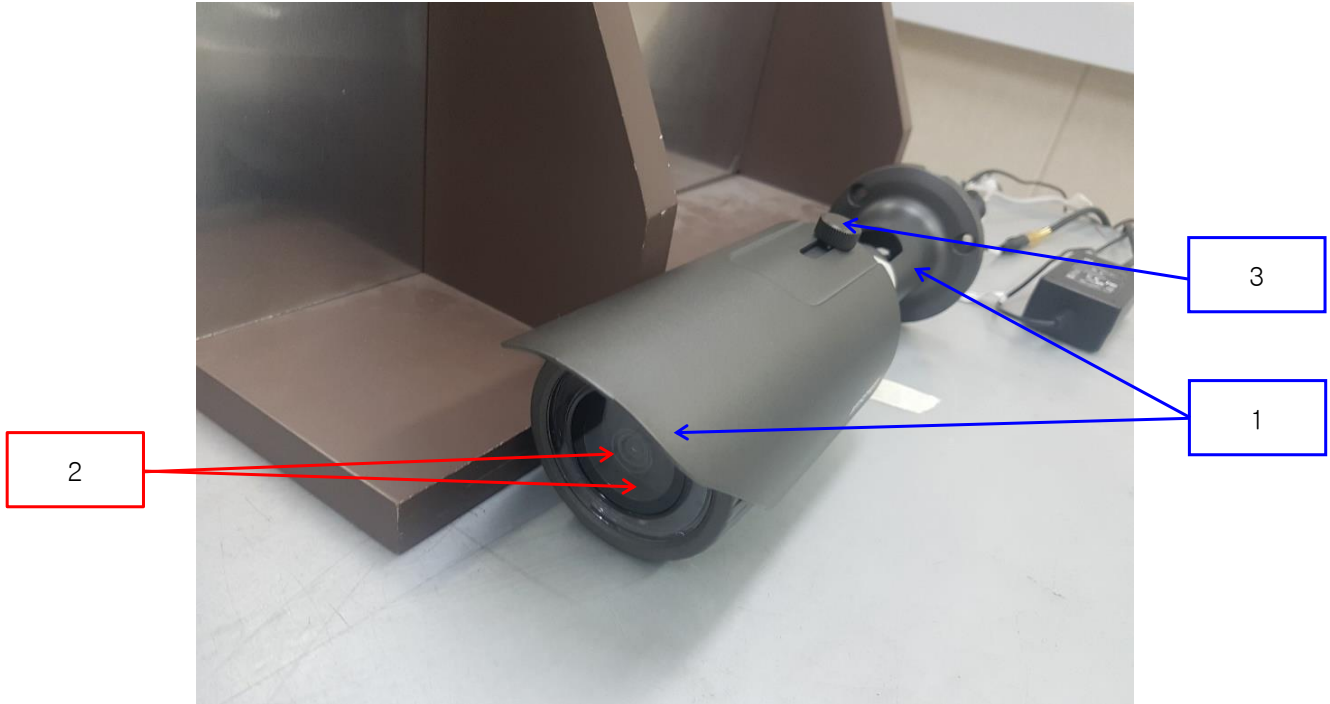
Required Performance Criteria: ☒ Complied

This report shall not be reproduced except in full, without the written approval of KES Co., Ltd.
The results shown in this test report refer only to the sample(s) tested unless otherwise stated.
The authenticity of the test report, contact kes@kes.co.kr

Location of Discharge:

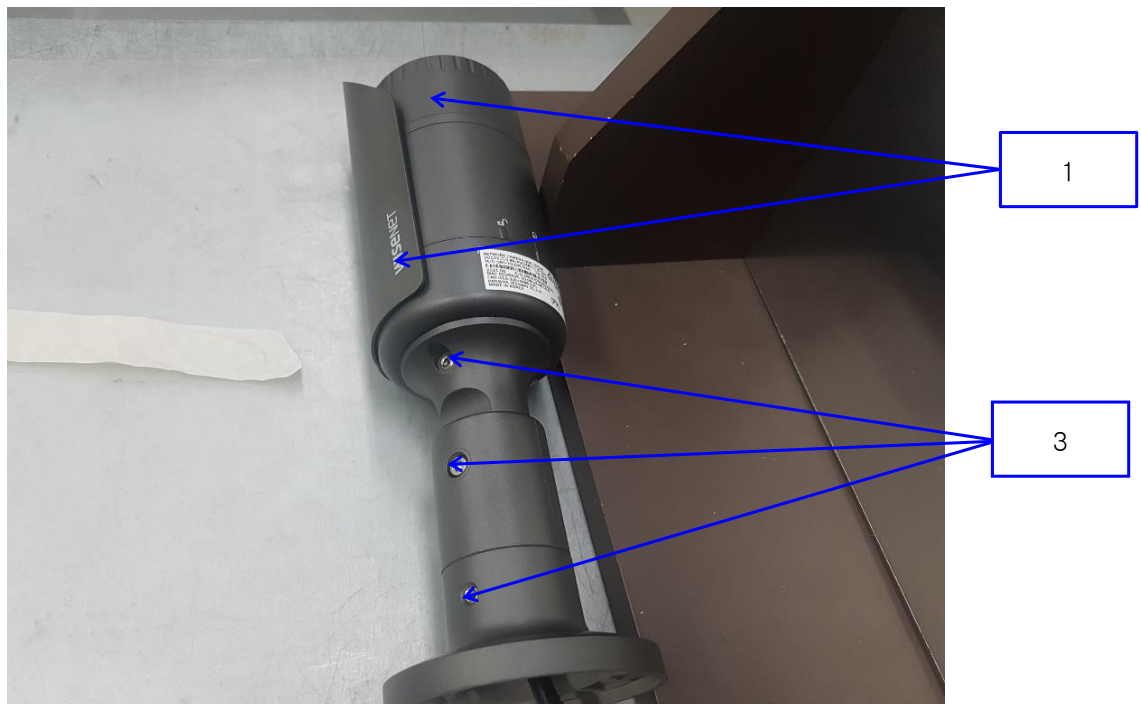
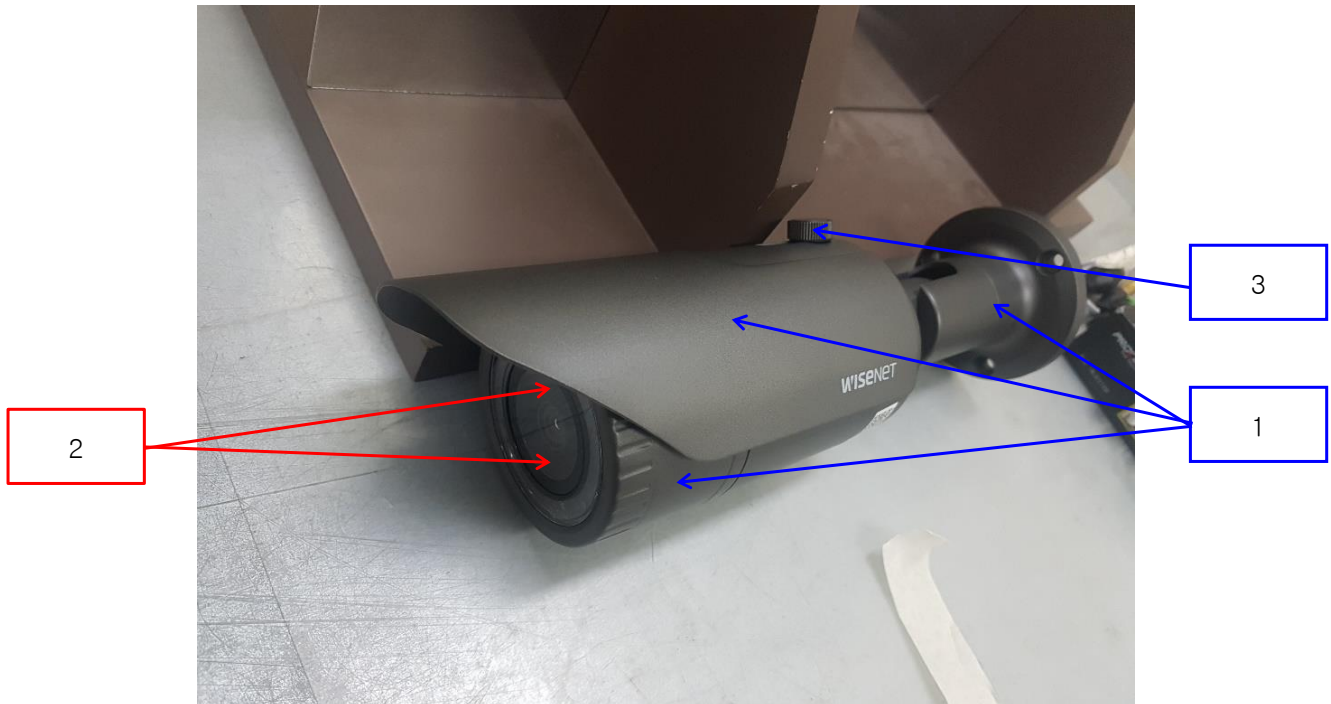
■ DC Mode

Air
Contact



This report shall not be reproduced except in full, without the written approval of KES Co., Ltd.
The results shown in this test report refer only to the sample(s) tested unless otherwise stated.
The authenticity of the test report, contact kes@kes.co.kr

■ PoE Mode



**KES Co., Ltd.**

3701, 40, Simin-daero 365beon-gil,
Dongan-gu, Anyang-si, Gyeonggi-do, 14057, Korea
Tel: +82-31-425-6200 / Fax: +82-31-424-0450
www.kes.co.kr

Report No.:
KES-EM-21T0627-R1
Page (24) of (73)

Test Data**■ DC Mode****Indirect Discharge**

No.	Test Point	Discharge Method	Observations	Remarks
1	HCP Contact	Contact Discharge	Complied	-
2	VCP Contact	Contact Discharge	Complied	-

Direct Discharge

No.	Test Point	Discharge Method	Observations	Remarks
1	Enclosure	Contact Discharge	Complied	-
2	Lens	Air Discharge	Complied	-
3	Screw	Contact Discharge	Complied	-

■ PoE Mode**Indirect Discharge**

No.	Test Point	Discharge Method	Observations	Remarks
1	HCP Contact	Contact Discharge	Complied	-
2	VCP Contact	Contact Discharge	Complied	-

Direct Discharge

No.	Test Point	Discharge Method	Observations	Remarks
1	Enclosure	Contact Discharge	Complied	-
2	Lens	Air Discharge	Complied	-
3	Screw	Contact Discharge	Complied	-

Note: "Blank" = Not performed

Observations:

Complied – No degradation of function

Test Results

- ☒ PASS Required Performance Criteria
☐ NOT PASS Required Performance Criteria

Remarks

PASS Required Performance Criteria

This report shall not be reproduced except in full, without the written approval of KES Co., Ltd.
The results shown in this test report refer only to the sample(s) tested unless otherwise stated.
The authenticity of the test report, contact kes@kes.co.kr

3.2 Radiated Electric Field Immunity

Reference Standard

EN 61000-4-3:2006 +A2:2010
BS EN 61000-4-3:2006 +A2:2010

Test Date

Jul. 14, 2021

Test Location

EMS-RS: ☐ SEMI ANECHOIC CHAMBER #2 ☒ SEMI ANECHOIC CHAMBER #3

Test Equipment

Used	Description	Model Number	Manufacturer	Serial Number	Cal. Due
<input checked="" type="checkbox"/>	EMS Test S/W	EMC32	R & S	10.10.02	-
<input checked="" type="checkbox"/>	SIGNAL GENERATOR	SMB 100A	Rohde & Schwarz	108252	08, 05, 2021
<input checked="" type="checkbox"/>	HIGH POWER DUAL AMP	SSA532	SUNGSAN	SSA532-001	-
<input checked="" type="checkbox"/>	POWER METER	E4419B	Agilent	GB40203000	04, 01, 2022
<input checked="" type="checkbox"/>	CW POWER SENSOR	E4412A	Agilent	US38488240	04, 01, 2022
<input checked="" type="checkbox"/>	CW POWER SENSOR	E4412A	Agilent	MY41501662	04, 01, 2022
<input checked="" type="checkbox"/>	STACKED DOUBLE LOG-PER- ANTENNA	STPL9128 E	Schwarzbeck	9128ES-121	-
<input checked="" type="checkbox"/>	DOUBLE RIDGED HORN ANTENNA	SAS-571	A.H.SYSTEM,INC	781	03, 11, 2022

Test Conditions

Temperature: (25,0 ± 0,4) °C
Relative Humidity: (46,8 ± 0,5) % R.H.
Atmospheric Pressure: (99,5 ± 0,0) kPa



KES Co., Ltd.

3701, 40, Simin-daero 365beon-gil,
Dongan-gu, Anyang-si, Gyeonggi-do, 14057, Korea
Tel: +82-31-425-6200 / Fax: +82-31-424-0450
www.kes.co.kr

Report No.:

KES-EM-21T0627-R1

Page (26) of (73)

Test Specifications

Antenna Polarization: Horizontal & vertical unless indicated otherwise

Antenna Distance: ☒ 3 m

Field Strength: ☐ 1 V/m ☐ 3 V/m
☒ 10 V/m

Frequency Range: ☐ 80 MHz to 1 GHz ☐ 1,4 GHz to 2,7 GHz
☒ 80 MHz to 2,7 GHz

Modulation: ☒ AM, 80 %, 1 kHz sine wave
☒ PM, 1 Hz (0,5 s ON : 0,5 s OFF)

Frequency step: ☒ 1 % step

Dwell Time: ☐ 1 s ☒ 3 s

of Sides Radiated: ☒ 4

Required Performance Criteria: ☒ Complied

This report shall not be reproduced except in full, without the written approval of KES Co., Ltd.
The results shown in this test report refer only to the sample(s) tested unless otherwise stated.
The authenticity of the test report, contact kes@kes.co.kr

**KES Co., Ltd.**

3701, 40, Simin-daero 365beon-gil,
Dongan-gu, Anyang-si, Gyeonggi-do, 14057, Korea
Tel: +82-31-425-6200 / Fax: +82-31-424-0450
www.kes.co.kr

Report No.:

KES-EM-21T0627-R1

Page (27) of (73)

Test Data

■ DC Mode

Side Exposed	Observations	
	Horizontal	Vertical
Front	Complied	Complied
Right	Complied	Complied
Back	Complied	Complied
Left	Complied	Complied

■ PoE Mode

Side Exposed	Observations	
	Horizontal	Vertical
Front	Complied	Complied
Right	Complied	Complied
Back	Complied	Complied
Left	Complied	Complied

Note: "Blank" = Not performed

Observations:

Complied – No degradation of function

Test Results

- ☒ PASS Required Performance Criteria
☐ NOT PASS Required Performance Criteria

RemarksPASS Required Performance Criteria

This report shall not be reproduced except in full, without the written approval of KES Co., Ltd.
The results shown in this test report refer only to the sample(s) tested unless otherwise stated.
The authenticity of the test report, contact kes@kes.co.kr

3.3 Electrical Fast Transients/Bursts

Reference Standard

EN 61000-4-4:2012
BS EN 61000-4-4:2012

Test Date

Jul. 15, 2021

Test Location

EMS-EFT: Electro wave Shieldroom #7

Test Equipment

Used	Description	Model Number	Manufacturer	Serial Number	Cal. Due
<input checked="" type="checkbox"/>	EMS Test S/W	iec.control	EM TEST	5.4.8	-
<input checked="" type="checkbox"/>	ULTRA COMPACT SIMULATOR	UCS 500N7	EM TEST	P1608172950	11, 26, 2021
<input checked="" type="checkbox"/>	MOTOR VARIAC	MV2616	EM TEST	P1552169719	11, 26, 2021
<input checked="" type="checkbox"/>	CAPACITIVE COUPLING CLAMP	HFK	EM TEST	P1633183115	11, 26, 2021

Test Conditions

Temperature: (24,9 ± 0,2) °C
Relative Humidity: (46,8 ± 0,3) % R.H.
Atmospheric Pressure: (99,5 ± 0,0) kPa

Test Specifications

Pulse Amplitude & Polarity:
(AC Power Lines) ☐ ± 1.0 kV ☒ ± 2.0 kV
☐ ± 4.0 kV

Pulse Amplitude & Polarity:
(Other supply / Signal Lines) ☐ ± 0.5 kV ☒ ± 1.0 kV
☐ ± 2.0 kV

Burst Period: ☒ 300 ms ☐ 2 s

Repetition Rate: ☐ 5 kHz ☒ 100 kHz

Duration of Test Voltage: ☒ ≥ 1 min

Required Performance Criteria: ☒ Complied

Test Data

■ DC Mode

☒ Input a.c. power ports – Coupling/Decoupling Network used

Mode of Application	Observations	
	(+) Burst (kV)	(-) Burst (kV)
L	Complied	Complied
N	Complied	Complied
PE	-	-
L – N	Complied	Complied
L – PE	-	-
N – PE	-	-
L – N – PE	-	-

☐ Input d.c. power ports – Coupling/Decoupling Network used

Mode of Application	Observations	
	(+) Burst (kV)	(-) Burst (kV)
-	-	-

☒ Signal ports and telecommunication ports – Coupling Clamp used

Mode of Application	Observations	
	(+) Burst (kV)	(-) Burst (kV)
RJ-45 (LAN)	Complied	Complied
Alarm 1	Complied	Complied
Alarm 2	Complied	Complied

■ PoE Mode

☐ Input a.c. power ports – Coupling/Decoupling Network used

Mode of Application	Observations	
	(+) Burst (kV)	(-) Burst (kV)
L	-	-
N	-	-
PE	-	-
L – N	-	-
L – PE	-	-
N – PE	-	-
L – N – PE	-	-

☐ Input d.c. power ports – Coupling/Decoupling Network used

Mode of Application	Observations	
	(+) Burst (kV)	(-) Burst (kV)
-	-	-

☒ Signal ports and telecommunication ports – Coupling Clamp used

Mode of Application	Observations	
	(+) Burst (kV)	(-) Burst (kV)
RJ-45 (PoE)	Complied	Complied
Alarm 1	Complied	Complied
Alarm 2	Complied	Complied

Note: “Blank” = Not performed

Observations:

Complied – No degradation of function

Test Results

☒ PASS Required Performance Criteria

☐ NOT PASS Required Performance Criteria

Remarks

PASS Required Performance Criteria

**KES Co., Ltd.**

3701, 40, Simin-daero 365beon-gil,
Dongan-gu, Anyang-si, Gyeonggi-do, 14057, Korea
Tel: +82-31-425-6200 / Fax: +82-31-424-0450
www.kes.co.kr

Report No.:

KES-EM-21T0627-R1

Page (31) of (73)

3.4 Surge Transients

Reference Standard

EN 61000-4-5:2014

BS EN 61000-4-5:2014

Test Date

Jul. 15, 2021

Test Location

EMS-EFT: Electro wave Shieldroom #7

Test Equipment

Used	Description	Model Number	Manufacturer	Serial Number	Cal. Due
<input checked="" type="checkbox"/>	EMS Test S/W	iec.control	EM TEST	5.4.8	-
<input checked="" type="checkbox"/>	ULTRA COMPACT SIMULATOR	UCS 500N7	EM TEST	P1608172950	11, 26, 2021
<input checked="" type="checkbox"/>	MOTOR VARIAC	MV2616	EM TEST	P1552169719	11, 26, 2021
<input checked="" type="checkbox"/>	CDN	CNV 508N1	EM TEST	P1610176296	11, 27, 2021

Test Conditions

Temperature: (24,9 ± 0,3) °C

Relative Humidity: (46,8 ± 0,5) % R.H.

Atmospheric Pressure: (99,5 ± 0,0) kPa

This report shall not be reproduced except in full, without the written approval of KES Co., Ltd.

The results shown in this test report refer only to the sample(s) tested unless otherwise stated.

The authenticity of the test report, contact kes@kes.co.kr

**KES Co., Ltd.**

3701, 40, Simin-daero 365beon-gil,
Dongan-gu, Anyang-si, Gyeonggi-do, 14057, Korea
Tel: +82-31-425-6200 / Fax: +82-31-424-0450
www.kes.co.kr

Report No.:

KES-EM-21T0627-R1

Page (32) of (73)

Test Specifications**AC Power Lines**

Source Impedance: 12 ohm for common Mode and 2 ohm for differential Mode

Surge Amplitude :

Common Mode☐ (0,5 / 1,0 / 2,0) kVDifferential Mode☒ (0,5 / 1,0) kV

Number of Surges:

☒ 5 surges per angle

Angle:

☒ 0°, 90°, 180°, 270° (input a.c. power port)

Polarity:

☒ Positive & Negative

Repetition Rate:

☐ 1 surge per min ☒ 1 surge per 30 sec.Required Performance Criteria: ☒ Complied**Other supply / Signal Lines**

Source Impedance:

42 ohm for common Mode

Surge Amplitude:

Common Mode☒ (0,5 / 1,0) kV

Number of Surges:

☒ 5 Surges

Polarity:

☒ Positive & Negative

Repetition Rate:

☐ 1 surge per min ☒ 1 surge per 30 sec.Required Performance Criteria: ☒ Complied

This report shall not be reproduced except in full, without the written approval of KES Co., Ltd.
The results shown in this test report refer only to the sample(s) tested unless otherwise stated.
The authenticity of the test report, contact kes@kes.co.kr

**KES Co., Ltd.**

3701, 40, Simin-daero 365beon-gil,
Dongan-gu, Anyang-si, Gyeonggi-do, 14057, Korea
Tel: +82-31-425-6200 / Fax: +82-31-424-0450
www.kes.co.kr

Report No.:
KES-EM-21T0627-R1
Page (33) of (73)

Test Data

■ DC Mode

☒ Line to Line – Differential Mode

Mode of Application	Observations	
	(+) Surge (kV)	(-) Surge (kV)
L – N	Complied	Complied

☐ Line to Earth – Common Mode

Mode of Application	Observations	
	(+) Surge (kV)	(-) Surge (kV)
L – PE	-	-
N – PE	-	-

Signal Lines

☒ Line to Earth – Common Mode

Mode of Application	Coupling Method	Observations	
		(+) Surge (kV)	(-) Surge (kV)
RJ-45 (LAN)	CDN	Complied	Complied
	LINE	Complied	Complied

This report shall not be reproduced except in full, without the written approval of KES Co., Ltd.
The results shown in this test report refer only to the sample(s) tested unless otherwise stated.
The authenticity of the test report, contact kes@kes.co.kr

**KES Co., Ltd.**

3701, 40, Simin-daero 365beon-gil,
Dongan-gu, Anyang-si, Gyeonggi-do, 14057, Korea
Tel: +82-31-425-6200 / Fax: +82-31-424-0450
www.kes.co.kr

Report No.:
KES-EM-21T0627-R1
Page (34) of (73)

☒ PoE Mode

☐ Line to Line – Differential Mode

Mode of Application	Observations	
	(+) Surge (kV)	(-) Surge (kV)
L – N	-	-

☐ Line to Earth – Common Mode

Mode of Application	Observations	
	(+) Surge (kV)	(-) Surge (kV)
L – PE	-	-
N – PE	-	-

Signal Lines

☒ Line to Earth – Common Mode

Mode of Application	Coupling Method	Observations	
		(+) Surge (kV)	(-) Surge (kV)
RJ-45 (PoE)	CDN	Complied	Complied
	LINE	Complied	Complied

Note: "Blank" = Not performed

Observations:

Complied – No degradation of function

Test Results

☒ PASS Required Performance Criteria

☐ NOT PASS Required Performance Criteria

☐ NOT APPLICABLE

Remarks

PASS Required Performance Criteria

3.5 Conducted Disturbance

Reference Standard

EN 61000-4-6:2014

BS EN 61000-4-6:2014

Test Date

Jul. 13, 2021

Test Location

EMS-CS: Electro wave Shieldroom #6

Test Equipment

Used	Description	Model Number	Manufacturer	Serial Number	Cal. Due
<input checked="" type="checkbox"/>	EMS Test S/W	icd.control	EM TEST	5.3.12	-
<input checked="" type="checkbox"/>	CONTINUOUS WAVE SIMULATOR	CWS 500N1.4	EM TEST	P1602169880	11, 25, 2021
<input checked="" type="checkbox"/>	ATTENUATOR	ATT 6/80	EM TEST	P1614178148	11, 25, 2021
<input checked="" type="checkbox"/>	CDN	CDN M016	TESEQ	43694	11, 25, 2021
<input checked="" type="checkbox"/>	CDN	CDN M016	TESEQ	43697	11, 25, 2021
<input checked="" type="checkbox"/>	CDN	CDN T8RJ45	EM TEST	0909-09	08, 05, 2021
<input checked="" type="checkbox"/>	EM CLAMP	KEMZ 801A	TESEQ	44099	11, 26, 2021

Test Conditions

Temperature: (24,9 ± 0,3) °C

Relative Humidity: (46,8 ± 0,5) % R.H.

Atmospheric Pressure: (99,9 ± 0,0) kPa



KES Co., Ltd.

3701, 40, Simin-daero 365beon-gil,
Dongan-gu, Anyang-si, Gyeonggi-do, 14057, Korea
Tel: +82-31-425-6200 / Fax: +82-31-424-0450
www.kes.co.kr

Report No.:

KES-EM-21T0627-R1

Page (36) of (73)

Test Specifications

Frequency range:

☒ 150 kHz to 100 MHz

☐ 150 kHz to 80 MHz

Voltage Level:

☐ 1 Vrms

☐ 3 Vrms

☒ 10 Vrms

Modulation:

☒ AM, 80 %, 1 kHz sine wave

☒ PM, 1 Hz (0,5 s ON : 0,5 s OFF)

Frequency step:

☒ 1 % step

Dwell Time:

☐ 1 s

☒ 3 s

Required Performance Criteria: ☒ Complied

This report shall not be reproduced except in full, without the written approval of KES Co., Ltd.
The results shown in this test report refer only to the sample(s) tested unless otherwise stated.
The authenticity of the test report, contact kes@kes.co.kr

**KES Co., Ltd.**

3701, 40, Simin-daero 365beon-gil,
Dongan-gu, Anyang-si, Gyeonggi-do, 14057, Korea
Tel: +82-31-425-6200 / Fax: +82-31-424-0450
www.kes.co.kr

Report No.:
KES-EM-21T0627-R1
Page (37) of (73)

Test Data**■ DC Mode**☒ Input a.c. power ports

Coupling Location (Line Stressed)	Coupling Method	Observations
L – N	CDN	Complied

☐ Input d.c. power ports

Coupling Location (Line Stressed)	Coupling Method	Observations
-	-	-

☒ Signal ports and telecommunication ports

Coupling Location (Line Stressed)	Coupling Method	Observations
RJ-45 (LAN)	CDN	Complied
Alarm 1	Clamp	Complied
Alarm 2	Clamp	Complied

This report shall not be reproduced except in full, without the written approval of KES Co., Ltd.
The results shown in this test report refer only to the sample(s) tested unless otherwise stated.
The authenticity of the test report, contact kes@kes.co.kr

**KES Co., Ltd.**

3701, 40, Simin-daero 365beon-gil,
Dongan-gu, Anyang-si, Gyeonggi-do, 14057, Korea
Tel: +82-31-425-6200 / Fax: +82-31-424-0450
www.kes.co.kr

Report No.:

KES-EM-21T0627-R1

Page (38) of (73)

■ PoE Mode☐ Input a.c. power ports

Coupling Location (Line Stressed)	Coupling Method	Observations
-	-	-

☐ Input d.c. power ports

Coupling Location (Line Stressed)	Coupling Method	Observations
-	-	-

☒ Signal ports and telecommunication ports

Coupling Location (Line Stressed)	Coupling Method	Observations
RJ-45 (PoE)	CDN	Complied
Alarm 1	Clamp	Complied
Alarm 2	Clamp	Complied

Notes: CDN = Coupling Decoupling Network
"blank" = Not performed

Observations:

Complied – No degradation of function

Test Results

- ☒ PASS Required Performance Criteria
☐ NOT PASS Required Performance Criteria

RemarksPASS Required Performance Criteria

This report shall not be reproduced except in full, without the written approval of KES Co., Ltd.
The results shown in this test report refer only to the sample(s) tested unless otherwise stated.
The authenticity of the test report, contact kes@kes.co.kr

**KES Co., Ltd.**

3701, 40, Simin-daero 365beon-gil,
Dongan-gu, Anyang-si, Gyeonggi-do, 14057, Korea
Tel: +82-31-425-6200 / Fax: +82-31-424-0450
www.kes.co.kr

Report No.:

KES-EM-21T0627-R1

Page (39) of (73)

3.6 Voltage Dips and Short Interruptions

Reference Standard

EN 61000-4-11:2004

BS EN 61000-4-11:2004

Test Date

Jul. 15, 2021

Test Location

EMS-Voltage dip: Electro wave Shieldroom #7

Test Equipment

Used	Description	Model Number	Manufacturer	Serial Number	Cal. Due
<input checked="" type="checkbox"/>	EMS Test S/W	iec.control	EM TEST	5.4.8	-
<input checked="" type="checkbox"/>	ULTRA COMPACT SIMULATOR	UCS 500N7	EM TEST	P1608172950	11, 26, 2021
<input checked="" type="checkbox"/>	MOTOR VARIAC	MV2616	EM TEST	P1552169719	11, 26, 2021

Test Conditions

Temperature: (24,9 ± 0,2) °C
Relative Humidity: (46,8 ± 0,2) % R.H.
Atmospheric Pressure: (99,5 ± 0,0) kPa

This report shall not be reproduced except in full, without the written approval of KES Co., Ltd.
The results shown in this test report refer only to the sample(s) tested unless otherwise stated.
The authenticity of the test report, contact kes@kes.co.kr

**KES Co., Ltd.**

3701, 40, Simin-daero 365beon-gil,
Dongan-gu, Anyang-si, Gyeonggi-do, 14057, Korea
Tel: +82-31-425-6200 / Fax: +82-31-424-0450
www.kes.co.kr

Report No.:

KES-EM-21T0627-R1

Page (40) of (73)

Test Specifications & Observations/Remarks

■ DC Mode

- Voltage Dips and Short Interruptions

<u>Test Level</u>	<u>Duration [in period/ms (50 Hz)]</u>	<u>Results</u>
<input checked="" type="checkbox"/> 20 % dip	<input checked="" type="checkbox"/> 250 / 5 000	<u>Complied</u>
<input checked="" type="checkbox"/> 30 % dip	<input checked="" type="checkbox"/> 25 / 500	<u>Complied</u>
<input checked="" type="checkbox"/> 60 % dip	<input checked="" type="checkbox"/> 10 / 200	<u>Complied</u>
<input checked="" type="checkbox"/> 100 % dip	<input checked="" type="checkbox"/> 250 / 5 000	<u>Degradation</u>

- Voltage variations

<input checked="" type="checkbox"/> Unom + 10 %	<input checked="" type="checkbox"/> 253.0 V (ac)	<u>Complied</u>
<input checked="" type="checkbox"/> Unom - 15 %	<input checked="" type="checkbox"/> 195.5 V (ac)	<u>Complied</u>

Observations:

Complied – No degradation of function

Degradation - See "Remarks "

Test Results

- ☒ PASS Required Performance Criteria
☐ NOT PASS Required Performance Criteria
☐ NOT APPLICABLE

Remarks

During the test(100%, 250cycle), EUT was turned off but after the test, it was recovered without operator's intervention.

APPENDIX A – TEST DATA

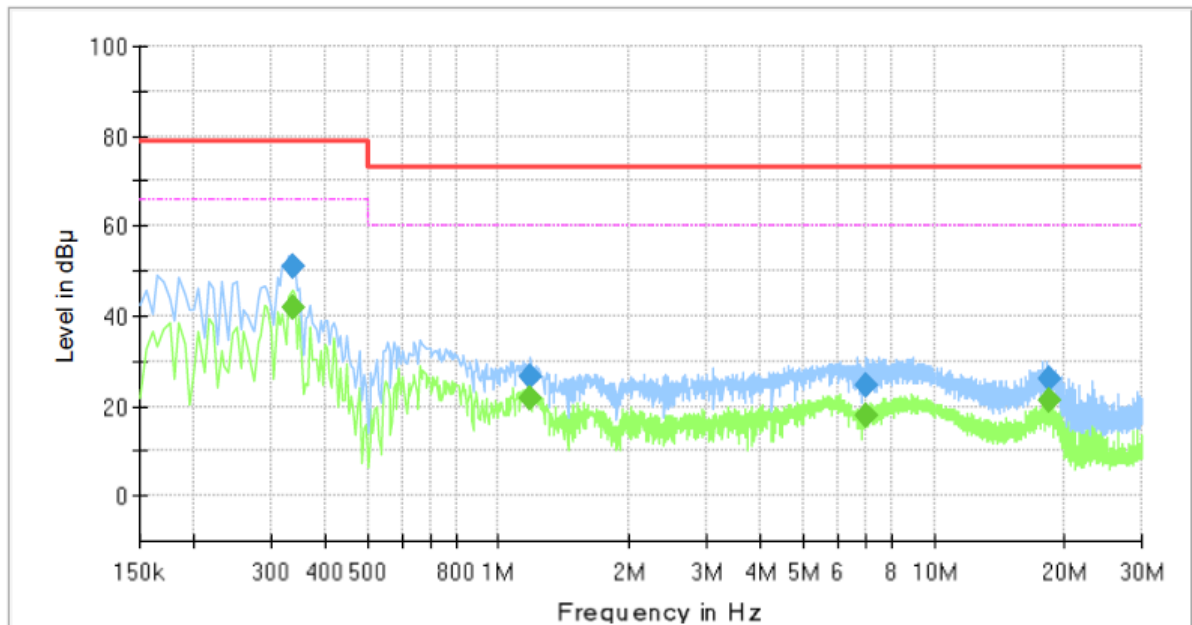
Conducted Emissions at Mains Power Ports

■ DC Mode

[HOT]

Common Information

Test Description:	Conducted Emission
Model No.:	QNO-7032R
Phase:	L1
Mode:	DC
Operator Name:	KES



Final Result

Frequency (MHz)	QuasiPeak (dBμV)	CAverage (dBμV)	Limit (dBμV)	Margin (dB)	Meas. Time (ms)	Bandwidth (kHz)	Line	Corr. (dB)
0.335000	---	41.87	66.00	24.13	1000.0	9.000	L1	19.5
0.335000	51.01	---	79.00	27.99	1000.0	9.000	L1	19.5
1.185000	---	21.84	60.00	38.16	1000.0	9.000	L1	20.1
1.185000	26.30	---	73.00	46.70	1000.0	9.000	L1	20.1
7.015000	---	17.86	60.00	42.14	1000.0	9.000	L1	19.5
7.015000	24.59	---	73.00	48.41	1000.0	9.000	L1	19.5
18.305000	---	21.26	60.00	38.74	1000.0	9.000	L1	20.0
18.305000	26.08	---	73.00	46.92	1000.0	9.000	L1	20.0

This report shall not be reproduced except in full, without the written approval of KES Co., Ltd.

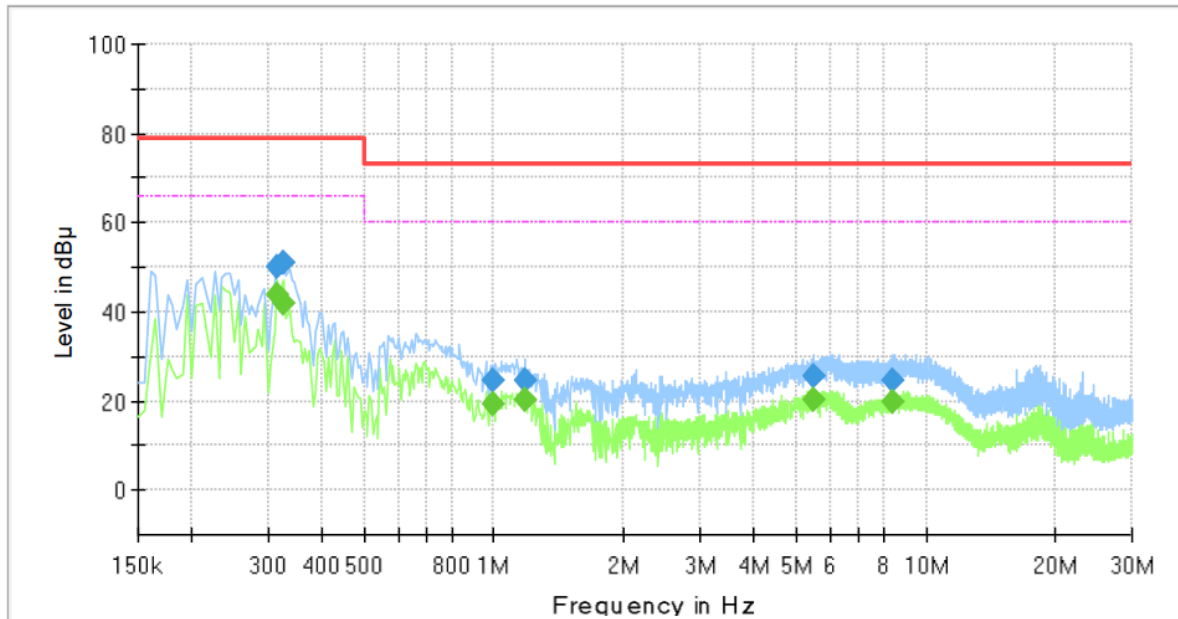
The results shown in this test report refer only to the sample(s) tested unless otherwise stated.

The authenticity of the test report, contact kes@kes.co.kr

[NEUTRAL]

Common Information

Test Description:	Conducted Emission
Model No.:	QNO-7032R
Phase:	N
Mode:	DC
Operator Name:	KES



Final Result

Frequency (MHz)	QuasiPeak (dBμV)	CAverage (dBμV)	Limit (dBμV)	Margin (dB)	Meas. Time (ms)	Bandwidth (kHz)	Line	Corr. (dB)
0.315000	---	43.95	66.00	22.05	1000.0	9.000	N	19.5
0.315000	49.81	---	79.00	29.19	1000.0	9.000	N	19.5
0.325000	---	41.91	66.00	24.09	1000.0	9.000	N	19.5
0.325000	51.15	---	79.00	27.85	1000.0	9.000	N	19.5
0.990000	---	19.22	60.00	40.78	1000.0	9.000	N	20.0
0.990000	24.73	---	73.00	48.27	1000.0	9.000	N	20.0
1.180000	---	20.15	60.00	39.85	1000.0	9.000	N	20.1
1.180000	24.73	---	73.00	48.27	1000.0	9.000	N	20.1
5.490000	---	20.31	60.00	39.69	1000.0	9.000	N	19.6
5.490000	25.42	---	73.00	47.58	1000.0	9.000	N	19.6
8.405000	---	19.67	60.00	40.33	1000.0	9.000	N	19.6
8.405000	24.77	---	73.00	48.23	1000.0	9.000	N	19.6

◆ Calculation

QuasiPeak[dBuV] / CAverage [dBuV] = Reading Value[dBuV] + Corr. [dB]

QuasiPeak / CAverage : The Final Value

Reading Value : Not shown in the table.

Corr. : Correction values (LISN FACTOR + (Cable Loss + Pulse Limiter FACTOR))

This report shall not be reproduced except in full, without the written approval of KES Co., Ltd.

The results shown in this test report refer only to the sample(s) tested unless otherwise stated.

The authenticity of the test report, contact kes@kes.co.kr

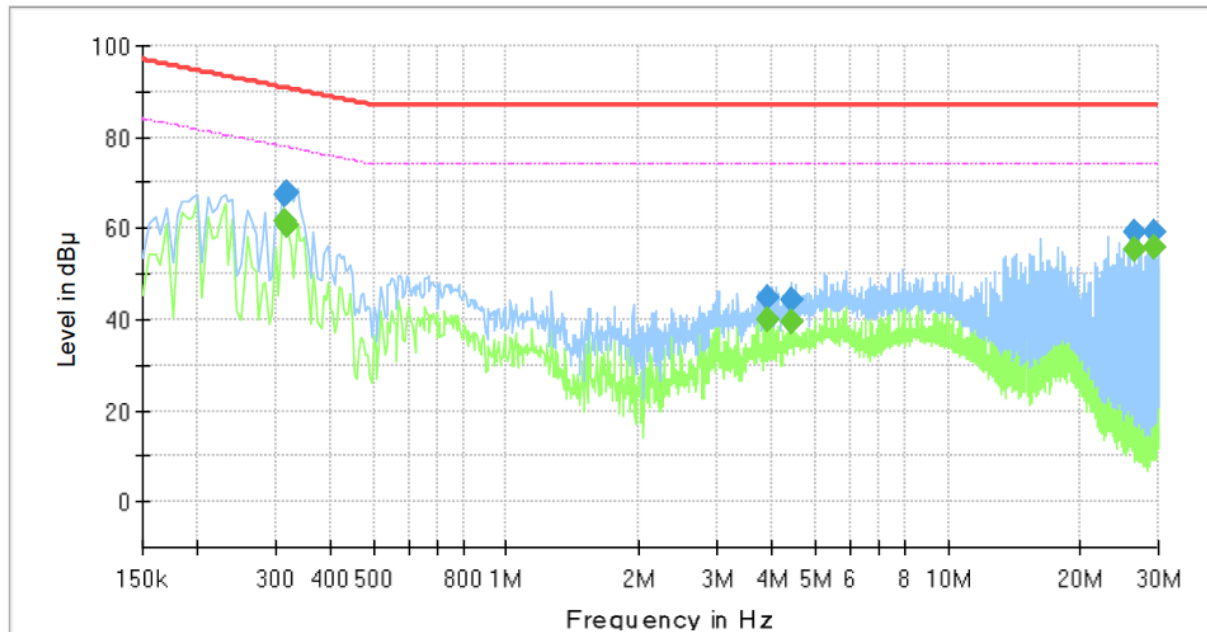
Conducted Emissions at Telecommunication Ports

■ DC Mode

[100 Mbps]

Common Information

Test Description:	Telecommunication Emission
Model No.:	QNO-7032R
Mode :	DC
Speed :	100 Mbps
Operator Name:	KES

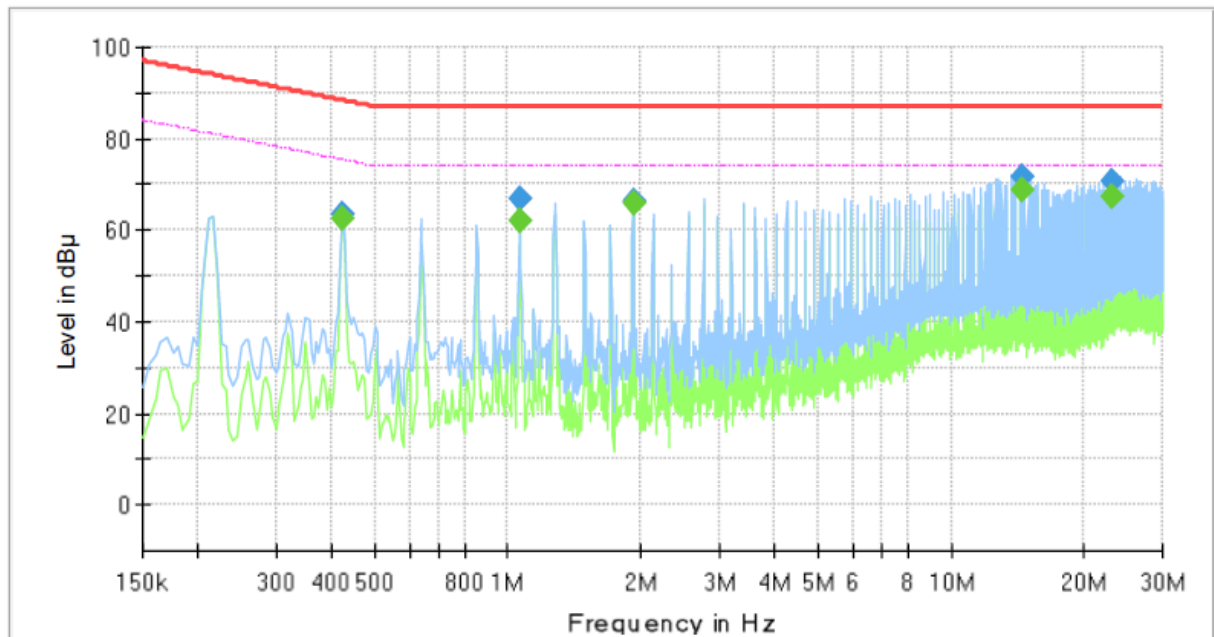


Final Result

Frequency (MHz)	QuasiPeak (dBμV)	CAverage (dBμV)	Limit (dBμV)	Margin (dB)	Meas. Time (ms)	Bandwidth (kHz)	Line	Corr. (dB)
0.315000	---	61.57	77.84	16.27	1000.0	9.000	Single Line	19.7
0.315000	67.21	---	90.84	23.63	1000.0	9.000	Single Line	19.7
0.320000	---	60.63	77.71	17.08	1000.0	9.000	Single Line	19.7
0.320000	67.83	---	90.71	22.88	1000.0	9.000	Single Line	19.7
3.895000	---	40.13	74.00	33.87	1000.0	9.000	Single Line	19.8
3.895000	44.54	---	87.00	42.46	1000.0	9.000	Single Line	19.8
4.415000	---	39.56	74.00	34.44	1000.0	9.000	Single Line	19.6
4.415000	44.19	---	87.00	42.81	1000.0	9.000	Single Line	19.6
26.610000	---	55.46	74.00	18.54	1000.0	9.000	Single Line	20.3
26.610000	59.00	---	87.00	28.00	1000.0	9.000	Single Line	20.3
29.235000	---	55.87	74.00	18.13	1000.0	9.000	Single Line	20.5
29.235000	59.19	---	87.00	27.81	1000.0	9.000	Single Line	20.5

PoE Mode
[100 Mbps]
Common Information

Test Description:	Telecommunication Emission
Model No.:	QNO-7032R
Mode :	PoE
Speed :	100 Mbps
Operator Name:	KES


Final Result

Frequency (MHz)	QuasiPeak (dBμV)	CAverage (dBμV)	Limit (dBμV)	Margin (dB)	Meas. Time (ms)	Bandwidth (kHz)	Line	Corr. (dB)
0.425000	---	62.59	75.35	12.76	1000.0	9.000	Single Line	19.8
0.425000	63.36	---	88.35	24.99	1000.0	9.000	Single Line	19.8
1.065000	---	62.01	74.00	11.99	1000.0	9.000	Single Line	20.0
1.065000	66.64	---	87.00	20.36	1000.0	9.000	Single Line	20.0
1.915000	---	66.12	74.00	7.88	1000.0	9.000	Single Line	20.2
1.915000	66.42	---	87.00	20.58	1000.0	9.000	Single Line	20.2
14.470000	---	68.66	74.00	5.34	1000.0	9.000	Single Line	19.7
14.470000	71.84	---	87.00	15.16	1000.0	9.000	Single Line	19.7
22.980000	---	67.34	74.00	6.66	1000.0	9.000	Single Line	20.1
22.980000	70.59	---	87.00	16.41	1000.0	9.000	Single Line	20.1

◆ Calculation

$$\text{QuasiPeak [dBuV]} / \text{CAverage [dBuV]} = \text{Reading Value [dBuV]} + \text{Corr. [dB]}$$

QuasiPeak / CAverage : The Final Value

Reading Value : Not shown in the table.

Corr. : Correction values (ISN FACTOR + (Cable Loss + Pulse Limiter FACTOR))

This report shall not be reproduced except in full, without the written approval of KES Co., Ltd.

The results shown in this test report refer only to the sample(s) tested unless otherwise stated.

The authenticity of the test report, contact kes@kes.co.kr



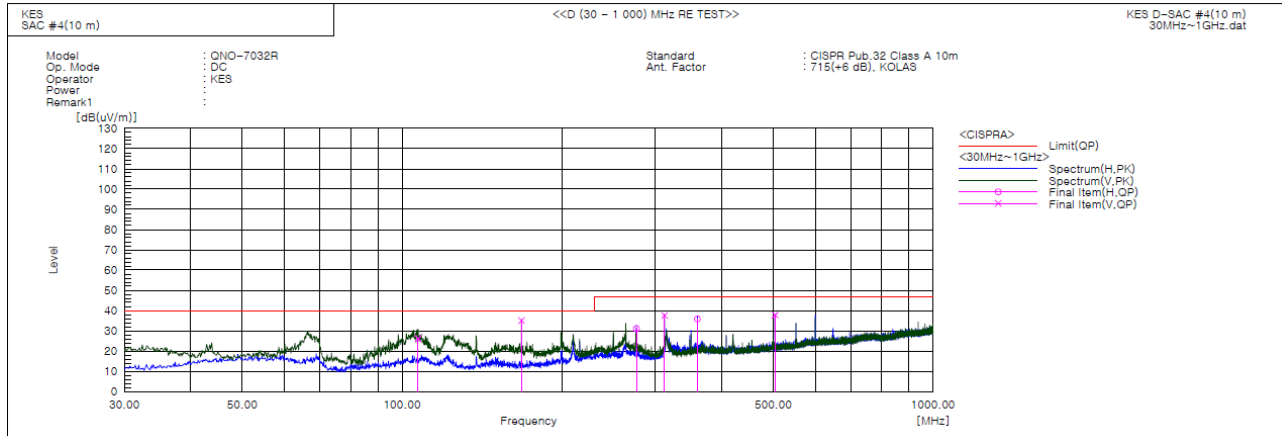
KES Co., Ltd.

3701, 40, Simin-daero 365beon-gil,
Dongan-gu, Anyang-si, Gyeonggi-do, 14057, Korea
Tel: +82-31-425-6200 / Fax: +82-31-424-0450
www.kes.co.kr

Report No.:
KES-EM-21T0627-R1
Page (45) of (73)

Radiated Electric Field Emissions(Below 1 GHz)

■ DC Mode



Final Result

No.	Frequency [MHz]	(P)	Reading QP [dB(uV)]	c.f [dB(1/m)]	Result QP [dB(uV/m)]	Limit QP [dB(uV/m)]	Margin QP [dB]	Height [cm]	Angle [deg]	Remark
1	107.236	V	48.6	-22.4	26.2	40.0	13.8	178.0	104.0	
2	167.861	V	59.3	-24.2	35.1	40.0	4.9	100.0	36.0	
3	276.259	H	49.7	-18.6	31.1	47.0	15.9	133.0	98.0	
4	311.906	V	54.8	-17.2	37.6	47.0	9.4	267.0	104.0	
5	359.921	H	51.0	-15.1	35.9	47.0	11.1	400.0	263.0	
6	503.845	V	49.3	-11.5	37.8	47.0	9.2	100.0	13.0	

This report shall not be reproduced except in full, without the written approval of KES Co., Ltd.
The results shown in this test report refer only to the sample(s) tested unless otherwise stated.
The authenticity of the test report, contact kes@kes.co.kr



KES Co., Ltd.

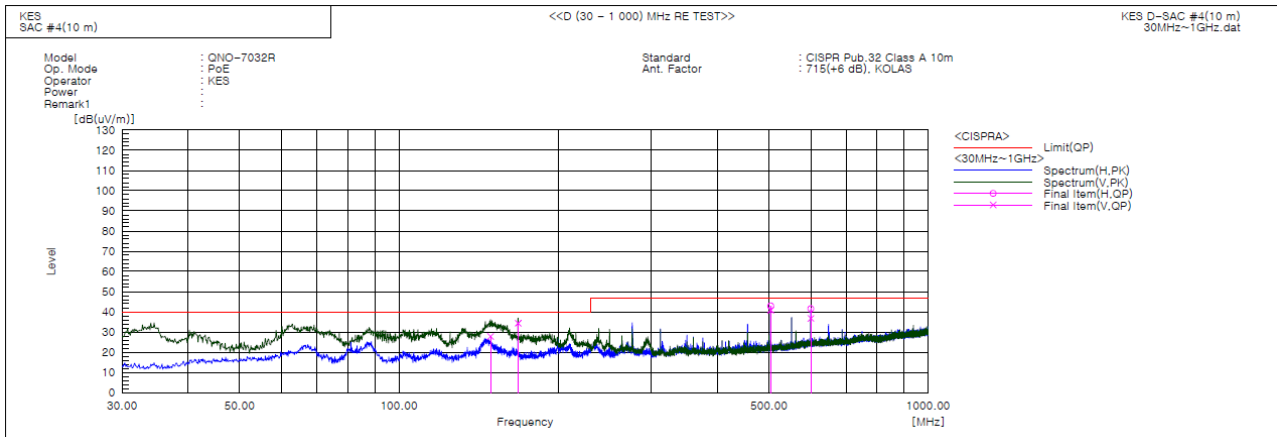
3701, 40, Simin-daero 365beon-gil,
Dongan-gu, Anyang-si, Gyeonggi-do, 14057, Korea
Tel: +82-31-425-6200 / Fax: +82-31-424-0450
www.kes.co.kr

Report No.:

KES-EM-21T0627-R1

Page (46) of (73)

■ PoE Mode



Final Result

No.	Frequency [MHz]	(P)	Reading QP [dB(uV)]	c.f [dB(1/m)]	Result QP [dB(uV/m)]	Limit QP [dB(uV/m)]	Margin QP [dB]	Height [cm]	Angle [deg]	Remark
1	148.946	V	53.0	-25.1	27.9	40.0	12.1	112.0	165.0	
2	167.983	V	58.6	-24.2	34.4	40.0	5.6	100.0	347.0	
3	503.845	H	54.4	-11.5	42.9	47.0	4.1	356.0	134.0	
4	503.845	V	52.3	-11.5	40.8	47.0	6.2	111.0	181.0	
5	599.875	V	45.3	-8.5	36.8	47.0	10.2	100.0	173.0	
6	599.875	H	50.1	-8.5	41.6	47.0	5.4	251.0	354.0	

◆ Calculation – SEMI ANECHOIC CHAMBER #4(10 m)

Result(QP) [dB(μV/m)] = (Reading(QP)[dB(μV)] + c.f[dB(1/m)])

Margin(QP)[dB] = Limit[dB(μV/m)] - Result(QP) [dB(μV/m)]

Reading(QP) : Reading value, Result(QP) : Reading value + Factor value

Limit(QP) : Limit value, c.f : (ANT Factor + Cable Loss - Preamp Factor), Margin: Margin value

This report shall not be reproduced except in full, without the written approval of KES Co., Ltd.

The results shown in this test report refer only to the sample(s) tested unless otherwise stated.

The authenticity of the test report, contact kes@kes.co.kr



KES Co., Ltd.

3701, 40, Simin-daero 365beon-gil,
Dongan-gu, Anyang-si, Gyeonggi-do, 14057, Korea
Tel: +82-31-425-6200 / Fax: +82-31-424-0450
www.kes.co.kr

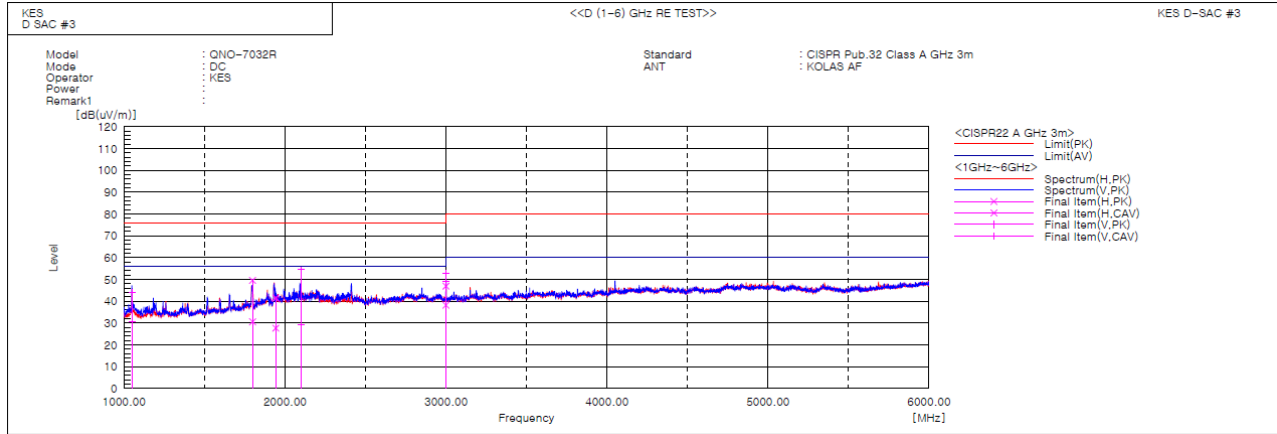
Report No.:

KES-EM-21T0627-R1

Page (47) of (73)

Radiated Electric Field Emissions(Above 1 GHz)

■ DC Mode



Final Result

No.	Frequency [MHz]	(P)	Reading PK [dB(uV)]	Reading CAV [dB(uV)]	c.f [dB(1/m)]	Result PK [dB(uV/m)]	Result CAV [dB(uV/m)]	Limit PK [dB(uV/m)]	Limit AV [dB(uV/m)]	Margin PK [dB]	Margin CAV [dB]	Height [cm]	Angle [deg]	Remark
1	1051.440	V	53.1	39.7	-9.1	44.0	30.6	76.0	56.0	32.0	25.4	100.0	145.1	
2	1798.369	H	52.5	33.5	-2.9	49.6	30.6	76.0	56.0	26.4	25.4	100.0	47.5	
3	1942.598	H	42.7	28.9	-1.2	41.5	27.7	76.0	56.0	34.5	28.3	100.0	306.1	
4	2100.738	V	55.3	30.1	-0.6	54.7	29.5	76.0	56.0	21.3	26.5	100.0	352.6	
5	2999.580	H	45.2	36.4	1.8	47.0	38.2	76.0	56.0	29.0	17.8	100.0	322.6	
6	2999.870	V	50.9	47.4	1.8	52.7	49.2	76.0	56.0	23.3	6.8	100.0	155.6	

This report shall not be reproduced except in full, without the written approval of KES Co., Ltd.

The results shown in this test report refer only to the sample(s) tested unless otherwise stated.

The authenticity of the test report, contact kes@kes.co.kr



KES Co., Ltd.

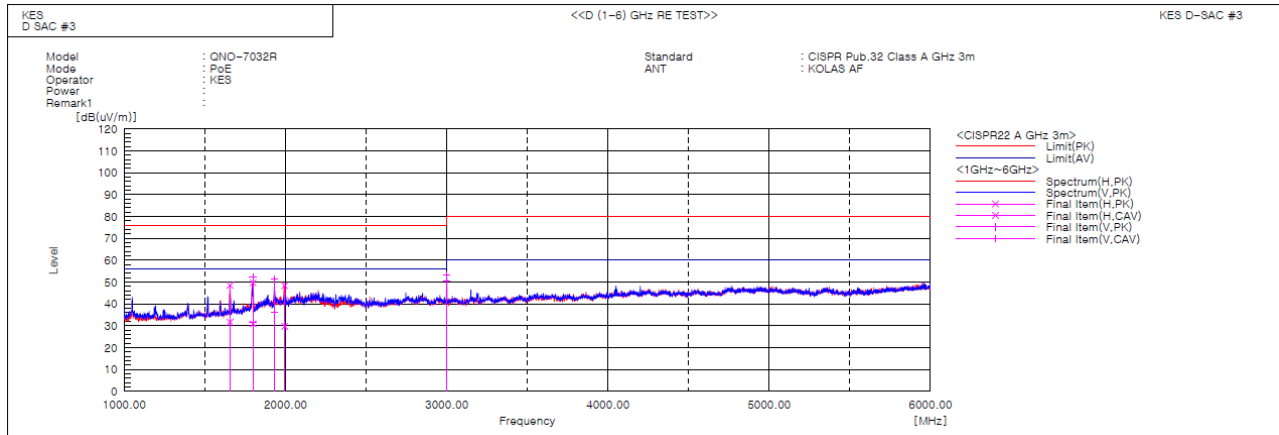
3701, 40, Simin-daero 365beon-gil,
Dongan-gu, Anyang-si, Gyeonggi-do, 14057, Korea
Tel: +82-31-425-6200 / Fax: +82-31-424-0450
www.kes.co.kr

Report No.:

KES-EM-21T0627-R1

Page (48) of (73)

PoE Mode



Final Result

No.	Frequency [MHz]	(P)	Reading PK [dB(uV)]	Reading CAV [dB(uV)]	c.f [dB(1/m)]	Result PK [dB(uV/m)]	Result CAV [dB(uV/m)]	Limit PK [dB(uV/m)]	Limit AV [dB(uV/m)]	Margin PK [dB]	Margin CAV [dB]	Height [cm]	Angle [deg]	Remark
1	1656.110	H	53.1	36.3	-4.6	48.5	31.7	76.0	56.0	27.5	24.3	100.0	66.5	
2	1798.330	V	55.3	34.4	-2.9	52.4	31.5	76.0	56.0	23.6	24.5	100.0	199.0	
3	1799.079	H	52.6	33.9	-2.9	49.7	31.0	76.0	56.0	26.3	25.0	100.0	60.5	
4	1931.780	V	52.9	37.6	-1.3	51.6	36.3	76.0	56.0	24.4	19.7	100.0	163.1	
5	1995.389	H	49.3	30.7	-0.9	48.4	29.8	76.0	56.0	27.6	26.2	100.0	78.2	
6	3000.110	V	51.5	48.7	1.8	53.3	50.5	80.0	60.0	26.7	9.5	100.0	149.4	

Calculation

Result(PK/CAV) [dB(μ V/m)] = (Reading(PK/CAV)[dB(μ V)] + c.f[dB(1/m)])

Margin(PK/CAV)[dB] = Limit[dB(μ V/m)] - Result(PK/CAV) [dB(μ V/m)]

Reading(PK/CAV) : Reading value, Result(PK/CAV) : Reading value + Factor value

Limit(QP) : Limit value, c.f : (ANT Factor + Cable Loss - Preamp Factor), Margin: Margin value

This report shall not be reproduced except in full, without the written approval of KES Co., Ltd.

The results shown in this test report refer only to the sample(s) tested unless otherwise stated.

The authenticity of the test report, contact kes@kes.co.kr



Harmonic Current Emissions and Voltage Fluctuations and Flicker

■ DC Mode

Average harmonic current results

Hn	I _{eff} [A]	% of Limit	Limit [A]	Result
1	0.023			
2	0.002	0.148	1.080	n/a
3	0.015	0.646	2.300	PASS
4	0.002	0.368	0.430	n/a
5	0.016	1.403	1.140	PASS
6	0.002	0.500	0.300	n/a
7	0.016	2.067	0.770	PASS
8	0.001	0.627	0.230	n/a
9	0.015	3.683	0.400	PASS
10	0.002	0.829	0.184	n/a
11	0.015	4.419	0.330	PASS
12	0.001	0.935	0.153	n/a
13	0.014	6.791	0.210	PASS
14	0.001	1.127	0.131	n/a
15	0.014	9.018	0.150	PASS
16	0.001	1.202	0.115	n/a
17	0.013	9.992	0.132	PASS
18	0.001	1.349	0.102	n/a
19	0.013	10.646	0.118	PASS
20	0.001	1.480	0.092	n/a
21	0.012	7.399	0.161	PASS
22	0.001	1.541	0.084	n/a
23	0.011	7.764	0.147	PASS
24	0.001	1.766	0.077	n/a
25	0.011	7.892	0.135	PASS
26	0.001	1.759	0.071	n/a
27	0.010	8.045	0.125	PASS
28	0.001	1.865	0.066	n/a
29	0.009	7.949	0.116	PASS
30	0.001	1.941	0.061	n/a
31	0.009	7.890	0.109	PASS
32	0.001	1.948	0.058	n/a
33	0.008	7.799	0.102	PASS
34	0.001	2.150	0.054	n/a
35	0.007	7.311	0.096	PASS
36	0.001	2.092	0.051	n/a
37	0.007	7.253	0.091	PASS
38	0.001	2.158	0.048	n/a
39	0.006	6.720	0.087	PASS
40	0.001	2.186	0.046	n/a

Note: Harmonic currents less than 0.6 % of the input current measured under the test conditions, or less than 5 mA, whichever is greater, are disregarded.

* Application of limits for average is 100% except for odd harmonics from 21 to 39, where 150% applies.



Test Data - Harmonics (continued)

Maximum harmonic current results				
Hn	I _{eff} [A]	% of Limit	Limit [A]	Result
1	0.023			
2	0.002	0.150	1.620	n/a
3	0.015	0.448	3.450	PASS
4	0.002	0.283	0.645	n/a
5	0.016	0.946	1.710	PASS
6	0.002	0.406	0.450	n/a
7	0.016	1.390	1.155	PASS
8	0.002	0.487	0.345	n/a
9	0.015	2.504	0.600	PASS
10	0.002	0.635	0.276	n/a
11	0.015	2.973	0.495	PASS
12	0.002	0.721	0.230	n/a
13	0.014	4.566	0.315	PASS
14	0.002	0.867	0.197	n/a
15	0.014	6.067	0.225	PASS
16	0.002	0.912	0.173	n/a
17	0.013	6.739	0.199	PASS
18	0.002	1.009	0.153	n/a
19	0.013	7.173	0.178	PASS
20	0.002	1.123	0.138	n/a
21	0.012	7.468	0.161	PASS
22	0.001	1.194	0.125	n/a
23	0.012	7.848	0.147	PASS
24	0.002	1.338	0.115	n/a
25	0.011	7.981	0.135	PASS
26	0.001	1.354	0.106	n/a
27	0.010	8.139	0.125	PASS
28	0.001	1.437	0.099	n/a
29	0.009	8.043	0.116	PASS
30	0.001	1.501	0.092	n/a
31	0.009	7.998	0.109	PASS
32	0.001	1.461	0.086	n/a
33	0.008	7.890	0.102	PASS
34	0.001	1.668	0.081	n/a
35	0.007	7.400	0.096	PASS
36	0.001	1.555	0.077	n/a
37	0.007	7.369	0.091	PASS
38	0.001	1.646	0.073	n/a
39	0.006	6.839	0.087	PASS
40	0.001	1.660	0.069	n/a

Note: Harmonic currents less than 0.6 % of the input current measured under the test conditions, or less than 5 mA, whichever is greater, are disregarded.

* Application of limits for average is 100% except for odd harmonics from 21 to 39, where 150% applies.

**KES Co., Ltd.**

3701, 40, Simin-daero 365beon-gil,
Dongan-gu, Anyang-si, Gyeonggi-do, 14057, Korea
Tel: +82-31-425-6200 / Fax: +82-31-424-0450
www.kes.co.kr

Report No.:
KES-EM-21T0627-R1
Page (51) of (73)

Test Data - Voltage Fluctuations

■ DC Mode

Maximum Flicker results

Flicker Measurements					
	Plt	Max Pst	Max Dc	Max Dmax	Max Tmax
Line 1:	0.028	0.028	0	< 0.2	0
Limits:	0.65	1	3.3	4	0.5
Results:	PASS	PASS	PASS	PASS	PASS

This report shall not be reproduced except in full, without the written approval of KES Co., Ltd.
The results shown in this test report refer only to the sample(s) tested unless otherwise stated.
The authenticity of the test report, contact kes@kes.co.kr

Test Setup Photos and Configuration

Conducted Emissions at Mains Power Ports

■ DC Mode



This report shall not be reproduced except in full, without the written approval of KES Co., Ltd.
The results shown in this test report refer only to the sample(s) tested unless otherwise stated.
The authenticity of the test report, contact kes@kes.co.kr

Conducted Emissions at Telecommunication Ports

■ DC Mode



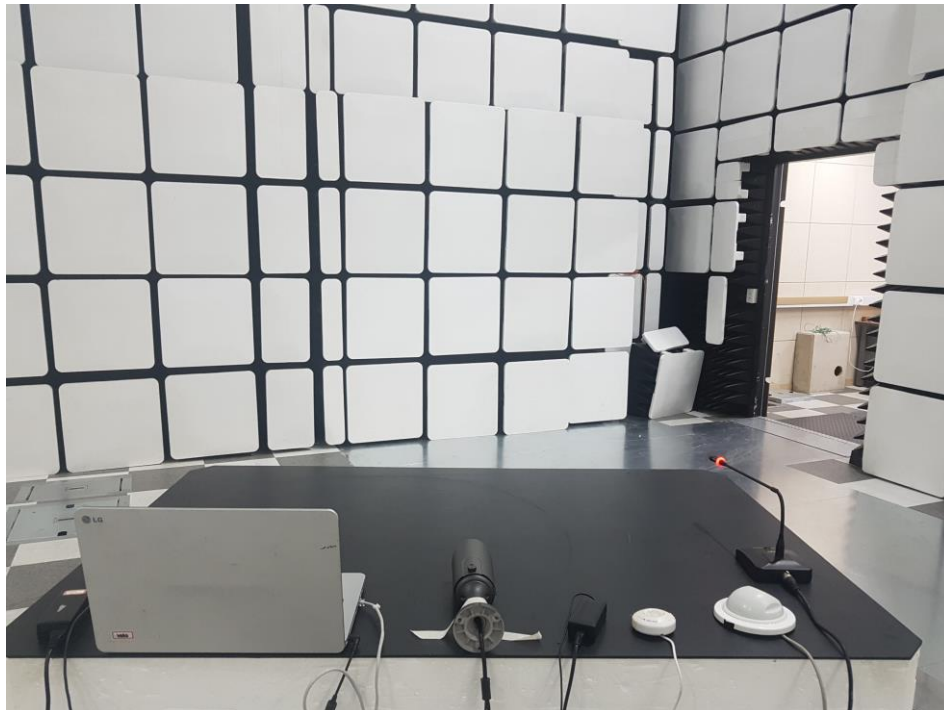
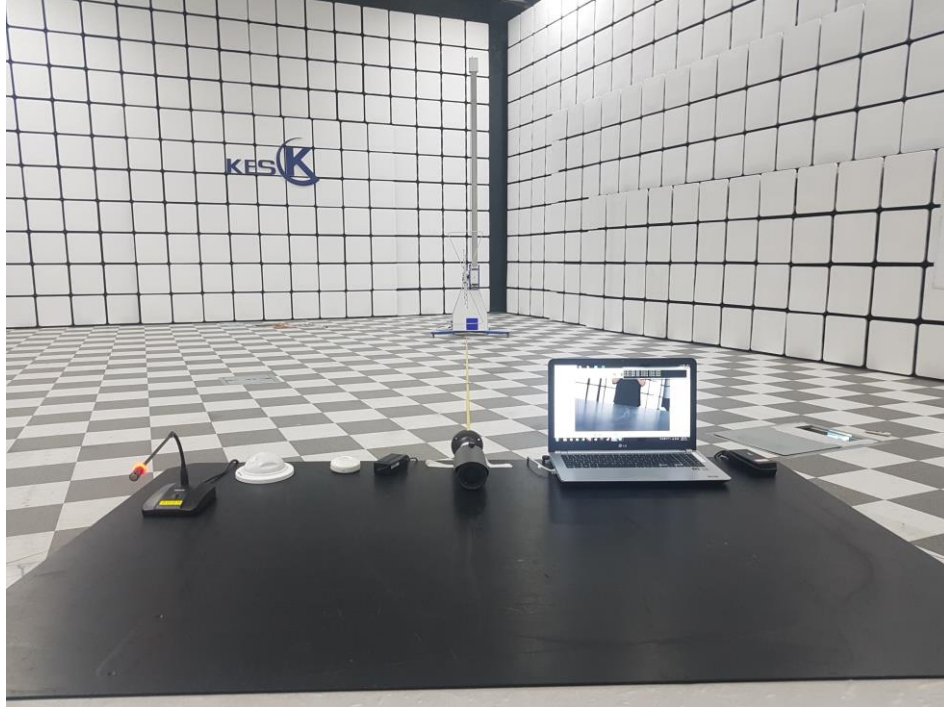
This report shall not be reproduced except in full, without the written approval of KES Co., Ltd.
The results shown in this test report refer only to the sample(s) tested unless otherwise stated.
The authenticity of the test report, contact kes@kes.co.kr

■ PoE Mode

This report shall not be reproduced except in full, without the written approval of KES Co., Ltd.
The results shown in this test report refer only to the sample(s) tested unless otherwise stated.
The authenticity of the test report, contact kes@kes.co.kr

Radiated Electric Field Emissions(Below 1 GHz)

■ DC Mode



This report shall not be reproduced except in full, without the written approval of KES Co., Ltd.
The results shown in this test report refer only to the sample(s) tested unless otherwise stated.
The authenticity of the test report, contact kes@kes.co.kr

■ PoE Mode



This report shall not be reproduced except in full, without the written approval of KES Co., Ltd.
The results shown in this test report refer only to the sample(s) tested unless otherwise stated.
The authenticity of the test report, contact kes@kes.co.kr

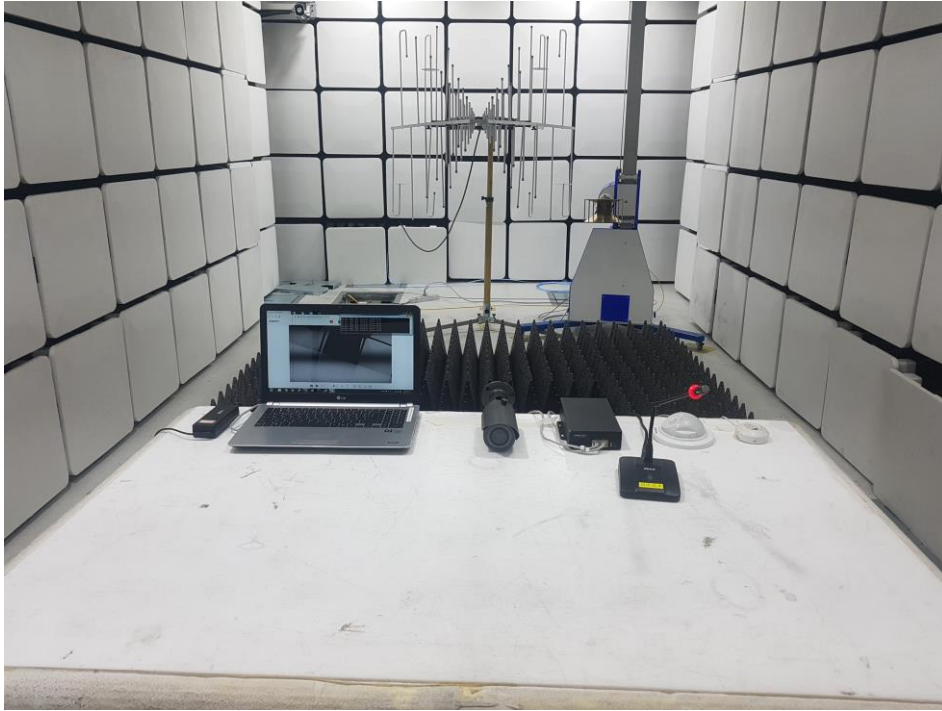
Radiated Electric Field Emissions(Above 1 GHz)

■ DC Mode



This report shall not be reproduced except in full, without the written approval of KES Co., Ltd.
The results shown in this test report refer only to the sample(s) tested unless otherwise stated.
The authenticity of the test report, contact kes@kes.co.kr

■ PoE Mode



This report shall not be reproduced except in full, without the written approval of KES Co., Ltd.
The results shown in this test report refer only to the sample(s) tested unless otherwise stated.
The authenticity of the test report, contact kes@kes.co.kr

Harmonic Current Emissions and Voltage Fluctuations and Flicker

■ DC Mode

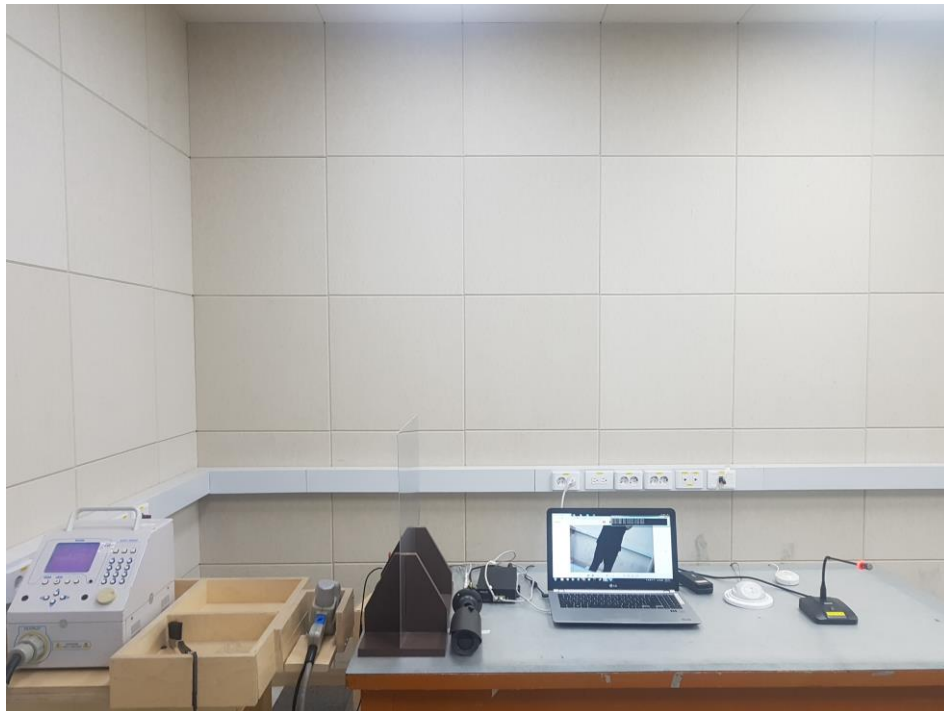


Electrostatic Discharge

■ DC Mode



■ PoE Mode

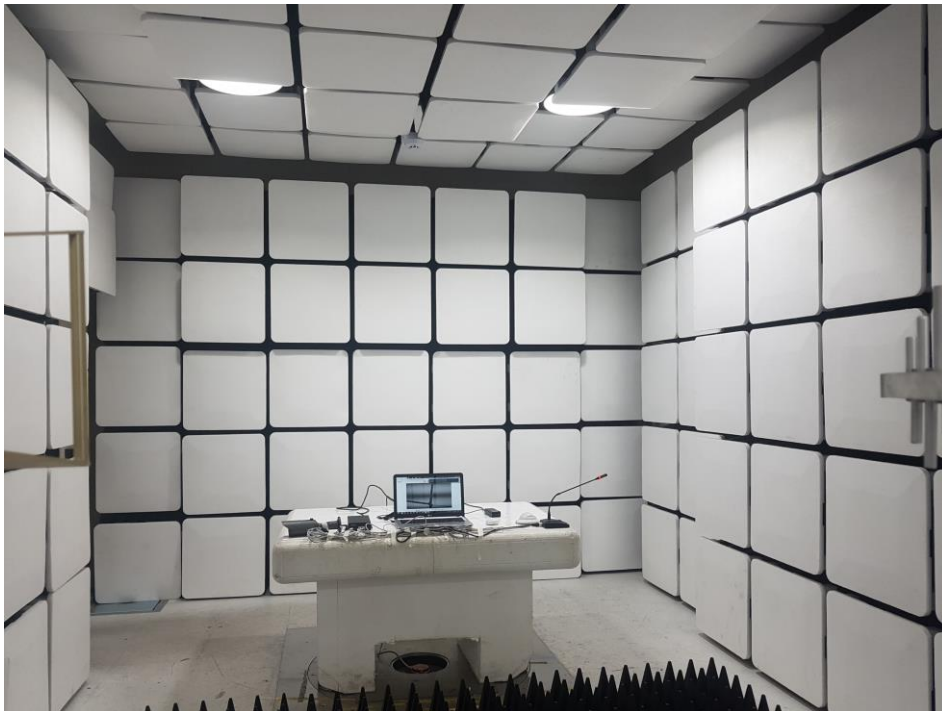


Radiated Electric Field Immunity

■ DC Mode



■ PoE Mode



This report shall not be reproduced except in full, without the written approval of KES Co., Ltd.
The results shown in this test report refer only to the sample(s) tested unless otherwise stated.
The authenticity of the test report, contact kes@kes.co.kr

Electrical Fast Transients/Bursts

■ DC Mode



■ PoE Mode



This report shall not be reproduced except in full, without the written approval of KES Co., Ltd.
The results shown in this test report refer only to the sample(s) tested unless otherwise stated.
The authenticity of the test report, contact kes@kes.co.kr

Surge Transients

■ DC Mode



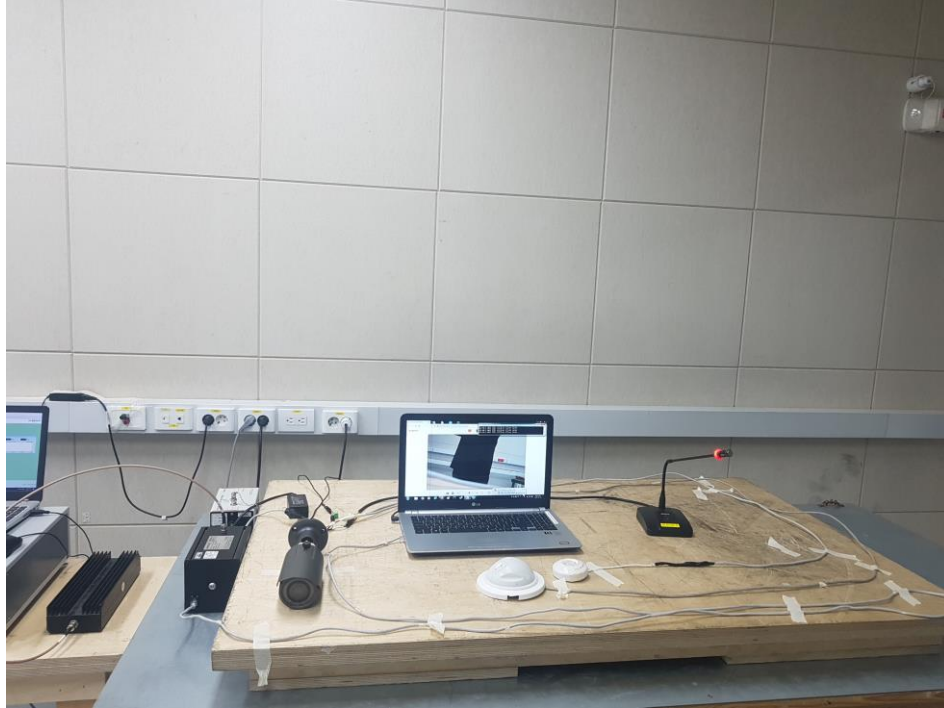
■ PoE Mode



This report shall not be reproduced except in full, without the written approval of KES Co., Ltd.
The results shown in this test report refer only to the sample(s) tested unless otherwise stated.
The authenticity of the test report, contact kes@kes.co.kr

Conducted Disturbance

■ DC Mode



■ PoE Mode



This report shall not be reproduced except in full, without the written approval of KES Co., Ltd.
The results shown in this test report refer only to the sample(s) tested unless otherwise stated.
The authenticity of the test report, contact kes@kes.co.kr

Voltage Dips and Short Interruptions

■ DC Mode



This report shall not be reproduced except in full, without the written approval of KES Co., Ltd.
The results shown in this test report refer only to the sample(s) tested unless otherwise stated.
The authenticity of the test report, contact kes@kes.co.kr

EUT External Photographs

(Top)



(Bottom)



This report shall not be reproduced except in full, without the written approval of KES Co., Ltd.
The results shown in this test report refer only to the sample(s) tested unless otherwise stated.
The authenticity of the test report, contact kes@kes.co.kr

EUT Internal Photographs

(Internal View)



This report shall not be reproduced except in full, without the written approval of KES Co., Ltd.
The results shown in this test report refer only to the sample(s) tested unless otherwise stated.
The authenticity of the test report, contact kes@kes.co.kr

EUT Internal View – Board 1

(Top)



(Bottom)



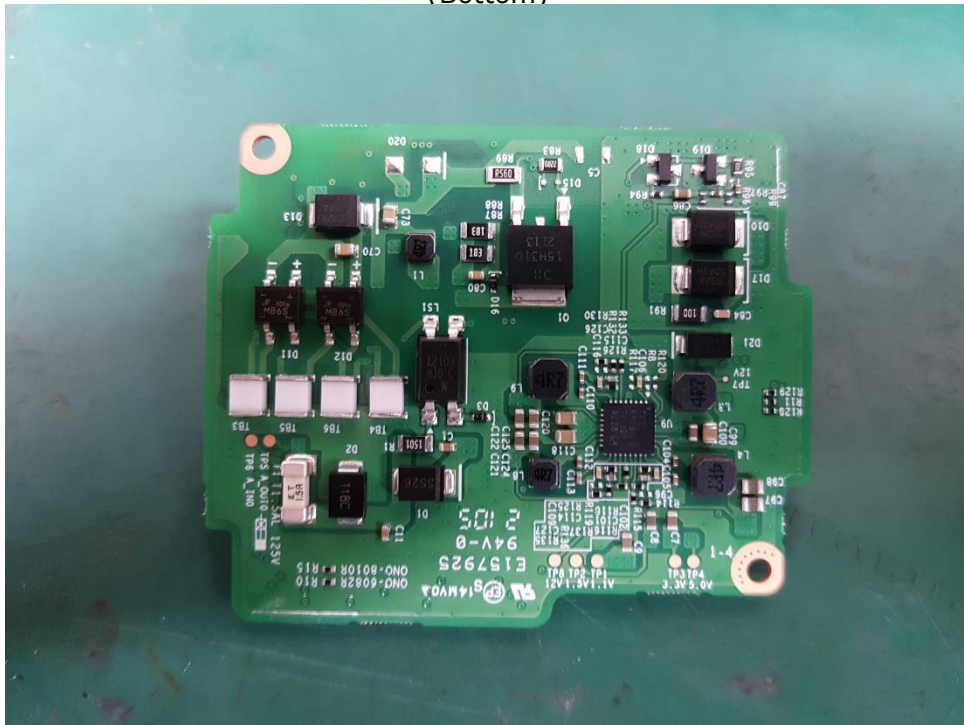
This report shall not be reproduced except in full, without the written approval of KES Co., Ltd.
The results shown in this test report refer only to the sample(s) tested unless otherwise stated.
The authenticity of the test report, contact kes@kes.co.kr

EUT Internal View – Board 2

(Top)



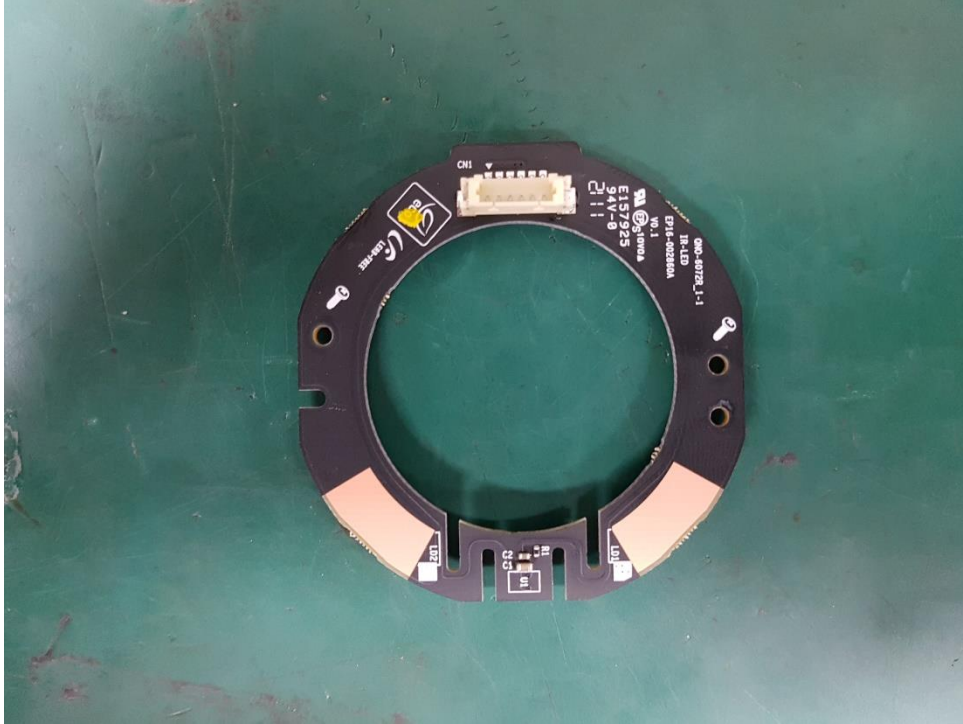
(Bottom)



This report shall not be reproduced except in full, without the written approval of KES Co., Ltd.
The results shown in this test report refer only to the sample(s) tested unless otherwise stated.
The authenticity of the test report, contact kes@kes.co.kr

EUT Internal View – Board 3

(Top)



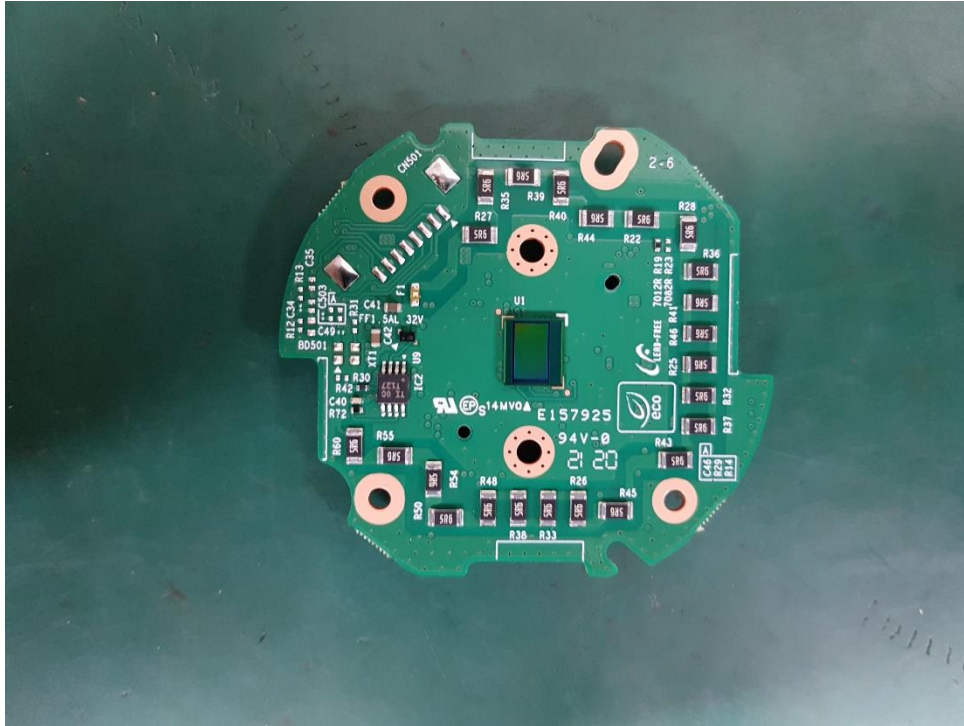
(Bottom)



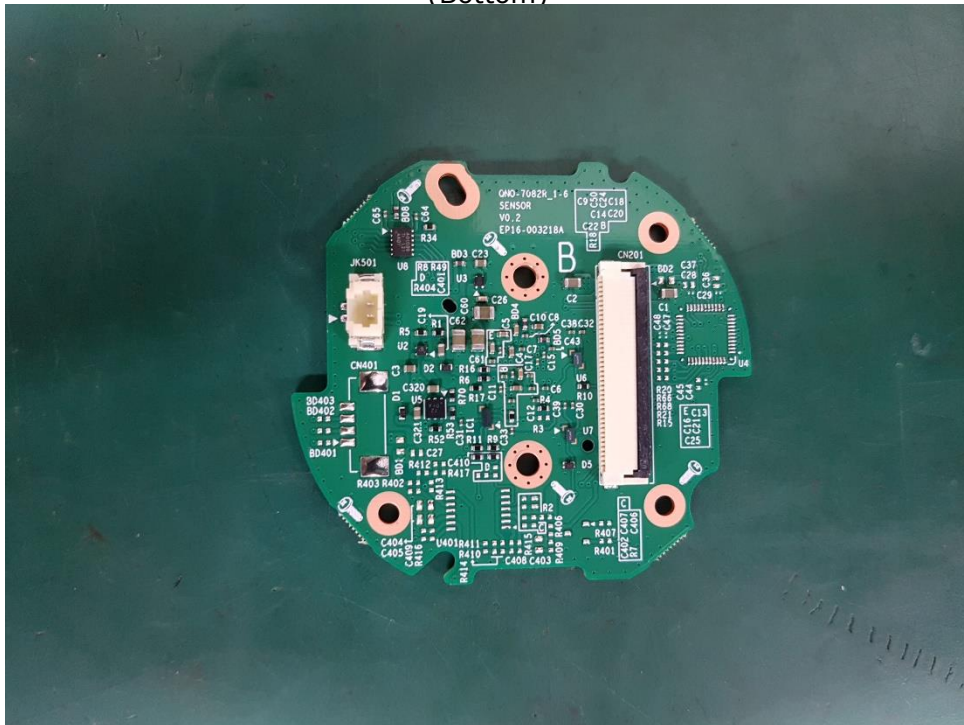
This report shall not be reproduced except in full, without the written approval of KES Co., Ltd.
The results shown in this test report refer only to the sample(s) tested unless otherwise stated.
The authenticity of the test report, contact kes@kes.co.kr

EUT Internal View – Board 4

(Top)



(Bottom)



This report shall not be reproduced except in full, without the written approval of KES Co., Ltd.
 The results shown in this test report refer only to the sample(s) tested unless otherwise stated.
 The authenticity of the test report, contact kes@kes.co.kr

EUT Internal View – Lens

(Top)



(Bottom)



This report shall not be reproduced except in full, without the written approval of KES Co., Ltd.
The results shown in this test report refer only to the sample(s) tested unless otherwise stated.
The authenticity of the test report, contact kes@kes.co.kr

Label and Location

**NETWORK CAMERA**

Model No : QNO-7032R

Manufacturer : HANWHA VISION VIETNAM COMPANY LIMITED

Made in Vietnam

