

**KES Co., Ltd.**

3701, 40, Simin-daero 365beon-gil,
Dongan-gu, Anyang-si, Gyeonggi-do, 14057, Korea
Tel: +82-31-425-6200 / Fax: +82-31-424-0450
www.kes.co.kr

Report No.:

KES-EM-21T0630-R1

Page (1) of (39)

EMC TEST REPORT

Test Report No. : KES-EM-21T0630-R1
Date of Issue : Feb. 24, 2023
Product name : NETWORK CAMERA
Model/Type No. : QNO-7032R
Variant Model : QNO-7022R, QNO-7012R
Applicant : Hanwha Vision Co., Ltd
Applicant Address : 6, Pangyo-ro 319Beon-gil, Bundang-gu, Seongnam-si,
Gyeonggi-do, Republic of Korea
Manufacturer : 1. HANWHA VISION VIETNAM COMPANY LIMITED
2. D-TECH CO.,LTD.
Manufacturer Address : 1. Lot O-2, Que Vo Industrial Zone extended area,
Nam Son commune, Bac Ninh city, Bac Ninh province, Vietnam
2. 173-25, Saneop-ro, Gwonseon-gu, Suwon-si, Gyeonggi- do,
Korea (Suwon Industrial Complex)
Equipment authorization : **Supplier's Declaration of Conformity**
Date of Receipt : Jun. 23, 2021
Test date : Jul. 11, 2021 ~ Jul. 12, 2021
Test Results : ☒ **In Compliance** ☐ **Not in Compliance**

Tested by

Sung Keun, Park
EMC Test Engineer

Reviewed by

Dong-Hun, Jang
EMC Technical Manager

Tested by Ki Man, Kim
(Retired person)
Proxy signature : Sung Keun, Park

This test report is not related to KS Q ISO/IEC 17025 and KOLAS.

This report shall not be reproduced except in full, without the written approval of KES Co., Ltd.
The results shown in this test report refer only to the sample(s) tested unless otherwise stated.
The authenticity of the test report, contact kes@kes.co.kr

**KES Co., Ltd.**

3701, 40, Simin-daero 365beon-gil,
Dongan-gu, Anyang-si, Gyeonggi-do, 14057, Korea
Tel: +82-31-425-6200 / Fax: +82-31-424-0450
www.kes.co.kr

Report No.:

KES-EM-21T0630-R1

Page (2) of (39)

REPORT REVISION HISTORY

Date	Test Report No.	Revision History
Jul. 21, 2021	KES-EM-21T0630	Issued
Feb. 24, 2023	KES-EM-21T0630-R1	Change the Applicant and manufacturer at the request of the customer

This report shall not be reproduced except in full, without the written approval of KES Co., Ltd. This document may be altered or revised by KES Co., Ltd. personnel only, and shall be noted in the revision section of the document. Any alteration of this document not carried out by KES Co., Ltd. will constitute fraud and shall nullify the document.

This report shall not be reproduced except in full, without the written approval of KES Co., Ltd.
The results shown in this test report refer only to the sample(s) tested unless otherwise stated.
The authenticity of the test report, contact kes@kes.co.kr



KES Co., Ltd.

3701, 40, Simin-daero 365beon-gil,
Dongan-gu, Anyang-si, Gyeonggi-do, 14057, Korea
Tel: +82-31-425-6200 / Fax: +82-31-424-0450
www.kes.co.kr

Report No.:

KES-EM-21T0630-R1

Page (3) of (39)

TABLE OF CONTENTS

1.0	General Product Description.....	4
1.1	Test Voltage & Frequency	6
1.2	Variant Model Differences	6
1.3	Device Modifications	6
1.4	Equipment Under Test.....	6
1.5	Support Equipments	6
1.6	External I/O Cabling	7
1.7	EUT Operating Mode(s)	8
1.8	Configuration.....	9
1.9	Remarks when standards applied	10
1.10	Calibration Details of Equipment Used for Measurement	10
1.11	Test Facility	10
1.12	Laboratory Accreditations and Listings	10
2.0	Test Regulations.....	11
2.1	Conducted Emissions at Mains Power Ports	13
2.2	Radiated Electric Field Emissions(Below 1 GHz)	14
2.3	Radiated Electric Field Emissions(Above 1 GHz)	15
APPENDIX A – TEST DATA.....		16
Conducted Emissions at Mains Power Ports.....		16
Radiated Electric Field Emissions(Below 1 GHz)		21
Radiated Electric Field Emissions(Above 1 GHz)		25
Test Setup Photos and Configuration		27
Conducted Emissions at Mains Power Ports.....		27
Radiated Electric Field Emissions(Below 1 GHz)		29
Radiated Electric Field Emissions(Above 1 GHz)		31
EUT External Photographs		33
EUT Internal Photographs		34

This report shall not be reproduced except in full, without the written approval of KES Co., Ltd.
The results shown in this test report refer only to the sample(s) tested unless otherwise stated.
The authenticity of the test report, contact kes@kes.co.kr



KES Co., Ltd.

3701, 40, Simin-daero 365beon-gil,
Dongan-gu, Anyang-si, Gyeonggi-do, 14057, Korea
Tel: +82-31-425-6200 / Fax: +82-31-424-0450
www.kes.co.kr

Report No.:

KES-EM-21T0630-R1

Page (4) of (39)

1.0 General Product Description

Main Specifications of EUT are:

Video	
Imaging Device	1/3" CMOS
Resolution	2560 x 1440, 1920 x 1080, 1280 x 960, 1280 x 720, 800 x 600, 800 x 448, 720 x 576, 720 x 480, 640 x 480, 640 x 360, 320 x 240
Max. Framerate	H.265/H.264 : Max. 30fps at 4M all resolutions, MJPEG : Max. 15fps
NETD	None
Pixel Size	None
Min. Illumination	Color : 0.15Lux (F2.0, 1/30sec) B/W : 0Lux (IR LED On)
Video Out	CVBS : 1.0 Vpp/75Ω composite, 720x480(N), 720x576(P) for installation
Video Transmission Distance	None
Lens	
Focal Length (Zoom Ratio)	6mm fixed focal
Max. Aperture Ratio	F2.0
Angular Field of View	H : 49.0°, V : 27.6°, D : 55.6°
Min. Object Distance	None
Focus Control	Fixed
Lens Type	None
Mount Type	None
Optional Lens	None
Pan / Tilt / Rotate	
Pan / Tilt / Rotate Range	None
Pan Range	None
Pan Speed	None
Tilt Range	None
Tilt Speed	None
Rotate Range	None
Sequence	None
Preset Accuracy	None
Operational	
Camera Title	Displayed up to 85 characters
Direction Indicator	None
Day & Night	Auto(ICR)
Backlight Compensation	BLC, WDR, SSDR
Wide Dynamic Range	120dB
Digital Noise Reduction	SSNR
Digital Image Stabilization	None
Defog	None
Motion Detection	4ea, polygonal zones
Privacy Masking	6ea, rectangular zones
Gain Control	Low / Middle / High
White Balance	ATW / AWC / Manual / Indoor / Outdoor
LDC	Support
Electronic Shutter Speed	Minimum/Maximum/Anti flicker (1/5~1/12,000sec)
Digital PTZ	None
Video Rotation	Flip, Mirror, Hallway view(90°/270°)
Analytics	Defocus detection, Directional detection, Motion detection, Enter/Exit, Tampering, Virtual line
Business Intelligence	None
Serial Interface	None
Alarm I/O	Input 1ea / Output 1ea
Alarm Triggers	Analytics, Network disconnect, Alarm input
Alarm Events	File upload via FTP and e-mail, Notification via e-mail, SD/SDHC/SDXC or NAS recording at event triggers, Alarm output, Handover
Audio In	Selectable(mic in/line in)

This report shall not be reproduced except in full, without the written approval of KES Co., Ltd.
The results shown in this test report refer only to the sample(s) tested unless otherwise stated.
The authenticity of the test report, contact kes@kes.co.kr



KES Co., Ltd.

3701, 40, Simin-daero 365beon-gil,
Dongan-gu, Anyang-si, Gyeonggi-do, 14057, Korea
Tel: +82-31-425-6200 / Fax: +82-31-424-0450
www.kes.co.kr

Report No.:

KES-EM-21T0630-R1

Page (5) of (39)

	Supply voltage: 2.5VDC(4mA), Input impedance: 2K Ohm
Audio Out	None
IR Viewable Length	30m (98.42ft)
IR Illuminator (Optional)	None
Water Removal	None
Auto Tracking	None
Coaxial Protocol	None
Color Palettes	None
Radiometry	
Temperature Detect Range	None
Temperature Accuracy	None
Temperature Detection	None
Additional	None
Network	
Ethernet	RJ-45 (10/100BASE-T)
Video Compression	H.265/H.264 : Main/High, MJPEG
Audio Compression	G.711 u-law / G.726 Selectable G.726(ADPCM) 8KHz, G.711 8KHz, G.726 16Kbps, 24Kbps, 32Kbps, 40Kbps
Smart Codec	Manual (5ea area), WiseStream II
Video Quality Adjustment	H.265/H.264 : Target bitrate level control, MJPEG : Quality level control
Bitrate Control	H.264/H.265 : CBR or VBR MJPEG : VBR
Streaming	Unicast (6 users) / Multicast Multiple streaming (Up to 3 profiles)
Protocol	IPv4, IPv6, TCP/IP, UDP/IP, RTP(UDP), RTP(TCP), RTCP, RTSP, NTP, HTTP, HTTPS, SSL/TLS, DHCP, PPPoE, FTP, SMTP, ICMP, IGMP, SNMPv1/v2c/v3(MIB-2), ARP, DNS, DDNS, QoS, PIM-SM, UPnP, Bonjour, LLDP
Security	HTTPS(SSL) Login Authentication Digest Login Authentication IP Address Filtering User access Log 802.1X Authentication
Application Programming Interface	ONVIF Profile S/G/T, SUNAPI (HTTP API)
General	
Webpage Language	English, Korean, Chinese, French, Italian, Spanish, German, Japanese, Russian, Swedish, Portuguese, Czech, Polish, Turkish, Dutch, Hungarian, Greek
Web Viewer	
Edge Storage	Micro SD/SDHC/SDXC 1slot 128GB
Memory	512MB RAM, 256MB Flash
Environmental & Electrical	
Operating Temperature / Humidity	-40°C~+55°C (-40°F~+131°F) / Less than 95% RH * Start up should be done at -30°C or above
Storage Temperature / Humidity	-40°C~+60°C (-40°F~+140°F) / Less than 95% RH
Certification	IP66, IK10
Input Voltage	PoE(IEEE802.3af, Class3), 12VDC
Power Consumption	PoE: Max 10.7W, typical 8W 12VDC: Max 9.1W, typical 6.8W
Mechanical	
Color / Material	Dark grey / Aluminum
RAL Code	
Product Dimensions / Weight	Ø70.0 x 246.0mm (Ø2.76 x 9.69"), 700g (1.543 lb)

This report shall not be reproduced except in full, without the written approval of KES Co., Ltd.
The results shown in this test report refer only to the sample(s) tested unless otherwise stated.
The authenticity of the test report, contact kes@kes.co.kr



1.1 Test Voltage & Frequency

Unless indicated otherwise on the individual data sheet or test results, the test voltage and frequency was as indicated below.

☒ AC 120 V, 60 Hz ☒ PoE

1.2 Variant Model Differences

Addition of derivative models for place of sale management

1.3 Device Modifications

Not applicable

1.4 Equipment Under Test

Description	Model Number	Serial Number	Manufacturer	Remarks
NETWORK CAMERA	QNO-7032R	-	HANWHA VISION VIETNAM COMPANY LIMITED	EUT

1.5 Support Equipments

Description	Model Number	Serial Number	Manufacturer	Remarks
Adaptor	2ACB022F	-	Channel Well Technology (Guangzhou) Co., Ltd.	-
PoE Adaptor	PT-PSE109GBRO-AH	PT1850221049	Dongguan PROCET Network Technology Co.,Ltd	-
Notebook	LG15N54	410NZGK015231	LG	-
Notebook Adaptor	ADP-90WH B	84ZW19F1663	DELTA ELECTRONICS (JIANGSU) LTD.	-
Alarm1	-	-	-	-
Alarm2	-	-	-	-
Micro SD Card	-	-	Sandisk	8 GB
MIC	MP1000	-	-	-

**KES Co., Ltd.**

3701, 40, Simin-daero 365beon-gil,
Dongan-gu, Anyang-si, Gyeonggi-do, 14057, Korea
Tel: +82-31-425-6200 / Fax: +82-31-424-0450
www.kes.co.kr

Report No.:

KES-EM-21T0630-R1

Page (7) of (39)

1.6 External I/O Cabling

■ DC Mode

Start		END		Cable Spec.	
Description	I/O Port	Description	I/O Port	Length	Shield
NETWORK CAMERA (EUT)	RJ-45 (LAN)	Notebook	RJ-45 (LAN)	3.0	U
	Slot	Micro SD Card	Slot	-	-
	2 Pin	Alarm1	2 Pin	3.0	U
	2 Pin	Alarm2	2 Pin	3.0	U
	3.5 mm	MIC	3.5 mm	1.7	U
	2 Pin	Adaptor	2 Pin	1.6	U
Notebook	JACK	Notebook Adaptor	JACK	1.7	U

* Unshielded=U, Shielded=S

■ PoE Mode

Start		END		Cable Spec.	
Description	I/O Port	Description	I/O Port	Length	Shield
NETWORK CAMERA (EUT)	RJ-45 (PoE)	PoE Adaptor	RJ-45 (PoE)	3.0	U
	Slot	Micro SD Card	Slot	-	-
	2 Pin	Alarm1	2 Pin	3.0	U
	2 Pin	Alarm2	2 Pin	3.0	U
	3.5 mm	MIC	3.5 mm	1.7	U
Notebook	RJ-45 (LAN)	PoE Adaptor	RJ-45 (LAN)	3.5	U
	JACK	Notebook Adaptor	JACK	1.7	U

* Unshielded=U, Shielded=S

This report shall not be reproduced except in full, without the written approval of KES Co., Ltd.
The results shown in this test report refer only to the sample(s) tested unless otherwise stated.
The authenticity of the test report, contact kes@kes.co.kr

**KES Co., Ltd.**

3701, 40, Simin-daero 365beon-gil,
Dongan-gu, Anyang-si, Gyeonggi-do, 14057, Korea
Tel: +82-31-425-6200 / Fax: +82-31-424-0450
www.kes.co.kr

Report No.:

KES-EM-21T0630-R1

Page (8) of (39)

1.7 EUT Operating Mode(s)

Test Mode	operating
DC Mode	EUT Monitoring, Ping Test
PoE Mode	

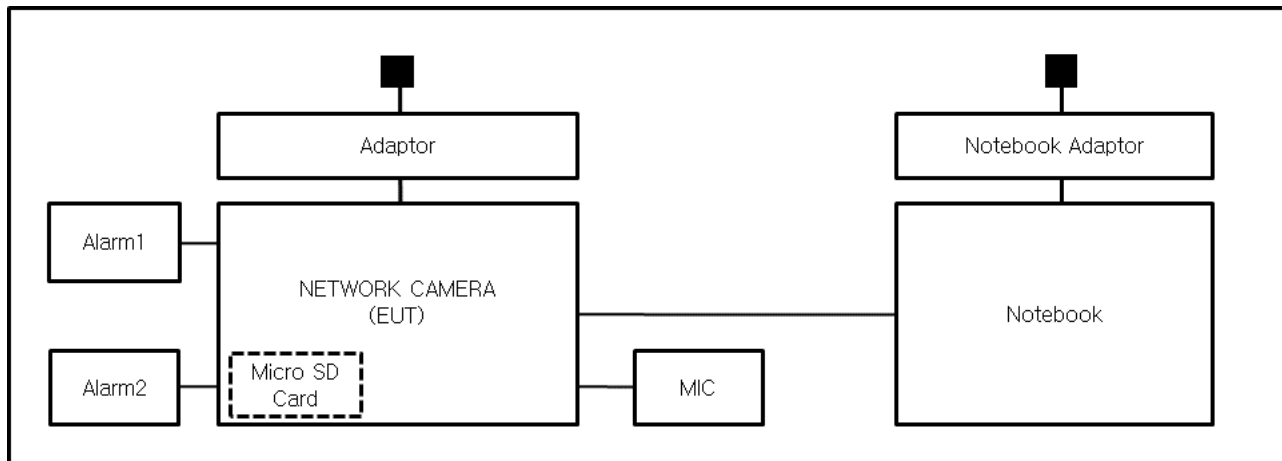
EUT Test operating S/W		
Name	Version	Manufacture Company
Web Viewer	-	Hanwha Vision Co., Ltd

This report shall not be reproduced except in full, without the written approval of KES Co., Ltd.
The results shown in this test report refer only to the sample(s) tested unless otherwise stated.
The authenticity of the test report, contact kes@kes.co.kr

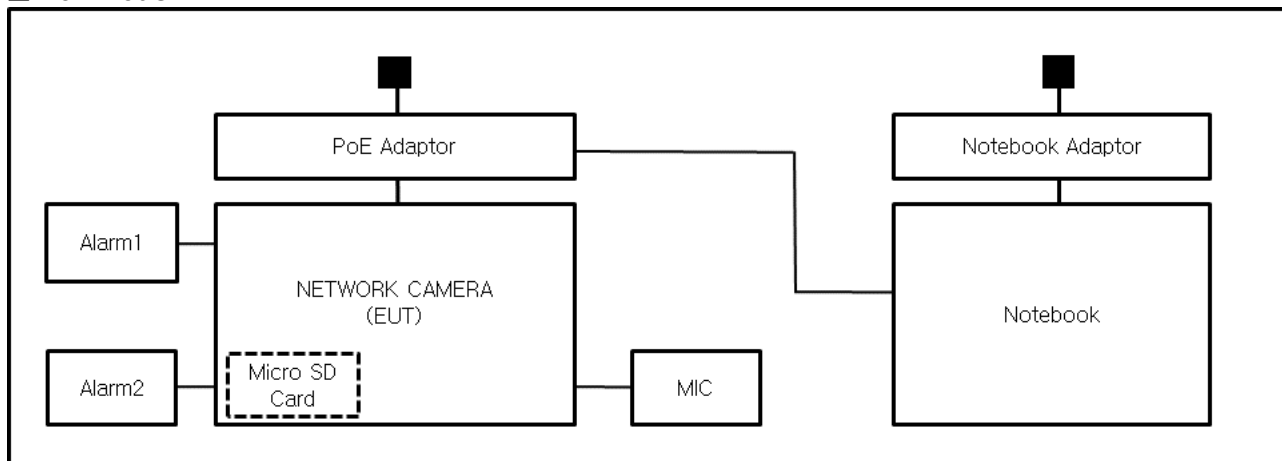
1.8 Configuration

■ AC Main
 □ DC Main

■ DC Mode



■ PoE Mode



1.9 Remarks when standards applied

N/A







1.10 Calibration Details of Equipment Used for Measurement

Test equipment and test accessories are calibrated on regular basis. The maximum time between calibrations is one year or what is recommended by the manufacturer, whichever is less.

1.11 Test Facility

The measurement facility is located at 473-21, Gayeo-ro, Yeosu-si, Gyeonggi-do, 12658, Korea, Republic of. The sites are constructed in conformance with the requirements of ANSI C63.4a-2017 and CISPR 16-1-4:2019

1.12 Laboratory Accreditations and Listings

	Agency	Scope of Accreditation	Logo
KOREA	RRA	EMI (3 m & 10 m Semi-Anechoic Chamber and conducted test site) EMS (ESD, RS, EFT/Burst, Surge, CS, Magnetic, Dips and interruptions)	 KR0100
International	KOLAS	EMI (3 m & 10 m Semi-Anechoic Chamber and conducted test site) EMS (ESD, RS, EFT/Burst, Surge, CS, Magnetic, Dips and interruptions)	 KT489
USA	FCC	3 m & 10 m Semi-Anechoic Chamber Conducted test site to perform FCC Part 15/18 measurements.	 KR0100
Canada	ISED	3 m & 10 m Semi-Anechoic Chamber and Conducted test site	 23298
JAPAN	VCCI	EMI (3 m & 10 m Semi-Anechoic Chamber and conducted test site)	 C-20136, T-20137, R-20181, G-20176
Europe	TÜV SÜD	EMI (3 m & 10 m Semi-Anechoic Chamber and conducted test site) EMS (ESD, RS, EFT/Burst, Surge, CS, Magnetic, Dips and interruptions)	 CARAT 001633 0004

2.0 Test Regulations

The emissions tests were performed according to following regulations:

☐ **EMC – Directive 2014/30/EU**

☐ EN 61000-6-3:2011

☐ EN 61000-6-1:2007

☐ EN 61000-6-4:2007 +A1:2011

☐ EN 61000-6-2:2005

☐ EN 55011:2007 +A1:2010

☐ Group 1
☐ Class A

☐ Group 2
☐ Class B

☐ EN 55014-1:2006 +A2:2011

☐ EN 55014-2:1997 +A2:2008

☐ EN 55015:2013

☐ EN 55032:2015

☐ Class A

☐ Class B

☐ EN 55024:2010

☐ EN 50130-4:2011 +A1:2014

☐ EN 61000-3-2:2014

☐ EN 61000-3-3:2013

☐ EN 61326-1:2013



KES Co., Ltd.

3701, 40, Simin-daero 365beon-gil,
Dongan-gu, Anyang-si, Gyeonggi-do, 14057, Korea
Tel: +82-31-425-6200 / Fax: +82-31-424-0450
www.kes.co.kr

Report No.:

KES-EM-21T0630-R1

Page (12) of (39)

☐ **VCCI-CISPR 32:2016**

☐ Class A

☐ Class B

☐ **AS/NZS CISPR32:2015**

☐ Class A

☐ Class B

☒ **47 CFR Part 15, Subpart B**

☐ CISPR 22:2009 +A1:2010

☐ Class A

☐ Class B

☒ ANSI C63.4-2017

☒ Class A

☐ Class B

☒ **IC Regulation ICES-003 Issue 7**

☒ CAN/CSA CISPR 32-17

☒ Class A

☐ Class B

☐ ANSI C63.4-2017

☐ Class A

☐ Class B

☐ **RE- Directive 2014/53/EU**

☐ EN 301 489-1 V1.9.2

☐ Equipment for fixed use

☐ Equipment for vehicular use

☐ Equipment for portable use

☐ EN 301 489-3 V1.6.1

☐ EN 301 489-17 V2.2.1

☐ EN 60945:2002

This report shall not be reproduced except in full, without the written approval of KES Co., Ltd.

The results shown in this test report refer only to the sample(s) tested unless otherwise stated.

The authenticity of the test report, contact kes@kes.co.kr

**KES Co., Ltd.**

3701, 40, Simin-daero 365beon-gil,
Dongan-gu, Anyang-si, Gyeonggi-do, 14057, Korea
Tel: +82-31-425-6200 / Fax: +82-31-424-0450
www.kes.co.kr

Report No.:

KES-EM-21T0630-R1

Page (13) of (39)

2.1 Conducted Emissions at Mains Power Ports

Test Date

Jul. 11, 2021

Test Location

Electro wave Shieldroom #6

Test Equipment

Used	Description	Model Number	Manufacturer	Serial Number	Cal. Due
<input checked="" type="checkbox"/>	EMI Test S/W	EMC32	R & S	9.12.00	-
<input checked="" type="checkbox"/>	EMI TEST RECEIVER	ESR3	R & S	101783	01, 15, 2022
<input checked="" type="checkbox"/>	LISN	ENV216	R & S	101787	12, 29, 2021
<input checked="" type="checkbox"/>	LISN	ESH2-Z5	R & S	100450	12, 29, 2021
<input checked="" type="checkbox"/>	PULSE LIMITER	ESH3-Z2	R & S	101915	12, 29, 2021

Test Conditions

Temperature: (25,0 ± 0,2) °C

Relative Humidity: (47,3 ± 0,2) % R.H.

Frequency Range of Measurement

150 kHz to 30 MHz

Instrument Settings

IF Band Width: 9 kHz

Test Results

The requirements are:

- ☒ PASS
☐ NOT PASS
☐ NOT APPLICABLE

RemarksSee Appendix A for test data.

This report shall not be reproduced except in full, without the written approval of KES Co., Ltd.
The results shown in this test report refer only to the sample(s) tested unless otherwise stated.
The authenticity of the test report, contact kes@kes.co.kr

**KES Co., Ltd.**

3701, 40, Simin-daero 365beon-gil,
Dongan-gu, Anyang-si, Gyeonggi-do, 14057, Korea
Tel: +82-31-425-6200 / Fax: +82-31-424-0450
www.kes.co.kr

Report No.:

KES-EM-21T0630-R1

Page (14) of (39)

2.2 Radiated Electric Field Emissions(Below 1 GHz)

Test Date

Jul. 11, 2021

Test Location☐ OPEN AREA TEST SITE #2☒ SEMI ANECHOIC CHAMBER #4(10m)**Test Equipment**

Used	Description	Model Number	Manufacturer	Serial Number	Cal. Due
<input checked="" type="checkbox"/>	EMI Test S/W	EP5/RE	TOYO Corporation	6.0.0	-
<input checked="" type="checkbox"/>	EMI TEST RECEIVER	ESU26	R & S	100551	04, 01, 2022
<input checked="" type="checkbox"/>	AMPLIFIER	SCU 01	R & S	100603	11, 25, 2021
<input checked="" type="checkbox"/>	TRILOG-BROADBAND ANTENNA	VULB9163	Schwarzbeck	715	12, 08, 2022
<input checked="" type="checkbox"/>	ATTENUATOR	8491A	HP	32173	03, 10, 2022

Test Conditions

Temperature: (24,4 ± 0,2) °C

Relative Humidity: (47,2 ± 0,4) % R.H.

Frequency Range of Measurement

30 MHz to 1 GHz

Instrument Settings

IF Band Width: 120 kHz

Test Results

The requirements are:

- ☒ PASS
☐ NOT PASS
☐ NOT APPLICABLE

RemarksSee Appendix A for test data.

This report shall not be reproduced except in full, without the written approval of KES Co., Ltd.

The results shown in this test report refer only to the sample(s) tested unless otherwise stated.

The authenticity of the test report, contact kes@kes.co.kr

**KES Co., Ltd.**

3701, 40, Simin-daero 365beon-gil,
Dongan-gu, Anyang-si, Gyeonggi-do, 14057, Korea
Tel: +82-31-425-6200 / Fax: +82-31-424-0450
www.kes.co.kr

Report No.:

KES-EM-21T0630-R1

Page (15) of (39)

2.3 Radiated Electric Field Emissions(Above 1 GHz)

Test Date

Jul. 12, 2021

Test Location

SEMI ANECHOIC CHAMBER #5

Test Equipment

Used	Description	Model Number	Manufacturer	Serial Number	Cal. Due
<input checked="" type="checkbox"/>	EMI Test S/W	EP5/RE	TOYO Corporation	6.0.120	-
<input checked="" type="checkbox"/>	EMI TEST RECEIVER	ESU26	Rohde & Schwarz	100552	04, 01, 2022
<input checked="" type="checkbox"/>	HORN ANTENNA	BBHA 9120D	SCHWARZBECK	9120D-1802	12, 14, 2021
<input checked="" type="checkbox"/>	PREAMPLIFIER	8449B	HP	3008A00538	06, 21, 2022

Test Conditions

Temperature: (25,2 ± 0,3) °C

Relative Humidity: (46,0 ± 0,5) % R.H.

Frequency Range of Measurement

1 GHz to 5 GHz

Instrument Settings

IF Band Width: 1 MHz

Test Results

The requirements are:

☒ PASS☐ NOT PASS☐ NOT APPLICABLE**Remarks**See Appendix A for test data.

This report shall not be reproduced except in full, without the written approval of KES Co., Ltd.

The results shown in this test report refer only to the sample(s) tested unless otherwise stated.

The authenticity of the test report, contact kes@kes.co.kr

APPENDIX A – TEST DATA

Conducted Emissions at Mains Power Ports

■ DC Mode

HOT LINE

Common Information

Test Description:

Conducted Emission

Model No.:

QNO-7032R

Phase:

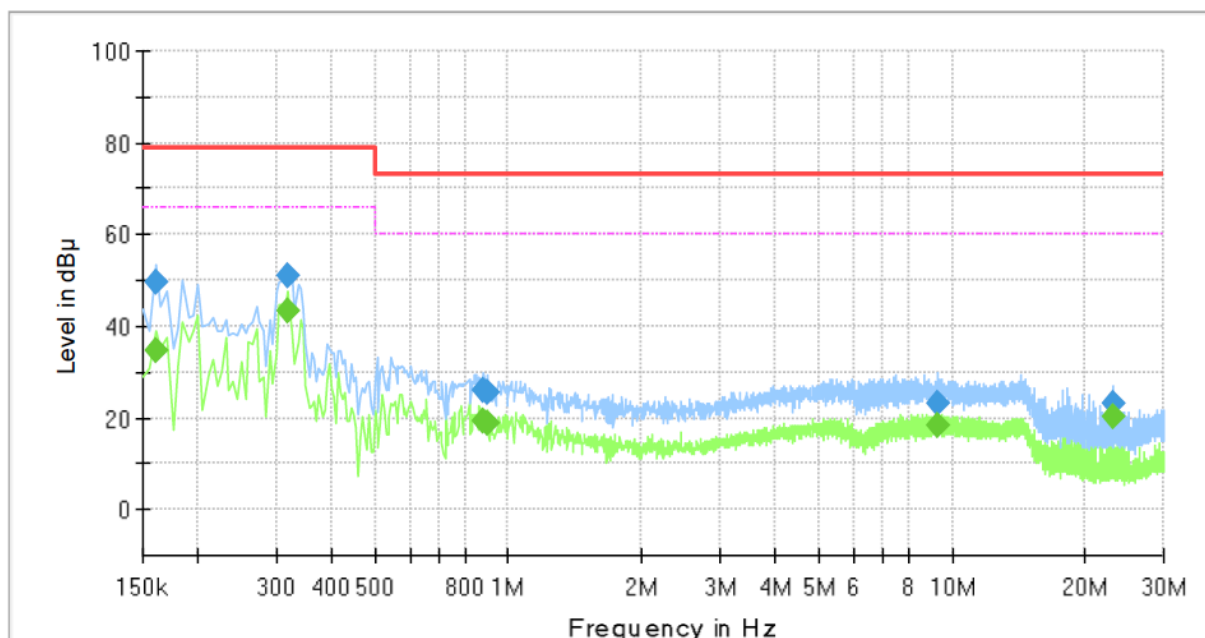
L1

Mode:

DC

Operator Name:

KES



Final Result

Frequency (MHz)	QuasiPeak (dBμV)	CAverage (dBμV)	Limit (dBμV)	Margin (dB)	Meas. Time (ms)	Bandwidth (kHz)	Line	Corr. (dB)
0.160000	---	34.68	66.00	31.32	1000.0	9.000	L1	19.4
0.160000	49.56	---	79.00	29.44	1000.0	9.000	L1	19.4
0.320000	---	43.17	66.00	22.83	1000.0	9.000	L1	19.5
0.320000	50.93	---	79.00	28.07	1000.0	9.000	L1	19.5
0.880000	---	19.53	60.00	40.47	1000.0	9.000	L1	20.0
0.880000	25.84	---	73.00	47.16	1000.0	9.000	L1	20.0
0.895000	---	18.85	60.00	41.15	1000.0	9.000	L1	20.1
0.895000	25.78	---	73.00	47.22	1000.0	9.000	L1	20.1
9.245000	---	18.43	60.00	41.57	1000.0	9.000	L1	19.8
9.245000	23.35	---	73.00	49.65	1000.0	9.000	L1	19.8
23.130000	---	20.33	60.00	39.67	1000.0	9.000	L1	20.1
23.130000	23.13	---	73.00	49.87	1000.0	9.000	L1	20.1

This report shall not be reproduced except in full, without the written approval of KES Co., Ltd.

The results shown in this test report refer only to the sample(s) tested unless otherwise stated.

The authenticity of the test report, contact kes@kes.co.kr



KES Co., Ltd.

3701, 40, Simin-daero 365beon-gil,
Dongan-gu, Anyang-si, Gyeonggi-do, 14057, Korea
Tel: +82-31-425-6200 / Fax: +82-31-424-0450
www.kes.co.kr

Report No.:

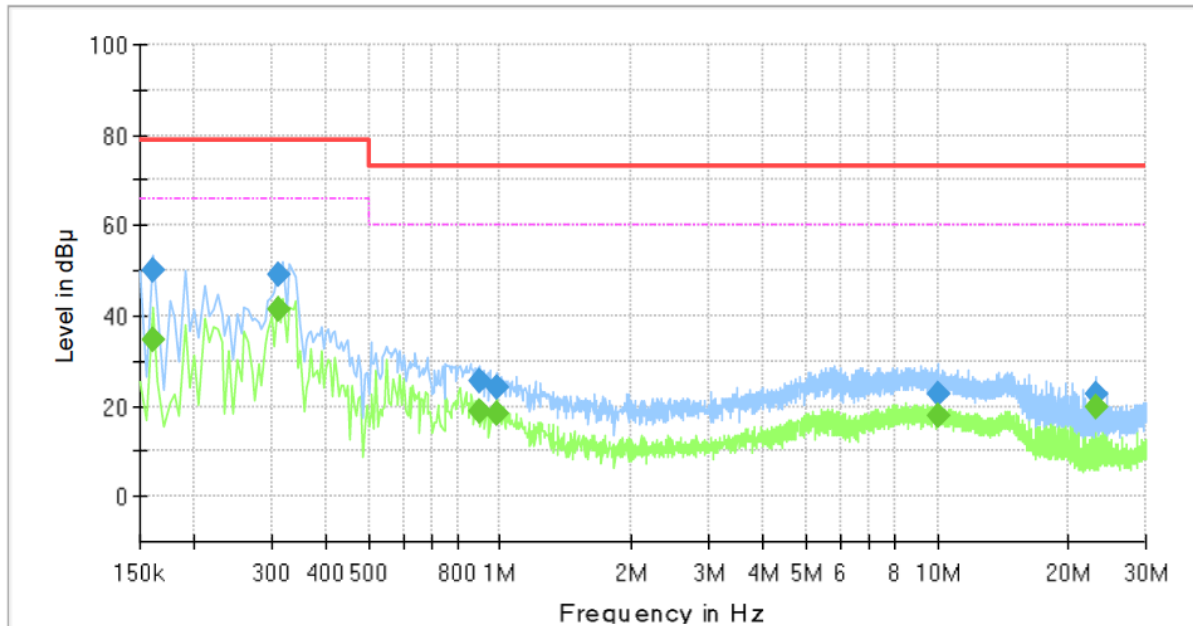
KES-EM-21T0630-R1

Page (17) of (39)

NEUTRAL LINE

Common Information

Test Description:	Conducted Emission
Model No.:	QNO-7032R
Phase:	N
Mode:	DC
Operator Name:	KES



Final Result

Frequency (MHz)	QuasiPeak (dBμV)	CAverage (dBμV)	Limit (dBμV)	Margin (dB)	Meas. Time (ms)	Bandwidth (kHz)	Line	Corr. (dB)
0.160000	---	34.74	66.00	31.26	1000.0	9.000	N	19.4
0.160000	50.19	---	79.00	28.81	1000.0	9.000	N	19.4
0.310000	---	41.38	66.00	24.62	1000.0	9.000	N	19.5
0.310000	48.96	---	79.00	30.04	1000.0	9.000	N	19.5
0.895000	---	18.78	60.00	41.22	1000.0	9.000	N	20.1
0.895000	25.46	---	73.00	47.54	1000.0	9.000	N	20.1
0.985000	---	18.45	60.00	41.55	1000.0	9.000	N	20.0
0.985000	23.89	---	73.00	49.11	1000.0	9.000	N	20.0
10.065000	---	17.86	60.00	42.14	1000.0	9.000	N	19.9
10.065000	22.75	---	73.00	50.25	1000.0	9.000	N	19.9
23.130000	---	19.90	60.00	40.10	1000.0	9.000	N	20.2
23.130000	22.61	---	73.00	50.39	1000.0	9.000	N	20.2

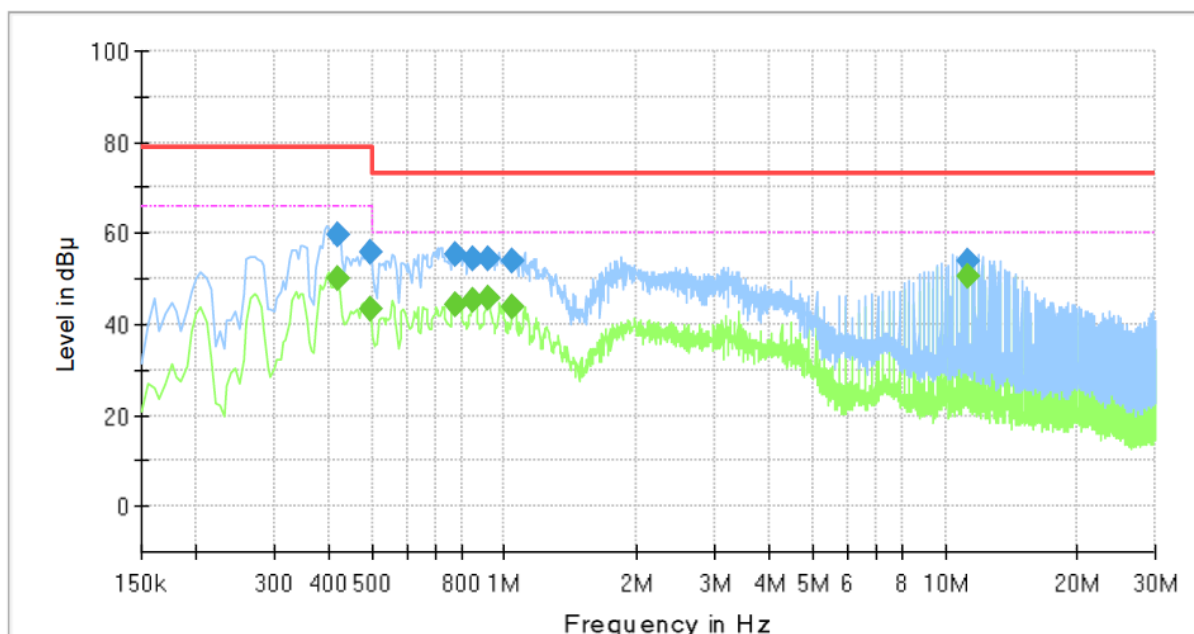
This report shall not be reproduced except in full, without the written approval of KES Co., Ltd.

The results shown in this test report refer only to the sample(s) tested unless otherwise stated.

The authenticity of the test report, contact kes@kes.co.kr

PoE Mode
HOT LINE
Common Information

Test Description:	Conducted Emission
Model No.:	QNO-7032R
Phase:	L1
Mode:	PoE
Operator Name:	KES


Final Result

Frequency (MHz)	QuasiPeak (dBμV)	CAverage (dBμV)	Limit (dBμV)	Margin (dB)	Meas. Time (ms)	Bandwidth (kHz)	Line	Corr. (dB)
0.420000	59.66	---	79.00	19.34	1000.0	9.000	L1	19.6
0.420000	---	50.16	66.00	15.84	1000.0	9.000	L1	19.6
0.495000	---	43.23	66.00	22.77	1000.0	9.000	L1	19.7
0.495000	55.92	---	79.00	23.08	1000.0	9.000	L1	19.7
0.775000	---	44.44	60.00	15.56	1000.0	9.000	L1	20.0
0.775000	55.16	---	73.00	17.84	1000.0	9.000	L1	20.0
0.845000	---	45.40	60.00	14.60	1000.0	9.000	L1	20.0
0.845000	54.54	---	73.00	18.46	1000.0	9.000	L1	20.0
0.915000	---	45.53	60.00	14.47	1000.0	9.000	L1	20.1
0.915000	54.21	---	73.00	18.79	1000.0	9.000	L1	20.1
1.040000	53.69	---	73.00	19.31	1000.0	9.000	L1	20.1
1.040000	---	43.85	60.00	16.15	1000.0	9.000	L1	20.1
11.280000	53.70	---	73.00	19.30	1000.0	9.000	L1	20.0
11.280000	---	50.55	60.00	9.45	1000.0	9.000	L1	20.0

This report shall not be reproduced except in full, without the written approval of KES Co., Ltd.

The results shown in this test report refer only to the sample(s) tested unless otherwise stated.

The authenticity of the test report, contact kes@kes.co.kr



KES Co., Ltd.

3701, 40, Simin-daero 365beon-gil,
Dongan-gu, Anyang-si, Gyeonggi-do, 14057, Korea
Tel: +82-31-425-6200 / Fax: +82-31-424-0450
www.kes.co.kr

Report No.:

KES-EM-21T0630-R1

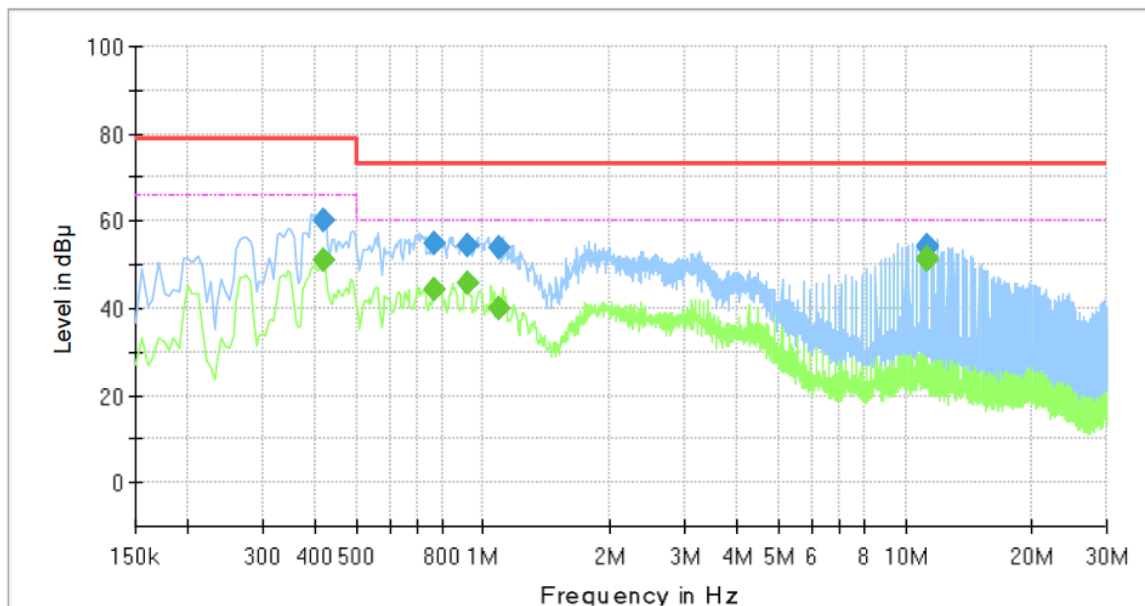
Page (19) of (39)

This report shall not be reproduced except in full, without the written approval of KES Co., Ltd.
The results shown in this test report refer only to the sample(s) tested unless otherwise stated.
The authenticity of the test report, contact kes@kes.co.kr

NEUTRAL LINE

Common Information

Test Description:	Conducted Emission
Model No.:	QNO-7032R
Phase:	N
Mode:	PoE
Operator Name:	KES



Final Result

Frequency (MHz)	QuasiPeak (dBμV)	CAverage (dBμV)	Limit (dBμV)	Margin (dB)	Meas. Time (ms)	Bandwidth (kHz)	Line	Corr. (dB)
0.420000	---	51.19	66.00	14.81	1000.0	9.000	N	19.6
0.420000	60.31	---	79.00	18.69	1000.0	9.000	N	19.6
0.765000	---	44.51	60.00	15.49	1000.0	9.000	N	20.0
0.765000	54.97	---	73.00	18.03	1000.0	9.000	N	20.0
0.915000	---	45.67	60.00	14.33	1000.0	9.000	N	20.1
0.915000	54.13	---	73.00	18.87	1000.0	9.000	N	20.1
1.095000	---	39.78	60.00	20.22	1000.0	9.000	N	20.1
1.095000	53.84	---	73.00	19.16	1000.0	9.000	N	20.1
11.275000	---	51.46	60.00	8.54	1000.0	9.000	N	19.9
11.275000	54.43	---	73.00	18.57	1000.0	9.000	N	19.9
11.280000	---	51.10	60.00	8.90	1000.0	9.000	N	19.9
11.280000	54.11	---	73.00	18.89	1000.0	9.000	N	19.9

◆ Calculation

QuasiPeak[dBuV] / CAverage [dBuV] = Reading Value[dBuV] + Corr. [dB]

QuasiPeak / CAverage : The Final Value

Reading Value : Not shown in the table.

Corr. : Correction values (LISN FACTOR + (Cable Loss + Pulse Limiter FACTOR))

This report shall not be reproduced except in full, without the written approval of KES Co., Ltd.

The results shown in this test report refer only to the sample(s) tested unless otherwise stated.

The authenticity of the test report, contact kes@kes.co.kr



KES Co., Ltd.

3701, 40, Simin-daero 365beon-gil,
Dongan-gu, Anyang-si, Gyeonggi-do, 14057, Korea
Tel: +82-31-425-6200 / Fax: +82-31-424-0450
www.kes.co.kr

Report No.:

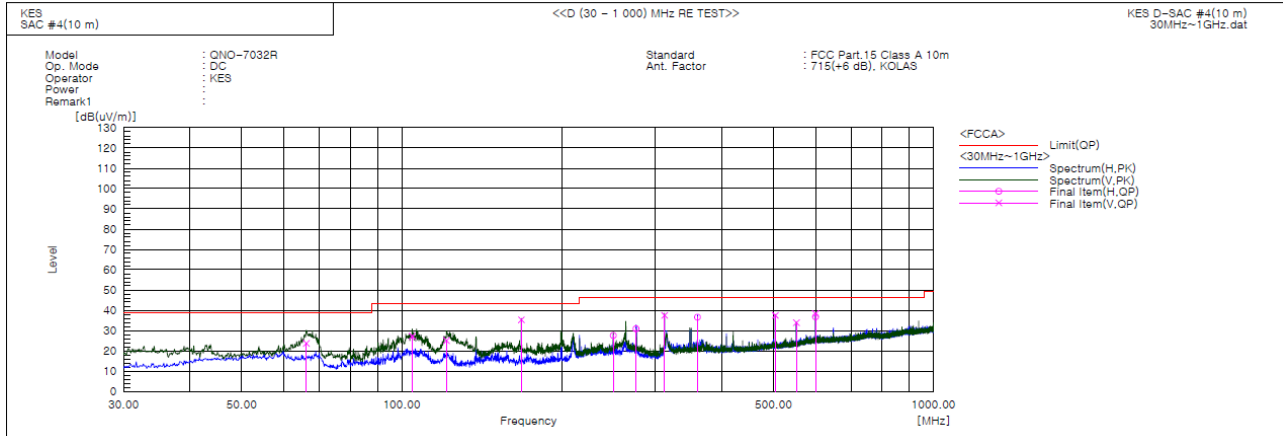
KES-EM-21T0630-R1

Page (21) of (39)

Radiated Electric Field Emissions(Below 1 GHz)

- 47 CFR Part 15, Subpart B

■ DC Mode



Final Result

No.	Frequency [MHz]	(P)	Reading QP [dB(uV)]	c.f [dB(1/m)]	Result QP [dB(uV/m)]	Limit QP [dB(uV/m)]	Margin QP [dB]	Height [cm]	Angle [deg]	Remark
1	66.133	V	47.3	-23.6	23.7	39.0	15.3	100.0	94.0	
2	104.690	V	49.6	-22.4	27.2	43.5	16.3	171.0	116.0	
3	121.423	V	49.5	-24.4	25.1	43.5	18.4	100.0	251.0	
4	167.861	V	59.5	-24.2	35.3	43.5	8.2	100.0	35.0	
5	249.948	H	46.7	-19.1	27.6	46.5	18.9	400.0	295.0	
6	275.774	H	49.5	-18.6	30.9	46.5	15.6	257.0	92.0	
7	311.906	V	54.7	-17.2	37.5	46.5	9.0	111.0	71.0	
8	359.921	H	51.7	-15.1	36.6	46.5	9.9	219.0	273.0	
9	503.845	V	49.0	-11.5	37.5	46.5	9.0	100.0	348.0	
10	551.860	V	44.2	-10.3	33.9	46.5	12.6	103.0	18.0	
11	599.875	H	45.3	-8.5	36.8	46.5	9.7	189.0	24.0	
12	599.875	V	46.8	-8.5	38.3	46.5	8.2	336.0	338.0	

This report shall not be reproduced except in full, without the written approval of KES Co., Ltd.

The results shown in this test report refer only to the sample(s) tested unless otherwise stated.

The authenticity of the test report, contact kes@kes.co.kr



KES Co., Ltd.

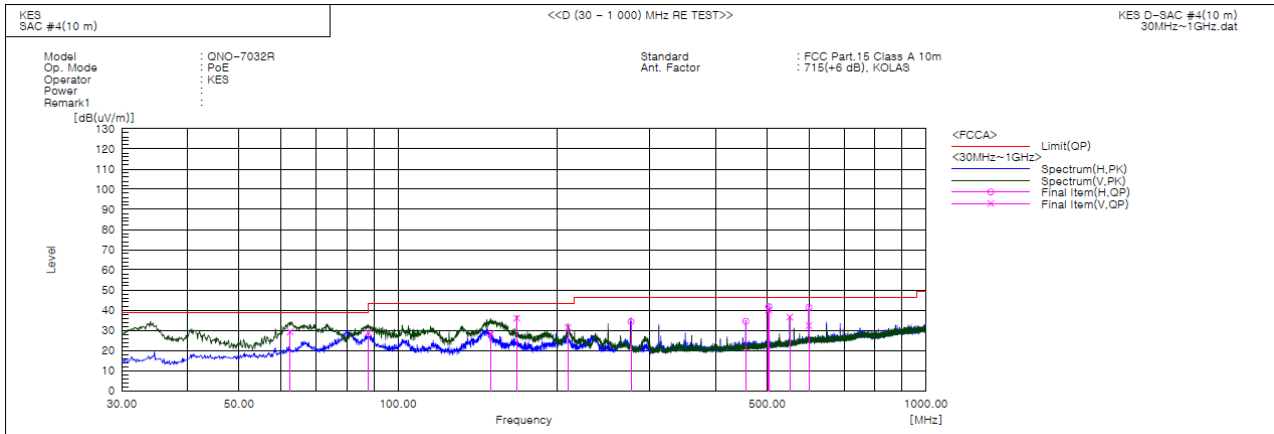
3701, 40, Simin-daero 365beon-gil,
Dongan-gu, Anyang-si, Gyeonggi-do, 14057, Korea
Tel: +82-31-425-6200 / Fax: +82-31-424-0450
www.kes.co.kr

Report No.:

KES-EM-21T0630-R1

Page (22) of (39)

PoE Mode



Final Result

No.	Frequency [MHz]	(P)	Reading QP [dB(uV)]	c.f [dB(1/m)]	Result QP [dB(uV/m)]	Limit QP [dB(uV/m)]	Margin QP [dB]	Height [cm]	Angle [deg]	Remark
1	62.495	V	51.8	-22.6	29.2	39.0	9.8	142.0	348.0	
2	87.836	V	53.7	-24.9	28.8	39.0	10.2	123.0	239.0	
3	149.916	V	53.4	-25.1	28.3	43.5	15.2	152.0	332.0	
4	167.861	V	60.2	-24.2	36.0	43.5	7.5	100.0	161.0	
5	209.814	V	51.9	-20.5	31.4	43.5	12.1	261.0	41.0	
6	276.138	H	52.9	-18.6	34.3	46.5	12.2	327.0	140.0	
7	455.830	H	47.5	-13.0	34.5	46.5	12.0	236.0	116.0	
8	502.979	V	51.8	-11.6	40.2	46.5	6.3	121.0	183.0	
9	503.845	H	53.2	-11.5	41.7	46.5	4.8	278.0	116.0	
10	551.860	V	46.9	-10.3	36.6	46.5	9.9	172.0	213.0	
11	599.772	V	40.9	-8.5	32.4	46.5	14.1	356.0	127.0	
12	599.875	H	49.9	-8.5	41.4	46.5	5.1	121.0	344.0	

This report shall not be reproduced except in full, without the written approval of KES Co., Ltd.

The results shown in this test report refer only to the sample(s) tested unless otherwise stated.

The authenticity of the test report, contact kes@kes.co.kr



KES Co., Ltd.

3701, 40, Simin-daero 365beon-gil,
Dongan-gu, Anyang-si, Gyeonggi-do, 14057, Korea
Tel: +82-31-425-6200 / Fax: +82-31-424-0450
www.kes.co.kr

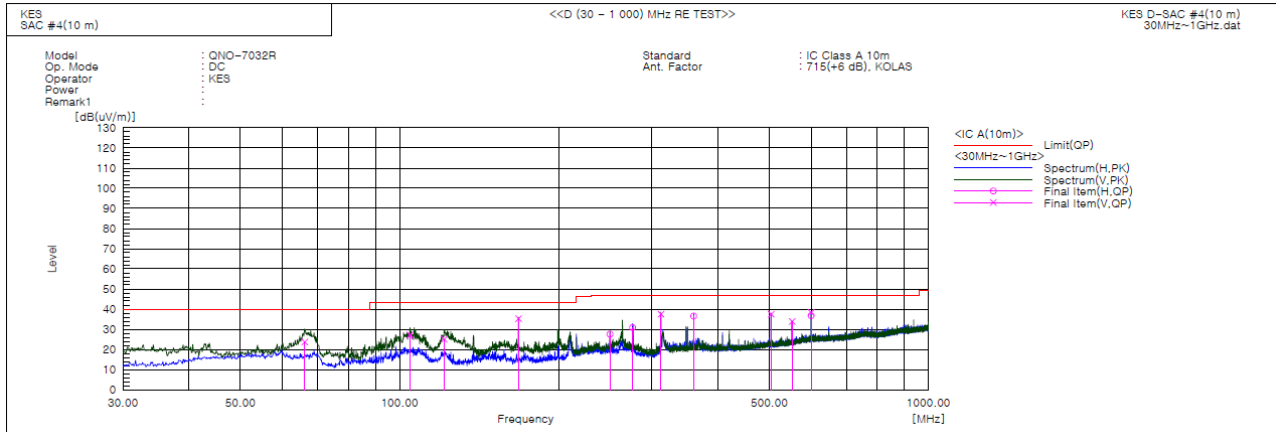
Report No.:

KES-EM-21T0630-R1

Page (23) of (39)

- IC Regulation ICES-003 Issue 7

■ DC Mode



Final Result

No.	Frequency [MHz]	(P)	Reading QP [dB(uV)]	c.f [dB(1/m)]	Result QP [dB(uV/m)]	Limit QP [dB(uV/m)]	Margin QP [dB]	Height [cm]	Angle [deg]	Remark
1	66.133	V	47.3	-23.6	23.7	40.0	16.3	100.0	94.0	
2	104.690	V	49.6	-22.4	27.2	43.5	16.3	171.0	116.0	
3	121.423	V	49.5	-24.4	25.1	43.5	18.4	100.0	251.0	
4	167.861	V	59.5	-24.2	35.3	43.5	8.2	100.0	35.0	
5	249.948	H	46.7	-19.1	27.6	47.0	19.4	400.0	295.0	
6	275.774	H	49.5	-18.6	30.9	47.0	16.1	257.0	92.0	
7	311.906	V	54.7	-17.2	37.5	47.0	9.5	111.0	71.0	
8	359.921	H	51.7	-15.1	36.6	47.0	10.4	219.0	273.0	
9	503.845	V	49.0	-11.5	37.5	47.0	9.5	100.0	348.0	
10	551.860	V	44.2	-10.3	33.9	47.0	13.1	103.0	18.0	
11	599.875	H	45.3	-8.5	36.8	47.0	10.2	189.0	24.0	
12	599.875	V	46.8	-8.5	38.3	47.0	8.7	336.0	338.0	

This report shall not be reproduced except in full, without the written approval of KES Co., Ltd.

The results shown in this test report refer only to the sample(s) tested unless otherwise stated.

The authenticity of the test report, contact kes@kes.co.kr



KES Co., Ltd.

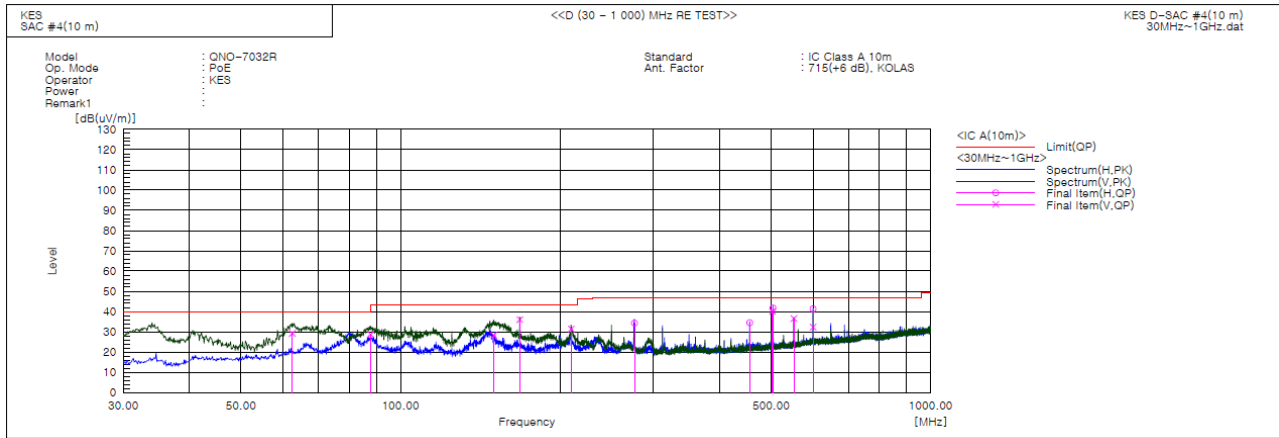
3701, 40, Simin-daero 365beon-gil,
Dongan-gu, Anyang-si, Gyeonggi-do, 14057, Korea
Tel: +82-31-425-6200 / Fax: +82-31-424-0450
www.kes.co.kr

Report No.:

KES-EM-21T0630-R1

Page (24) of (39)

■ PoE Mode



Final Result

No.	Frequency [MHz]	(P)	Reading QP [dB(uV)]	c.f [dB(1/m)]	Result QP [dB(uV/m)]	Limit QP [dB(uV/m)]	Margin QP [dB]	Height [cm]	Angle [deg]	Remark
1	62.495	V	51.8	-22.6	29.2	40.0	10.8	142.0	348.0	
2	87.836	V	53.7	-24.9	28.8	40.0	11.2	123.0	239.0	
3	149.916	V	53.4	-25.1	28.3	43.5	15.2	152.0	332.0	
4	167.861	V	60.2	-24.2	36.0	43.5	7.5	100.0	161.0	
5	209.814	V	51.9	-20.5	31.4	43.5	12.1	261.0	41.0	
6	276.138	H	52.9	-18.6	34.3	47.0	12.7	327.0	140.0	
7	455.830	H	47.5	-13.0	34.5	47.0	12.5	236.0	116.0	
8	502.979	V	51.8	-11.6	40.2	47.0	6.8	121.0	183.0	
9	503.845	H	53.2	-11.5	41.7	47.0	5.3	278.0	116.0	
10	551.860	V	46.9	-10.3	36.6	47.0	10.4	172.0	213.0	
11	599.772	V	40.9	-8.5	32.4	47.0	14.6	356.0	127.0	
12	599.875	H	49.9	-8.5	41.4	47.0	5.6	121.0	344.0	

◆ Calculation - SAC #4(10 m)

Result(QP) [dB(μ V/m)] = (Reading(QP)[dB(μ V)] + c.f[dB(1/m)])

Margin(QP)[dB] = Limit[dB(μ V/m)] - Result(QP) [dB(μ V/m)]

Reading(QP) : Reading value, Result(QP) : Reading value + Factor value

Limit(QP) : Limit value, c.f : (ANT Factor + Cable Loss - Preamp Factor), Margin: Margin value

This report shall not be reproduced except in full, without the written approval of KES Co., Ltd.

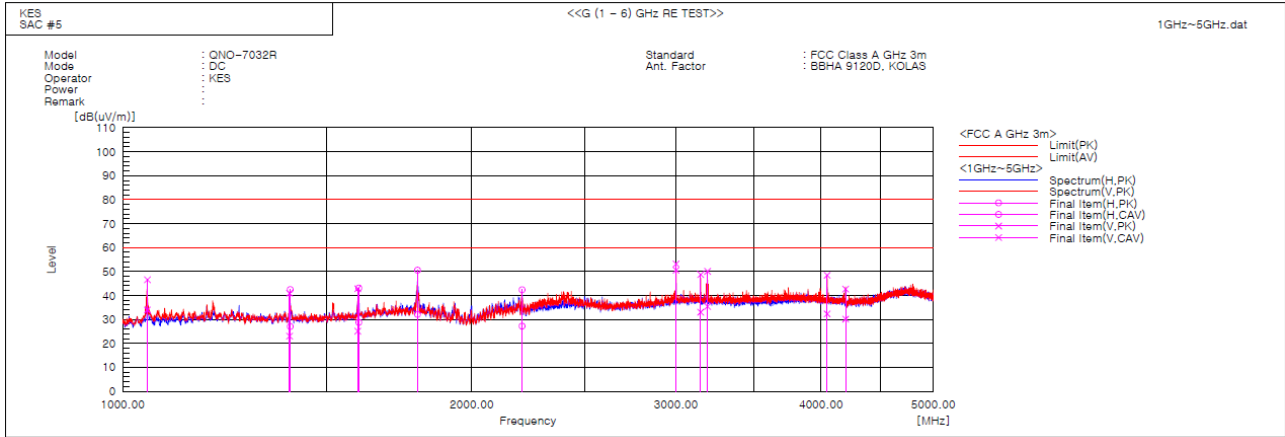
The results shown in this test report refer only to the sample(s) tested unless otherwise stated.

The authenticity of the test report, contact kes@kes.co.kr



Radiated Electric Field Emissions(Above 1 GHz)

■ DC Mode



Final Result

No.	Frequency [MHz]	(P)	Reading PK [dB(uV)]	Reading CAV [dB(uV)]	c.f [dB(1/m)]	Result PK [dB(uV/m)]	Result CAV [dB(uV/m)]	Limit PK [dB(uV/m)]	Limit AV [dB(uV/m)]	Margin PK [dB]	Margin CAV [dB]	Height [cm]	Angle [deg]	Remark
1	1050.000	V	54.6	42.0	-8.0	46.6	34.0	80.0	60.0	33.4	26.0	251.0	224.5	
2	1392.500	V	47.0	29.2	-6.1	40.9	23.1	80.0	60.0	39.1	36.9	100.0	62.8	
3	1394.375	H	48.6	33.2	-6.1	42.5	27.1	80.0	60.0	37.5	32.9	400.0	112.9	
4	1594.375	V	48.3	30.5	-5.4	42.9	25.1	80.0	60.0	37.1	34.9	259.0	51.6	
5	1598.125	H	48.5	34.2	-5.4	43.1	28.8	80.0	60.0	36.9	31.2	356.0	33.3	
6	1795.625	H	55.1	36.6	-4.5	50.6	32.1	80.0	60.0	29.4	27.9	109.0	28.2	
7	2210.000	H	45.7	30.5	-3.3	42.4	27.2	80.0	60.0	37.6	32.8	211.0	268.4	
8	3000.000	V	53.7	51.1	-0.5	53.2	50.6	80.0	60.0	26.8	9.4	267.0	143.0	
9	3150.000	V	49.0	33.3	-0.2	48.8	33.1	80.0	60.0	31.2	26.9	100.0	130.7	
10	3193.125	V	50.3	35.7	-0.2	50.1	35.5	80.0	60.0	29.9	24.5	119.0	214.1	
11	4050.000	V	46.8	30.7	1.7	48.5	32.4	80.0	60.0	31.5	27.6	400.0	233.4	
12	4200.000	V	40.4	27.9	2.3	42.7	30.2	80.0	60.0	37.3	29.8	393.0	222.1	



KES Co., Ltd.

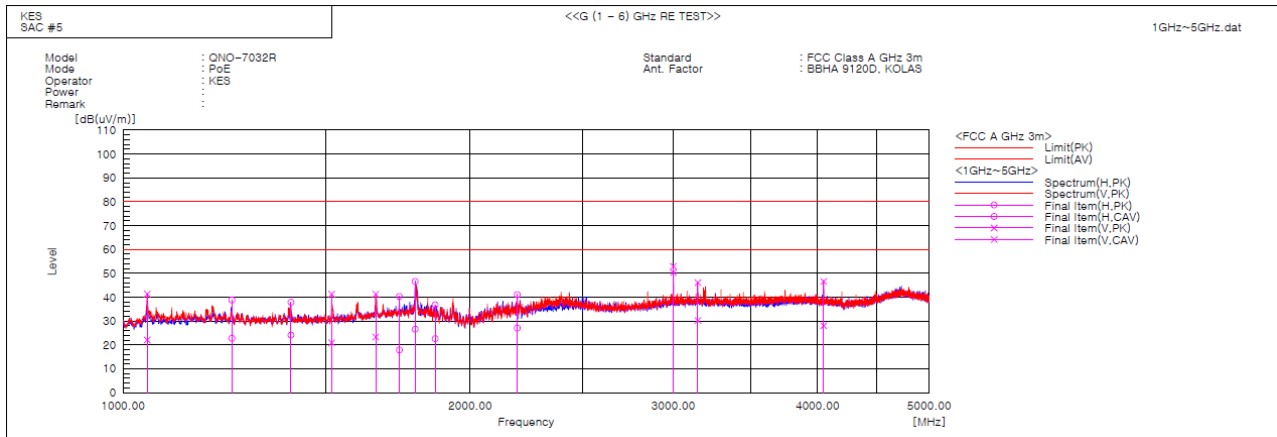
3701, 40, Simin-daero 365beon-gil,
Dongan-gu, Anyang-si, Gyeonggi-do, 14057, Korea
Tel: +82-31-425-6200 / Fax: +82-31-424-0450
www.kes.co.kr

Report No.:

KES-EM-21T0630-R1

Page (26) of (39)

PoE Mode



Final Result

No.	Frequency [MHz]	(P)	Reading PK [dB(uV)]	Reading CAV [dB(uV)]	c.f [dB(1/m)]	Result PK [dB(uV/m)]	Result CAV [dB(uV/m)]	Limit PK [dB(uV/m)]	Limit AV [dB(uV/m)]	Margin PK [dB]	Margin CAV [dB]	Height [cm]	Angle [deg]	Remark
1	1049.375	V	49.4	30.1	-8.0	41.4	22.1	80.0	60.0	38.6	37.9	100.0	214.3	
2	1242.500	H	45.7	29.7	-6.9	38.8	22.8	80.0	60.0	41.2	37.2	387.0	141.2	
3	1398.125	H	44.0	30.2	-6.1	37.9	24.1	80.0	60.0	42.1	35.9	354.0	59.8	
4	1516.250	V	46.9	26.5	-5.6	41.3	20.9	80.0	60.0	38.7	39.1	189.0	163.3	
5	1655.625	V	46.4	28.4	-5.1	41.3	23.3	80.0	60.0	38.7	36.7	351.0	98.8	
6	1736.250	H	45.1	22.7	-4.8	40.3	17.9	80.0	60.0	39.7	42.1	121.0	42.4	
7	1791.250	H	51.1	31.1	-4.5	46.6	26.6	80.0	60.0	33.4	33.4	268.0	48.6	
8	1864.375	H	41.0	26.8	-4.2	36.8	22.6	80.0	60.0	43.2	37.4	391.0	42.4	
9	2196.875	H	44.5	30.5	-3.4	41.1	27.1	80.0	60.0	38.9	32.9	400.0	90.4	
10	3000.000	V	53.5	50.8	-0.5	53.0	50.3	80.0	60.0	27.0	9.7	103.0	137.8	
11	3150.000	V	46.3	30.5	-0.2	46.1	30.3	80.0	60.0	33.9	29.7	100.0	93.7	
12	4050.000	V	44.9	26.4	1.7	46.6	28.1	80.0	60.0	33.4	31.9	142.0	233.8	

◆ Calculation

Result(PK/CAV) [dB(μV/m)] = (Reading(PK/CAV)[dB(μV)] + c.f[dB(1/m)])

Margin(PK/CAV)[dB] = Limit[dB(μV/m)] - Result(PK/CAV) [dB(μV/m)]

Reading(PK/CAV) : Reading value, Result(PK/CAV) : Reading value + Factor value

Limit(QP) : Limit value, c.f : (ANT Factor + Cable Loss - Preamp Factor), Margin: Margin value

This report shall not be reproduced except in full, without the written approval of KES Co., Ltd.

The results shown in this test report refer only to the sample(s) tested unless otherwise stated.

The authenticity of the test report, contact kes@kes.co.kr

Test Setup Photos and Configuration

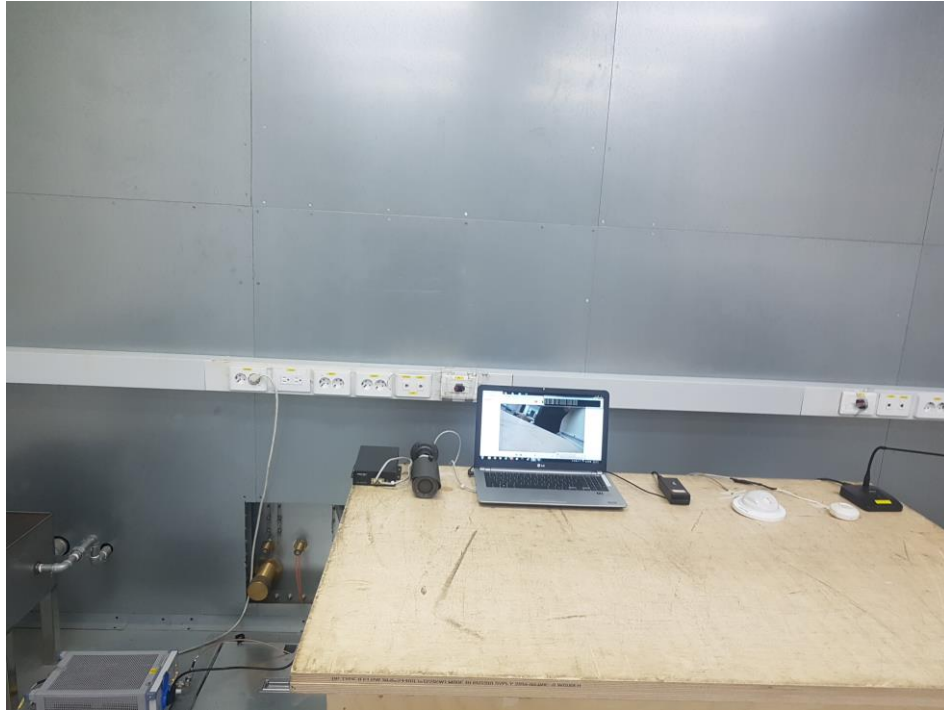
Conducted Emissions at Mains Power Ports

■ DC Mode



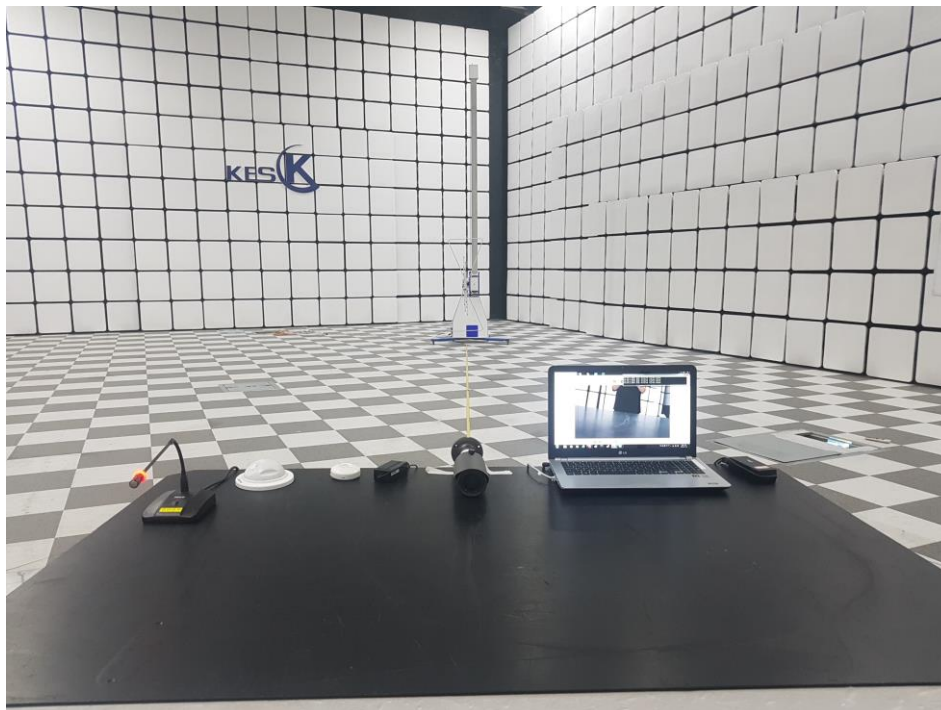
This report shall not be reproduced except in full, without the written approval of KES Co., Ltd.
The results shown in this test report refer only to the sample(s) tested unless otherwise stated.
The authenticity of the test report, contact kes@kes.co.kr

■ PoE Mode

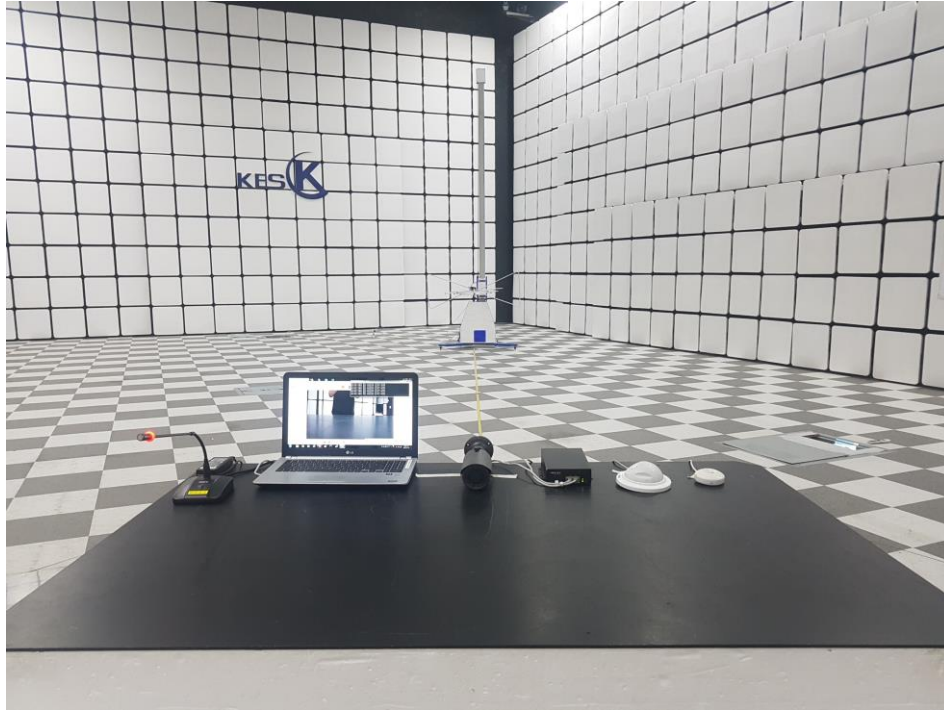


Radiated Electric Field Emissions(Below 1 GHz)

■ DC Mode



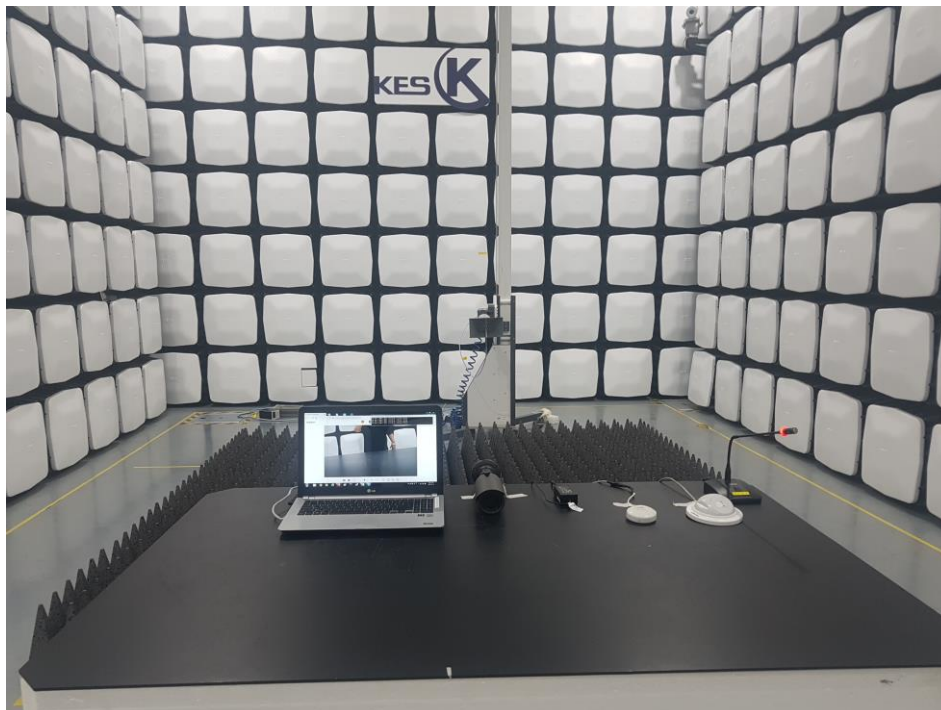
This report shall not be reproduced except in full, without the written approval of KES Co., Ltd.
The results shown in this test report refer only to the sample(s) tested unless otherwise stated.
The authenticity of the test report, contact kes@kes.co.kr

■ PoE Mode

This report shall not be reproduced except in full, without the written approval of KES Co., Ltd.
The results shown in this test report refer only to the sample(s) tested unless otherwise stated.
The authenticity of the test report, contact kes@kes.co.kr

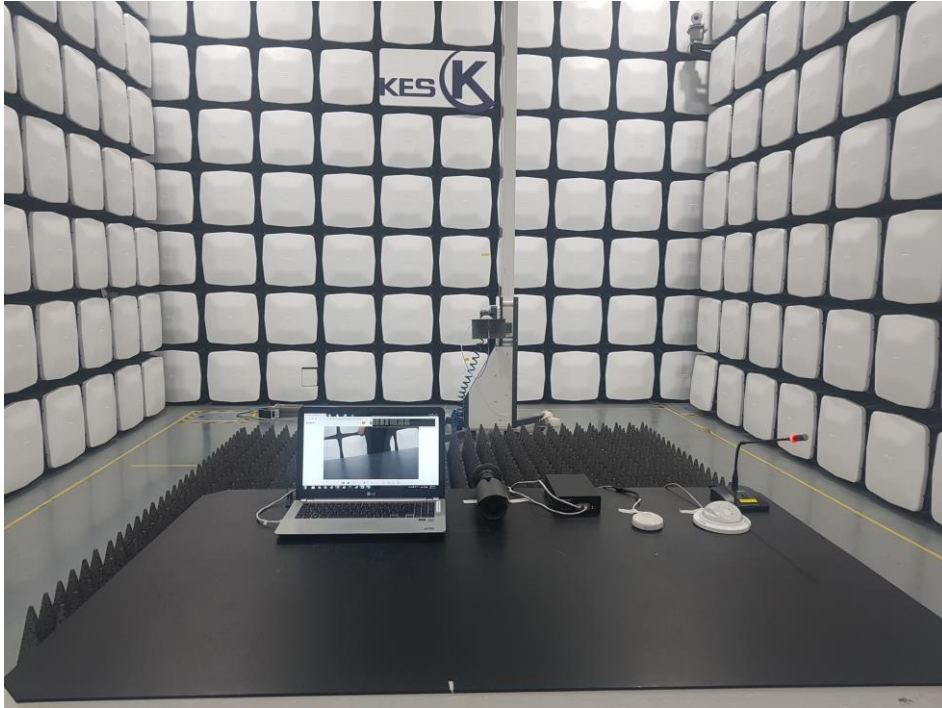
Radiated Electric Field Emissions(Above 1 GHz)

■ DC Mode



This report shall not be reproduced except in full, without the written approval of KES Co., Ltd.
The results shown in this test report refer only to the sample(s) tested unless otherwise stated.
The authenticity of the test report, contact kes@kes.co.kr

■ PoE Mode



This report shall not be reproduced except in full, without the written approval of KES Co., Ltd.
The results shown in this test report refer only to the sample(s) tested unless otherwise stated.
The authenticity of the test report, contact kes@kes.co.kr

EUT External Photographs

(Top)



(Bottom)



This report shall not be reproduced except in full, without the written approval of KES Co., Ltd.
The results shown in this test report refer only to the sample(s) tested unless otherwise stated.
The authenticity of the test report, contact kes@kes.co.kr

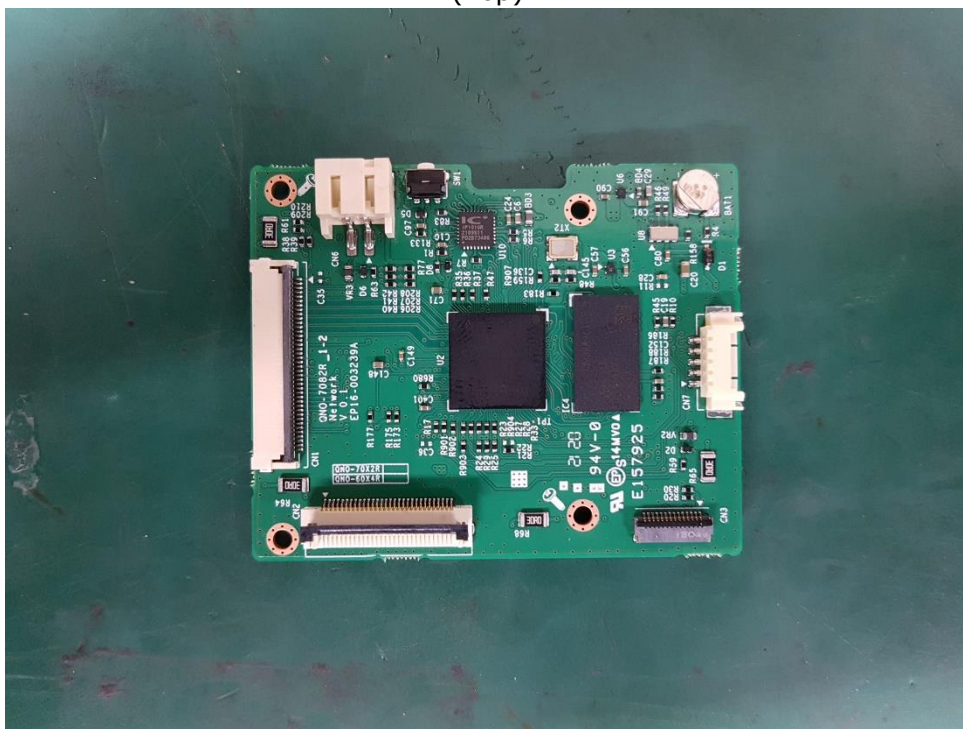
EUT Internal Photographs

(Internal View)



EUT Internal View – Board 1

(Top)



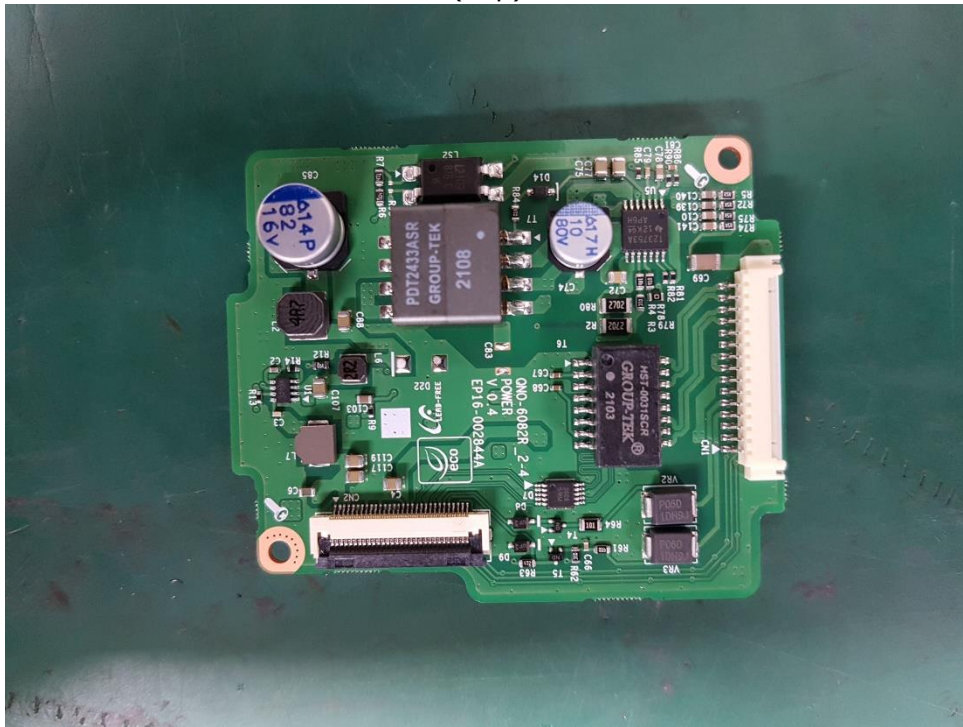
(Bottom)



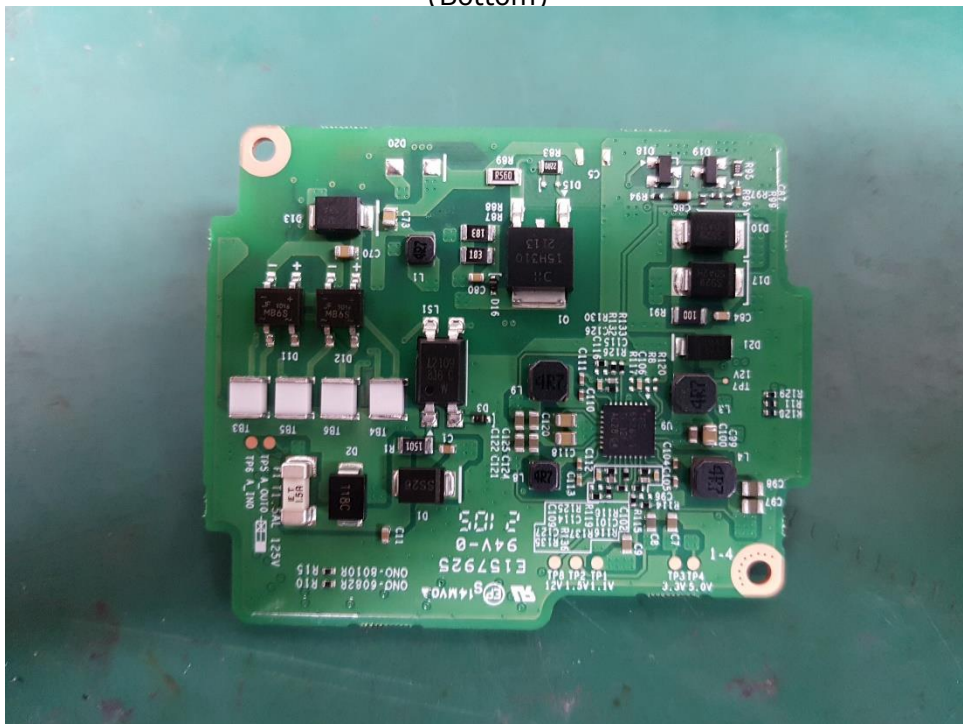
This report shall not be reproduced except in full, without the written approval of KES Co., Ltd.
The results shown in this test report refer only to the sample(s) tested unless otherwise stated.
The authenticity of the test report, contact kes@kes.co.kr

EUT Internal View – Board 2

(Top)



(Bottom)



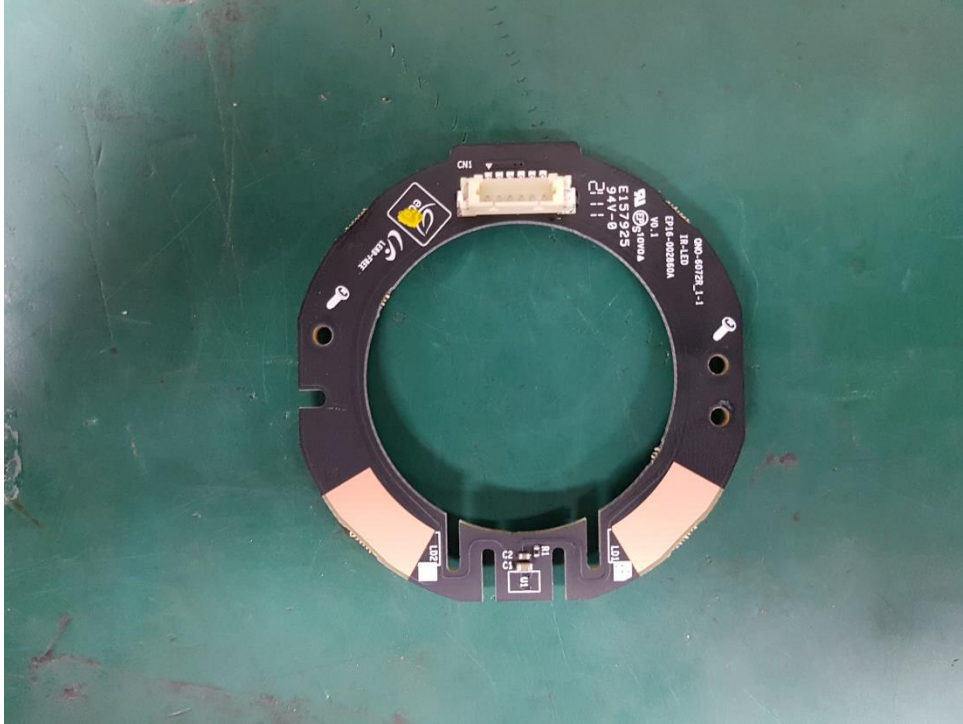
This report shall not be reproduced except in full, without the written approval of KES Co., Ltd.

The results shown in this test report refer only to the sample(s) tested unless otherwise stated.

The authenticity of the test report, contact kes@kes.co.kr

EUT Internal View – Board 3

(Top)



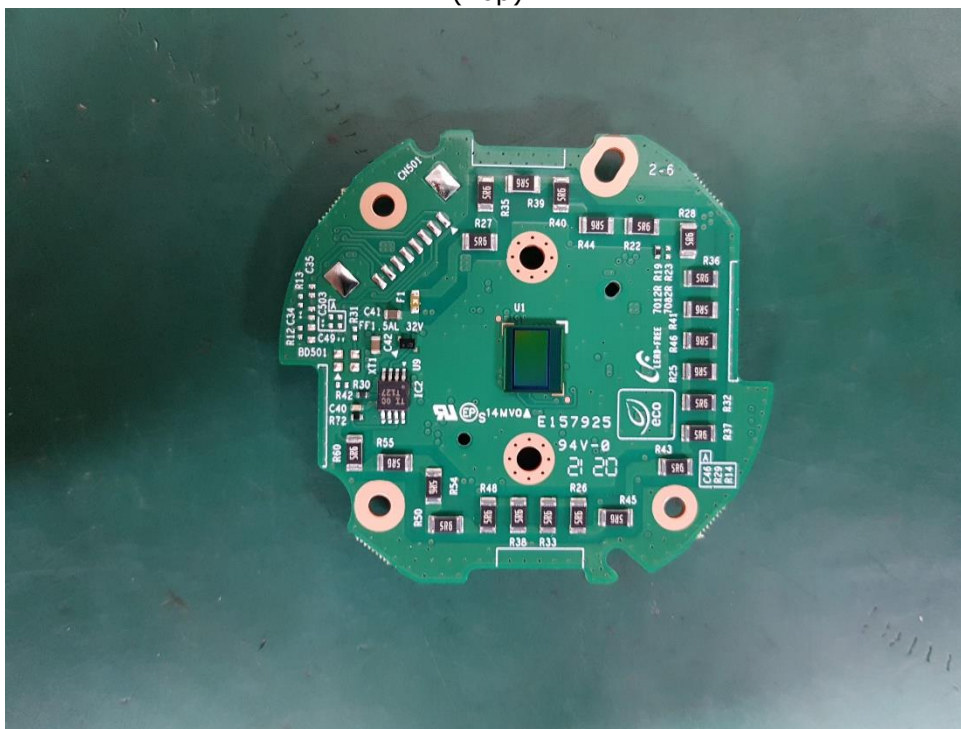
(Bottom)



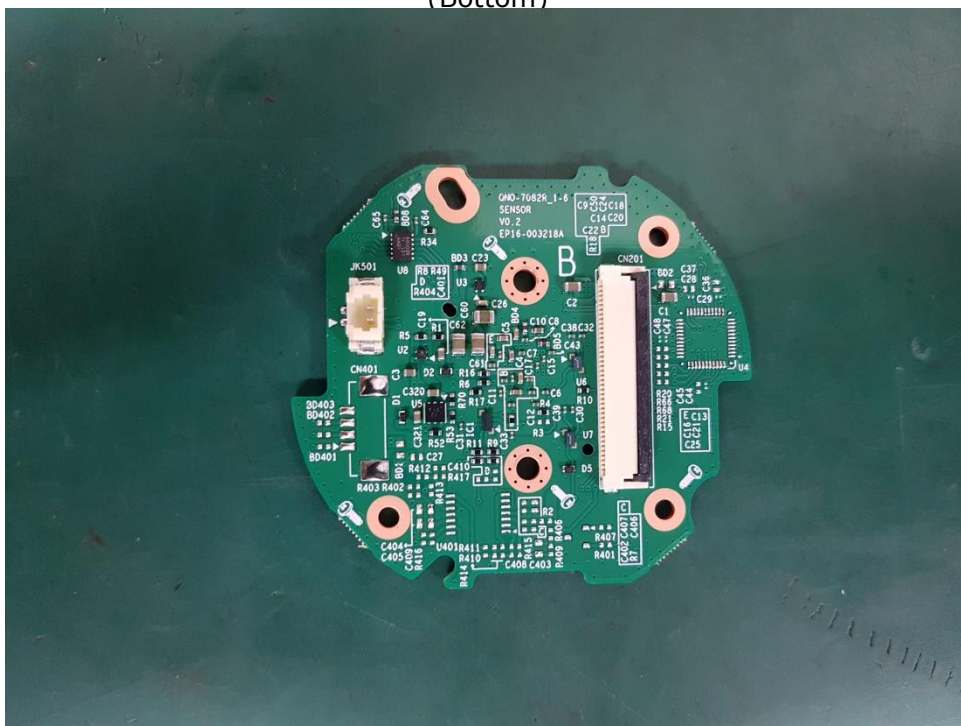
This report shall not be reproduced except in full, without the written approval of KES Co., Ltd.
The results shown in this test report refer only to the sample(s) tested unless otherwise stated.
The authenticity of the test report, contact kes@kes.co.kr

EUT Internal View – Board 4

(Top)



(Bottom)



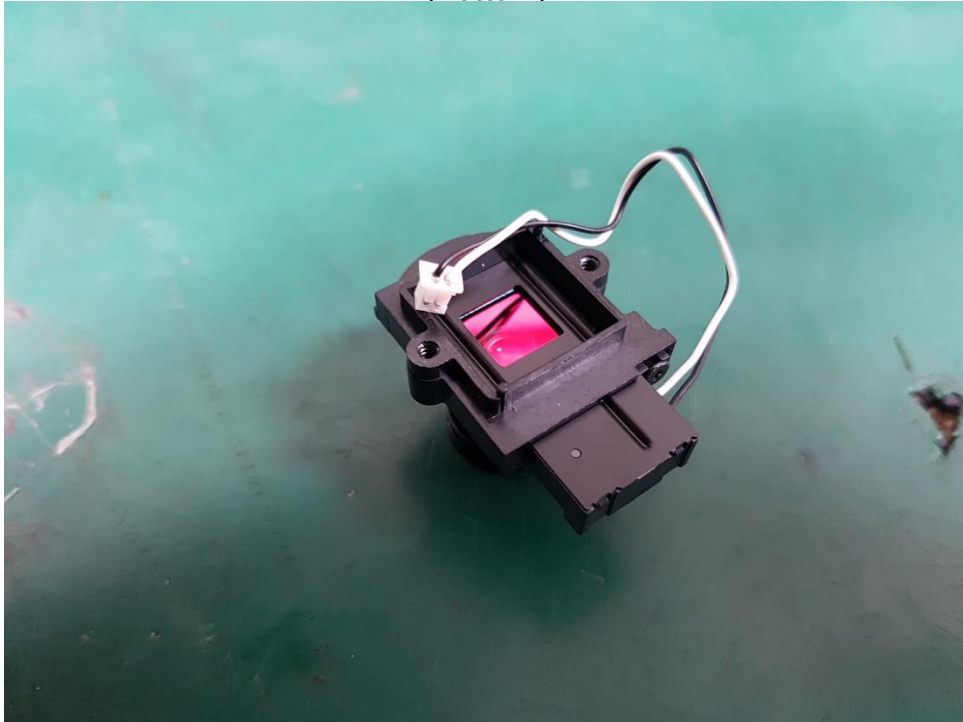
This report shall not be reproduced except in full, without the written approval of KES Co., Ltd.
The results shown in this test report refer only to the sample(s) tested unless otherwise stated.
The authenticity of the test report, contact kes@kes.co.kr

EUT Internal View – Lens

(Top)



(Bottom)



This report shall not be reproduced except in full, without the written approval of KES Co., Ltd.
The results shown in this test report refer only to the sample(s) tested unless otherwise stated.
The authenticity of the test report, contact kes@kes.co.kr

Label Photographs



CAN ICES-3(A) / NMB-3(A)

This device complies with part 15 of the FCC Rules. Operation is subject to the following two conditions: (1) This device may not cause harmful interference, and (2) this device must accept any interference received, including interference that may cause undesired operation

This device complies with Industry Canada license-exempt RSS standard(s). Operation is subject to the following two conditions: (1) this device may not cause interference, and (2) this device must accept any interference, including interference that may cause undesired operation of the device.

Le présent appareil est conforme aux CNR d'Industrie Canada applicables aux appareils radio exempts de licence. L'exploitation est autorisée aux deux conditions suivantes :

(1) l'appareil ne doit pas produire de brouillage, et (2) l'utilisateur de l'appareil doit accepter tout brouillage radioélectrique subi, même si le brouillage est susceptible d'en compromettre le fonctionnement.