



## EMC TEST REPORT For VCCI

Test Report No. : KES-EM-23T0112  
Date of Issue : Feb. 14, 2023  
Product name : NETWORK CAMERA  
Model/Type No. : QNO-C8083R  
Variant Model : -  
Applicant : Hanwha Vision Co., Ltd  
Applicant Address : 6, Pangyo-ro 319Beon-gil, Bundang-gu, Seongnam-si,  
Gyeonggi-do, Republic of Korea  
Manufacturer : 1. HANWHA VISION VIETNAM COMPANY LIMITED  
2. D-TECH CO.,LTD.  
Manufacturer Address : 1. Lot O-2, Que Vo Industrial Zone extended area,  
Nam Son commune, Bac Ninh city, Bac Ninh province, Vietnam  
2. 173-25, Saneop-ro, Gwonseon-gu, Suwon-si, Gyeonggi- do,  
Korea (Suwon Industrial Complex)  
Date of Receipt : Jan. 17, 2023  
Test date : Jan. 27, 2023 ~ Jan. 30, 2023  
Test Results : ☒ **In Compliance** ☐ **Not in Compliance**

Tested by

Jae Won, Lee  
EMC Test Engineer

Reviewed by

Dong-Hun, Jang  
EMC Technical Manager

This test report is not related to KS Q ISO/IEC 17025 and KOLAS.



# KES Co., Ltd.

3701, 40, Simin-daero 365beon-gil,  
Dongan-gu, Anyang-si, Gyeonggi-do, 14057, Korea  
Tel: +82-31-425-6200 / Fax: +82-31-424-0450  
www.kes.co.kr

Report No.:  
KES-EM-23T0112  
Page (2) of (32)

## REPORT REVISION HISTORY

Date	Test Report No.	Revision History
Feb. 14, 2023	KES-EM-23T0112	Issued

***This report shall not be reproduced except in full, without the written approval of KES Co., Ltd. This document may be altered or revised by KES Co., Ltd. personnel only, and shall be noted in the revision section of the document. Any alteration of this document not carried out by KES Co., Ltd. will constitute fraud and shall nullify the document.***

This report shall not be reproduced except in full, without the written approval of KES Co., Ltd.  
The results shown in this test report refer only to the sample(s) tested unless otherwise stated.  
The authenticity of the test report, contact kes@kes.co.kr



## TABLE OF CONTENTS

1.0	General Product Description.....	4
1.1	Test Voltage & Frequency .....	7
1.2	Variant Model Differences .....	7
1.3	Device Modifications .....	7
1.4	Equipment Under Test.....	7
1.5	Support Equipments .....	7
1.6	External I/O Cabling .....	8
1.7	EUT Operating Mode(s) .....	8
1.8	Configuration.....	9
1.9	Remarks when standards applied .....	10
1.10	Calibration Details of Equipment Used for Measurement .....	10
1.11	Test Facility .....	10
1.12	Laboratory Accreditations and Listings .....	10
2.0	Test Regulations.....	11
2.1	Conducted Emissions Mains Power Ports.....	12
2.2	Conducted Emissions at Telecommunication Ports.....	13
2.3	Radiated Electric Field Emissions(Below 1 GHz) .....	14
2.4	Radiated Electric Field Emissions(Above 1 GHz) .....	15
APPENDIX A – TEST DATA.....		16
Conducted Emissions at Mains Power Ports.....		16
Conducted Emissions at Telecommunication Ports .....		18
Radiated Electric Field Emissions(Below 1 GHz) .....		19
Radiated Electric Field Emissions(Above 1 GHz).....		20
Test Setup Photos and Configuration .....		21
Conducted Emissions at Mains Power Ports.....		21
Conducted Emissions at Telecommunication Ports .....		22
Radiated Electric Field Emissions(Below 1 GHz) .....		23
Radiated Electric Field Emissions(Above 1 GHz).....		24
EUT External Photographs .....		25
EUT Internal Photographs .....		26



## KES Co., Ltd.

3701, 40, Simin-daero 365beon-gil,  
Dongan-gu, Anyang-si, Gyeonggi-do, 14057, Korea  
Tel: +82-31-425-6200 / Fax: +82-31-424-0450  
www.kes.co.kr

Report No.:  
KES-EM-23T0112  
Page (4) of (32)

## 1.0 General Product Description

### Main Specifications of EUT are:

	QNO-C8083R
<b>Video</b>	
Imaging Device	1/2.8" CMOS
Resolution	2592x1944, 2560x1440, 1920x1080, 1280x960, 1280x720, 800x600, 800x448, 720x576, 720x480, 640x480, 640x360, 320x240
Max. Framerate	H.265/H.264: Max. 30fps/25fps(60Hz/50Hz) MJPEG: Max. 5fps
NETD	None
Pixel Size	None
Min. Illumination	Color: 0.15Lux(F1.6, 1/30sec) BW: 0.015Lux(F1.6, 1/30sec, 30IRE), 0Lux(IR LED on)
Video Out	USB: Micro USB Type B, 1280x720 for installation
Video Transmission Distance	None
<b>Lens</b>	
Focal Length (Zoom Ratio)	3.2~10.2mm(3.1x) motorized varifocal
Max. Aperture Ratio	F1.6(Wide)~F3.1(Tele)
Angular Field of View	H: 101°(Wide)~31°(Tele) V: 73°(Wide)~23°(Tele) D: 134°(Wide)~38°(Tele)
Min. Object Distance	1.2m (3.93ft)
Focus Control	Simple focus
Lens Type	DC auto iris(IR corrected)
Mount Type	None
Optional Lens	None
<b>Pan / Tilt / Rotate</b>	
Pan / Tilt / Rotate Range	None
Pan Range	None
Pan Speed	None
Tilt Range	None
Tilt Speed	None
Rotate Range	None
Sequence	None
Preset Accuracy	None
<b>Operational</b>	
Camera Title	Displayed up to 85 characters
Direction Indicator	None
Day & Night	Auto(ICR)
Backlight Compensation	BLC, WDR, SSDR
Wide Dynamic Range	120dB
Digital Noise Reduction	SSNRV, WiseNRⅡ(Based on AI engine)
Digital Image Stabilization	None
Defog	None
Motion Detection	8ea, 8point Polygonal zones
Privacy Masking	32ea, rectangular zones
Gain Control	Low / Middle / High
White Balance	ATW / AWC / Manual / Indoor / Outdoor
LDC	Support
Electronic Shutter Speed	Minimum / Maximum / Anti flicker (1/5~1/12,000sec)
Digital PTZ	Support
Video Rotation	Flip, Mirror, Halfway view(90°/270°)
Analytics	Classified object type: Person/Vehicle Attributes: Vehicle(Type:car/bus/truck/motorcycle/bicycle) Support DetectionShot <b>Analytics events based on AI engine</b> - Motion detection*, Object detection, Virtual line*(Crossing/Direction), Virtual area*(Loitering/Intrusion/Enter/Exit) <b>Analytics events</b> - Defocus detection, Tampering, Virtual area(Appear/Disappear)  * Some of the video analytics only works with people and vehicle detection
Business Intelligence	None
Serial Interface	None
Alarm I/O	Input 1ea / Output 1ea
Alarm Triggers	Analytics, Network disconnect, Alarm input

This report shall not be reproduced except in full, without the written approval of KES Co., Ltd.  
The results shown in this test report refer only to the sample(s) tested unless otherwise stated.  
The authenticity of the test report, contact kes@kes.co.kr



## KES Co., Ltd.

3701, 40, Simin-daero 365beon-gil,  
Dongan-gu, Anyang-si, Gyeonggi-do, 14057, Korea  
Tel: +82-31-425-6200 / Fax: +82-31-424-0450  
www.kes.co.kr

Report No.:  
KES-EM-23T0112  
Page (5) of (32)

Alarm Events	When alarm trigger occurred - File upload(image) : e-mail/FTP - Notification : e-mail - Recording : SD/SDHC/SDXC or NAS recording at event triggers - Alarm output - Handover(PTZ preset, Send message by HTTP/HTTPS/TCP) - Audio clip playback (TBD)
Audio Streaming	None
Audio In	Selectable(mic in/line in) Supply voltage: 2.5VDC(4mA), Input impedance: 25K Ohm
Audio Out	Line out, Max.output level: 0.5Vrms
IR Viewable Length	30m(98.42ft)
IR Illuminator (Optional)	None
IR Radiation angle	None
IR LED	2ea
IR Wavelength	long-life 850 nm IR LED
IR Operation	None
Water Removal	None
Auto Tracking	None
Coaxial Protocol	None
Color Palettes	None
<b>Radiometry</b>	
Temperature Detect Range	None
Temperature Accuracy	None
Temperature Detection	None
Additional	None
<b>Network</b>	
Ethernet	RJ-45 (10/100BASE-T)
Video Compression	H.265/H.264: Main/High, MJPEG
Audio Compression	G.711 u-law /G.726 Selectable G.726(ADPCM) 8KHz, G.711 8KHz G.726: 16Kbps, 24Kbps, 32Kbps, 40Kbps AAC-LC: 48Kbps at 16KHz
Smart Codec	Manual(Sea area), WiseStreamII

This report shall not be reproduced except in full, without the written approval of KES Co., Ltd.  
The results shown in this test report refer only to the sample(s) tested unless otherwise stated.  
The authenticity of the test report, contact kes@kes.co.kr



## KES Co., Ltd.

3701, 40, Simin-daero 365beon-gil,  
Dongan-gu, Anyang-si, Gyeonggi-do, 14057, Korea  
Tel: +82-31-425-6200 / Fax: +82-31-424-0450  
www.kes.co.kr

Report No.:  
KES-EM-23T0112  
Page (6) of (32)

Video Quality Adjustment	H.264/H.265: Target bitrate level control MJPEG: Quality Level control
Bitrate Control	H.264/H.265: CBR or VBR MJPEG: VBR
Streaming	Unicast(6 users) / Multicast Multiple streaming(Up to 5 profiles)
Protocol	IPv4, IPv6, TCP/IP, UDP/IP, RTP(UDP), RTP(TCP), RTCP,RTSP, NTP, HTTP, HTTPS, SSL/TLS, DHCP, FTP, SMTP, ICMP, IGMP, SNMPv1/v2c/v3(MIB-2), ARP, DNS, DDNS, QoS, UPnP, Bonjour, LLDP, SRTP (TCP, UDP Unicast)
SIP support (VoIP, Peer-to-peer, SIP/PBX)	None
Security	HTTPS(SSL) Login Authentication Digest Login Authentication IP Address Filtering User access log 802.1X Authentication(EAP-TLS, EAP-LEAP) Device Certificate(Hanwha Techwin Root CA, pre-installed) Secure boot
Application Programming Interface	ONVIF Profile S/G/T/M SUNAPI(HTTP API)
<b>General</b>	
Webpage Language	English, Korean, Chinese, French, Italian, Spanish, German, Japanese, Russian, Portuguese, Czech, Polish, Turkish, Dutch, Hungarian, Greek
Web Viewer	None
Edge Storage	Micro SD/SDHC/SDXC 1slot 256GB (TBD)
Memory	2GB RAM, 1GB Flash
<b>Environmental &amp; Electrical</b>	
Operating Temperature / Humidity	-30°C~+55°C(-22°F ~ +131°F) / 0~95% RH * Start up should be done at above -30°C
Storage Temperature / Humidity	-50°C ~ +60°C(-58°F ~ +140°F) / Less than 95% RH
Certification	IP66, IK10
Input Voltage	PoE(IEEE802.3af, Class3)
Power Consumption	PoE: Max 12W, typical 5.3W
<b>Mechanical</b>	
Color / Material	White / Aluminum
RAL Code	RAL9003
Product Dimensions / Weight	ø92.0x251.0mm(ø3.62x9.88"), 00g(0.00 lb) (TBD)
<b>Certifications &amp; Standards</b>	
Network	None
EMC	FCC 47 CFR 15 Subpart B Class A ICES-3(A)/NMB-3(A) CE/UKCA - EN 55032 Class A, EN 50130-4, EN 61000-3-2, EN 61000-3-3 VCCI CISPR 32 Class A RCM AS/NZS CISPR 32 Class A
Safety	UL 62368-1, CAN/CSA C22.2 NO. 62368-1 IEC/EN 62471
Environment	IEC/EN 63000 IEC/EN 60529 IP66, IEC/EN 62262 IK10
Video	None
<b>DORI (EN62676-4 standard)</b>	
Detect (25PPM/ 8PPF)	Wide: 42.7m(140.20ft) / Tele: 186.9m(613.28ft)
Observe (63PPM/ 19PPF)	Wide: 17.2m(56.08ft) / Tele: 75.4m(245.31ft)
Recognize (125PPM/ 38PPF)	Wide: 8.5m(28.04ft) / Tele: 37.4m(122.66ft)
Identify (250PPM/ 76PPF)	Wide: 4.3m(14.02ft) / Tele: 18.7m(61.33ft)

This report shall not be reproduced except in full, without the written approval of KES Co., Ltd.  
The results shown in this test report refer only to the sample(s) tested unless otherwise stated.  
The authenticity of the test report, contact kes@kes.co.kr

## 1.1 Test Voltage & Frequency

Unless indicated otherwise on the individual data sheet or test results, the test voltage and frequency was as indicated below.

☒ AC 100 V, 60 Hz(PoE)

## 1.2 Variant Model Differences

Not applicable

## 1.3 Device Modifications

Not applicable

## 1.4 Equipment Under Test

Description	Model Number	Serial Number	Manufacturer	Remarks
NETWORK CAMERA	QNO-C8083R	-	HANWHA VISION VIETNAM COMPANY LIMITED	EUT

## 1.5 Support Equipments

Description	Model Number	Serial Number	Manufacturer	Remarks
PoE Adaptor	PT-PSE109GBRO-AH	-	Dongguan PROCET Network Technology Co.,Ltd	-
Notebook	P95G001	9JM8HT2	DELL INC.	-
Notebook Adaptor	LA65NS2-01	-	LITE-ON TECHNOLOGY (CHANGZHOU)CO.,LTD.	-
Button Alarm	-	-	-	-
Alarm	-	-	-	-
Smartphone	-	-	SAMSUNG	-
Headset	K550	-	Britz®	-
Micro SD Card	-	-	Sandisk	8 GB

## 1.6 External I/O Cabling

Start		END		Cable Spec.	
Description	I/O Port	Description	I/O Port	Length	Shield
NETWORK CAMERA (EUT)	RJ-45 (PoE)	PoE Adaptor	RJ-45 (PoE)	3.0	U
	Slot	Micro SD Card	Slot	-	-
	Alarm OUT	Alarm	Alarm IN	3.0	U
	Alarm IN	Button Alarm	Alarm OUT	3.0	U
	Audio IN	Headset	Audio OUT	1.7	U
	Audio OUT		Audio IN	1.7	U
Notebook	RJ-45 (LAN)	PoE Adaptor	RJ-45 (LAN)	3.5	U
	3.5 mm	Smartphone	3.5 mm	0.8	U
	JACK	Notebook Adaptor	JACK	1.7	U

\* Unshielded = U, Shielded = S

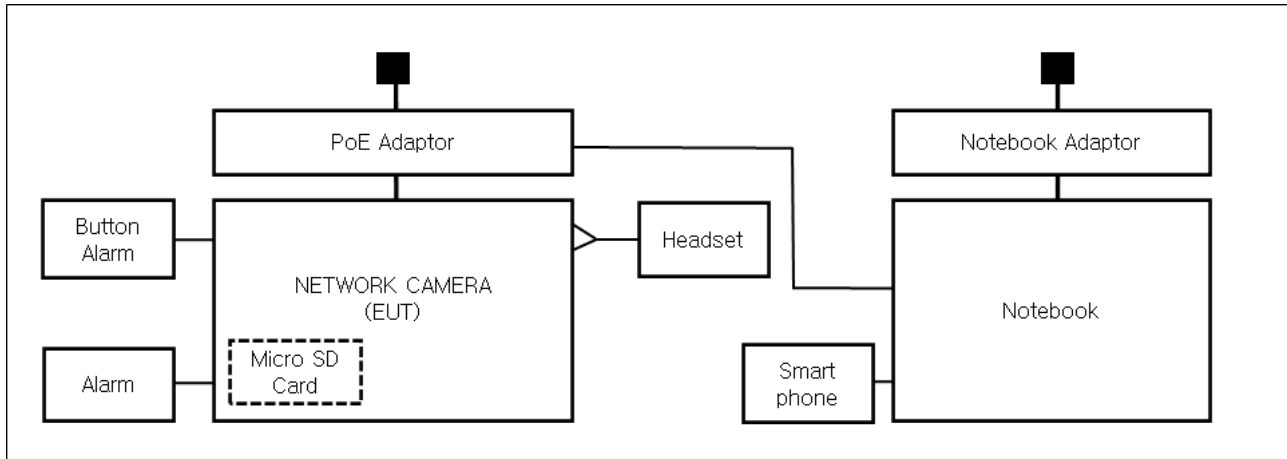
## 1.7 EUT Operating Mode(s)

Test mode	operating
Operater	<ol style="list-style-type: none"> <li>1. Check the camera video output on the laptop</li> <li>2. Check if the network status is operating normally during PING TEST</li> <li>3. Check the output of the 1 kHz tone output from the smartphone and the microphone input from the headset</li> <li>4. Press the alarm button to check the normal operation of the button alarm.</li> <li>5. Checked the files stored in the Micro SD Card after testing.</li> </ol>

EUT Test operating S/W		
Name	Version	Manufacture Company
Web Viewer	-	Hanwha Vision Co., Ltd

## 1.8 Configuration

■ AC Main  
 □ DC Main



## 1.9 Remarks when standards applied

- PoE port is considered to be wired network port, so power-related test items are excluded.
- USB port are not used and have not been tested.







## 1.10 Calibration Details of Equipment Used for Measurement

Test equipment and test accessories are calibrated on regular basis. The maximum time between calibrations is one year or what is recommended by the manufacturer, whichever is less.

## 1.11 Test Facility

The measurement facility is located at 473-21, Gayeo-ro, Yeosu-si, Gyeonggi-do, 12658, Korea, Republic of. The sites are constructed in conformance with the requirements of ANSI C63.4a-2017 and CISPR 16-1-4:2019

## 1.12 Laboratory Accreditations and Listings

Country	Agency	Scope of Accreditation	Logo
KOREA	RRA	EMI (3 m & 10 m Semi-Anechoic Chamber and conducted test site) EMS (ESD, RS, EFT/Burst, Surge, CS, Magnetic, Dips and interruptions)	 KR0100
International	KOLAS	EMI (3 m & 10 m Semi-Anechoic Chamber and conducted test site) EMS (ESD, RS, EFT/Burst, Surge, CS, Magnetic, Dips and interruptions)	 KT489
USA	FCC	3 m & 10 m Semi-Anechoic Chamber Conducted test site to perform FCC Part 15/18 measurements.	 KR0100
Canada	ISED	3 m & 10 m Semi-Anechoic Chamber and Conducted test site	 23298
JAPAN	VCCI	EMI (3 m & 10 m Semi-Anechoic Chamber and conducted test site)	 C-20136, T-20137, R-20181, G-20176
Europe	TÜV SÜD	EMI (3 m & 10 m Semi-Anechoic Chamber and conducted test site) EMS (ESD, RS, EFT/Burst, Surge, CS, Magnetic, Dips and interruptions)	 CARAT 001633 0004

This report shall not be reproduced except in full, without the written approval of KES Co., Ltd.  
The results shown in this test report refer only to the sample(s) tested unless otherwise stated.  
The authenticity of the test report, contact kes@kes.co.kr



## KES Co., Ltd.

3701, 40, Simin-daero 365beon-gil,  
Dongan-gu, Anyang-si, Gyeonggi-do, 14057, Korea  
Tel: +82-31-425-6200 / Fax: +82-31-424-0450  
www.kes.co.kr

Report No.:

KES-EM-23T0112

Page (11) of (32)

## 2.0 Test Regulations

The emissions tests were performed according to following regulations:

☒ **VCCI-CISPR 32:2016**

☒ Class A

☐ Class B

This report shall not be reproduced except in full, without the written approval of KES Co., Ltd.  
The results shown in this test report refer only to the sample(s) tested unless otherwise stated.  
The authenticity of the test report, contact kes@kes.co.kr

## 2.1 Conducted Emissions Mains Power Ports

**Test Date**

N/A

**Test Location**

Electro wave Shieldroom #6

**Test Equipment**

Used	Description	Model Number	Manufacturer	Serial Number	Cal. Due
<input type="checkbox"/>	EMI Test S/W	EMC32	R & S	9.12.00	-
<input type="checkbox"/>	EMI TEST RECEIVER	ESR3	R & S	101783	11, 11, 2023
<input type="checkbox"/>	LISN	ENV216	R & S	101787	11, 10, 2023
<input type="checkbox"/>	LISN	ESH2-Z5	R & S	100450	11, 10, 2023
<input type="checkbox"/>	PULSE LIMITER	ESH3-Z2	R & S	101915	11, 10, 2023

**Test Conditions**

Temperature:

°C

Relative Humidity:

% R.H.

**Frequency Range of Measurement**

150 kHz to 30 MHz

**Instrument Settings**

IF Band Width: 9 kHz

**Test Results**

The requirements are:

- ☐ PASS  
☐ NOT PASS  
☒ NOT APPLICABLE

**Remarks**

PoE port is considered to be wired network port, so power-related test items are excluded.

## 2.2 Conducted Emissions at Telecommunication Ports

### Test Date

Jan. 30, 2023

### Test Location

Electro wave Shieldroom #6

### Test Equipment

Used	Description	Model Number	Manufacturer	Serial Number	Cal. Due
<input checked="" type="checkbox"/>	EMI Test S/W	EMC32	R & S	9.12.00	-
<input checked="" type="checkbox"/>	EMI TEST RECEIVER	ESR3	R & S	101783	11, 11, 2023
<input checked="" type="checkbox"/>	LISN	ENV216	R & S	101787	11, 10, 2023
<input checked="" type="checkbox"/>	LISN	ESH2-Z5	R & S	100450	11, 10, 2023
<input checked="" type="checkbox"/>	PULSE LIMITER	ESH3-Z2	R & S	101915	11, 10, 2023
<input checked="" type="checkbox"/>	8-WIRE ISN CAT3,5	ENY81	R & S	100174	11, 22, 2023
<input type="checkbox"/>	8-WIRE ISN CAT6	ENY81-CAT6	R & S	101665	11, 22, 2023
<input type="checkbox"/>	CDN	CDNS502A	TESEQ	40431	11, 10, 2023

### Test Conditions

Temperature: (22,3 ± 0,1) °C

Relative Humidity: (45,4 ± 0,1) % R.H.

### Frequency Range of Measurement

150 kHz to 30 MHz

### Instrument Settings

IF Band Width: 9 kHz

### Test Results

The requirements are:

- ☒ PASS  
☐ NOT PASS  
☐ NOT APPLICABLE

### Remarks

- See Appendix A for test data.

- For Ethernet interfaces, measurements are required at the highest data rate supported by the interface.

## 2.3 Radiated Electric Field Emissions(Below 1 GHz)

### Test Date

Jan. 27, 2023

### Test Location

☐ OPEN AREA TEST SITE #2 ☒ SEMI ANECHOIC CHAMBER #4(10 m)

### Test Equipment

Used	Description	Model Number	Manufacturer	Serial Number	Cal. Due
<input checked="" type="checkbox"/>	EMI Test S/W	EP5/RE	TOYO Corporation	6.0.0	-
<input checked="" type="checkbox"/>	EMI TEST RECEIVER	ESU26	R & S	100551	03, 31, 2023
<input checked="" type="checkbox"/>	AMPLIFIER	SCU 01	R & S	100603	11, 10, 2023
<input checked="" type="checkbox"/>	TRILOG-BROADBAND ANTENNA	VULB9163	Schwarzbeck	715	11, 17, 2024
<input checked="" type="checkbox"/>	ATTENUATOR	8491A	HP	32173	03, 08, 2023

### Test Conditions

Temperature: (22,0 ± 0,1) °C

Relative Humidity: (45,7 ± 0,1) % R.H.

### Frequency Range of Measurement

30 MHz to 1 GHz

### Instrument Settings

IF Band Width: 120 kHz

### Test Results

The requirements are:

☒ PASS  
☐ NOT PASS  
☐ NOT APPLICABLE

### Remarks

See Appendix A for test data.

## 2.4 Radiated Electric Field Emissions(Above 1 GHz)

**Test Date**

Jan. 27, 2023

**Test Location**

SEMI ANECHOIC CHAMBER #3

**Test Equipment**

Used	Description	Model Number	Manufacturer	Serial Number	Cal. Due
<input checked="" type="checkbox"/>	EMI Test S/W	EP5/RE	TOYO Corporation	6.0.0	-
<input checked="" type="checkbox"/>	EMI TEST RECEIVER	ESR7	R & S	101190	08, 01, 2023
<input checked="" type="checkbox"/>	PREAMPLIFIER	8449B	AGILENT	3008A01967	04, 01, 2023
<input checked="" type="checkbox"/>	ATTENUATOR	8491A	HP	35496	03, 08, 2023
<input checked="" type="checkbox"/>	DOUBLE RIDGED HORN ANTENNA	SAS-571	A.H.SYSTEM,INC	781	03, 03, 2023

**Test Conditions**

Temperature: (22,2 ± 0,1) °C

Relative Humidity: (44,7 ± 0,1) % R.H.

**Frequency Range of Measurement**

1 GHz to 6 GHz

**Instrument Settings**

IF Band Width: 1 MHz

**Test Results**

The requirements are:

- ☒ PASS  
☐ NOT PASS  
☐ NOT APPLICABLE

**Remarks**See Appendix A for test data.



**KES Co., Ltd.**

3701, 40, Simin-daero 365beon-gil,  
Dongan-gu, Anyang-si, Gyeonggi-do, 14057, Korea  
Tel: +82-31-425-6200 / Fax: +82-31-424-0450  
www.kes.co.kr

Report No.:

KES-EM-23T0112

Page (16) of (32)

---

## **APPENDIX A – TEST DATA**

### **Conducted Emissions at Mains Power Ports** HOT LINE

N/A

---

This report shall not be reproduced except in full, without the written approval of KES Co., Ltd.  
The results shown in this test report refer only to the sample(s) tested unless otherwise stated.  
The authenticity of the test report, contact kes@kes.co.kr



**KES Co., Ltd.**

3701, 40, Simin-daero 365beon-gil,  
Dongan-gu, Anyang-si, Gyeonggi-do, 14057, Korea  
Tel: +82-31-425-6200 / Fax: +82-31-424-0450  
www.kes.co.kr

Report No.:  
KES-EM-23T0112  
Page (17) of (32)

---

NEUTRAL LINE

N/A

◆ Calculation

QuasiPeak[dBuV] / CAverage [dBuV] = Reading Value[dBuV] + Corr. [dB]

QuasiPeak / CAverage : The Final Value

Reading Value : Not shown in the table.

Corr. : Correction values (LISN FACTOR + (Cable Loss + Pulse Limiter FACTOR))

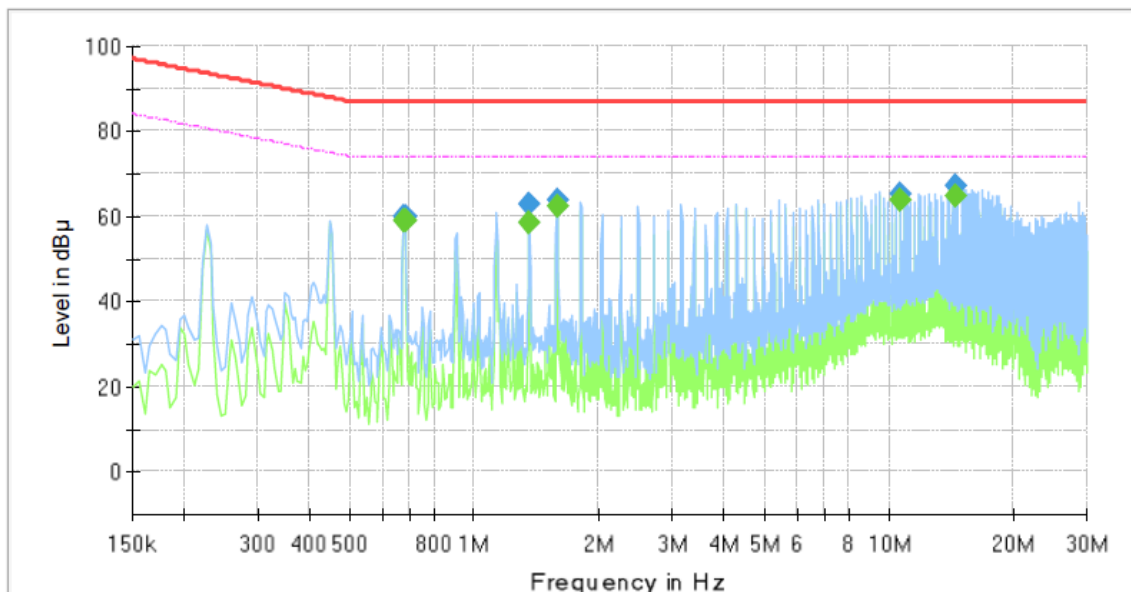
---

This report shall not be reproduced except in full, without the written approval of KES Co., Ltd.  
The results shown in this test report refer only to the sample(s) tested unless otherwise stated.  
The authenticity of the test report, contact kes@kes.co.kr

## Conducted Emissions at Telecommunication Ports [100 Mbps]

### Common Information

Test Description: Telecommunication Emission  
 Model No.: QNO-C8083R  
 Mode : TEL 100 Mbps  
 Speed :  
 Operator Name: KES



### Final Result

Frequency (MHz)	QuasiPeak (dBμV)	CAverage (dBμV)	Limit (dBμV)	Margin (dB)	Meas. Time (ms)	Bandwidth (kHz)	Line	Corr. (dB)
0.675000	---	59.01	74.00	14.99	1000.0	9.000	Single Line	19.9
0.675000	59.92	---	87.00	27.08	1000.0	9.000	Single Line	19.9
0.680000	---	59.07	74.00	14.93	1000.0	9.000	Single Line	19.9
0.680000	59.96	---	87.00	27.04	1000.0	9.000	Single Line	19.9
1.355000	---	58.71	74.00	15.29	1000.0	9.000	Single Line	20.1
1.355000	62.65	---	87.00	24.35	1000.0	9.000	Single Line	20.1
1.580000	---	62.20	74.00	11.80	1000.0	9.000	Single Line	20.1
1.580000	63.74	---	87.00	23.26	1000.0	9.000	Single Line	20.1
10.615000	---	63.76	74.00	10.24	1000.0	9.000	Single Line	19.7
10.615000	65.12	---	87.00	21.88	1000.0	9.000	Single Line	19.7
14.455000	---	64.60	74.00	9.40	1000.0	9.000	Single Line	19.7
14.455000	67.18	---	87.00	19.82	1000.0	9.000	Single Line	19.7

#### ◆ Calculation

QuasiPeak[dBuV] / CAverage [dBuV] = Reading Value[dBuV] + Corr. [dB]

QuasiPeak / CAverage : The Final Value

Reading Value : Not shown in the table.

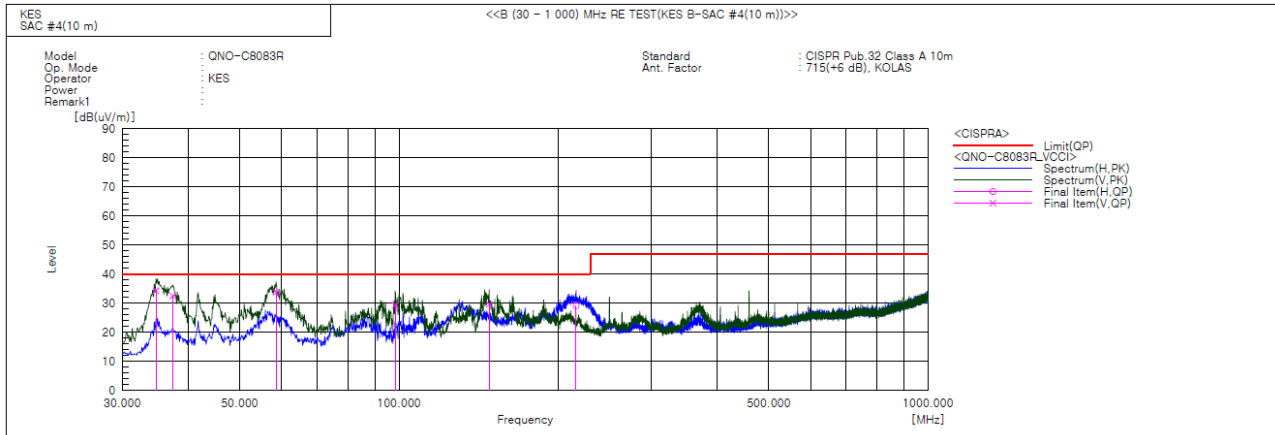
Corr. : Correction values (ISN FACTOR + (Cable Loss + Pulse Limiter FACTOR))

This report shall not be reproduced except in full, without the written approval of KES Co., Ltd.

The results shown in this test report refer only to the sample(s) tested unless otherwise stated.

The authenticity of the test report, contact kes@kes.co.kr

## Radiated Electric Field Emissions(Below 1 GHz)



### Final Result

No.	Frequency [MHz]	(P)	Reading QP [dB(uV)]	c.f [dB(1/m)]	Result QP [dB(uV/m)]	Limit QP [dB(uV/m)]	Margin QP [dB]	Height [cm]	Angle [deg]	Remark
1	34.729	V	58.6	-24.3	34.3	40.0	5.7	142.0	87.0	
2	37.396	V	55.9	-23.4	32.5	40.0	7.5	116.0	117.0	
3	58.615	V	55.1	-21.3	33.8	40.0	6.2	144.0	110.0	
4	98.385	V	51.4	-22.1	29.3	40.0	10.7	108.0	200.0	
5	148.098	V	54.5	-24.9	29.6	40.0	10.4	396.0	49.0	
6	216.119	H	48.9	-19.8	29.1	40.0	10.9	397.0	42.0	

### ◆ Calculation

Corrected Amplitude [dBuV] = Amplitude[dBuV] + Correction Factor [dB]

Corrected Amplitude : The Final Value, Amplitude : Reading Value,

Correction Factor : ANT FACTOR + Cable loss



## KES Co., Ltd.

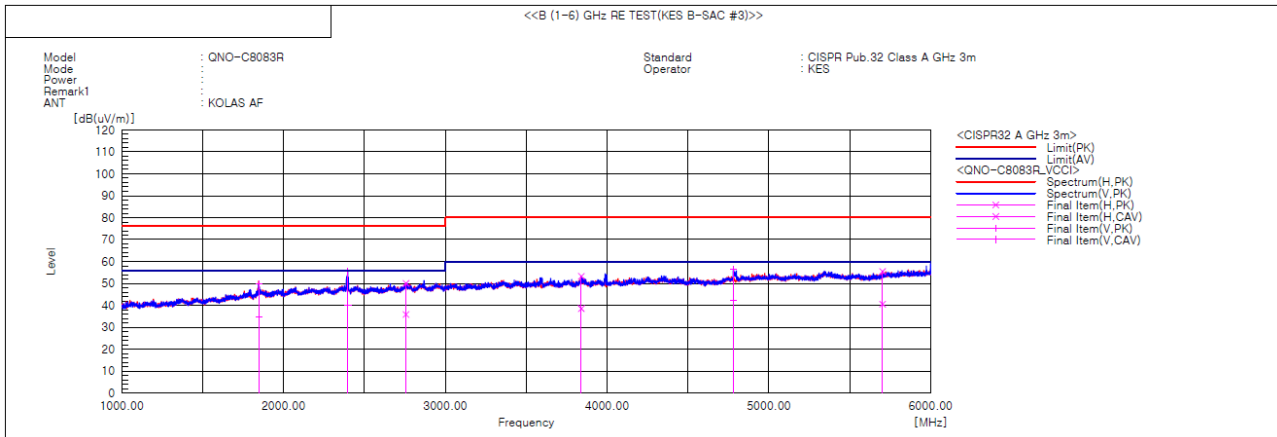
3701, 40, Simin-daero 365beon-gil,  
Dongan-gu, Anyang-si, Gyeonggi-do, 14057, Korea  
Tel: +82-31-425-6200 / Fax: +82-31-424-0450  
www.kes.co.kr

Report No.:

KES-EM-23T0112

Page (20) of (32)

## Radiated Electric Field Emissions(Above 1 GHz)



### Final Result

No.	Frequency [MHz]	(P)	Reading PK [dB(uV)]	Reading CAV [dB(uV)]	c.f [dB(1/m)]	Result PK [dB(uV/m)]	Result CAV [dB(uV/m)]	Limit PK [dB(uV/m)]	Limit AV [dB(uV/m)]	Margin PK [dB]	Margin CAV [dB]	Height [cm]	Angle [deg]	Remark
1	1846.645	V	46.0	30.8	3.7	49.7	34.5	76.0	56.0	26.3	21.5	100.0	43.5	
2	2397.756	V	49.3	33.9	6.3	55.6	40.2	76.0	56.0	20.4	15.8	100.0	142.8	
3	2756.015	H	42.7	28.5	7.4	50.1	35.9	76.0	56.0	25.9	20.1	100.0	194.4	
4	3840.152	H	42.5	27.7	10.8	53.3	38.5	80.0	60.0	26.7	21.5	100.0	64.0	
5	4780.025	V	43.3	29.1	13.0	56.3	42.1	80.0	60.0	23.7	17.9	100.0	12.2	
6	5702.142	H	40.2	25.3	15.3	55.5	40.6	80.0	60.0	24.5	19.4	100.0	4.7	

### ◆ Calculation

Result(PK/CAV) [dB(μV/m)] = (Reading(PK/CAV)[dB(μV)] + c.f[dB(1/m)])

Margin(PK/CAV)[dB] = Limit[dB(μV/m)] - Result(PK/CAV) [dB(μV/m)]

Reading(PK/CAV) : Reading value, Result(PK/CAV) : Reading value + Factor value

Limit(QP) : Limit value, c.f : (ANT Factor + Cable Loss - Preamp Factor), Margin: Margin value

This report shall not be reproduced except in full, without the written approval of KES Co., Ltd.

The results shown in this test report refer only to the sample(s) tested unless otherwise stated.

The authenticity of the test report, contact kes@kes.co.kr



**KES Co., Ltd.**

3701, 40, Simin-daero 365beon-gil,  
Dongan-gu, Anyang-si, Gyeonggi-do, 14057, Korea  
Tel: +82-31-425-6200 / Fax: +82-31-424-0450  
www.kes.co.kr

Report No.:

KES-EM-23T0112

Page (21) of (32)

---

## **Test Setup Photos and Configuration**

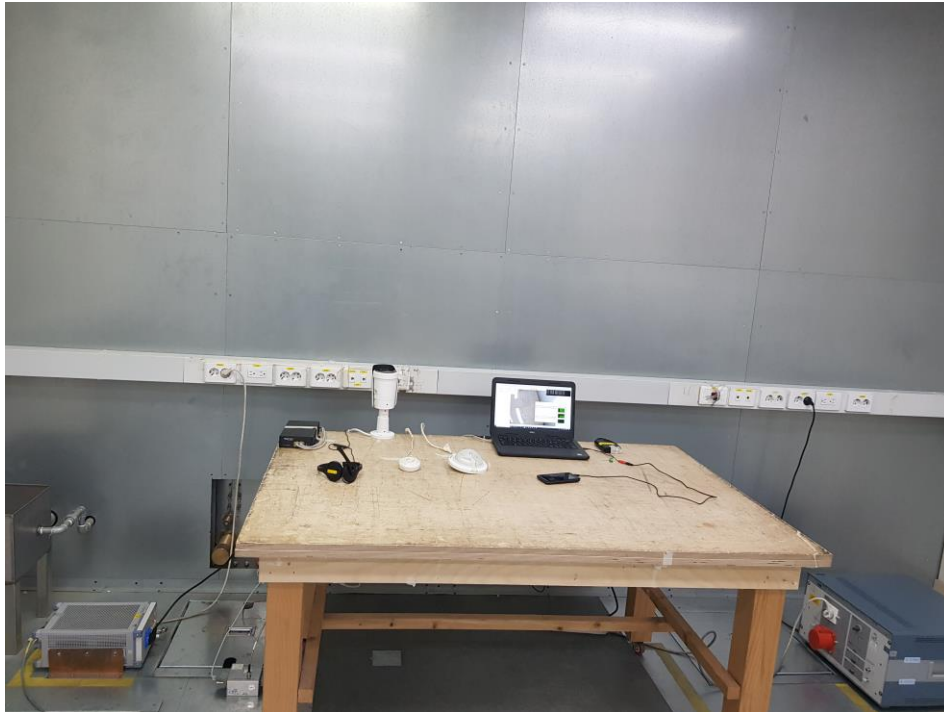
### **Conducted Emissions at Mains Power Ports**

N/A

---

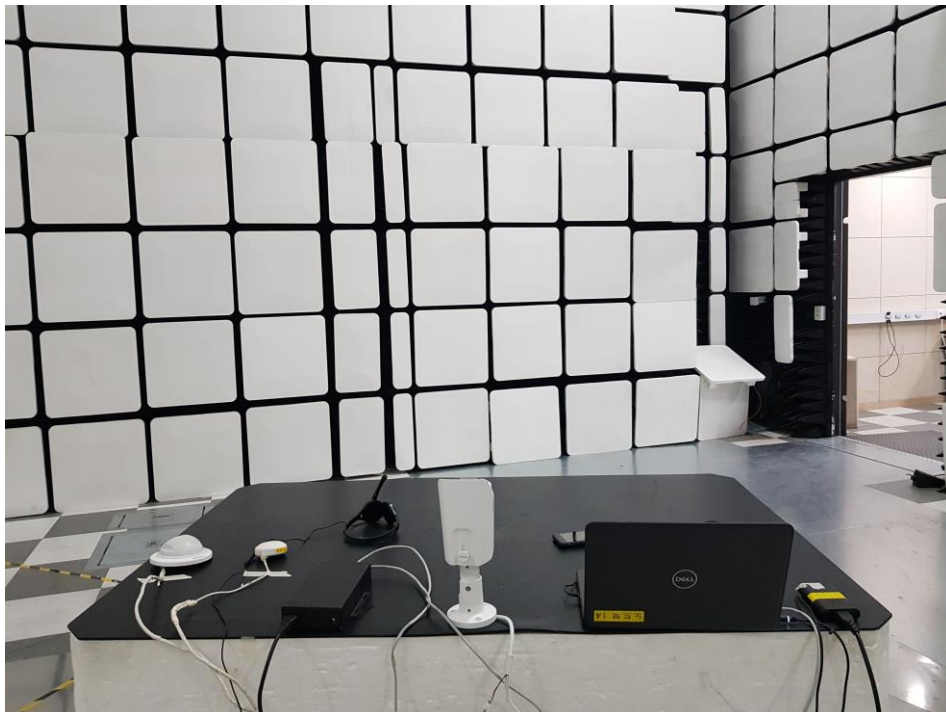
This report shall not be reproduced except in full, without the written approval of KES Co., Ltd.  
The results shown in this test report refer only to the sample(s) tested unless otherwise stated.  
The authenticity of the test report, contact kes@kes.co.kr

## Conducted Emissions at Telecommunication Ports



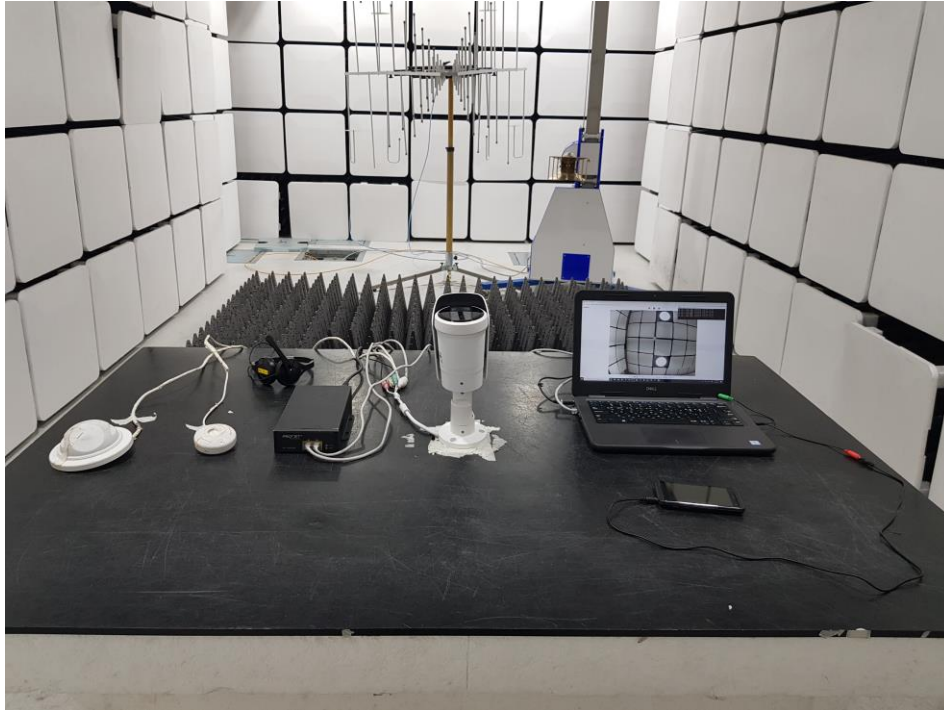
This report shall not be reproduced except in full, without the written approval of KES Co., Ltd.  
The results shown in this test report refer only to the sample(s) tested unless otherwise stated.  
The authenticity of the test report, contact kes@kes.co.kr

## Radiated Electric Field Emissions(Below 1 GHz)



This report shall not be reproduced except in full, without the written approval of KES Co., Ltd.  
The results shown in this test report refer only to the sample(s) tested unless otherwise stated.  
The authenticity of the test report, contact kes@kes.co.kr

## Radiated Electric Field Emissions(Above 1 GHz)



This report shall not be reproduced except in full, without the written approval of KES Co., Ltd.  
The results shown in this test report refer only to the sample(s) tested unless otherwise stated.  
The authenticity of the test report, contact kes@kes.co.kr

## EUT External Photographs

(Top)



(Bottom)



This report shall not be reproduced except in full, without the written approval of KES Co., Ltd.  
The results shown in this test report refer only to the sample(s) tested unless otherwise stated.  
The authenticity of the test report, contact kes@kes.co.kr

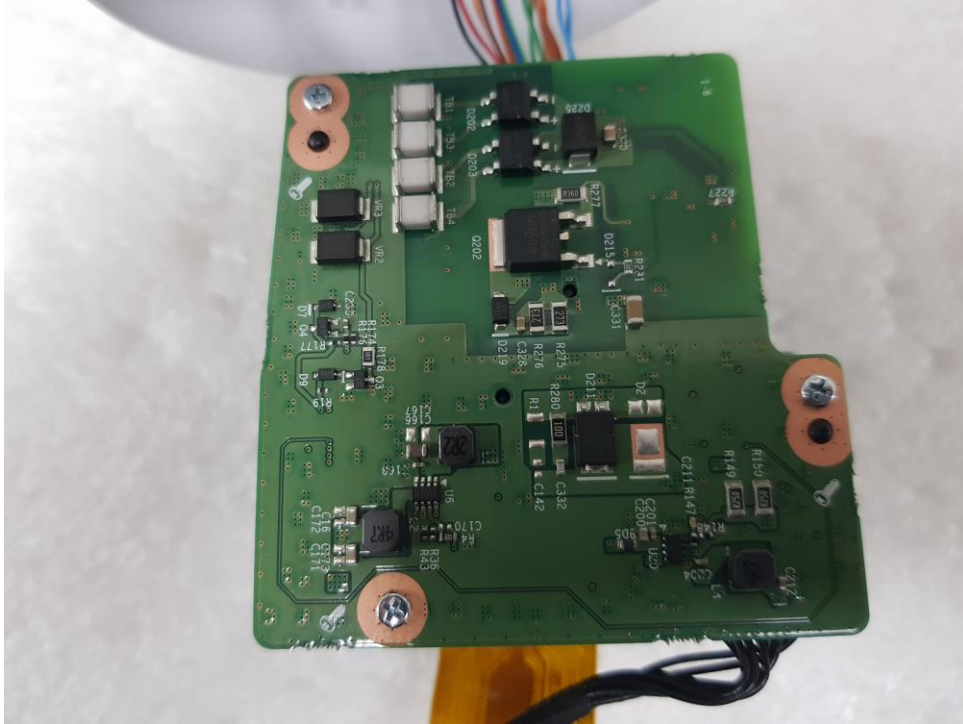
## EUT Internal Photographs

(Internal View)



## EUT Internal View – Main Board 1

(Top)



(Bottom)



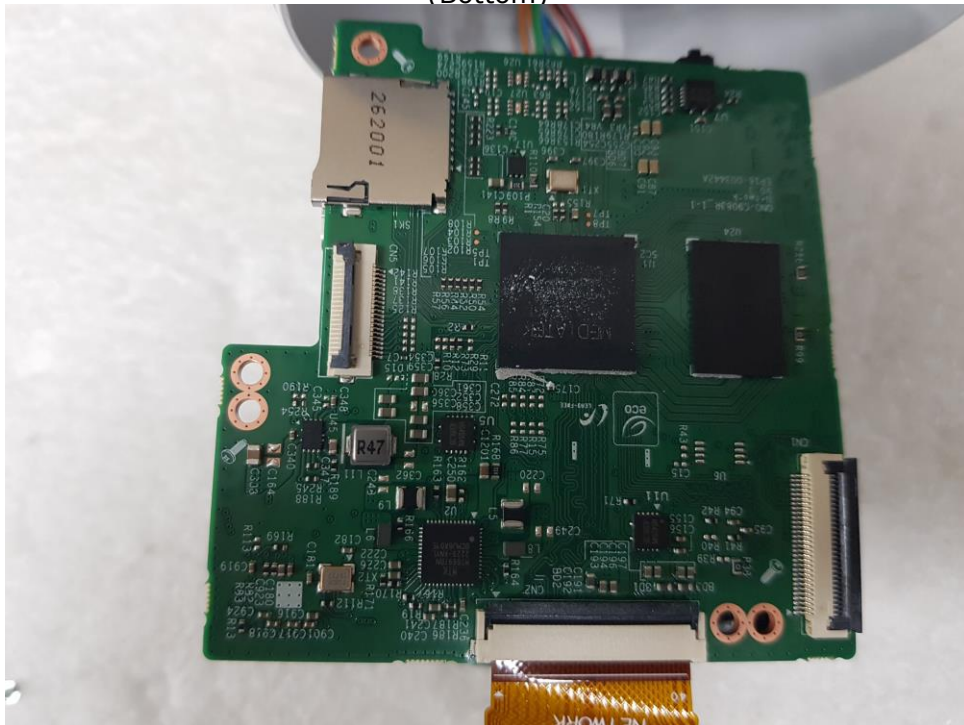
This report shall not be reproduced except in full, without the written approval of KES Co., Ltd.  
The results shown in this test report refer only to the sample(s) tested unless otherwise stated.  
The authenticity of the test report, contact kes@kes.co.kr

## EUT Internal View – Main Board 2

(Top)



(Bottom)



This report shall not be reproduced except in full, without the written approval of KES Co., Ltd.  
The results shown in this test report refer only to the sample(s) tested unless otherwise stated.  
The authenticity of the test report, contact kes@kes.co.kr

## EUT Internal View – SUB Board

(Top)

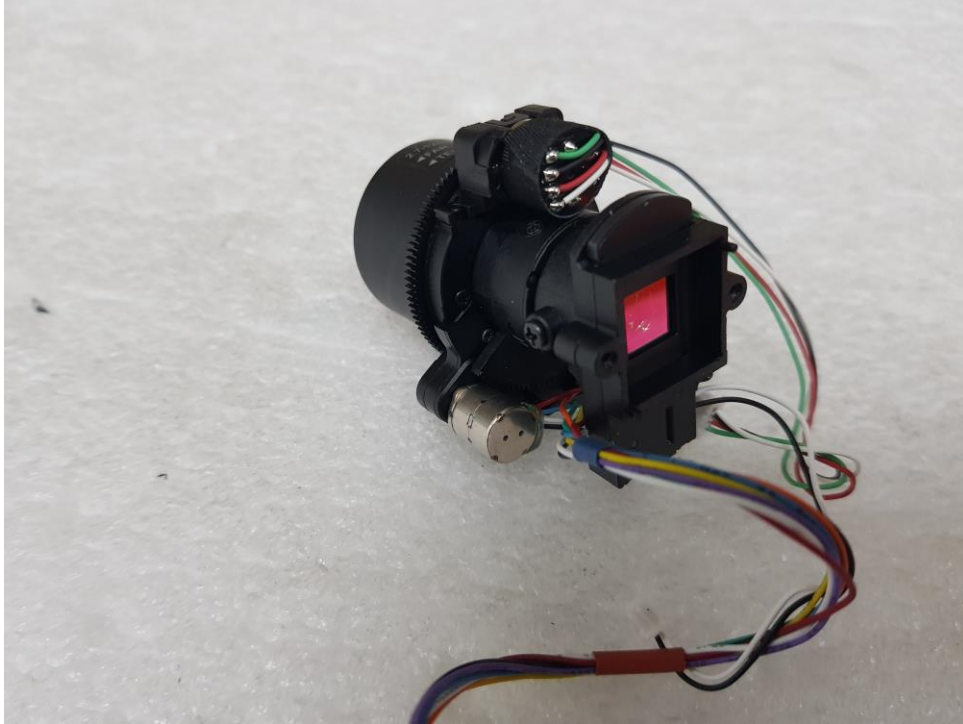


(Bottom)



**EUT Internal View – Camera Lens**

(Top)



(Bottom)



## EUT Internal View – Camera Lens Board

(Top)

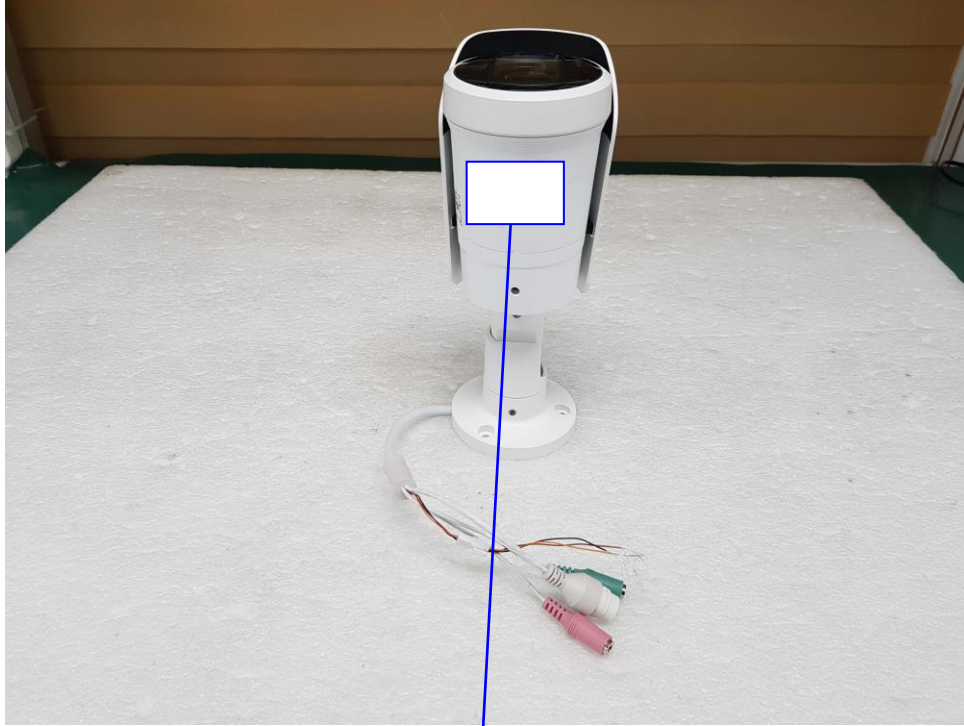


(Bottom)



This report shall not be reproduced except in full, without the written approval of KES Co., Ltd.  
The results shown in this test report refer only to the sample(s) tested unless otherwise stated.  
The authenticity of the test report, contact kes@kes.co.kr

## Label Photographs



この装置は、クラスA情報技術装置です。この装置を家庭環境で使用すると電波妨害を引き起こすことがあります。この場合には使用者が適切な対策を講ずるよう要求されることがあります。

VCCI-A