

DECLARATION OF CONFORMITY

**We; Hanwha Techwin Company Limited
DECLARE UNDER OUR SOLE RESPONSIBILITY THAT THE PRODUCT;**

Report No:	KES-E1-16T0076
Type of equipment:	DVR
Model Name:	SRD-493P
Variant Model:	SDR-B73300P
Applicant:	Hanwha Techwin Company Limited.
Address:	1204,Changwon-daero, Seongsan-gu, Changwon-si, Gyeongsangnam-do,Korea
Manufacturer :	Tianjin Samsung Techwin Opto-Electronic Co.,Ltd.
Address:	No.11 Weiliu Rd, Micro-Electronic Industrial Park, TEDA, Tianjin, 300385, People's Republic of China
Test standards :	AS/NZS CISPR22:2009+A1:2010
Classification:	C-Tick

The above equipment was tested by EMC compliance Testing Laboratory for with the requirements of C-tick Rules and Regulations. The results of testing in this report apply to the product / system which was tested only.

Feb. 24. 2015
(Date of issue)

(Name and signature of authorized person)



EMC TEST REPORT For C-TICK

Test Report No. : KES-E1-16T0076

Date of Issue : Feb. 02, 2016

Product name : DVR

Model/Type No. : SRD-493P

Variant Model : SDR-B73300P

Applicant : Hanwha Techwin Company Limited.

Applicant Address : 1204, Changwon-daero, Seongsan-gu, Changwon-si,
Gyeongsangnam-do, korea

Manufacturer : Tianjin Samsung Techwin Opto-Electronic Co.,Ltd.

Manufacturer Address : No.11 Weiliu Rd, Micro-Electronic Industrial Park, TEDA, Tianjin,
300385, People's Republic of China

Date of Receipt : Feb. 24, 2016

Test date : Feb. 18, 2016 - Feb. 23, 2016

Test Results : ☒ **In Compliance** ☐ **Not in Compliance**

Tested by

Dae Hyun, Kim
EMC Test Engineer

Reviewed by

Dong-Hun, Jang
EMC Technical Manager

**KES Co., Ltd.**

C-3701, Simin-daero 365-40,
Dongan-gu, Anyang-si, Gyeonggi-do, 14057, Korea
Tel: +82-31-425-6200 / Fax: +82-31-424-0450
www.kes.co.kr

Test report No.:
KES-E1-16T0076
Page (2) of (34)

REPORT REVISION HISTORY

Date	Revision	Page No
Feb. 24, 2016	KES-E1-16T0076	Issued

This report shall not be reproduced except in full, without the written approval of KES Co., Ltd. This document may be altered or revised by KES Co., Ltd. personnel only, and shall be noted in the revision section of the document. Any alteration of this document not carried out by KES Co., Ltd. will constitute fraud and shall nullify the document.

This report shall not be reproduced except in full, without the written approval of KES Co., Ltd.
The results shown in this test report refer only to the sample(s) tested unless otherwise stated.



TABLE OF CONTENTS

1.0	General Product Description.....	4
1.1	Test Voltage & Frequency	6
1.2	Variant Model Differences.....	6
1.3	Device Modifications	6
1.4	Equipment Under Test.....	6
1.5	Support Equipments	7
1.6	External I/O Cabling	8
1.7	EUT Operating Mode(s)	9
1.8	Configuration.....	9
1.9	Calibration Details of Equipment Used for Measurement	10
1.10	Test Facility	10
1.11	Laboratory Accreditations and Listings	10
2.0	Test Regulations.....	11
2.1	Conducted Emissions at Mains Power Ports.....	13
2.2	Conducted Emissions at Telecommunication Ports.....	14
2.3	Radiated Electric Field Emissions(Below 1 GHz)	15
2.4	Radiated Electric Field Emissions(Above 1 GHz)	16
APPENDIX A – TEST DATA.....		17
Conducted Emissions at Mains Power Ports.....		17
.....		18
.....		18
Conducted Emissions at Telecommunication Ports		19
Radiated Electric Field Emissions(Below 1 GHz)		21
Radiated Electric Field Emissions(Above 1 GHz).....		22
EUT External Photographs.....		30
EUT Internal Photographs		31
Main Board EUT Internal View – Sub Board 1.....		32
Main Board EUT Internal View – Main Board		33
Main Board EUT Internal View – HDD		34

1.0 General Product Description

Main Specifications of EUT are:

Display		Full HD 4CH DVR SDR-B73300
Video	Inputs	4CH BNC
	Resolution	1920 x 1080 (Full HD) / 1280 x 720 (HD) / 960x480 (w D1)
Live	Frame rate	120fps@ 1920 x 1080 / 120fps@1280 x 720 / 120fps@960 x 480
	Resolution	1920 x 1080 (Full HD) / 1280 x 720 (HD) / 960x480 (w D1)
	Multi Screen display	1 / 4 / Sequence / PIP
Performance operating system		
Recording	Embedded	Linux
	Compression	H.264
	Record Rate	120fps@1080p
	Mode	Manual, Schedule (Continuous/Event), Event(Pre/Post), Time lapse (1~30 fps)
	Event	Video Loss, Motion(Sensitivity Level 1~10), Tampering
	Overwrite modes	Continuous
	Pre-alarm	Off/5sec
Search & Playback	Post-Alarm	Up to 6 hour (5,10,20,30 sec,1,3,5,10,20 min,1,2,3,4,5,6hour)
	Search mode	Date,time, Event, Back up, Motion (All search included preview function) Fast forward / backward (2x, 4x, 8x, 16x, 32x, 64x) backward play with frame only
	Playback function	Slow forward / backward (1/2x, 1/4x, 1/8x) Scene forward / backward (2x, 4x, 8x, 16x, 32x, 64x) backward play with frame only
Network (IPv4)	Transmission speed	4CIF 120fps / 2CIF 240fps / CIF 480fps(TBD)
	Bandwidth	Up to 32Mbps(TBD)
	Bandwidth control	Selectable
	Live stream	H.264(HD,4CIF,2CIF,CIF Selectable)(TBD)
	Remote users Maximum	Search 3 / Live unicast 10 / Live multicast 20(TBD)
	Protocol support	TCP/IP, UDP/IP, DHCP, PPPoE, SMTP, NTP, HTTP, DDNS, RTP, TSP, UPnP
	Monitoring	Smart viewer, Webviewer, Mobile Viewer
Smart phone	Web / App viewer	Supported OS - PC : Windows XP / VISTA / 7 / 8, MAC OS X 10.7 / 10.9 - Mobile : Android OS v2.3.5, v4.0.3, v4.1.2, 4.2, v4.3 iOS OS v5.1.1, v6.0, v6.0.2, v6.1, v7.0
		Supported Browser - Microsoft Internet Explorer (Ver. 11,10,9,8,7), Mozilla Firefox (Ver.19,18,17,16,15,14,13,12,11,10,9), Google Chrome (Ver.25,24,23,22,21,20,19,18,17,16,15), Apple Safari (v5.1, v6.1, v7.0)(Mac OS X only - 10.9, 10.8, 10.7)
		Protocol support RTP, RTSP, HTTP, CGI
	Transmission speed	CIF Max. 16fps (Single channel) / CIF Max. 4fps (Quad channel)
	Remote users Maximum	Live(1)
	Internal HDD	1 SATA HDD (1TB)
	USB (Back-up)	2 USB Ports
Storage	File Format (Back-up)	BU(Playback from DVR), SEC (includes Player), AVI
	Password Protection	1 Admin, 10 Group, 10 User per 1 Group(TBD)
Security	Data Authentication	Watermark
Interface		
Monitors	VGA	1 VGA(1280x720, 1280x1024, 1920x1080) 60Hz
	HDMI	1 HDMI (1280x720, 1280x1024, 1920x1080) 60Hz
Audio	Simultaneous Output	VGA and HDMI
	Inputs/Output	1CH line in / 1CH line out
	Compression	G.711
Alarm	Sampling Rate	8KHz
	Remote notification	Notification via e-mail
Connections	Ethernet	1 RJ45 10/100 Base-T
	Serial interface	RS-485
	USB	USB 2.0, 2 ports (Front/Rear)
	Application Support	Mouse, WiFi
	Protocol support	Samsung-T/E, Pelco-D/P, Panasonic, Phillips, AD, Vicon, GE
Coax Protocol		
General		
Electrical	Input Voltage/Current	12VDC Adaptor, 100~250VAC, 50/60Hz
	Power consumption	TBD
Environmental	Operating Temperature/Humidity	0°C ~ 40°C (32°F ~ 104°F) / 20% ~ 85%RH
	Dimension (with hard disk)	TBD
Mechanical	Weight (with hard disks)	TBD
	Language	Korean, Japanese, Chinese (Simplified), English, French, German, Spanish (European), Italian, Russian, Polish, Czech, Turkish, Dutch, Portuguese (South American), Swedish, Danish, Thai, Romanian, Serbian, Croatian, Hungarian, Greek, Chinese (Traditional), Finnish, Norwegian (25 Language)

**KES Co., Ltd.**

C-3701, Simin-daero 365-40,
Dongan-gu, Anyang-si, Gyeonggi-do, 14057, Korea
Tel: +82-31-425-6200 / Fax: +82-31-424-0450
www.kes.co.kr

Test report No.:
KES-EI-16T0076
Page (5) of (34)

Video	SDC-9441BC Camera
Imaging Device	2M CMOS (1/2.9")
Effective Pixels	1984(H) x 1105(V)
Scanning System	Progressive, 30fps/25fps
Synchronization	Internal
Min. Illumination	0 Lux (IR LED ON)
Camera Output	1 CH BNC Maximum Transmission Length: Over 300m (75Ω 3C2V)
Accessory Cable Length	60ft (18.3m) included
Lens Type	
Focal Length	4mm
Max. Aperture Ratio	F2.1
Angular Field of View(H / V / D)	H:72.2°, V: 52.9°, D:94.3°
Operational	
Shutter Mode	Auto(Rolling Shutter)
Gain Control	Auto
White Balance	Auto (1800~10500°K)
Wide Dynamic Range	N/A
Contrast Enhancement	N/A
Digital Noise Reduction	3 DNR
OSD	N/A
Flickerless	Auto
Day & Night	TRUE D/N, Auto
IR Distance	25M
Environmental	
Operating Temperature / Humidity	-10 °C ~ +50 °C (+14 °F ~ +122 °F) / Less than 90 % RH
Ingress Protection	IP66
Electrical	
Input Voltage	DC 12V
Power Consumption	3.7W
Mechanical	
Color / Material	Front: Gray Silver/PC BODY: White/PC BRACKET: White/ADC12
Dimension (WxHxD/ØxH)	142.55mm*61.95mm*61.83mm
Weight	191g

This report shall not be reproduced except in full, without the written approval of KES Co., Ltd.
The results shown in this test report refer only to the sample(s) tested unless otherwise stated.



1.1 Test Voltage & Frequency

Unless indicated otherwise on the individual data sheet or test results, the test voltage and frequency was as indicated below.

Voltage ☐ 100 Vac ☐ 110 Vac ☒ 230 Vac ☐ 24 Vac ☐ 12 Vdc
Frequency ☒ 50 Hz ☐ 60 Hz ☐ Hz

1.2 Variant Model Differences

Model name	Differences
SDR-B77300P	Model Management of seller

1.3 Device Modifications

Not applicable

1.4 Equipment Under Test

Description	Model Number	Serial Number	Manufacturer	Remarks
DVR	SRD-493P	-	Hanwha Techwin Co., Ltd.	E.U.T
Switching Power Adapter	FSP040-RHAN2	-	FSP GROUP INC.	
DIGITAL COLOR CAMERA	SDC-9441BCN	ZC4V6V2GB00E03X	Hanwha Techwin Co., Ltd.	
		ZC4V6V2GB00E00T		
		ZC4V6V2GB00E0KT		
		ZC4V6V2GB00E0JE		
HDD	WD20EURX-64HYZY0	WCC4MNDR29S0	WD	



1.5 Support Equipments

Description	Model Number	Serial Number	Manufacturer	Remarks
Monitor 1	M1950DM	108KCLH4W536	LG Electronics	-
Monitor Adapter 1	PA-1650-68	OCOGN612314034864	LITE-ON TECHNOLOGY CORPORATION	-
Monitor 2	M1950DM	206KCLH81256	LG Electronics	-
Monitor Adapter 2	PA-1650-64	OE9FA612314103637	LITE-ON TECHNOLOGY CORPORATION	-
Notebook	NT63025J	JK9091EF400142M	Samsung Electronics	-
Notebook Adapter	A13-040N2A	CN60BA4400313AD0N 843KO200	Chicony Power Technology (suzhou)Co., Ltd.	-
PTZ CONTROLLER	SPC-1010	-	Hanwha Techwin Co., Ltd.	-
ADAPTER	JPW115KA1200M 03	-	-	-
MIC	CMK-303	-	CAMAC	-
Spearker	-	-	-	-
Mouse	-	-	Samsung Electronics	-



1.6 External I/O Cabling

Start		END		Cable Spec.	
Description	I/O Port	Description	I/O Port	Length	Shield
DVR (E.U.T)	RJ-45	NOTEBOOK	RJ-45	4.0	U
	RS-485	PTZ CONTROLLER	RS-485	3.0	U
	D-SUB	Montior 1	D-SUB	1.5	S
	HDMI	Montior 2	HDMI	1.7	S
	Audio In	Speaker	Audio Out	1.2	U
	Audio Out	MIC	Audio In	1.2	U
	USB	Mouse	USB	1.3	U
	BNC	DIGITAL COLOR CAMERA	BNC	10.0	S
	BNC	DIGITAL COLOR CAMERA	BNC	10.0	S
	BNC	DIGITAL COLOR CAMERA	BNC	10.0	S
	BNC	DIGITAL COLOR CAMERA	BNC	10.0	S

* Unshielded=U, Shielded=S

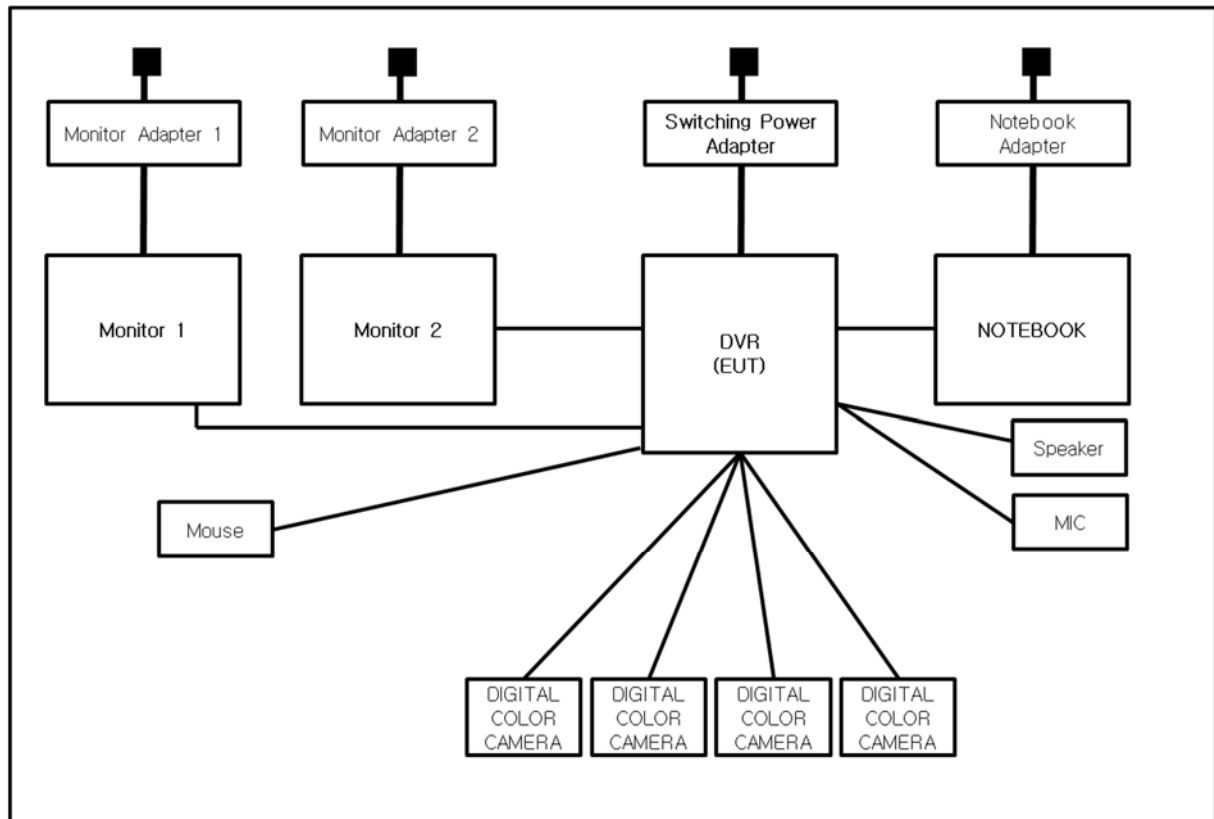
1.7 EUT Operating Mode(s)

Equipment under test was operated during the measurement under the following conditions:

Test mode	Normal operating
Normal	MONITORING , PING TEST

1.8 Configuration

■ AC Main(230 v / 50 Hz)
□ DC Main









1.9 Calibration Details of Equipment Used for Measurement

Test equipment and test accessories are calibrated on regular basis. The maximum time between calibrations is one year or what is recommended by the manufacturer, whichever is less.

1.10 Test Facility

The measurement facility is located at 473-29 Gayeo-ro, Yeosu-si, Gyeonggi-do, 12658, Korea. The sites are constructed in conformance with the requirements of ANSI C63.4 and CISPR Publication 22.

1.11 Laboratory Accreditations and Listings

Country	Agency	Scope of Accreditation	Logo
USA	FCC	3 & 10 meter Open Area Test Sites and one conducted site to perform FCC Part 15/18 measurements.	
JAPAN	VCCI	Mains Ports Conducted Interference Measurement, Telecommunication Ports Conducted Disturbance Measurement and Radiation 10 meter site, Facility for measuring radiated disturbance above 1 GHz	 R-4308, C-4798, T-2311, G-914
KOREA	MSIP	EMI (10 meter Open Area Test Site and two conducted sites) Radio(3 & 10 meter Open Area Test Sites and one conducted site) EMS (ESD, RS, EFT/Burst, Surge, CS, Magnetic, Dips and interruptions)	 KR0100
Canada	IC	3 & 10 meter Open Area Test Sites and one conducted site	 4769B-1
Europe	CE	EMI (10 meter Open Area Test Site and two conducted sites) Radio(3 & 10 meter Open Area Test Sites and one conducted site) EMS (ESD, RS, EFT/Burst, Surge, CS, Magnetic, Dips and interruptions)	
International	KOLAS	EMI (10 meter Open Area Test Site and two conducted sites) Radio(3 & 10 meter Open Area Test Sites and one conducted site) EMS (ESD, RS, EFT/Burst, Surge, CS, Magnetic, Dips and interruptions)	

2.0 Test Regulations

The emissions tests were performed according to following regulations:

☐ **EMC – Directive 2004/108/EC**

☐ EN 61000-6-3:2011

☐ EN 61000-6-1:2007

☐ EN 61000-6-4:2007 +A1:2011

☐ EN 61000-6-2:2005

☐ EN 55011:2007 +A1:2010

☐ Group 1
☐ Class A

☐ Group 2
☐ Class B

☐ EN 55014-1:2006 +A2:2011

☐ EN 55014-2:1997 +A2:2008

☐ EN 55015:2013

☐ EN 55022:2010

☐ Class A

☐ Class B

☐ EN 55024:2010

☐ EN 50130-4:2011 +A1:2014

☐ EN 61000-3-2:2014

☐ EN 61000-3-3:2013

☐ EN 61326-1:2013

☐ VCCI V-3/2013.04

☐ Class A

☐ Class B

☒ AS/NZS CISPR22:2009 +A1:2010

☒ Class A

☐ Class B

☐ 47 CFR Part 15, Subpart B / ANSI C63.4-2009

☐ Class A

☐ Class B

☐ IC Regulation ICES-003 : 2012
/ ANSI C63.4-2014

☐ Class A

☐ Class B

☐ CISPR 22:2009 +A1:2010

☐ Class A

☐ Class B



KES Co., Ltd.

C-3701, Simin-daero 365-40,
Dongan-gu, Anyang-si, Gyeonggi-do, 14057, Korea
Tel: +82-31-425-6200 / Fax: +82-31-424-0450
www.kes.co.kr

Test report No.:
KES-E1-16T0076
Page (12) of (34)

☐ **R&TTE- Directive 1999/5/EC**

☐ EN 301 489-1 V1.9.2

- ☐ Equipment for fixed use
- ☐ Equipment for vehicular use
- ☐ Equipment for portable use

☐ EN 301 489-3 V1.6.1

☐ EN 301 489-17 V2.2.1

☐ EN 60945:2002

This report shall not be reproduced except in full, without the written approval of KES Co., Ltd.
The results shown in this test report refer only to the sample(s) tested unless otherwise stated.



2.1 Conducted Emissions at Mains Power Ports

Test Date

Feb. 23, 2016

Test Location

Electro wave Shieldroom

Test Equipment

Used	Description	Model Number	Manufacturer	Serial Number	Cal. Due
<input checked="" type="checkbox"/>	EMI Test Receiver	ESR3	R&S	101783	05, 06, 2016
<input checked="" type="checkbox"/>	LISN	ENV216	R&S	101137	02, 04, 2017
<input checked="" type="checkbox"/>	LISN	ENV216	R&S	101786	05, 06, 2016
<input checked="" type="checkbox"/>	Electro wave Shieldroom	-	SEMITEC	-	-

Test Conditions

Temperature: 21.8 °C

Relative Humidity: 37,6 %

Frequency Range of Measurement

150 kHz to 30 MHz

Instrument Settings

IF Band Width: 9 kHz

Test Results

The requirements are:

- ☒ PASS
☐ NOT PASS
☐ NOT APPLICABLE

Remarks

See Appendix A for test data.

2.2 Conducted Emissions at Telecommunication Ports

Test Date

Feb. 23. 2016

Test Location

Electro wave Shieldroom

Test Equipment

Used	Description	Model Number	Manufacturer	Serial Number	Cal. Due
<input checked="" type="checkbox"/>	EMI Test Receiver	ESR3	R&S	101783	05, 06, 2016
<input checked="" type="checkbox"/>	LISN	ENV216	R&S	101137	02, 04, 2017
<input checked="" type="checkbox"/>	LISN	ENV216	R&S	101786	05, 06, 2016
<input checked="" type="checkbox"/>	8-Wire ISN CAT3	CAT3 8158	Schwarzbeck Mess	8158-0019	04, 02, 2016
<input checked="" type="checkbox"/>	8-Wire ISN CAT5	CAT5 8158	Schwarzbeck Mess	8158-0030	04, 02, 2016
<input type="checkbox"/>	8-Wire ISN CAT6	NTFM 8158	Schwarzbeck Mess	8158-0029	08, 14, 2016
<input checked="" type="checkbox"/>	Electro wave Shieldroom	-	SEMITEC	-	-

Test Conditions

Temperature: 21.8 °C

Relative Humidity: 37,6 %

Frequency Range of Measurement

150 kHz to 30 MHz

Instrument Settings

IF Band Width: 9 kHz

Test Results

The requirements are:

- ☒ PASS
☐ NOT PASS
☐ NOT APPLICABLE

Remarks

See Appendix A for test data.



2.3 Radiated Electric Field Emissions(Below 1 GHz)

Test Date

Feb. 21, 2016

Test Location

☐ Open Area Test Site #1 ☒ Open Area Test Site #2

Test Equipment

Used	Description	Model Number	Manufacturer	Serial Number	Cal. Due
<input checked="" type="checkbox"/>	EMI Test Receiver	ESR3	R&S	101781	05, 06, 2016
<input checked="" type="checkbox"/>	Trilog-Broadband Antenna	VULB 9163	SCHWARZBECK	9168-713	05, 15, 2017
<input checked="" type="checkbox"/>	Open Area Test Site	-	KES	-	-
<input checked="" type="checkbox"/>	Antenna Mast	-	DAEIL EMC	-	-
<input checked="" type="checkbox"/>	Turn Table	-	DAEIL EMC	-	-

Test Conditions

Temperature: 7.3 °C
Relative Humidity: 58.0 %

Frequency Range of Measurement

30 MHz to 1 GHz

Instrument Settings

IF Band Width: 120 kHz

Test Results

The requirements are:

☒ PASS
☐ NOT PASS
☐ NOT APPLICABLE

Remarks

See Appendix A for test data.



2.4 Radiated Electric Field Emissions(Above 1 GHz)

Test Date

Feb. 18, 2016

Test Location

Semi Anchoic Chamber #2

Test Equipment

Used	Description	Model Number	Manufacturer	Serial Number	Cal. Due
<input checked="" type="checkbox"/>	EMI Test Receiver	ESU26	R&S	100552	05. 06. 2016
<input checked="" type="checkbox"/>	Broadband Coaxial Preamplifier	BBV 9718	Schwarzbeck Mess - Elektronik	9718-246	10. 23. 2016
<input checked="" type="checkbox"/>	DOUBLE RIDGED HORN ANTENNA	SAS-571	A.H.SYSTEM,INC	781	05. 07. 2017
<input checked="" type="checkbox"/>	Semi Anchoic Chamber #2	-	SEMITEC	-	-
<input checked="" type="checkbox"/>	Antenna Mast	-	AUDIX	-	-
<input checked="" type="checkbox"/>	Turn Table	-	AUDIX	-	-

Test Conditions

Temperature: 25.7 °C
Relative Humidity: 38.2 %

Frequency Range of Measurement

1 GHz to 6 GHz

Instrument Settings

IF Band Width: 1 MHz

Test Results

The requirements are:

- ☒ PASS
☐ NOT PASS
☐ NOT APPLICABLE

Remarks

See Appendix A for test data.

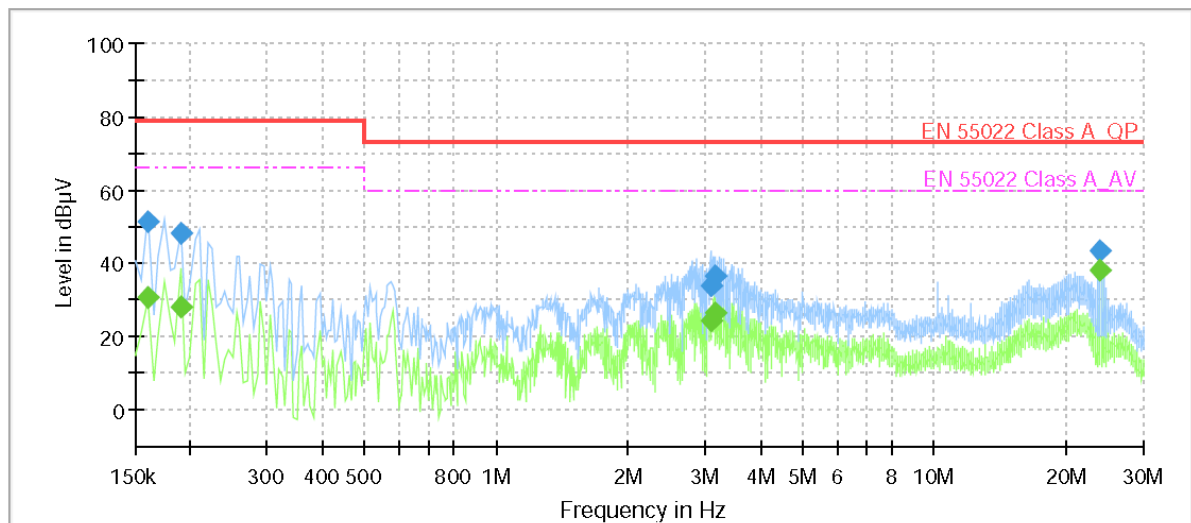
APPENDIX A – TEST DATA

Conducted Emissions at Mains Power Ports

[HOT]

Common Information

Test Description: Conducted Emission
Model No.: SRD-493P
Mode
Operator Name: KES



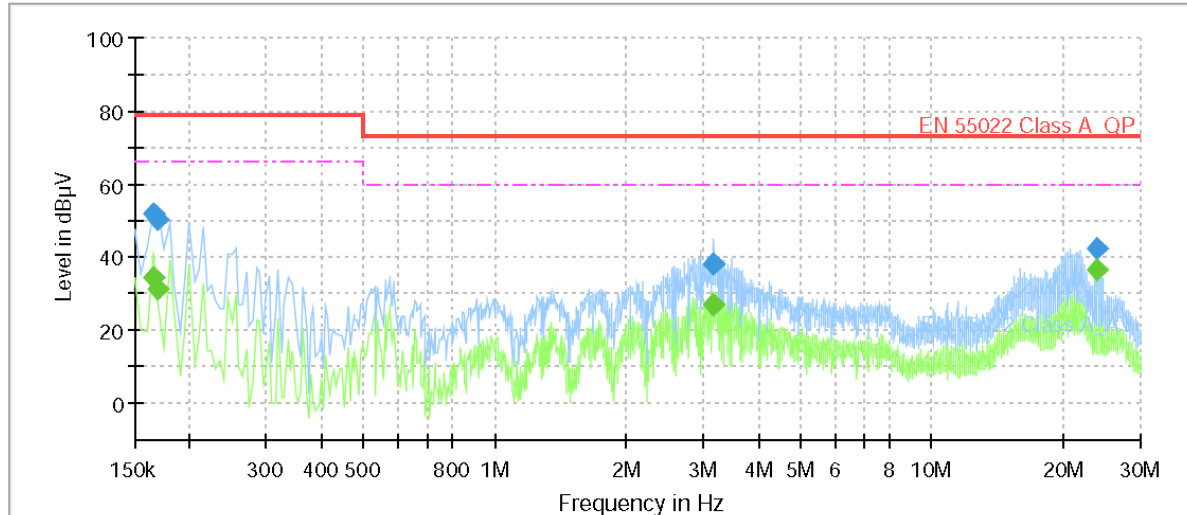
Final Result

Frequency (MHz)	QuasiPeak (dBµV)	CAverage (dBµV)	Limit (dBµV)	Margin (dB)	Meas. Time (ms)	Bandwidth (kHz)	Line	Corr. (dB)
0.160000	---	30.68	66.00	35.32	1000.0	9.000	L1	9.7
0.160000	51.36	---	79.00	27.64	1000.0	9.000	L1	9.7
0.190000	---	28.31	66.00	37.69	1000.0	9.000	L1	9.7
0.190000	47.91	---	79.00	31.09	1000.0	9.000	L1	9.7
3.080000	---	24.36	60.00	35.64	1000.0	9.000	L1	9.8
3.080000	34.03	---	73.00	38.97	1000.0	9.000	L1	9.8
3.145000	---	26.55	60.00	33.45	1000.0	9.000	L1	9.8
3.145000	36.35	---	73.00	36.65	1000.0	9.000	L1	9.8
23.980000	---	38.25	60.00	21.75	1000.0	9.000	L1	10.2
23.980000	43.46	---	73.00	29.54	1000.0	9.000	L1	10.2

[NEUTRAL]

Common Information

Test Description: Conducted Emission
Model No.: SRD-493P
Mode
Operator Name: KES



Final Result

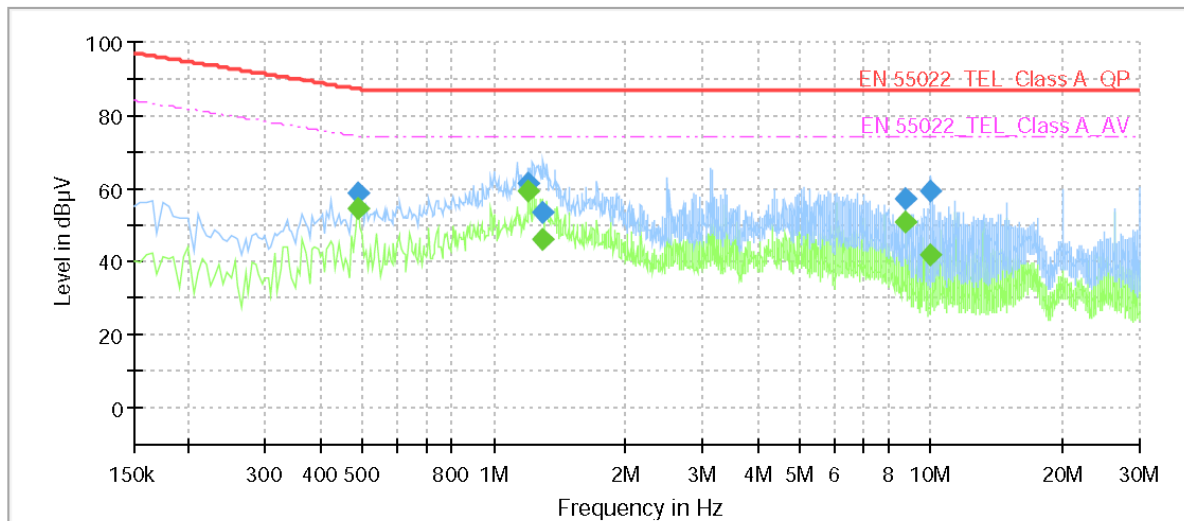
Frequency (MHz)	QuasiPeak (dBµV)	CAverage (dBµV)	Limit (dBµV)	Margin (dB)	Meas. Time (ms)	Bandwidth (kHz)	Line	Corr. (dB)
0.165000	---	34.34	66.00	31.66	1000.0	9.000	N	9.6
0.165000	51.70	---	79.00	27.30	1000.0	9.000	N	9.6
0.170000	---	31.27	66.00	34.73	1000.0	9.000	N	9.6
0.170000	50.28	---	79.00	28.72	1000.0	9.000	N	9.6
3.170000	---	27.18	60.00	32.82	1000.0	9.000	N	9.7
3.170000	37.87	---	73.00	35.13	1000.0	9.000	N	9.7
3.175000	---	27.07	60.00	32.93	1000.0	9.000	N	9.7
3.175000	37.97	---	73.00	35.03	1000.0	9.000	N	9.7
23.980000	---	36.48	60.00	23.52	1000.0	9.000	N	10.2
23.980000	42.49	---	73.00	30.51	1000.0	9.000	N	10.2

Conducted Emissions at Telecommunication Ports

[10 Mbps]

Common Information

Test Description:	Telecommunication Emission
Model No.:	SRD-493P
Mode	10 Mbps
Operator Name:	KES



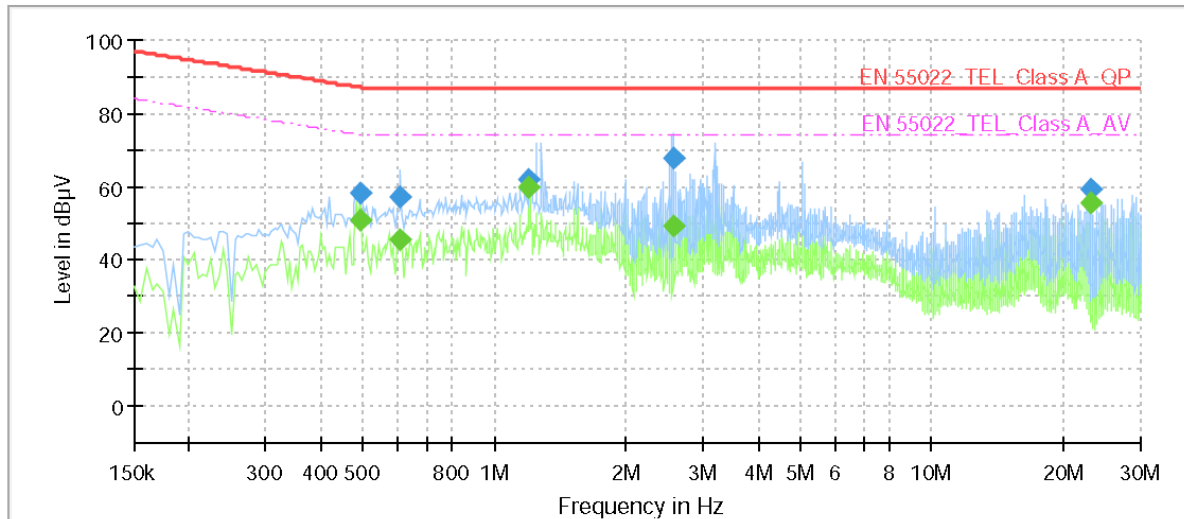
Final Result

Frequency (MHz)	QuasiPeak (dBµV)	CAverage (dBµV)	Limit (dBµV)	Margin (dB)	Meas. Time (ms)	Bandwidth (kHz)	Line	Corr. (dB)
0.490000	---	54.64	74.17	19.53	1000.0	9.000	Single Line	10.1
0.490000	58.99	---	87.17	28.18	1000.0	9.000	Single Line	10.1
1.200000	---	59.11	74.00	14.89	1000.0	9.000	Single Line	10.0
1.200000	61.48	---	87.00	25.52	1000.0	9.000	Single Line	10.0
1.295000	---	46.06	74.00	27.94	1000.0	9.000	Single Line	10.0
1.295000	53.39	---	87.00	33.61	1000.0	9.000	Single Line	10.0
8.750000	---	50.67	74.00	23.33	1000.0	9.000	Single Line	10.0
8.750000	57.19	---	87.00	29.81	1000.0	9.000	Single Line	10.0
10.005000	---	41.69	74.00	32.31	1000.0	9.000	Single Line	10.0
10.005000	59.46	---	87.00	27.54	1000.0	9.000	Single Line	10.0

[100 Mbps]

Common Information

Test Description: Telecommunication Emission
Model No.: SRD-493P
Mode: 100 Mbps
Operator Name: KES



Final Result

Frequency (MHz)	QuasiPeak (dBμV)	CAverage (dBμV)	Limit (dBμV)	Margin (dB)	Meas. Time (ms)	Bandwidth (kHz)	Line	Corr. (dB)
0.495000	---	50.95	74.08	23.13	1000.0	9.000	Single Line	9.6
0.495000	58.05	---	87.08	29.03	1000.0	9.000	Single Line	9.6
0.610000	---	45.66	74.00	28.34	1000.0	9.000	Single Line	9.6
0.610000	57.09	---	87.00	29.91	1000.0	9.000	Single Line	9.6
1.200000	---	59.57	74.00	14.43	1000.0	9.000	Single Line	9.5
1.200000	61.85	---	87.00	25.15	1000.0	9.000	Single Line	9.5
2.565000	---	49.33	74.00	24.67	1000.0	9.000	Single Line	9.4
2.565000	67.71	---	87.00	19.29	1000.0	9.000	Single Line	9.4
23.130000	---	55.56	74.00	18.44	1000.0	9.000	Single Line	9.6
23.130000	59.26	---	87.00	27.74	1000.0	9.000	Single Line	9.6



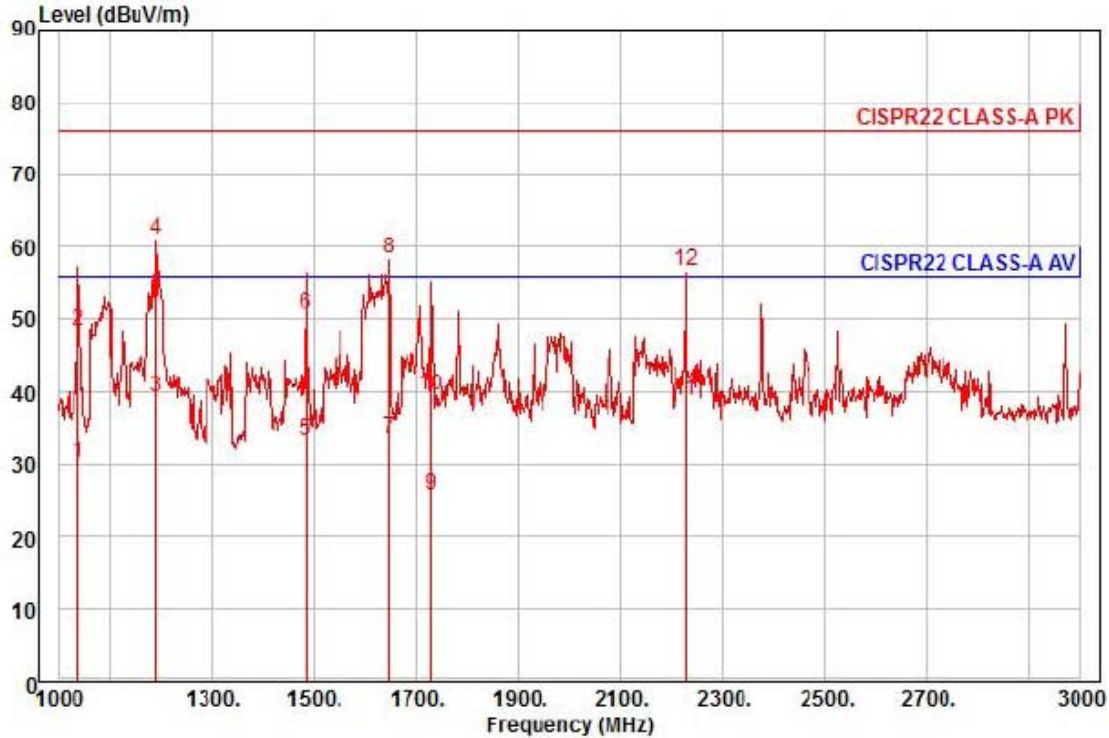
Radiated Electric Field Emissions(Below 1 GHz)

Frequency	Amplitude	ANT	ANT. Height	Correction Factor		Corrected Amplitude	Applicable Limit	Margin
[MHz]	[dB μ V]	Polar. (H/V)	[m]	ANT. [dB/m]	Cable [dB]	[dB μ V/m]	[dB μ V/m]	[dB]
149.24	24.19	H	4.00	8.17	2.77	35.13	40.00	4.87
283.05	23.68	H	4.00	13.05	4.07	40.80	47.00	6.20
295.69	15.21	V	1.20	13.30	4.17	32.68	47.00	14.32
446.07	21.17	H	4.00	16.34	5.37	42.88	47.00	4.12
519.72	18.30	H	3.90	17.53	5.86	41.69	47.00	5.31
594.34	17.72	H	3.50	19.18	6.29	43.19	47.00	3.81
742.70	16.10	H	2.00	20.17	7.43	43.70	47.00	3.30
891.19	12.63	V	1.90	22.02	8.15	42.80	47.00	4.20

* H : Horizontal, V : Vertical



Radiated Electric Field Emissions(Above 1 GHz)



Site : chamber
Condition: CISPR22 CLASS-A PK 3m HORN781(2015.05.07) horizontal
: RBW:1000.000kHz VBW:1000.000kHz SWT:Auto
Project :
Model : SRD-493P
Mode : 230 v / 50 Hz
Memo : 1 ~ 3 GHz

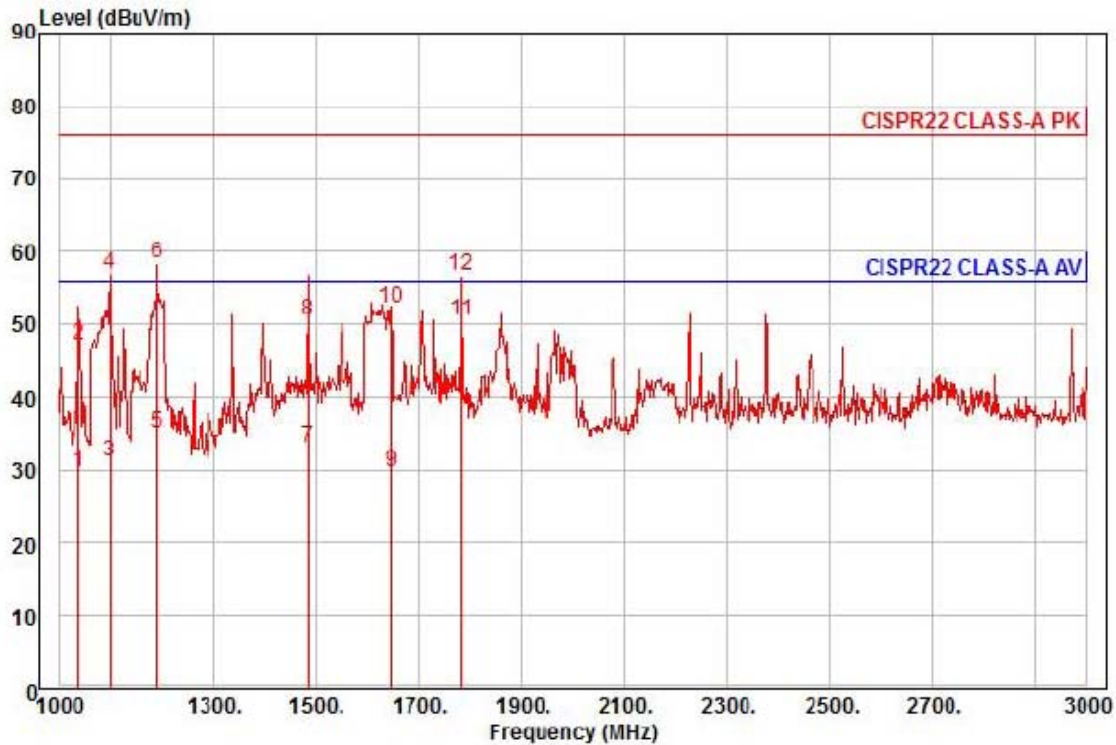
	Freq	Read Level	Ant Factor	Cable Loss	Preamp Factor	TPos	Limit Line	Over Limit	Pol/Phase	Remark
	MHz	dBuV	dB/m	dB	dB	deg	dBuV/m	dB		
1	1038.00	39.68	24.06	6.62	40.10	107	56.00	-25.74	horizontal	Average
2	1038.00	57.69	24.06	6.62	40.10	107	76.00	-27.73	horizontal	Peak
3 av	1190.00	47.62	24.66	7.06	40.03	53	56.00	-16.69	horizontal	Average
4 pp	1190.00	69.42	24.66	7.06	40.03	53	76.00	-14.89	horizontal	Peak
5	1484.00	39.37	25.83	7.91	39.88	41	56.00	-22.77	horizontal	Average
6	1484.00	56.93	25.83	7.91	39.88	41	76.00	-25.21	horizontal	Peak
7	1646.00	38.63	26.47	8.38	39.80	35	56.00	-22.32	horizontal	Average
8	1646.00	63.22	26.47	8.38	39.80	35	76.00	-17.73	horizontal	Peak
9	1730.00	30.01	26.81	8.61	39.76	93	56.00	-30.33	horizontal	Average
10	1730.00	43.86	26.81	8.61	39.76	93	76.00	-36.48	horizontal	Peak
11	2228.00	40.45	28.44	9.70	39.76	32	56.00	-17.17	horizontal	Average
12	2228.00	58.37	28.44	9.70	39.76	32	76.00	-19.25	horizontal	Peak



KES Co., Ltd.

C-3701, Simin-daero 365-40,
Dongan-gu, Anyang-si, Gyeonggi-do, 14057, Korea
Tel: +82-31-425-6200 / Fax: +82-31-424-0450
www.kes.co.kr

Test report No.:
KES-E1-16T0076
Page (23) of (34)



Site : chamber
Condition: CISPR22 CLASS-A PK 3m HORN781(2015.05.07) vertical
: RBW:1000.000kHz VBW:1000.000kHz SWT:Auto
Project :
Model : SRD-493P
Mode : 230 v / 50 Hz
Memo : 1 ~ 3 GHz

	Freq	Read Level	Ant Factor	Cable Loss	Preamp Factor	TPos	Limit Line	Over Limit	Pol/Phase	Remark
	MHz	dBuV	dB/m	dB	dB	deg	dBuV/m	dB		
1	1038.00	39.21	24.06	6.62	40.10	167	56.00	-26.21	vertical	Average
2	1038.00	56.43	24.06	6.62	40.10	167	76.00	-28.99	vertical	Peak
3	1098.00	40.03	24.30	6.79	40.07	14	56.00	-24.95	vertical	Average
4	1098.00	65.78	24.30	6.79	40.07	14	76.00	-19.20	vertical	Peak
5	1190.00	43.39	24.66	7.06	40.03	83	56.00	-20.92	vertical	Average
6 pk	1190.00	66.70	24.66	7.06	40.03	83	76.00	-17.61	vertical	Peak
7	1484.00	39.19	25.83	7.91	39.88	38	56.00	-22.95	vertical	Average
8	1484.00	56.76	25.83	7.91	39.88	38	76.00	-25.38	vertical	Peak
9	1646.00	34.71	26.47	8.38	39.80	357	56.00	-26.24	vertical	Average
10	1646.00	57.18	26.47	8.38	39.80	357	76.00	-23.77	vertical	Peak
11 pp	1782.00	54.54	27.01	8.75	39.74	127	56.00	-5.44	vertical	Average
12	1782.00	60.66	27.01	8.75	39.74	127	76.00	-19.32	vertical	Peak

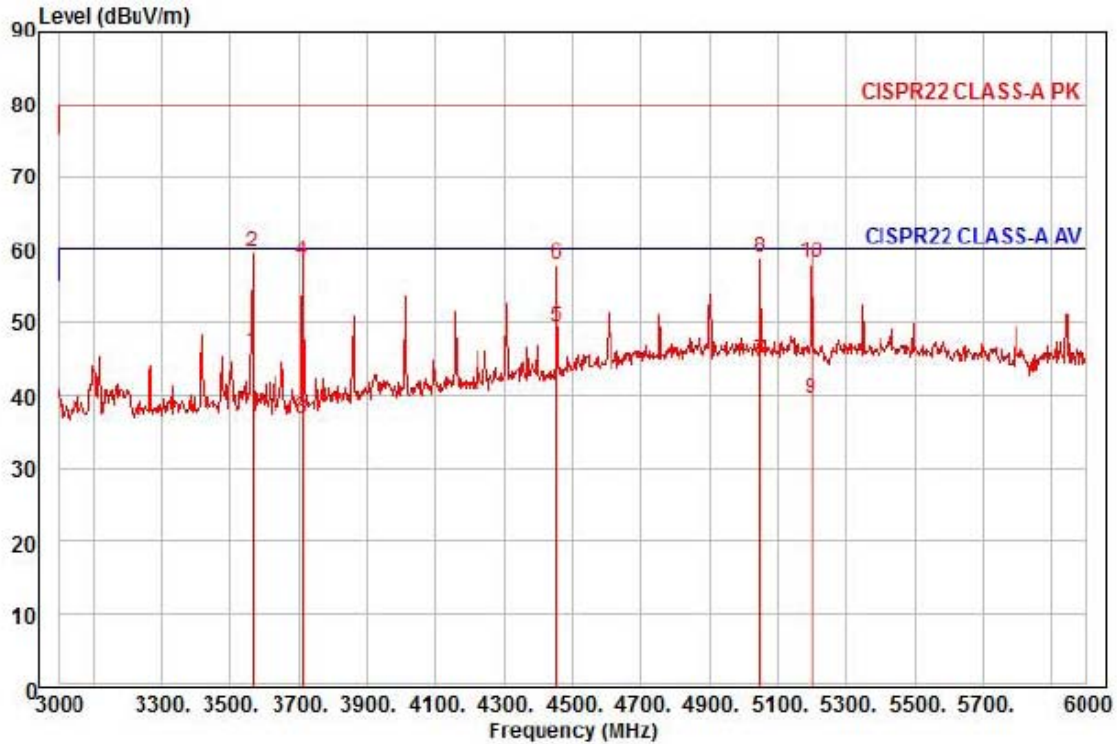
This report shall not be reproduced except in full, without the written approval of KES Co., Ltd.
The results shown in this test report refer only to the sample(s) tested unless otherwise stated.



KES Co., Ltd.

C-3701, Simin-daero 365-40,
Dongan-gu, Anyang-si, Gyeonggi-do, 14057, Korea
Tel: +82-31-425-6200 / Fax: +82-31-424-0450
www.kes.co.kr

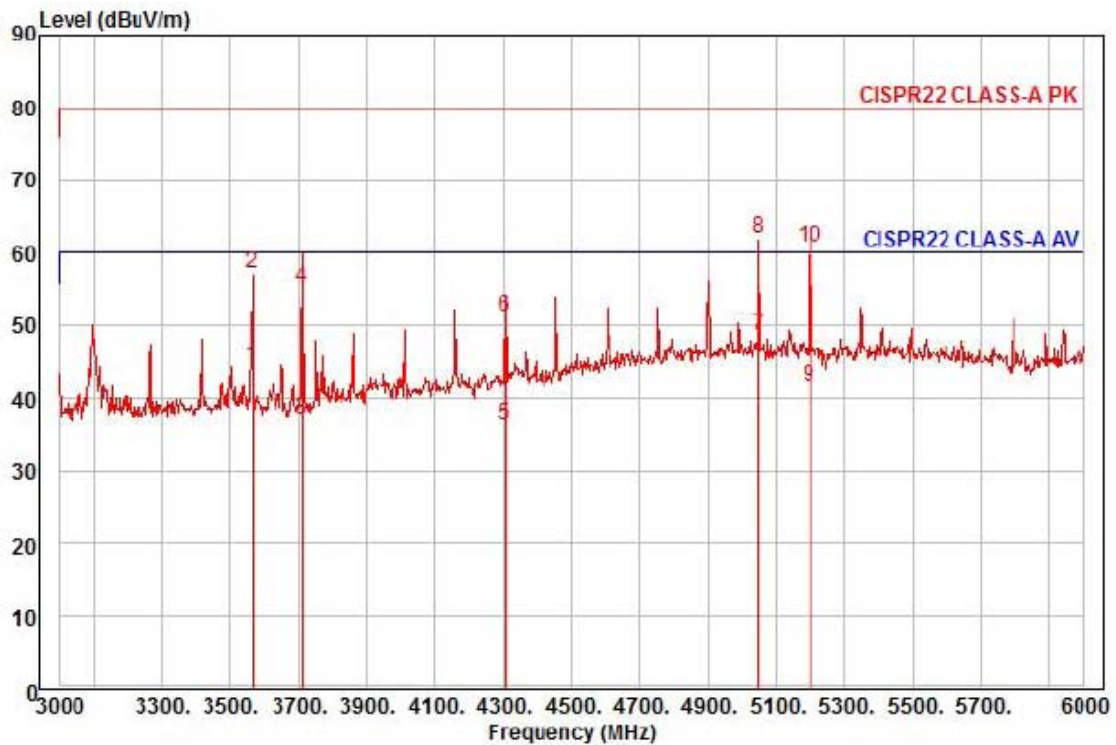
Test report No.:
KES-E1-16T0076
Page (24) of (34)



Site : chamber
Condition: CISPR22 CLASS-A PK 3m HORN781(2015.05.07) horizontal
: RBW:1000.000kHz VBW:1000.000kHz SWT:Auto
Project :
Model : SRD-493P
Mode : 230 v / 50 Hz
Memo : 3 ~ 6 GHz

	Freq	Read Level	Ant Factor	Cable Loss	Preamp Factor	TPos	Limit Line	Over Limit	Pol/Phase	Remark
	MHz	dBuV	dB/m	dB	dB	deg	dBuV/m	dB		
1	3564.00	42.30	31.28	12.64	40.32	23	60.00	-14.10	horizontal	Average
2 pk	3564.00	55.92	31.28	12.64	40.32	23	80.00	-20.48	horizontal	Peak
3	3711.00	32.73	31.52	12.93	40.35	32	60.00	-23.17	horizontal	Average
4	3711.00	54.23	31.52	12.93	40.35	32	80.00	-21.67	horizontal	Peak
5 pp	4455.00	40.63	34.61	14.35	40.41	4	60.00	-10.82	horizontal	Average
6	4455.00	49.40	34.61	14.35	40.41	4	80.00	-22.05	horizontal	Peak
7	5049.00	31.97	37.62	15.39	40.40	44	60.00	-15.42	horizontal	Average
8	5049.00	46.20	37.62	15.39	40.40	44	80.00	-21.19	horizontal	Peak
9	5199.00	26.98	37.32	15.56	40.38	46	60.00	-20.52	horizontal	Average
10	5199.00	45.64	37.32	15.56	40.38	46	80.00	-21.86	horizontal	Peak

This report shall not be reproduced except in full, without the written approval of KES Co., Ltd.
The results shown in this test report refer only to the sample(s) tested unless otherwise stated.



Site : chamber

Condition: CISPR22 CLASS-A PK 3m HORN781(2015.05.07) vertical

: RBW:1000.000kHz VBW:1000.000kHz SWT:Auto

Project :

Model : SRD-493P

Mode : 230 v / 50 Hz

Memo : 3 ~ 6 GHz

	Freq	Read Level	Ant Factor	Cable Loss	Preampl Factor	TPos	Limit Line	Over Limit	Pol/Phase	Remark
	MHz	dBuV	dB/m	dB	dB	deg	dBuV/m	dB		
1	3564.00	40.81	31.28	12.64	40.32	336	60.00	-15.59	vertical	Average
2	3564.00	53.59	31.28	12.64	40.32	336	80.00	-22.81	vertical	Peak
3	3711.00	33.00	31.52	12.93	40.35	359	60.00	-22.90	vertical	Average
4	3711.00	50.99	31.52	12.93	40.35	359	80.00	-24.91	vertical	Peak
5	4305.00	28.83	33.75	14.07	40.41	336	60.00	-23.76	vertical	Average
6	4305.00	43.80	33.75	14.07	40.41	336	80.00	-28.79	vertical	Peak
7 pp	5049.00	35.88	37.62	15.39	40.40	8	60.00	-11.51	vertical	Average
8 pk	5049.00	49.50	37.62	15.39	40.40	8	80.00	-17.89	vertical	Peak
9	5199.00	29.13	37.32	15.56	40.38	20	60.00	-18.37	vertical	Average
10	5199.00	48.25	37.32	15.56	40.38	20	80.00	-19.25	vertical	Peak

Test Setup Photos and Configuration

Conducted Voltage Emissions



This report shall not be reproduced except in full, without the written approval of KES Co., Ltd.
The results shown in this test report refer only to the sample(s) tested unless otherwise stated.

Conducted Telecommunication Emissions



This report shall not be reproduced except in full, without the written approval of KES Co., Ltd.
The results shown in this test report refer only to the sample(s) tested unless otherwise stated.

Radiated Electric Field Emissions(Below 1 GHz)



This report shall not be reproduced except in full, without the written approval of KES Co., Ltd.
The results shown in this test report refer only to the sample(s) tested unless otherwise stated.

Radiated Electric Field Emissions(Above 1 GHz)



This report shall not be reproduced except in full, without the written approval of KES Co., Ltd.
The results shown in this test report refer only to the sample(s) tested unless otherwise stated.

EUT External Photographs

(Top)



(Bottom)



This report shall not be reproduced except in full, without the written approval of KES Co., Ltd.
The results shown in this test report refer only to the sample(s) tested unless otherwise stated.

EUT Internal Photographs

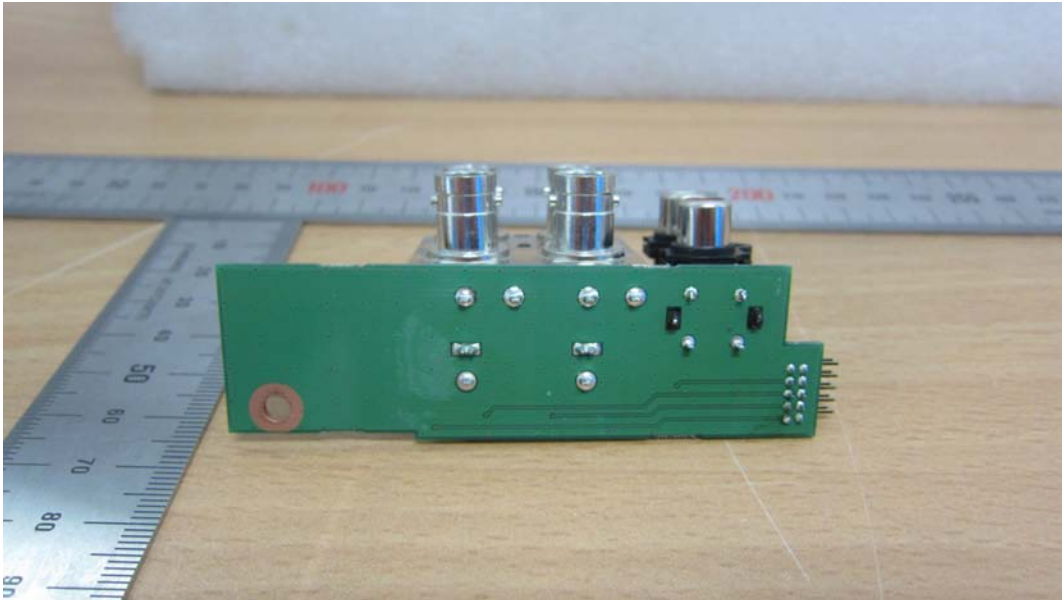
(Internal View)



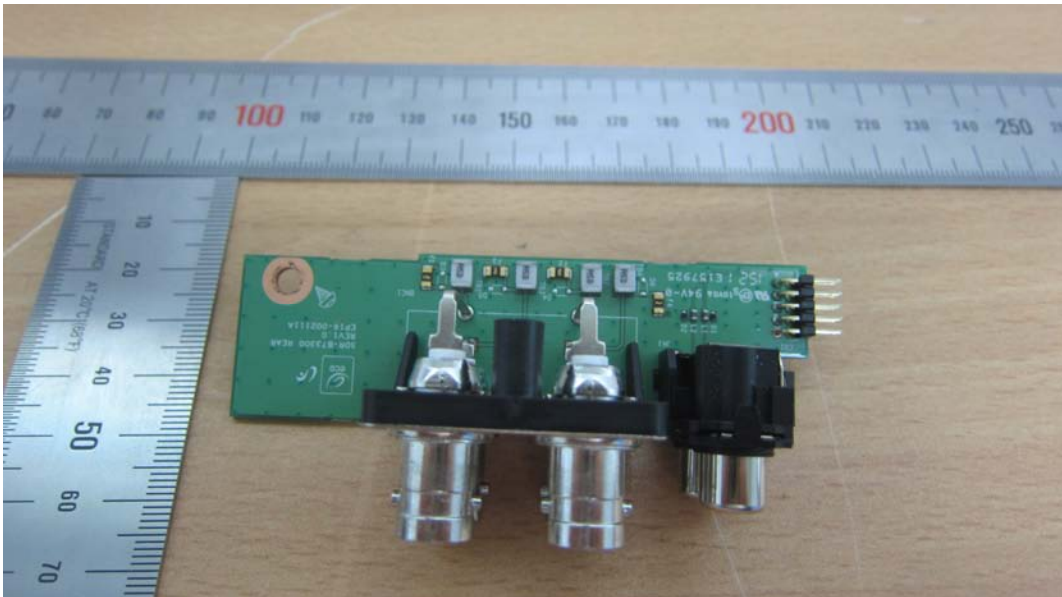
This report shall not be reproduced except in full, without the written approval of KES Co., Ltd.
The results shown in this test report refer only to the sample(s) tested unless otherwise stated.

Main Board EUT Internal View – Sub Board 1

(Top)



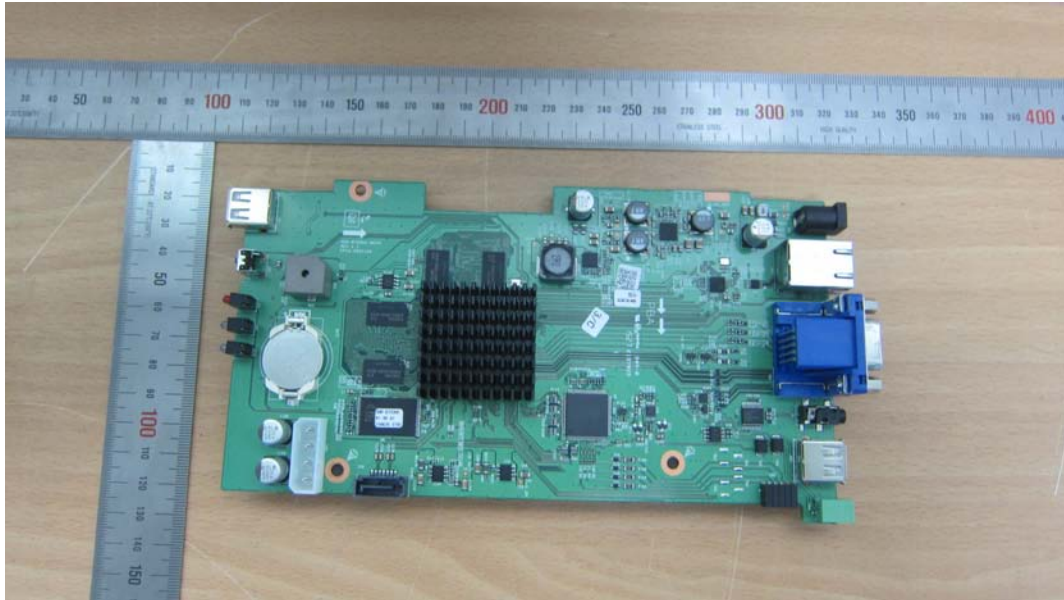
(Bottom)



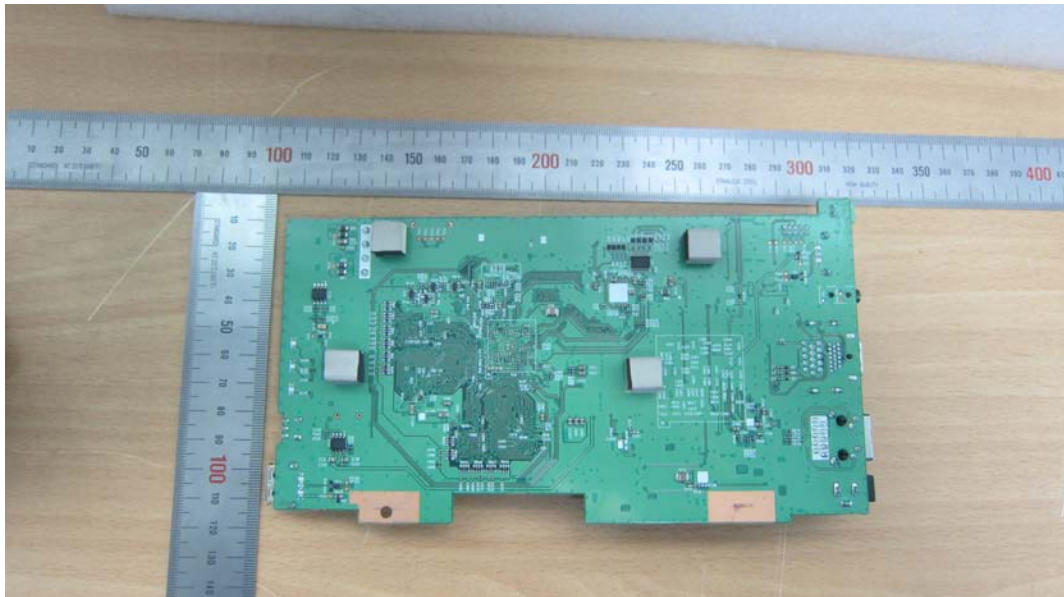
This report shall not be reproduced except in full, without the written approval of KES Co., Ltd.
The results shown in this test report refer only to the sample(s) tested unless otherwise stated.

Main Board EUT Internal View – Main Board

(Top)



(Bottom)



This report shall not be reproduced except in full, without the written approval of KES Co., Ltd.
The results shown in this test report refer only to the sample(s) tested unless otherwise stated.

Main Board EUT Internal View – HDD

(Top)



(Bottom)



This report shall not be reproduced except in full, without the written approval of KES Co., Ltd.
The results shown in this test report refer only to the sample(s) tested unless otherwise stated.