



EMC TEST REPORT For CE

Test Report No. : KES-E1-16T0257-R3

Date of Issue : May. 15, 2019

Product name : NETWORK CAMERA

Model/Type No. : QNV-6020R

Variant Model : QNV-6030R, QNV-6010R

Applicant : Hanwha Techwin Co., Ltd.

Applicant Address : 6, Pangyo-ro 319 Beon-gil, Bundang-gu, Seongnam-si,
Gyeonggi-do, 13488, KOREA

Manufacturer : 1. Hanwha Techwin (Tianjin) Co.,Ltd.
2. HANWHA TECHWIN SECURITY VIETNAM CO.,LTD.
3. D-TECH CO.,LTD.

Manufacturer Address : 1. No.11 Weiliu Rd, Micro-Electronic Industrial Park, TEDA, Tianjin,
300385, People's Republic of China
2. Lot O-2, Que Vo Industrial Zone extended area,
Nam Son commune, Bac Ninh city, Bac Ninh province, Vietnam
3. 173-25, Saneop-ro, Gwonseon-gu, Suwon-si, Gyeonggi-do,
Korea (Suwon Industrial Complex)

Date of Receipt : May. 23, 2016

Test date : May. 26, 2016 – Jun. 02, 2016

Test Results : ☒ **In Compliance** ☐ **Not in Compliance**

Tested by

Dae Jung, Choi
EMC Test Engineer

Reviewed by

Dong-Hun, Jang
EMC Technical Manager

This test report is not related to KOLAS.



KES Co., Ltd.

3701, 40, Simin-daero 365beon-gil,
Dongan-gu, Anyang-si, Gyeonggi-do, 14057, Korea
Tel: +82-31-425-6200 / Fax: +82-31-424-0450
www.kes.co.kr

Test report No.:
KES-E1-16T0257-R3
Page (2) of (77)

REPORT REVISION HISTORY

Date	Test Report No.	Revision History
Jun. 14, 2016	KES-E1-16T0257	Issued
Jun. 22, 2017	KES-E1-16T0257-R1	Changed manufacturer and Updated standards
Jun. 27, 2018	KES-E1-16T0239-R2	Re-issue due to manufacturer change
May. 15, 2019	KES-E1-16T0257-R3	Changed customer's address, factory addition, variant model addition and application standard due to customer request.

This report shall not be reproduced except in full, without the written approval of KES Co., Ltd. This document may be altered or revised by KES Co., Ltd. personnel only, and shall be noted in the revision section of the document. Any alteration of this document not carried out by KES Co., Ltd. will constitute fraud and shall nullify the document.

This report shall not be reproduced except in full, without the written approval of KES Co., Ltd.
The results shown in this test report refer only to the sample(s) tested unless otherwise stated.
The authenticity of the test report, contact shchoi@kes.co.kr

TABLE OF CONTENTS

1.0	General Product Description	4
1.1	Test Voltage & Frequency	6
1.2	Variant Model Differences	6
1.3	Device Modifications	6
1.4	Equipment Under Test	6
1.5	Support Equipments	6
1.6	External I/O Cabling	7
1.7	E.U.T Operating Mode(s)	7
1.8	Configuration	8
1.9	Calibration Details of Equipment Used for Measurement	9
1.10	Test Facility	9
1.11	Laboratory Accreditations and Listings	9
2.0	Test Regulations	10
2.1	Conducted Emissions at Mains Power Ports	12
2.2	Conducted Emissions at Telecommunication Ports	13
2.3	Radiated Electric Field Emissions(Below 1 GHz)	14
2.4	Radiated Electric Field Emissions(Above 1 GHz)	15
2.5	Harmonic Current Emissions	16
2.6	Voltage Fluctuations and Flicker	17
3.0	Criteria for compliance	18
3.1	Electrostatic Discharge	20
3.2	Radiated Electric Field Immunity	24
3.3	Electrical Fast Transients/Bursts	27
3.4	Surge Transients	29
3.5	Conducted Disturbance	32
3.6	Voltage Dips and Short Interruptions	35
APPENDIX A – TEST DATA		37
	Conducted Emissions at Mains Power Ports	37
	Conducted Emissions at Telecommunication Ports	39
	Radiated Electric Field Emissions(Below 1 GHz)	43
	Radiated Electric Field Emissions(Above 1 GHz)	44
	Harmonic Current Emissions and Voltage Fluctuations and Flicker	52
	Test Setup Photos and Configuration	55
	Conducted Voltage Emissions	55
	Conducted Telecommunication Emissions	56
	Radiated Electric Field Emissions(Below 1 GHz)	58
	Radiated Electric Field Emissions(Above 1 GHz)	60
	Harmonic Current Emissions and Voltage Fluctuations and Flicker	62
	Electrostatic Discharge	63
	Radiated Electric Field Immunity	64
	Electrical Fast Transients/Bursts	65
	Surge Transients	67
	Conducted Disturbance	68
	Voltage Dips and Short Interruptions	70
	EUT External Photographs	71
	EUT Internal Photographs	72



1.0 General Product Description

Main Specifications of E.U.T are:

Video	
Imaging Device	1/2.9" 2.19M CMOS
Total Pixels	2,000(H) x 1,121(V)
Effective Pixels	1,984(H) x 1,105(V)
Scanning System	Progressive
Min. Illumination	Color : 0.15Lux, B/W : 0Lux
Lens	
Focal Length (Zoom Ratio)	Fixed 3.6mm
Max. Aperture Ratio	F1.8
Angular Field of View	H 86.48° / V 46.22° / D 102.44°
Min. Object Distance	-
Lens Type	Fixed
Mount Type	Board type
Pan / Tilt / Rotate	
Pan Range	0~350°
Tilt Range	0~67°
Rotate Range	0~355°
Operational	
IR Viewable Length	30m
Camera Title	Off / On (Displayed up to 20 characters per line) - W/W : English/Numeric/Special Characters - China : English/Numeric/Special/Chinese Characters - Common : Multi-line (Max 5), Color (Grey/Green/Red/Blue/Black/White), Transparency, Auto Scale by Resolution
Day & Night	True Day & Night
Backlight Compensation	Off / BLC
Wide Dynamic Range	120dB
Digital Noise Reduction	SSNR(Off / On)
Motion Detection	Off / On (4ea polygon zones)
Privacy Masking	Off / On (6ea rectangler zones)
Gain Control	Off / Low / Middle / High
White Balance	ATW / AWC / Manual / Indoor / Outdoor
LDC(Lens distortion control)	On/Off (5 levels with Min/Max)
Electronic Shutter Speed	Minimum / Maximum / Anti flicker
Flip / Mirror	Flip / Mirror / Hallway view
Intelligent Video Analytics	Motion Detection with metadata, Tampering, Defocus
Alarm I/O	Input 1 / Output 1
Alarm Triggers	Motion detection, Tampering Detection, SD card error, NAS error, Alarm input, Defocus detection
Alarm Events	File upload via FTP and E-Mail Local storage recording at Event Notification via E-Mail External output

This report shall not be reproduced except in full, without the written approval of KES Co., Ltd.
The results shown in this test report refer only to the sample(s) tested unless otherwise stated.
The authenticity of the test report, contact shchoi@kes.co.kr



KES Co., Ltd.

3701, 40, Simin-daero 365beon-gil,
Dongan-gu, Anyang-si, Gyeonggi-do, 14057, Korea
Tel: +82-31-425-6200 / Fax: +82-31-424-0450
www.kes.co.kr

Test report No.:
KES-E1-16T0257-R3
Page (5) of (77)

Network	
Ethernet	RJ-45 (10/100BASE-T)
Video Compression Format	H.265, H.264, MJPEG
Resolution	1920x1080/ 1280x1024/ 1280x960/ 1280x720/ 1024x768/ 800x600/ 720x576/ 720x480/ 640x480/ 320x240
Max. Framerate	H.265 : Max 30fps at all resolutions H.264 : Max 30fps at all resolutions MJPEG : Max 15fps @ all resolution.
Smart codec	Wise Stream
Video Quality Ajustment	H.265 : Target Bitrate Level Control H.264 : Target Bitrate Level Control MJPEG : Quality Level Control
Bitrate control method	H.265 : CBR or VBR H.264 : CBR or VBR MJPEG : VBR
Streaming Capability	Multiple Streaming(Up to 3 Profiles)
Audio I/O	Line in
Audio Compression Format	G.711 u-law /G.726 Selectable G.726(ADPCM) : 8KHz, G.711 : 8KHz G.726 : 16Kbps, 24Kbps, 32Kbps, 40Kbps
Audio Communication	Uni-directional
IP	IPv4, IPv6
Protocol	TCP/IP, UDP/IP, RTP(UDP), RTP(TCP), RTCP,RTSP, NTP, HTTP, HTTPS, SSL/TSL, DHCP, PPPoE, FTP, SMTP, ICMP, IGMP, SNMPv1/v2c/v3(MIB-2), ARP, DNS, DDNS, QoS, PIM-SM, UPnP, Bonjour
Security	HTTPS(SSL) Login Authentication Digest Login Authentication IP Address Filtering User access Log 802.1X Authentication
Streaming Method	Unicast / Multicast
Max. User Access	6 users at Unicast Mode
Edge storage	Micro SD/SDHC/SDXC Max 128G, NAS - Motion images recorded in the SD memory card can be downloaded - Manual recording at Local PC
Application Programming Inte	ONVIF Profile S, G SUNAPI(HTTP API)
Webpage Language	English, French, German, Spanish, Italian, Chinese, Korean, Russian, Japanese, Swedish, Denish, Portuguese, Turkish, Polish, Czech, Rumanian, Serbian, Dutch, Croatia, Hungary, Greek, Finnish, Norwegian
Web Viewer	Supported OS: Windows 7, 8, 10, Mac OS X 10.8. 10.9. 10.10. 10.11 [Non-plugin Webviewer] Supported Browser: Google Chrome 47, MS Edge 20 Support Codec : Video-H.264, MJPEG (Max. 1M 15fps), Audio-G.711 [Plug-in Webviewer] Supported Browser : MS Explore 11 , Mozilla Firefox 43, Apple Safari 9 * Mac OS X only
Central Management Software	SmartViewer
Pixel Counter	Support (plug-in viewer only)
Environmental	
Operating Temperature / Hum	-30°C ~ +55°C / Less than 90% RH * Start up should be done at above -20°C
Storage Temperature / Humid	-30°C ~ +60°C (-22°F ~ +140°F) / Less than 90% RH
Ingress Protection	IP66
Vandal Resistance	IK10
Electrical	
Input Voltage / Current	PoE(IEEE802.3af, Class3), DC 12V
Power Consumption	Max.6.8W(PoE), Max.5.7W(DC12V)
Mechanical	
Color / Material	Ivory / Metal
Dimension (WxHxD)	φ120 x H92
Weight	490g

This report shall not be reproduced except in full, without the written approval of KES Co., Ltd.
The results shown in this test report refer only to the sample(s) tested unless otherwise stated.
The authenticity of the test report, contact shchoi@kes.co.kr

1.1 Test Voltage & Frequency

Unless indicated otherwise on the individual data sheet or test results, the test voltage and frequency was as indicated below.

Voltage ☐ 220 Vac ☐ 230 Vac ☐ 240 Vac ☒ PoE ☒ 12 Vdc
Frequency ☐ 50 Hz ☐ 60 Hz ☐ Hz

1.2 Variant Model Differences

Variant Model	Differences
QNV-6030R	Focus Length differences
QNV-6010R	

1.3 Device Modifications

Not applicable

1.4 Equipment Under Test

Description	Model Number	Serial Number	Manufacturer	Remarks
NETWORK CAMERA	QNV-6020R	-	Hanwha Techwin(Tianjin) Co., Ltd.	E.U.T

1.5 Support Equipments

Description	Model Number	Serial Number	Manufacturer	Remarks
Notebook	X56K	HN11N5151FJ0045W	Hansung Corp.	-
AC/DC ADAPTER	A12-120P1A	F180271552011758	CHICONY POWER TECHNOLOGY CO.,LTD.	-
PoE	PD3001GC/AC	RD9356082016964200	Power Dsine	-
Mike	CMK-303	-	CAMAC	-
Alarm	-	-	-	-

1.6 External I/O Cabling

- DC 12 V Mode

Start		END		Cable Spec.	
Description	I/O Port	Description	I/O Port	Length	Shield
NETWORK CAMERA (E.U.T)	RJ-45	Notebook	RJ-45	5.0	U
	Alarm	Alarm	Alarm	3.5	U
	mic	Mike	mic	2.0	U

- PoE Mode

Start		END		Cable Spec.	
Description	I/O Port	Description	I/O Port	Length	Shield
NETWORK CAMERA (E.U.T)	RJ-45	PoE	RJ-45	5.0	U
	Alarm	Alarm	Alarm	3.5	U
	mic	Mike	mic	2.0	U
PoE	RJ-45	Notebook	RJ-45	5.0	U

* Unshielded=U, Shielded=S

1.7 E.U.T Operating Mode(s)

Equipment under test was operated during the measurement under the following conditions:

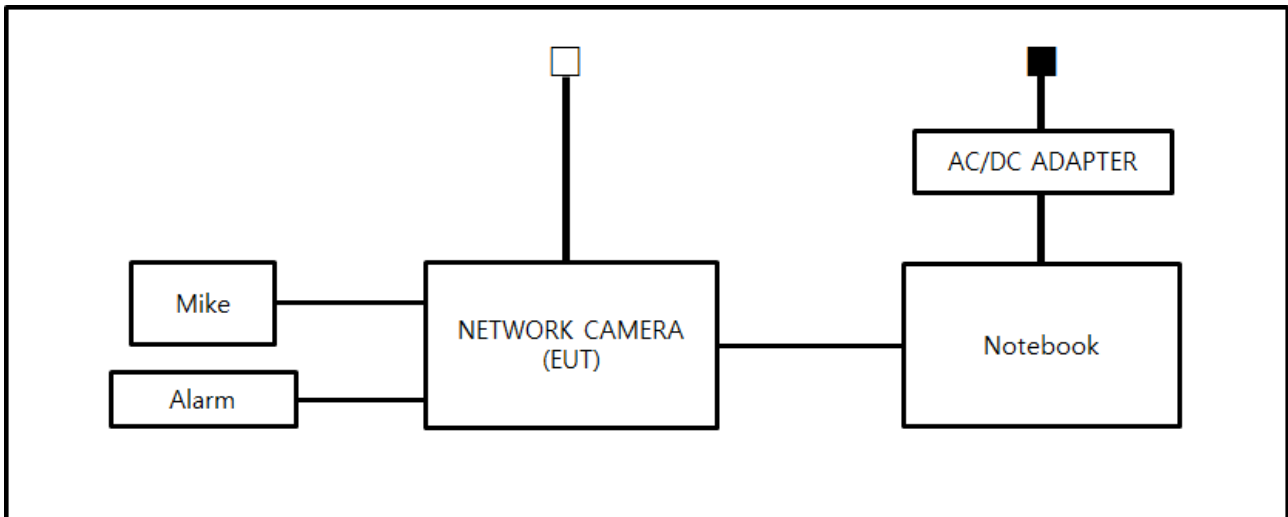
Test mode	Normal operating
OP	MONITORING Network ping test

- Input power condition during the measurements was 12 V (dc) , PoE

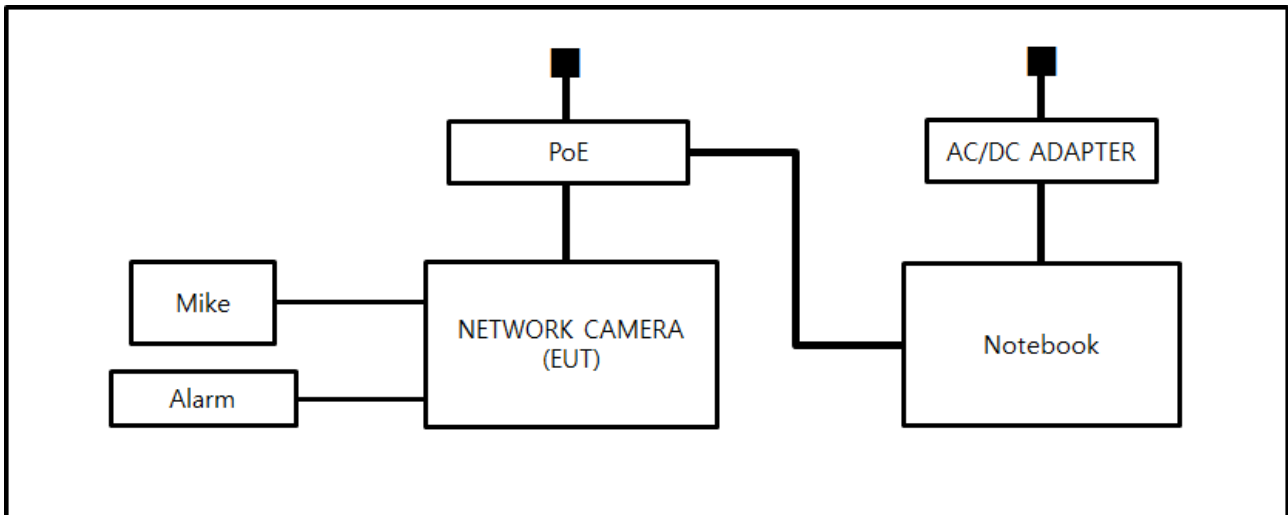
1.8 Configuration

■ AC Main
 □ DC Main

- DC 12 V Mode



- PoE Mode









1.9 Calibration Details of Equipment Used for Measurement

Test equipment and test accessories are calibrated on regular basis. The maximum time between calibrations is one year or what is recommended by the manufacturer, whichever is less.

1.10 Test Facility

The measurement facility is located at 473-21 Gayeo-ro, Yeosu-si, Gyeonggi-do, 12658, Korea. The sites are constructed in conformance with the requirements of ANSI C63.4:2014 and CISPR 16-1-4:2012

1.11 Laboratory Accreditations and Listings

Country	Agency	Scope of Accreditation	Logo
KOREA	RRA	EMI (3 m & 10 m Semi-Anechoic Chamber , 10 m Open Area and conducted test site) EMS (ESD, RS, EFT/Burst, Surge, CS, Magnetic, Dips and interruptions)	 KR0100
International	KOLAS	EMI (3 m & 10 m Semi-Anechoic Chamber , and conducted test site) EMS (ESD, RS, EFT/Burst, Surge, CS, Magnetic, Dips and interruptions)	 KT489
USA	FCC	3 m & 10 m Semi-Anechoic Chamber, 10 m Open Area and Conducted test site to perform FCC Part 15/18 measurements.	 KR0100
Canada	ISED	3 m & 10 m Semi-Anechoic Chamber and Conducted test site	 23298-1
JAPAN	VCCI	Mains Ports Conducted Interference Measurement, Telecommunication Ports Conducted Disturbance Measurement and Radiation 10 meter site, Facility for measuring radiated disturbance above 1 GHz	 R-4308, C-4798, T-2311, G-914
Europe	TÜV SÜD	EMI (3 m & 10 m Semi-Anechoic Chamber , 10 m Open Area and conducted test site) EMS (ESD, RS, EFT/Burst, Surge, CS, Magnetic, Dips and interruptions)	 CARAT 17 07 01633 001

2.0 Test Regulations

The emissions tests were performed according to following regulations:

☒ **EMC – Directive 2014/30/EU**

☐ EN 61000-6-3:2011

☐ EN 61000-6-1:2007

☐ EN 61000-6-4:2007 +A1:2011

☐ EN 61000-6-2:2005

☐ EN 55011:2007 +A1:2010

☐ Group 1
☐ Class A

☐ Group 2
☐ Class B

☐ EN 55014-1:2006 +A2:2011

☐ EN 55014-2:1997 +A2:2008

☐ EN 55015:2013

☒ EN 55032:2012/AC:2013

☒ Class A

☐ Class B

☐ EN 55024:2010

☒ EN 50130-4:2011 +A1:2014

☐ EN 61000-3-2:2014

☐ EN 61000-3-3:2013

☐ EN 61326-1:2013

☐ VCCI V-3 / 2013.04

☐ Class A

☐ Class B

☐ AS / NZS CISPR22:2009 +A1:2010

☐ Class A

☐ Class B

☐ 47 CFR Part 15, Subpart B / ANSI C63.4-2009

☐ Class A

☐ Class B

☐ IC Regulation ICES-003 : 2012
/ ANSI C63.4-2014

☐ Class A

☐ Class B

☐ CISPR 22:2009 +A1:2010

☐ Class A

☐ Class B



KES Co., Ltd.

3701, 40, Simin-daero 365beon-gil,
Dongan-gu, Anyang-si, Gyeonggi-do, 14057, Korea
Tel: +82-31-425-6200 / Fax: +82-31-424-0450
www.kes.co.kr

Test report No.:
KES-E1-16T0257-R3
Page (11) of (77)

☐ **R&TTE – Directive 1999/5/EC**

☐ EN 301 489-1 V1.9.2

- ☐ Equipment for fixed use
- ☐ Equipment for vehicular use
- ☐ Equipment for portable use

☐ EN 301 489-3 V1.6.1

☐ EN 301 489-17 V2.2.1

☐ EN 60945:2002

This report shall not be reproduced except in full, without the written approval of KES Co., Ltd.
The results shown in this test report refer only to the sample(s) tested unless otherwise stated.
The authenticity of the test report, contact shchoi@kes.co.kr

2.1 Conducted Emissions at Mains Power Ports

Test Date

N/A

Test Location

Electro wave Shieldroom

Test Equipment

Used	Description	Model Number	Manufacturer	Serial Number	Cal. Due
<input type="checkbox"/>	EMI Test Receiver	ESR3	R&S	101783	05, 03, 2017
<input type="checkbox"/>	LISN	ENV216	R&S	101137	02, 04, 2017
<input type="checkbox"/>	LISN	ENV216	R&S	101786	05, 02, 2017
<input type="checkbox"/>	Electro wave Shieldroom	-	SEMITEC	-	-

Test Conditions

Temperature: °C

Relative Humidity: %

Frequency Range of Measurement

150 kHz to 30 MHz

Instrument Settings

IF Band Width: 9 kHz

Test Results

The requirements are:

- ☐ PASS
☐ NOT PASS
☒ NOT APPLICABLE

Remarks

Because the E.U.T power is 12 V (dc) power and PoE, limits are not specified.

2.2 Conducted Emissions at Telecommunication Ports

Test Date

May. 26, 2016

Test Location

Electro wave Shieldroom

Test Equipment

Used	Description	Model Number	Manufacturer	Serial Number	Cal. Due
<input checked="" type="checkbox"/>	EMI Test Receiver	ESR3	R&S	101783	05, 03, 2017
<input checked="" type="checkbox"/>	LISN	ENV216	R&S	101137	02, 04, 2017
<input checked="" type="checkbox"/>	LISN	ENV216	R&S	101786	05, 02, 2017
<input checked="" type="checkbox"/>	8-Wire ISN CAT3	CAT3 8158	Schwarzbeck Mess	8158-0019	04, 01, 2017
<input checked="" type="checkbox"/>	8-Wire ISN CAT5	CAT5 8158	Schwarzbeck Mess	8158-0030	04, 01, 2017
<input type="checkbox"/>	8-Wire ISN CAT6	NTFM 8158	Schwarzbeck Mess	8158-0029	08, 14, 2016
<input checked="" type="checkbox"/>	Electro wave Shieldroom	-	SEMITEC	-	-

Test Conditions

Temperature: 23,7 °C

Relative Humidity: 51,5 %

Frequency Range of Measurement

150 kHz to 30 MHz

Instrument Settings

IF Band Width: 9 kHz

Test Results

The requirements are:

- ☒ PASS
☐ NOT PASS
☐ NOT APPLICABLE

Remarks

See Appendix A for test data.



2.3 Radiated Electric Field Emissions(Below 1 GHz)

Test Date

May. 30, 2016

Test Location

☐ Open Area Test Site #1 ☒ Open Area Test Site #2

Test Equipment

Used	Description	Model Number	Manufacturer	Serial Number	Cal. Due
<input checked="" type="checkbox"/>	EMI Test Receiver	ESR3	R&S	101781	05, 03, 2017
<input checked="" type="checkbox"/>	Trilog-Broadband Antenna	VULB 9163	SCHWARZBECK	9163-713	05, 15, 2017
<input checked="" type="checkbox"/>	Open Area Test Site	-	KES	-	-
<input checked="" type="checkbox"/>	Antenna Mast	-	DAEIL EMC	-	-
<input checked="" type="checkbox"/>	Turn Table	-	DAEIL EMC	-	-

Test Conditions

Temperature: 28,3 °C

Relative Humidity: 42,0 %

Frequency Range of Measurement

30 MHz to 1 GHz

Instrument Settings

IF Band Width: 120 kHz

Test Results

The requirements are:

☒ PASS
☐ NOT PASS
☐ NOT APPLICABLE

Remarks

See Appendix A for test data.

2.4 Radiated Electric Field Emissions(Above 1 GHz)

Test Date

May. 31, 2016

Test Location

Semi Anchoic Chamber #2

Test Equipment

Used	Description	Model Number	Manufacturer	Serial Number	Cal. Due
<input checked="" type="checkbox"/>	EMI Test Receiver	ESU26	R&S	100552	04, 24, 2017
<input checked="" type="checkbox"/>	Broadband Coaxial Preamplifier	BBV 9718	Schwarzbeck Mess - Elektronik	9718-246	10, 23, 2016
<input checked="" type="checkbox"/>	DOUBLE RIDGED HORN ANTENNA	SAS-571	A.H.SYSTEM,INC	781	05, 07, 2017
<input checked="" type="checkbox"/>	Semi Anchoic Chamber #2	-	SEMITEC	-	-
<input checked="" type="checkbox"/>	Antenna Mast	-	AUDIX	-	-
<input checked="" type="checkbox"/>	Turn Table	-	AUDIX	-	-

Test Conditions

Temperature: 26,4 °C
Relative Humidity: 48,5 %

Frequency Range of Measurement

1 GHz to 6 GHz

Instrument Settings

IF Band Width: 1 MHz

Test Results

The requirements are:

- ☒ PASS
☐ NOT PASS
☐ NOT APPLICABLE

Remarks
See Appendix A for test data.



2.5 Harmonic Current Emissions

Test Date

N/A

Test Location

Electro wave Shieldroom

Test Equipment

Used	Description	Model Number	Manufacturer	Serial Number	Cal. Due
<input type="checkbox"/>	AC Source	ACS 500 N	EM TEST	V1024106760	08, 13, 2016
<input type="checkbox"/>	Digital Power Analyzer	DPA 500 N	EM TEST	V1024106759	08, 13, 2016

Test Conditions

Temperature: °C
Relative Humidity: %

Classification of Equipment for Harmonic Current Emissions

- ☐ Class A
- ☐ Class B
- ☐ Class C(Below 25 W)
- ☐ Class C(Above 25 W)
- ☐ Class D

Test Results

The requirements are:

- ☐ PASS
- ☐ NOT PASS
- ☒ NOT APPLICABLE

Remarks

Because the E.U.T power is less than 75 W, limits are not specified.



2.6 Voltage Fluctuations and Flicker

Test Date

N/A

Test Location

Electro wave Shieldroom

Test Equipment

Used	Description	Model Number	Manufacturer	Serial Number	Cal. Due
<input type="checkbox"/>	AC Source	ACS 500 N	EM test	V1024106760	08, 13, 2016
<input type="checkbox"/>	Digital Power Analyzer	DPA 500 N	EM test	V1024106759	08, 13, 2016

Test Conditions

Temperature: °C
Relative Humidity: %

Test Results

The requirements are:

- ☐ PASS
☐ NOT PASS
☒ NOT APPLICABLE

Remarks

Because the E.U.T power is 12 V (dc) power and PoE.

3.0 Criteria for compliance

Criteria for compliance was based on the following guidelines:

EN 50130-4:2011 +A1:2014 Alarm systems-Part 4: Electromagnetic compatibility Product family standard: Immunity requirements for components of fire, intruder and social alarm systems

The variety and the diversity of the apparatus within the scope of this document makes it difficult to define precise criteria for the evaluation of the immunity test results.

If as a result of the application of the tests defined in this standard, the apparatus becomes dangerous or unsafe then the apparatus shall be deemed to have failed the test.

A functional description and a definition of performance by the manufacture and noted in the test report, based on the following criteria:

Electrostatic discharge

There shall be no damage, malfunction or change of status due to the conditioning.

Flickering of an indicator during the application of discharge is permissible, providing that is no residual change in the EUT or any change in outputs, which could be interpreted by associated equipment as a change.

Radiated electromagnetic fields

There shall be no damage, malfunction or change of status due to the conditioning.

Flickering of an indicator during the application of discharge is permissible, providing which could be interpreted by associated equipment as a change, and no such

Flickering of indicators occurs at a field strength of 3 V/m.

For components of CCTV systems, where the picture is allowed at 10 V/m, providing.

(a) there is no permanent damage or change to EUT

(e.g. no corruption of memory or changes to programmable setting etc.)

(b) at 3 V/m, any deterioration of the picture is so minor that the system could still be used; and

(c) there is no observable deterioration of the picture at 1 V/m.

Fast transient burst / slow high energy voltage surge

There shall be no damage, malfunction or change of status due to the conditioning.

Flickering of an indicator during the application of discharge is permissible, providing

That there is no residual is permissible, providing that there is no residual change in the EUT or any change in outputs, which could be interpreted by associated equipment as a change.

Conducted RF immunity

There shall be no damage, malfunction or change of status due to the conditioning.

Flickering of an indicator during the application of discharge is permissible, providing

That there is no residual is permissible, providing that there is no residual change in the EUT or any change in outputs, which could be interpreted by associated equipment as a change,
and no such flickering of indicators oeuvres at $U = 130 \text{ dB}\mu\text{V}$.

For component of CCTV systems, where the status is monitored by observing the TV picture,
then deterioration of the picture is allowed at $U = 140 \text{ dB}\mu\text{V}$, providing:

- (a) there is no permanent damage or change to the EUT
(e.g. no corruption of memory or changes to programmable settings etc.)
- (b) at $U = 130 \text{ dB}\mu\text{V}$, any deterioration of the picture is so minor that the system could still be used; and
- (c) there in no observable deterioration of the picture at $U = 120 \text{ dB}\mu\text{V}$.

Voltage dip/interruption / Voltage variation

There shall be no damage, malfunction or change of status due to the conditioning.

Flickering of an indicator during the conditioning is permissible, providing that there is no residual change in the EUT or any change in outputs, which could be interpreted by associated equipment as a change. The EUT shall meet the acceptance criteria for the functional test, after the conditioning.

3.1 Electrostatic Discharge

Reference Standard

EN 61000-4-2:2009

Test Date

May. 26, 2016

Test Location

EMS-ESD: Electro wave Shieldroom

Test Equipment

Used	Description	Model Number	Manufacturer	Serial Number	Cal. Due
<input checked="" type="checkbox"/>	ESD SIMULATOR	ESS-2000	Noise Ken	ESS05X4620	02, 24, 2017
<input checked="" type="checkbox"/>	HCP	-	Noise Ken	-	-
<input checked="" type="checkbox"/>	VCP	-	Noise Ken	-	-

Test Conditions

Temperature: 23,7 °C
Relative Humidity: 51,5 %
Atmospheric Pressure: 98,9 kPa

Test Specifications

Discharge Factor: ≥ 1 s

Discharge Impedance: 330 ohm / 150 pF

Kind of Discharge: Air, Contact (direct and indirect)

Polarity: Positive and Negative

Number of Discharge: 10 at all locations for Air discharge
10 at all locations for Contact discharge

Discharge Voltage:	Contact <input type="checkbox"/> 2 kV <input type="checkbox"/> 4 kV <input checked="" type="checkbox"/> 6 kV <input type="checkbox"/> 8 kV <input type="checkbox"/> 15 kV	Air <input checked="" type="checkbox"/> 2 kV <input checked="" type="checkbox"/> 4 kV <input type="checkbox"/> 6 kV <input checked="" type="checkbox"/> 8 kV <input type="checkbox"/> 15 kV	HCP <input type="checkbox"/> 2 kV <input type="checkbox"/> 4 kV <input checked="" type="checkbox"/> 6 kV <input type="checkbox"/> 8 kV <input type="checkbox"/> 15 kV	VCP <input type="checkbox"/> 2 kV <input type="checkbox"/> 4 kV <input checked="" type="checkbox"/> 6 kV <input type="checkbox"/> 8 kV <input type="checkbox"/> 15 kV
--------------------	---	---	---	---

Notes: HCP: Horizontal coupling plane
VCP: Vertical coupling plane

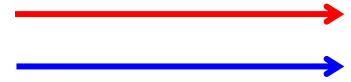
Required Performance Criteria: ☒ Complied

This report shall not be reproduced except in full, without the written approval of KES Co., Ltd.
The results shown in this test report refer only to the sample(s) tested unless otherwise stated.
The authenticity of the test report, contact shchoi@kes.co.kr

Location of Discharge:

- dc 12 V Mode

Air
Contact



1. Contact



2. Contact

This report shall not be reproduced except in full, without the written approval of KES Co., Ltd.
The results shown in this test report refer only to the sample(s) tested unless otherwise stated.
The authenticity of the test report, contact shchoi@kes.co.kr

- PoE Mode





Test Data

- 12 V (dc) Mode

Indirect Discharge

No.	Test Point	Discharge Method	Performance	Remarks
			Observation	
1	HCP Contact	Contact Discharge	Complied	-
2	VCP Contact	Contact Discharge	Complied	-

Direct Discharge

No.	Test Point	Discharge Method	Performance	Remarks
			Observation	
1	Enclosure 1	Contact Discharge	Complied	-
4	Enclosure 2	Contact Discharge	Complied	-

- PoE Mode

Indirect Discharge

No.	Test Point	Discharge Method	Performance	Remarks
			Observation	
1	HCP Contact	Contact Discharge	Complied	-
2	VCP Contact	Contact Discharge	Complied	-

Direct Discharge

No.	Test Point	Discharge Method	Performance	Remarks
			Observation	
1	Enclosure 1	Contact Discharge	Complied	-
4	Enclosure 2	Contact Discharge	Complied	-

Note: "Blank" = Not performed

Observations:

Complied – No degradation of function

Test Results

- ☒ PASS Required Performance Criteria
☐ NOT PASS Required Performance Criteria

Remarks

PASS Required Performance Criteria.

3.2 Radiated Electric Field Immunity

Reference Standard

EN 61000-4-3:2006 +A2:2010

Test Date

Jun. 01, 2016

Test Location

EMS-RS: ☐ Semi Anchoic Chamber #1 ☒ Semi Anchoic Chamber #2

Test Equipment

Used	Description	Model Number	Manufacturer	Serial Number	Cal. Due
<input checked="" type="checkbox"/>	SIGNAL GENERATOR	SMB 100A	R&S	108252	08, 13, 2016
<input checked="" type="checkbox"/>	BROADBAND AMPLIFIER	BBA100	R&S	101239	08, 13, 2016
<input checked="" type="checkbox"/>	BROADBAND AMPLIFIER	100S1G6M1	AR	579931	08, 13, 2016
<input checked="" type="checkbox"/>	POWER METER	NRP2	R&S	103475	08, 13, 2016
<input checked="" type="checkbox"/>	AVG POWER SENSOR	NRP-Z91	R&S	102526	08, 13, 2016
<input checked="" type="checkbox"/>	AVG POWER SENSOR	NRP-Z91	R&S	102527	08, 13, 2016
<input checked="" type="checkbox"/>	Stacked Log.-Per.Antenna	STLP 9128 D	Schwarzbeck	9128D038	-
<input checked="" type="checkbox"/>	DIRECTIONAL COUPLER	KYDC-D1070-DX40	KyTelecom Co., Ltd.	KY150001	09, 25, 2016
<input checked="" type="checkbox"/>	Semi Anchoic Chamber #2		SEMITEC	-	-

Test Conditions

Temperature: 26,9 °C
Relative Humidity: 47,1 %
Atmospheric Pressure: 98,5 kPa

**KES Co., Ltd.**

3701, 40, Simin-daero 365beon-gil,
Dongan-gu, Anyang-si, Gyeonggi-do, 14057, Korea
Tel: +82-31-425-6200 / Fax: +82-31-424-0450
www.kes.co.kr

Test report No.:

KES-E1-16T0257-R3

Page (25) of (77)

Test Specifications

Antenna Polarization: Horizontal & vertical unless indicated otherwise

Antenna Distance: ☒ 3 mField Strength: ☐ 1 V/m ☐ 3 V/m
☒ 10 V/mFrequency Range: ☐ 80 MHz to 1 GHz ☐ 1,4 GHz to 2,7 GHz
☒ 80 MHz to 2,7 GHzModulation: ☒ AM, 80 %, 1 kHz sine wave
☒ PM, 1 Hz (0,5 s ON : 0,5 s OFF)Frequency step: ☒ 1 % stepDwell Time: ☒ 1 s ☐ 3 s# of Sides Radiated: ☒ 4Required Performance Criteria: ☒ Complied**Test Data**

- 12 V (dc) Mode

Side Exposed	Observation	
	Horizontal	Vertical
Front	Complied	Complied
Right	Complied	Complied
Back	Complied	Complied
Left	Complied	Complied

This report shall not be reproduced except in full, without the written approval of KES Co., Ltd.
The results shown in this test report refer only to the sample(s) tested unless otherwise stated.
The authenticity of the test report, contact shchoi@kes.co.kr

**KES Co., Ltd.**

3701, 40, Simin-daero 365beon-gil,
Dongan-gu, Anyang-si, Gyeonggi-do, 14057, Korea
Tel: +82-31-425-6200 / Fax: +82-31-424-0450
www.kes.co.kr

Test report No.:
KES-E1-16T0257-R3
Page (26) of (77)

- PoE Mode

Side Exposed	Observation	
	Horizontal	Vertical
Front	Complied	Complied
Right	Complied	Complied
Back	Complied	Complied
Left	Complied	Complied

Note: "Blank" = Not performed

Observations:

Complied – No degradation of function

Test Results

- ☒ PASS Required Performance Criteria
☐ NOT PASS Required Performance Criteria

Remarks

PASS Required Performance Criteria.

This report shall not be reproduced except in full, without the written approval of KES Co., Ltd.
The results shown in this test report refer only to the sample(s) tested unless otherwise stated.
The authenticity of the test report, contact shchoi@kes.co.kr

3.3 Electrical Fast Transients/Bursts

Reference Standard

EN 61000-4-4:2012

Test Date

Jun. 02, 2016

Test Location

EMS-EFT: Electro wave Shieldroom

Test Equipment

Used	Description	Model Number	Manufacturer	Serial Number	Cal. Due
<input checked="" type="checkbox"/>	Ultra Compact Simulator	UCS 500 N5	EM TEST	V0936105120	07, 14, 2016
<input checked="" type="checkbox"/>	Capacitive Coupling Clamp	HFK	EM TEST	070925	07, 14, 2016
<input checked="" type="checkbox"/>	MotorVariac	MV2616	EM TEST	V0936105123	07, 14, 2016

Test Conditions

Temperature: 27,3 °C
Relative Humidity: 46,4 %
Atmospheric Pressure: 98,9 kPa

Test Specifications

Pulse Amplitude & Polarity: (Power Lines)	<input checked="" type="checkbox"/> ± 1.0 kV <input type="checkbox"/> ± 4.0 kV	<input type="checkbox"/> ± 2.0 kV
Pulse Amplitude & Polarity: (Signal Lines)	<input type="checkbox"/> ± 0.5 kV <input type="checkbox"/> ± 2.0 kV	<input checked="" type="checkbox"/> ± 1.0 kV
Burst Period:	<input checked="" type="checkbox"/> 300 ms	<input type="checkbox"/> 2 s
Repetition Rate:	<input type="checkbox"/> 5 kHz	<input checked="" type="checkbox"/> 100 kHz
Duration of Test Voltage:	<input checked="" type="checkbox"/> ≥ 1 min	
Required Performance Criteria:	<input checked="" type="checkbox"/> Complied	

Test Data

- 12 V (dc) Mode

☐ Input a.c. power ports – Coupling/Decoupling Network used

Mode of Application	OBSERVATIONS	
	(+) Burst (kV)	(-) Burst (kV)
-	-	-

☒ Input d.c. power ports – Coupling/Decoupling Network used

Mode of Application	OBSERVATIONS	
	(+) Burst (kV)	(-) Burst (kV)
L - N	Complied	Complied

☒ Signal ports and telecommunication ports – Coupling Clamp used

Mode of Application	OBSERVATIONS	
	(+) Burst (kV)	(-) Burst (kV)
LAN(RJ-45)	Complied	Complied
Alarm	Complied	Complied

- PoE Mode

☐ Input d.c. power ports – Coupling/Decoupling Network used

Mode of Application	OBSERVATIONS	
	(+) Burst (kV)	(-) Burst (kV)
-	-	-

☒ Signal ports and telecommunication ports – Coupling Clamp used

Mode of Application	OBSERVATIONS	
	(+) Burst (kV)	(-) Burst (kV)
LAN(PoE)	Complied	Complied
Alarm	Complied	Complied

Note: "Blank" = Not performed

Observations:
Complied – No degradation of function

Test Results

- ☒ PASS Required Performance Criteria
☐ NOT PASS Required Performance Criteria

Remarks

PASS Required Performance Criteria.

3.4 Surge Transients

Reference Standard

EN 61000-4-5:2014

Test Date

Jun. 02, 2016

Test Location

EMS-Surge: Electro wave Shieldroom

Test Equipment

Used	Description	Model Number	Manufacturer	Serial Number	Cal. Due
<input checked="" type="checkbox"/>	Ultra Compact Simulator	UCS 500 N5	EM TEST	V0936105120	07, 14, 2016
<input checked="" type="checkbox"/>	MotorVariac	MV2616	EM TEST	V0936105123	07, 14, 2016
<input checked="" type="checkbox"/>	CDN	CNV 508T5	EM TEST	P1549168422	04, 27, 2017

Test Conditions

Temperature: 27,3 °C
Relative Humidity: 46,4 %
Atmospheric Pressure: 98,9 kPa

Test Specifications

Power Lines

Source Impedance: 12 ohm for common mode and 2 ohm for differential mode

Surge Amplitude :

Common Mode
☐ (0,5 / 1,0 / 2,0) kV

Differential Mode
☐ (0,5 / 1,0) kV

Signal lines
☐ (0,5 / 1,0) kV

Number of Surges:

☐ 5 surges per angle

Angle:

☐ 0°, 90°, 180°, 270° (input a.c. power port)

Polarity:

☒ Positive & Negative

Repetition Rate:

☐ 1 surge per min ☐ 1 surge per 30 sec.

Required Performance Criteria: ☐ Complied

Signal Lines

Source Impedance: 42 ohm for common mode
Surge Amplitude: Common Mode
☒ (0,5 / 1,0) kV

Number of Surges: ☒ 5 Surges

Polarity: ☒ Positive & Negative

Repetition Rate: ☐ 1 surge per min ☒ 1 surge per 30 sec.

Required Performance Criteria: ☒ Complied

Test Data

- 12 V (dc) Mode

☐ Line to Line – Differential Mode

Mode of Application	OBSERVATIONS	
	(+) Surge (kV)	(-) Surge (kV)
-	-	-

☐ Line to Earth – Common Mode

Mode of Application	OBSERVATIONS	
	(+) Surge (kV)	(-) Surge (kV)
-	-	-

Signal Lines
☒ Line to Earth – Common Mode

Mode of Application	OBSERVATIONS	
	(+) Surge (kV)	(-) Surge (kV)
LAN(RJ-45)	Complied	Complied
Alarm	Complied	Complied

**KES Co., Ltd.**

3701, 40, Simin-daero 365beon-gil,
Dongan-gu, Anyang-si, Gyeonggi-do, 14057, Korea
Tel: +82-31-425-6200 / Fax: +82-31-424-0450
www.kes.co.kr

Test report No.:
KES-E1-16T0257-R3
Page (31) of (77)

- PoE Mode

☐ Line to Line – Differential Mode

Mode of Application	OBSERVATIONS	
	(+) Surge (kV)	(-) Surge (kV)
-	-	-

☐ Line to Earth – Common Mode

Mode of Application	OBSERVATIONS	
	(+) Surge (kV)	(-) Surge (kV)
-	-	-

Signal Lines

☒ Line to Earth – Common Mode

Mode of Application	OBSERVATIONS	
	(+) Surge (kV)	(-) Surge (kV)
LAN(PoE)	Complied	Complied
Alarm	Complied	Complied

Note: "Blank" = Not performed

Observations:

Complied – No degradation of function

Test Results

- ☒ PASS Required Performance Criteria
☐ NOT PASS Required Performance Criteria

Remarks

PASS Required Performance Criteria.

3.5 Conducted Disturbance

Reference Standard

EN 61000-4-6:2009

Test Date

May. 27, 2016

Test Location

EMS-CS: Electro wave Shieldroom

Test Equipment

Used	Description	Model Number	Manufacturer	Serial Number	Cal. Due
<input checked="" type="checkbox"/>	Continuous Wave Generator	CWS 500N1	EM TEST	V0936105119	09, 25, 2016
<input checked="" type="checkbox"/>	6dB Attenuator	ATT6	EM TEST	1208-34	08, 13, 2016
<input checked="" type="checkbox"/>	CDN	CDN-M2/M3N	EM TEST	0909-06	08, 13, 2016
<input type="checkbox"/>	CDN	CDN-T2-RJ11	EM TEST	0909-07	08, 13, 2016
<input type="checkbox"/>	CDN	CDN-T4	EM TEST	0909-08	08, 13, 2016
<input type="checkbox"/>	CDN	CDN-T8RJ45	EM TEST	0909-09	08, 13, 2016
<input type="checkbox"/>	CDN	CDN-AF2	EM TEST	0909-10	08, 13, 2016
<input type="checkbox"/>	CDN	CDN-AF4	EM TEST	0909-11	08, 13, 2016
<input checked="" type="checkbox"/>	EM Injection Clamp	EM 101	Liithi	35943	02, 04, 2017

Test Conditions

Temperature: 23,2 °C
Relative Humidity: 49,9 %
Atmospheric Pressure: 99,1 kPa

Test Specifications

- Frequency range: ☒ 150 kHz to 100 MHz ☐ 10 kHz to 30 MHz
☐ 150 kHz to 230 MHz ☐ 10 kHz to 100 MHz
- Voltage Level: ☐ 1 Vrms ☐ 3 Vrms
☒ 10 Vrms
- Modulation: ☒ AM, 80 %, 1 kHz sine wave
☒ PM, 1 Hz (0,5 s ON : 0,5 s OFF)
- Frequency step: ☒ 1 % step
- Dwell Time: ☒ 1 s ☐ 3 s
- Required Performance Criteria: ☒ Complied

Test Data

- 12 V (dc) Mode

☐ Input a.c. power ports

Coupling Location (Line Stressed)	Coupling Method	Observation
-	CDN (<input type="checkbox"/> M2, <input type="checkbox"/> M3)	-

☒ Input d.c. power ports

Coupling Location (Line Stressed)	Coupling Method	Observation
L - N	CDN (<input checked="" type="checkbox"/> M2, <input type="checkbox"/> M3)	Complied

☒ Signal ports and telecommunication ports

Coupling Location (Line Stressed)	Coupling Method	Observation
LAN(RJ-45)	EM Injection Clamp	Complied
Alarm	EM Injection Clamp	Complied

- PoE Mode

☐ Input a.c. power ports

Coupling Location (Line Stressed)	Coupling Method	Observation
-	CDN (<input type="checkbox"/> M2, <input type="checkbox"/> M3)	-

☐ Input d.c. power ports

Coupling Location (Line Stressed)	Coupling Method	Observation
-	CDN (<input type="checkbox"/> M2, <input type="checkbox"/> M3)	-

☒ Signal ports and telecommunication ports

Coupling Location (Line Stressed)	Coupling Method	Observation
LAN(PoE)	EM Injection Clamp	Complied
Alarm	EM Injection Clamp	Complied

Notes: CDN = Coupling Decoupling Network
"blank" = Not performed

Observations:

Complied – No degradation of function

Test Results

- ☒ PASS Required Performance Criteria
☐ NOT PASS Required Performance Criteria

Remarks

PASS Required Performance Criteria.



3.6 Voltage Dips and Short Interruptions

Reference Standard

EN 61000-4-6:2009

Test Date

N/A

Test Location

EMS-Voltage dip: Electro wave Shieldroom

Test Equipment

Used	Description	Model Number	Manufacturer	Serial Number	Cal. Due
<input type="checkbox"/>	Ultra Compact Simulator	UCS 500 N5	EM TEST	V0936105120	07, 14, 2016
<input type="checkbox"/>	MotorVariac	MV2616	EM TEST	V0936105123	07, 14, 2016

Test Conditions

Temperature: °C
Relative Humidity: %
Atmospheric Pressure: kPa



Test Specifications & Observations/Remarks

Test Level	Duration [in period/ms (50 Hz)]	Results
<input type="checkbox"/> 20 % dip	<input type="checkbox"/> 250 /10	_____
<input type="checkbox"/> 30 % dip	<input type="checkbox"/> 25 /10	_____
<input type="checkbox"/> 60 % dip	<input type="checkbox"/> 10 /10	_____
<input type="checkbox"/> 100 % dip	<input type="checkbox"/> 250 /10	_____

- Voltage variations

<input type="checkbox"/> Unom + 10 %	<input type="checkbox"/> 253 V (ac)	_____
<input type="checkbox"/> Unom - 15 %	<input type="checkbox"/> 195.5 V (ac)	_____

Observations:

Complied – No degradation of function

Test Results

- ☐ PASS Required Performance Criteria
☐ NOT PASS Required Performance Criteria
☒ NOT APPLICABLE

Remarks

Because the E.U.T power is 12 V (dc) power and PoE.



KES Co., Ltd.

3701, 40, Simin-daero 365beon-gil,
Dongan-gu, Anyang-si, Gyeonggi-do, 14057, Korea
Tel: +82-31-425-6200 / Fax: +82-31-424-0450
www.kes.co.kr

Test report No.:
KES-E1-16T0257-R3
Page (37) of (77)

APPENDIX A – TEST DATA

Conducted Emissions at Mains Power Ports

[HOT]

N/A

This report shall not be reproduced except in full, without the written approval of KES Co., Ltd.
The results shown in this test report refer only to the sample(s) tested unless otherwise stated.
The authenticity of the test report, contact shchoi@kes.co.kr



KES Co., Ltd.

3701, 40, Simin-daero 365beon-gil,
Dongan-gu, Anyang-si, Gyeonggi-do, 14057, Korea
Tel: +82-31-425-6200 / Fax: +82-31-424-0450
www.kes.co.kr

Test report No.:
KES-E1-16T0257-R3
Page (38) of (77)

[NEUTRAL]

N/A

This report shall not be reproduced except in full, without the written approval of KES Co., Ltd.
The results shown in this test report refer only to the sample(s) tested unless otherwise stated.
The authenticity of the test report, contact shchoi@kes.co.kr



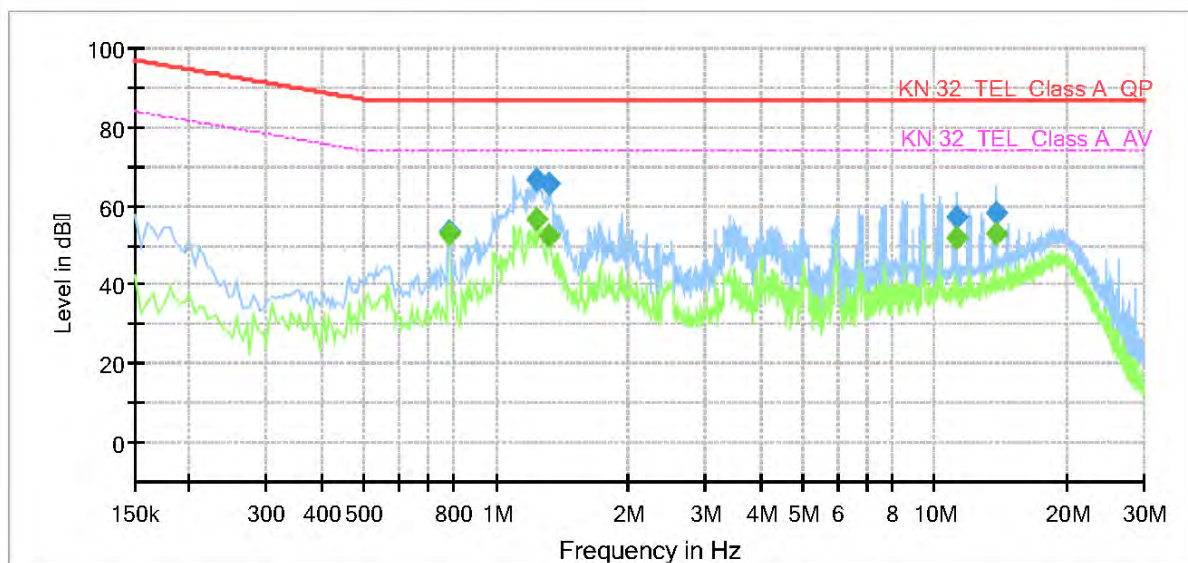
Conducted Emissions at Telecommunication Ports

- 12 V (dc) Mode

[10 Mbps]

Common Information

Test Description: Telecommunication Emission
Model No.: QNV-6020RP
Mode: 12 V (dc) , 10 Mbps
Operator Name: KES



Final Result

Frequency (MHz)	QuasiPeak (dB μ V)	CAverage (dB μ V)	Limit (dB μ V)	Margin (dB)	Meas. Time (ms)	Bandwidth (kHz)	Line	Corr. (dB)
0.780000	---	52.89	74.00	21.11	1000.0	9.000	Single Line	9.9
0.780000	53.63	---	87.00	33.37	1000.0	9.000	Single Line	9.9
1.230000	---	56.57	74.00	17.43	1000.0	9.000	Single Line	9.8
1.230000	66.58	---	87.00	20.42	1000.0	9.000	Single Line	9.8
1.325000	---	52.19	74.00	21.81	1000.0	9.000	Single Line	9.8
1.325000	65.37	---	87.00	21.63	1000.0	9.000	Single Line	9.8
11.195000	---	51.63	74.00	22.37	1000.0	9.000	Single Line	10.1
11.195000	57.38	---	87.00	29.62	1000.0	9.000	Single Line	10.1
13.750000	---	52.72	74.00	21.28	1000.0	9.000	Single Line	10.1
13.750000	58.33	---	87.00	28.67	1000.0	9.000	Single Line	10.1



KES Co., Ltd.

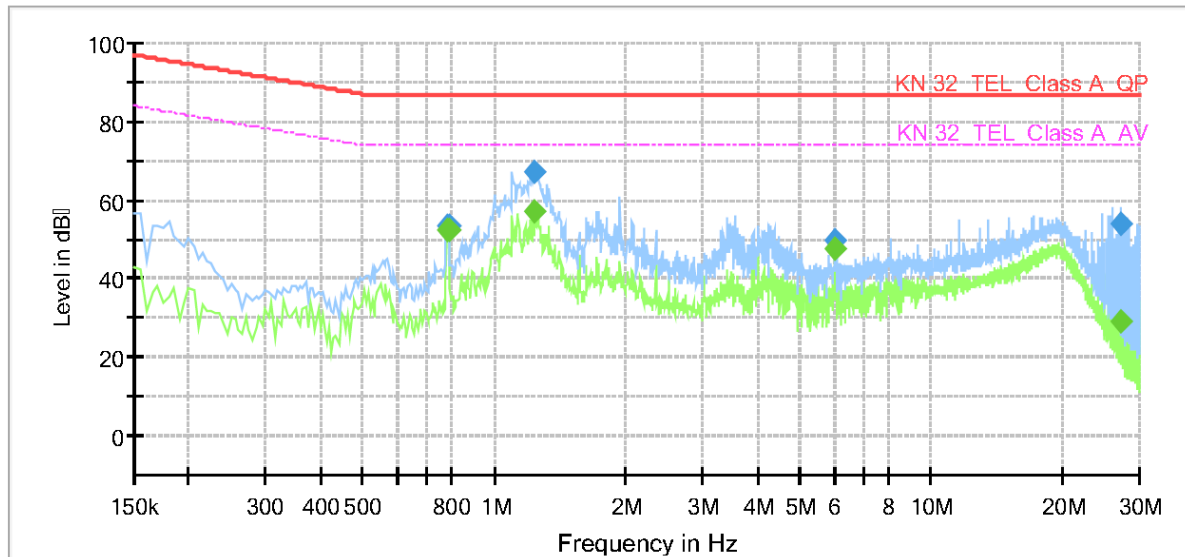
3701, 40, Simin-daero 365beon-gil,
Dongan-gu, Anyang-si, Gyeonggi-do, 14057, Korea
Tel: +82-31-425-6200 / Fax: +82-31-424-0450
www.kes.co.kr

Test report No.:
KES-E1-16T0257-R3
Page (40) of (77)

[100 Mbps]

Common Information

Test Description: Telecommunication Emission
Model No.: QNV-6020RP
Mode: 12 V (dc) , 100 Mbps
Operator Name: KES



Final Result

Frequency (MHz)	QuasiPeak (dBμV)	CAverage (dBμV)	Limit (dBμV)	Margin (dB)	Meas. Time (ms)	Bandwidth (kHz)	Line	Corr. (dB)
0.780000	--	52.62	74.00	21.38	1000.0	9.000	Single Line	9.4
0.780000	53.39	--	87.00	33.61	1000.0	9.000	Single Line	9.4
0.785000	--	52.26	74.00	21.74	1000.0	9.000	Single Line	9.4
0.785000	53.39	--	87.00	33.61	1000.0	9.000	Single Line	9.4
1.230000	--	57.00	74.00	17.00	1000.0	9.000	Single Line	9.3
1.230000	67.05	--	87.00	19.95	1000.0	9.000	Single Line	9.3
6.045000	--	47.55	74.00	26.45	1000.0	9.000	Single Line	9.4
6.045000	49.73	--	87.00	37.27	1000.0	9.000	Single Line	9.4
27.295000	--	29.27	74.00	44.73	1000.0	9.000	Single Line	9.4
27.295000	53.73	--	87.00	33.27	1000.0	9.000	Single Line	9.4

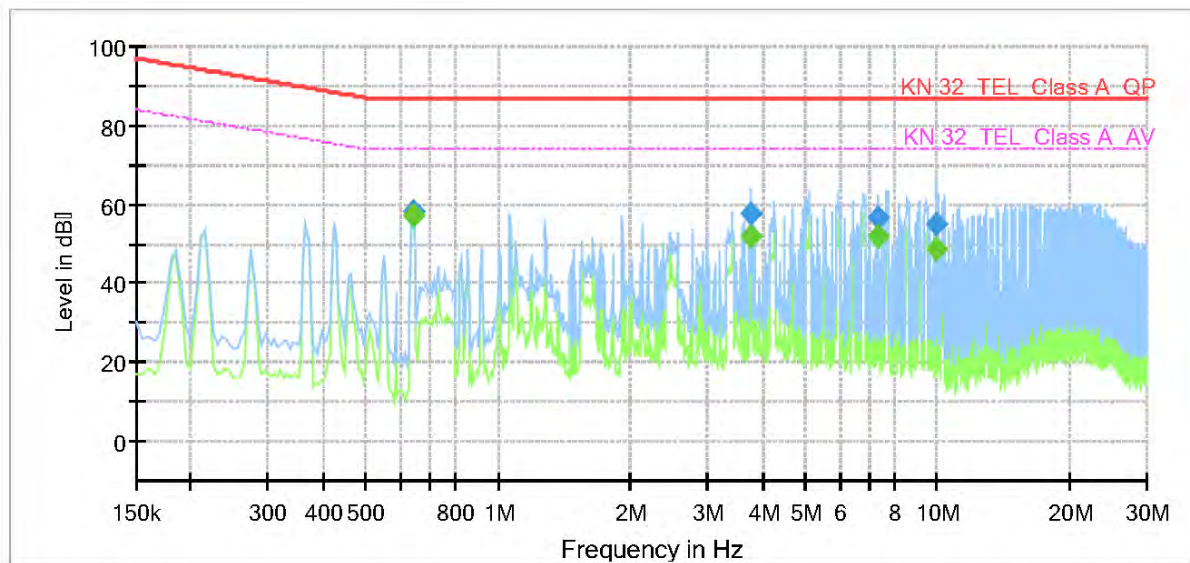
This report shall not be reproduced except in full, without the written approval of KES Co., Ltd.
The results shown in this test report refer only to the sample(s) tested unless otherwise stated.
The authenticity of the test report, contact shchoi@kes.co.kr

- PoE Mode

[10 Mbps]

Common Information

Test Description:	Telecommunication Emission
Model No.:	QNV-6020RP
Mode	PoE , 10 Mbps
Operator Name:	KES



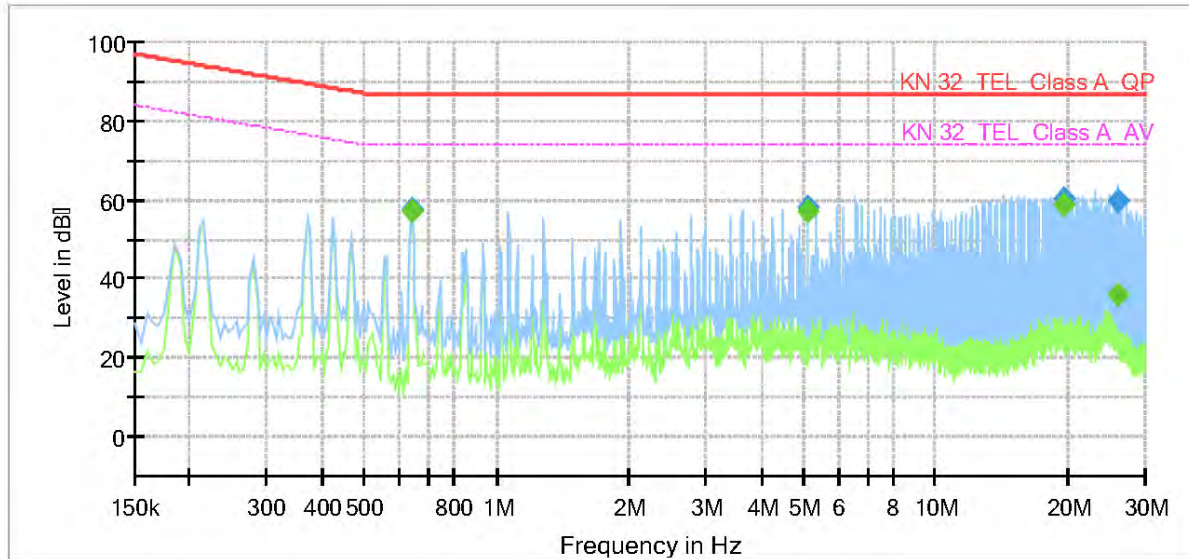
Final Result

Frequency (MHz)	QuasiPeak (dB μ V)	CAverage (dB μ V)	Limit (dB μ V)	Margin (dB)	Meas. Time (ms)	Bandwidth (kHz)	Line	Corr. (dB)
0.640000	---	57.05	74.00	16.95	1000.0	9.000	Single Line	9.9
0.640000	58.02	---	87.00	28.98	1000.0	9.000	Single Line	9.9
3.750000	---	51.92	74.00	22.08	1000.0	9.000	Single Line	9.8
3.750000	57.92	---	87.00	29.08	1000.0	9.000	Single Line	9.8
7.335000	---	51.80	74.00	22.20	1000.0	9.000	Single Line	10.0
7.335000	56.49	---	87.00	30.51	1000.0	9.000	Single Line	10.0
9.945000	---	48.84	74.00	25.16	1000.0	9.000	Single Line	10.1
9.945000	55.24	---	87.00	31.76	1000.0	9.000	Single Line	10.1

[100 Mbps]

Common Information

Test Description:	Telecommunication Emission
Model No.:	QNV-6020RP
Mode	PoE , 100 Mbps
Operator Name:	KES



Final Result

Frequency (MHz)	QuasiPeak (dBm)	CAverage (dBm)	Limit (dBm)	Margin (dB)	Meas. Time (ms)	Bandwidth (kHz)	Line	Corr. (dB)
0.640000	---	56.95	74.00	17.05	1000.0	9.000	Single Line	9.4
0.640000	57.49	---	87.00	29.51	1000.0	9.000	Single Line	9.4
5.115000	---	57.07	74.00	16.93	1000.0	9.000	Single Line	9.4
5.115000	58.06	---	87.00	28.94	1000.0	9.000	Single Line	9.4
19.610000	---	58.69	74.00	15.31	1000.0	9.000	Single Line	9.5
19.610000	60.19	---	87.00	26.81	1000.0	9.000	Single Line	9.5
26.015000	---	35.86	74.00	38.14	1000.0	9.000	Single Line	9.4
26.015000	59.76	---	87.00	27.24	1000.0	9.000	Single Line	9.4

Radiated Electric Field Emissions(Below 1 GHz)

- 12 V (dc) Mode

Frequency	Amplitude	ANT	ANT.	Correction Factor		Corrected	Applicable	Margin
[MHz]	[dB μ V]	Polar. (H/V)	Height [m]	ANT. [dB/m]	Cable [dB]	[dB μ V/m]	Limit [dB μ V/m]	
147.45	22.10	H	4.00	8.11	2.76	32.97	40.00	7.03
155.64	25.60	V	1.00	8.40	2.80	36.80	40.00	3.20
224.99	14.10	H	3.95	11.85	3.53	29.48	40.00	10.52
229.37	11.60	V	1.00	11.95	3.58	27.13	40.00	12.87
324.99	25.27	V	1.00	13.96	4.43	43.66	47.00	3.34
349.98	23.80	H	2.86	14.54	4.66	43.00	47.00	4.00
374.99	22.00	H	2.17	15.12	4.85	41.97	47.00	5.03
375.00	23.40	V	1.00	15.12	4.85	43.37	47.00	3.63
499.98	13.00	H	2.16	17.10	5.75	35.85	47.00	11.15

* H : Horizontal, V : Vertical

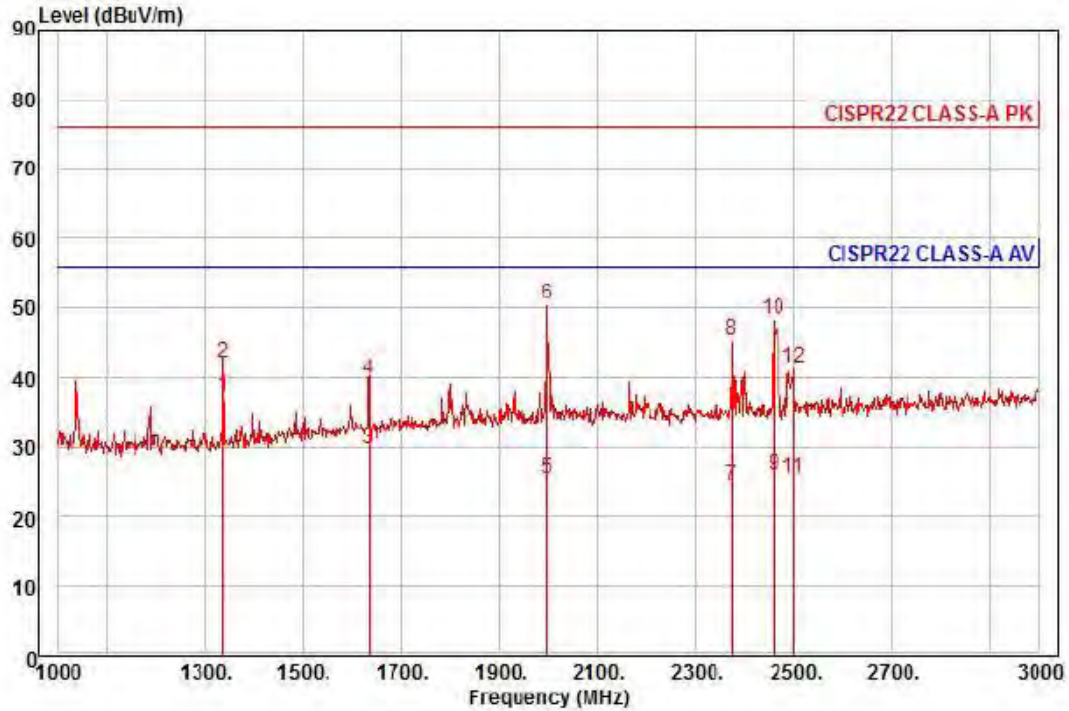
- PoE Mode

Frequency	Amplitude	ANT	ANT.	Correction Factor		Corrected	Applicable	Margin
[MHz]	[dB μ V]	Polar. (H/V)	Height [m]	ANT. [dB/m]	Cable [dB]	[dB μ V/m]	Limit [dB μ V/m]	
221.17	18.50	V	1.00	11.77	3.49	33.76	40.00	6.24
221.18	10.84	H	3.61	11.77	3.49	26.10	40.00	13.90
222.75	11.70	V	1.00	11.81	3.51	27.02	40.00	12.98
224.00	10.90	H	1.84	11.83	3.52	26.25	40.00	13.75
374.97	16.92	H	3.56	15.12	4.85	36.89	47.00	10.11
374.98	22.84	V	1.00	15.12	4.85	42.81	47.00	4.19
399.98	17.00	H	3.40	15.70	5.04	37.74	47.00	9.26
400.00	18.20	V	1.00	15.70	5.04	38.94	47.00	8.06

* H : Horizontal, V : Vertical

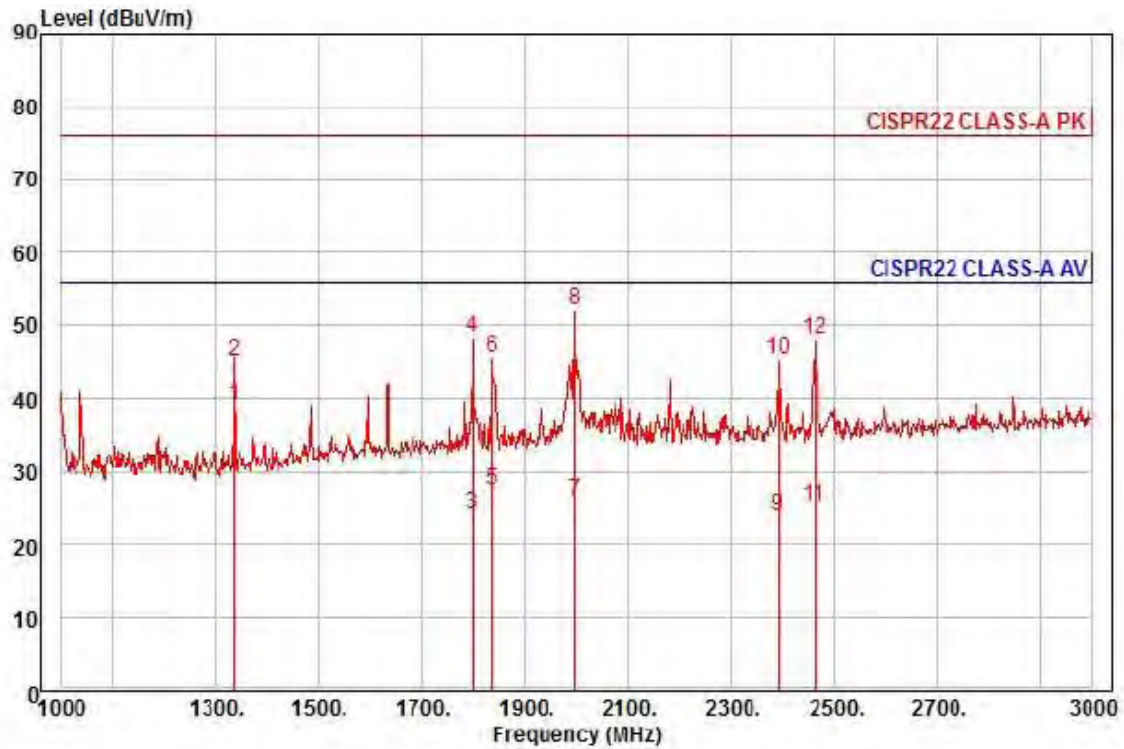
Radiated Electric Field Emissions(Above 1 GHz)

- 12 V (dc) Mode



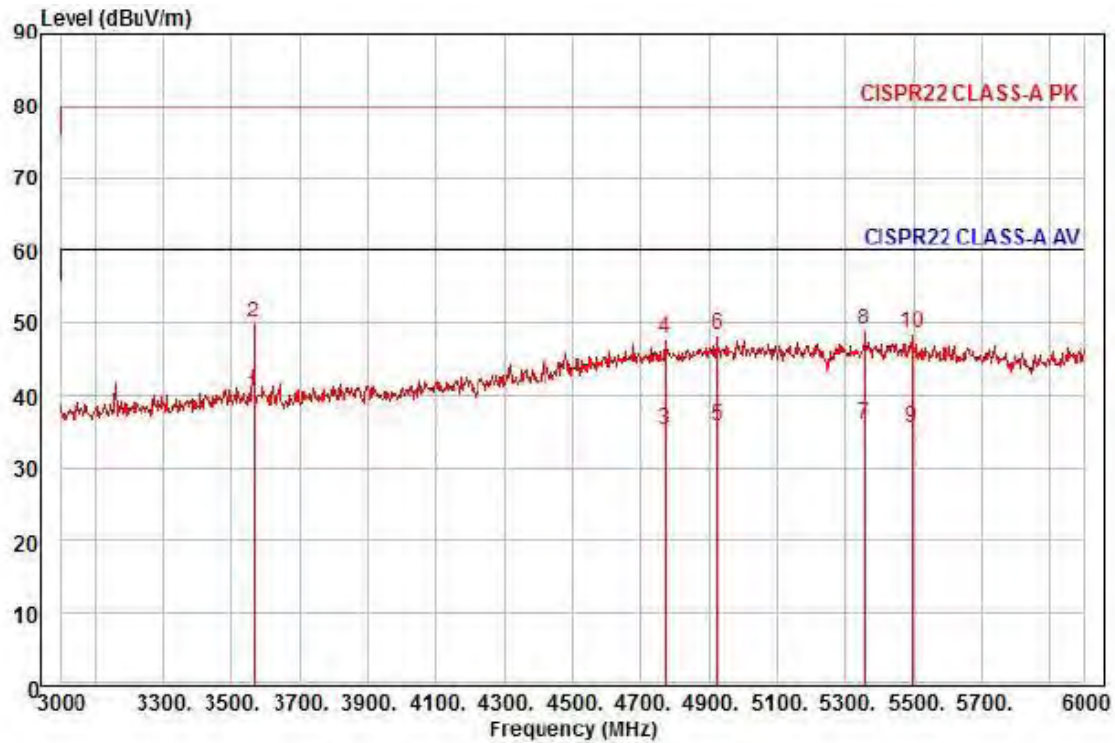
Site : chamber
Condition: CISPR22 CLASS-A PK 3m HORN781(2015.05.07) horizontal
: RBW:1000.000kHz VBW:1000.000kHz SWT:Auto
Project : NETWORK CAMERA
Model : QNV-6020RP
Mode : 12 V (dc)
Memo : (1 ~ 3) GHz

		Read	Ant	Cable	Preamp	TPos	Limit	Over		
	Freq	Level	Factor	Loss	Factor		Line	Limit	Pol/Phase	Remark
	MHz	dBuV	dB/m	dB	dB	deg	dBuV/m	dB		
1 pp	1336.00	44.57	25.24	7.48	39.96	313	56.00	-18.67	horizontal	Average
2	1336.00	49.48	25.24	7.48	39.96	313	76.00	-33.76	horizontal	Peak
3	1634.00	34.72	26.43	8.34	39.81	116	56.00	-26.32	horizontal	Average
4	1634.00	44.71	26.43	8.34	39.81	116	76.00	-36.33	horizontal	Peak
5	1998.00	27.98	27.87	9.34	39.63	178	56.00	-30.44	horizontal	Average
6 pk	1998.00	53.00	27.87	9.34	39.63	178	76.00	-25.42	horizontal	Peak
7	2374.00	25.56	28.80	9.92	39.85	212	56.00	-31.57	horizontal	Average
8	2374.00	46.61	28.80	9.92	39.85	212	76.00	-30.52	horizontal	Peak
9	2460.00	26.93	29.01	10.06	39.90	316	56.00	-29.90	horizontal	Average
10	2460.00	49.04	29.01	10.06	39.90	316	76.00	-27.79	horizontal	Peak
11	2500.00	26.15	29.10	10.12	39.92	197	56.00	-30.55	horizontal	Average
12	2500.00	42.12	29.10	10.12	39.92	197	76.00	-34.58	horizontal	Peak



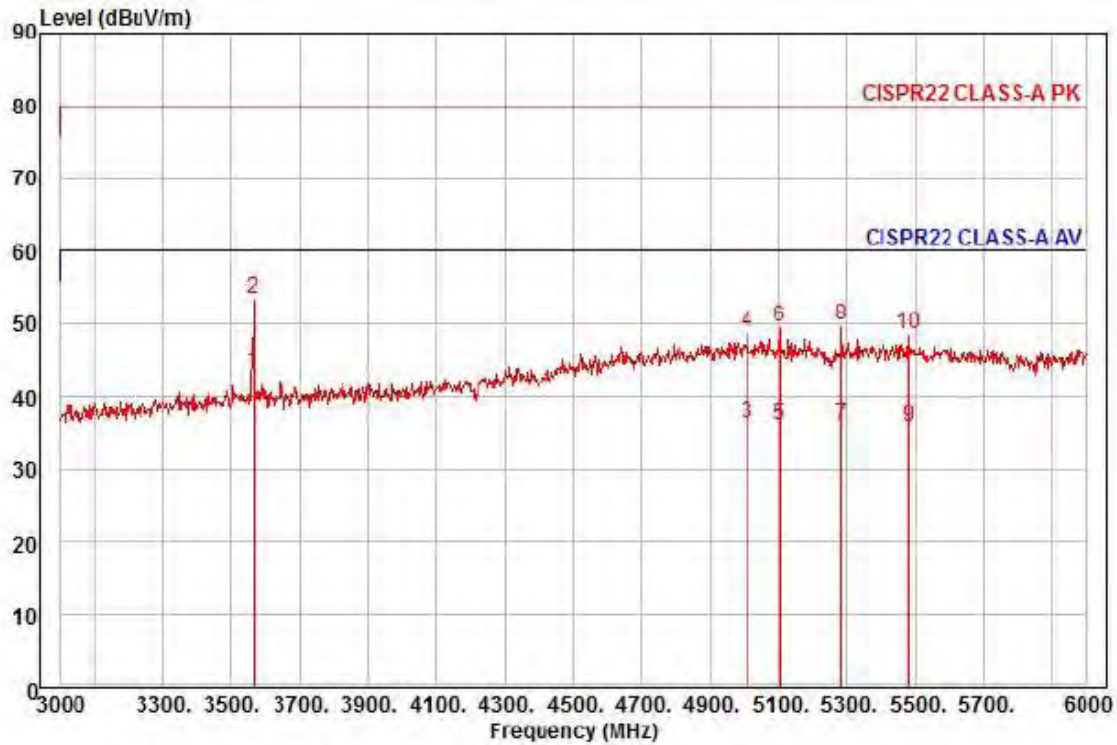
Site : chamber
Condition: CISPR22 CLASS-A PK 3m HORN781(2015.05.07) vertical
: RBW:1000.000kHz VBW:1000.000kHz SWT:Auto
Project : NETWORK CAMERA
Model : QNV-6020RP
Mode : 12 V (dc)
Memo : (1 ~ 3) GHz

	Read Freq	Ant Level	Ant Factor	Cable Loss	Preamp Factor	TPos	Limit Line	Over Limit	Pol/Phase	Remark
	MHz	dBuV	dB/m	dB	dB	deg	dBuV/m	dB		
1 pp	1336.00	46.33	25.24	7.48	39.96	7	56.00	-16.91	vertical	Average
2	1336.00	52.29	25.24	7.48	39.96	7	76.00	-30.95	vertical	Peak
3	1798.00	28.02	27.08	8.79	39.73	345	56.00	-31.84	vertical	Average
4	1798.00	52.07	27.08	8.79	39.73	345	76.00	-27.79	vertical	Peak
5	1838.00	30.99	27.24	8.90	39.71	215	56.00	-28.58	vertical	Average
6	1838.00	49.16	27.24	8.90	39.71	215	76.00	-30.41	vertical	Peak
7	1998.00	28.32	27.87	9.34	39.63	305	56.00	-30.10	vertical	Average
8 pk	1998.00	54.56	27.87	9.34	39.63	305	76.00	-23.86	vertical	Peak
9	2392.00	25.19	28.84	9.95	39.86	21	56.00	-31.88	vertical	Average
10	2392.00	46.32	28.84	9.95	39.86	21	76.00	-30.75	vertical	Peak
11	2462.00	26.15	29.01	10.06	39.90	348	56.00	-30.68	vertical	Average
12	2462.00	48.80	29.01	10.06	39.90	348	76.00	-28.03	vertical	Peak



Site : chamber
Condition: CISPR22 CLASS-A PK 3m HORN781(2015.05.07) horizontal
RBW:1000.000kHz VBW:1000.000kHz SWT:Auto
Project : NETWORK CAMERA
Model : QNV-6020RP
Mode : 12 V (dc)
Memo : (3 ~ 6) GHz

		Read	Ant	Cable	Preamp	TPos	Limit	Over		
	Freq	Level	Factor	Loss	Factor		Line	Limit	Pol/Phase	Remark
	MHz	dBuV	dB/m	dB	dB	deg	dBuV/m	dB		
1	pp	3564.00	36.58	31.28	12.64	40.32	148	60.00	-19.82	horizontal Average
2	pk	3564.00	46.48	31.28	12.64	40.32	148	80.00	-29.92	horizontal Peak
3		4770.00	24.50	36.41	14.92	40.41	61	60.00	-24.58	horizontal Average
4		4770.00	36.84	36.41	14.92	40.41	61	80.00	-32.24	horizontal Peak
5		4923.00	23.81	37.28	15.19	40.41	26	60.00	-24.13	horizontal Average
6		4923.00	36.30	37.28	15.19	40.41	26	80.00	-31.64	horizontal Peak
7		5355.00	23.72	37.00	15.75	40.36	72	60.00	-23.89	horizontal Average
8		5355.00	36.67	37.00	15.75	40.36	72	80.00	-30.94	horizontal Peak
9		5496.00	23.36	36.72	15.92	40.34	78	60.00	-24.34	horizontal Average
10		5496.00	36.20	36.72	15.92	40.34	78	80.00	-31.50	horizontal Peak



Site : chamber
Condition: CISPR22 CLASS-A PK 3m HORN781(2015.05.07) vertical
: RBW:1000.000kHz VBW:1000.000kHz SWT:Auto
Project : NETWORK CAMERA
Model : QNV-6020RP
Mode : 12 V (dc)
Memo : (3 ~ 6) GHz

	Freq	Read Level	Ant Factor	Cable Loss	Preamp Factor	TPos	Limit Line	Over Limit	Pol/Phase	Remark
	MHz	dBuV	dB/m	dB	dB	deg	dBuV/m	dB		
1 pp	3564.00	39.85	31.28	12.64	40.32	125	60.00	-16.55	vertical	Average
2 pk	3564.00	49.76	31.28	12.64	40.32	125	80.00	-26.64	vertical	Peak
3	5010.00	23.57	37.70	15.34	40.41	47	60.00	-23.80	vertical	Average
4	5010.00	36.27	37.70	15.34	40.41	47	80.00	-31.10	vertical	Peak
5	5103.00	23.58	37.51	15.45	40.40	344	60.00	-23.86	vertical	Average
6	5103.00	37.03	37.51	15.45	40.40	344	80.00	-30.41	vertical	Peak
7	5283.00	23.59	37.15	15.66	40.37	88	60.00	-23.97	vertical	Average
8	5283.00	37.37	37.15	15.66	40.37	88	80.00	-30.19	vertical	Peak
9	5481.00	23.46	36.75	15.90	40.34	18	60.00	-24.23	vertical	Average
10	5481.00	36.29	36.75	15.90	40.34	18	80.00	-31.40	vertical	Peak

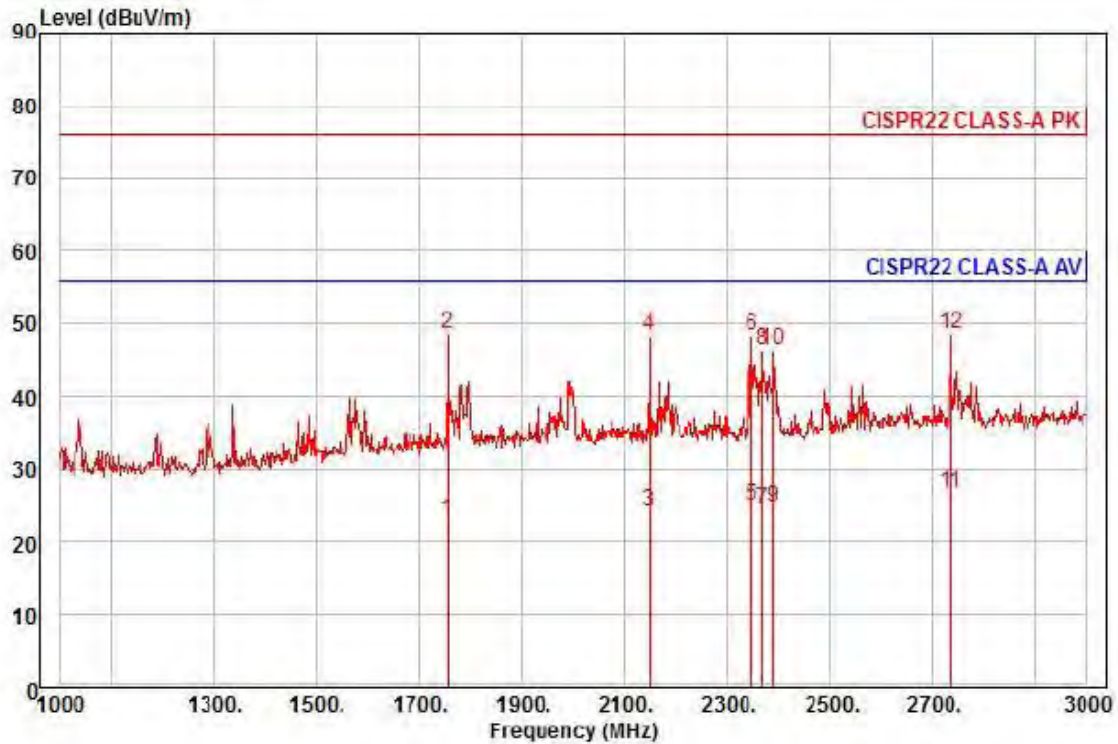


KES Co., Ltd.

3701, 40, Simin-daero 365beon-gil,
Dongan-gu, Anyang-si, Gyeonggi-do, 14057, Korea
Tel: +82-31-425-6200 / Fax: +82-31-424-0450
www.kes.co.kr

Test report No.:
KES-E1-16T0257-R3
Page (48) of (77)

- PoE Mode



Site : chamber
Condition: CISPR22 CLASS-A PK 3m HORN781(2015.05.07) horizontal
: RBW:1000.000kHz VBW:1000.000kHz SWT:Auto
Project : NETWORK CAMERA
Model : QNV-6020RP
Mode : PoE
Memo : (1 ~ 3) GHz

	Freq	Read Level	Ant Factor	Cable Loss	Preamp Factor	TPos	Limit Line	Over Limit	Pol/Phase	Remark
	MHz	dBuV	dB/m	dB	dB	deg	dBuV/m	dB		
1	1756.00	27.33	26.91	8.68	39.75	111	56.00	-32.83	horizontal	Average
2	1756.00	52.61	26.91	8.68	39.75	111	76.00	-27.55	horizontal	Peak
3	2148.00	26.15	28.24	9.58	39.72	226	56.00	-31.75	horizontal	Average
4	2148.00	50.09	28.24	9.58	39.72	226	76.00	-27.81	horizontal	Peak
5	2348.00	26.13	28.73	9.88	39.83	229	56.00	-31.09	horizontal	Average
6	2348.00	49.61	28.73	9.88	39.83	229	76.00	-27.61	horizontal	Peak
7	2370.00	25.75	28.79	9.92	39.84	119	56.00	-31.38	horizontal	Average
8	2370.00	47.55	28.79	9.92	39.84	119	76.00	-29.58	horizontal	Peak
9	2390.00	25.72	28.84	9.95	39.86	229	56.00	-31.35	horizontal	Average
10	2390.00	47.45	28.84	9.95	39.86	229	76.00	-29.62	horizontal	Peak
11 av	2736.00	26.54	29.68	10.59	40.06	241	56.00	-29.25	horizontal	Average
12 pp	2736.00	48.31	29.68	10.59	40.06	241	76.00	-27.48	horizontal	Peak

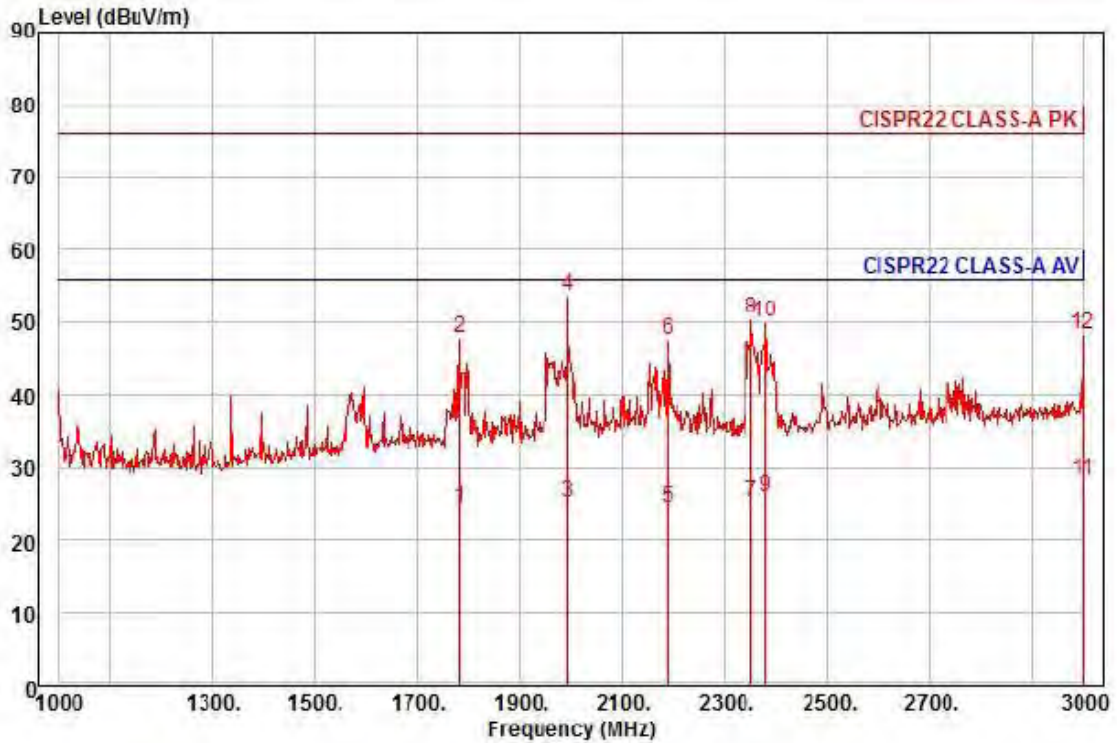
This report shall not be reproduced except in full, without the written approval of KES Co., Ltd.
The results shown in this test report refer only to the sample(s) tested unless otherwise stated.
The authenticity of the test report, contact shchoi@kes.co.kr



KES Co., Ltd.

3701, 40, Simin-daero 365beon-gil,
Dongan-gu, Anyang-si, Gyeonggi-do, 14057, Korea
Tel: +82-31-425-6200 / Fax: +82-31-424-0450
www.kes.co.kr

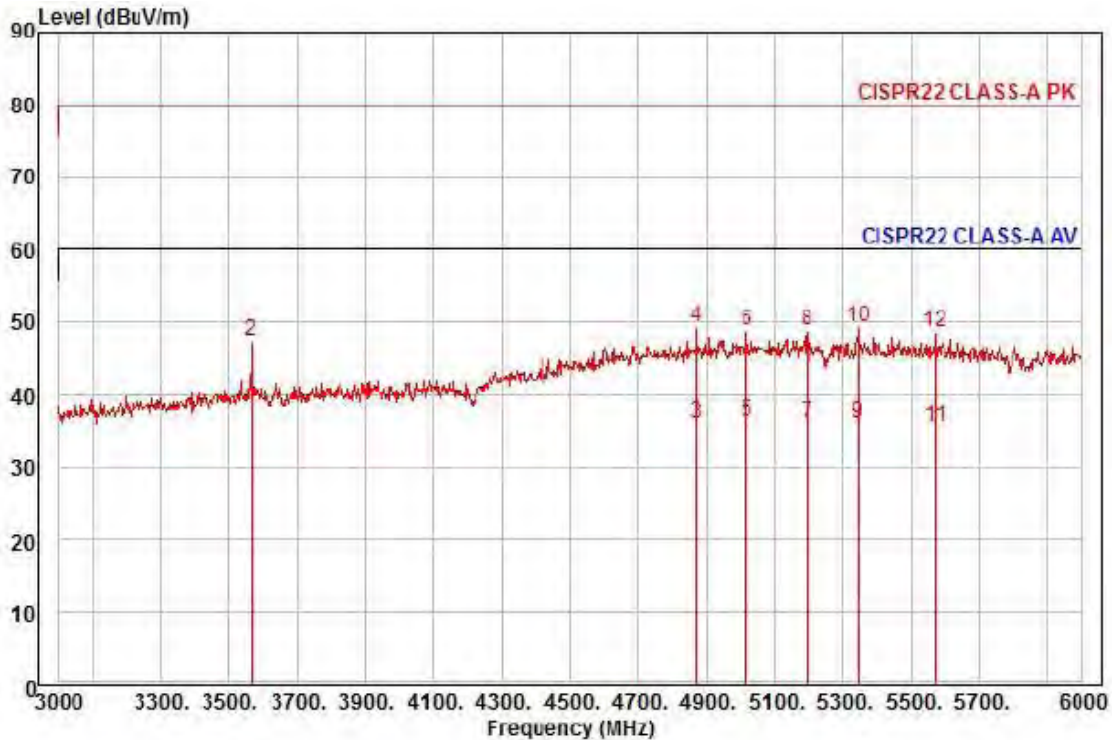
Test report No.:
KES-E1-16T0257-R3
Page (49) of (77)



Site : chamber
Condition: CISPR22 CLASS-A PK 3m HORN781(2015.05.07) vertical
: RBW:1000.000kHz VBW:1000.000kHz SWT:Auto
Project : NETWORK CAMERA
Model : QNV-6020RP
Mode : PoE
Memo : (1 ~ 3) GHz

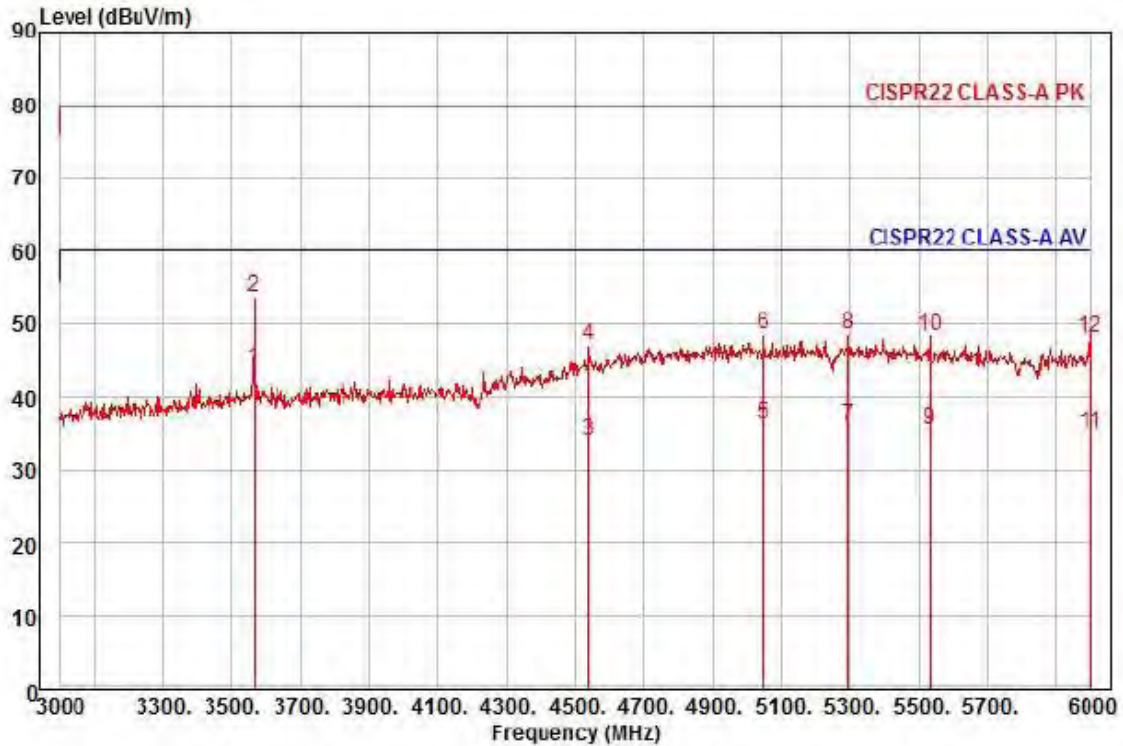
	Freq	Read Level	Ant Factor	Cable Loss	Preamp Factor	TPos	Limit Line	Over Limit	Pol/Phase	Remark
	MHz	dBuV	dB/m	dB	dB	deg	dBuV/m	dB		
1	1782.00	28.55	27.01	8.75	39.74	299	56.00	-31.43	vertical	Average
2	1782.00	51.70	27.01	8.75	39.74	299	76.00	-28.28	vertical	Peak
3	1994.00	27.67	27.86	9.33	39.63	302	56.00	-30.77	vertical	Average
4 pp	1994.00	56.17	27.86	9.33	39.63	302	76.00	-22.27	vertical	Peak
5	2188.00	26.36	28.34	9.64	39.74	113	56.00	-31.40	vertical	Average
6	2188.00	49.27	28.34	9.64	39.74	113	76.00	-28.49	vertical	Peak
7	2352.00	26.48	28.74	9.89	39.83	113	56.00	-30.72	vertical	Average
8	2352.00	51.60	28.74	9.89	39.83	113	76.00	-25.60	vertical	Peak
9	2380.00	27.05	28.81	9.93	39.85	113	56.00	-30.06	vertical	Average
10	2380.00	51.21	28.81	9.93	39.85	113	76.00	-25.90	vertical	Peak
11 av	3000.00	26.95	30.33	11.22	40.21	233	56.00	-27.71	vertical	Average
12	3000.00	46.95	30.33	11.22	40.21	233	76.00	-27.71	vertical	Peak

This report shall not be reproduced except in full, without the written approval of KES Co., Ltd.
The results shown in this test report refer only to the sample(s) tested unless otherwise stated.
The authenticity of the test report, contact shchoi@kes.co.kr



Site : chamber
Condition: CISPR22 CLASS-A PK 3m HORN781(2015.05.07) horizontal
: RBW:1000.000kHz VBW:1000.000kHz SWT:Auto
Project : NETWORK CAMERA
Model : QNV-6020RP
Mode : PoE
Memo : (3 ~ 6) GHz

	Freq	Read Level	Ant Factor	Cable Loss	Preamp Factor	TPos	Limit Line	Over Limit	Pol/Phase	Remark
	MHz	dBuV	dB/m	dB	dB	deg	dBuV/m	dB		
1 pp	3564.00	34.33	31.28	12.64	40.32	177	60.00	-22.07	horizontal	Average
2	3564.00	43.81	31.28	12.64	40.32	177	80.00	-32.59	horizontal	Peak
3	4872.00	24.25	36.99	15.10	40.41	291	60.00	-24.07	horizontal	Average
4	4872.00	37.62	36.99	15.10	40.41	291	80.00	-30.70	horizontal	Peak
5	5019.00	23.66	37.68	15.35	40.41	118	60.00	-23.72	horizontal	Average
6	5019.00	36.24	37.68	15.35	40.41	118	80.00	-31.14	horizontal	Peak
7	5196.00	23.55	37.32	15.56	40.38	6	60.00	-23.95	horizontal	Average
8	5196.00	36.31	37.32	15.56	40.38	6	80.00	-31.19	horizontal	Peak
9	5343.00	23.61	37.03	15.73	40.36	348	60.00	-23.99	horizontal	Average
10 pk	5343.00	36.96	37.03	15.73	40.36	348	80.00	-30.64	horizontal	Peak
11	5571.00	23.23	36.57	16.05	40.33	18	60.00	-24.48	horizontal	Average
12	5571.00	36.18	36.57	16.05	40.33	18	80.00	-31.53	horizontal	Peak



Site : chamber

Condition: CISPR22 CLASS-A PK 3m HORN781(2015.05.07) vertical

: RBW:1000.000kHz VBW:1000.000kHz SWT:Auto

Project : NETWORK CAMERA

Model : QNV-6020RP

Mode : PoE

Memo : (3 ~ 6) GHz

	Freq	Read Level	Ant Factor	Cable Loss	Preamp Factor	TPos	Limit Line	Over Limit	Pol/Phase	Remark
	MHz	dBuV	dB/m	dB	dB	deg	dBuV/m	dB		
1 pp	3564.00	40.27	31.28	12.64	40.32	92	60.00	-16.13	vertical	Average
2 pk	3564.00	50.11	31.28	12.64	40.32	92	80.00	-26.29	vertical	Peak
3	4539.00	24.82	35.09	14.50	40.41	35	60.00	-26.00	vertical	Average
4	4539.00	37.94	35.09	14.50	40.41	35	80.00	-32.88	vertical	Peak
5	5049.00	23.58	37.62	15.39	40.40	237	60.00	-23.81	vertical	Average
6	5049.00	35.93	37.62	15.39	40.40	237	80.00	-31.46	vertical	Peak
7	5295.00	23.51	37.12	15.68	40.37	133	60.00	-24.06	vertical	Average
8	5295.00	36.13	37.12	15.68	40.37	133	80.00	-31.44	vertical	Peak
9	5532.00	23.36	36.65	15.98	40.34	46	60.00	-24.35	vertical	Average
10	5532.00	35.98	36.65	15.98	40.34	46	80.00	-31.73	vertical	Peak
11	6000.00	22.90	35.70	16.86	40.27	298	60.00	-24.81	vertical	Average
12	6000.00	35.69	35.70	16.86	40.27	298	80.00	-32.02	vertical	Peak

This report shall not be reproduced except in full, without the written approval of KES Co., Ltd.

The results shown in this test report refer only to the sample(s) tested unless otherwise stated.

The authenticity of the test report, contact shchoi@kes.co.kr

**KES Co., Ltd.**

3701, 40, Simin-daero 365beon-gil,
Dongan-gu, Anyang-si, Gyeonggi-do, 14057, Korea
Tel: +82-31-425-6200 / Fax: +82-31-424-0450
www.kes.co.kr

Test report No.:
KES-E1-16T0257-R3
Page (52) of (77)

Harmonic Current Emissions and Voltage Fluctuations and Flicker**Average harmonic current results**

Hn	I _{eff} [A]	% of Limit	Limit [A]	Result
1	N/A			
2				
3				
4				
5				
6				
7				
8				
9				
10				
11				
12				
13				
14				
15				
16				
17				
18				
19				
20				
21				
22				
23				
24				
25				
26				
27				
28				
29				
30				
31				
32				
33				
34				
35				
36				
37				
38				
39				
40				

This report shall not be reproduced except in full, without the written approval of KES Co., Ltd.
The results shown in this test report refer only to the sample(s) tested unless otherwise stated.
The authenticity of the test report, contact shchoi@kes.co.kr

**KES Co., Ltd.**

3701, 40, Simin-daero 365beon-gil,
Dongan-gu, Anyang-si, Gyeonggi-do, 14057, Korea
Tel: +82-31-425-6200 / Fax: +82-31-424-0450
www.kes.co.kr

Test report No.:
KES-E1-16T0257-R3
Page (53) of (77)

Test Data - Harmonics (continued)

Maximum harmonic current results				
Hn	I _{eff} [A]	% of Limit	Limit [A]	Result
1	N/A			
2				
3				
4				
5				
6				
7				
8				
9				
10				
11				
12				
13				
14				
15				
16				
17				
18				
19				
20				
21				
22				
23				
24				
25				
26				
27				
28				
29				
30				
31				
32				
33				
34				
35				
36				
37				
38				
39				
40				

This report shall not be reproduced except in full, without the written approval of KES Co., Ltd.
The results shown in this test report refer only to the sample(s) tested unless otherwise stated.
The authenticity of the test report, contact shchoi@kes.co.kr



KES Co., Ltd.

3701, 40, Simin-daero 365beon-gil,
Dongan-gu, Anyang-si, Gyeonggi-do, 14057, Korea
Tel: +82-31-425-6200 / Fax: +82-31-424-0450
www.kes.co.kr

Test report No.:
KES-E1-16T0257-R3
Page (54) of (77)

Test Data - Voltage Fluctuations

Maximum Flicker results

	EUT values	Limit	Result
Pst	N/A		
Plt			
dc [%]			
dmax [%]			
Tmax [s]			

This report shall not be reproduced except in full, without the written approval of KES Co., Ltd.
The results shown in this test report refer only to the sample(s) tested unless otherwise stated.
The authenticity of the test report, contact shchoi@kes.co.kr



KES Co., Ltd.

3701, 40, Simin-daero 365beon-gil,
Dongan-gu, Anyang-si, Gyeonggi-do, 14057, Korea
Tel: +82-31-425-6200 / Fax: +82-31-424-0450
www.kes.co.kr

Test report No.:
KES-E1-16T0257-R3
Page (55) of (77)

Test Setup Photos and Configuration

Conducted Voltage Emissions

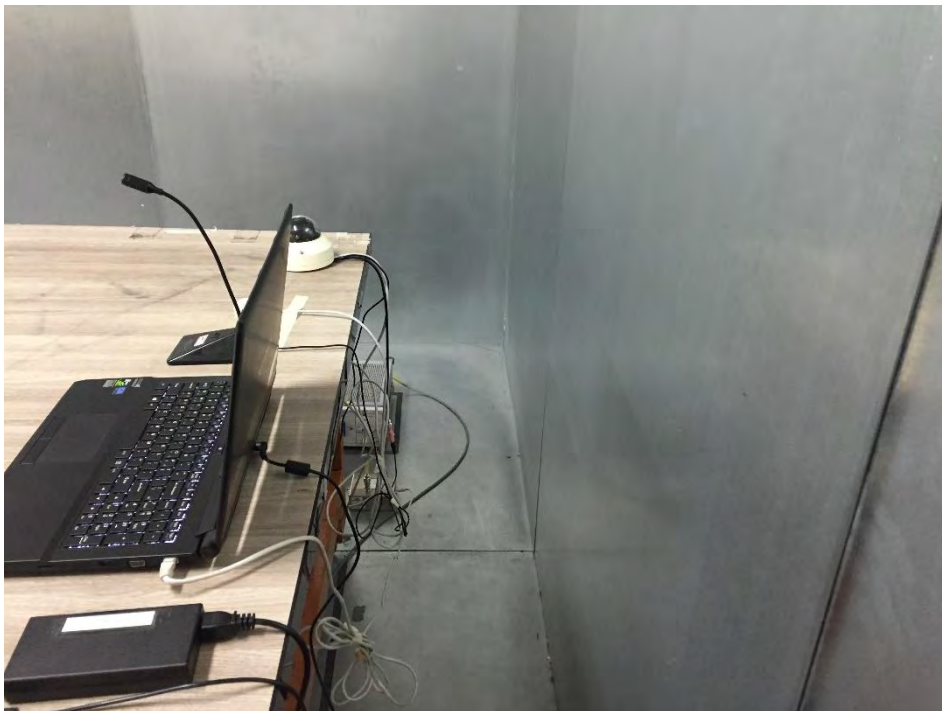
N/A

N/A

This report shall not be reproduced except in full, without the written approval of KES Co., Ltd.
The results shown in this test report refer only to the sample(s) tested unless otherwise stated.
The authenticity of the test report, contact shchoi@kes.co.kr

Conducted Telecommunication Emissions

- 12 V (dc) Mode



This report shall not be reproduced except in full, without the written approval of KES Co., Ltd.
The results shown in this test report refer only to the sample(s) tested unless otherwise stated.
The authenticity of the test report, contact shchoi@kes.co.kr

- PoE Mode



This report shall not be reproduced except in full, without the written approval of KES Co., Ltd.
The results shown in this test report refer only to the sample(s) tested unless otherwise stated.
The authenticity of the test report, contact shchoi@kes.co.kr

Radiated Electric Field Emissions(Below 1 GHz)

- 12 V (dc) Mode



This report shall not be reproduced except in full, without the written approval of KES Co., Ltd.
The results shown in this test report refer only to the sample(s) tested unless otherwise stated.
The authenticity of the test report, contact shchoi@kes.co.kr

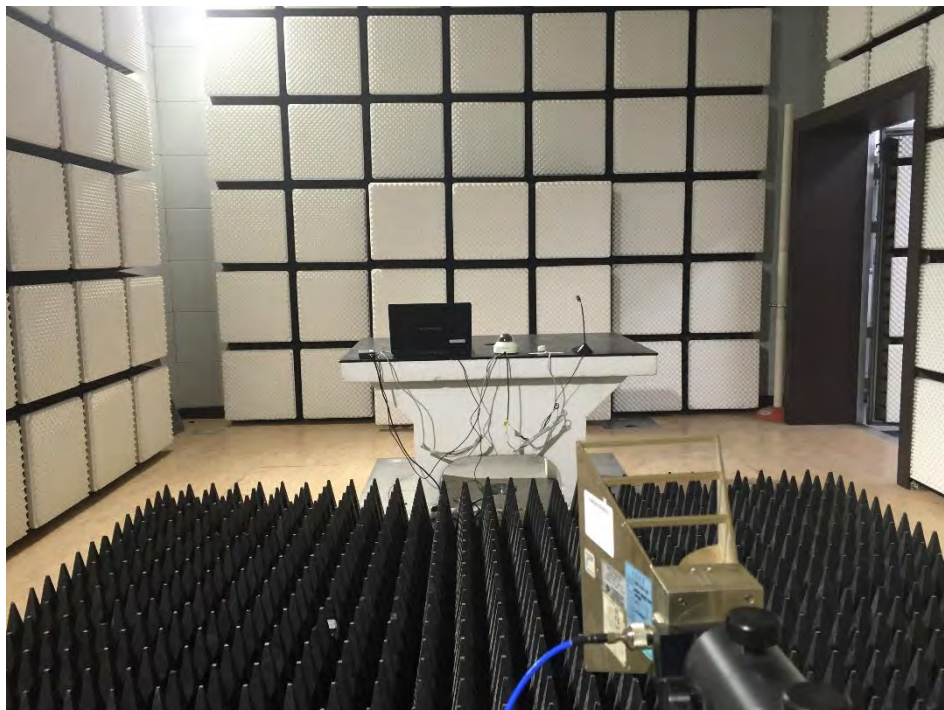
- PoE Mode



This report shall not be reproduced except in full, without the written approval of KES Co., Ltd.
The results shown in this test report refer only to the sample(s) tested unless otherwise stated.
The authenticity of the test report, contact shchoi@kes.co.kr

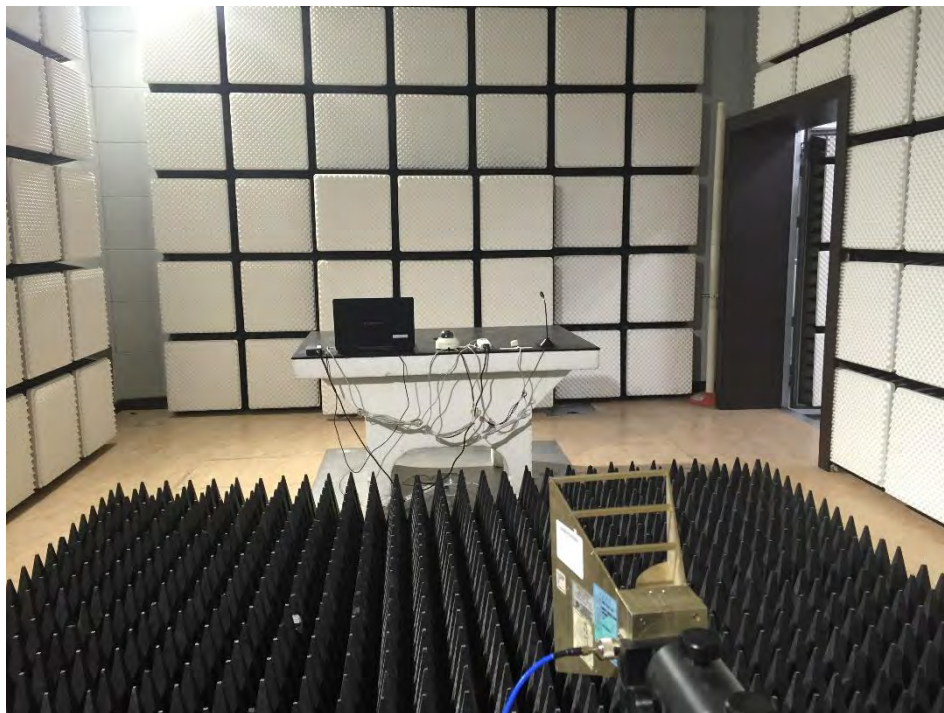
Radiated Electric Field Emissions(Above 1 GHz)

- 12 V (dc) Mode



This report shall not be reproduced except in full, without the written approval of KES Co., Ltd.
The results shown in this test report refer only to the sample(s) tested unless otherwise stated.
The authenticity of the test report, contact shchoi@kes.co.kr

- PoE Mode



This report shall not be reproduced except in full, without the written approval of KES Co., Ltd.
The results shown in this test report refer only to the sample(s) tested unless otherwise stated.
The authenticity of the test report, contact shchoi@kes.co.kr



KES Co., Ltd.

3701, 40, Simin-daero 365beon-gil,
Dongan-gu, Anyang-si, Gyeonggi-do, 14057, Korea
Tel: +82-31-425-6200 / Fax: +82-31-424-0450
www.kes.co.kr

Test report No.:
KES-E1-16T0257-R3
Page (62) of (77)

Harmonic Current Emissions and Voltage Fluctuations and Flicker

N/A

This report shall not be reproduced except in full, without the written approval of KES Co., Ltd.
The results shown in this test report refer only to the sample(s) tested unless otherwise stated.
The authenticity of the test report, contact shchoi@kes.co.kr

Electrostatic Discharge

- 12 V (dc) Mode



- PoE Mode



This report shall not be reproduced except in full, without the written approval of KES Co., Ltd.
The results shown in this test report refer only to the sample(s) tested unless otherwise stated.
The authenticity of the test report, contact shchoi@kes.co.kr

Radiated Electric Field Immunity

- 12 V (dc) Mode



- PoE Mode



This report shall not be reproduced except in full, without the written approval of KES Co., Ltd.
The results shown in this test report refer only to the sample(s) tested unless otherwise stated.
The authenticity of the test report, contact shchoi@kes.co.kr

Electrical Fast Transients/Bursts

- 12 V (dc) Mode



This report shall not be reproduced except in full, without the written approval of KES Co., Ltd.
The results shown in this test report refer only to the sample(s) tested unless otherwise stated.
The authenticity of the test report, contact shchoi@kes.co.kr

- PoE Mode



Surge Transients

- 12 V (dc) Mode



- PoE Mode



This report shall not be reproduced except in full, without the written approval of KES Co., Ltd.
The results shown in this test report refer only to the sample(s) tested unless otherwise stated.
The authenticity of the test report, contact shchoi@kes.co.kr

Conducted Disturbance

- 12 V (dc) Mode



This report shall not be reproduced except in full, without the written approval of KES Co., Ltd.
The results shown in this test report refer only to the sample(s) tested unless otherwise stated.
The authenticity of the test report, contact shchoi@kes.co.kr

- PoE Mode





KES Co., Ltd.

3701, 40, Simin-daero 365beon-gil,
Dongan-gu, Anyang-si, Gyeonggi-do, 14057, Korea
Tel: +82-31-425-6200 / Fax: +82-31-424-0450
www.kes.co.kr

Test report No.:
KES-E1-16T0257-R3
Page (70) of (77)

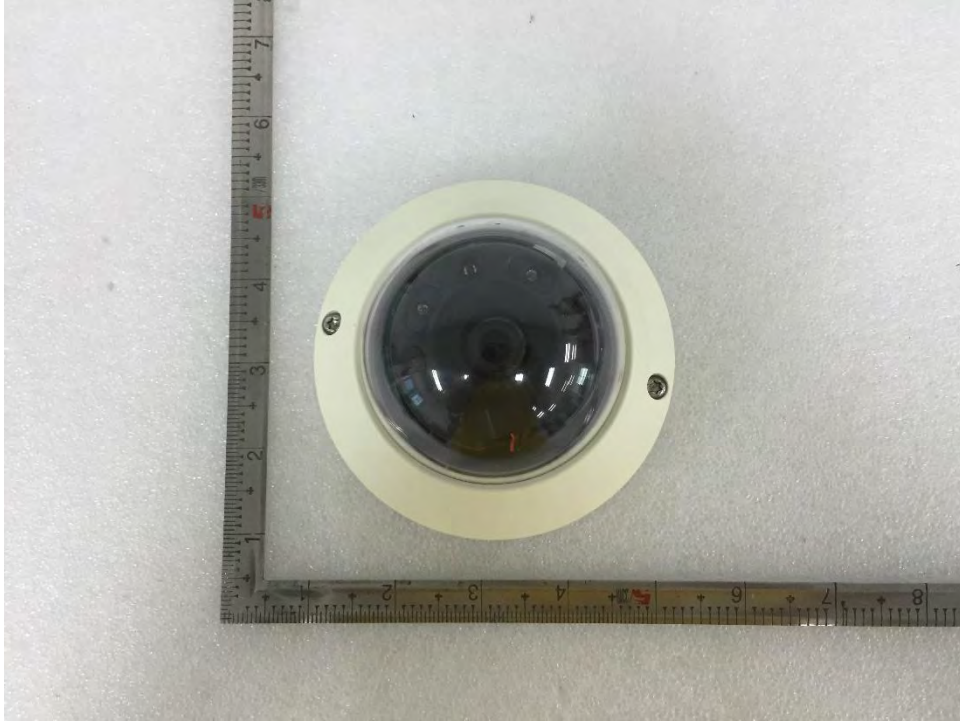
Voltage Dips and Short Interruptions

N/A

This report shall not be reproduced except in full, without the written approval of KES Co., Ltd.
The results shown in this test report refer only to the sample(s) tested unless otherwise stated.
The authenticity of the test report, contact shchoi@kes.co.kr

EUT External Photographs

(Top)



(Bottom)



This report shall not be reproduced except in full, without the written approval of KES Co., Ltd.
The results shown in this test report refer only to the sample(s) tested unless otherwise stated.
The authenticity of the test report, contact shchoi@kes.co.kr

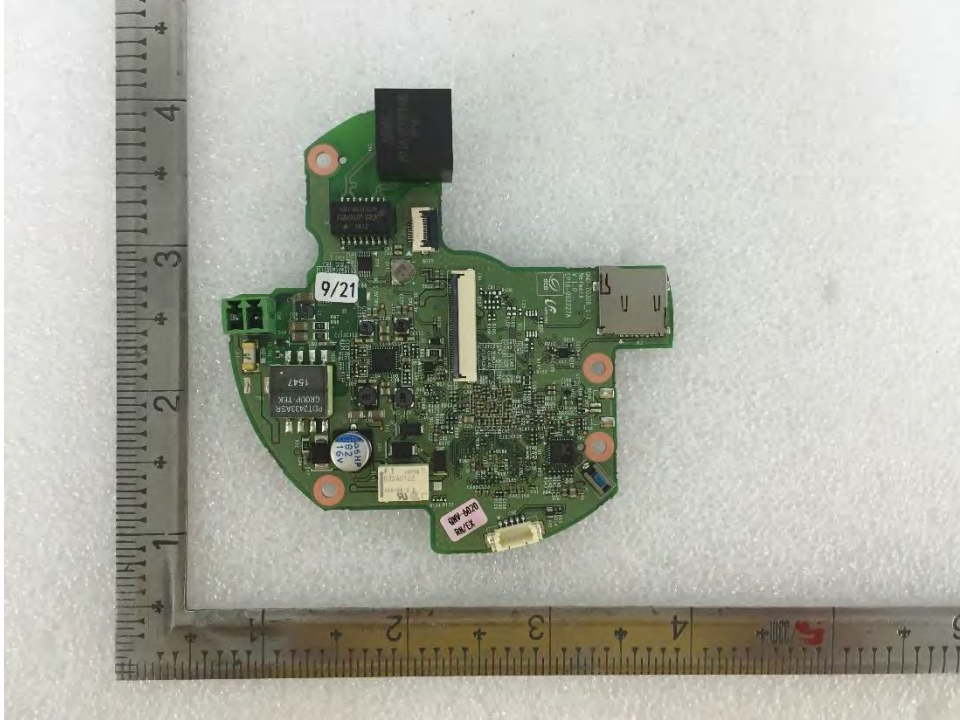
EUT Internal Photographs

(Internal View)

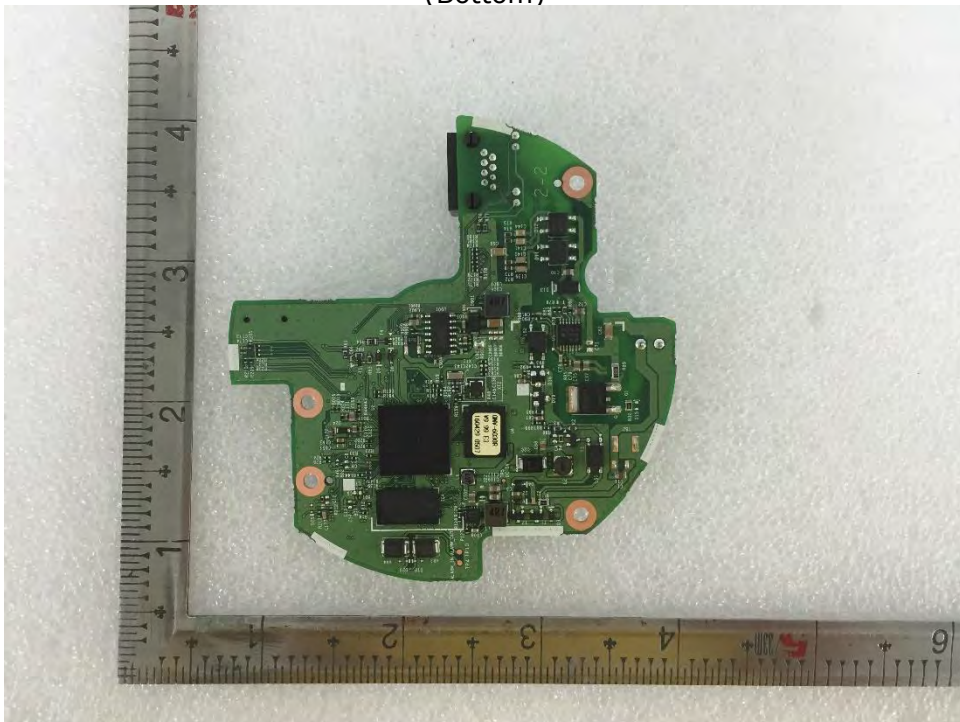


Main Board EUT Internal View – Main Board

(Top)



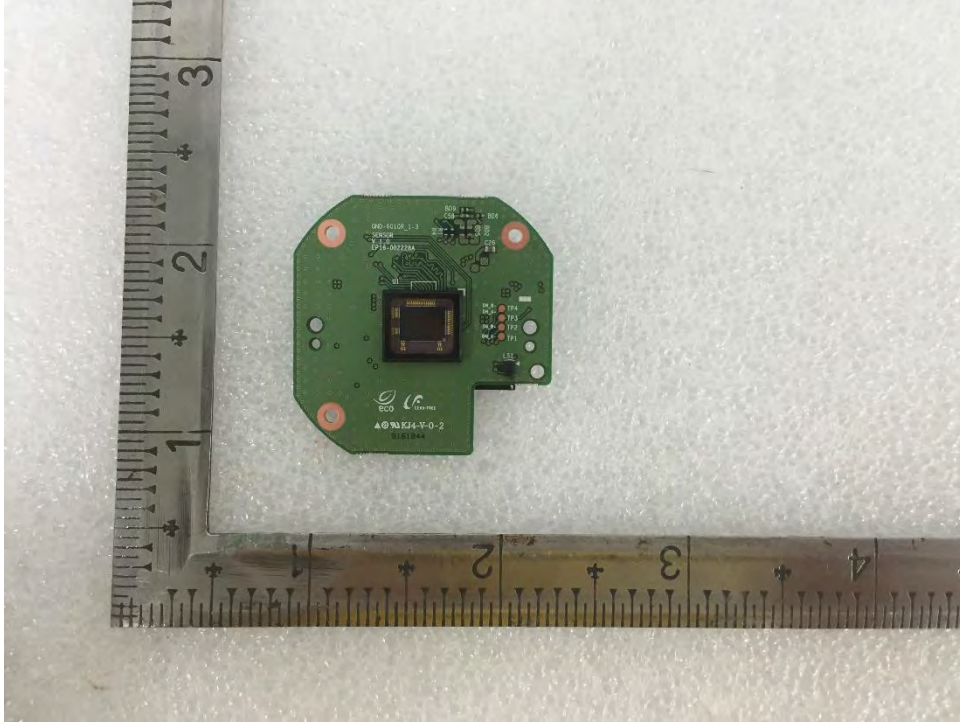
(Bottom)



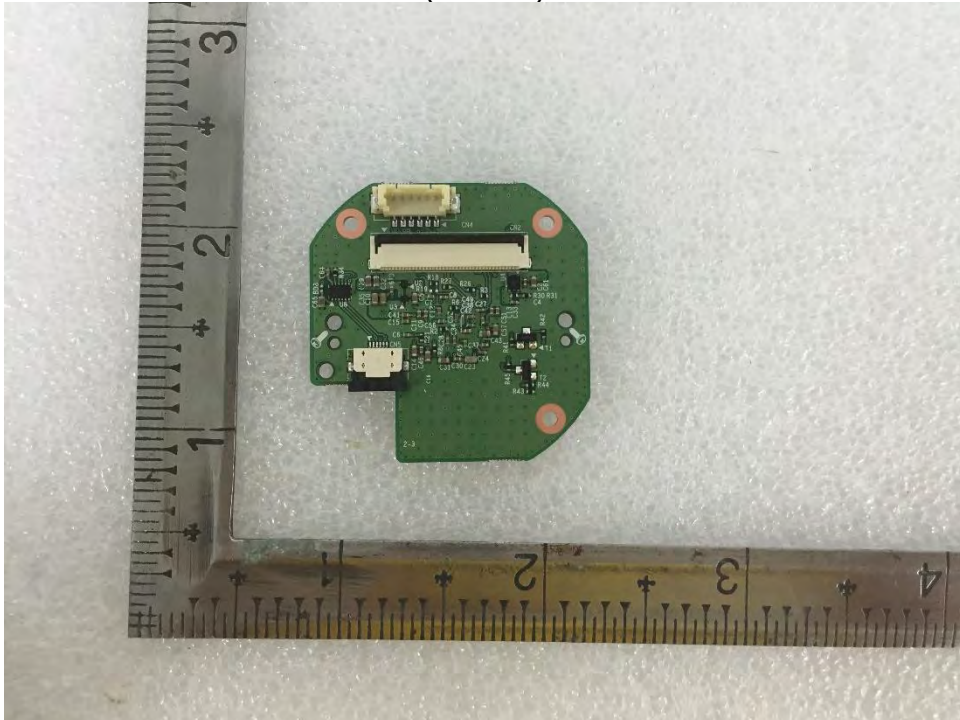
This report shall not be reproduced except in full, without the written approval of KES Co., Ltd.
The results shown in this test report refer only to the sample(s) tested unless otherwise stated.
The authenticity of the test report, contact shchoi@kes.co.kr

Main Board EUT Internal View – lens Board

(Top)



(Bottom)



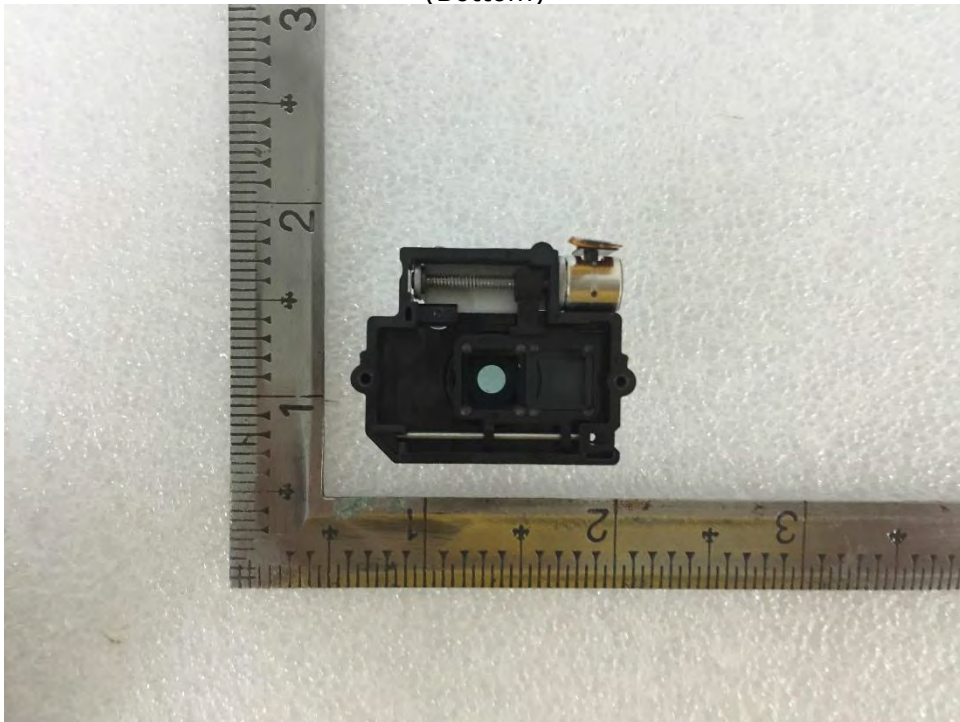
This report shall not be reproduced except in full, without the written approval of KES Co., Ltd.
The results shown in this test report refer only to the sample(s) tested unless otherwise stated.
The authenticity of the test report, contact shchoi@kes.co.kr

Main Board EUT Internal View – lens

(Top)



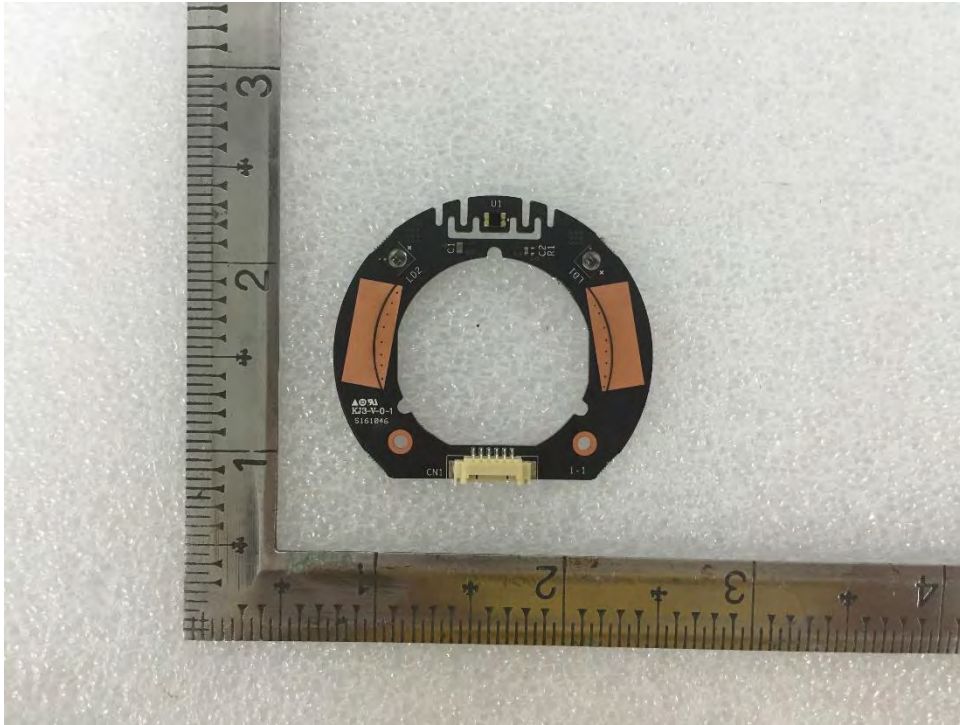
(Bottom)



This report shall not be reproduced except in full, without the written approval of KES Co., Ltd.
The results shown in this test report refer only to the sample(s) tested unless otherwise stated.
The authenticity of the test report, contact shchoi@kes.co.kr

Main Board EUT Internal View – IR Board

(Top)

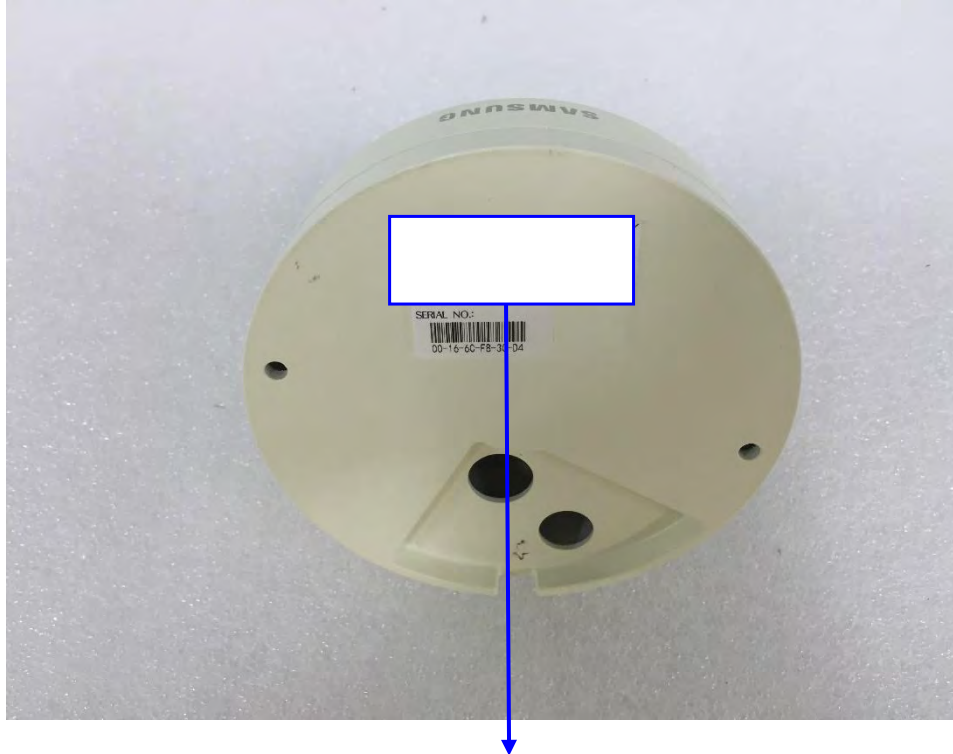


(Bottom)



This report shall not be reproduced except in full, without the written approval of KES Co., Ltd.
The results shown in this test report refer only to the sample(s) tested unless otherwise stated.
The authenticity of the test report, contact shchoi@kes.co.kr

Label and Location



NETWORK CAMERA

Model No : QNV-6020R

Manufacturer : Hanwha Techwin (Tianjin) Co.,Ltd.

Made in China