



WISENET


# F/W Upgrade\_BioEntry W2

Solution Planning Team | 09th.Jun. 2017

Copyright © 2017 Hanwha Techwin. All rights reserved

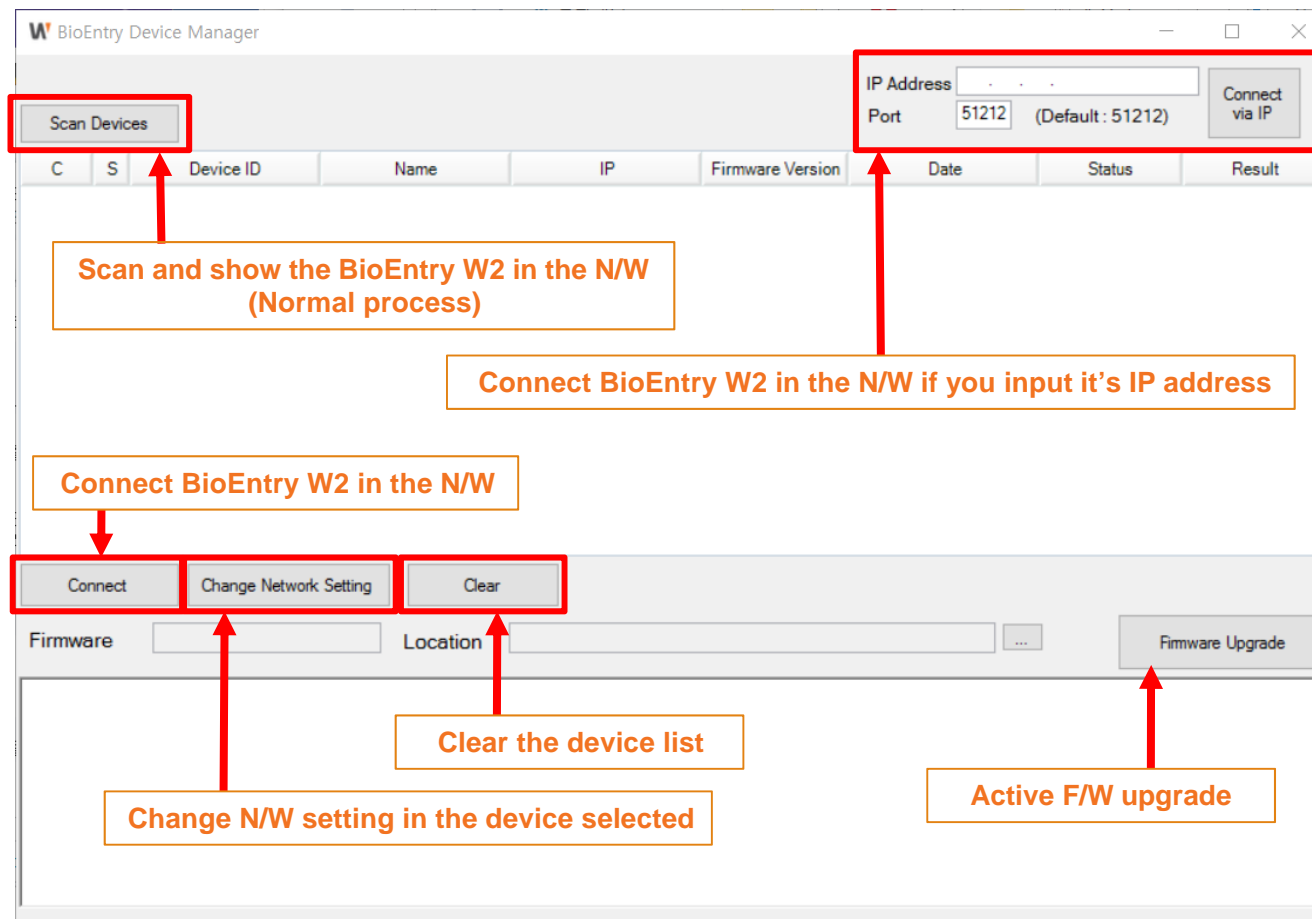


## Open the BioEntry Manager

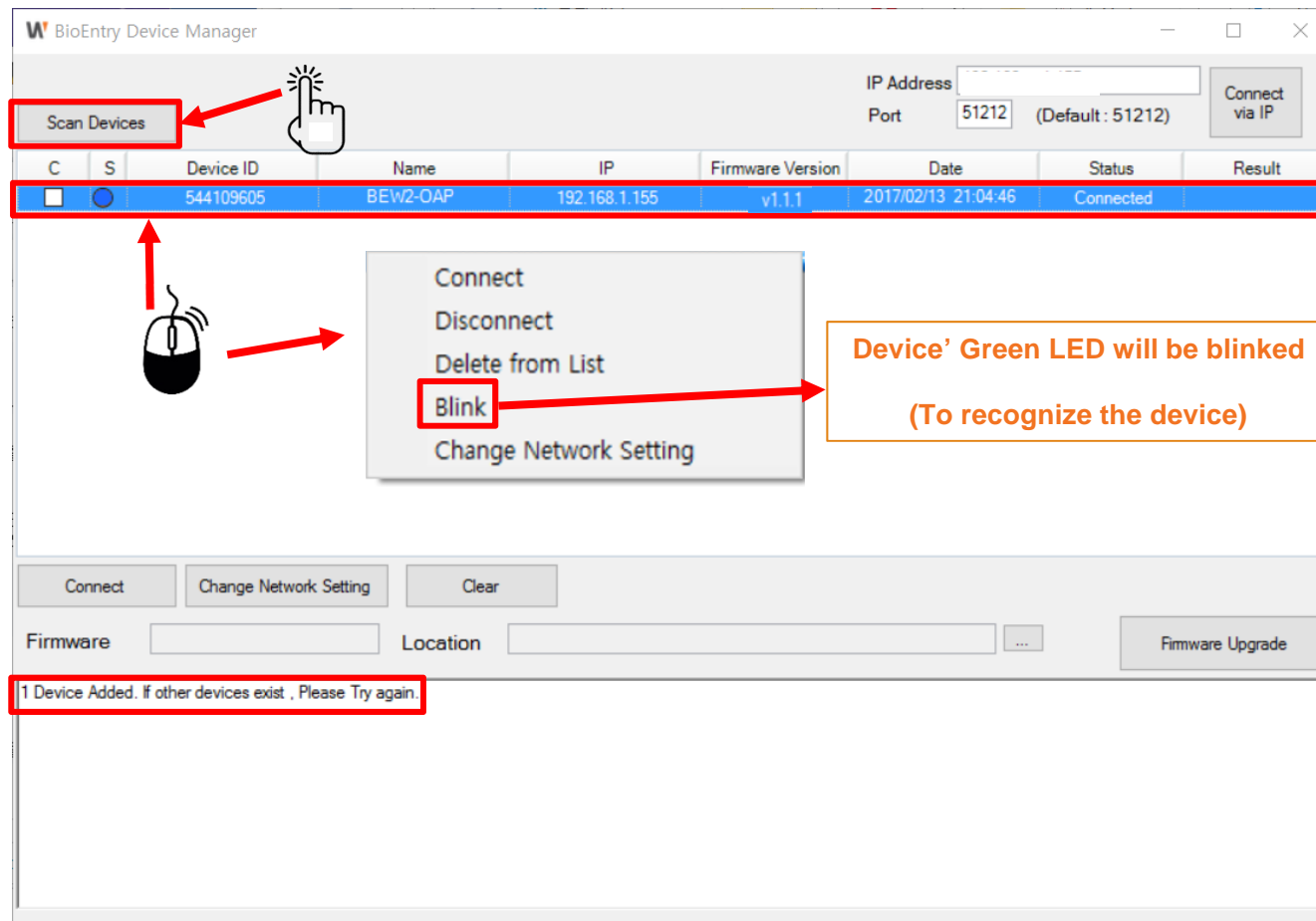


wacslog	2017-05-13 오전...	파일 폴더	
<b>BioEntryManager</b>	2017-04-28 오후...	응용 프로그램	152KB
BioEntryManager.exe.config	2017-04-20 오전...	CONFIG 파일	1KB
BioEntryManager.pdb	2017-04-28 오후...	PDB 파일	76KB
BioEntryManager.vshost	2017-04-28 오후...	응용 프로그램	23KB
BioEntryManager.vshost.exe.config	2017-04-20 오전...	CONFIG 파일	1KB
BioEntryManager.vshost.exe.manifest	2016-07-16 오후...	MANIFEST 파일	1KB
BS_SDK_V2.dll	2017-03-24 오후...	응용 프로그램 확장	1,292KB
Htw.Wacs.Api.dll	2017-04-28 오후...	응용 프로그램 확장	153KB
Htw.Wacs.Api.pdb	2017-04-28 오후...	PDB 파일	224KB
Htw.Wacs.Common.Lib.Utilities.dll	2017-04-28 오후...	응용 프로그램 확장	8KB
Htw.Wacs.Common.Lib.Utilities.pdb	2017-04-28 오후...	PDB 파일	24KB
Htw.Wacs.Common.Log4NetLogger.dll	2017-04-28 오후...	응용 프로그램 확장	7KB
Htw.Wacs.Common.Log4NetLogger.pdb	2017-04-28 오후...	PDB 파일	16KB
Htw.Wacs.Common.Logger.dll	2017-04-28 오후...	응용 프로그램 확장	5KB
Htw.Wacs.Common.Logger.pdb	2017-04-28 오후...	PDB 파일	8KB
Htw.Wacs.Common.Rabbitry.dll	2017-04-28 오후...	응용 프로그램 확장	17KB
Htw.Wacs.Common.Rabbitry.pdb	2017-04-28 오후...	PDB 파일	36KB
Htw.Wacs.SiteManager.SupremaControll...	2017-04-28 오후...	응용 프로그램 확장	79KB
Htw.Wacs.SiteManager.SupremaControll...	2017-04-28 오후...	PDB 파일	44KB
Infragistics4.Shared.v11.2.dll	2012-12-18 오후...	응용 프로그램 확장	280KB
Infragistics4.Shared.v11.2	2012-12-18 오후...	XML 문서	415KB
Infragistics4.Win.Misc.v11.2.dll	2012-12-18 오후...	응용 프로그램 확장	1,156KB
Infragistics4.Win.Misc.v11.2	2011-11-01 오전...	XML 문서	2,338KB
Infragistics4.Win.UltraWinEditors.v11.2.dll	2012-12-18 오후...	응용 프로그램 확장	492KB

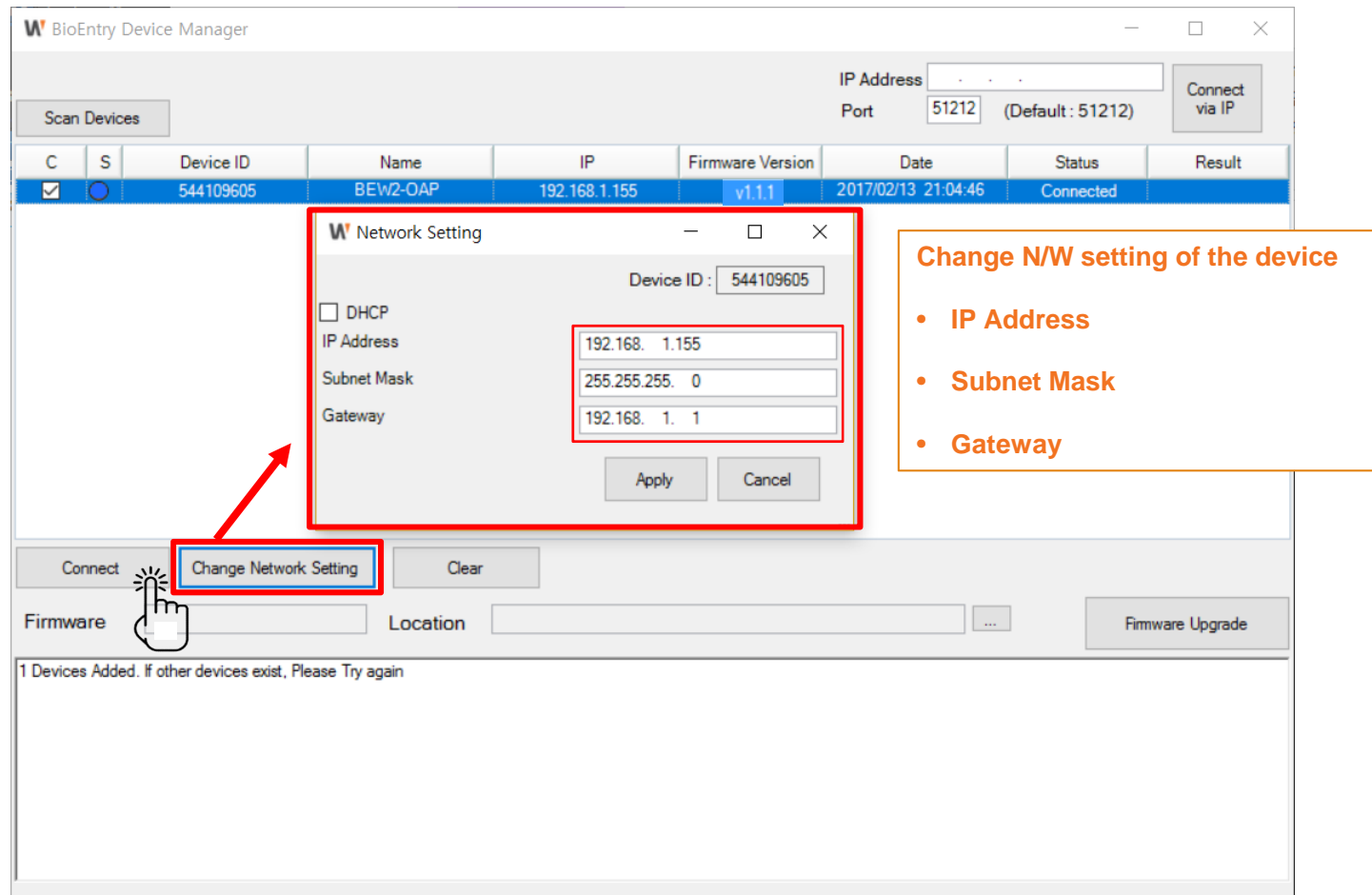
## Main screen of the BioEntry Manager



## 1. Device search



## 2. Change Network Setting



### 3. F/W upgrade – Select the device

BioEntry Device Manager

IP Address: 192.168. 1.155  
Port: 51212 (Default : 51212)  
Connect via IP

Scan Devices

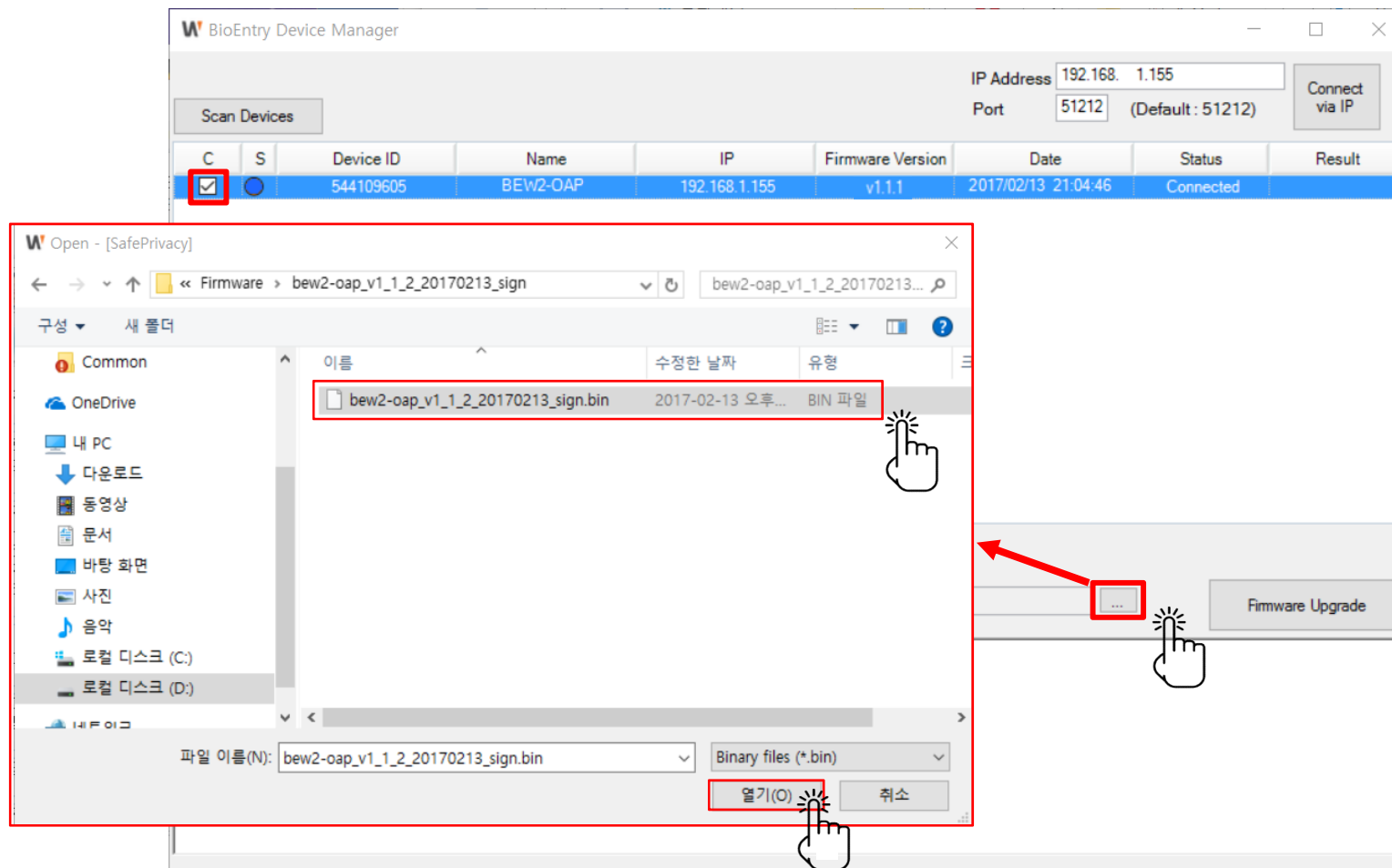
C	S	Device ID	Name	IP	Firmware Version	Date	Status	Result
<input checked="" type="checkbox"/>	<input type="radio"/>	544109605	BEW2-OAP	192.168.1.155	v1.1.1	2017/02/13 21:04:46	Connected	

Connect Change Network Setting Clear

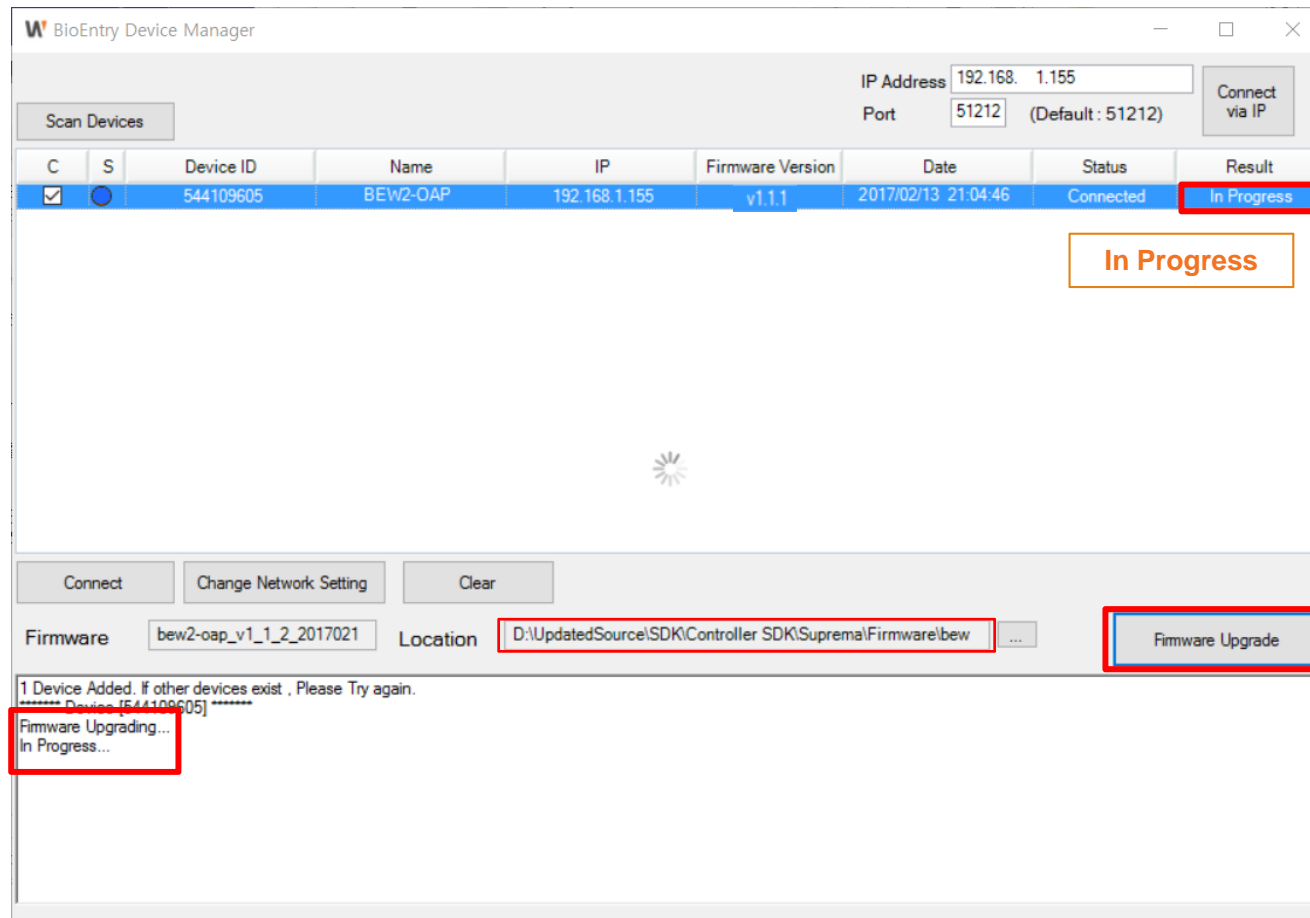
Firmware Location Firmware Upgrade

1 Device Added. If other devices exist , Please Try again.

#### 4. F/W upgrade – Select the F/W file



## 5. F/W upgrade – F/W upgrade in progress





## 6. F/W upgrade – F/W upgrade is completed

After F/W upgrade is done, the device is disconnected due to rebooting, so F/W version is still previous version.

Upgrade is done

1 Device Added. If other devices exist , Please Try again.  
\*\*\*\*\* Device [544109605] \*\*\*\*\*  
Firmware Upgrading...  
In Progress  
Done  
>>>> Your device[544109605] has been upgraded.  
>>>> The device[544109605] will restart.  
>>>> Successfully upgraded

## 6. F/W upgrade – Final Step

The screenshot shows the BioEntry Device Manager interface. At the top, the IP Address is 192.168.1.155 and the Port is 51212. A 'Connect via IP' button is visible. Below this, a table lists devices. The first device, with ID 192.168.1.155 and Firmware Version v1.1.1, is highlighted. A red box around the 'Connect' button in the context menu points to the second device in the table, which has ID 544109605, Name BEW2-OAP, IP 192.168.1.155, Firmware Version v1.1.2, and Status Connected. A red circle highlights the mouse cursor icon in the context menu. Below the table, the 'Firmware' field is set to 'bew2-oap\_v1\_1\_2\_2017021' and the 'Location' is 'D:\UpdatedSource\SDK\Controller SDK\Suprema\Firmware\bew'. The bottom section shows a log of the upgrade process, including messages like '1 Device Added', 'Firmware Upgrading...', and 'Successfully upgraded'.

C	S	Device ID	Name	IP	Firmware Version	Date	Status	Result
<input checked="" type="checkbox"/>	<input type="checkbox"/>			192.168.1.155	v1.1.1	2017/02/13 21:04:46	Disconnected	Success

S	Device ID	Name	IP	Firmware Version	Date	Status
<input type="radio"/>	544109605	BEW2-OAP	192.168.1.155	v1.1.2	2017/02/13 21:04:46	Connected

Log:

```
1 Device Added. If other devices exist , Please Try again.
***** Device [544109605] *****
Firmware Upgrading...
In Progress...
Done
>>>> Your device[544109605] has been upgraded.
>>>> The device[544109605] will restart.
>>>> Successfully upgraded
```

It takes 3~4mins to be changed from Red LED to GREEN LED in the device due to rebooting



# Safeguard your Life

Hanwha Techwin Co.,Ltd.

6, Pangyo-ro 319beon-gil, bundang-gu,  
Seongnam-si, Gyeonggi-do, 13488, Korea  
TEL 8270.7147.7679 FAX 8231.8018.3711  
[www.hanwhatechwin.com](http://www.hanwhatechwin.com)

Copyright © 2016 Hanwha Techwin. All rights reserved.