

CERTIFICATE of EMC Compliance

Report No : EMC-FCC-1950
Type of equipment : Network Camera
Model Name : SNV-6012MN
Applicant : Samsung Techwin Co., Ltd.
#42 Seongju-Dong, Changwon-Shi,
Kyungsangnam-Do, Korea
Manufacturer#1 : Samsung Techwin Co., Ltd.
#42 Seongju-Dong, Changwon-Shi,
Kyungsangnam-Do, Korea
Manufacturer#2 : TIANJIN SAMSUNG TECHWIN
OPTO-ELECTRONIC CO., LTD
No.11 Weiliu Road. Micro-Electronic Industrial
Park Jingang Road Tianjin 300385, China
Test standards : FCC part 15 subpart B, Class A
Classification : Verification

The above equipment was tested by EMC compliance Testing Laboratory for with the requirements of FCC Rules and Regulations. The results of testing in this report apply to the product / system which was tested only.

These results are deemed satisfactory evidence of compliance with ICES-003 of the Canadian Interference-Causing Equipment Regulations.

Laboratory

EMC compliance Ltd.
480-5 Sin-dong, Yeongtong-gu,
Suwon-city, Gyeonggi-do, 443-390, Korea

Tel: 82 31 336 9919
Fax: 82 505 299 8311



Yeom, Han-Seok/ Manager

EMI TEST REPORT

Test report No : EMC-FCC-1950
Type of Equipment : Network Camera
Model Name : SNV-6012MN
Applicant : Samsung Techwin Co., Ltd.
#42 Seongju-Dong, Changwon-Shi,
Kyungsangnam-Do, Korea
Manufacturer #1 : Samsung Techwin Co., Ltd.
#42 Seongju-Dong, Changwon-Shi,
Kyungsangnam-Do, Korea
Manufacturer #2 : TIANJIN SAMSUNG TECHWIN
OPTO-ELECTRONIC CO., LTD
No.11 Weiliu Road. Micro-Electronic Industrial
Park Jingang Road Tianjin 300385, China
Test standards : FCC part 15 subpart B, Class A
Classification : Verification
Test Procedure and Items
- Radiated Emissions Measurement : ANSI C63.4-2009
Testing Laboratory : EMC Compliance Ltd.
Test result : Complied

The above equipment was tested by EMC compliance Testing Laboratory for compliance with the requirements of FCC Rules and Regulations. The results of testing in this report apply to the product/system which was tested only. Other similar equipment will not necessarily produce the same results due to production tolerance and measurement uncertainties.

These results are deemed satisfactory evidence of compliance with ICES-003 of the Canadian Interference-Causing Equipment Regulations.

Date of receipt: 2013. 06. 04

Date of testing: 2013. 06. 10

Issued date: 2013. 06. 13

Tested by:


BEAK, JEONG-SOO

Approved by:


YEOM, HAN-SEOK

Contents

1. Applicant information	3
2. Laboratory information	4
3. Test system configuration	5
3.1 Operation environment	5
3.2 Measurement Uncertainty	6
4. Description of E.U.T.	7
4.1 General information.....	7
4.2 Product description.....	9
4.3 Auxiliary equipments.....	9
4.4 Test configuration	10
4.5 Operating conditions	10
5. Summary of test results	11
5.1 Summary of EMI emission test results.....	11
6. Test results	12
6.1 Radiated Emission	12
7. E.U.T. photographs	18

1. Applicant information

Applicant: Samsung Techwin Co., Ltd.
Address: #42 Seongju-Dong, Changwon-Shi,
Kyungsangnam-Do, Korea
Telephone: +82-70-7147-8361
Fax: +82-31-277-2784
E-mail: js2002.kang@samsung.com
Contact name: **Kang Jei Soon**

Manufacturer#1: Samsung Techwin Co., Ltd.
Address: #42 Seongju-Dong, Changwon-Shi,
Kyungsangnam-Do, Korea
Telephone: +82-70-7147-8361
Fax: +82-31-277-2784
E-mail: js2002.kang@samsung.com
Contact name: **Kang Jei Soon**

Manufacturer#2: TIANJIN SAMSUNG TECHWIN OPTO-ELECTRONIC CO., LTD
Address: No.11 Weiliu Road, Micro-Electronic Industrial Park
Jingang Road Tianjin 300385, China

2. Laboratory information

Address

EMC compliance Ltd.

480-5 Sin-dong, Yeongtong-gu, Suwon-city, Gyeonggi-do, 443-390, Korea

Telephone Number: 82 31 336 9919

Facsimile Number: 82 505 299 8311

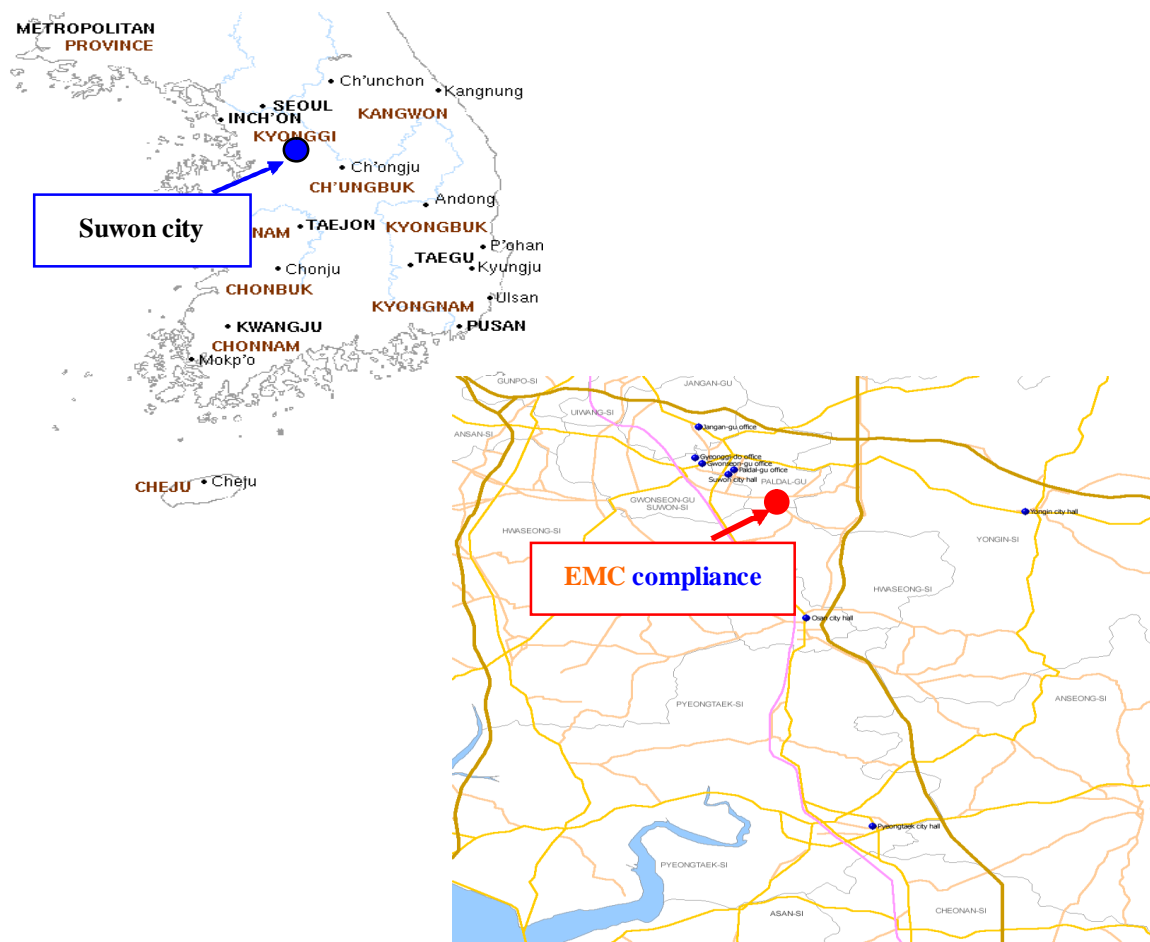
FCC CAB.: KR0040

VCCI Registration No. : R-3327, G-198, C-3706, T-1849

Industry Canada Registration No.: 8035A

KOLAS NO.: 231

SITE MAP



3. Test system configuration

3.1 Operation environment

	Temperature	Humidity	Pressure
Chamber(10 m)	: 24 °C	39 % R.H.	-

Test site

These testing items were performed following locations;

Test item	Test site
Conducted Emission	Shielded Room
Radiated Emission	10 m Chamber

3.2 Measurement Uncertainty

All measurements involve certain levels of uncertainties, especially in field of EMC.

The factors contributing to uncertainties are test receiver, cable loss, antenna factor calibration, Antenna directivity, antenna factor variation with height, antenna phase center variation, antenna frequency interpolation, measurement distance variation, site imperfection, mismatch, and system repeatability. Based on CISPR 16-4-2, the measurement uncertainty level with a 95 % confidence level was applied.

Conducted emission measurement (C.L: Approx 95 %, k = 2)		
Shielded Room (CE#1)	9 kHz ~ 150 kHz: ± 3.82 dB 150 kHz ~ 30 MHz: ± 3.43 dB	
Shielded Room (CE#2)	9 kHz ~ 150 kHz: ± 3.82 dB 150 kHz ~ 30 MHz: ± 3.43 dB	
Shielded Room (CE#3)	9 kHz ~ 150 kHz: ± 4.00 dB 150 kHz ~ 30 MHz: ± 3.63 dB	
Radiated Emission measurement (C.L: Approx 95 %, k = 2)		
10 m Chamber (#F4)	30 MHz ~ 300 MHz	3 m: + 4.56 dB, - 4.58 dB 10 m: + 4.56 dB, - 4.56 dB
	300 MHz ~ 1 000 MHz	3 m: + 4.84 dB, - 4.85 dB 10 m: + 4.71 dB, - 4.72 dB
	1 GHz ~ 6 GHz	3 m: + 6.19 dB, - 6.20 dB
	6 GHz ~ 18 GHz	3 m: + 6.41 dB, - 6.53 dB
10 m Chamber (#F2)	30 MHz ~ 300 MHz	3 m: + 4.86 dB, - 4.88 dB 10 m: + 4.86 dB, - 4.86 dB
	300 MHz ~ 1 000 MHz	3 m: + 4.98 dB, - 4.99 dB 10 m: + 4.85 dB, - 4.87 dB
	1 GHz ~ 6 GHz	3 m: + 6.19 dB, - 6.20 dB
	6 GHz ~ 18 GHz	3 m: + 6.41 dB, - 6.53 dB

4. Description of E.U.T.

4.1 General information

Video	
Imaging Device	1/2.8" PS Exmor 2.38M CMOS (IMX136)
Total Pixels	1952(H) x 1116(V)
Effective Pixels	1944(H) x 1104(V)
Scanning System	Progressive
Min. Illumination	Color : 0.3 Lux (1/30sec, F2.0, 50IRE), 0.005Lux (2sec, F2.0, 50IRE)
S / N Ratio	50dB
Video Out	CVBS : 1.0 Vp-p / 75Ω composite, 720x480(N), 720x576(P), for installation - DIP connector type
Lens	
Focal Length	3.0mm
Max. Aperture Ratio	F2.0
Angular Field of View	H: 103.1°, V: 53.9°, D: 124.5°
Lens Type	Fixed Iris
Mount Type	Board-in type
Operational	
Camera Title	Off / On (Displayed up to 45 characters)
Day & Night	Auto (S/W) / Color / B/W / External / Schedule
Backlight Compensation	Off / BLC
Wide Dynamic Range	100dB ↑
Contrast Enhancement	SSDR (Samsung Super Dynamic Range) (Off / On)
Digital Noise Reduction	SSNR III (2D+3D Noise Filter) (Off / On)
Digital Image Stabilization	Off / On
Defog	Auto/Manual/Off
Motion Detection	Off / On (4ea 4 Points Polygonal zones)
Privacy Masking	Off / On (32 Zones with 4 Points of Polygonal)
Gain Control	Off / Low / Middle / High
White Balance	ATW / AWC / Manual / Indoor / Outdoor
Electronic Shutter Speed	Minimum / Maximum / Anti flicker (2 ~ 1/12,000sec)
Flip / Mirror	Off / On
Intelligent Video Analytics	Tampering, Virtual Line, Enter/Exit, Appear / Disappear, Face Detection
Alarm Triggers	Motion detection, Face Detecton, Video Analytics
Alarm events	File upload via FTP and E-Mail Notification via E-Mail, TCP and HTTP local storage(SD/SDHC/SDXC) recording at Network disconnected & Event (Alarm Triggers)
Network	
Ethernet	10Base-T / 100Base-TX, M12 connector (female)
Video Compression Format	H.264 (MPEG-4 Part 10/AVC), Motion JPEG
Resolution	1920x1080 / 1280x1024 / 1280x960 / 1280x720 / 1024x768 / 800x600 / 800x450 / 640x480 / 640x360 / 320x240 / 320x180
Max. Framerate	H.264 : Max 60fps at all resolutions Motion JPEG : 1920x1080 / 1280x1024 / 1280x960 / 1280x720 / 1024x768 : Max. 15 fps 800x600 / 800x450 / 640x480 / 640x360 / 320x240 / 320x180 : Max. 30fps
Smart Codec	
Video Quality Adjustment	H.264 : Compression Level, Target Bitrate Level Control MJPEG : Quality Level Control
Bitrate Control Method	H.264 : CBR or VBR, Motion JPEG : VBR

Streaming Capability	Multiple Streaming (Up to 10 Profiles)
Audio I/O	N/A
Audio Compression Format	N/A
Audio Communication	N/A
IP	IPv4, IPv6
Protocol	TCP/IP, UDP/IP, RTP(UDP), RTP(TCP), RTCP, RTSP, NTP, HTTP, HTTPS, SSL, DHCP, PPPoE, FTP, SMTP, ICMP, IGMP, SNMPv1/v2c/v3(MIB-2), ARP, DNS, DDNS, QoS, PIM-SM, UPnP, Bonjour
Security	HTTPS(SSL) Login Authentication Digest Login Authentication IP Address Filtering User access Log 802.1x Authentication
Streaming Method	Unicast / Multicast
Max. User Access	15 users at Unicast Mode
Memory Slot	Micro SD/SDHC/SDXC - Recorded data in the SDX/SDHC/SD memory card can be downloaded
Application Programming Interface	ONVIF Profile S HTTP API v2.0 SVNP 1.2
Webpage Language	English, French, German, Spanish, Italian, Chinese, Korean, Russian, Japanese, Swedish, Danish, Portuguese, Turkish, Polish, Czech, Rumanian, Serbian, Dutch, Croatia, Hungary, Greek, Finnish, Norwegian
Web Viewer	Supported OS : Windows XP / VISTA / 7 / 8, MAC OS X 10.7 Supported Browser : Microsoft Internet Explorer (Ver. 10, 9, 8, 7), Mozilla Firefox (Ver. 19, 18, 17, 16, 15, 14, 13, 12, 11, 10, 9), Google Chrome (Ver. 25, 24, 23, 22, 21, 20, 19, 18, 17, 16, 15), Apple Safari (Ver. 6.0.2(Mac OS X 10.8, 10.7 Only), 5.1.7) * Mac OS X Only
Central Management Software	SmartViewer 4.0
Mobile Viewer	iPOLiS mobile v2.0 or Higher
Environmental	
Operating Temperature / Humidity	-30 °C ~ +55 °C (-40 °F ~ 131 °F) / Less than 90% RH
Storage Temperature / Humidity	-30 °C ~ +60 °C (-22 °F ~ +140 °F) / Less than 90% RH
Ingress Protection	IEC 60529 IP66, NEMA 250 Type 4X
Vibration Resistance	EN 50155 Class T3 (vibration, shock, bump, temperature) EN 50121, ISO 16750-3 (vibration)
Vandal Resistance	IEC 62262 Class IK10 (20J)
UL	UL60590-1
Electrical	
Input Voltage / Current	PoE (Class A type only)
Power Consumption	Max 7.5W
Mechanical	
Color / Material	IVORY / ALUMINUM
Dimension (WxHxD)	135.2 * 124.5 * 54.3
Weight	530g

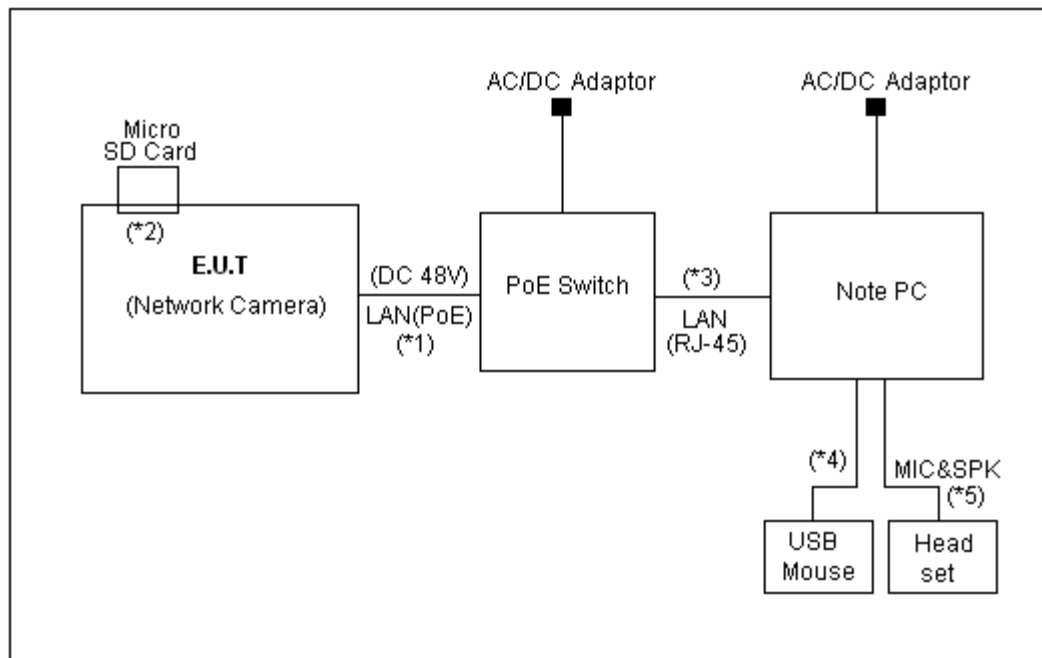
4.2 Product description

Type of product	Network Camera
Model name (Basic)	SNV-6012MN
Model name (Variant)	-
Difference	-
Trade name	-
Serial no	Engineering Sample
Testing voltage	PoE
Product rating	PoE
Internal clock frequency	Above 108 MHz
Note	* PoE Switch was not provided by the manufacturer.

4.3 Auxiliary equipments

Type	Model / Part #	Serial number	Manufacturer
PoE Switch	FS108P	1DL20C3K00541	NETGEAR
Note PC	PSLQ0K-02N005	2A078516Q	TOSHIBA
USB Mouse	1088	8165906051288	Microsoft
Headset	SHS-250V	-	SAMSUNG
Micro SD Card (4 GB)	-	-	Transcend

4.4 Test configuration



Note	Start		End		Cable	
	Name	I/O port	Name	I/O port	Length (m)	Spec.
1	EUT (Network Camera)	LAN(PoE)	PoE Switch	LAN(PoE)	3.0	Shield
2		Micro SD Card	Micro SD Card	Micro SD Card	Direct	-
3	Note PC	LAN(RJ-45)	PoE Switch	LAN(RJ-45)	2.0	Non-Shield
4		USB	USB Mouse	USB	2.0	Shield
5		MIC&SPK	Headset	MIC&SPK	2.0	Non-Shield

4.5 Operating conditions

The EUT was configured as normal intended use.

Test mode	Normal operating
1	Camera operating mode. (Web view)

5. Summary of test results

In the above configuration tested, The EUT complied with the requirement of the specification

5.1 Summary of EMI emission test results

FCC Part 15 Subpart B (Class A)

ANSI C63.4 – 2009

Applied	Test items	Test method	Result
<input type="checkbox"/>	Conducted Emission	ANSI C63.4 – 2009	N/A
<input checked="" type="checkbox"/>	Radiated Emission	ANSI C63.4 – 2009	Complied

6. Test results

6.1 Radiated Emission

Test specification	FCC Part 15, Section 15.109(g), Class A		
Testing voltage	PoE		
Test facility	10 m Chamber (#F4)		
Test distance	10 m, 3 m		
Date	2013. 06. 10		
Temperature (°C)	24 °C	Humidity (% R.H.)	39 % R.H.
Remarks	Complied		

6.1.1 Limits of radiated emission measurement

Frequency [MHz]	Class A (dB(μ V/m)) @ 10 m	Class B (dB(μ V/m)) @ 3 m
30-88	39	40
88-216	43.5	43.5
216-960	46.4	46
Above 960	49.5	54

* Note- Alternative standard: CISPR, Pub. 22 *

6.1.2 Measurement procedure

The test was done at a 10 m chamber with a quasi-peak detector. EUT was placed on a non-metallic table height of 0.8 m above the reference ground plane. Cables were folded back and forth forming a bundle 0.3 m to 0.4 m long and were hanged at a 0.4 m height to the ground plane.

Cables connected to EUT were fixed to cause maximum emission. Test was made with the antenna positioned in both the horizontal and vertical planes of polarization. The measurement antenna was varied in height above the conducting ground plane to obtain the maximum signal strength.

6.1.3 Used equipments

Equipment	Model no.	Serial no.	Makers	Next Cal. Date	Used
Test Receiver	ESCI7	100732	R&S	2014.02.18	<input checked="" type="checkbox"/>
Test Receiver	ESCI	100001	R&S	2013.07.10	<input type="checkbox"/>
Test Receiver	ESCI	100710	R&S	2013.11.06	<input type="checkbox"/>
Bi-Log Antenna	VULB 9168	375	SCHWARZBECK	2013.09.21	<input checked="" type="checkbox"/>
Amplifier	310N	186280	SONOMA INSTRUMENT	2014.02.15	<input checked="" type="checkbox"/>
3 dB Attenuator	8491A	16861	HP	2013.07.10	<input checked="" type="checkbox"/>
Antenna Mast	AM4.0	079/3440509	MATURO	-	<input checked="" type="checkbox"/>
Turn Table	CO2000-SOFT	-	MATURO	-	<input checked="" type="checkbox"/>
Amplifier	8449B	3008A02343	AGILENT	2013.11.06	<input checked="" type="checkbox"/>
Horn ANT	3115	00086706	ETS	2013.11.21	<input checked="" type="checkbox"/>
Spectrum Analyzer	FSP7	100289	R&S	2013.12.14	<input type="checkbox"/>

6.1.4 Sample calculation

The field strength is calculated adding the antenna Factor, cable loss and, Antenna pad adding, subtracting the amplifier gain from the measured reading.

The sample calculation is as follow:

$$\text{Result} = \text{M.R} + \text{C.F}(\text{A.F} + \text{C.L} + 3 \text{ dB Att} - \text{A.G})$$

M.R = Meter Reading

C.F = Correction Factor

A.F = Antenna Factor

C.L = Cable Loss

A.G= Amplifier Gain

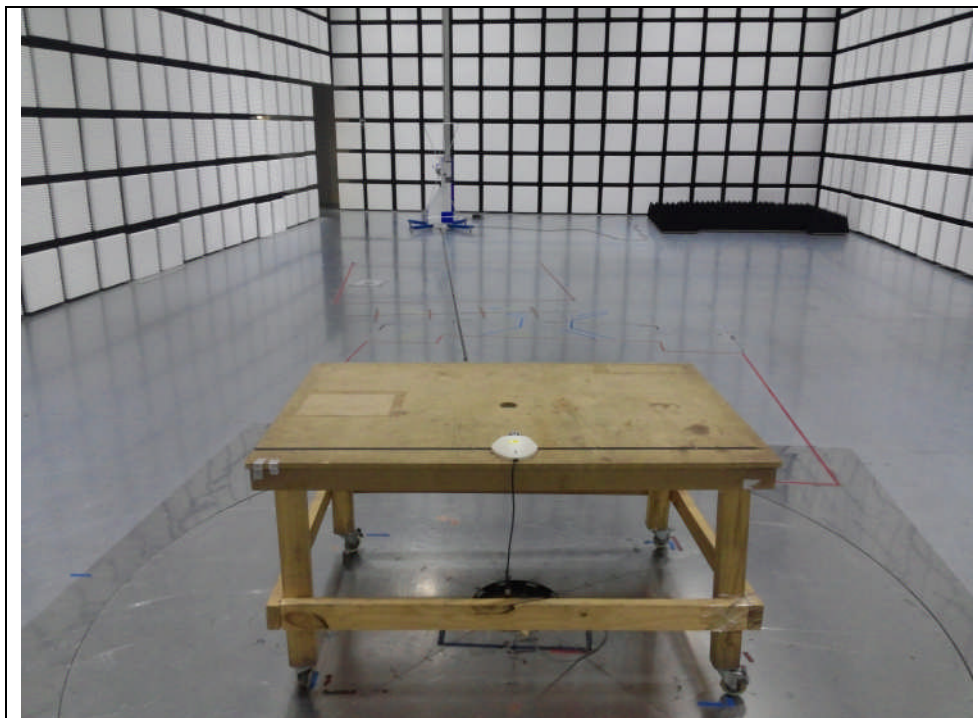
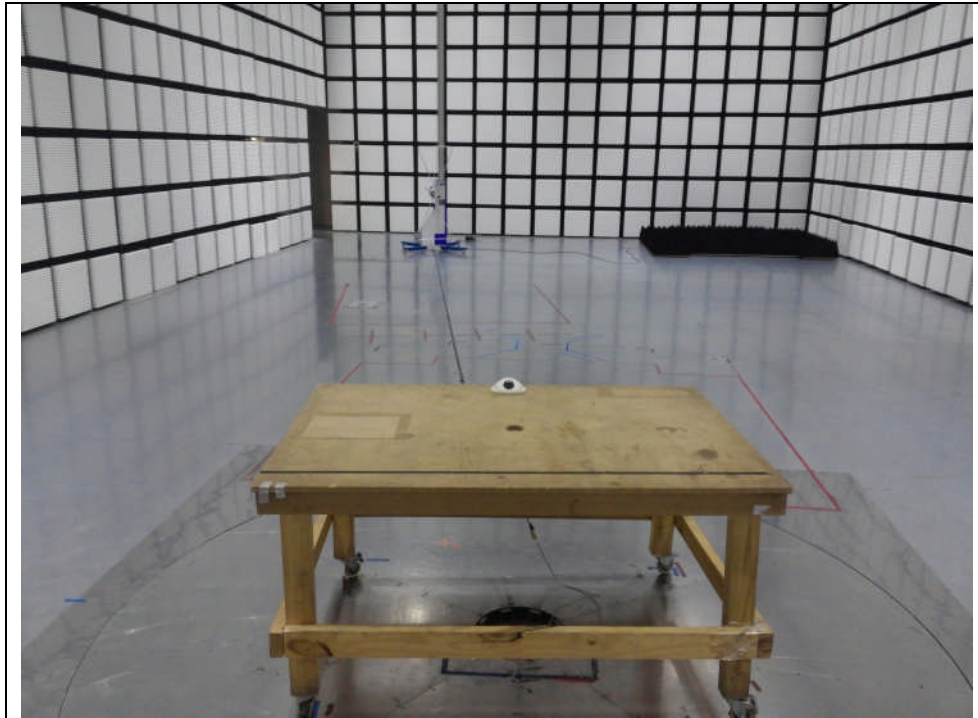
3 dB Att = 3 dB Attenuator

If M.R is 30 dB, A.F 12 dB, C.L 5 dB, 3 dB, A.G 35 dB

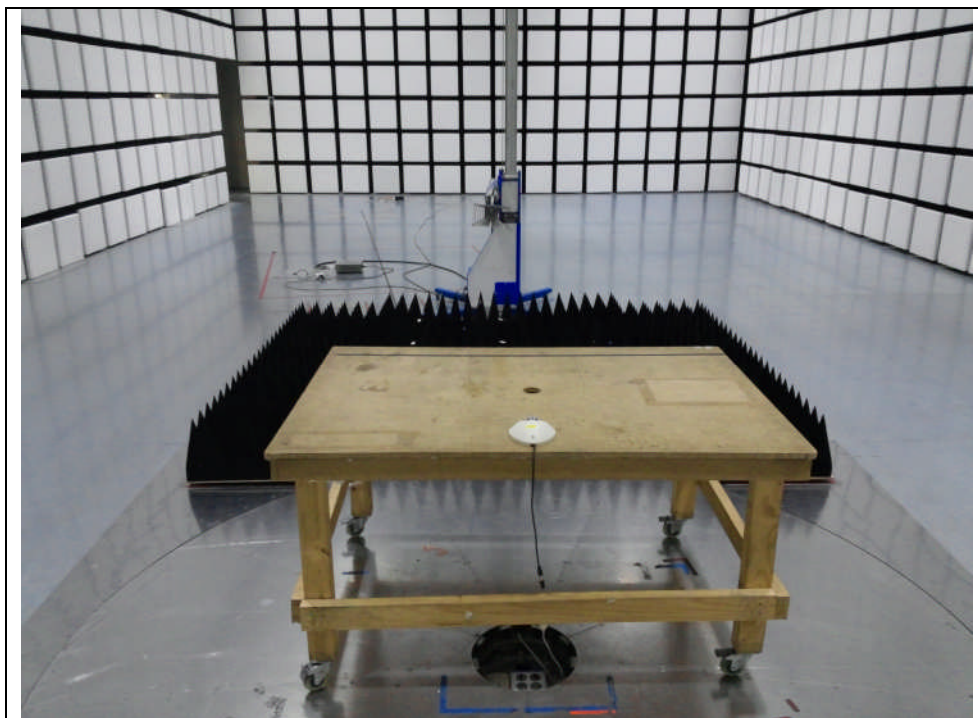
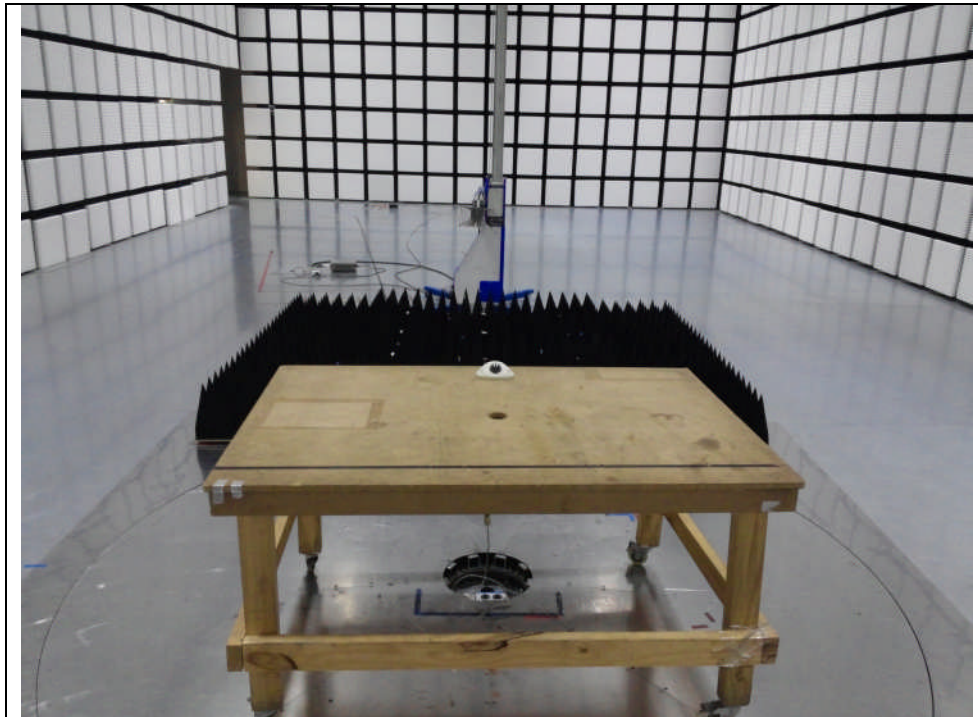
The result is $30 + 12 + 5 + 3 - 35 = 15 \text{ dB}(\mu\text{V/m})$

6.1.5 Photographs of test setup

* 30 MHz ~ 1 GHz



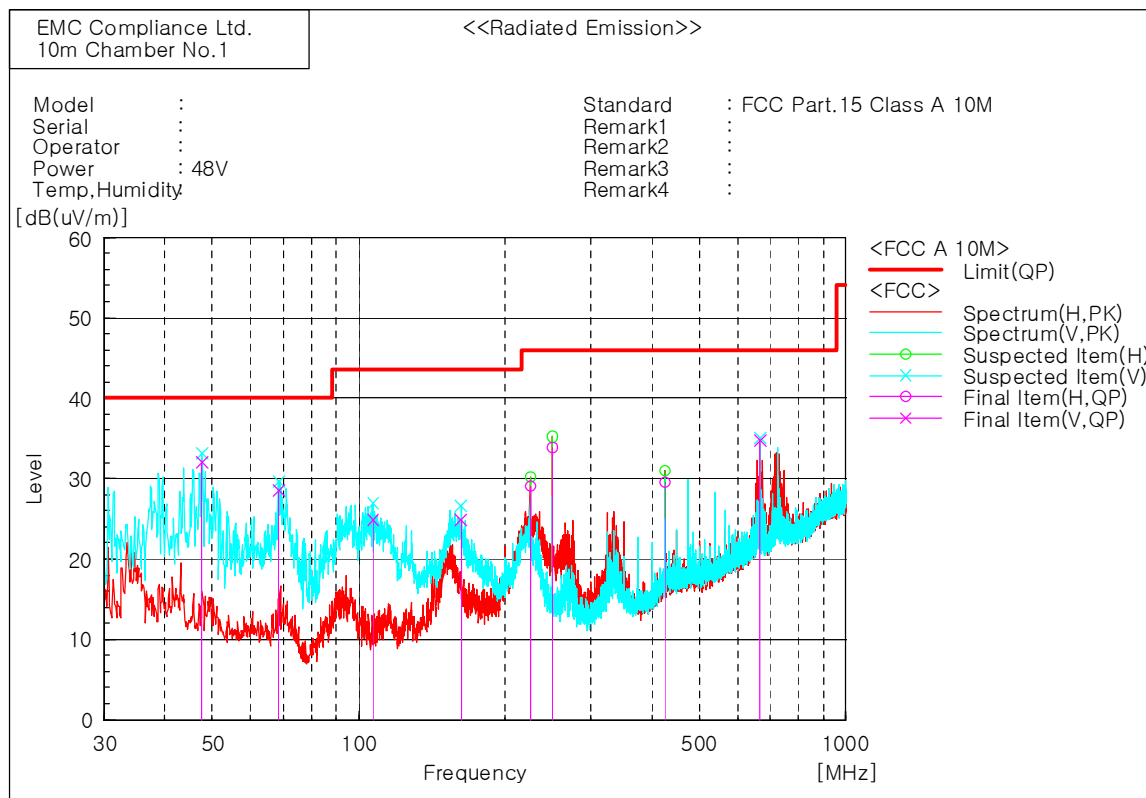
* 1 GHz ~ 6 GHz



6.1.6 Radiated emission measurement result

* Graph and Data

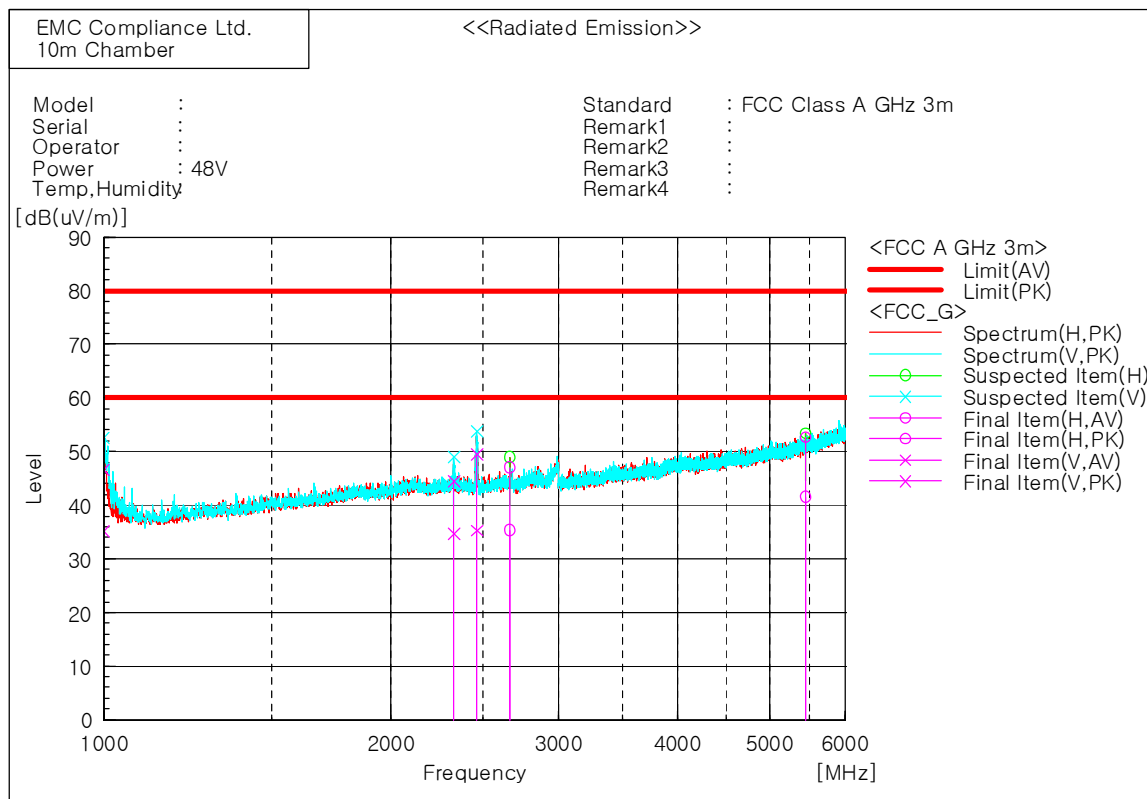
* 30 MHz ~ 1 GHz (SNV-6012MN)



Final Result

No.	Frequency [MHz]	(P)	Reading QP [dB(μV)]	c.f [dB(1/m)]	Result QP [dB(μV/m)]	Limit QP [dB(μV/m)]	Margin QP [dB]	Height [cm]	Angle [deg]
1	47.703	V	47.5	-15.4	32.1	40.0	7.9	100.0	189.3
2	68.436	V	46.0	-17.5	28.5	40.0	11.5	100.0	45.4
3	106.751	V	42.3	-17.4	24.9	43.5	18.6	100.0	62.7
4	162.284	V	38.4	-13.5	24.9	43.5	18.6	100.0	224.2
5	224.970	H	45.0	-15.9	29.1	46.0	16.9	400.0	223.9
6	249.947	H	48.8	-14.9	33.9	46.0	12.1	400.0	260.3
7	425.033	H	38.9	-9.4	29.5	46.0	16.5	400.0	112.6
8	666.078	V	38.8	-4.0	34.8	46.0	11.2	100.0	2.2

* 1 GHz ~ 6 GHz (SNV-6012MN)



Final Result

No.	Frequency [MHz]	(P)	Reading AV [dB(μV)]	Reading PK [dB(μV)]	c. f [dB(1/m)]	Result AV [dB(μV/m)]	Result PK [dB(μV/m)]	Limit AV [dB(μV/m)]	Limit PK [dB(μV/m)]	Margin AV [dB]	Margin PK [dB]	Height [cm]	Angle [deg]
1	1000.000	V	40.2	51.6	-5.0	35.2	46.6	60.0	80.0	24.8	33.4	202.0	161.9
2	2330.625	V	32.3	42.1	2.4	34.7	44.5	60.0	80.0	25.3	35.5	100.0	62.5
3	2462.500	V	32.6	46.8	2.7	35.3	49.5	60.0	80.0	24.7	30.5	202.0	125.3
4	2663.750	H	32.4	44.1	3.0	35.4	47.1	60.0	80.0	24.6	32.9	198.0	354.4
5	5450.000	H	28.9	40.0	12.7	41.6	52.7	60.0	80.0	18.4	27.3	198.0	342.1

7. E.U.T. photographs

Front View



Rear View



Left View



Right View



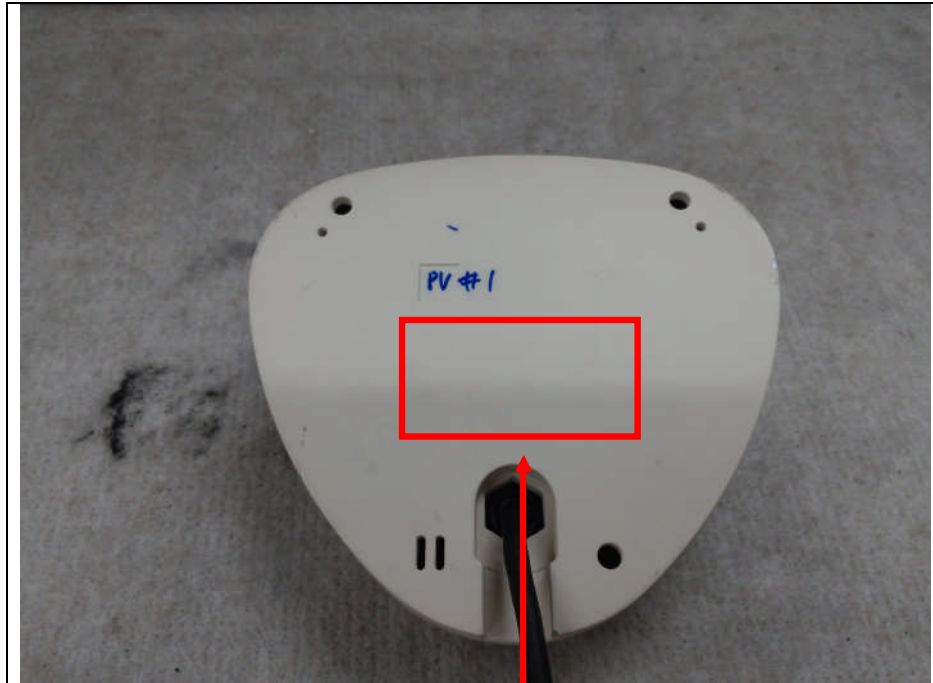
Top View



Bottom View



Label



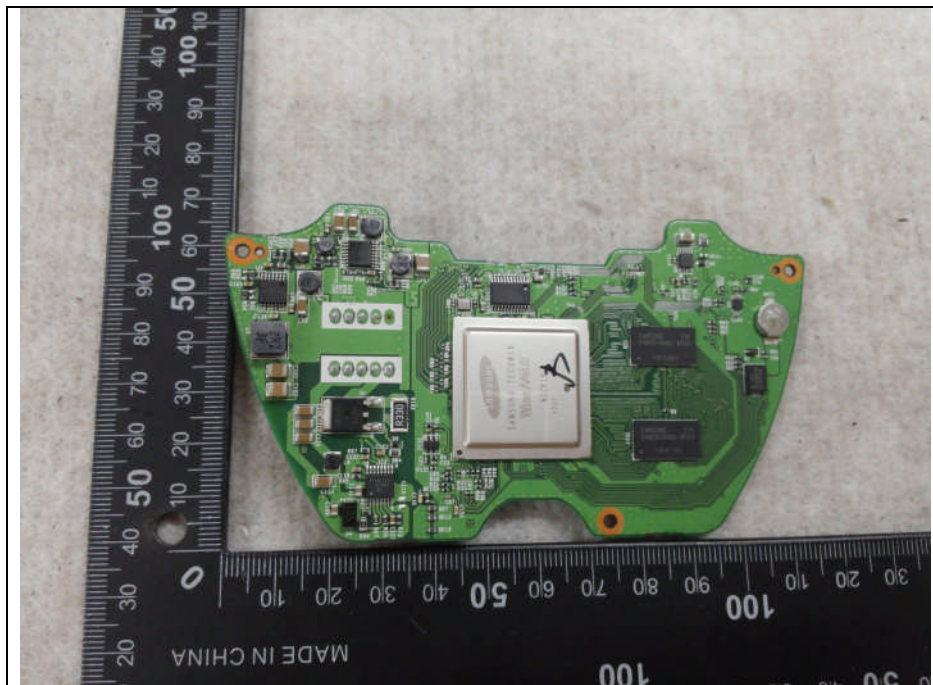
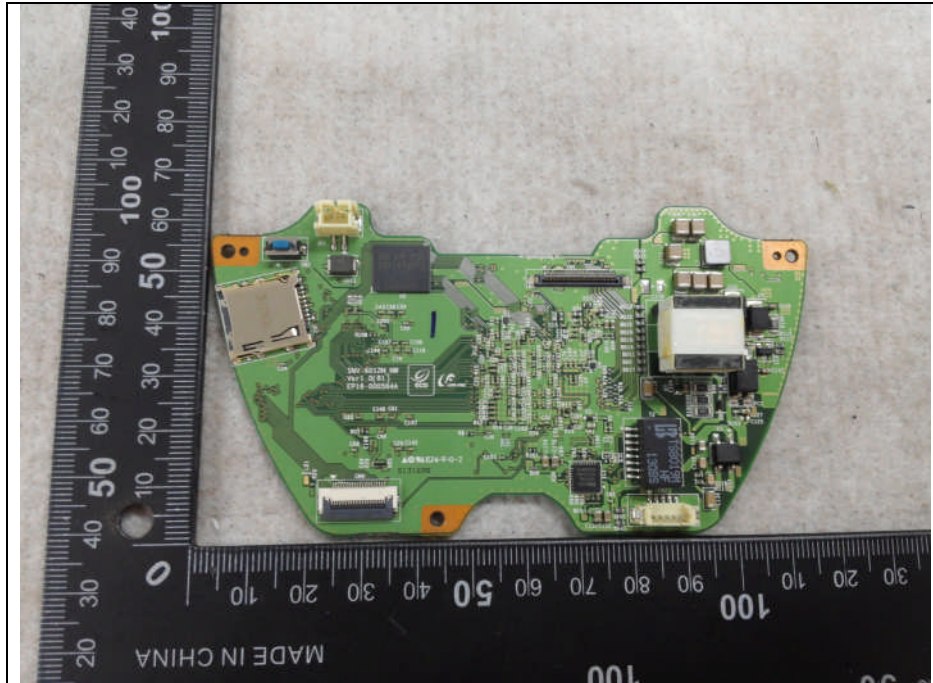
FCC Label Location

This device complies with part 15 of the FCC Rules. Operation is subject to the following two conditions:
(1) This device may not cause harmful interference, and (2) this device must accept any interference received, including interference that may cause undesired operation.

Inside



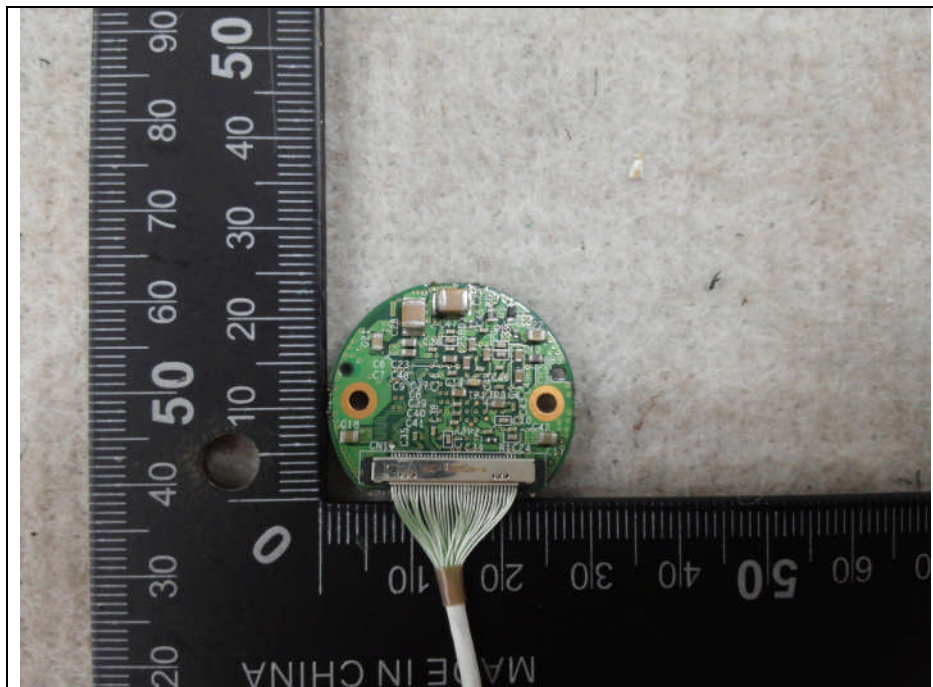
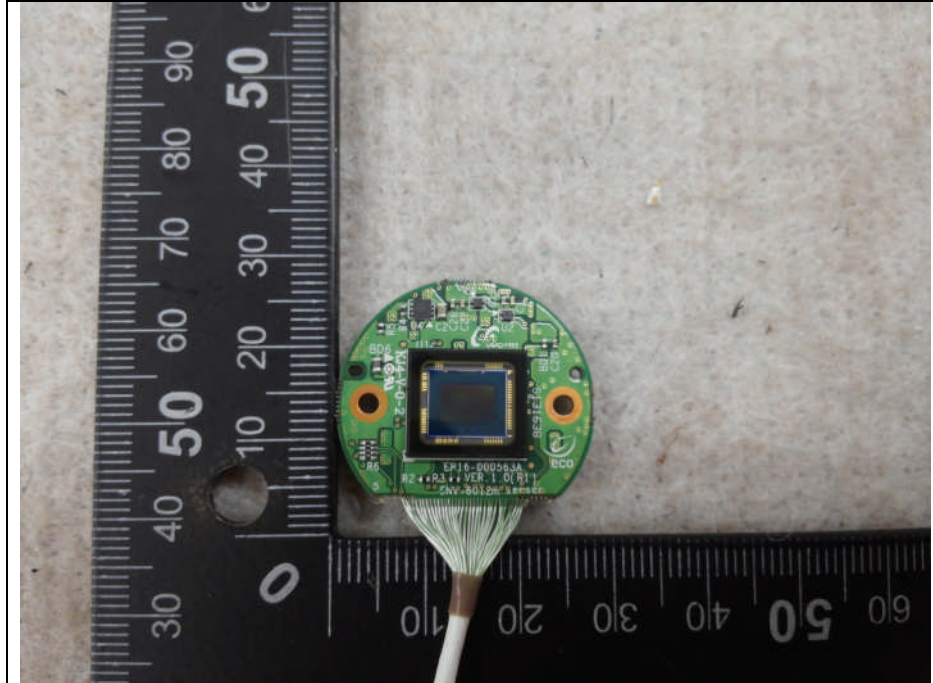
Main Board



Lens



Lens Board



Cable

