



EMC TEST REPORT For VCCI

Test Report No. : KES-EM-21T0599
Date of Issue : Jul. 14, 2021
Product name : NETWORK CAMERA
Model/Type No. : XNO-9083R
Variant Model : -
Applicant : Hanwha Techwin Co., Ltd.
Applicant Address : 6, Pangyo-ro 319Beon-gil, Bundang-gu, Seongnam-si,
Gyeonggi-do, Republic of Korea
Manufacturer : 1. HANWHA TECHWIN SECURITY VIETNAM CO.,LTD.
2. D-TECH CO.,LTD.
Manufacturer Address : 1. Lot O-2, Que Vo Industrial Zone extended area,
Nam Son commune, Bac Ninh city, Bac Ninh province, Vietnam
2. 173-25, Saneop-ro, Gwonseon-gu, Suwon-si, Gyeonggi- do,
Korea (Suwon Industrial Complex)
Date of Receipt : Jun. 15, 2021
Test date : Jul. 01, 2021 ~ Jul. 04, 2021
Test Results : ☒ **In Compliance** ☐ **Not in Compliance**

Tested by

Ki Man, Kim
EMC Test Engineer

Reviewed by

Dong-Hun, Jang
EMC Technical Manager

This test report is not related to KS Q ISO/IEC 17025 and KOLAS.

**KES Co., Ltd.**

3701, 40, Simin-daero 365beon-gil,
Dongan-gu, Anyang-si, Gyeonggi-do, 14057, Korea
Tel: +82-31-425-6200 / Fax: +82-31-424-0450
www.kes.co.kr

Report No.:
KES-EM-21T0599
Page (2) of (43)

REPORT REVISION HISTORY

Date	Test Report No.	Revision History
Jul. 14, 2021	KES-EM-21T0599	Issued

This report shall not be reproduced except in full, without the written approval of KES Co., Ltd. This document may be altered or revised by KES Co., Ltd. personnel only, and shall be noted in the revision section of the document. Any alteration of this document not carried out by KES Co., Ltd. will constitute fraud and shall nullify the document.

This report shall not be reproduced except in full, without the written approval of KES Co., Ltd.
The results shown in this test report refer only to the sample(s) tested unless otherwise stated.
The authenticity of the test report, contact shchoi@kes.co.kr



TABLE OF CONTENTS

1.0	General Product Description.....	4
1.1	Test Voltage & Frequency	9
1.2	Variant Model Differences	9
1.3	Device Modifications	9
1.4	Equipment Under Test.....	9
1.5	Support Equipments	9
1.6	External I/O Cabling	9
1.7	EUT Operating Mode(s)	11
1.8	Configuration.....	12
1.9	Remarks when standards applied	13
1.10	Calibration Details of Equipment Used for Measurement.....	13
1.11	Test Facility	13
1.12	Laboratory Accreditations and Listings	13
2.0	Test Regulations.....	14
2.1	Conducted Emissions Mains Power Ports.....	16
2.2	Conducted Emissions at Telecommunication Ports.....	17
2.3	Radiated Electric Field Emissions(Below 1 GHz)	18
2.4	Radiated Electric Field Emissions(Above 1 GHz)	19
APPENDIX A – TEST DATA.....		20
Conducted Emissions at Mains Power Ports.....		20
Conducted Emissions at Telecommunication Ports		22
Radiated Electric Field Emissions(Below 1 GHz)		24
Radiated Electric Field Emissions(Above 1 GHz).....		26
Test Setup Photos and Configuration		28
Conducted Emissions at Mains Power Ports.....		28
Conducted Emissions at Telecommunication Ports		29
Radiated Electric Field Emissions(Below 1 GHz)		31
Radiated Electric Field Emissions(Above 1 GHz).....		33
EUT External Photographs		35
EUT Internal Photographs		36



1.0 General Product Description

Main Specifications of EUT are:

Video	
Imaging Device	1/1.8" progressive CMOS
Resolution	3840x2160, 3328x1872, 3072x1728, 2592x1944, 2688x1520, 1920x1080, 1600x1200, 1280x1024, 1280x960, 1280x720, 1024x768, 800x600, 800x448, 720x576, 720x480, 640x480, 640x360, 320x240
Max. Framerate	H.265/H.264: Max. 30fps/25fps(60Hz/50Hz) MJPEG: Max. 15fps/12fps(60Hz/50Hz)
NETD	None
Pixel Size	None
Min. Illumination	(TBD) Color: 0.04Lux(F1.3, 1/30sec) BW: 0.004Lux(F1.3, 1/30sec), 0Lux(IR LED on)
Video Out	CVBS: 1.0 Vp-p / 75Ω composite, 720x480(N), 720x576(P) for installation USB: Micro USB Type B, 1280x720 for installation
Video Transmission Distance	None
Lens	
Focal Length (Zoom Ratio)	4.4~9.3mm(2.1x) motorized varifocal
Max. Aperture Ratio	F1.3
Angular Field of View	H : 112.1°(Wide)~47.5°(Tele) V : 58.0°(Wide)~26.6°(Tele) D : 137.5°(Wide)~54.6°(Tele)
Min. Object Distance	0.5m(1.64ft)
Focus Control	Simple focus, Manual
Lens Type	P-iris(IR corrected)
Mount Type	None
Optional Lens	None
Pan / Tilt / Rotate	
Pan / Tilt / Rotate Range	None
Pan Range	None
Pan Speed	None

This report shall not be reproduced except in full, without the written approval of KES Co., Ltd.
The results shown in this test report refer only to the sample(s) tested unless otherwise stated.
The authenticity of the test report, contact shchoi@kes.co.kr

**KES Co., Ltd.**

3701, 40, Simin-daero 365beon-gil,
Dongan-gu, Anyang-si, Gyeonggi-do, 14057, Korea
Tel: +82-31-425-6200 / Fax: +82-31-424-0450
www.kes.co.kr

Report No.:
KES-EM-21T0599
Page (5) of (43)

Tilt Range	None
Tilt Speed	None
Rotate Range	None
Sequence	None
Preset Accuracy	None
Operational	
Camera Title	Displayed up to 85 characters
Direction Indicator	None
Day & Night	Auto(ICR)
Backlight Compensation	BLC, HLC, WDR, SDR
Wide Dynamic Range	extremeWDR (120dB)
Digital Noise Reduction	WiseNR II (Based on AI engine), SSNR V
Digital Image Stabilization	Support (built-in gyro sensor)
Defog	Support
Motion Detection	8ea, 8point Polygonal zones
Privacy Masking	32ea, Quadrangle zones - Color : Gray, Green, Red, Blue, Black, White - Mosaic
Gain Control	Support
White Balance	ATW / Narrow ATW / AWC / Manual / Indoor / Outdoor
LDC	Support (Fill/stretch mode)
Electronic Shutter Speed	Minimum / Maximum / Anti flicker (2~1/12,000sec) Auto prefer shutter control (Based on AI engine)
Digital PTZ	Support
Video Rotation	Flip, Mirror, Hallway view (90°/270°)
Analytics	- Analytics events based on AI engine (NPU) : Object detection (Person/Face/Vehicle(car/truck/bus/bicycle/motorcycle)/License plate), IVA (Virtual line/Area, Enter/Exit, Loitering, direction, intrusion) - Analytics events : Defocus detection, Motion detection, Tampering, Fog detection, Audio detection, Sound classification, Shock detection, Appear/Disappear
Business Intelligence	Based on AI engine (NPU) : People counting, Queue management, Heatmap

This report shall not be reproduced except in full, without the written approval of KES Co., Ltd.
The results shown in this test report refer only to the sample(s) tested unless otherwise stated.
The authenticity of the test report, contact shchoi@kes.co.kr

**KES Co., Ltd.**

3701, 40, Simin-daero 365beon-gil,
Dongan-gu, Anyang-si, Gyeonggi-do, 14057, Korea
Tel: +82-31-425-6200 / Fax: +82-31-424-0450
www.kes.co.kr

Report No.:
KES-EM-21T0599
Page (6) of (43)

Serial Interface	None
Alarm I/O	2 configurable I/O ports, DC 12V output(Max. 50mA)
Alarm Triggers	Analytics, Network disconnect, Alarm input, App event, Time schedule
Alarm Events	When alarm trigger occurred <ul style="list-style-type: none">- File upload(image) : e-mail/FTP- Notification : e-mail- Recording : SD/SDHC/SDXC or NAS recording at event triggers- Alarm output- Handover(PTZ preset, Send message by HTTP/HTTPS/TCP)- Audio clip playback- PTZ preset
Audio In	Selectable(mic in/line in) Supply voltage: 2.5VDC(4mA), Input impedance: 2K Ohm
Audio Out	Line out, Max.output level: 1Vrms
IR Viewable Length	WiseIR 50m(164.04ft)(TBD)
IR Illuminator (Optional)	None
Water Removal	None
Auto Tracking	None
Coaxial Protocol	None
Color Palettes	None
Radiometry	
Temperature Detect Range	None
Temperature Accuracy	None
Temperature Detection	None
Additional	None
Network	
Ethernet	Metal shielded RJ-45(10/100/1000BASE-T)
Video Compression	H.265/H.264: Main/High, MJPEG
Audio Compression	G.711 u-law /G.726 Selectable G.726(ADPCM) 8KHz, G.711 8KHz G.726: 16Kbps, 24Kbps, 32Kbps, 40Kbps AAC-LC: 48Kbps at 16KHz

This report shall not be reproduced except in full, without the written approval of KES Co., Ltd.
The results shown in this test report refer only to the sample(s) tested unless otherwise stated.
The authenticity of the test report, contact shchoi@kes.co.kr

**KES Co., Ltd.**

3701, 40, Simin-daero 365beon-gil,
Dongan-gu, Anyang-si, Gyeonggi-do, 14057, Korea
Tel: +82-31-425-6200 / Fax: +82-31-424-0450
www.kes.co.kr

Report No.:
KES-EM-21T0599
Page (7) of (43)

Smart Codec	Manual(5ea area), WiseStreamⅡ, WiseStreamⅢ(Based on AI engine)
Video Quality Adjustment	H.264/H.265: Target bitrate level control MJPEG: Target bitrate level control
Bitrate Control	H.264/H.265: CBR or VBR MJPEG: VBR
Streaming	Unicast(20 users) / Multicast Multiple streaming(Up to 10 profiles, 3 virtual channel support)
Protocol	IPv4, IPv6, TCP/IP, UDP/IP, RTP(UDP), RTP(TCP), RTCP, RTSP, NTP, HTTP, HTTPS, SSL/TLS, DHCP, FTP, SMTP, ICMP, IGMP, SNMPv1/v2c/v3(MIB-2), ARP, DNS, DDNS, QoS, UPnP, Bonjour, LLDP, SRTP (TCP, UDP Unicast)
Security	TPM 2.0 (FIPS 140-2 level 2) HTTPS(SSL) Login Authentication Digest Login Authentication IP Address Filtering User access log 802.1X Authentication(EAP-TLS, EAP-LEAP, EAP-PEAP MSCHAPv2) Device Certificate(Hanwha Techwin Root CA, pre-installed) Secure by default certificate(TBD) Secure OS/Boot/Storage, Verify firmware forgery
Application Programming Interface	ONVIF Profile S/G/T SUNAPI(HTTP API) Wisenet open platform
General	
Webpage Language	English, Korean, Chinese, French, Italian, Spanish, German, Japanese, Russian, Swedish,, Portuguese, Czech, Polish, Turkish, Dutch, Greek, Hungarian
Web Viewer	None
Edge Storage	Micro SD/SDHC/SDXC 2slot Max. 1TB (512GB * 2)
Memory	4GB RAM, 512MB Flash
Environmental & Electrical	
Operating Temperature /	-50°C ~ +60°C(-58°F ~ +140°F)

This report shall not be reproduced except in full, without the written approval of KES Co., Ltd.
The results shown in this test report refer only to the sample(s) tested unless otherwise stated.
The authenticity of the test report, contact shchoi@kes.co.kr

**KES Co., Ltd.**

3701, 40, Simin-daero 365beon-gil,
Dongan-gu, Anyang-si, Gyeonggi-do, 14057, Korea
Tel: +82-31-425-6200 / Fax: +82-31-424-0450
www.kes.co.kr

Report No.:
KES-EM-21T0599
Page (8) of (43)

Humidity	NEMA TS-2 : 74°C * Start up should be done at above -30°C less than 95%RH(non-condensing) Humidity control /w GORE vent
Storage Temperature / Humidity	-50°C ~ +60°C(-58°F ~ +140°F) / Less than 90% RH
Certification	IP66/IP67, NEMA4X, IK10
Input Voltage	PoE+(IEEE802.3at, Class4), 12VDC
Power Consumption	TBD Power redundancy failover
Mechanical	
Color / Material	White / Aluminum Hard-coated window
RAL Code	RAL7022
Product Dimensions / Weight	Ø91x368.6mm(Ø3.85"x14.51"), 2.2kg(4.85 lb) (TBD)
Compatible Conduit hole / Gangbox	3/4" (M25) single, double, 4" octagon, 4" square
Hanging Mount (Dome)	None
Skin Cover (Dome)	None
Weather Cap (Dome)	None
Power Module	None
Backbox	None
DORI (EN62676-4 standard)	
Detect (25PPM/ 8PPF)	Wide: 51.7m(169.64ft) / Tele: 174.5m(572.64ft)
Observe (63PPM/ 19PPF)	Wide: 20.7m(67.85ft) / Tele: 69.8m(229.06ft)
Recognize (125PPM/ 38PPF)	Wide: 10.3m(33.93ft) / Tele: 34.9m(114.53ft)
Identify (250PPM/ 76PPF)	Wide: 5.2m(16.96ft) / Tele: 17.5m(57.26ft)

This report shall not be reproduced except in full, without the written approval of KES Co., Ltd.
The results shown in this test report refer only to the sample(s) tested unless otherwise stated.
The authenticity of the test report, contact shchoi@kes.co.kr



1.1 Test Voltage & Frequency

Unless indicated otherwise on the individual data sheet or test results, the test voltage and frequency was as indicated below.

☒ AC 100 V, 60 Hz ☒ PoE

1.2 Variant Model Differences

Not applicable

1.3 Device Modifications

Not applicable

1.4 Equipment Under Test

Description	Model Number	Serial Number	Manufacturer	Remarks
NETWORK CAMERA	XNO-9083R	-	HANWHA TECHWIN SECURITY VIETNAM CO.,LTD.	EUT

1.5 Support Equipments

Description	Model Number	Serial Number	Manufacturer	Remarks
Adaptor	2ACB022F	-	Channel Well Technology (Guangzhou) Co., Ltd.	-
PoE Adaptor	PSE156G 4-Pair,Hi- Power	-	-	-
Notebook	P95G001	8KM8HT2	DELL	-
Notebook Adaptor	LA65NS2-01	-	LITE-ON TECHNOLOGY(CHANGZ HOU)CO.,LTD.	-
Alarm1	-	-	-	-
Alarm2	-	-	-	-
Smartphone	LG-SU760	108KPQJ0186212	LG	-
Headset	K550	-	Britz®	-
Micro SD Card1	-	-	Sandisk	8 GB
Micro SD Card2	-	-	Sandisk	8 GB

**KES Co., Ltd.**

3701, 40, Simin-daero 365beon-gil,
Dongan-gu, Anyang-si, Gyeonggi-do, 14057, Korea
Tel: +82-31-425-6200 / Fax: +82-31-424-0450
www.kes.co.kr

Report No.:
KES-EM-21T0599
Page (10) of (43)

1.6 External I/O Cabling

■ DC Mode

Start		END		Cable Spec.	
Description	I/O Port	Description	I/O Port	Length	Shield
NETWORK CAMERA (EUT)	RJ-45 (LAN)	Notebook	RJ-45 (LAN)	3.0	S
	Slot	Micro SD Card1	Slot	-	-
	Slot	Micro SD Card2	Slot	-	-
	3 Pin	Alarm1	3 Pin	3.0	U
	2 Pin	Alarm2	2 Pin	3.0	U
	3.5 mm	Headset	3.5 mm	1.7	U
	3.5 mm			1.7	U
	2 Pin	Adaptor	2 Pin	1.6	U
Notebook	3.5 mm	Smartphone	3.5 mm	0.8	U
	JACK	Notebook Adaptor	JACK	1.7	U

* Unshielded=U, Shielded=S

■ PoE Mode

Start		END		Cable Spec.	
Description	I/O Port	Description	I/O Port	Length	Shield
NETWORK CAMERA (EUT)	RJ-45 (PoE)	PoE Adaptor	RJ-45 (PoE)	3.0	S
	Slot	Micro SD Card1	Slot	-	-
	Slot	Micro SD Card2	Slot	-	-
	3 Pin	Alarm1	3 Pin	3.0	U
	2 Pin	Alarm2	2 Pin	3.0	U
	3.5 mm	Headset	3.5 mm	1.7	U
	3.5 mm			1.7	U
Notebook	RJ-45 (LAN)	PoE Adaptor	RJ-45 (LAN)	3.5	S
	3.5 mm	Smartphone	3.5 mm	0.8	U
	JACK	Notebook Adaptor	JACK	1.7	U

* Unshielded=U, Shielded=S

This report shall not be reproduced except in full, without the written approval of KES Co., Ltd.
The results shown in this test report refer only to the sample(s) tested unless otherwise stated.
The authenticity of the test report, contact shchoi@kes.co.kr

**KES Co., Ltd.**

3701, 40, Simin-daero 365beon-gil,
Dongan-gu, Anyang-si, Gyeonggi-do, 14057, Korea
Tel: +82-31-425-6200 / Fax: +82-31-424-0450
www.kes.co.kr

Report No.:
KES-EM-21T0599
Page (11) of (43)

1.7 EUT Operating Mode(s)

Test Mode	operating
DC Mode	EUT Monitoring, Ping Test
PoE Mode	

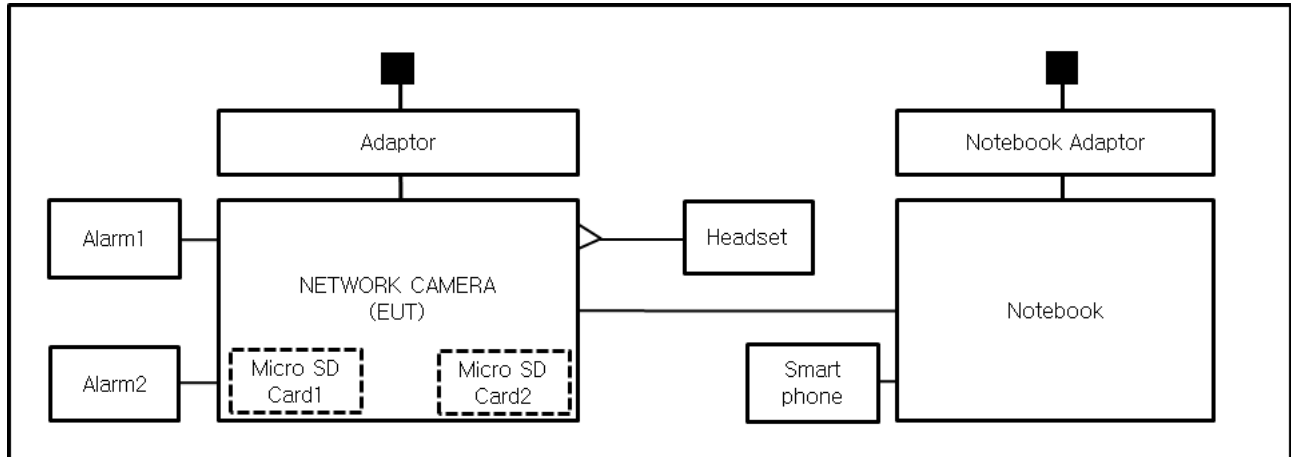
EUT Test operating S/W		
Name	Version	Manufacture Company
Web Viewer	-	Hanwha Techwin Co., Ltd.

This report shall not be reproduced except in full, without the written approval of KES Co., Ltd.
The results shown in this test report refer only to the sample(s) tested unless otherwise stated.
The authenticity of the test report, contact shchoi@kes.co.kr

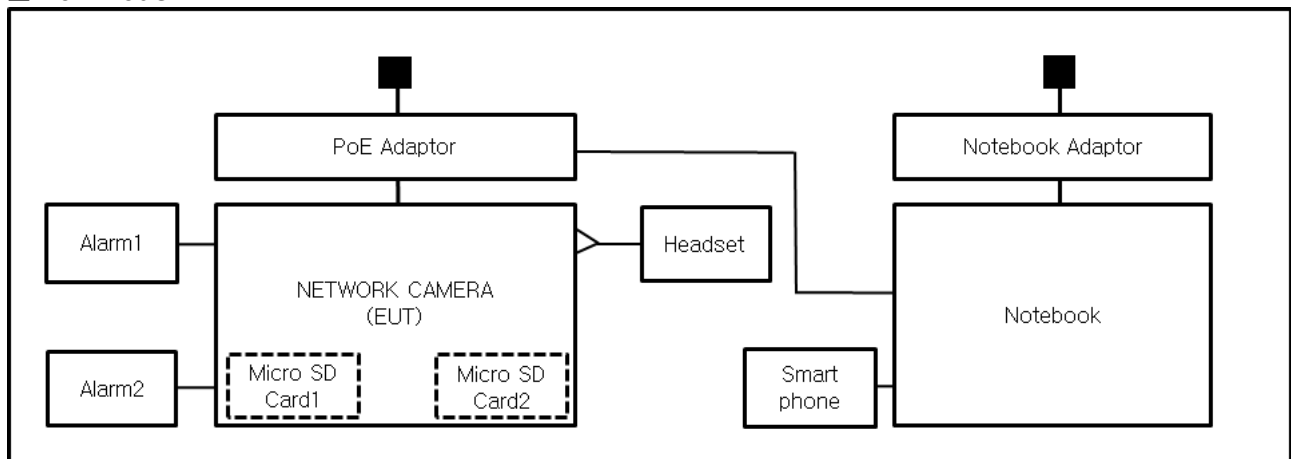
1.8 Configuration

■ AC Main
 □ DC Main

■ DC Mode



■ PoE Mode



1.9 Remarks when standards applied

- USB ports, VIDEO ports are not used and have not been tested.







1.10 Calibration Details of Equipment Used for Measurement

Test equipment and test accessories are calibrated on regular basis. The maximum time between calibrations is one year or what is recommended by the manufacturer, whichever is less.

1.11 Test Facility

The measurement facility is located at 473-21 Gayeo-ro, Yeosu-si, Gyeonggi-do, 12658, Korea. The sites are constructed in conformance with the requirements of ANSI C63.4:2014 and CISPR 16-1-4:2019

1.12 Laboratory Accreditations and Listings

Country	Agency	Scope of Accreditation	Logo
KOREA	RRA	EMI (3 m & 10 m Semi-Anechoic Chamber , 10 m Open Area and conducted test site) EMS (ESD, RS, EFT/Burst, Surge, CS, Magnetic, Dips and interruptions)	 KR0100
International	KOLAS	EMI (3 m & 10 m Semi-Anechoic Chamber , and conducted test site) EMS (ESD, RS, EFT/Burst, Surge, CS, Magnetic, Dips and interruptions)	 KT489
USA	FCC	3 m & 10 m Semi-Anechoic Chamber, 10 m Open Area and Conducted test site to perform FCC Part 15/18 measurements.	 KR0100
Canada	ISED	3 m & 10 m Semi-Anechoic Chamber and Conducted test site	 23298-1
JAPAN	VCCI	Mains Ports Conducted Interference Measurement, Telecommunication Ports Conducted Disturbance Measurement and Radiation 10 meter site, Facility for measuring radiated disturbance above 1 GHz	 R-20056, C-20036, T-20040, G-20057
Europe	TÜV SÜD	EMI (3 m & 10 m Semi-Anechoic Chamber , 10 m Open Area and conducted test site) EMS (ESD, RS, EFT/Burst, Surge, CS, Magnetic, Dips and interruptions)	 CARAT 001633 0004

2.0 Test Regulations

The emissions tests were performed according to following regulations:

☐ **EMC – Directive 2014/30/EU**

☐ EN 61000-6-3:2011

☐ EN 61000-6-1:2007

☐ EN 61000-6-4:2007 +A1:2011

☐ EN 61000-6-2:2005

☐ EN 55011:2007 +A1:2010

☐ Group 1
☐ Class A

☐ Group 2
☐ Class B

☐ EN 55014-1:2006 +A2:2011

☐ EN 55014-2:1997 +A2:2008

☐ EN 55015:2013

☐ EN 61547 :2009

☐ EN 55032:2015

☐ Class A

☐ Class B

☐ EN 55024:2010 +A1:2015

☐ EN 50130-4:2011 +A1:2014

☐ EN 61000-3-2:2014

☐ EN 61000-3-3:2013

☐ EN 61326-1:2013



KES Co., Ltd.

3701, 40, Simin-daero 365beon-gil,
Dongan-gu, Anyang-si, Gyeonggi-do, 14057, Korea
Tel: +82-31-425-6200 / Fax: +82-31-424-0450
www.kes.co.kr

Report No.:
KES-EM-21T0599
Page (15) of (43)

-
- | | | |
|---|---|----------------------------------|
| <input checked="" type="checkbox"/> VCCI-CISPR 32:2016 | <input checked="" type="checkbox"/> Class A | <input type="checkbox"/> Class B |
| <input type="checkbox"/> AS/NZS CISPR32:2015 | <input type="checkbox"/> Class A | <input type="checkbox"/> Class B |
| <input type="checkbox"/> 47 CFR Part 15, Subpart B | | |
| <input type="checkbox"/> CISPR 22:2009 +A1:2010 | <input type="checkbox"/> Class A | <input type="checkbox"/> Class B |
| <input type="checkbox"/> ANSI C63.4-2009 | | |
| <input type="checkbox"/> IC Regulation ICES-003 : 2016 | | |
| <input type="checkbox"/> CAN/CSA CISPR 22-10 | <input type="checkbox"/> Class A | <input type="checkbox"/> Class B |
| <input type="checkbox"/> ANSI C63.4-2014 | | |
| <input type="checkbox"/> RE- Directive 2014/53/EU | | |
| <input type="checkbox"/> EN 301 489-1 V1.9.2 | | |
| <input type="checkbox"/> Equipment for fixed use | | |
| <input type="checkbox"/> Equipment for vehicular use | | |
| <input type="checkbox"/> Equipment for portable use | | |
| <input type="checkbox"/> EN 301 489-3 V1.6.1 | | |
| <input type="checkbox"/> EN 301 489-17 V2.2.1 | | |
| <input type="checkbox"/> EN 60945:2002 | | |

This report shall not be reproduced except in full, without the written approval of KES Co., Ltd.
The results shown in this test report refer only to the sample(s) tested unless otherwise stated.
The authenticity of the test report, contact shchoi@kes.co.kr



2.1 Conducted Emissions Mains Power Ports

Test Date

Jul. 01, 2021

Test Location

Electro wave Shieldroom #6

Test Equipment

Used	Description	Model Number	Manufacturer	Serial Number	Cal. Due
<input checked="" type="checkbox"/>	EMI Test S/W	EMC32	R & S	9.12.00	-
<input checked="" type="checkbox"/>	EMI TEST RECEIVER	ESR3	R & S	101783	01, 15, 2022
<input checked="" type="checkbox"/>	LISN	ENV216	R & S	101787	12, 29, 2021
<input checked="" type="checkbox"/>	LISN	ESH2-Z5	R & S	100450	12, 29, 2021
<input checked="" type="checkbox"/>	PULSE LIMITER	ESH3-Z2	R & S	101915	12, 29, 2021

Test Conditions

Temperature: (24,6 ± 0,2) °C

Relative Humidity: (46,7 ± 0,4) % R.H.

Frequency Range of Measurement

150 kHz to 30 MHz

Instrument Settings

IF Band Width: 9 kHz

Test Results

The requirements are:

- ☒ PASS
☐ NOT PASS
☐ NOT APPLICABLE

Remarks

See Appendix A for test data.



2.2 Conducted Emissions at Telecommunication Ports

Test Date

Jul. 01, 2021

Test Location

Electro wave Shieldroom #6

Test Equipment

Used	Description	Model Number	Manufacturer	Serial Number	Cal. Due
<input checked="" type="checkbox"/>	EMI Test S/W	EMC32	R & S	9.12.00	-
<input checked="" type="checkbox"/>	EMI TEST RECEIVER	ESR3	R & S	101783	01, 15, 2022
<input checked="" type="checkbox"/>	LISN	ENV216	R & S	101787	12, 29, 2021
<input checked="" type="checkbox"/>	LISN	ESH2-Z5	R & S	100450	12, 29, 2021
<input checked="" type="checkbox"/>	PULSE LIMITER	ESH3-Z2	R & S	101915	12, 29, 2021
<input type="checkbox"/>	8-WIRE ISN CAT3,5	ENY81	R & S	100174	12, 30, 2021
<input type="checkbox"/>	8-WIRE ISN CAT6	ENY81-CAT6	R & S	101665	12, 30, 2021
<input checked="" type="checkbox"/>	ISN	ISN S8	SCHWARZBECK	ISN-S8-0019	12, 29, 2021
<input type="checkbox"/>	CDN	CDNS502A	TESEQ	40431	

Test Conditions

Temperature: (24,6 ± 0,2) °C

Relative Humidity: (46,7 ± 0,3) % R.H.

Frequency Range of Measurement

150 kHz to 30 MHz

Instrument Settings

IF Band Width: 9 kHz

Test Results

The requirements are:

- ☒ PASS
☐ NOT PASS
☐ NOT APPLICABLE

Remarks

- See Appendix A for test data.
- For Ethernet interfaces, measurements are required at the highest data rate supported by the interface.



2.3 Radiated Electric Field Emissions(Below 1 GHz)

Test Date

Jul. 01, 2021

Test Location

☐ OPEN AREA TEST SITE #2 ☒ SEMI ANECHOIC CHAMBER #4(10m)

Test Equipment

Used	Description	Model Number	Manufacturer	Serial Number	Cal. Due
<input checked="" type="checkbox"/>	EMI Test S/W	EP5/RE	TOYO Corporation	6.0.0	-
<input checked="" type="checkbox"/>	EMI TEST RECEIVER	ESU26	R & S	100551	04, 01, 2022
<input checked="" type="checkbox"/>	AMPLIFIER	SCU 01	R & S	100603	11, 25, 2021
<input checked="" type="checkbox"/>	TRILOG-BROADBAND ANTENNA	VULB9163	Schwarzbeck	715	12, 08, 2022
<input checked="" type="checkbox"/>	ATTENUATOR	8491A	HP	32173	03, 10, 2022

Test Conditions

Temperature: (24,4 ± 0,3) °C
Relative Humidity: (46,5 ± 0,4) % R.H.

Frequency Range of Measurement

30 MHz to 1 GHz

Instrument Settings

IF Band Width: 120 kHz

Test Results

The requirements are:

☒ PASS
☐ NOT PASS
☐ NOT APPLICABLE

Remarks

See Appendix A for test data.



2.4 Radiated Electric Field Emissions(Above 1 GHz)

Test Date

Jul. 04, 2021

Test Location

SEMI ANECHOIC CHAMBER #3

Test Equipment

Used	Description	Model Number	Manufacturer	Serial Number	Cal. Due
<input checked="" type="checkbox"/>	EMI Test S/W	EP5/RE	TOYO Corporation	6.0.0	-
<input checked="" type="checkbox"/>	EMI TEST RECEIVER	ESR7	R & S	101190	08, 05, 2021
<input checked="" type="checkbox"/>	PREAMPLIFIER	8449B	AGILENT	3008A01967	04, 07, 2022
<input type="checkbox"/>	ATTENUATOR	8491A	HP	35496	03, 10, 2022
<input checked="" type="checkbox"/>	DOUBLE RIDGED HORN ANTENNA	SAS-571	A.H.SYSTEM,INC	781	03, 11, 2022

Test Conditions

Temperature: (24,9 ± 0,2) °C

Relative Humidity: (47,1 ± 0,3) % R.H.

Frequency Range of Measurement

1 GHz to 6 GHz

Instrument Settings

IF Band Width: 1 MHz

Test Results

The requirements are:

- ☒ PASS
☐ NOT PASS
☐ NOT APPLICABLE

Remarks

See Appendix A for test data.

APPENDIX A – TEST DATA

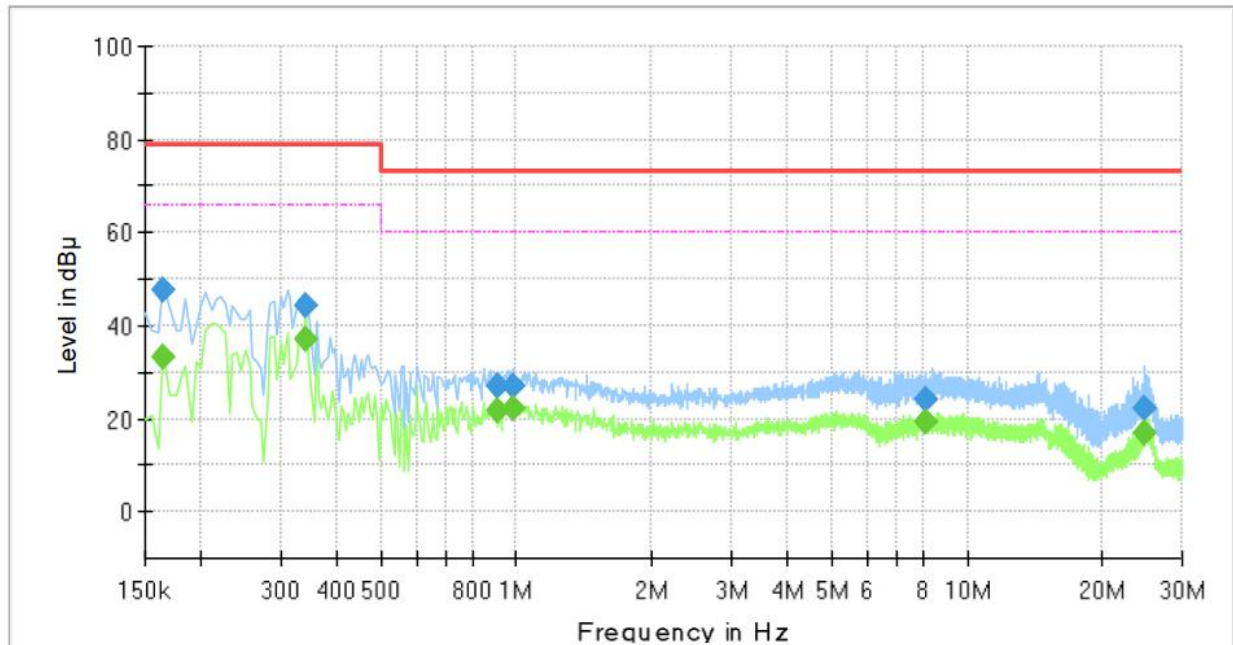
Conducted Emissions at Mains Power Ports

■ DC Mode

HOT LINE

Common Information

Test Description:	Conducted Emission
Model No.:	XNO-9083R
Phase:	L1
Mode:	DC
Operator Name:	KES



Final Result

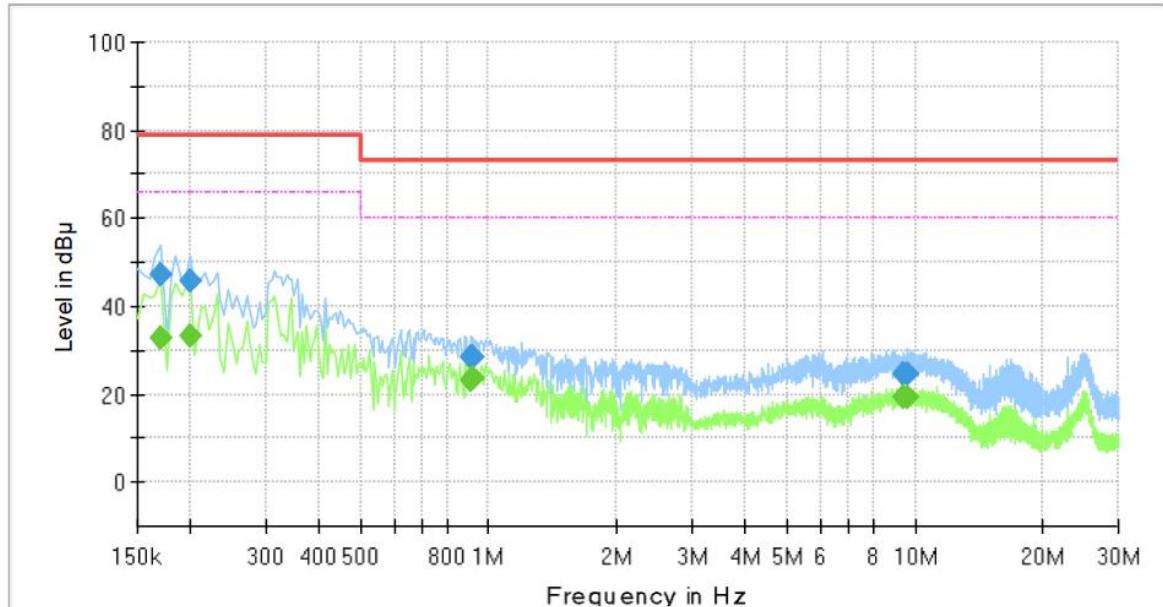
Frequency (MHz)	QuasiPeak (dBμV)	CAverage (dBμV)	Limit (dBμV)	Margin (dB)	Meas. Time (ms)	Bandwidth (kHz)	Line	Corr. (dB)
0.165000	---	33.17	66.00	32.83	1000.0	9.000	L1	19.4
0.165000	47.43	---	79.00	31.57	1000.0	9.000	L1	19.4
0.340000	---	37.28	66.00	28.72	1000.0	9.000	L1	19.5
0.340000	44.45	---	79.00	34.55	1000.0	9.000	L1	19.5
0.905000	---	21.50	60.00	38.50	1000.0	9.000	L1	20.1
0.905000	26.79	---	73.00	46.21	1000.0	9.000	L1	20.1
0.985000	---	21.98	60.00	38.02	1000.0	9.000	L1	20.0
0.985000	26.91	---	73.00	46.09	1000.0	9.000	L1	20.0
8.055000	---	19.07	60.00	40.93	1000.0	9.000	L1	19.6
8.055000	24.22	---	73.00	48.78	1000.0	9.000	L1	19.6
24.660000	---	16.92	60.00	43.08	1000.0	9.000	L1	20.2
24.660000	22.28	---	73.00	50.72	1000.0	9.000	L1	20.2

This report shall not be reproduced except in full, without the written approval of KES Co., Ltd.
 The results shown in this test report refer only to the sample(s) tested unless otherwise stated.
 The authenticity of the test report, contact shchoi@kes.co.kr

NEUTRAL LINE

Common Information

Test Description:	Conducted Emission
Model No.:	XNO-9083R
Phase:	N
Mode:	DC
Operator Name:	KES



Final Result

Frequency (MHz)	QuasiPeak (dBμV)	CAverage (dBμV)	Limit (dBμV)	Margin (dB)	Meas. Time (ms)	Bandwidth (kHz)	Line	Corr. (dB)
0.170000	---	32.85	66.00	33.15	1000.0	9.000	N	19.4
0.170000	47.20	---	79.00	31.80	1000.0	9.000	N	19.4
0.200000	---	33.03	66.00	32.97	1000.0	9.000	N	19.4
0.200000	45.64	---	79.00	33.36	1000.0	9.000	N	19.4
0.910000	---	23.05	60.00	36.95	1000.0	9.000	N	20.1
0.910000	28.25	---	73.00	44.75	1000.0	9.000	N	20.1
0.915000	---	23.45	60.00	36.55	1000.0	9.000	N	20.1
0.915000	28.47	---	73.00	44.53	1000.0	9.000	N	20.1
9.370000	---	19.38	60.00	40.62	1000.0	9.000	N	19.8
9.370000	24.53	---	73.00	48.47	1000.0	9.000	N	19.8
9.640000	---	19.42	60.00	40.58	1000.0	9.000	N	19.8
9.640000	24.41	---	73.00	48.59	1000.0	9.000	N	19.8

◆ Calculation

QuasiPeak[dBuV] / CAverage [dBuV] = Reading Value[dBuV] + Corr. [dB]

QuasiPeak / CAverage : The Final Value

Reading Value : Not shown in the table.

Corr. : Correction values (LISN FACTOR + (Cable Loss + Pulse Limiter FACTOR))



KES Co., Ltd.

3701, 40, Simin-daero 365beon-gil,
Dongan-gu, Anyang-si, Gyeonggi-do, 14057, Korea
Tel: +82-31-425-6200 / Fax: +82-31-424-0450
www.kes.co.kr

Report No.:
KES-EM-21T0599
Page (22) of (43)

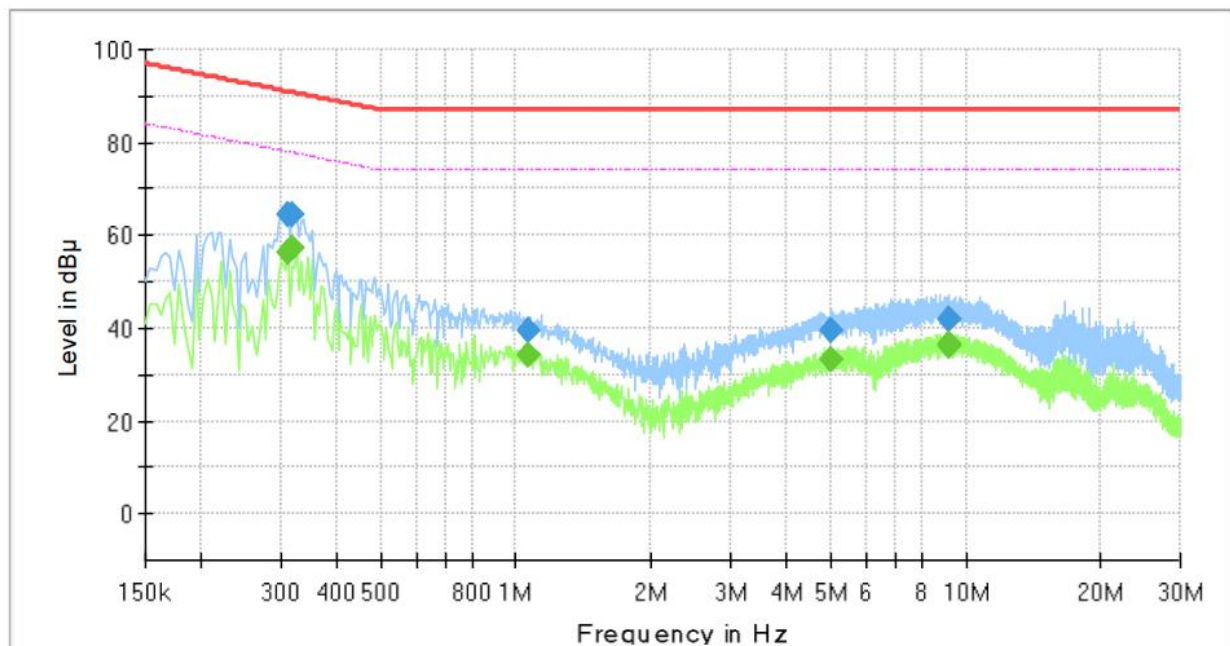
Conducted Emissions at Telecommunication Ports

■ DC Mode

[1 000 Mbps]

Common Information

Test Description:	Telecommunication Emission
Model No.:	XNO-9083R
Mode :	DC
Speed :	1 000 Mbps
Operator Name:	KES



Final Result

Frequency (MHz)	QuasiPeak (dBμV)	CAverage (dBμV)	Limit (dBμV)	Margin (dB)	Meas. Time (ms)	Bandwidth (kHz)	Line	Corr. (dB)
0.310000	---	56.48	77.97	21.49	1000.0	9.000	Single Line	19.5
0.310000	64.54	---	90.97	26.43	1000.0	9.000	Single Line	19.5
0.318000	---	57.07	77.76	20.69	1000.0	9.000	Single Line	19.5
0.318000	64.61	---	90.76	26.15	1000.0	9.000	Single Line	19.5
1.070000	---	34.18	74.00	39.82	1000.0	9.000	Single Line	20.0
1.070000	39.50	---	87.00	47.50	1000.0	9.000	Single Line	20.0
5.042000	---	33.45	74.00	40.55	1000.0	9.000	Single Line	19.5
5.042000	39.47	---	87.00	47.53	1000.0	9.000	Single Line	19.5
9.138000	---	36.33	74.00	37.67	1000.0	9.000	Single Line	19.6
9.138000	41.91	---	87.00	45.09	1000.0	9.000	Single Line	19.6
9.170000	---	36.37	74.00	37.63	1000.0	9.000	Single Line	19.6
9.170000	41.99	---	87.00	45.01	1000.0	9.000	Single Line	19.6

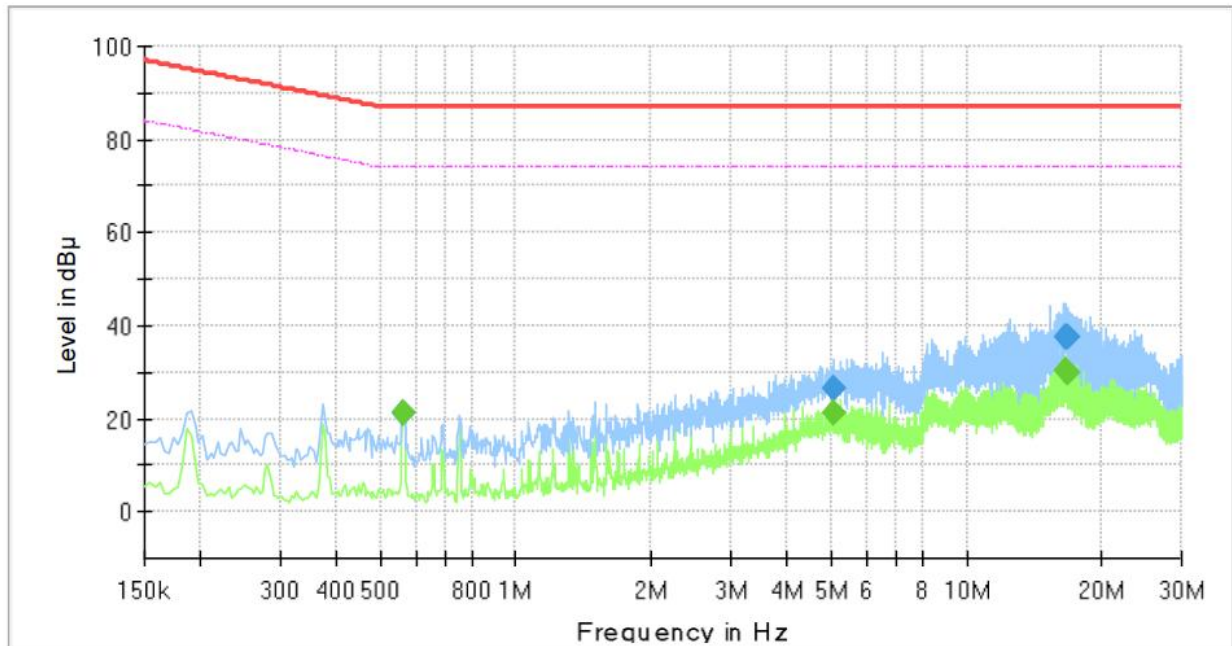
This report shall not be reproduced except in full, without the written approval of KES Co., Ltd.
The results shown in this test report refer only to the sample(s) tested unless otherwise stated.
The authenticity of the test report, contact shchoi@kes.co.kr

■ PoE Mode

[1 000 Mbps]

Common Information

Test Description:	Telecommunication Emission
Model No.:	XNO-9083R
Mode :	PoE
Speed :	1 000 Mbps
Operator Name:	KES



Final Result

Frequency (MHz)	QuasiPeak (dBμV)	CAverage (dBμV)	Limit (dBμV)	Margin (dB)	Meas. Time (ms)	Bandwidth (kHz)	Line	Corr. (dB)
0.562000	---	21.15	74.00	52.85	1000.0	9.000	Single Line	19.7
0.562000	21.45	---	87.00	65.55	1000.0	9.000	Single Line	19.7
5.066000	---	21.14	74.00	52.86	1000.0	9.000	Single Line	19.5
5.066000	26.61	---	87.00	60.39	1000.0	9.000	Single Line	19.5
16.562000	---	30.20	74.00	43.80	1000.0	9.000	Single Line	19.9
16.562000	37.67	---	87.00	49.33	1000.0	9.000	Single Line	19.9
16.862000	---	29.87	74.00	44.13	1000.0	9.000	Single Line	19.9
16.862000	37.62	---	87.00	49.38	1000.0	9.000	Single Line	19.9

◆ Calculation

QuasiPeak[dBuV] / CAverage [dBuV] = Reading Value[dBuV] + Corr. [dB]

QuasiPeak / CAverage : The Final Value

Reading Value : Not shown in the table.

Corr. : Correction values (ISN FACTOR + (Cable Loss + Pulse Limiter FACTOR))



KES Co., Ltd.

3701, 40, Simin-daero 365beon-gil,
Dongan-gu, Anyang-si, Gyeonggi-do, 14057, Korea
Tel: +82-31-425-6200 / Fax: +82-31-424-0450
www.kes.co.kr

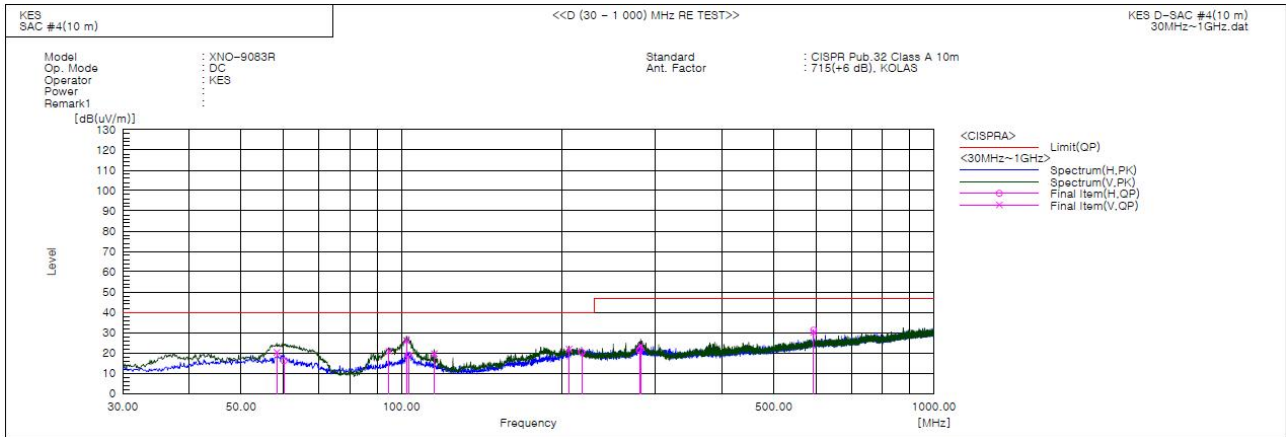
Report No.:

KES-EM-21T0599

Page (24) of (43)

Radiated Electric Field Emissions(Below 1 GHz)

■ DC Mode



Final Result

No.	Frequency [MHz]	(P)	Reading QP [dB(uV)]	c.f [dB(1/m)]	Result QP [dB(uV/m)]	Limit QP [dB(uV/m)]	Margin QP [dB]	Height [cm]	Angle [deg]	Remark
1	58.373	V	42.0	-21.7	20.3	40.0	19.7	367.0	156.0	
2	60.191	H	38.1	-22.0	16.1	40.0	23.9	112.0	270.0	
3	94.869	V	44.4	-23.5	20.9	40.0	19.1	117.0	284.0	
4	102.265	V	48.6	-22.5	26.1	40.0	13.9	100.0	322.0	
5	103.235	H	41.4	-22.5	18.9	40.0	21.1	337.0	180.0	
6	115.239	V	42.7	-23.0	19.7	40.0	20.3	256.0	142.0	
7	206.540	V	42.5	-20.6	21.9	40.0	18.1	100.0	322.0	
8	218.180	H	40.6	-20.2	20.4	40.0	19.6	258.0	315.0	
9	280.018	H	39.8	-18.5	21.3	47.0	25.7	400.0	262.0	
10	281.473	V	41.9	-18.5	23.4	47.0	23.6	215.0	97.0	
11	594.055	V	38.8	-8.6	30.2	47.0	16.8	141.0	52.0	
12	594.155	H	39.9	-8.6	31.3	47.0	15.7	400.0	292.0	

This report shall not be reproduced except in full, without the written approval of KES Co., Ltd.
The results shown in this test report refer only to the sample(s) tested unless otherwise stated.
The authenticity of the test report, contact shchoi@kes.co.kr

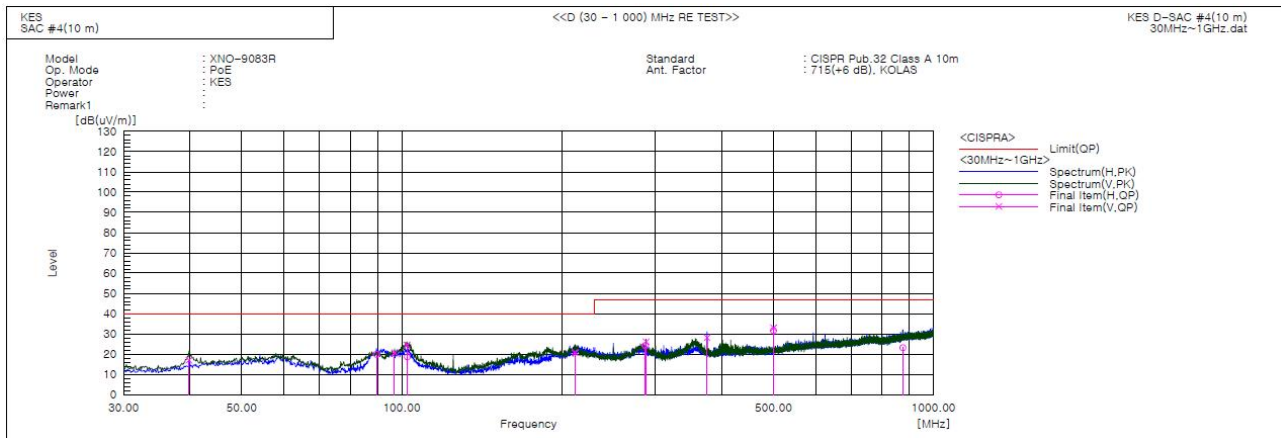


KES Co., Ltd.

3701, 40, Simin-daero 365beon-gil,
Dongan-gu, Anyang-si, Gyeonggi-do, 14057, Korea
Tel: +82-31-425-6200 / Fax: +82-31-424-0450
www.kes.co.kr

Report No.:
KES-EM-21T0599
Page (25) of (43)

PoE Mode



Final Result

No.	Frequency [MHz]	(P)	Reading QP [dB(uV)]	c.f [dB(1/m)]	Result QP [dB(uV/m)]	Limit QP [dB(uV/m)]	Margin QP [dB]	Height [cm]	Angle [deg]	Remark
1	39.821	V	39.7	-22.7	17.0	40.0	23.0	162.0	14.0	
2	89.655	H	44.2	-24.3	19.9	40.0	20.1	389.0	18.0	
3	96.930	V	43.8	-23.1	20.7	40.0	19.3	261.0	292.0	
4	102.265	V	47.0	-22.5	24.5	40.0	15.5	400.0	330.0	
5	102.508	H	41.2	-22.5	18.7	40.0	21.3	262.0	181.0	
6	211.633	V	41.2	-20.5	20.7	40.0	19.3	211.0	347.0	
7	287.120	H	42.6	-18.3	24.3	47.0	22.7	100.0	241.0	
8	288.020	V	44.4	-18.3	26.1	47.0	20.9	102.0	7.0	
9	374.956	V	42.9	-14.8	28.1	47.0	18.9	100.0	347.0	
10	499.965	V	44.6	-11.6	33.0	47.0	14.0	100.0	45.0	
11	499.972	H	43.2	-11.6	31.6	47.0	15.4	111.0	226.0	
12	875.113	H	27.5	-4.3	23.2	47.0	23.8	361.0	0.0	

◆ Calculation

Corrected Amplitude [dBuV] = Amplitude[dBuV] + Correction Factor [dB]

Corrected Amplitude : The Final Value, Amplitude : Reading Value,

Correction Factor : ANT FACTOR + Cable loss

This report shall not be reproduced except in full, without the written approval of KES Co., Ltd.
The results shown in this test report refer only to the sample(s) tested unless otherwise stated.
The authenticity of the test report, contact shchoi@kes.co.kr



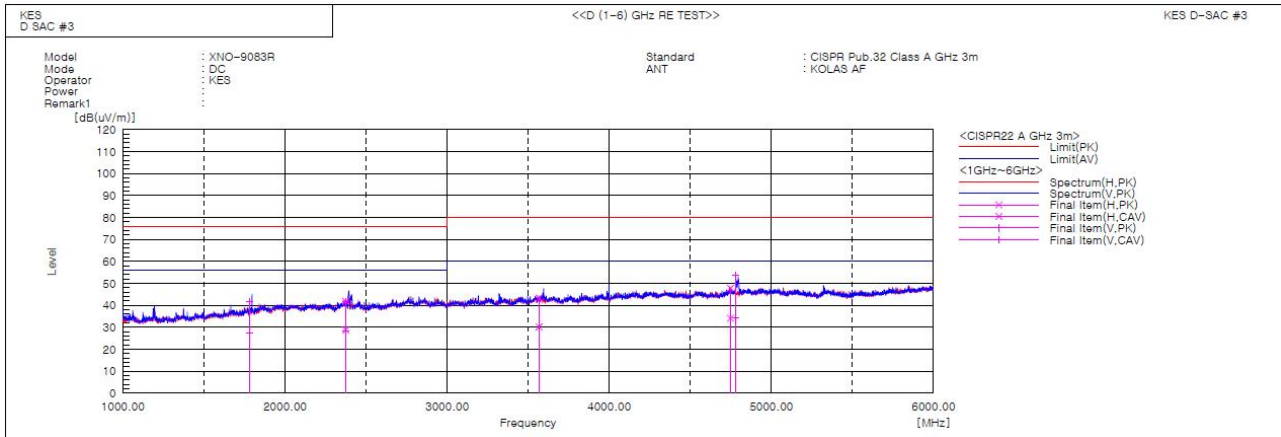
KES Co., Ltd.

3701, 40, Simin-daero 365beon-gil,
Dongan-gu, Anyang-si, Gyeonggi-do, 14057, Korea
Tel: +82-31-425-6200 / Fax: +82-31-424-0450
www.kes.co.kr

Report No.:
KES-EM-21T0599
Page (26) of (43)

Radiated Electric Field Emissions(Above 1 GHz)

■ DC Mode



Final Result

No.	Frequency [MHz]	(P)	Reading PK [dB(uV)]	Reading CAV [dB(uV)]	c.f [dB(1/m)]	Result PK [dB(uV/m)]	Result CAV [dB(uV/m)]	Limit PK [dB(uV/m)]	Limit AV [dB(uV/m)]	Margin PK [dB]	Margin CAV [dB]	Height [cm]	Angle [deg]	Remark
1	1783.083	V	44.7	30.4	-3.1	41.6	27.3	76.0	56.0	34.4	28.7	100.0	175.6	
2	2375.144	H	41.6	28.6	0.2	41.8	28.8	76.0	56.0	34.2	27.2	100.0	327.5	
3	2376.184	V	41.6	28.4	0.2	41.8	28.6	76.0	56.0	34.2	27.4	100.0	213.7	
4	3567.408	H	39.2	26.1	4.1	43.3	30.2	80.0	60.0	36.7	29.8	100.0	347.1	
5	4747.839	H	39.6	25.9	8.2	47.8	34.1	80.0	60.0	32.2	25.9	100.0	32.5	
6	4779.753	V	45.5	26.1	8.4	53.9	34.5	80.0	60.0	26.1	25.5	100.0	23.5	

This report shall not be reproduced except in full, without the written approval of KES Co., Ltd.
The results shown in this test report refer only to the sample(s) tested unless otherwise stated.
The authenticity of the test report, contact shchoi@kes.co.kr

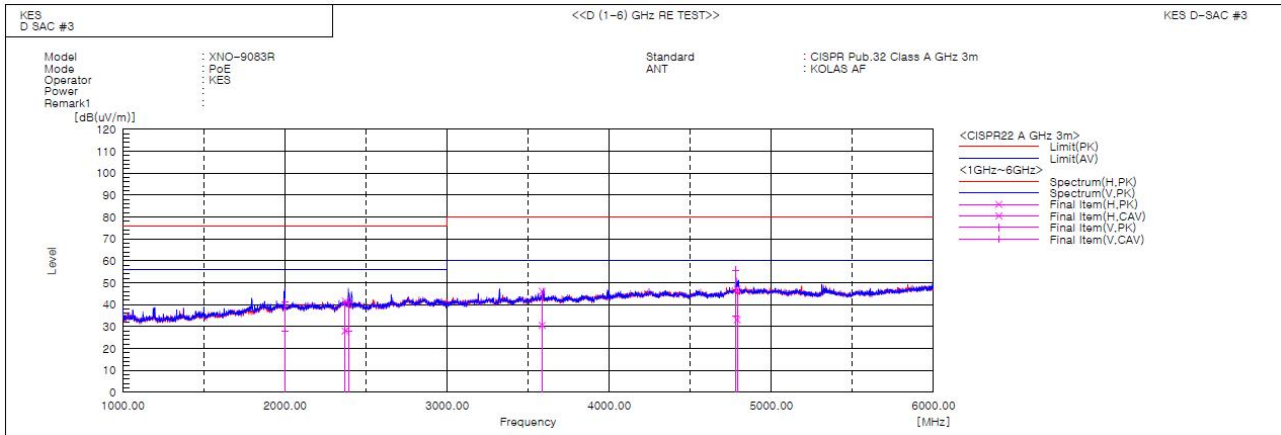


KES Co., Ltd.

3701, 40, Simin-daero 365beon-gil,
Dongan-gu, Anyang-si, Gyeonggi-do, 14057, Korea
Tel: +82-31-425-6200 / Fax: +82-31-424-0450
www.kes.co.kr

Report No.:
KES-EM-21T0599
Page (27) of (43)

■ PoE Mode



Final Result

No.	Frequency [MHz]	(P)	Reading PK [dB(uV)]	Reading CAV [dB(uV)]	c.f [dB(1/m)]	Result PK [dB(uV/m)]	Result CAV [dB(uV/m)]	Limit PK [dB(uV/m)]	Limit AV [dB(uV/m)]	Margin PK [dB]	Margin CAV [dB]	Height [cm]	Angle [deg]	Remark
1	1999.000	V	42.1	28.6	-0.8	41.3	27.8	76.0	56.0	34.7	28.2	100.0	203.3	
2	2371.624	H	41.5	27.8	0.2	41.7	28.0	76.0	56.0	34.3	28.0	100.0	170.8	
3	2391.000	V	41.3	27.9	0.2	41.5	28.1	76.0	56.0	34.5	27.9	100.0	320.5	
4	3586.712	H	41.9	26.4	4.2	46.1	30.6	80.0	60.0	33.9	29.4	100.0	121.4	
5	4780.691	V	47.4	26.3	8.4	55.8	34.7	80.0	60.0	24.2	25.3	100.0	23.9	
6	4789.649	H	38.6	24.6	8.5	47.1	33.1	80.0	60.0	32.9	26.9	100.0	25.8	

◆ Calculation

Result(PK/CAV) [dB(μ V/m)] = (Reading(PK/CAV)[dB(μ V)] + c.f[dB(1/m)])

Margin(PK/CAV)[dB] = Limit[dB(μ V/m)] - Result(PK/CAV) [dB(μ V/m)]

Reading(PK/CAV) : Reading value, Result(PK/CAV) : Reading value + Factor value

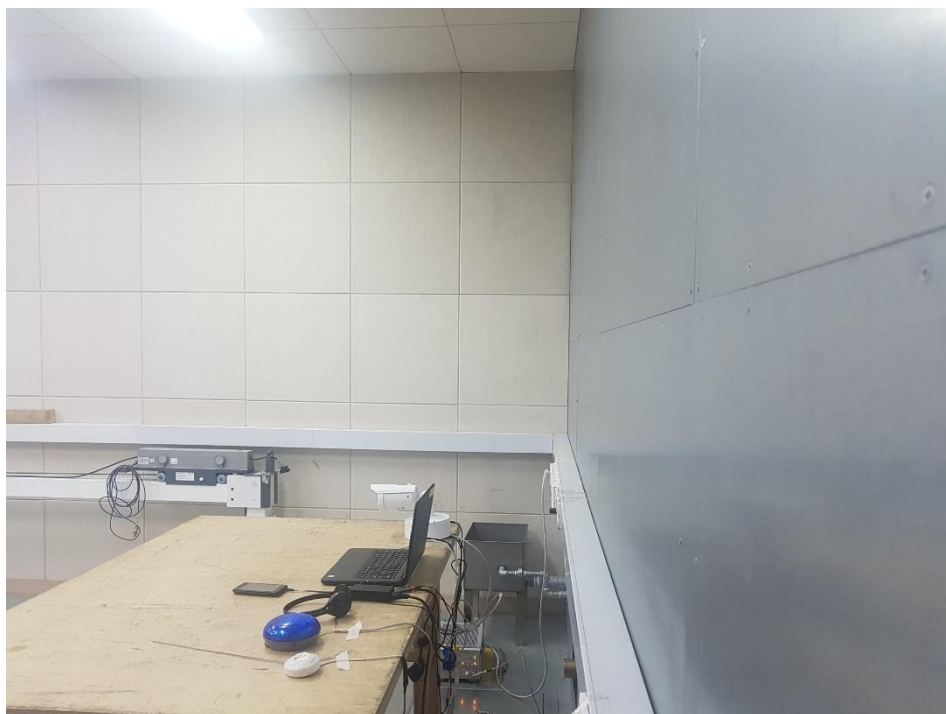
Limit(QP) : Limit value, c.f : (ANT Factor + Cable Loss - Preamp Factor), Margin: Margin value

This report shall not be reproduced except in full, without the written approval of KES Co., Ltd.
The results shown in this test report refer only to the sample(s) tested unless otherwise stated.
The authenticity of the test report, contact shchoi@kes.co.kr

Test Setup Photos and Configuration

Conducted Emissions at Mains Power Ports

■ DC Mode



This report shall not be reproduced except in full, without the written approval of KES Co., Ltd.
The results shown in this test report refer only to the sample(s) tested unless otherwise stated.
The authenticity of the test report, contact shchoi@kes.co.kr

Conducted Emissions at Telecommunication Ports

■ DC Mode



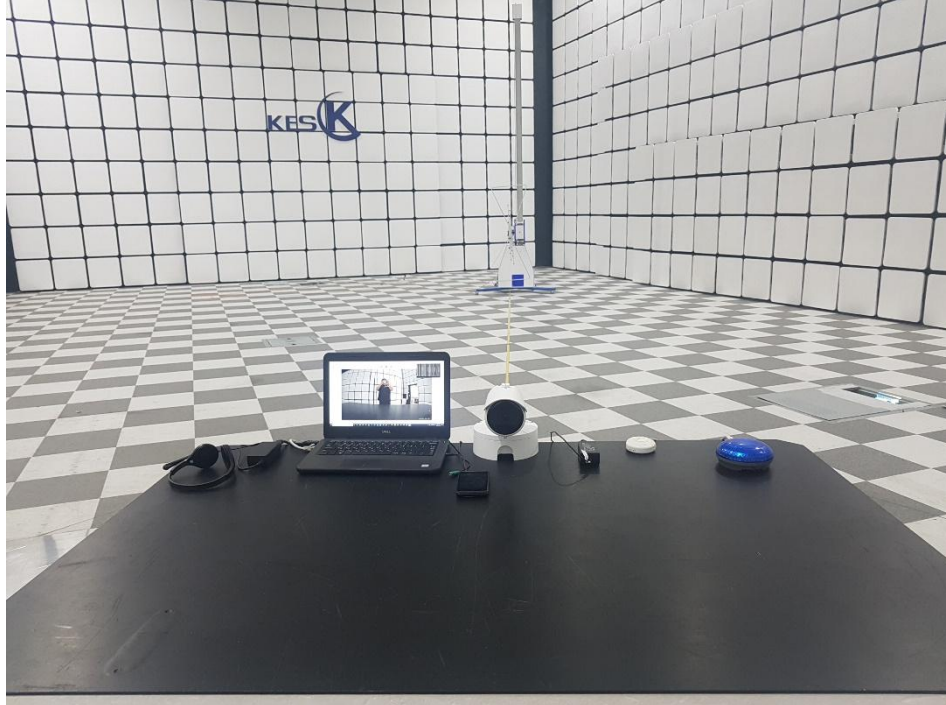
This report shall not be reproduced except in full, without the written approval of KES Co., Ltd.
The results shown in this test report refer only to the sample(s) tested unless otherwise stated.
The authenticity of the test report, contact shchoi@kes.co.kr

■ PoE Mode

This report shall not be reproduced except in full, without the written approval of KES Co., Ltd.
The results shown in this test report refer only to the sample(s) tested unless otherwise stated.
The authenticity of the test report, contact shchoi@kes.co.kr

Radiated Electric Field Emissions(Below 1 GHz)

■ DC Mode



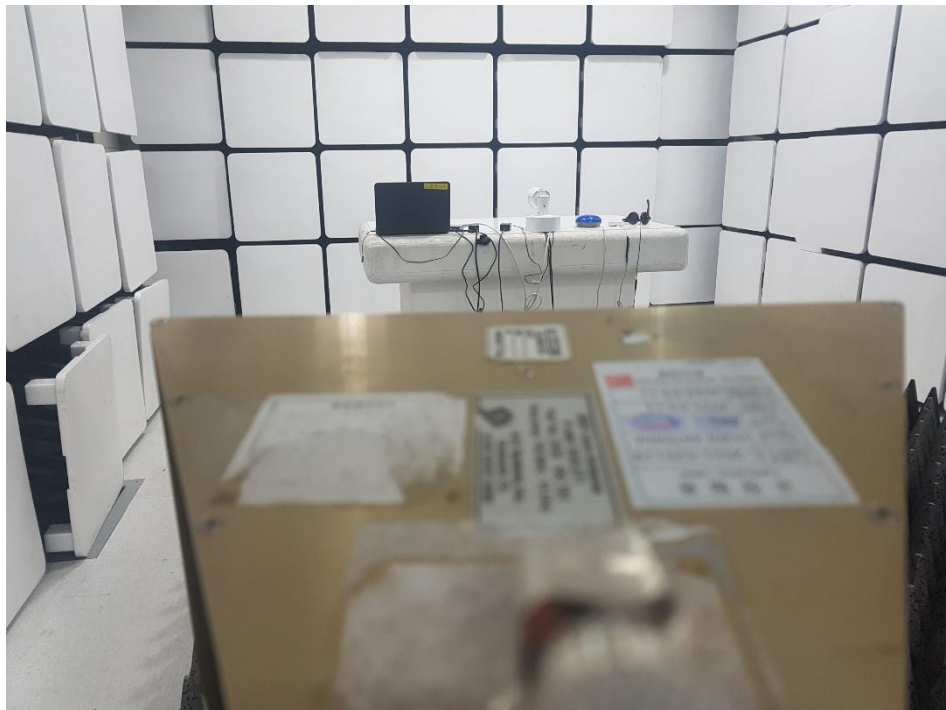
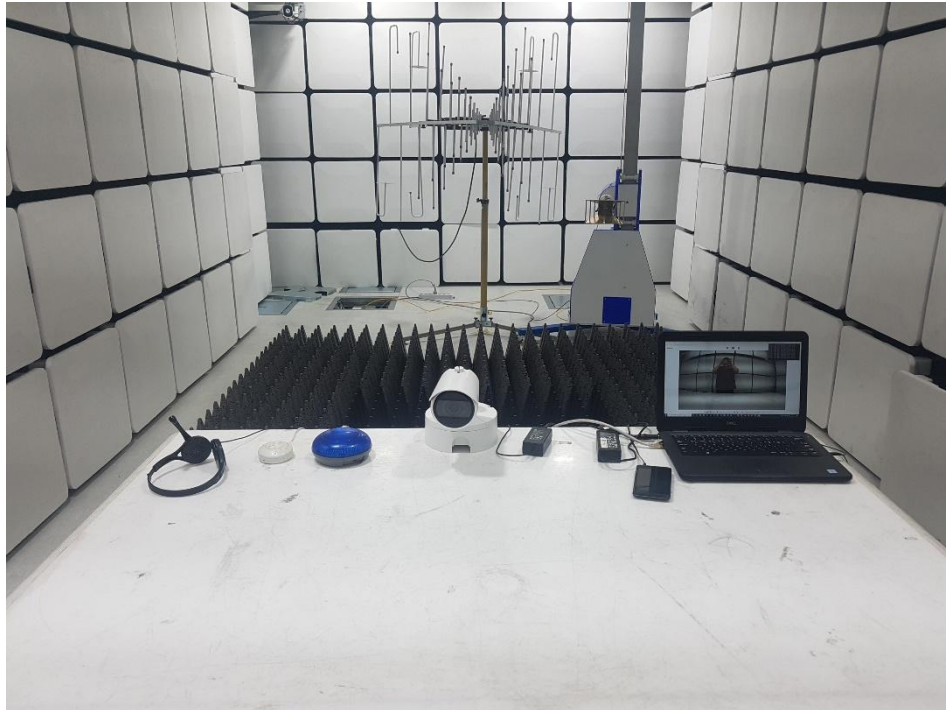
This report shall not be reproduced except in full, without the written approval of KES Co., Ltd.
The results shown in this test report refer only to the sample(s) tested unless otherwise stated.
The authenticity of the test report, contact shchoi@kes.co.kr

■ PoE Mode

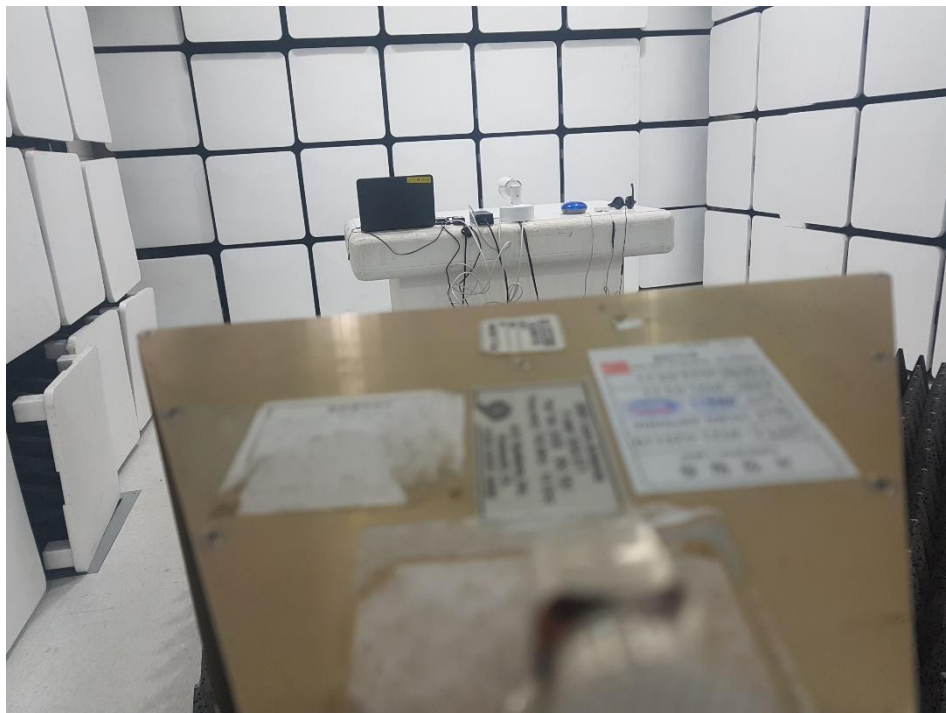
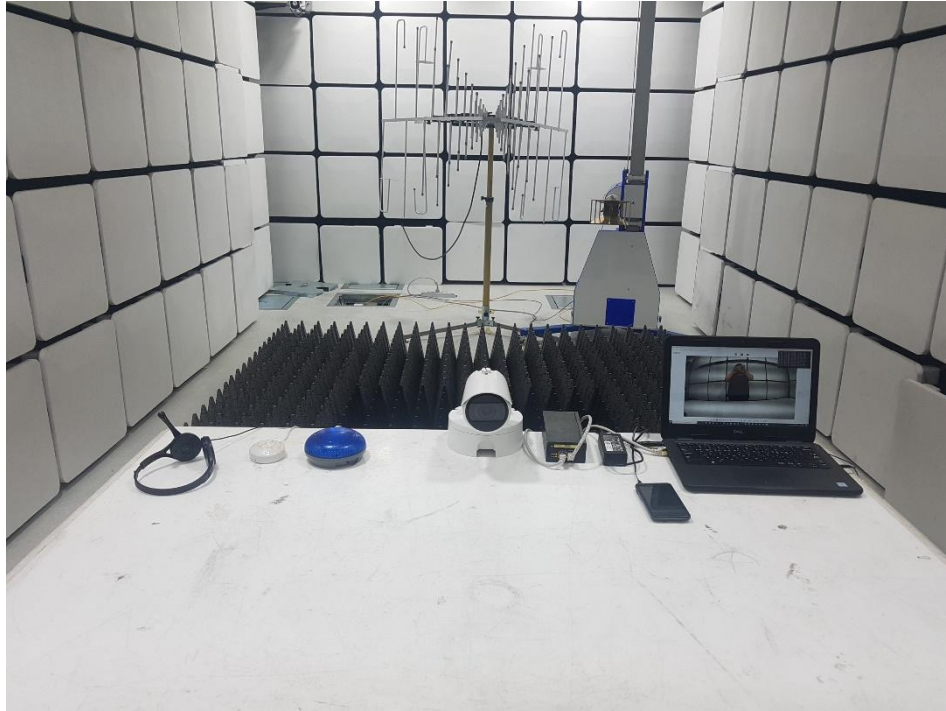
This report shall not be reproduced except in full, without the written approval of KES Co., Ltd.
The results shown in this test report refer only to the sample(s) tested unless otherwise stated.
The authenticity of the test report, contact shchoi@kes.co.kr

Radiated Electric Field Emissions(Above 1 GHz)

■ DC Mode



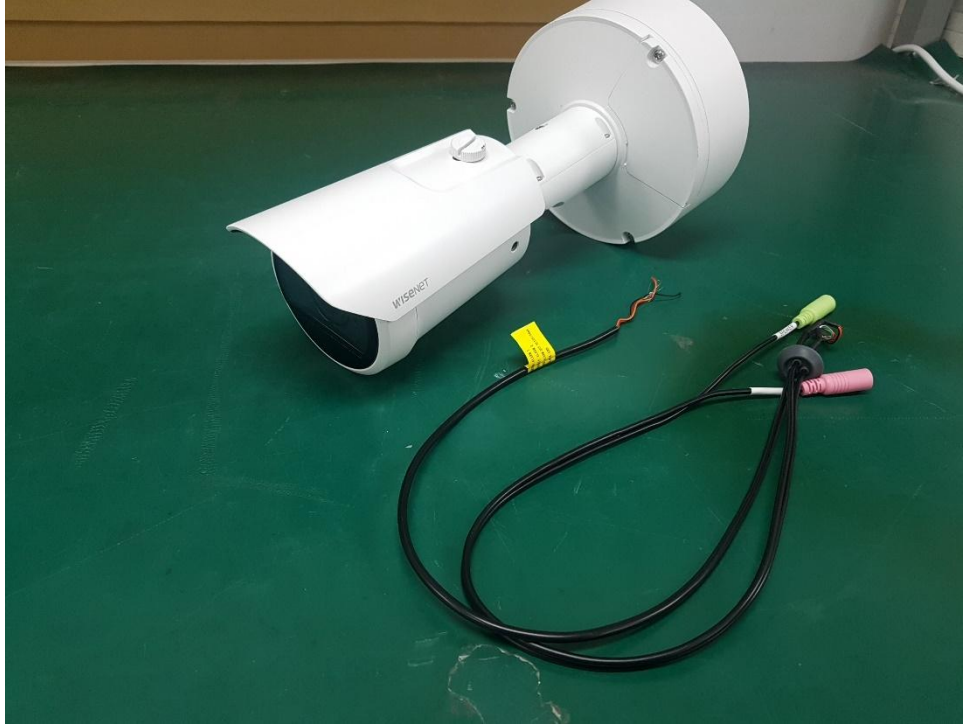
This report shall not be reproduced except in full, without the written approval of KES Co., Ltd.
The results shown in this test report refer only to the sample(s) tested unless otherwise stated.
The authenticity of the test report, contact shchoi@kes.co.kr

■ PoE Mode

This report shall not be reproduced except in full, without the written approval of KES Co., Ltd.
The results shown in this test report refer only to the sample(s) tested unless otherwise stated.
The authenticity of the test report, contact shchoi@kes.co.kr

EUT External Photographs

(Top)



(Bottom)



This report shall not be reproduced except in full, without the written approval of KES Co., Ltd.
The results shown in this test report refer only to the sample(s) tested unless otherwise stated.
The authenticity of the test report, contact shchoi@kes.co.kr

EUT Internal Photographs

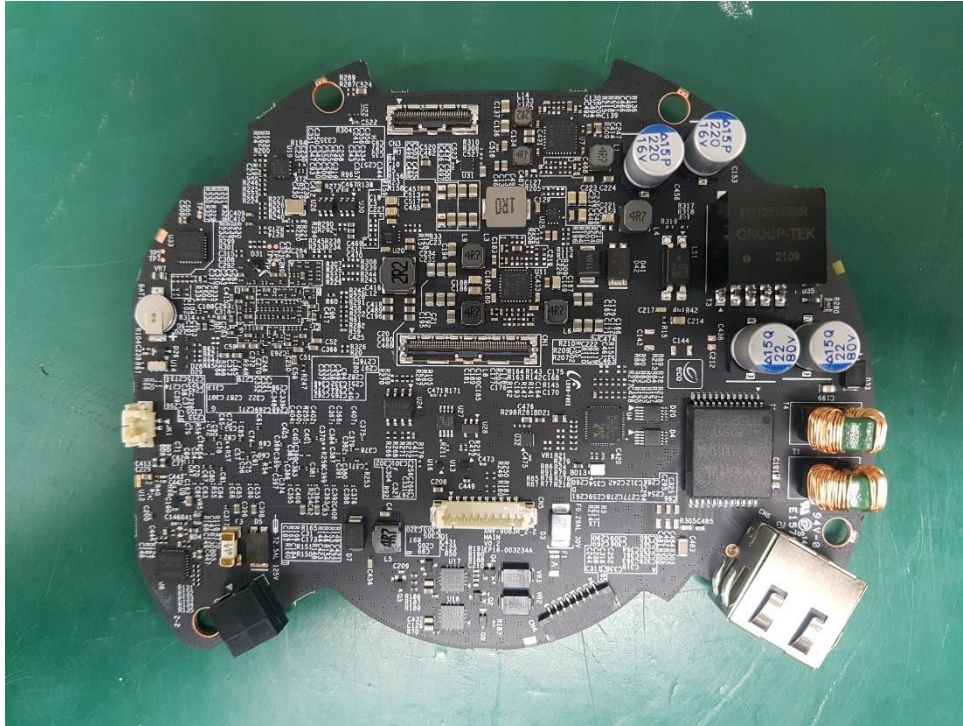
(Internal View)



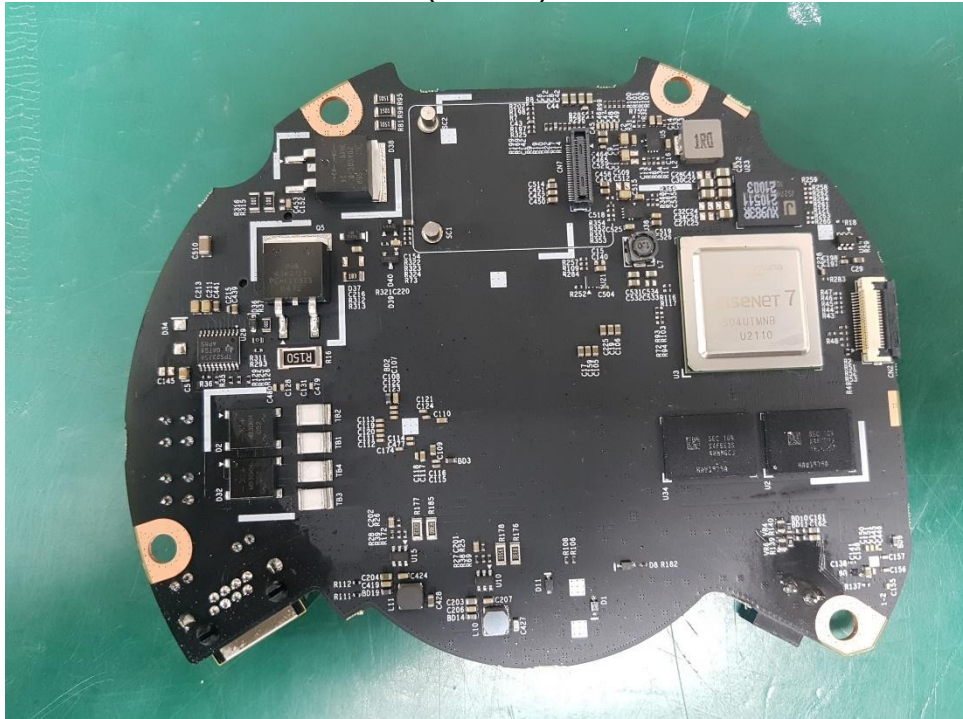
This report shall not be reproduced except in full, without the written approval of KES Co., Ltd.
The results shown in this test report refer only to the sample(s) tested unless otherwise stated.
The authenticity of the test report, contact shchoi@kes.co.kr

EUT Internal View – Board 1

(Top)



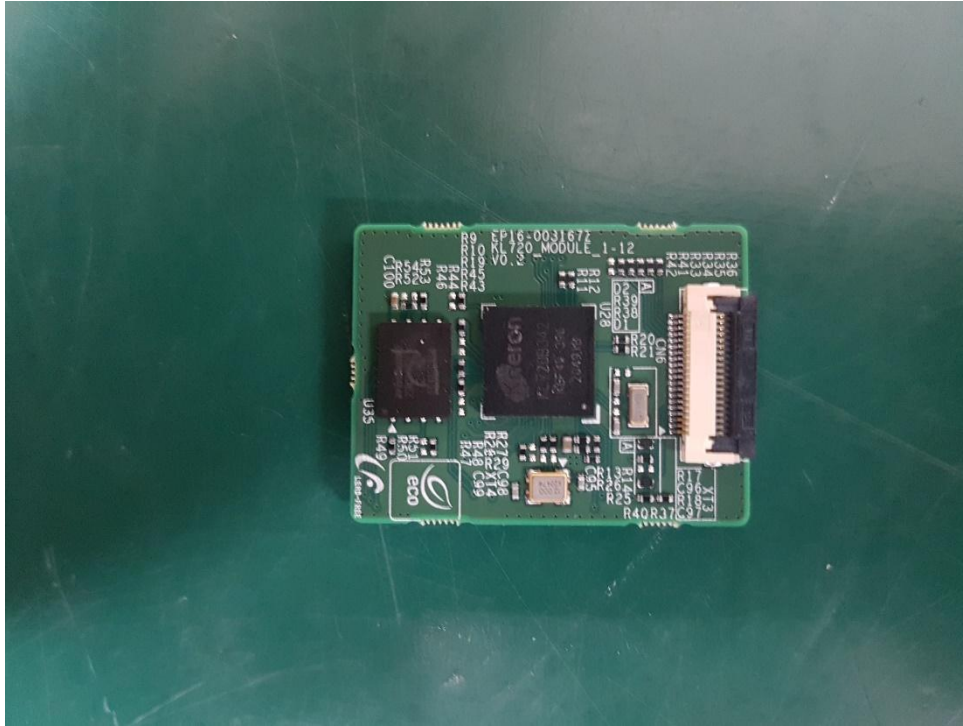
(Bottom)



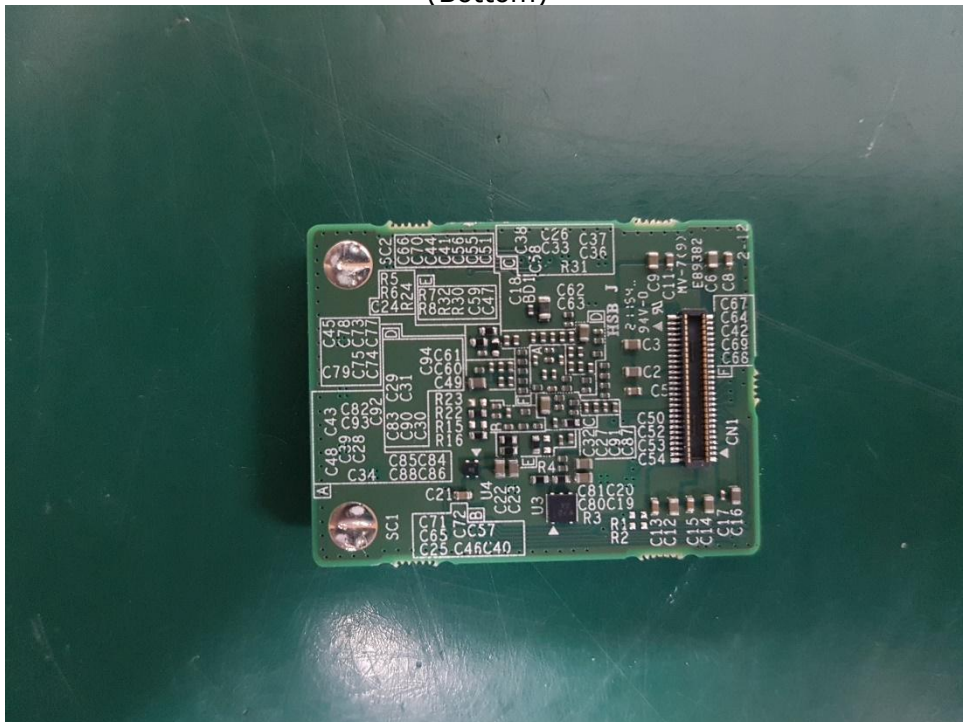
This report shall not be reproduced except in full, without the written approval of KES Co., Ltd.
The results shown in this test report refer only to the sample(s) tested unless otherwise stated.
The authenticity of the test report, contact shchoi@kes.co.kr

EUT Internal View – Board 2

(Top)



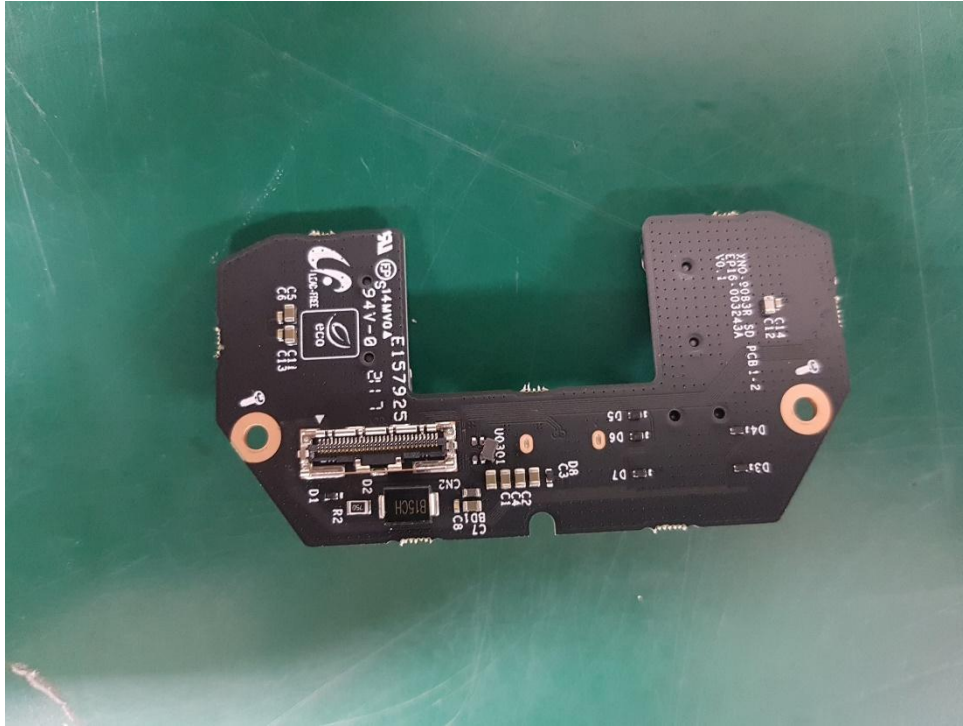
(Bottom)



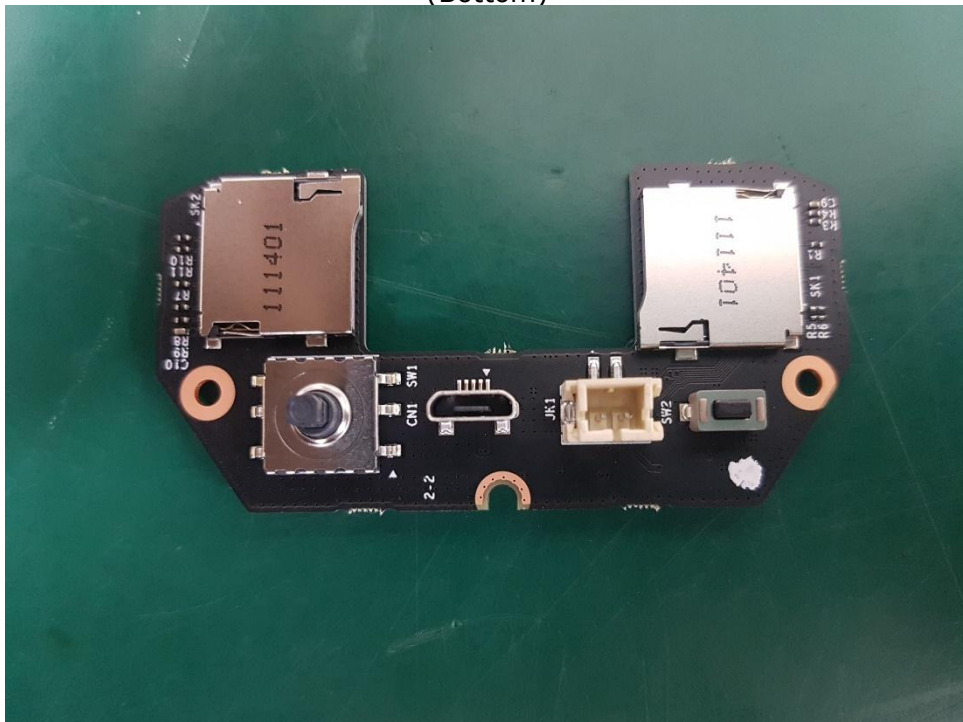
This report shall not be reproduced except in full, without the written approval of KES Co., Ltd.
 The results shown in this test report refer only to the sample(s) tested unless otherwise stated.
 The authenticity of the test report, contact shchoi@kes.co.kr

EUT Internal View – Board 3

(Top)



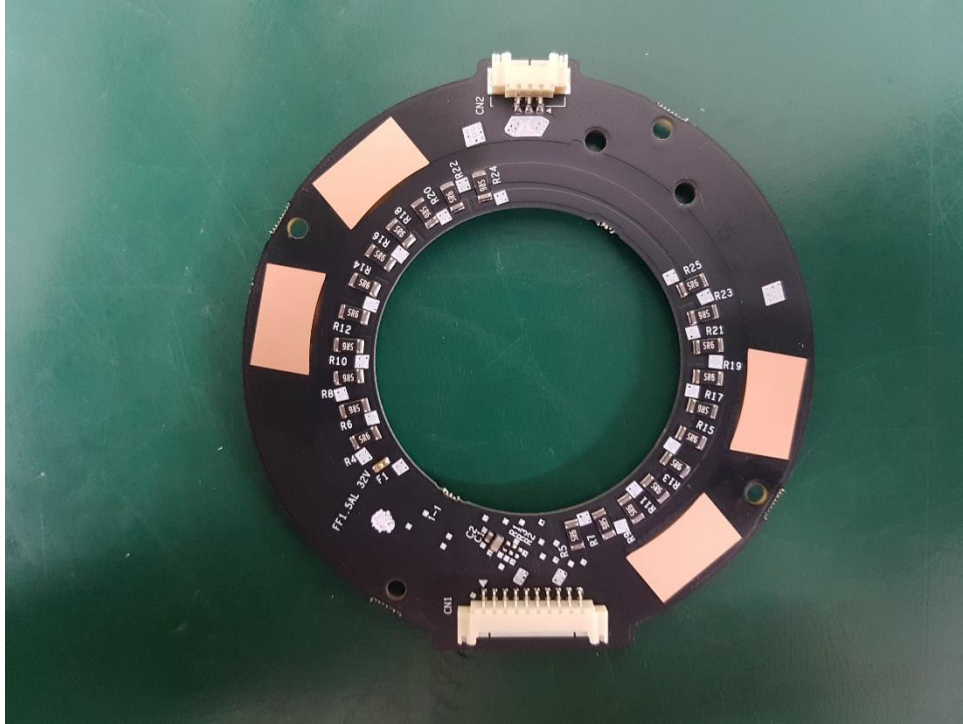
(Bottom)



This report shall not be reproduced except in full, without the written approval of KES Co., Ltd.
 The results shown in this test report refer only to the sample(s) tested unless otherwise stated.
 The authenticity of the test report, contact shchoi@kes.co.kr

EUT Internal View – Board 4

(Top)



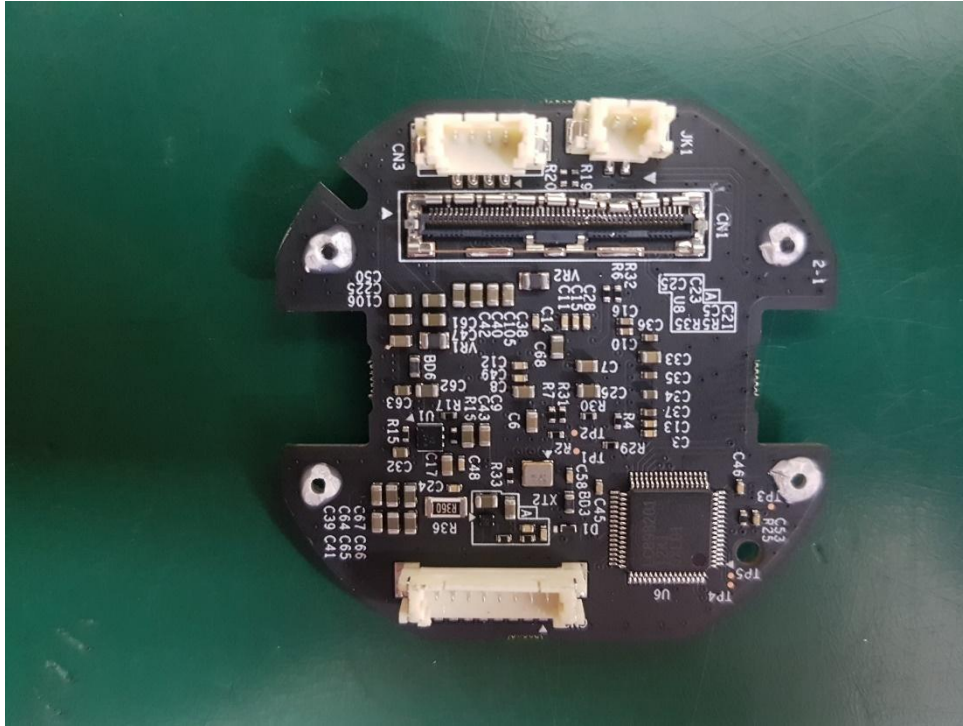
(Bottom)



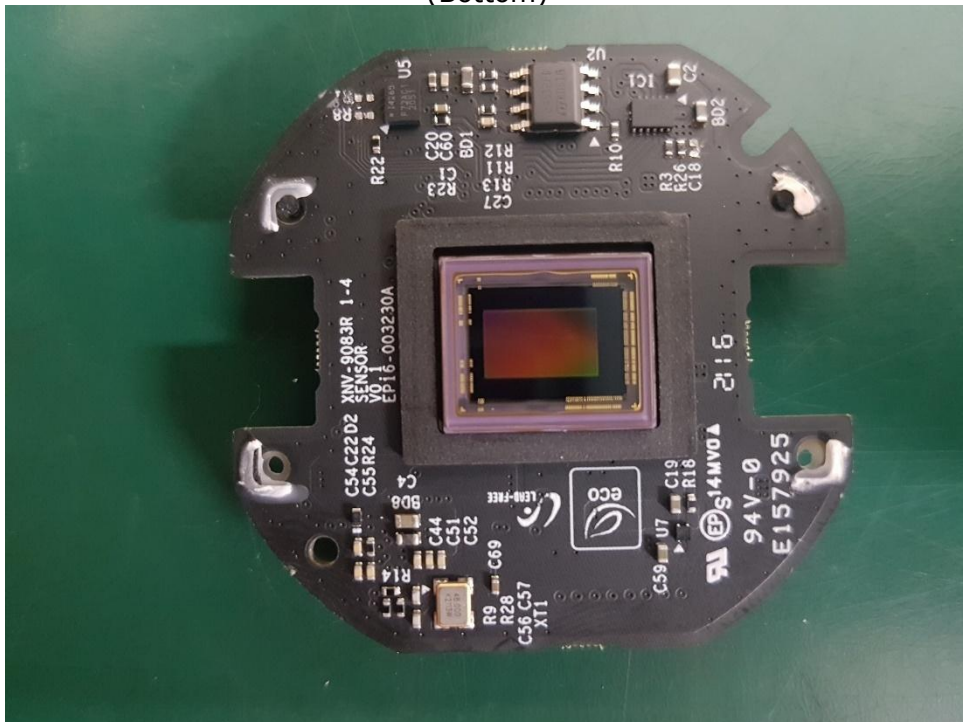
This report shall not be reproduced except in full, without the written approval of KES Co., Ltd.
 The results shown in this test report refer only to the sample(s) tested unless otherwise stated.
 The authenticity of the test report, contact shchoi@kes.co.kr

EUT Internal View – Board 5

(Top)



(Bottom)



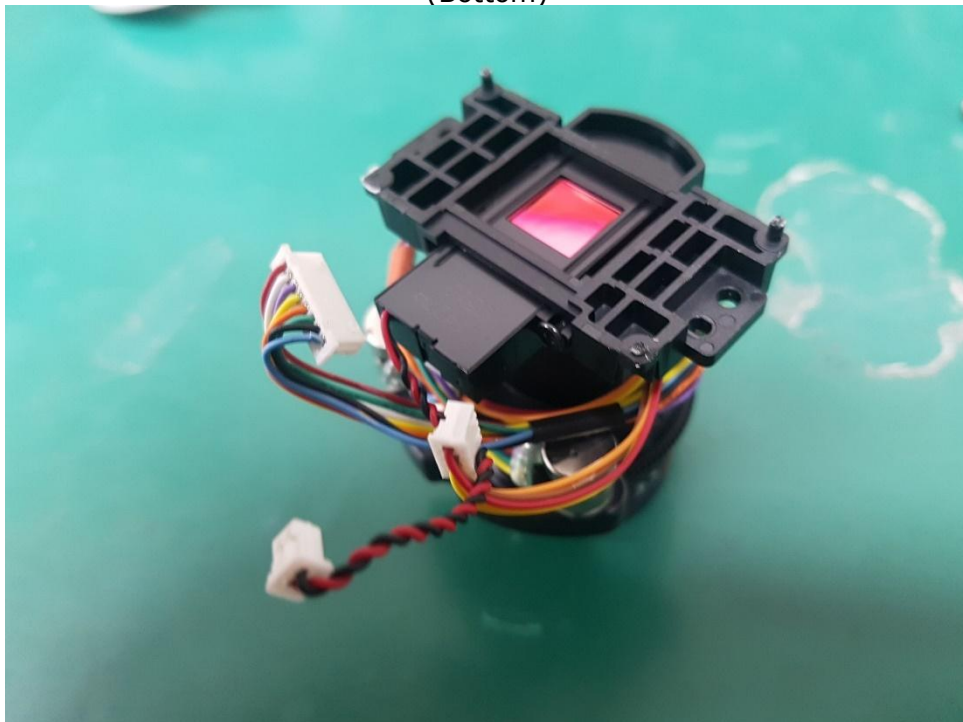
This report shall not be reproduced except in full, without the written approval of KES Co., Ltd.
 The results shown in this test report refer only to the sample(s) tested unless otherwise stated.
 The authenticity of the test report, contact shchoi@kes.co.kr

EUT Internal View – Lens

(Top)

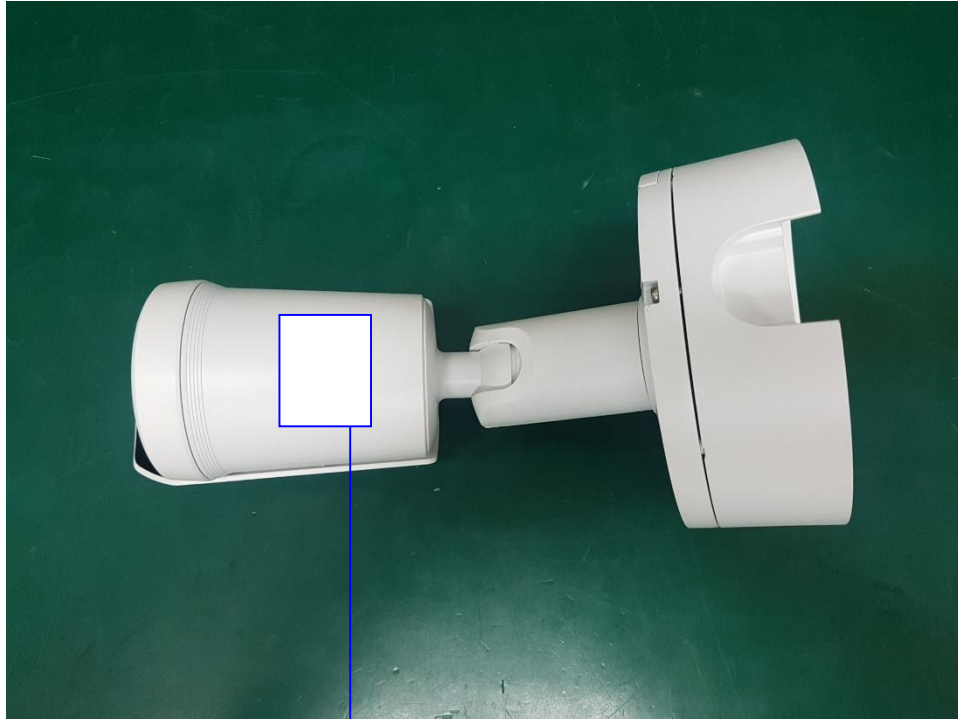


(Bottom)



This report shall not be reproduced except in full, without the written approval of KES Co., Ltd.
The results shown in this test report refer only to the sample(s) tested unless otherwise stated.
The authenticity of the test report, contact shchoi@kes.co.kr

Label Photographs



この装置は、クラスA情報技術装置です。この装置を家庭環境で使用すると電波妨害を引き起こすことがあります。この場合には使用者が適切な対策を講ずるよう要求されることがあります。

VCCI-A