

**KES Co., Ltd.**

3701, 40, Simin-daero 365beon-gil,
Dongan-gu, Anyang-si, Gyeonggi-do, 14057, Korea
Tel: +82-31-425-6200 / Fax: +82-31-424-0450
www.kes.co.kr

Report No.:

KES-EM-21T0597

Page (1) of (43)

EMC TEST REPORT

Test Report No. : KES-EM-21T0597

Date of Issue : Jul. 14, 2021

Product name : NETWORK CAMERA

Model/Type No. : XNO-9083R

Variant Model : -

Applicant : Hanwha Techwin Co., Ltd.

Applicant Address : 6, Pangyo-ro 319Beon-gil, Bundang-gu, Seongnam-si,
Gyeonggi-do, Republic of Korea

Manufacturer : 1. HANWHA TECHWIN SECURITY VIETNAM CO.,LTD.
2. D-TECH CO.,LTD.

Manufacturer Address : 1. Lot O-2, Que Vo Industrial Zone extended area,
Nam Son commune, Bac Ninh city, Bac Ninh province, Vietnam
2. 173-25, Saneop-ro, Gwonseon-gu, Suwon-si, Gyeonggi- do,
Korea (Suwon Industrial Complex)

Equipment authorization : **Supplier's Declaration of Conformity**

Date of Receipt : Jun. 15, 2021

Test date : Jul. 01, 2021 ~ Jul. 04, 2021

Test Results : ☒ **In Compliance** ☐ **Not in Compliance**

Tested by

Ki Man, Kim
EMC Test Engineer

Reviewed by

Dong-Hun, Jang
EMC Technical Manager

This test report is not related to KS Q ISO/IEC 17025 and KOLAS.

This report shall not be reproduced except in full, without the written approval of KES Co., Ltd.
The results shown in this test report refer only to the sample(s) tested unless otherwise stated.
The authenticity of the test report, contact shchoi@kes.co.kr

**KES Co., Ltd.**

3701, 40, Simin-daero 365beon-gil,
Dongan-gu, Anyang-si, Gyeonggi-do, 14057, Korea
Tel: +82-31-425-6200 / Fax: +82-31-424-0450
www.kes.co.kr

Report No.:

KES-EM-21T0597

Page (2) of (43)

REPORT REVISION HISTORY

Date	Test Report No.	Revision History
Jul. 14, 2021	KES-EM-21T0597	Issued

This report shall not be reproduced except in full, without the written approval of KES Co., Ltd. This document may be altered or revised by KES Co., Ltd. personnel only, and shall be noted in the revision section of the document. Any alteration of this document not carried out by KES Co., Ltd. will constitute fraud and shall nullify the document.

This report shall not be reproduced except in full, without the written approval of KES Co., Ltd.
The results shown in this test report refer only to the sample(s) tested unless otherwise stated.
The authenticity of the test report, contact shchoi@kes.co.kr



KES Co., Ltd.

3701, 40, Simin-daero 365beon-gil,
Dongan-gu, Anyang-si, Gyeonggi-do, 14057, Korea
Tel: +82-31-425-6200 / Fax: +82-31-424-0450
www.kes.co.kr

Report No.:

KES-EM-21T0597

Page (3) of (43)

TABLE OF CONTENTS

1.0	General Product Description.....	4
1.1	Test Voltage & Frequency	9
1.2	Variant Model Differences	9
1.3	Device Modifications	9
1.4	Equipment Under Test.....	9
1.5	Support Equipments	9
1.6	External I/O Cabling	10
1.7	EUT Operating Mode(s)	11
1.8	Configuration.....	12
1.9	Remarks when standards applied	13
1.10	Calibration Details of Equipment Used for Measurement.....	13
1.11	Test Facility	13
1.12	Laboratory Accreditations and Listings	13
2.0	Test Regulations.....	14
2.1	Conducted Emissions at Mains Power Ports.....	16
2.2	Radiated Electric Field Emissions(Below 1 GHz)	17
2.3	Radiated Electric Field Emissions(Above 1 GHz)	18
APPENDIX A – TEST DATA.....		19
Conducted Emissions at Mains Power Ports.....		19
Radiated Electric Field Emissions(Below 1 GHz)		23
Radiated Electric Field Emissions(Above 1 GHz)		27
Test Setup Photos and Configuration		29
Conducted Emissions at Mains Power Ports.....		29
Radiated Electric Field Emissions(Below 1 GHz)		31
Radiated Electric Field Emissions(Above 1 GHz)		33
EUT External Photographs		35
EUT Internal Photographs		36

This report shall not be reproduced except in full, without the written approval of KES Co., Ltd.
The results shown in this test report refer only to the sample(s) tested unless otherwise stated.
The authenticity of the test report, contact shchoi@kes.co.kr



1.0 General Product Description

Main Specifications of EUT are:

Video	
Imaging Device	1/1.8" progressive CMOS
Resolution	3840x2160, 3328x1872, 3072x1728, 2592x1944, 2688x1520, 1920x1080, 1600x1200, 1280x1024, 1280x960, 1280x720, 1024x768, 800x600, 800x448, 720x576, 720x480, 640x480, 640x360, 320x240
Max. Framerate	H.265/H.264: Max. 30fps/25fps(60Hz/50Hz) MJPEG: Max. 15fps/12fps(60Hz/50Hz)
NETD	None
Pixel Size	None
Min. Illumination	(TBD) Color: 0.04Lux(F1.3, 1/30sec) BW: 0.004Lux(F1.3, 1/30sec), 0Lux(IR LED on)
Video Out	CVBS: 1.0 Vp-p / 75Ω composite, 720x480(N), 720x576(P) for installation USB: Micro USB Type B, 1280x720 for installation
Video Transmission Distance	None
Lens	
Focal Length (Zoom Ratio)	4.4~9.3mm(2.1x) motorized varifocal
Max. Aperture Ratio	F1.3
Angular Field of View	H : 112.1°(Wide)~47.5°(Tele) V : 58.0°(Wide)~26.6°(Tele) D : 137.5°(Wide)~54.6°(Tele)
Min. Object Distance	0.5m(1.64ft)
Focus Control	Simple focus, Manual
Lens Type	P-iris(IR corrected)
Mount Type	None
Optional Lens	None
Pan / Tilt / Rotate	
Pan / Tilt / Rotate Range	None
Pan Range	None
Pan Speed	None

This report shall not be reproduced except in full, without the written approval of KES Co., Ltd.
The results shown in this test report refer only to the sample(s) tested unless otherwise stated.
The authenticity of the test report, contact shchoi@kes.co.kr

**KES Co., Ltd.**

3701, 40, Simin-daero 365beon-gil,
Dongan-gu, Anyang-si, Gyeonggi-do, 14057, Korea
Tel: +82-31-425-6200 / Fax: +82-31-424-0450
www.kes.co.kr

Report No.:

KES-EM-21T0597

Page (5) of (43)

Tilt Range	None
Tilt Speed	None
Rotate Range	None
Sequence	None
Preset Accuracy	None
Operational	
Camera Title	Displayed up to 85 characters
Direction Indicator	None
Day & Night	Auto(ICR)
Backlight Compensation	BLC, HLC, WDR, SDR
Wide Dynamic Range	extremeWDR (120dB)
Digital Noise Reduction	WiseNR II (Based on AI engine), SSNR V
Digital Image Stabilization	Support (built-in gyro sensor)
Defog	Support
Motion Detection	8ea, 8point Polygonal zones
Privacy Masking	32ea, Quadrangle zones - Color : Gray, Green, Red, Blue, Black, White - Mosaic
Gain Control	Support
White Balance	ATW / Narrow ATW / AWC / Manual / Indoor / Outdoor
LDC	Support (Fill/stretch mode)
Electronic Shutter Speed	Minimum / Maximum / Anti flicker (2~1/12,000sec) Auto prefer shutter control (Based on AI engine)
Digital PTZ	Support
Video Rotation	Flip, Mirror, Hallway view (90°/270°)
Analytics	- Analytics events based on AI engine (NPU) : Object detection (Person/Face/Vehicle(car/truck/bus/bicycle/motorcycle)/License plate), IVA (Virtual line/Area, Enter/Exit, Loitering, direction, intrusion) - Analytics events : Defocus detection, Motion detection, Tampering, Fog detection, Audio detection, Sound classification, Shock detection, Appear/Disappear
Business Intelligence	Based on AI engine (NPU) : People counting, Queue management, Heatmap

This report shall not be reproduced except in full, without the written approval of KES Co., Ltd.
The results shown in this test report refer only to the sample(s) tested unless otherwise stated.
The authenticity of the test report, contact shchoi@kes.co.kr

**KES Co., Ltd.**

3701, 40, Simin-daero 365beon-gil,
Dongan-gu, Anyang-si, Gyeonggi-do, 14057, Korea
Tel: +82-31-425-6200 / Fax: +82-31-424-0450
www.kes.co.kr

Report No.:

KES-EM-21T0597

Page (6) of (43)

Serial Interface	None
Alarm I/O	2 configurable I/O ports, DC 12V output(Max. 50mA)
Alarm Triggers	Analytics, Network disconnect, Alarm input, App event, Time schedule
Alarm Events	When alarm trigger occurred <ul style="list-style-type: none">- File upload(image) : e-mail/FTP- Notification : e-mail- Recording : SD/SDHC/SDXC or NAS recording at event triggers- Alarm output- Handover(PTZ preset, Send message by HTTP/HTTPS/TCP)- Audio clip playback- PTZ preset
Audio In	Selectable(mic in/line in) Supply voltage: 2.5VDC(4mA), Input impedance: 2K Ohm
Audio Out	Line out, Max.output level: 1Vrms
IR Viewable Length	WiseIR 50m(164.04ft)(TBD)
IR Illuminator (Optional)	None
Water Removal	None
Auto Tracking	None
Coaxial Protocol	None
Color Palettes	None
Radiometry	
Temperature Detect Range	None
Temperature Accuracy	None
Temperature Detection	None
Additional	None
Network	
Ethernet	Metal shielded RJ-45(10/100/1000BASE-T)
Video Compression	H.265/H.264: Main/High, MJPEG
Audio Compression	G.711 u-law /G.726 Selectable G.726(ADPCM) 8KHz, G.711 8KHz G.726: 16Kbps, 24Kbps, 32Kbps, 40Kbps AAC-LC: 48Kbps at 16KHz

This report shall not be reproduced except in full, without the written approval of KES Co., Ltd.
The results shown in this test report refer only to the sample(s) tested unless otherwise stated.
The authenticity of the test report, contact shchoi@kes.co.kr

**KES Co., Ltd.**

3701, 40, Simin-daero 365beon-gil,
Dongan-gu, Anyang-si, Gyeonggi-do, 14057, Korea
Tel: +82-31-425-6200 / Fax: +82-31-424-0450
www.kes.co.kr

Report No.:

KES-EM-21T0597

Page (7) of (43)

Smart Codec	Manual(5ea area), WiseStreamⅡ, WiseStreamⅢ(Based on AI engine)
Video Quality Adjustment	H.264/H.265: Target bitrate level control MJPEG: Target bitrate level control
Bitrate Control	H.264/H.265: CBR or VBR MJPEG: VBR
Streaming	Unicast(20 users) / Multicast Multiple streaming(Up to 10 profiles, 3 virtual channel support)
Protocol	IPv4, IPv6, TCP/IP, UDP/IP, RTP(UDP), RTP(TCP), RTCP, RTSP, NTP, HTTP, HTTPS, SSL/TLS, DHCP, FTP, SMTP, ICMP, IGMP, SNMPv1/v2c/v3(MIB-2), ARP, DNS, DDNS, QoS, UPnP, Bonjour, LLDP, SRTP (TCP, UDP Unicast)
Security	TPM 2.0 (FIPS 140-2 level 2) HTTPS(SSL) Login Authentication Digest Login Authentication IP Address Filtering User access log 802.1X Authentication(EAP-TLS, EAP-LEAP, EAP-PEAP MSCHAPv2) Device Certificate(Hanwha Techwin Root CA, pre-installed) Secure by default certificate(TBD) Secure OS/Boot/Storage, Verify firmware forgery
Application Programming Interface	ONVIF Profile S/G/T SUNAPI(HTTP API) Wisenet open platform
General	
Webpage Language	English, Korean, Chinese, French, Italian, Spanish, German, Japanese, Russian, Swedish,, Portuguese, Czech, Polish, Turkish, Dutch, Greek, Hungarian
Web Viewer	None
Edge Storage	Micro SD/SDHC/SDXC 2slot Max. 1TB (512GB * 2)
Memory	4GB RAM, 512MB Flash
Environmental & Electrical	

This report shall not be reproduced except in full, without the written approval of KES Co., Ltd.
The results shown in this test report refer only to the sample(s) tested unless otherwise stated.
The authenticity of the test report, contact shchoi@kes.co.kr

**KES Co., Ltd.**

3701, 40, Simin-daero 365beon-gil,
Dongan-gu, Anyang-si, Gyeonggi-do, 14057, Korea
Tel: +82-31-425-6200 / Fax: +82-31-424-0450
www.kes.co.kr

Report No.:

KES-EM-21T0597

Page (8) of (43)

Operating Temperature / Humidity	-50°C ~ +60°C(-58°F ~ +140°F) NEMA TS-2 : 74°C * Start up should be done at above -30°C less than 95%RH(non-condensing) Humidity control /w GORE vent
Storage Temperature / Humidity	-50°C ~ +60°C(-58°F ~ +140°F) / Less than 90% RH
Certification	IP66/IP67, NEMA4X, IK10
Input Voltage	PoE+(IEEE802.3at, Class4), 12VDC
Power Consumption	TBD Power redundancy failover
Mechanical	
Color / Material	White / Aluminum Hard-coated window
RAL Code	RAL7022
Product Dimensions / Weight	Ø91x368.6mm(Ø3.85"x14.51"), 2.2kg(4.85 lb) (TBD)
Compatible Conduit hole / Gangbox	3/4" (M25) single, double, 4" octagon, 4" square
Hanging Mount (Dome)	None
Skin Cover (Dome)	None
Weather Cap (Dome)	None
Power Module	None
Backbox	None
DORI (EN62676-4 standard)	
Detect (25PPM/ 8PPF)	Wide: 51.7m(169.64ft) / Tele: 174.5m(572.64ft)
Observe (63PPM/ 19PPF)	Wide: 20.7m(67.85ft) / Tele: 69.8m(229.06ft)
Recognize (125PPM/ 38PPF)	Wide: 10.3m(33.93ft) / Tele: 34.9m(114.53ft)
Identify (250PPM/ 76PPF)	Wide: 5.2m(16.96ft) / Tele: 17.5m(57.26ft)

This report shall not be reproduced except in full, without the written approval of KES Co., Ltd.
The results shown in this test report refer only to the sample(s) tested unless otherwise stated.
The authenticity of the test report, contact shchoi@kes.co.kr



1.1 Test Voltage & Frequency

Unless indicated otherwise on the individual data sheet or test results, the test voltage and frequency was as indicated below.

☒ AC 120 V, 60 Hz ☒ PoE

1.2 Variant Model Differences

Not applicable

1.3 Device Modifications

Not applicable

1.4 Equipment Under Test

Description	Model Number	Serial Number	Manufacturer	Remarks
NETWORK CAMERA	XNO-9083R	-	HANWHA TECHWIN SECURITY VIETNAM CO.,LTD.	EUT

1.5 Support Equipments

Description	Model Number	Serial Number	Manufacturer	Remarks
Adaptor	2ACB022F	-	Channel Well Technology (Guangzhou) Co., Ltd.	-
PoE Adaptor	PSE156G 4-Pair,Hi- Power	-	-	-
Notebook	P95G001	8KM8HT2	DELL	-
Notebook Adaptor	LA65NS2-01	-	LITE-ON TECHNOLOGY(CHANGZ HOU)CO.,LTD.	-
Alarm1	-	-	-	-
Alarm2	-	-	-	-
Smartphone	LG-SU760	108KPQJ0186212	LG	-
Headset	K550	-	Britz®	-
Micro SD Card1	-	-	Sandisk	8 GB
Micro SD Card2	-	-	Sandisk	8 GB

This report shall not be reproduced except in full, without the written approval of KES Co., Ltd.
The results shown in this test report refer only to the sample(s) tested unless otherwise stated.
The authenticity of the test report, contact shchoi@kes.co.kr



KES Co., Ltd.

3701, 40, Simin-daero 365beon-gil,
Dongan-gu, Anyang-si, Gyeonggi-do, 14057, Korea
Tel: +82-31-425-6200 / Fax: +82-31-424-0450
www.kes.co.kr

Report No.:

KES-EM-21T0597

Page (10) of (43)

1.6 External I/O Cabling

■ DC Mode

Start		END		Cable Spec.	
Description	I/O Port	Description	I/O Port	Length	Shield
NETWORK CAMERA (EUT)	RJ-45 (LAN)	Notebook	RJ-45 (LAN)	3.0	S
	Slot	Micro SD Card1	Slot	-	-
	Slot	Micro SD Card2	Slot	-	-
	3 Pin	Alarm1	3 Pin	3.0	U
	2 Pin	Alarm2	2 Pin	3.0	U
	3.5 mm	Headset	3.5 mm	1.7	U
	3.5 mm			1.7	U
	2 Pin	Adaptor	2 Pin	1.6	U
Notebook	3.5 mm	Smartphone	3.5 mm	0.8	U
	JACK	Notebook Adaptor	JACK	1.7	U

* Unshielded=U, Shielded=S

■ PoE Mode

Start		END		Cable Spec.	
Description	I/O Port	Description	I/O Port	Length	Shield
NETWORK CAMERA (EUT)	RJ-45 (PoE)	PoE Adaptor	RJ-45 (PoE)	3.0	S
	Slot	Micro SD Card1	Slot	-	-
	Slot	Micro SD Card2	Slot	-	-
	3 Pin	Alarm1	3 Pin	3.0	U
	2 Pin	Alarm2	2 Pin	3.0	U
	3.5 mm	Headset	3.5 mm	1.7	U
	3.5 mm			1.7	U
Notebook	RJ-45 (LAN)	PoE Adaptor	RJ-45 (LAN)	3.5	S
	3.5 mm	Smartphone	3.5 mm	0.8	U
	JACK	Notebook Adaptor	JACK	1.7	U

* Unshielded=U, Shielded=S

This report shall not be reproduced except in full, without the written approval of KES Co., Ltd.
The results shown in this test report refer only to the sample(s) tested unless otherwise stated.
The authenticity of the test report, contact shchoi@kes.co.kr

**KES Co., Ltd.**

3701, 40, Simin-daero 365beon-gil,
Dongan-gu, Anyang-si, Gyeonggi-do, 14057, Korea
Tel: +82-31-425-6200 / Fax: +82-31-424-0450
www.kes.co.kr

Report No.:

KES-EM-21T0597

Page (11) of (43)

1.7 EUT Operating Mode(s)

Test Mode	operating
DC Mode	EUT Monitoring, Ping Test
PoE Mode	

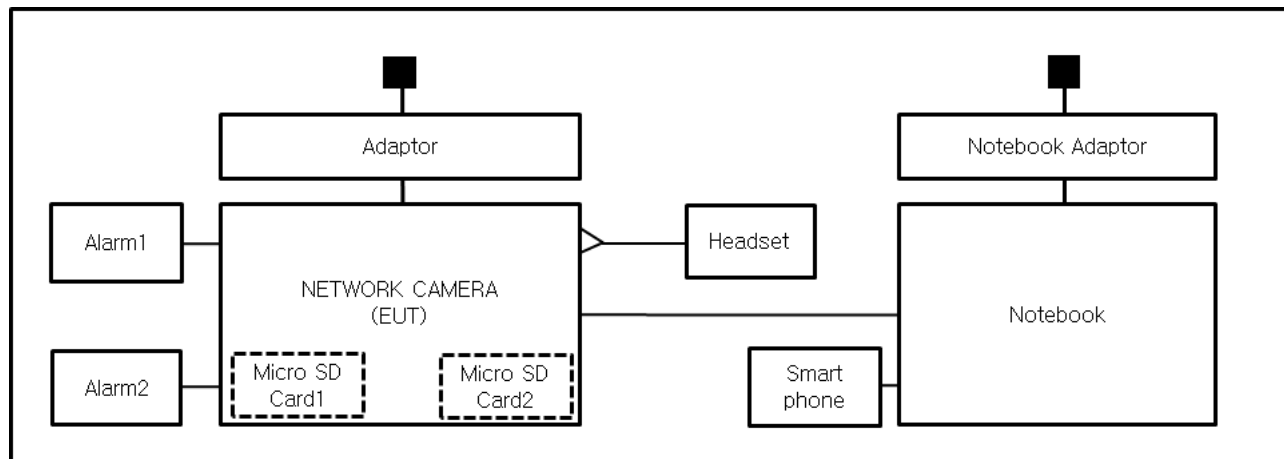
EUT Test operating S/W		
Name	Version	Manufacture Company
Web Viewer	-	Hanwha Techwin Co., Ltd.

This report shall not be reproduced except in full, without the written approval of KES Co., Ltd.
The results shown in this test report refer only to the sample(s) tested unless otherwise stated.
The authenticity of the test report, contact shchoi@kes.co.kr

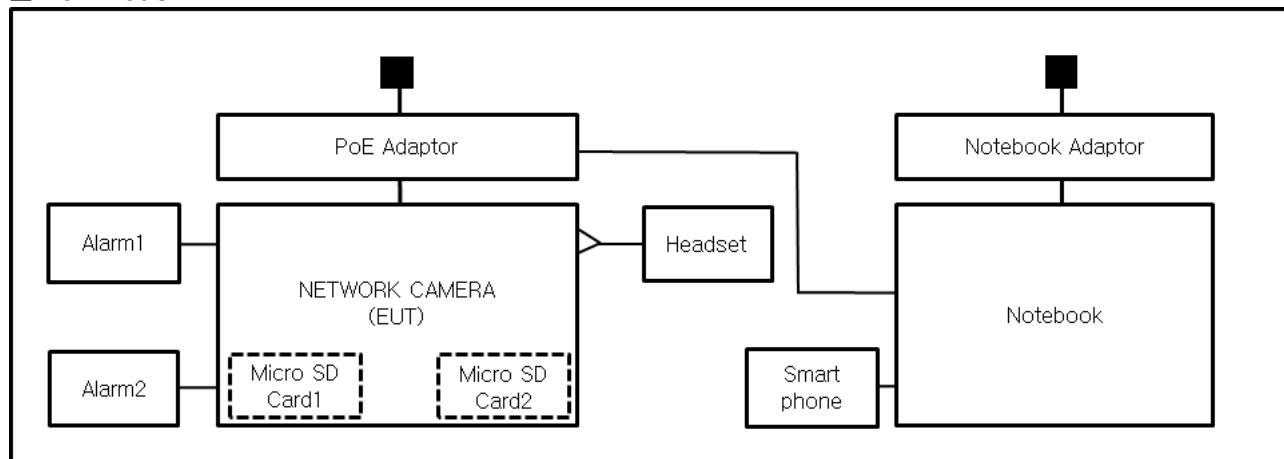
1.8 Configuration

■ AC Main
 □ DC Main

■ DC Mode



■ PoE Mode



1.9 Remarks when standards applied

- USB ports, VIDEO ports are not used and have not been tested.







1.10 Calibration Details of Equipment Used for Measurement

Test equipment and test accessories are calibrated on regular basis. The maximum time between calibrations is one year or what is recommended by the manufacturer, whichever is less.

1.11 Test Facility

The measurement facility is located at 473-21 Gayeo-ro, Yeosu-si, Gyeonggi-do, 12658, Korea. The sites are constructed in conformance with the requirements of ANSI C63.4:2014 and CISPR 16-1-4:2012

1.12 Laboratory Accreditations and Listings

Country	Agency	Scope of Accreditation	Logo
KOREA	RRA	EMI (3 m & 10 m Semi-Anechoic Chamber , 10 m Open Area and conducted test site) EMS (ESD, RS, EFT/Burst, Surge, CS, Magnetic, Dips and interruptions)	 KR0100
International	KOLAS	EMI (3 m & 10 m Semi-Anechoic Chamber , and conducted test site) EMS (ESD, RS, EFT/Burst, Surge, CS, Magnetic, Dips and interruptions)	 KT489
USA	FCC	3 m & 10 m Semi-Anechoic Chamber, 10 m Open Area and Conducted test site to perform FCC Part 15/18 measurements.	 KR0100
Canada	ISED	3 m & 10 m Semi-Anechoic Chamber and Conducted test site	 23298-1
JAPAN	VCCI	Mains Ports Conducted Interference Measurement, Telecommunication Ports Conducted Disturbance Measurement and Radiation 10 meter site, Facility for measuring radiated disturbance above 1 GHz	 R-20056, C-20036, T-20040, G-20057
Europe	TÜV SÜD	EMI (3 m & 10 m Semi-Anechoic Chamber , 10 m Open Area and conducted test site) EMS (ESD, RS, EFT/Burst, Surge, CS, Magnetic, Dips and interruptions)	 CARAT 001633 0004



2.0 Test Regulations

The emissions tests were performed according to following regulations:

☐ **EMC – Directive 2014/30/EU**

☐ EN 61000-6-3:2011

☐ EN 61000-6-1:2007

☐ EN 61000-6-4:2007 +A1:2011

☐ EN 61000-6-2:2005

☐ EN 55011:2007 +A1:2010

☐ Group 1
☐ Class A

☐ Group 2
☐ Class B

☐ EN 55014-1:2006 +A2:2011

☐ EN 55014-2:1997 +A2:2008

☐ EN 55015:2013

☐ EN 55032:2015

☐ Class A

☐ Class B

☐ EN 55024:2010

☐ EN 50130-4:2011 +A1:2014

☐ EN 61000-3-2:2014

☐ EN 61000-3-3:2013

☐ EN 61326-1:2013



KES Co., Ltd.

3701, 40, Simin-daero 365beon-gil,
Dongan-gu, Anyang-si, Gyeonggi-do, 14057, Korea
Tel: +82-31-425-6200 / Fax: +82-31-424-0450
www.kes.co.kr

Report No.:

KES-EM-21T0597

Page (15) of (43)

-
- | | | |
|---|---|----------------------------------|
| <input type="checkbox"/> VCCI-CISPR 32:2016 | <input type="checkbox"/> Class A | <input type="checkbox"/> Class B |
| <input type="checkbox"/> AS/NZS CISPR32:2015 | <input type="checkbox"/> Class A | <input type="checkbox"/> Class B |
| <input checked="" type="checkbox"/> 47 CFR Part 15, Subpart B | | |
| <input type="checkbox"/> CISPR 22:2009 +A1:2010 | <input type="checkbox"/> Class A | <input type="checkbox"/> Class B |
| <input checked="" type="checkbox"/> ANSI C63.4-2017 | <input checked="" type="checkbox"/> Class A | <input type="checkbox"/> Class B |
| <input checked="" type="checkbox"/> IC Regulation ICES-003 Issue 7 | | |
| <input checked="" type="checkbox"/> CAN/CSA CISPR 32-17 | <input checked="" type="checkbox"/> Class A | <input type="checkbox"/> Class B |
| <input type="checkbox"/> ANSI C63.4-2017 | <input type="checkbox"/> Class A | <input type="checkbox"/> Class B |
| <input type="checkbox"/> RE- Directive 2014/53/EU | | |
| <input type="checkbox"/> EN 301 489-1 V1.9.2 | | |
| <input type="checkbox"/> Equipment for fixed use | | |
| <input type="checkbox"/> Equipment for vehicular use | | |
| <input type="checkbox"/> Equipment for portable use | | |
| <input type="checkbox"/> EN 301 489-3 V1.6.1 | | |
| <input type="checkbox"/> EN 301 489-17 V2.2.1 | | |
| <input type="checkbox"/> EN 60945:2002 | | |

This report shall not be reproduced except in full, without the written approval of KES Co., Ltd.
The results shown in this test report refer only to the sample(s) tested unless otherwise stated.
The authenticity of the test report, contact shchoi@kes.co.kr

**KES Co., Ltd.**

3701, 40, Simin-daero 365beon-gil,
Dongan-gu, Anyang-si, Gyeonggi-do, 14057, Korea
Tel: +82-31-425-6200 / Fax: +82-31-424-0450
www.kes.co.kr

Report No.:

KES-EM-21T0597

Page (16) of (43)

2.1 Conducted Emissions at Mains Power Ports

Test Date

Jul. 01, 2021

Test Location

Electro wave Shieldroom #6

Test Equipment

Used	Description	Model Number	Manufacturer	Serial Number	Cal. Due
<input checked="" type="checkbox"/>	EMI Test S/W	EMC32	R & S	9.12.00	-
<input checked="" type="checkbox"/>	EMI TEST RECEIVER	ESR3	R & S	101783	01, 15, 2022
<input checked="" type="checkbox"/>	LISN	ENV216	R & S	101787	12, 29, 2021
<input checked="" type="checkbox"/>	LISN	ESH2-Z5	R & S	100450	12, 29, 2021
<input checked="" type="checkbox"/>	PULSE LIMITER	ESH3-Z2	R & S	101915	12, 29, 2021

Test Conditions

Temperature: (24,6 ± 0,2) °C

Relative Humidity: (46,7 ± 0,3) % R.H.

Frequency Range of Measurement

150 kHz to 30 MHz

Instrument Settings

IF Band Width: 9 kHz

Test Results

The requirements are:

- ☒ PASS
☐ NOT PASS
☐ NOT APPLICABLE

RemarksSee Appendix A for test data.

This report shall not be reproduced except in full, without the written approval of KES Co., Ltd.
The results shown in this test report refer only to the sample(s) tested unless otherwise stated.
The authenticity of the test report, contact shchoi@kes.co.kr

**KES Co., Ltd.**

3701, 40, Simin-daero 365beon-gil,
Dongan-gu, Anyang-si, Gyeonggi-do, 14057, Korea
Tel: +82-31-425-6200 / Fax: +82-31-424-0450
www.kes.co.kr

Report No.:

KES-EM-21T0597

Page (17) of (43)

2.2 Radiated Electric Field Emissions(Below 1 GHz)

Test Date

Jul. 01, 2021

Test Location☐ OPEN AREA TEST SITE #2☒ SEMI ANECHOIC CHAMBER #4(10m)**Test Equipment**

Used	Description	Model Number	Manufacturer	Serial Number	Cal. Due
<input checked="" type="checkbox"/>	EMI Test S/W	EP5/RE	TOYO Corporation	6.0.0	-
<input checked="" type="checkbox"/>	EMI TEST RECEIVER	ESU26	R & S	100551	04, 01, 2022
<input checked="" type="checkbox"/>	AMPLIFIER	SCU 01	R & S	100603	11, 25, 2021
<input checked="" type="checkbox"/>	TRILOG-BROADBAND ANTENNA	VULB9163	Schwarzbeck	715	12, 08, 2022
<input checked="" type="checkbox"/>	ATTENUATOR	8491A	HP	32173	03, 10, 2022

Test Conditions

Temperature: (24,4 ± 0,3) °C

Relative Humidity: (46,5 ± 0,5) % R.H.

Frequency Range of Measurement

30 MHz to 1 GHz

Instrument Settings

IF Band Width: 120 kHz

Test Results

The requirements are:

- ☒ PASS
☐ NOT PASS
☐ NOT APPLICABLE

RemarksSee Appendix A for test data.

This report shall not be reproduced except in full, without the written approval of KES Co., Ltd.
The results shown in this test report refer only to the sample(s) tested unless otherwise stated.
The authenticity of the test report, contact shchoi@kes.co.kr

**KES Co., Ltd.**

3701, 40, Simin-daero 365beon-gil,
Dongan-gu, Anyang-si, Gyeonggi-do, 14057, Korea
Tel: +82-31-425-6200 / Fax: +82-31-424-0450
www.kes.co.kr

Report No.:

KES-EM-21T0597

Page (18) of (43)

2.3 Radiated Electric Field Emissions(Above 1 GHz)

Test Date

Jul. 04, 2021

Test Location

SEMI ANECHOIC CHAMBER #5

Test Equipment

Used	Description	Model Number	Manufacturer	Serial Number	Cal. Due
<input checked="" type="checkbox"/>	EMI Test S/W	EP5/RE	TOYO Corporation	6.0.120	-
<input checked="" type="checkbox"/>	EMI TEST RECEIVER	ESU26	Rohde & Schwarz	100552	04, 01, 2022
<input checked="" type="checkbox"/>	HORN ANTENNA	BBHA 9120D	SCHWARZBECK	9120D-1802	12, 14, 2021
<input checked="" type="checkbox"/>	PREAMPLIFIER	8449B	HP	3008A00538	06, 21, 2022

Test Conditions

Temperature: (24,5 ± 0,5) °C

Relative Humidity: (47,0 ± 0,6) % R.H.

Frequency Range of Measurement

1 GHz to 5 GHz

Instrument Settings

IF Band Width: 1 MHz

Test Results

The requirements are:

- ☒ PASS
☐ NOT PASS
☐ NOT APPLICABLE

RemarksSee Appendix A for test data.

This report shall not be reproduced except in full, without the written approval of KES Co., Ltd.
The results shown in this test report refer only to the sample(s) tested unless otherwise stated.
The authenticity of the test report, contact shchoi@kes.co.kr

APPENDIX A – TEST DATA

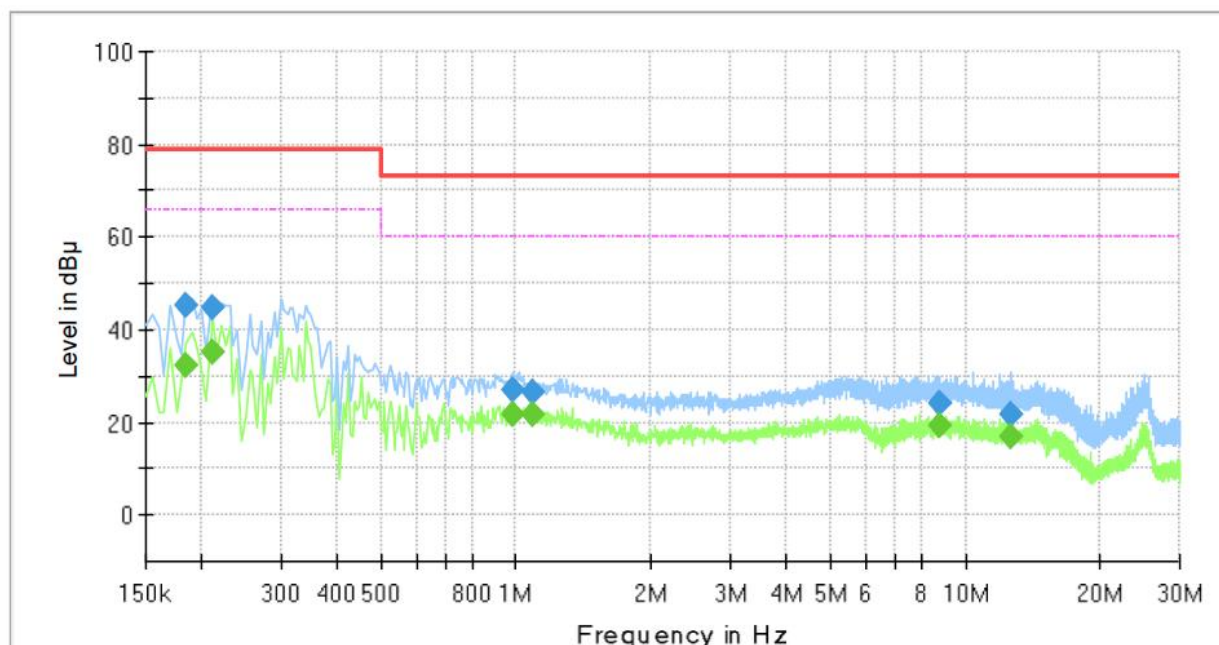
Conducted Emissions at Mains Power Ports

■ DC Mode

HOT LINE

Common Information

Test Description:	Conducted Emission
Model No.:	XNO-9083R
Phase:	L1
Mode:	DC
Operator Name:	KES



Final Result

Frequency (MHz)	QuasiPeak (dBμV)	CAverage (dBμV)	Limit (dBμV)	Margin (dB)	Meas. Time (ms)	Bandwidth (kHz)	Line	Corr. (dB)
0.185000	---	32.40	66.00	33.60	1000.0	9.000	L1	19.4
0.185000	45.46	---	79.00	33.54	1000.0	9.000	L1	19.4
0.210000	---	34.99	66.00	31.01	1000.0	9.000	L1	19.4
0.210000	44.60	---	79.00	34.40	1000.0	9.000	L1	19.4
0.985000	---	21.94	60.00	38.06	1000.0	9.000	L1	20.0
0.985000	26.84	---	73.00	46.16	1000.0	9.000	L1	20.0
1.095000	---	21.80	60.00	38.20	1000.0	9.000	L1	20.1
1.095000	26.30	---	73.00	46.70	1000.0	9.000	L1	20.1
8.800000	---	19.12	60.00	40.88	1000.0	9.000	L1	19.7
8.800000	24.23	---	73.00	48.77	1000.0	9.000	L1	19.7
12.575000	---	17.04	60.00	42.96	1000.0	9.000	L1	20.0
12.575000	21.75	---	73.00	51.25	1000.0	9.000	L1	20.0

This report shall not be reproduced except in full, without the written approval of KES Co., Ltd.
 The results shown in this test report refer only to the sample(s) tested unless otherwise stated.
 The authenticity of the test report, contact shchoi@kes.co.kr



KES Co., Ltd.

3701, 40, Simin-daero 365beon-gil,
Dongan-gu, Anyang-si, Gyeonggi-do, 14057, Korea
Tel: +82-31-425-6200 / Fax: +82-31-424-0450
www.kes.co.kr

Report No.:

KES-EM-21T0597

Page (20) of (43)

NEUTRAL LINE

Common Information

Test Description:

Model No.:

Phase:

Mode:

Operator Name:

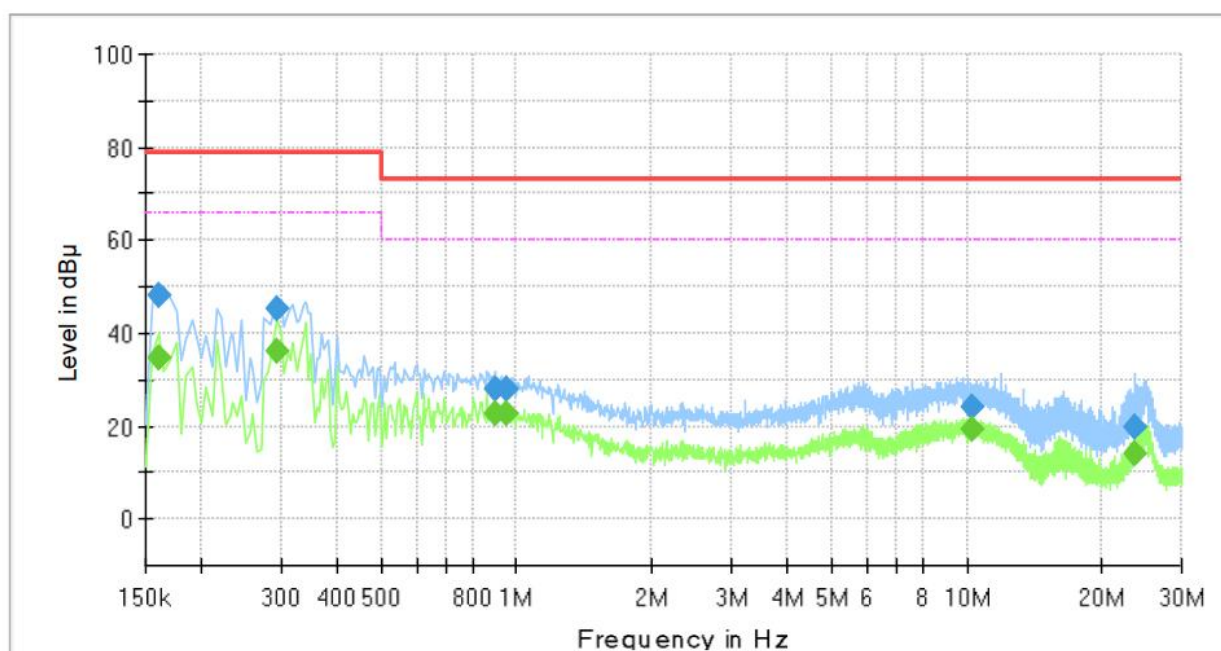
Conducted Emission

XNO-9083R

N

DC

KES



Final Result

Frequency (MHz)	QuasiPeak (dBμV)	CAverage (dBμV)	Limit (dBμV)	Margin (dB)	Meas. Time (ms)	Bandwidth (kHz)	Line	Corr. (dB)
0.160000	---	34.75	66.00	31.25	1000.0	9.000	N	19.4
0.160000	48.23	---	79.00	30.77	1000.0	9.000	N	19.4
0.295000	---	36.13	66.00	29.87	1000.0	9.000	N	19.5
0.295000	45.09	---	79.00	33.91	1000.0	9.000	N	19.5
0.895000	---	22.74	60.00	37.26	1000.0	9.000	N	20.1
0.895000	28.01	---	73.00	44.99	1000.0	9.000	N	20.1
0.950000	---	22.69	60.00	37.31	1000.0	9.000	N	20.0
0.950000	27.77	---	73.00	45.23	1000.0	9.000	N	20.0
10.290000	---	19.19	60.00	40.81	1000.0	9.000	N	19.9
10.290000	24.29	---	73.00	48.71	1000.0	9.000	N	19.9
23.575000	---	14.06	60.00	45.94	1000.0	9.000	N	20.2
23.575000	19.87	---	73.00	53.13	1000.0	9.000	N	20.2

This report shall not be reproduced except in full, without the written approval of KES Co., Ltd.

The results shown in this test report refer only to the sample(s) tested unless otherwise stated.

The authenticity of the test report, contact shchoi@kes.co.kr



KES Co., Ltd.

3701, 40, Simin-daero 365beon-gil,
Dongan-gu, Anyang-si, Gyeonggi-do, 14057, Korea
Tel: +82-31-425-6200 / Fax: +82-31-424-0450
www.kes.co.kr

Report No.:

KES-EM-21T0597

Page (21) of (43)

■ PoE Mode

HOT LINE

Common Information

Test Description:

Model No.:

Phase:

Mode:

Operator Name:

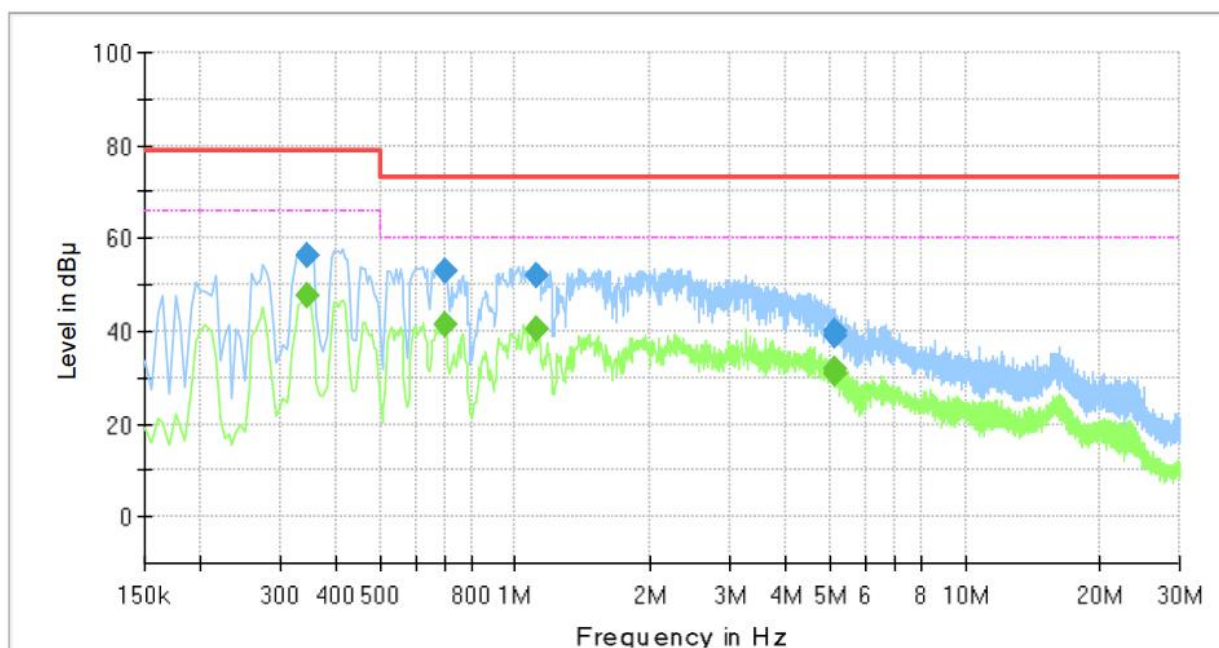
Conducted Emission

XNO-9083R

L1

PoE

KES



Final Result

Frequency (MHz)	QuasiPeak (dBμV)	CAverage (dBμV)	Limit (dBμV)	Margin (dB)	Meas. Time (ms)	Bandwidth (kHz)	Line	Corr. (dB)
0.345000	---	47.52	66.00	18.48	1000.0	9.000	L1	19.6
0.345000	56.14	---	79.00	22.86	1000.0	9.000	L1	19.6
0.695000	---	41.50	60.00	18.50	1000.0	9.000	L1	19.9
0.695000	52.73	---	73.00	20.27	1000.0	9.000	L1	19.9
1.110000	---	40.62	60.00	19.38	1000.0	9.000	L1	20.1
1.110000	51.89	---	73.00	21.11	1000.0	9.000	L1	20.1
5.135000	---	31.58	60.00	28.42	1000.0	9.000	L1	19.6
5.135000	40.10	---	73.00	32.90	1000.0	9.000	L1	19.6
5.140000	---	30.93	60.00	29.07	1000.0	9.000	L1	19.6
5.140000	39.01	---	73.00	33.99	1000.0	9.000	L1	19.6

This report shall not be reproduced except in full, without the written approval of KES Co., Ltd.

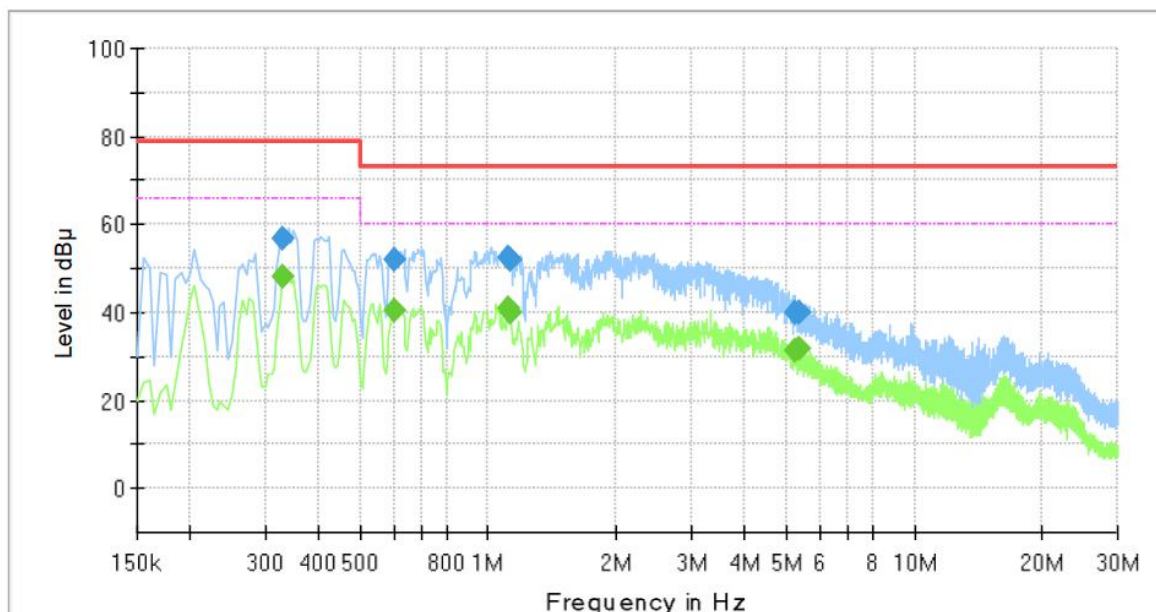
The results shown in this test report refer only to the sample(s) tested unless otherwise stated.

The authenticity of the test report, contact shchoi@kes.co.kr

NEUTRAL LINE

Common Information

Test Description:	Conducted Emission
Model No.:	XNO-9083R
Phase:	N
Mode:	PoE
Operator Name:	KES



Final_Result

Frequency (MHz)	QuasiPeak (dBμV)	CAverage (dBμV)	Limit (dBμV)	Margin (dB)	Meas. Time (ms)	Bandwidth (kHz)	Line	Corr. (dB)
0.330000	---	47.94	66.00	18.06	1000.0	9.000	N	19.5
0.330000	56.75	---	79.00	22.25	1000.0	9.000	N	19.5
0.605000	---	40.51	60.00	19.49	1000.0	9.000	N	19.8
0.605000	51.97	---	73.00	21.03	1000.0	9.000	N	19.8
1.110000	---	40.95	60.00	19.05	1000.0	9.000	N	20.1
1.110000	52.27	---	73.00	20.73	1000.0	9.000	N	20.1
1.125000	---	39.87	60.00	20.13	1000.0	9.000	N	20.1
1.125000	52.06	---	73.00	20.94	1000.0	9.000	N	20.1
5.240000	---	31.32	60.00	28.68	1000.0	9.000	N	19.6
5.240000	40.13	---	73.00	32.87	1000.0	9.000	N	19.6
5.340000	---	31.98	60.00	28.02	1000.0	9.000	N	19.6
5.340000	39.81	---	73.00	33.19	1000.0	9.000	N	19.6

◆ Calculation

QuasiPeak[dBuV] / CAverage [dBuV] = Reading Value[dBuV] + Corr. [dB]

QuasiPeak / CAverage : The Final Value

Reading Value : Not shown in the table.

Corr. : Correction values (LISN FACTOR + (Cable Loss + Pulse Limiter FACTOR))

This report shall not be reproduced except in full, without the written approval of KES Co., Ltd.

The results shown in this test report refer only to the sample(s) tested unless otherwise stated.

The authenticity of the test report, contact shchoi@kes.co.kr



KES Co., Ltd.

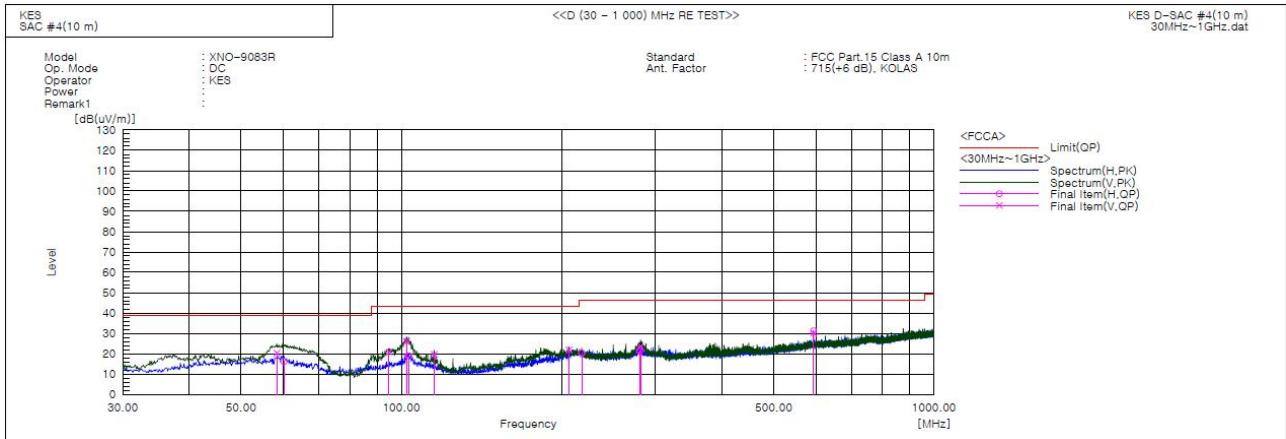
3701, 40, Simin-daero 365beon-gil,
Dongan-gu, Anyang-si, Gyeonggi-do, 14057, Korea
Tel: +82-31-425-6200 / Fax: +82-31-424-0450
www.kes.co.kr

Report No.:
KES-EM-21T0597
Page (23) of (43)

Radiated Electric Field Emissions(Below 1 GHz)

- 47 CFR Part 15, Subpart B

■ DC Mode



Final Result

No.	Frequency [MHz]	(P)	Reading QP [dB(uV)]	c.f [dB(1/m)]	Result QP [dB(uV/m)]	Limit QP [dB(uV/m)]	Margin QP [dB]	Height [cm]	Angle [deg]	Remark
1	58.373	V	42.0	-21.7	20.3	39.0	18.7	367.0	156.0	
2	60.191	H	38.1	-22.0	16.1	39.0	22.9	112.0	270.0	
3	94.869	V	44.4	-23.5	20.9	43.5	22.6	117.0	284.0	
4	102.265	V	48.6	-22.5	26.1	43.5	17.4	100.0	322.0	
5	103.235	H	41.4	-22.5	18.9	43.5	24.6	337.0	180.0	
6	115.239	V	42.7	-23.0	19.7	43.5	23.8	256.0	142.0	
7	206.540	V	42.5	-20.6	21.9	43.5	21.6	100.0	322.0	
8	218.180	H	40.6	-20.2	20.4	46.5	26.1	258.0	315.0	
9	280.018	H	39.8	-18.5	21.3	46.5	25.2	400.0	262.0	
10	281.473	V	41.9	-18.5	23.4	46.5	23.1	215.0	97.0	
11	594.055	V	38.8	-8.6	30.2	46.5	16.3	141.0	52.0	
12	594.155	H	39.9	-8.6	31.3	46.5	15.2	400.0	292.0	

This report shall not be reproduced except in full, without the written approval of KES Co., Ltd.
The results shown in this test report refer only to the sample(s) tested unless otherwise stated.
The authenticity of the test report, contact shchoi@kes.co.kr

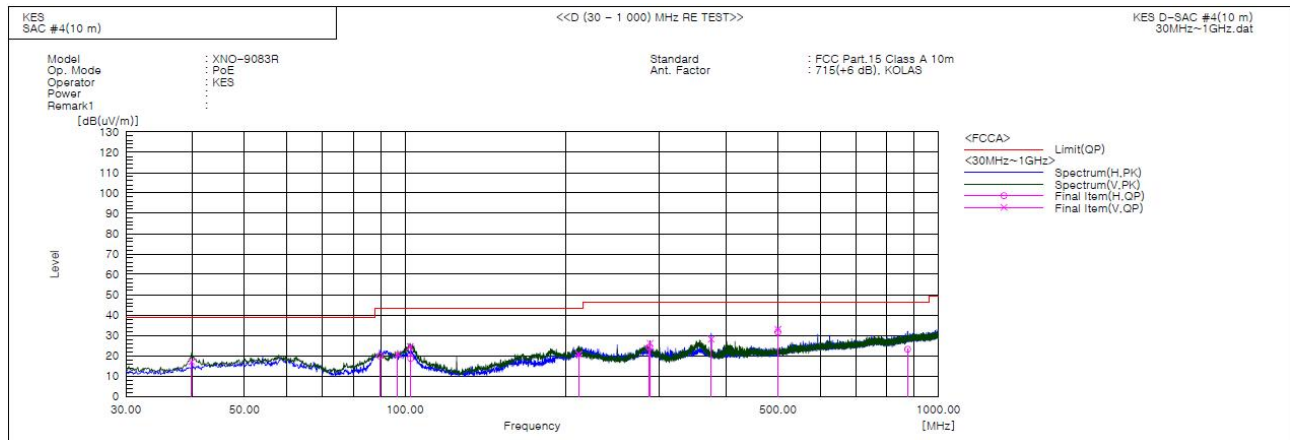


KES Co., Ltd.

3701, 40, Simin-daero 365beon-gil,
Dongan-gu, Anyang-si, Gyeonggi-do, 14057, Korea
Tel: +82-31-425-6200 / Fax: +82-31-424-0450
www.kes.co.kr

Report No.:
KES-EM-21T0597
Page (24) of (43)

PoE Mode



Final Result

No.	Frequency [MHz]	(P)	Reading QP [dB(uV)]	c.f [dB(1/m)]	Result QP [dB(uV/m)]	Limit QP [dB(uV/m)]	Margin QP [dB]	Height [cm]	Angle [deg]	Remark
1	39.821	V	39.7	-22.7	17.0	39.0	22.0	162.0	14.0	
2	89.655	H	44.2	-24.3	19.9	43.5	23.6	389.0	18.0	
3	96.930	V	43.8	-23.1	20.7	43.5	22.8	261.0	292.0	
4	102.265	V	47.0	-22.5	24.5	43.5	19.0	400.0	330.0	
5	102.508	H	41.2	-22.5	18.7	43.5	24.8	262.0	181.0	
6	211.633	V	41.2	-20.5	20.7	43.5	22.8	211.0	347.0	
7	287.120	H	42.6	-18.3	24.3	46.5	22.2	100.0	241.0	
8	288.020	V	44.4	-18.3	26.1	46.5	20.4	102.0	7.0	
9	374.956	V	42.9	-14.8	28.1	46.5	18.4	100.0	347.0	
10	499.965	V	44.6	-11.6	33.0	46.5	13.5	100.0	45.0	
11	499.972	H	43.2	-11.6	31.6	46.5	14.9	111.0	226.0	
12	875.113	H	27.5	-4.3	23.2	46.5	23.3	361.0	0.0	

This report shall not be reproduced except in full, without the written approval of KES Co., Ltd.
The results shown in this test report refer only to the sample(s) tested unless otherwise stated.
The authenticity of the test report, contact shchoi@kes.co.kr



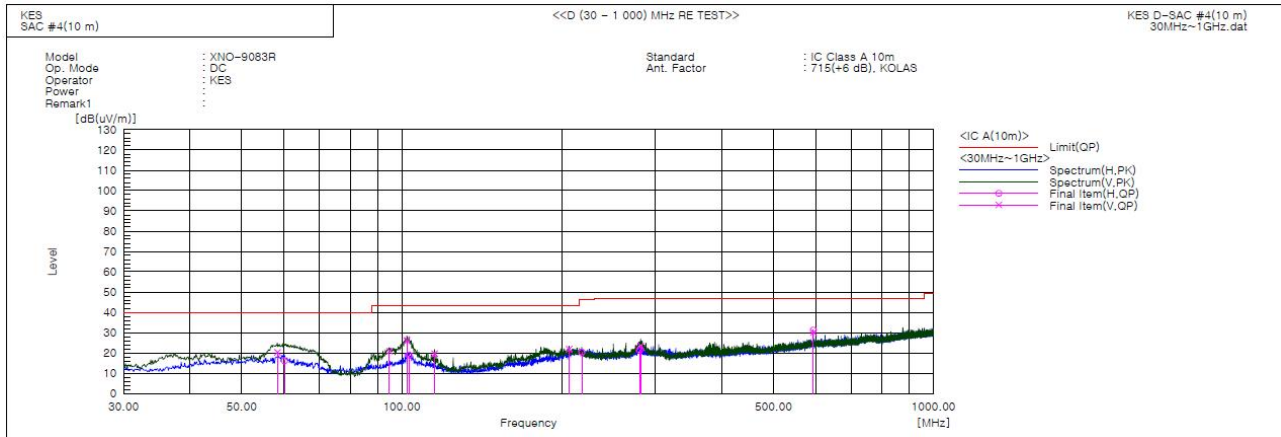
KES Co., Ltd.

3701, 40, Simin-daero 365beon-gil,
Dongan-gu, Anyang-si, Gyeonggi-do, 14057, Korea
Tel: +82-31-425-6200 / Fax: +82-31-424-0450
www.kes.co.kr

Report No.:
KES-EM-21T0597
Page (25) of (43)

- IC Regulation ICES-003 Issue 7

■ DC Mode



Final Result

No.	Frequency [MHz]	(P)	Reading QP [dB(uV)]	c.f [dB(1/m)]	Result QP [dB(uV/m)]	Limit QP [dB(uV/m)]	Margin QP [dB]	Height [cm]	Angle [deg]	Remark
1	58.373	V	42.0	-21.7	20.3	40.0	19.7	367.0	156.0	
2	60.191	H	38.1	-22.0	16.1	40.0	23.9	112.0	270.0	
3	94.869	V	44.4	-23.5	20.9	43.5	22.6	117.0	284.0	
4	102.265	V	48.6	-22.5	26.1	43.5	17.4	100.0	322.0	
5	103.235	H	41.4	-22.5	18.9	43.5	24.6	337.0	180.0	
6	115.239	V	42.7	-23.0	19.7	43.5	23.8	256.0	142.0	
7	206.540	V	42.5	-20.6	21.9	43.5	21.6	100.0	322.0	
8	218.180	H	40.6	-20.2	20.4	46.4	26.0	258.0	315.0	
9	280.018	H	39.8	-18.5	21.3	47.0	25.7	400.0	262.0	
10	281.473	V	41.9	-18.5	23.4	47.0	23.6	215.0	97.0	
11	594.055	V	38.8	-8.6	30.2	47.0	16.8	141.0	52.0	
12	594.155	H	39.9	-8.6	31.3	47.0	15.7	400.0	292.0	

This report shall not be reproduced except in full, without the written approval of KES Co., Ltd.
The results shown in this test report refer only to the sample(s) tested unless otherwise stated.
The authenticity of the test report, contact shchoi@kes.co.kr

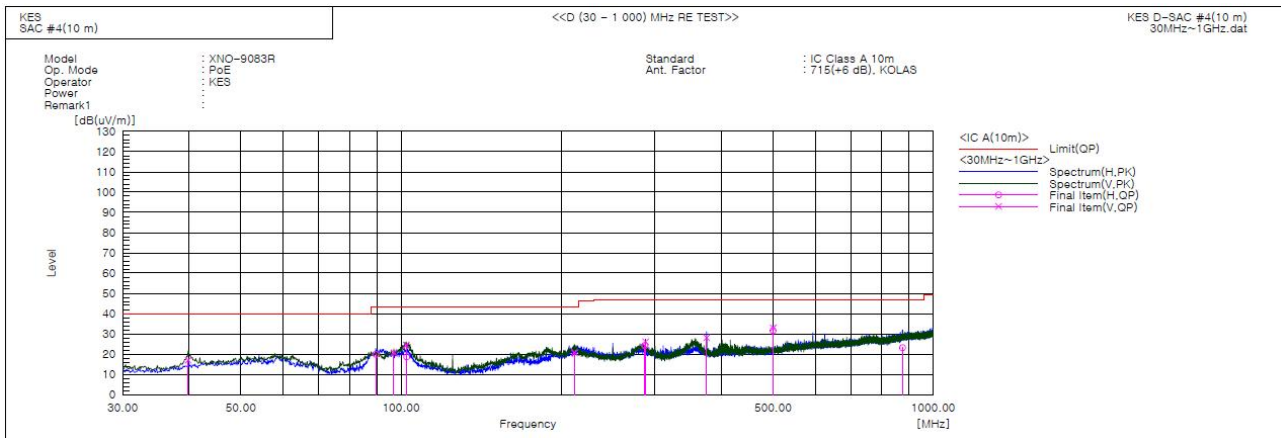


KES Co., Ltd.

3701, 40, Simin-daero 365beon-gil,
Dongan-gu, Anyang-si, Gyeonggi-do, 14057, Korea
Tel: +82-31-425-6200 / Fax: +82-31-424-0450
www.kes.co.kr

Report No.:
KES-EM-21T0597
Page (26) of (43)

PoE Mode



Final Result

No.	Frequency [MHz]	(P)	Reading QP [dB(uV)]	c.f [dB(1/m)]	Result QP [dB(uV/m)]	Limit QP [dB(uV/m)]	Margin QP [dB]	Height [cm]	Angle [deg]	Remark
1	39.821	V	39.7	-22.7	17.0	40.0	23.0	162.0	14.0	
2	89.655	H	44.2	-24.3	19.9	43.5	23.6	389.0	18.0	
3	96.930	V	43.8	-23.1	20.7	43.5	22.8	261.0	292.0	
4	102.265	V	47.0	-22.5	24.5	43.5	19.0	400.0	330.0	
5	102.508	H	41.2	-22.5	18.7	43.5	24.8	262.0	181.0	
6	211.633	V	41.2	-20.5	20.7	43.5	22.8	211.0	347.0	
7	287.120	H	42.6	-18.3	24.3	47.0	22.7	100.0	241.0	
8	288.020	V	44.4	-18.3	26.1	47.0	20.9	102.0	7.0	
9	374.956	V	42.9	-14.8	28.1	47.0	18.9	100.0	347.0	
10	499.965	V	44.6	-11.6	33.0	47.0	14.0	100.0	45.0	
11	499.972	H	43.2	-11.6	31.6	47.0	15.4	111.0	226.0	
12	875.113	H	27.5	-4.3	23.2	47.0	23.8	361.0	0.0	

◆ Calculation - SAC #4(10 m)

Result(QP) [dB(μV/m)] = (Reading(QP)[dB(μV)] + c.f[dB(1/m)])

Margin(QP)[dB] = Limit[dB(μV/m)] - Result(QP) [dB(μV/m)]

Reading(QP) : Reading value, Result(QP) : Reading value + Factor value

Limit(QP) : Limit value, c.f : (ANT Factor + Cable Loss - Preamp Factor), Margin: Margin value



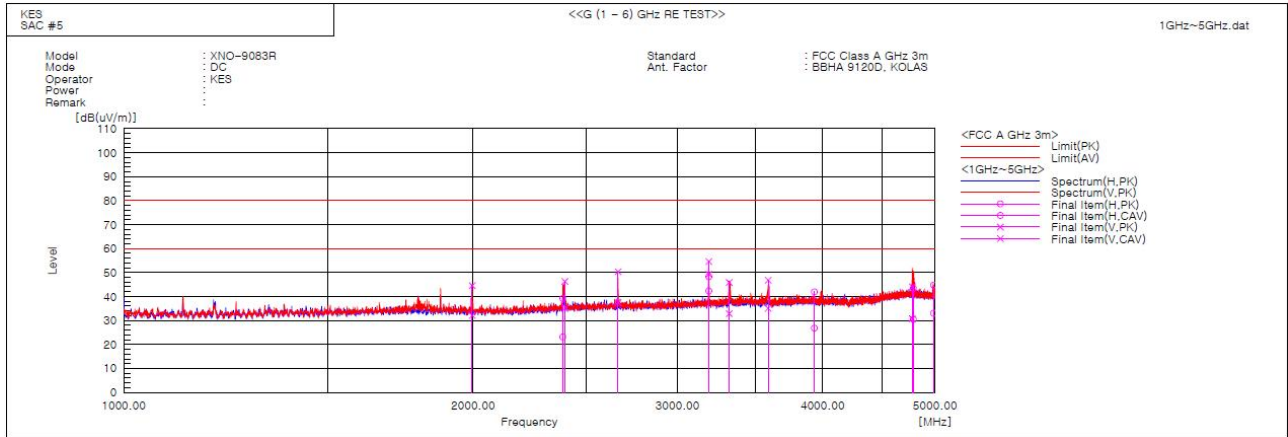
KES Co., Ltd.

3701, 40, Simin-daero 365beon-gil,
Dongan-gu, Anyang-si, Gyeonggi-do, 14057, Korea
Tel: +82-31-425-6200 / Fax: +82-31-424-0450
www.kes.co.kr

Report No.:
KES-EM-21T0597
Page (27) of (43)

Radiated Electric Field Emissions(Above 1 GHz)

DC Mode



Final Result

No.	Frequency [MHz]	(P)	Reading PK [dB(uV)]	Reading CAV [dB(uV)]	c.f [dB(1/m)]	Result PK [dB(uV/m)]	Result CAV [dB(uV/m)]	Limit PK [dB(uV/m)]	Limit AV [dB(uV/m)]	Margin PK [dB]	Margin CAV [dB]	Height [cm]	Angle [deg]	Remark
1	1995.625	V	48.4	35.9	-3.8	44.6	32.1	80.0	60.0	35.4	27.9	106.0	332.5	
2	2388.750	H	41.9	25.9	-2.7	39.2	23.2	80.0	60.0	40.8	36.8	337.0	166.1	
3	2398.750	V	49.0	37.8	-2.7	46.3	35.1	80.0	60.0	33.7	24.9	130.0	308.7	
4	2665.625	V	51.9	39.2	-1.6	50.3	37.6	80.0	60.0	29.7	22.4	278.0	92.8	
5	3191.875	V	54.8	49.5	-0.2	54.6	49.3	80.0	60.0	25.4	10.7	142.0	23.5	
6	3191.875	H	48.5	42.5	-0.2	48.3	42.3	80.0	60.0	31.7	17.7	225.0	180.1	
7	3323.125	V	46.0	33.0	-0.1	45.9	32.9	80.0	60.0	34.1	27.1	238.0	197.1	
8	3590.625	V	46.8	35.1	0.0	46.8	35.1	80.0	60.0	33.2	24.9	400.0	234.2	
9	3936.250	H	40.6	25.5	1.3	41.9	26.8	80.0	60.0	38.1	33.2	107.0	103.7	
10	4779.375	V	39.3	26.0	4.8	44.1	30.8	80.0	60.0	35.9	29.2	366.0	168.2	
11	4790.000	H	38.6	25.6	4.9	43.5	30.5	80.0	60.0	36.5	29.5	100.0	214.3	
12	4984.375	H	39.1	27.4	5.7	44.8	33.1	80.0	60.0	35.2	26.9	229.0	232.1	

This report shall not be reproduced except in full, without the written approval of KES Co., Ltd.
The results shown in this test report refer only to the sample(s) tested unless otherwise stated.
The authenticity of the test report, contact shchoi@kes.co.kr

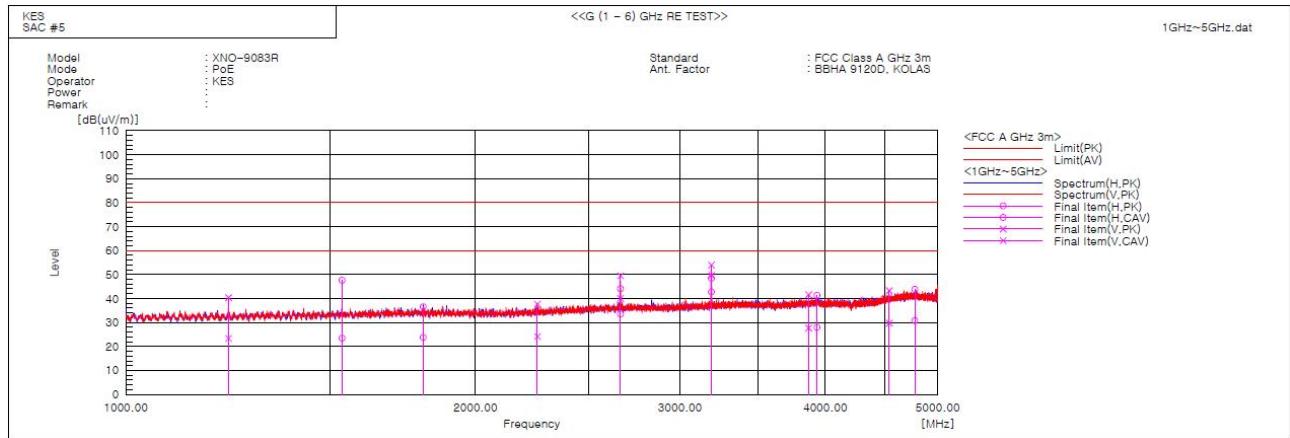


KES Co., Ltd.

3701, 40, Simin-daero 365beon-gil,
Dongan-gu, Anyang-si, Gyeonggi-do, 14057, Korea
Tel: +82-31-425-6200 / Fax: +82-31-424-0450
www.kes.co.kr

Report No.:
KES-EM-21T0597
Page (28) of (43)

PoE Mode



Final Result

No.	Frequency [MHz]	(P)	Reading PK [dB(uV)]	Reading CAV [dB(uV)]	c.f [dB(1/m)]	Result PK [dB(uV/m)]	Result CAV [dB(uV/m)]	Limit PK [dB(uV/m)]	Limit AV [dB(uV/m)]	Margin PK [dB]	Margin CAV [dB]	Height [cm]	Angle [deg]	Remark
1	1225.625	V	47.4	30.4	-7.0	40.4	23.4	80.0	60.0	39.6	36.6	100.0	18.9	
2	1535.000	H	53.2	29.1	-5.6	47.6	23.5	80.0	60.0	32.4	36.5	134.0	1.7	
3	1803.125	H	41.1	28.3	-4.5	36.6	23.8	80.0	60.0	43.4	36.2	117.0	354.5	
4	2261.250	V	40.9	27.4	-3.2	37.7	24.2	80.0	60.0	42.3	35.8	142.0	106.1	
5	2665.625	H	45.7	35.1	-1.6	44.1	33.5	80.0	60.0	35.9	26.5	255.0	36.4	
6	2665.625	V	51.1	41.7	-1.6	49.5	40.1	80.0	60.0	30.5	19.9	189.0	108.2	
7	3191.875	H	48.7	43.0	-0.2	48.5	42.8	80.0	60.0	31.5	17.2	336.0	219.8	
8	3191.875	V	54.2	49.9	-0.2	54.0	49.7	80.0	60.0	26.0	10.3	105.0	29.6	
9	3870.625	V	40.5	26.6	1.1	41.6	27.7	80.0	60.0	38.4	32.3	208.0	53.6	
10	3935.000	H	40.0	26.7	1.3	41.3	28.0	80.0	60.0	38.7	32.0	379.0	354.6	
11	4541.875	V	39.3	25.8	4.0	43.3	29.8	80.0	60.0	36.7	30.2	400.0	110.9	
12	4777.500	H	39.1	26.0	4.8	43.9	30.8	80.0	60.0	36.1	29.2	377.0	218.4	

Calculation

Result(PK/CAV) [dB(uV/m)] = (Reading(PK/CAV)[dB(uV)] + c.f[dB(1/m)])

Margin(PK/CAV)[dB] = Limit[dB(uV/m)] - Result(PK/CAV) [dB(uV/m)]

Reading(PK/CAV) : Reading value, Result(PK/CAV) : Reading value + Factor value

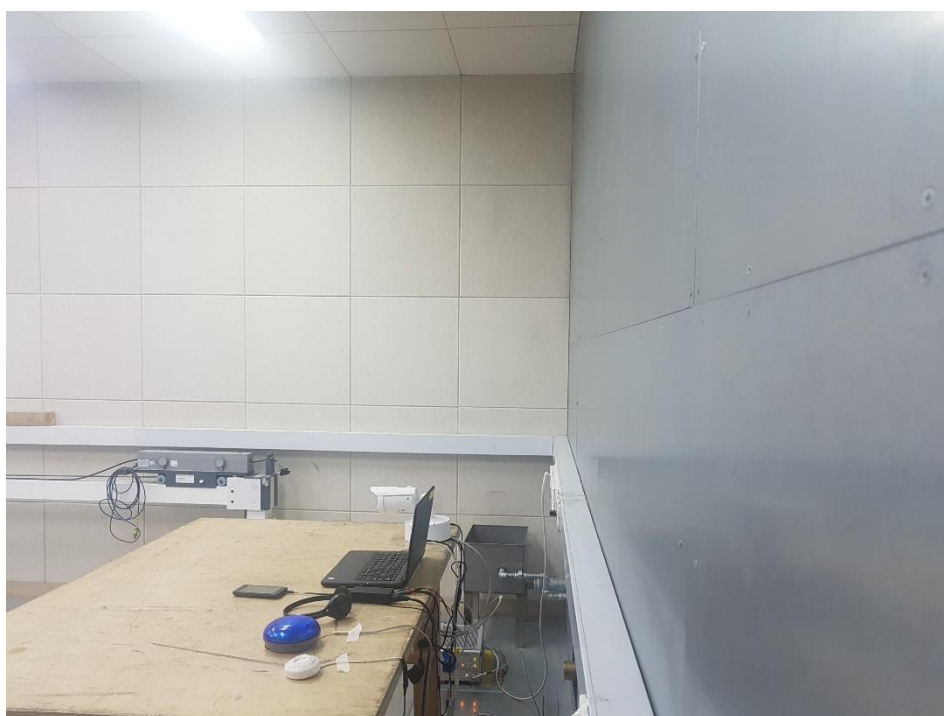
Limit(QP) : Limit value, c.f : (ANT Factor + Cable Loss - Preamp Factor), Margin: Margin value

This report shall not be reproduced except in full, without the written approval of KES Co., Ltd.
The results shown in this test report refer only to the sample(s) tested unless otherwise stated.
The authenticity of the test report, contact shchoi@kes.co.kr

Test Setup Photos and Configuration

Conducted Emissions at Mains Power Ports

■ DC Mode



This report shall not be reproduced except in full, without the written approval of KES Co., Ltd.
The results shown in this test report refer only to the sample(s) tested unless otherwise stated.
The authenticity of the test report, contact shchoi@kes.co.kr

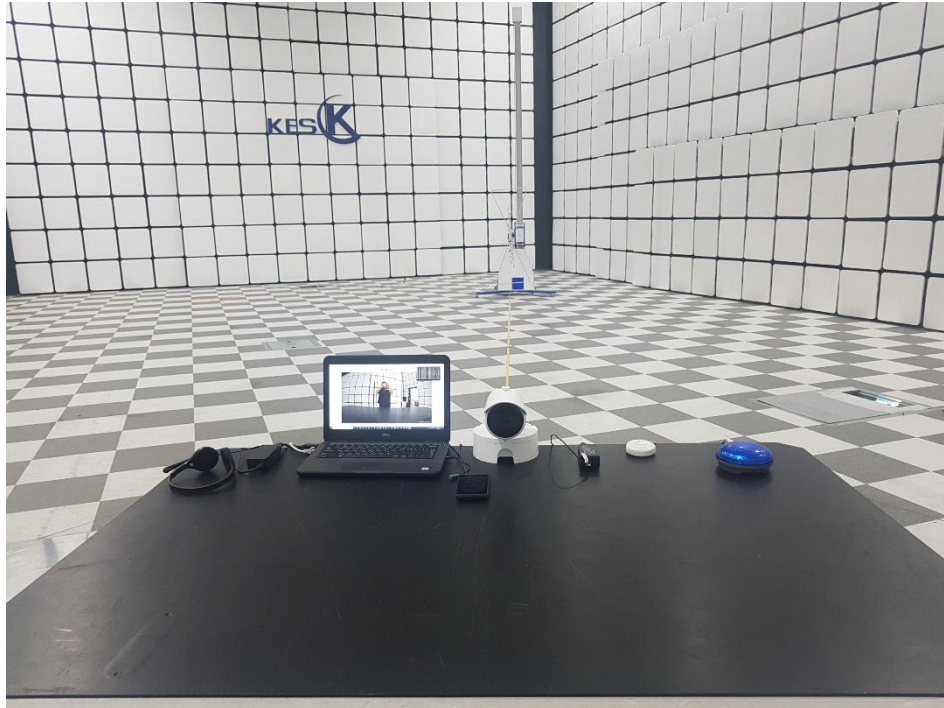
■ PoE Mode



This report shall not be reproduced except in full, without the written approval of KES Co., Ltd.
The results shown in this test report refer only to the sample(s) tested unless otherwise stated.
The authenticity of the test report, contact shchoi@kes.co.kr

Radiated Electric Field Emissions(Below 1 GHz)

■ DC Mode



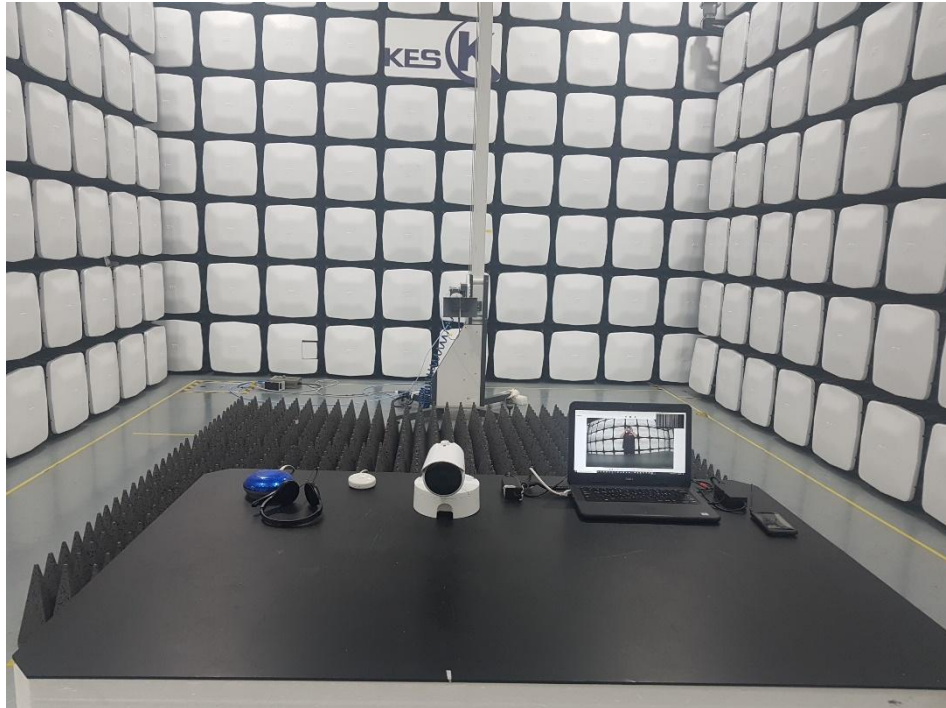
This report shall not be reproduced except in full, without the written approval of KES Co., Ltd.
The results shown in this test report refer only to the sample(s) tested unless otherwise stated.
The authenticity of the test report, contact shchoi@kes.co.kr

■ PoE Mode

This report shall not be reproduced except in full, without the written approval of KES Co., Ltd.
The results shown in this test report refer only to the sample(s) tested unless otherwise stated.
The authenticity of the test report, contact shchoi@kes.co.kr

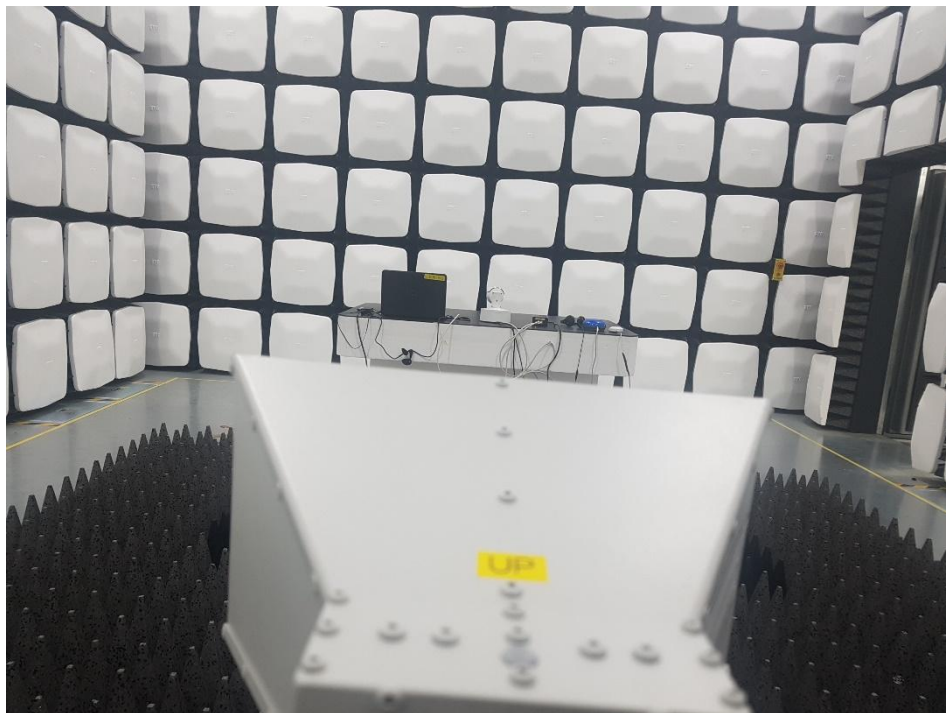
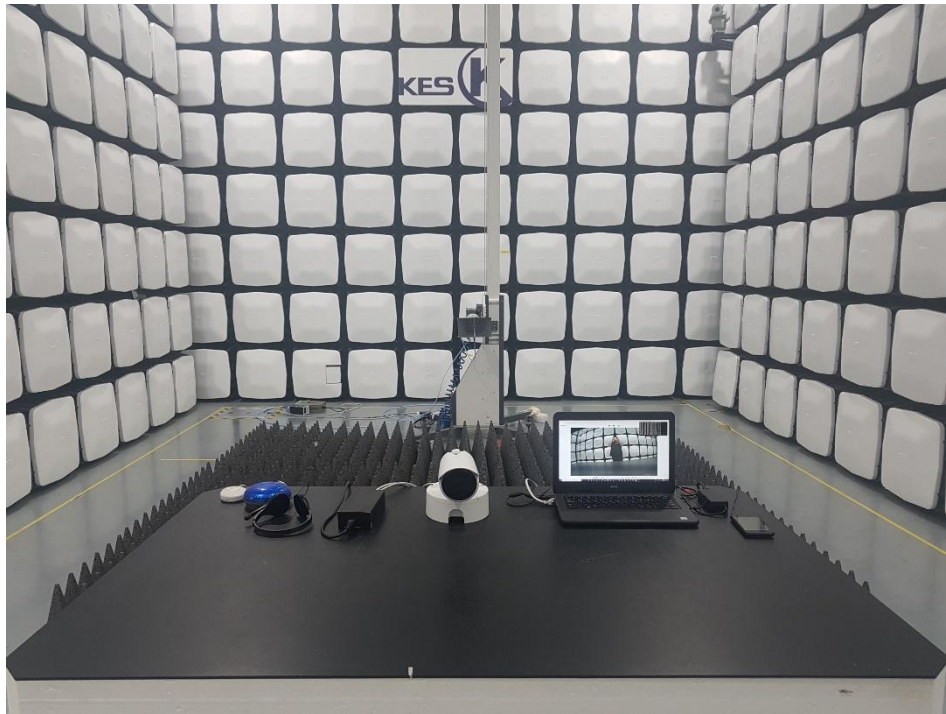
Radiated Electric Field Emissions(Above 1 GHz)

■ DC Mode



This report shall not be reproduced except in full, without the written approval of KES Co., Ltd.
The results shown in this test report refer only to the sample(s) tested unless otherwise stated.
The authenticity of the test report, contact shchoi@kes.co.kr

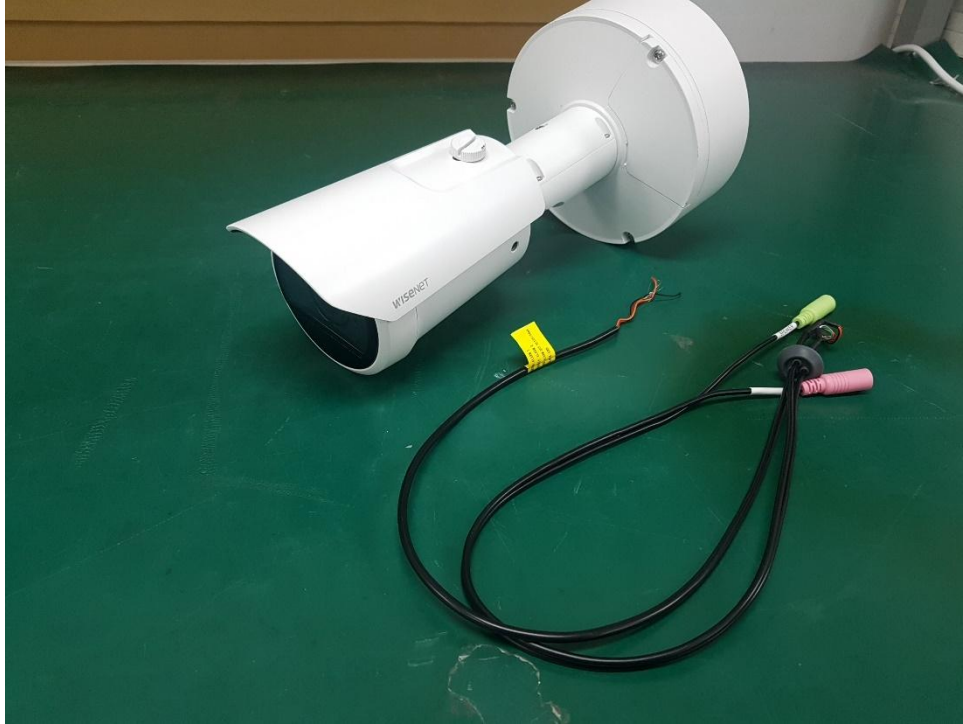
■ PoE Mode



This report shall not be reproduced except in full, without the written approval of KES Co., Ltd.
The results shown in this test report refer only to the sample(s) tested unless otherwise stated.
The authenticity of the test report, contact shchoi@kes.co.kr

EUT External Photographs

(Top)



(Bottom)



This report shall not be reproduced except in full, without the written approval of KES Co., Ltd.
The results shown in this test report refer only to the sample(s) tested unless otherwise stated.
The authenticity of the test report, contact shchoi@kes.co.kr

EUT Internal Photographs

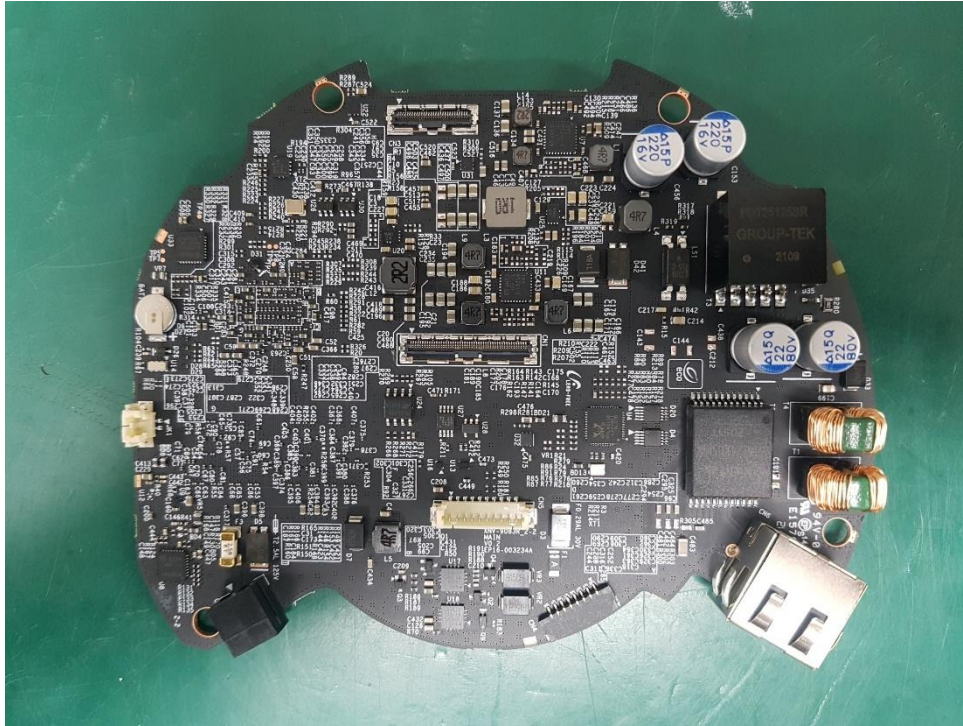
(Internal View)



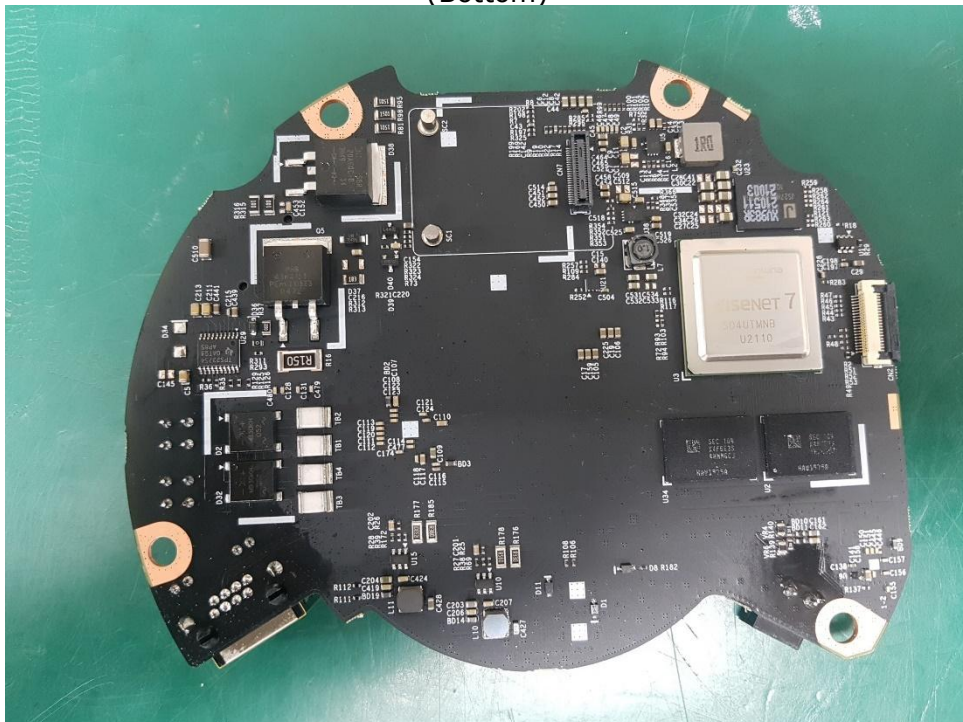
This report shall not be reproduced except in full, without the written approval of KES Co., Ltd.
The results shown in this test report refer only to the sample(s) tested unless otherwise stated.
The authenticity of the test report, contact shchoi@kes.co.kr

EUT Internal View – Board 1

(Top)



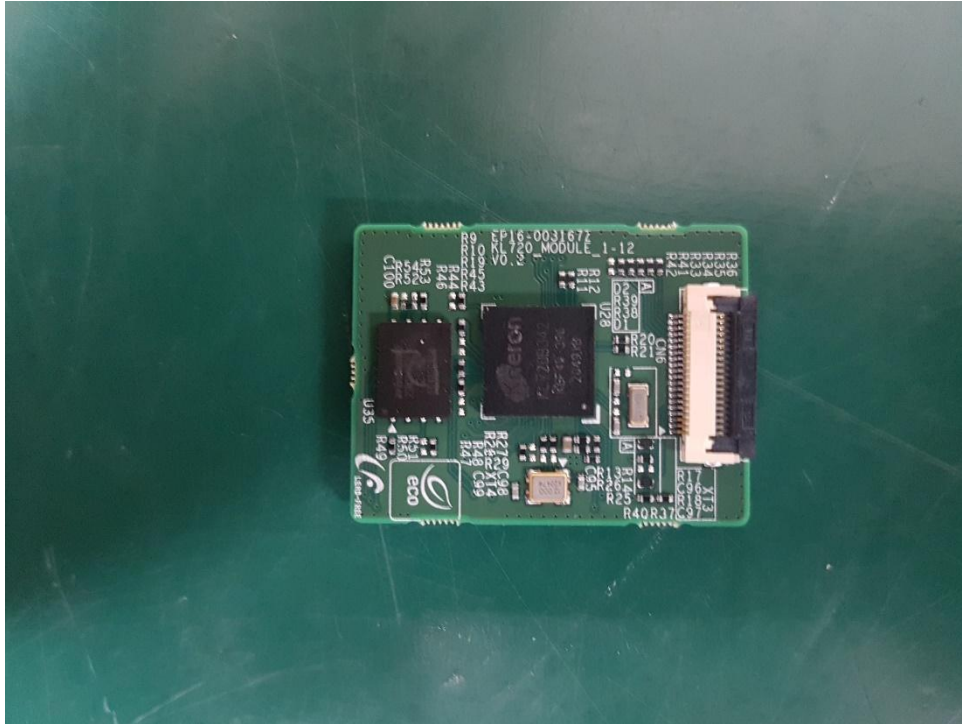
(Bottom)



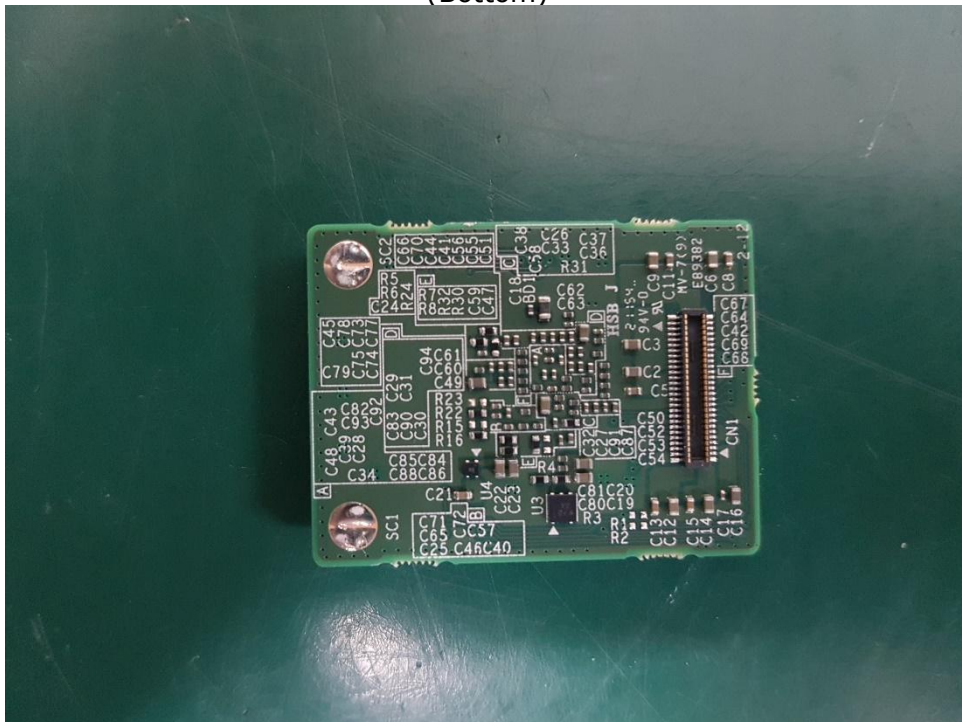
This report shall not be reproduced except in full, without the written approval of KES Co., Ltd.
 The results shown in this test report refer only to the sample(s) tested unless otherwise stated.
 The authenticity of the test report, contact shchoi@kes.co.kr

EUT Internal View – Board 2

(Top)



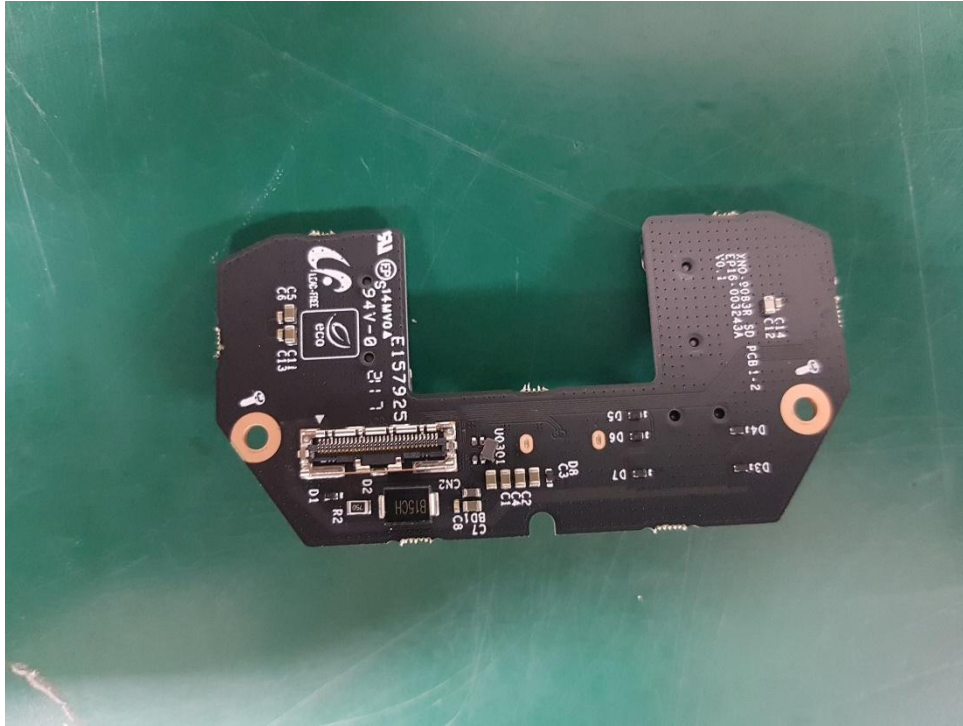
(Bottom)



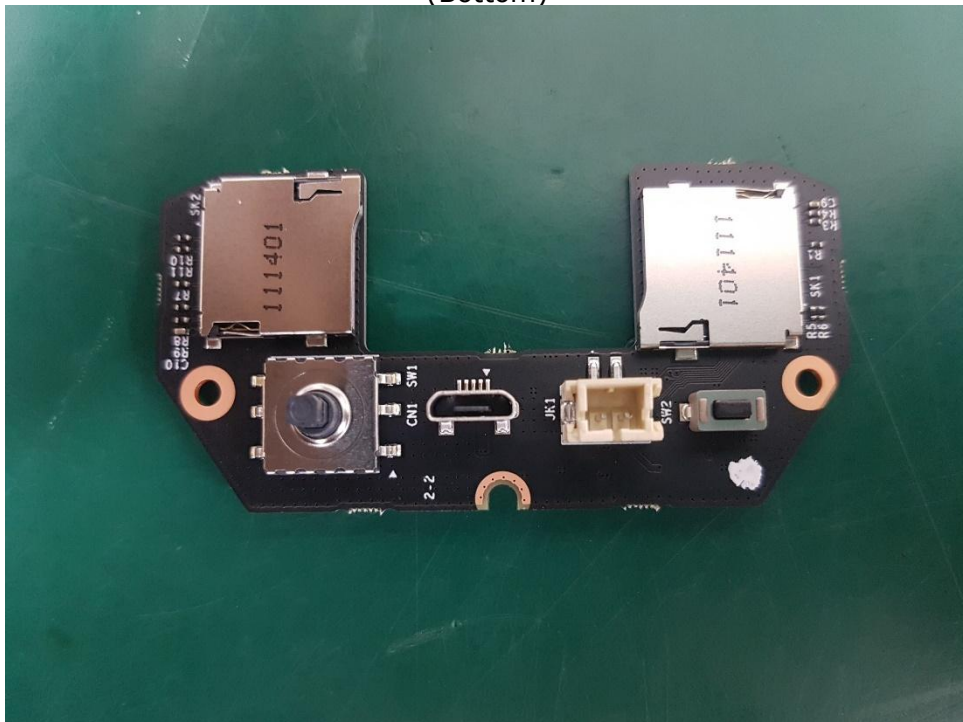
This report shall not be reproduced except in full, without the written approval of KES Co., Ltd.
 The results shown in this test report refer only to the sample(s) tested unless otherwise stated.
 The authenticity of the test report, contact shchoi@kes.co.kr

EUT Internal View – Board 3

(Top)



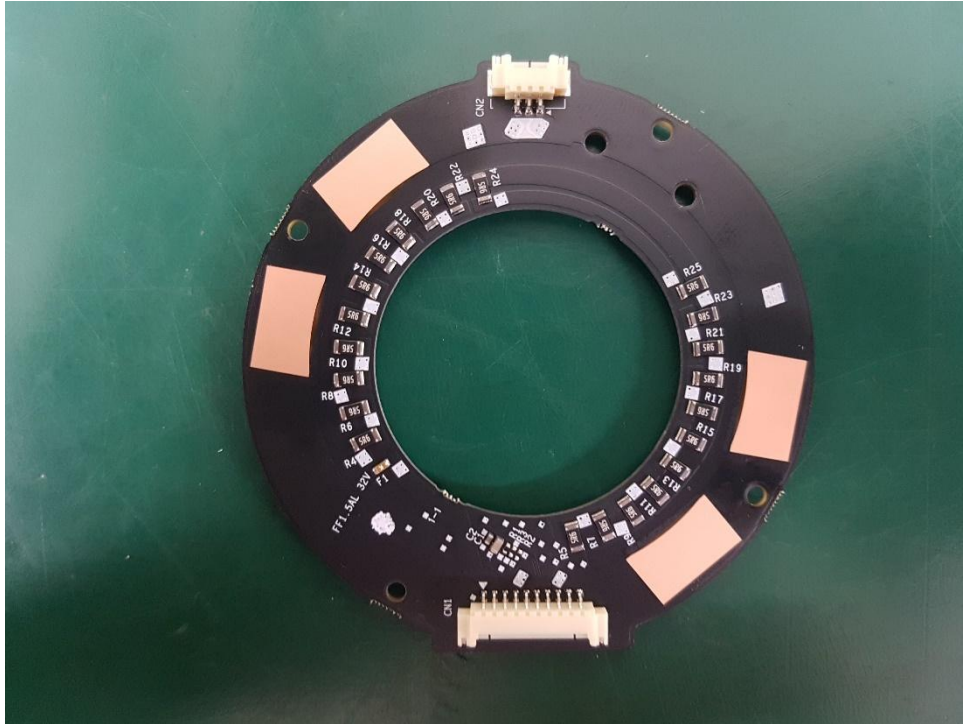
(Bottom)



This report shall not be reproduced except in full, without the written approval of KES Co., Ltd.
 The results shown in this test report refer only to the sample(s) tested unless otherwise stated.
 The authenticity of the test report, contact shchoi@kes.co.kr

EUT Internal View – Board 4

(Top)



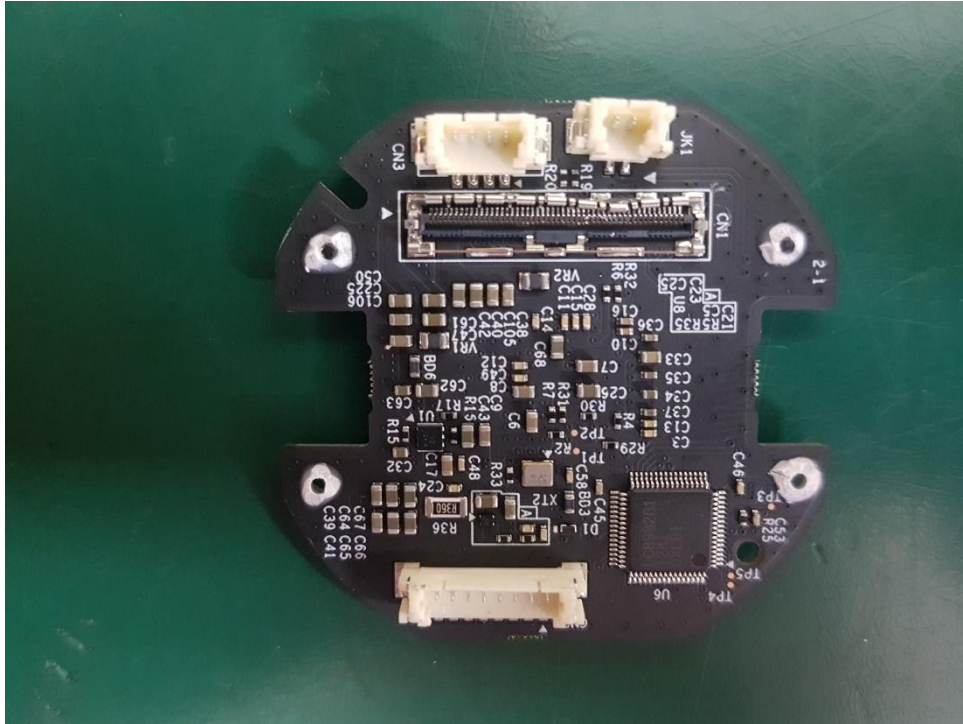
(Bottom)



This report shall not be reproduced except in full, without the written approval of KES Co., Ltd.
 The results shown in this test report refer only to the sample(s) tested unless otherwise stated.
 The authenticity of the test report, contact shchoi@kes.co.kr

EUT Internal View – Board 5

(Top)

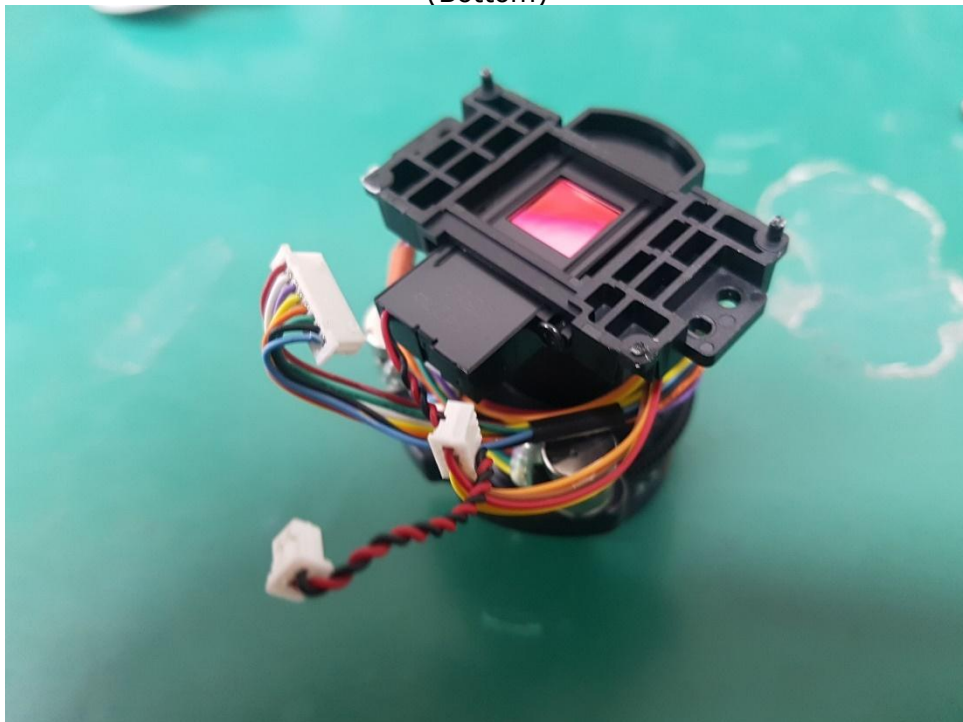


EUT Internal View – Lens

(Top)

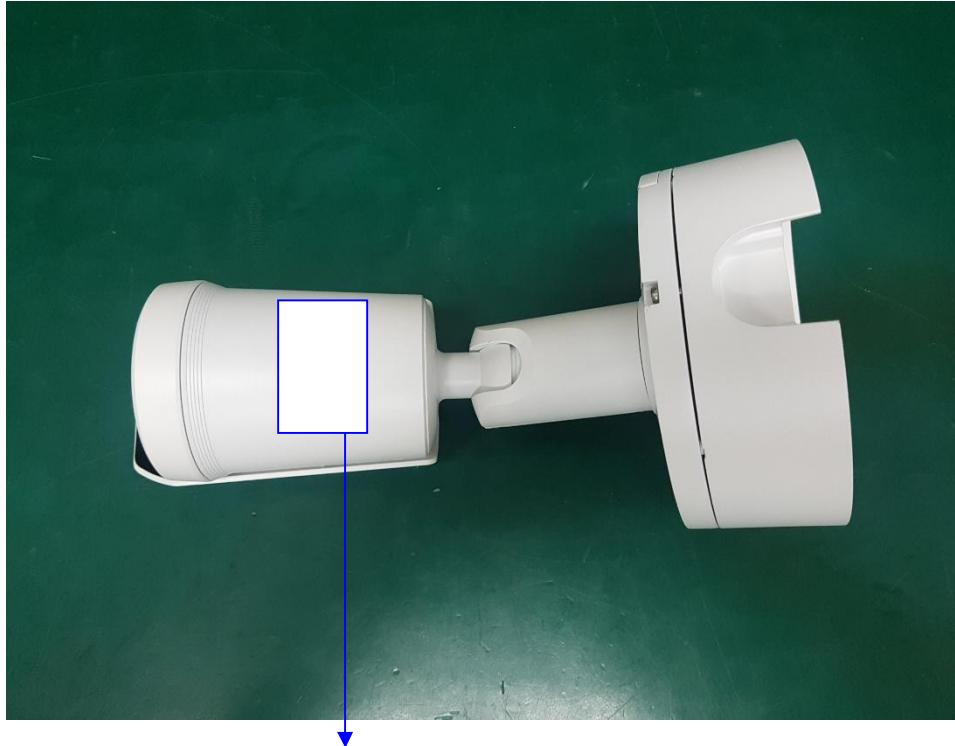


(Bottom)



This report shall not be reproduced except in full, without the written approval of KES Co., Ltd.
The results shown in this test report refer only to the sample(s) tested unless otherwise stated.
The authenticity of the test report, contact shchoi@kes.co.kr

Label Photographs



CAN ICES-3(A) / NMB-3(A)

This device complies with part 15 of the FCC Rules. Operation is subject to the following two conditions: (1) This device may not cause harmful interference, and (2) this device must accept any interference received, including interference that may cause undesired operation

This device complies with Industry Canada license-exempt RSS standard(s). Operation is subject to the following two conditions: (1) this device may not cause interference, and (2) this device must accept any interference, including interference that may cause undesired operation of the device.

Le présent appareil est conforme aux CNR d'Industrie Canada applicables aux appareils radio exempts de licence. L'exploitation est autorisée aux deux conditions suivantes :

(1) l'appareil ne doit pas produire de brouillage, et (2) l'utilisateur de l'appareil doit accepter tout brouillage radioélectrique subi, même si le brouillage est susceptible d'en compromettre le fonctionnement.