

# 移动视频录像机

移动视频录像机

SRM-872

## 移动视频录像机 用户手册

---

### 版权所有

©2015 Hanwha Techwin Co., Ltd. 保留所有权利。

### 商标

本文件中的每个商标均经过注册。本产品的名称以及本手册中提到的其他商标均为各自公司的注册商标。

### 限制

保留本文件的版权。未经正式授权，在任何情况下均不得复制、传阅或更改本文件或其任何部分。

### 免责声明

Hanwha Techwin做的最好，以验证本文档中内容的完整性和正确性，但没有正式的担保的提供。

使用本文档及所产生的结果应是完全依靠用户自己的责任。Hanwha Techwin保留更改本文档的内容，恕不另行通知。

- ✧ 设计和规格若有变更，恕不另行通知。
- ✧ 最初的管理员ID为“admin”，密码应在第一次登录时设置。  
为您的无线网络，如果你使用的产品与无线路由器设置密码。暂时不要用密码保护或使用默认无线路由器密码可能您的视频数据暴露给潜在的威胁。  
请改变你的密码每三个月以安全地保护个人信息，并防止信息被盗的损坏。  
我想请注意，这是对安全性和所造成的管理不善密码的任何其他问题，用户的责任。

# 概述

## 重要安全说明

---

在使用本设备之前应认真阅读操作说明。遵照下面列出的所有安全说明。将本手册放到便利位置以供未来参考。

- 1) 阅读这些说明。
- 2) 保留这些说明。
- 3) 注意所有警告。
- 4) 遵照所有说明。
- 5) 切勿在水附近使用本设备。
- 6) 只用干布清洁。
- 7) 切勿堵塞任何通风口，遵照制造商说明进行安装。
- 8) 切勿在任何热源附近安装，如散热器、集热器、炉子或其他产热装置（包括放大器）。
- 9) 切勿使极化或接地类型插头的安全设计失效。极化插头有两个插片，其中一个比另一个宽。接地类型的插头有两个插片和一个接地插片。较宽的插片或第三个插片用于安全目的。如果所提供的插头与您的插座不匹配，请找电工更换过时插座。
- 10) 避免电源线被踩踏或受到挤压，尤其是插头或便捷插座以及电源线通入设备机身的位置。
- 11) 只使用制造商指定的附件/配件。
- 12) 只使用制造商指定的或者随本设备销售的推车、支架、三脚架、托架或桌台。使用推车时，在移动推车/设备组合体时应小心，避免倾翻造成人身伤害。
- 13) 在雷电天气或长时间不使用时，从插座拔出本设备的电源插头。
- 14) 所有维修专业维修人员。当设备被损坏以任何方式，如电源线或插头损坏，液体溅入或物体落入设备需要维修，设备已被雨淋或受潮，无法正常工作，或已被删除。



## 标准认证

---



本设备经过测试，确认符合 FCC 规定。这些限制的目的是针对本设备在商业环境中工作时的有害干扰提供合理保护。本设备产生、使用而且会辐射无线电频率能量，如果不遵照说明手册安装和使用，可能会对无线电通信造成有害干扰。在居住区使用本设备可能会导致有害干扰，在此情况下用户应自费纠正该干扰。

## 使用前准备

---

本手册提供了使用该产品所需的业务信息，并包含有关每个组成部分的描述，它的功能以及菜单和网络设置。

请记住以下通知：

- Hanwha Techwin 保留对本手册的版权。
- 本手册离不开 Hanwha Techwin 事先书面许可，复制。
- 我们不完全或以产品 curred 您使用非标产品或违反本手册中的指示的任何损失承担任何责任。
- 在此之前打开的情况下，请先咨询合格的技术人员，总是从设备上拔下电源。
- 在添加的硬盘驱动器或外部存储（USB 存储器，USB 硬盘等），检查它是否符合该产品。有关兼容性列表，请联系经销商。
- 使用工业用’的 Micro SD’（不含税）。它保存在一个较低的温度对 SD 数据和更改硬盘当硬盘驱动器达到工作温度。
- 均匀地将 GPS 天线出车辆指向天空。如果天线的安装是正确的，它可以接收不稳定的数据。普通 GPS 的误差距离是 16 米停止时，30M，同时移动。

## 警告

---

### 小心

- 关闭电源延长电源线前安装，使用AWG（美国线规）18或更厚。
- 当安装一个GPS天线，将其连接到车外平坦的地方。GPS天线必须指向天空。要接收不正确的安装可能导致不稳定的数据。普通GPS的误差距离是16米停止时，30M，同时移动。当安装一个GPS天线到车辆，购买和使用一个’有源天线（2.85V）’。
- 始终车辆使用的电池。保险丝连接到“始终在线”的电源时可能断裂。
- 电池生命周期可如果电池状态不佳缩短。
- 可能有爆炸的危险，如果更换的电池类型不正确。处理废旧电池根据当地的环保法规。

## 关闭系统

关闭电源，而该产品在操作中，或在服用不当行为可能导致损坏或故障的硬盘驱动器或产品。

要切断电源的情况下系统故障，拔掉电源线。

您可能需要安装UPS系统，以防止因任何意外的权力热门网页的伤害。（任何有关UPS疑问，请咨询我们的UPS零售商。）

## 工作温度

该产品的保证工作温度范围为-25° C～50° C（-13° F～122° F）。

如果您未立即存储低于保证温度长时间后，该产品可能无法正常工作。

使用前已经存储了很长时间在低温下的设备，允许产品站在

室温下的周期。

特别是对于内置HDD中的产物，其保证的温度范围为0°C～60°C（32° F～140° F）。

同样地，将硬盘驱动器可能无法工作低于保证温度。

## 以太网端口

该设备是在室内使用，所有的通信布线只限于室内使用。

## 安全预防措施

最初的管理员ID为“admin”，密码应在第一次登录时设置。设置difused本产品无线路由器密码。没有保护使用密码或使用默认无线路由器密码可能您的视频数据暴露在潜在的威胁。请更改您的密码每三个月停止protect个人信息，防止因信息英尺的损害。

请，请注意，这是为安全而引起的密码管理不善的任何其他问题用户的责任。

# 目录

p3	概述
8	产品特点
9	包装内物品清单
10	前后视图及细节
12	I/O 盒
13	控制盒
p14	安装
14	拆卸托架
14	安装产品
15	安装 IO 及控制盒
16	车上安装
p17	监视
	启动/停止系统
17	登录
17	关闭系统
18	现场监控屏幕
19	OSD 图标
19	现场屏幕上的上下文菜单
20	现场视图分屏
20	单频道现场视图
20	备份
21	现场监控
21	录制状态
21	显示所述位置信息
22	紧急录制
22	转到搜索模式
22	进入设置菜单
p23	系统设置
23	系统信息
26	用户设置
28	设备
32	配置文件设置
33	音频
34	警报
35	显示

	37	数位广告
	38	录制设置
	40	网络
	45	事件
<b>p47</b>		播放（搜索）
<b>p49</b>		备份
<b>p50</b>		Web 客户端访问
<b>p55</b>		数位广告 Maker
<b>p56</b>		附录
	56	系统规格
	58	I/O 盒安装
	59	连接器针脚图
	62	常见问题解答

## 产品特点

---

- 嵌入式 Linux 系统，终极可靠。
- 专用数据库结构，稳定性更好。
- CMS（中央监控系统）支持。
- 在 NVR、CMS 和 Web 查看器上使用相同的 UI。
- 提供 Web 监控、搜索和设置。
- 内置媒体播放器，用于备份数据播放。
- 提供鼠标和外部存储设备的 USB 支持。
- 硬盘/固态硬盘和 Micro SD 支持。
- 移动设备支持（iPhone 和 Android）。
- 数字缩放。
- 尺寸紧凑，可安装到车辆。
- 备份存储支持，如 USB 记忆棒。
- 支持 GPS/ 格洛纳斯卫星导航系统。
- 工业标准的持久温度限制。
- 内置电源支持（PoE）。
- 振动和冲击测试中采用军品级测试标准。
- I/O 盒（传感器、警报、重力传感器、状态 LED）。
- 通过 I/O 盒中的重力传感器进行事件检测。
- 控制盒（IR 输入、紧急按钮、状态 LED、音频输出）。
- 支持的相机：SNV-6012M，SNV-5010，SNF-7010，SNF-8010



## 包装内物品清单

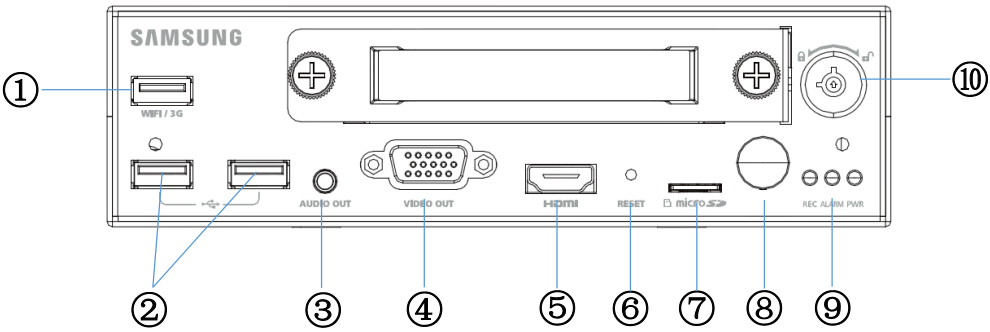
产品包装盒中包括以下物品：

		
NVR 主机	I/O 盒	控制盒
		
电源线（每机 1 根）	RS232 连接线缆（每机 2 根）	RJ45 UTP 线缆（每机 2 根）
		
GPS 天线	遥控器和电池	CD（用户手册， 数位广告 Maker）
		
快速入门指南	组固定螺钉和钥匙	后盖

- 由于制造差异，部件颜色和设计可能存在不同。

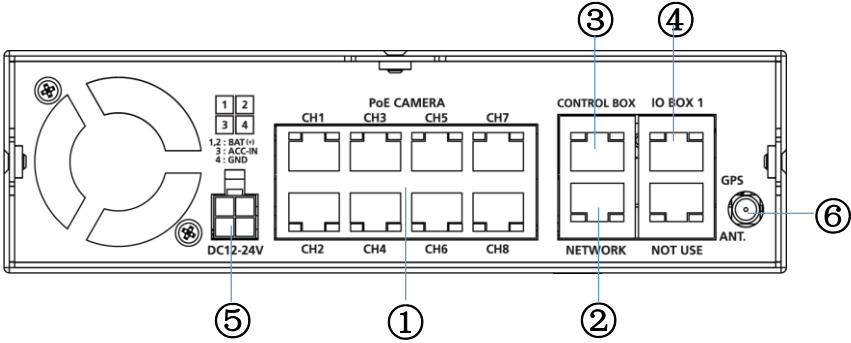
# 前后视图及细节

前面



名称		描述
1	WiFi/3G USB	使用 WiFi 或 3G 通信（可选）时连接 USB 模块
2	USB 端口	用于鼠标连接或外部存储设备
3	音频输出	声音线路输出
4	视频输出	连接 VGA 监视器以显示画面
5	HDMI 输出	连接 HDMI 监视器
6	重置开关	重新启动系统时使用
7	Micro SD 插槽	插入 Micro SD 以用于录制
8	IR 传感器	接收来自远程控制器的信号
9	LED	显示 NVR 状态
10	门锁钥匙	锁定 HDD 设备。必须锁定该设备才能启动系统。

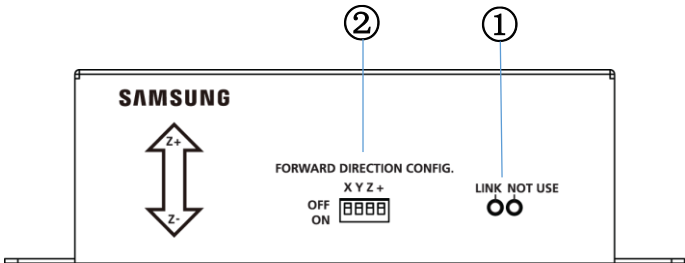
后面



名称		描述
1	摄像机以太网供电	连接 IP 摄像机。使用 PoE IP 摄像机时，系统支持通过以太网供电
2	网络	连接用于 CMS 和 Web 视图的网络线缆
3	控制盒	连接到控制盒
4	I/O 盒 1	连接到 I/O 盒
5	电源	连接来自车辆的电源
6	GPS	连接 GPS 天线（SMA 型）

# I/O 盒

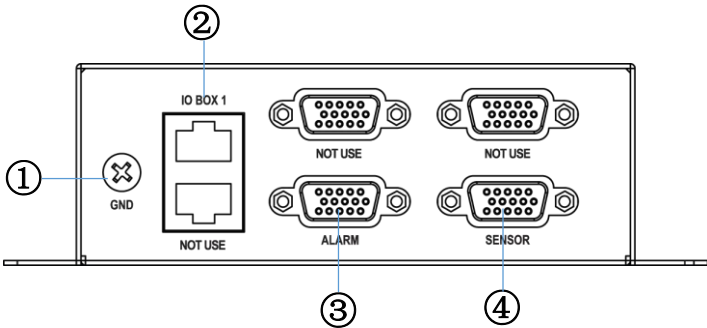
前面



名称		描述
1	LED 显示	显示以下状态。 -Link: 显示 I/O 盒的连接状态
2	拨码开关	设置车辆的行进方向。

\*有关 IP 盒 DIP 开关设置的详细信息，请参阅第 58 页。

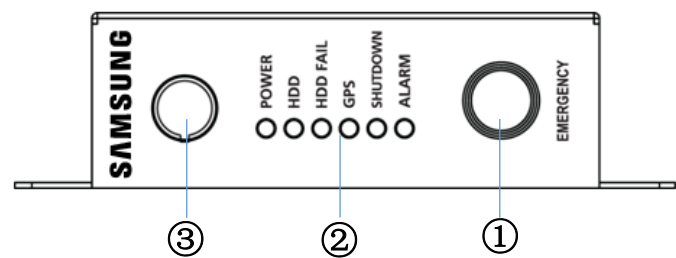
后面



名称		描述
1	接地	接地连接。连接到车身。
2	I/O 盒 1	连接到主机端口。
3	警报	报警输出连接外部设备。其他所需的电量。（集电极开路型）
4	传感器	连接到带有附件电缆外部设备。事件信号可以被发送到 NVR。

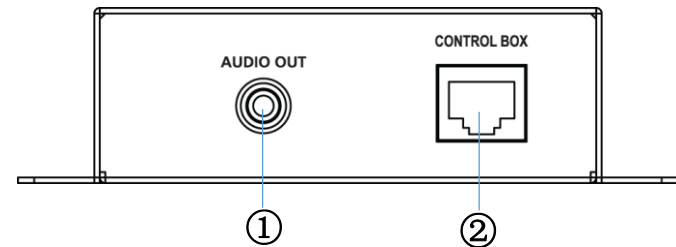
# 控制盒

前面



名称			描述
1	紧急		使用该按钮开始紧急录制。
2	LED 指示灯	POWER	显示控制盒的电源打开状态。
		HDD	存储设备（硬盘、SD）可用时亮起。
		HDD Fail	存储设备（硬盘、SD）不可用时亮起。
		GPS	在接收数据后 GPS 位置固定时亮起。
		SHUTDOWN	处理“关机延迟”时亮起。
		ALARM	警报输出正在工作时亮起。
3	IR 接收端口		接收来自远程控制器的 IR 信号。

后面



名称		描述
1	音频	音频线路输出。
2	控制盒	连接到主机的控制端口。

# 安装

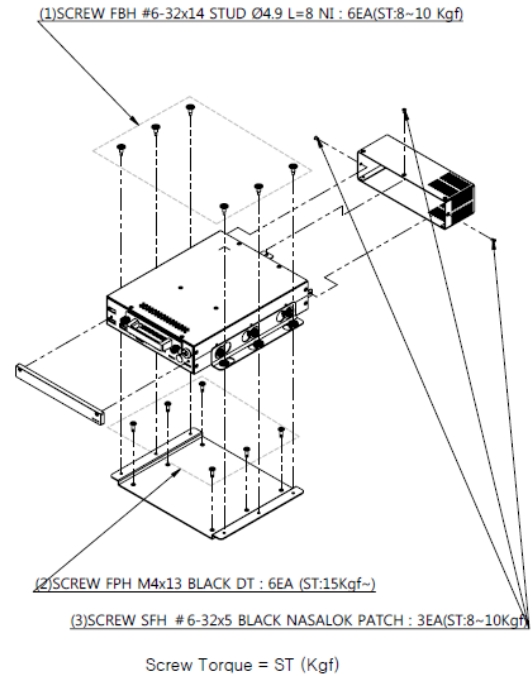
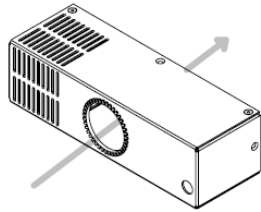
## 拆卸托架

1. 打开包装盒，取出产品。然后分开中轴与图片螺丝 (1)。

2. 将“底架”放在平坦的地方，并用图片中的螺钉 (2) 组装主要装置和支架

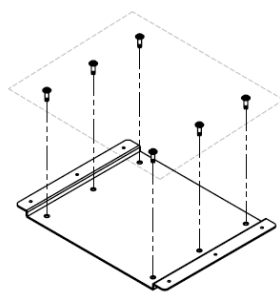
3. 用图片中的螺钉 (3) 组装后盖和主要装置。电缆必须通过后盖孔，如下图所示。

4. 牢固绑扎所安装的电缆。

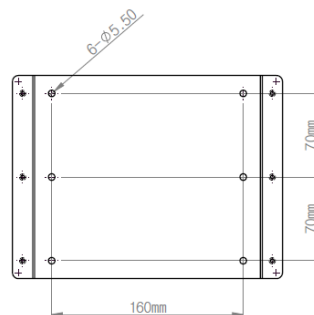


## 安装产品

如下图所示，使用 6 个螺钉，将托架装到产品安装位置。

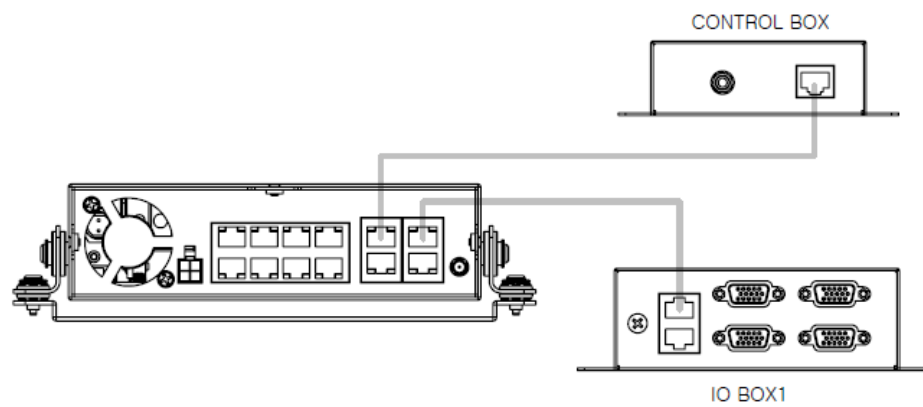


(ST: 15kgh 或更高)

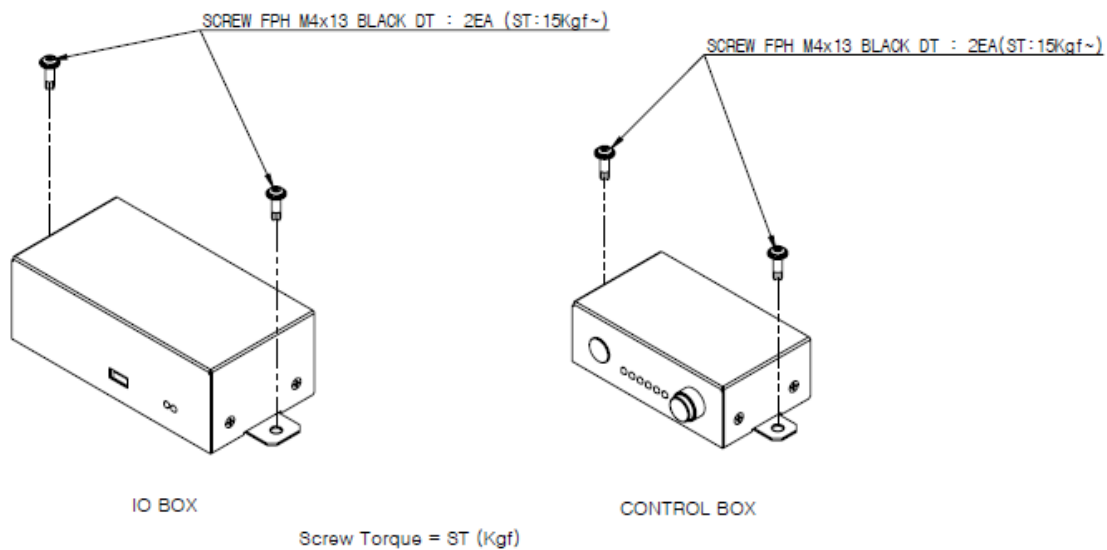


- ST = 螺钉的拧紧力
- 用推荐的力矩将螺钉拧紧

## 安装 IO 及控制盒



用提供的电缆连接 IO 盒和控制盒，如上图所示。



- ST = 螺钉的拧紧力
- 用推荐的力矩将螺钉拧紧

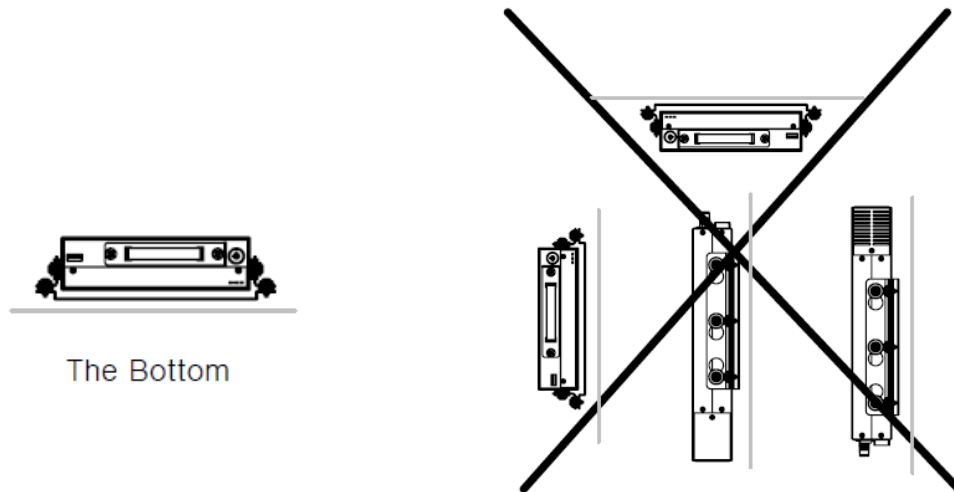
## 车上安装

---

当在底部安装，固定主单元到与 6 个螺钉安装在底部的安装板的支架。

**注意：**当底部安装，可能会导致硬盘的冲击问题。对于螺丝的扭力，见前页的图片。\* ST=扭力螺丝。

每个工具都有不同的扭矩，你应该遵循指导扭矩时安装。





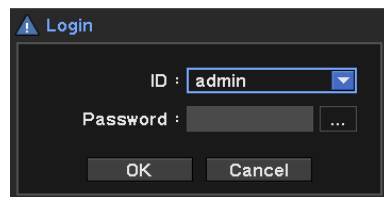
# 监视

## 启动/停止系统

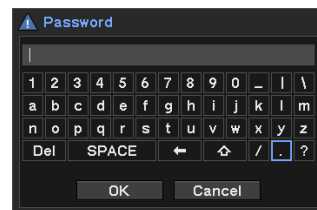
在安装在车辆上，用户应该首先设置系统了。连接 VGA 或 HDMI 显示器。如果显示器不显示，因为该决议，请按住上 5 秒遥控器上的“放大”键。（这将自动调整系统分辨率）。

## 登录

1. 连接系统电源。
2. 系统显示初始屏幕并开始初始化。
3. 系统显示登录屏幕。
4. 要登录，请选择“管理员（admin）”，然后单击“确定（OK）”。最初没有配置任何密码。  
\*如果已经配置密码，请单击密码字段并使用虚拟键盘（见下图）
5. 作为“管理员（Administrator）”登录系统。



**注意：**密码最长 8 位数，且应为数字 0 到 9 的组合。不允许使用特殊字符（&、#、<、>、`、~）。要输入新密码，请转到“用户菜单->系统->用户（UserMenu->System->User）”页面。



## 关闭系统

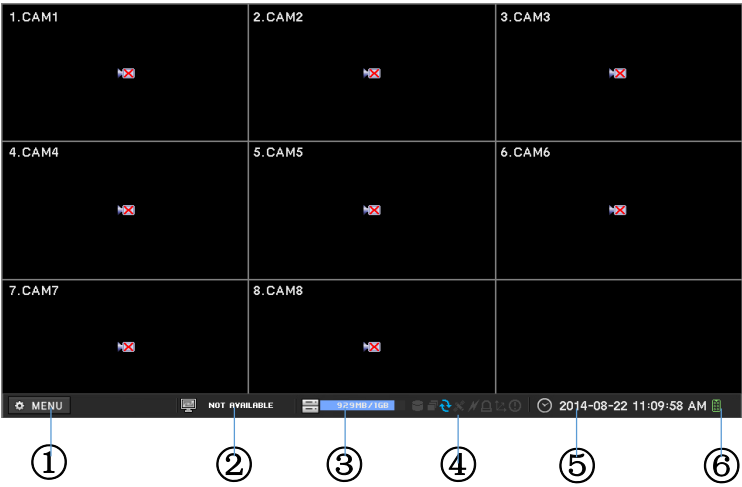
1. 单击“菜单（Menu）”，然后选择“关闭（Shutdown）”。

只有获得许可的用户才能关闭系统。



现场监控屏幕

一旦通过安装在车辆上的控制箱上的 VGA 或 HDMI 输出监视系统。



名称		描述	
1	菜单	打开 NVR 菜单	
2	数字标牌	显示数字标牌的状态。	
3	硬盘状态	用百分比显示硬盘的已用容量状况	
4	状态图标		存储数据时亮起
			运行顺序模式时亮起
			硬盘设置为覆盖模式时亮起
			卫星导航系统数据
			网络连通时亮起
			警报激活时亮起
			重力传感器激活时显示
			紧急录制打开时亮起
5	时间和日期信息	显示时间和日期信息	
6	远程控制器	IR 远程控制器激活时亮起. 无论系统 ID 如何, 遥控器都可以控制系统。如果系统 ID 设置为 “0” ,	

OSD 图标

在每个频道上显示以下状态图标。

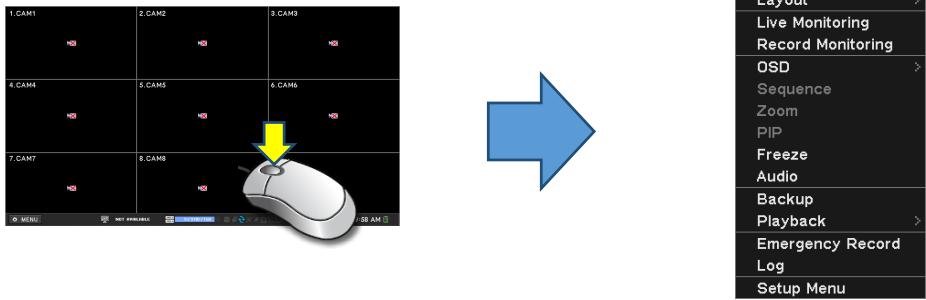
名称	描述	名称	描述
	不录制（绿色）		事件前录制（蓝色）
	录制中（红色）		运动检测
	紧急录制		传感器检测
	事件录制（红色）		IP 摄像机事件检测
	高分辨率播放*		

- 超出以下录制尺寸时显示，并且显示 1fps 速度。（4 分屏：1280x720 60fps，9 分屏：1280x720 30fps）

现场视图上的上下文菜单

按鼠标右键，看上下文菜单。常用的功能都在此菜单中。

在现场屏幕上右键单击



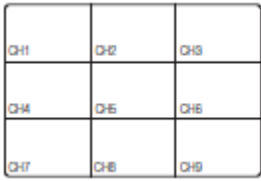
名称		描述
1	数字标牌	启动数字标牌。
2	摄像机	选择摄像机和显示方式
3	分割	选择屏幕模式
4	现场监控	显示 IP 摄像机图像
5	录制监控	显示实时录制状态
6	OSD	选择是否在 OSD 和位置信息应该在屏幕上显示出来
7	跳台	对现场频道排序
8	缩放	运行数字缩放
9	子母画面	运行 PIP 功能
10	冻结	冻结当前屏幕
11	声音	选择音频频道

12	备份	播放录制数据
13	回放	转到搜索播放模式
14	紧急录影	开始紧急录制
15	记录	显示当前系统日志
16	设置	打开设置菜单

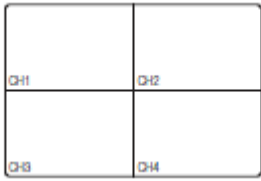
- 在现场模式中，音频声音输出基于“菜单-音频 (Menu-Audio)”中的频道配置。它不同于当前所选择的频道。

## 现场屏幕分屏

将现场屏幕显示为 9 分屏 (3x3)、4 分屏 (2x2) 和单画面。



3x3 (9 分屏)



2x2 (4 分屏)



单画面模式

要更改布局，请右键单击现场模式，然后选择摄像机或“布局 (Layout)”菜单。

Layout	>	2 x 2
Live Monitoring		3 x 3
Record Monitoring		Next Page
OSD	>	Previous Page

## 单频道现场视图

将所选频道放大为单个全屏。

- 将鼠标移动到所需的频道并双击鼠标左键，将显示所选频道的单频道视图
- 在遥控器上按下所需的频道编号，将显示所选频道的单频道视图
- 在现场视图上单击鼠标右键并选择“摄像机”，然后选择所需的频道。
- 再次双击可回到先前的模式。

## 备份

- 单击遥控器上的“备份”按钮
- 单击鼠标右键并打开上下文菜单。
- 在菜单上选择“备份 (Backup)”，然后设置存储设备和存档持续时间。
- 单击“开始 (start)”进行备份。

## 现场监控

在现场视图上选择“现场监控（Live Monitoring）”。系统显示所连接摄像机的现场状态和传输状态。

Live Monitoring

	Status			
1	-	-	-	-
2	-	-	-	-
3	-	-	-	-
4	-	-	-	-
5	H.264	1280x720	30fps	7.63M
6	-	-	-	-
7	-	-	-	-
8	H.264	1920x1080	28fps	5.47M

Close

## 录制状态

在现场视图上选择“录制监控（Record Monitoring）”。系统显示所连接摄像机的录制状态和传输状态。

Record Monitoring

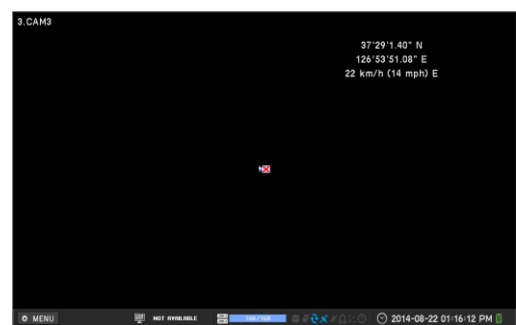
	Status			
1	H.264	1280x720	14fps	3669 Kbps
2	H.264	1280x720	15fps	3719 Kbps
3	H.264	1280x720	30fps	7467 Kbps
4	H.264	1280x720	30fps	1042 Kbps
5	-	-	-	-
6	-	-	-	-
7	-	-	-	-
8	-	-	-	-

Close

## 显示所述位置信息

在现场菜单屏幕上，选择‘OSD’，然后‘GPS 信息’。在此之后，接收到的位置信息是在现场画面的右上角。

\* 如果没有接收到信息时，将不被显示。



## 紧急录制

---

在现场模式下立即录制

1. 按控制盒上的“紧急录制 (Emergency Rec)”按钮。该按钮随即变为红色。
2. 按遥控器上的“E. REC”按钮。
3. 或者使用上下文菜单（用鼠标右键单击）选择“紧急录制 (Emergency Rec)”。

## 转到搜索模式

---

1. 单击遥控器上的“菜单 (Menu)”按钮。
2. 用鼠标右键单击现场模式打开上下文菜单。
3. 选择“播放 (Playback)”模式。

## 进入设置菜单

---

1. 单击“菜单 (Menu)”按钮，然后进入设置模式。
2. 或者使用上下文菜单选择“设置菜单 (Setup Menu)”。

# 系统设置

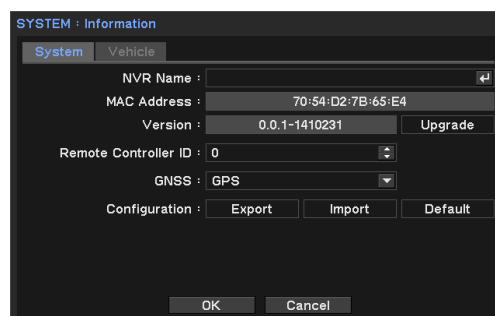
## 系统信息

### 常规信息设置

1. 单击“菜单(Menu)”，进入“系统->信息(SYSTEM->Information)”。
2. 输入 NVR 名称。（在多个设备访问时易于识别）
3. 在“远程控制器(Remote Controller)”上设置 ID。用户可以通过改变 ID 通过单个远程控制器控制多个 NVR。
4. 您可以选择卫星导航系统接收的位置信息时使用。

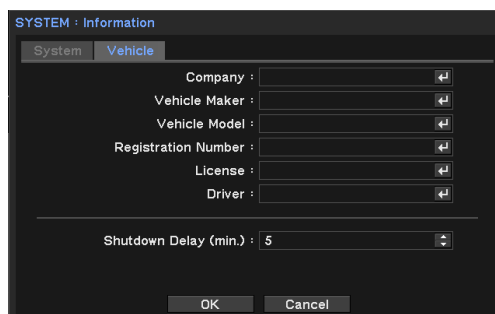
\*支持 GPS（全球定位系统）和 GLONASS。

5. 用户可以导出/导入和设置默认系统设置。（要进行导出/导入，需要使用 USB 存储器。）
6. 使用“默认(Default)”按钮恢复默认值。  
\*日期和时间、用户信息。显示分辨率，语言，网络设置（IP 地址，DDNS）不会被初始化。
7. 单击“确定(OK)”保存更改。



### 输入车辆信息

1. 单击“菜单(Menu)”，进入“系统->信息(SYSTEM->Information)”。
2. 输入所需信息。
3. 关机延迟：在关闭后，系统等待一段配置时间，然后安全关闭。
4. 单击“确定(OK)”保存更改。

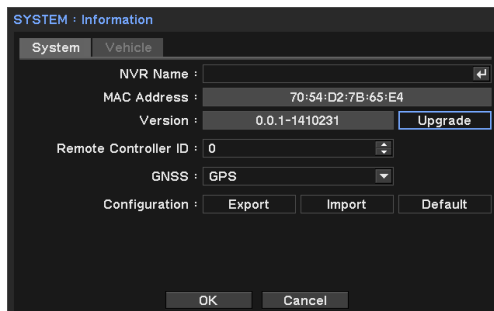


## 系统升级

将系统固件升级为新版本。

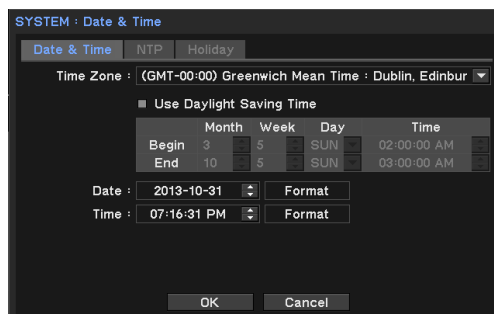
1. 单击“菜单（Menu）”，进入“系统->信息（SYSTEM->Information）”系统页面。
2. 插入包含更新文件的 USB 存储器。
3. 单击“更新（Update）”按钮，然后选择文件。
4. 使用所选文件开始升级。
5. 在升级完成后，系统自动重新启动。

*注意：切勿在升级过程中拔掉 USB 或断电。*




## 设置日期和时间

1. 单击“菜单（Menu）”，进入“系统->日期和时间（System-> Date&time）”。
2. 设置时区并选择选项“夏令时（daylight saving time）”。  
\* 设置起始日和结束日。
3. 设置日期和时间并选择显示格式。
4. 单击“确定（OK）”保存更改。

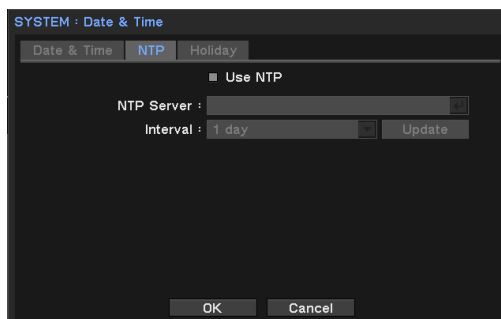


## NTP 设置

1. 在日期和时间设置菜单上选择“NTP”选项卡。
2. 选择“使用 NTP（Use NTP）”选项。
3. 单击  输入时间服务器。
4. 用虚拟键盘输入时间服务器名称。
5. 设置更新间隔并按下更新按钮。

*\*需要联网*

*注意：NTP 对于 NVR 运行而言非必需条件。由于流量较大或者时间同步服务器延迟，可能无法完成时间同步。*






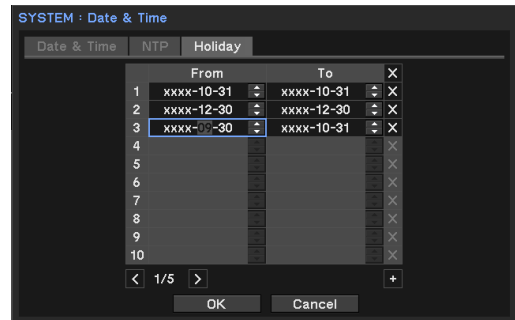
## 假日设置

---

将特定的一日或多日设置为假日，并应用不同的录制计划。

1. 转到日期和时间设置菜单上的“假日 (Holiday)”选项卡。
2. 单击  按钮并设置日期。
3. 单击“确定 (OK)”应用设置。

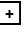
*注意：不同年份的假日可能在不同日期。用户可能需要每年更新其日期。*



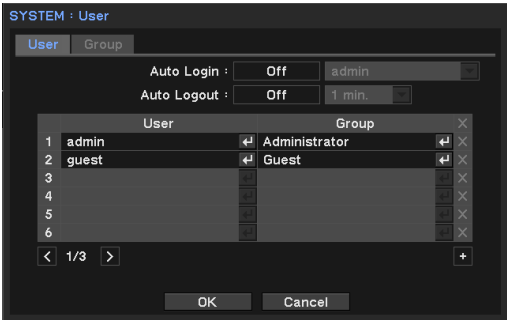
# 用户设置

用户可以定义新用户和组许可权。

## 添加新用户

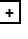
- 1. 单击“菜单（Menu）”，进入“系统-用户（SYSTEM-User）”。
- 2. 单击  按钮并添加新用户。
- 3. 使用虚拟键盘输入用户名并选择用户组。
- 4. 设置新用户的密码。

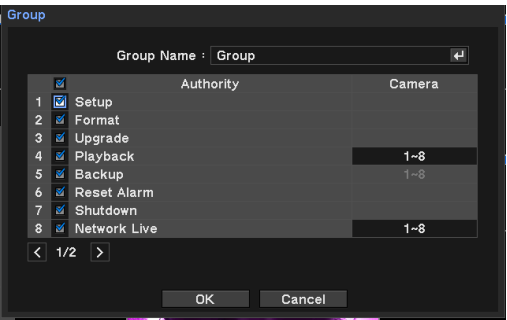
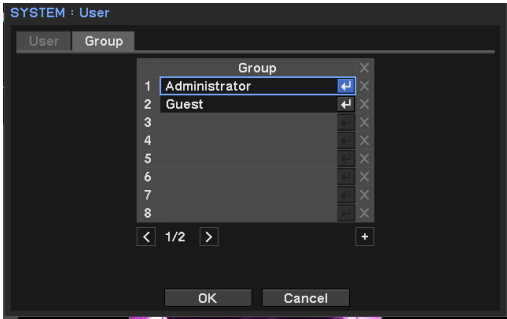
\*自动登录：所选用户自动登录。  
\*自动注销：在所设时间段无任何操作时注销。



## 添加新组并设置许可权。



管理员可以定义每个组的权限。（不对每个用户定义权限）

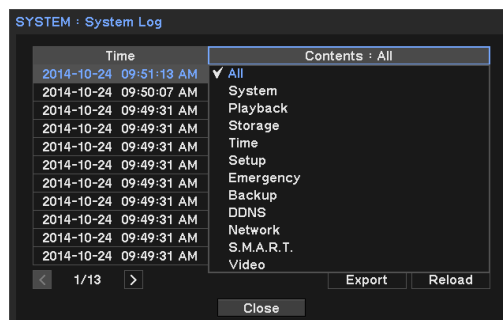
- 1. 转到“系统-用户（System-User）”菜单并选择“组（Group）”。
- 2. 单击  按钮。
- 3. 输入新组名称。
- 4. 对新组设置许可权。对每个权限设置摄像机频道（如果需要）。
- 5. 单击“确定（OK）”保存更改。



## 系统日志

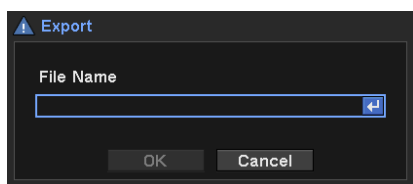
可以在该页搜索所有系统日志。

1. 单击“菜单（Menu）”，进入“系统->系统日志（SYSTEM->SYSTEM Log）”。
2. 要查看最新日志，请单击“重新加载（Reload）”按钮更新日志。使用   按钮转到后面的页面。



## 要导出日志文件：

1. 准备好 USB 存储器。
2. 将 USB 存储器查到系统上，进入“系统日志（System Log）”页面。
3. 单击“导出（Export）”按钮。
4. 设置文件名称，单击“确定（OK）”按钮。




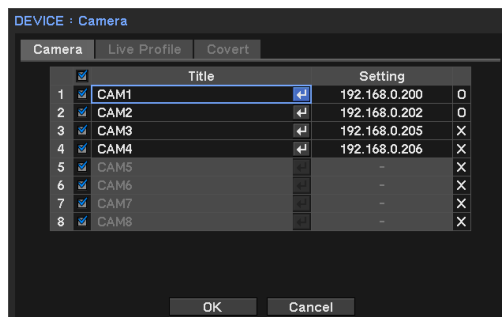
*注意：日志文件导出为 csv 文件格式。*

# 设备

在该菜单中，设置摄像机、音频、警报的配置

## 更改摄像机标题

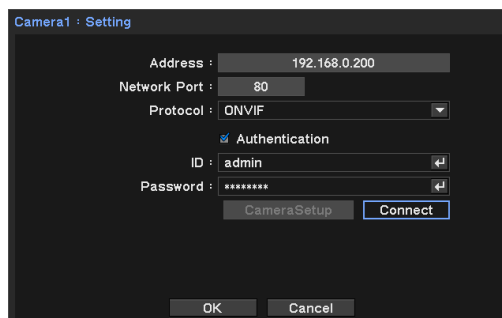
1. 单击“菜单（Menu）”，进入“设备->摄像机（DEVICE->Camera）”页面。
2. 选择摄像机，单击  更改标题。
3. 使用虚拟键盘设置新的摄像机名称。



## IP 摄像机设置

输入 IP 摄像机信息并授权其检查自身的工作状态。

1. 按摄像机菜单上的“IP 地址（IP Address）”
2. 选择“ONVIF”或“SUNAPI”为所需的协议的类型。  
  
\* SUNAPI（三星统一网络 API）：提供完整的单一界面来控制，并成立了各种产品构成连接到视频安防系统与 Samsung 公司的专用协议的网络。
3. 输入所需 IP 摄像机的 IP、端口和 ID/密码。
4. 选择“授权（Authentication）”，单击“连接（Connect）”检查 IP 摄像机连接状态。
5. 出现“登录（Log in）”成功消息后，表明已正常连接。  
如果连接失败，请再次检查信息。
6. 单击“确定（OK）”保存信息。



## 相机功能设置

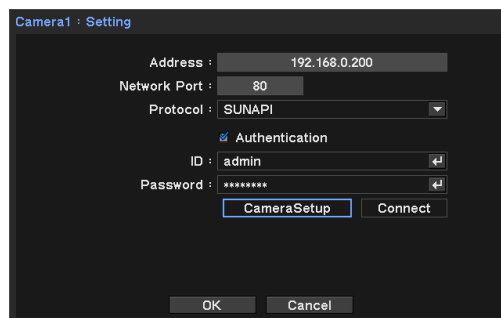
按“CameraSetup”按钮来设置你的相机，一边看所选摄像机的实时视频。

\*您可以设置拍照功能只能连接到 SUNAPI 协议。

\*有关相机设置的详细信息，请参阅相机用户手册。

\*设置和操作规范取决于每个摄像机的不同而不同。

\*此功能不支持某些型号



1. SDR: 如果在暗和亮区之间的显著差异，增加的暗区的亮度维持整个区域的亮度的级别。模式，水平，动态范围可设定。



2. 背光: 您可以查看亮区和暗区。模式，WDR 水平，HLC 水平，面具音调和 BLC 水平可设置。



3. 曝光: 您可以调整摄像头的曝光。亮度控制，快门，防闪烁，SSNR，感光度，并且收益可以设置。



4. 特别声明：锐度，灰度，颜色，除雾和 DIS（晃动补偿），可设置。



5. 昼/夜：你可以改变模式调整色彩和对比度。模式，切换时间，报警时间，报警的输入/输出，并且活化时间可以设置。



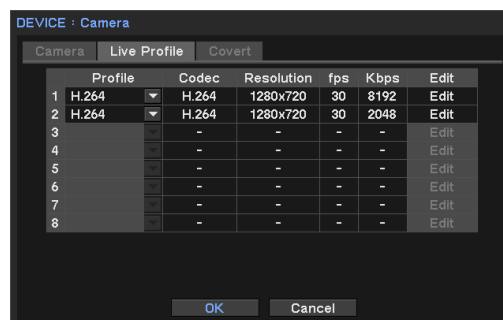
6. 翻转：镜子和翻转模式下可以设置。



与摄像头设置完成后，点击“关闭”按钮搬回到上一画面。

## 现场配置文件

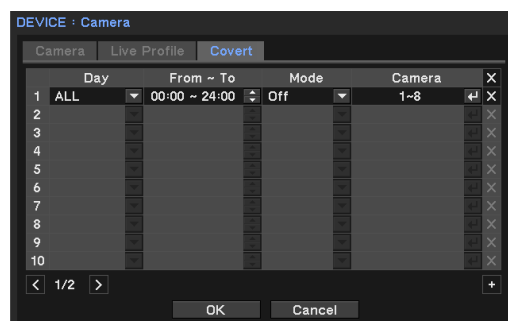
1. 进入“设备->摄像机->现场配置文件 (Device->Camera->Live profile)”页面。
2. 其中显示所连接摄像机的配置文件。用户可以在每个摄像机上选择配置文件，调整只有编解码器和分辨率可用的摄像机。
  - 配置文件：显示在连接相机可用的配置文件。（查看详情的个人资料中第 32 页）。
  - 编解码器：图像压缩算法的类型。
  - 分辨率：现场监控的图像尺寸。
  - Fps：现场监控的帧数。
  - Kbps：现场监控的图像数据大小。
3. 单击“编辑 (Edit)”按钮编辑配置文件。
4. 单击“确定 (OK)”保存更改。



## 隐蔽（隐藏）摄像机

根据登录用户隐蔽（隐藏）现场视图上的摄像机。

1. 单击“菜单 (Menu)”，进入“设备->摄像机 (DEVICE->Camera)”页面。
2. 进入“隐蔽 (Covert)”选项卡。
3. 在“从 - 到 (From - To)”字段中设置时间计划。
4. 选择隐蔽模式。
  - 低隐蔽模式：除 OSD 之外无显示。
  - 高隐蔽模式：完全无显示。
5. 单击“确定 (OK)”保存更改。



**注意：**对录制数据无任何影响。这只应用于监控。

**注意：**上一页隐蔽通道设置不应用到已经连接的智能浏览器。  
将被应用到哪个被新连接智能查看器。

# 配置文件设置

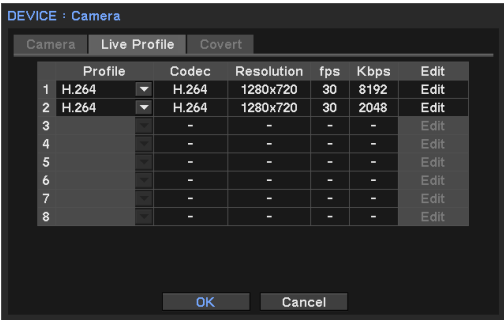
网络摄像机通常提供单个或多个配置文件，用户可以选择现场、录制和网络传输配置文件等详细信息。

系统共享所添加的配置文件。一旦您编辑了现场、录制或网络配置文件，系统会自动更新其他配置文件。

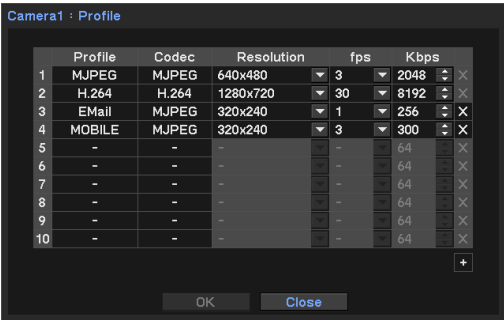
- 现场配置文件：“菜单->设备->摄像机->现场配置文件（Menu->Device->Camera->Live profile）”
- 录制配置文件：“菜单->录制->录制->录制配置文件（Menu->Recording->Recording->Record profile）”
- 网络配置文件：“菜单->网络->传输->网络配置文件（Menu->Network->Transmission->Network profile）”

## 添加配置文件

1. 选择现场、录制或网络配置文件，然后转到该菜单。



2. 单击右侧的“编辑（Edit）”按钮，屏幕上显示当前配置文件信息。



3. 要添加新的配置文件，请单击下方的“+”按钮，然后设置配置文件名称、编解码器、分辨率、fps 和 Kbps 信息。

- 不同摄像机的可用配置文件可能存在差异



4. 单击“确定（OK）”保存更改。



摄像头压缩	录像配置	备注
H.264	当比特率超过 4Mbps 的，帧速率应为 5frames 或更高。	如果 720P 或更高分辨率的
MJPEG	2Mbps 的或更少	

## 编辑个人资料

- 1~2. 同“添加会员”
3. 如果你想要编辑所选配置文件目前的资料，按下“编辑”按钮。然后，选择配置文件的名称，编解码器，分辨率，FPS，Kbps 的
4. 按“确认”按钮，保存设置


## 删除个人资料

- 1~2. 同“添加会员”
3. 如果你想删除目前的资料，对选定的配置文件按“X”按钮。
4. 按“是”在删除检查 Windows 按钮，保存设置。

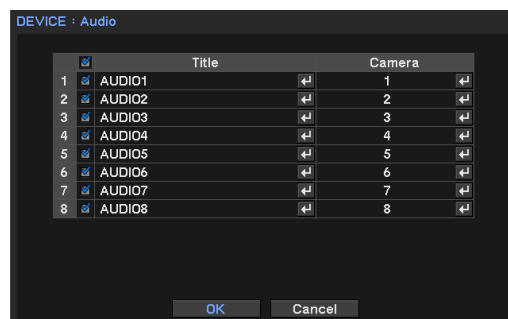
# 音频

## 音频连接

NVR 录制每个频道上的声音。

1. 单击“菜单（Menu）”，进入“设备->音频（DEVICE->Audio）”页面。
2. 选择音频频道，将标题更改为想要的名称。
3. 在“摄像机（Camera）”字段中单击 ，然后选择摄像机编号。
4. 单击“确定（OK）”保存更改。

**注意：**应使用本产品的随附线缆输入音频。

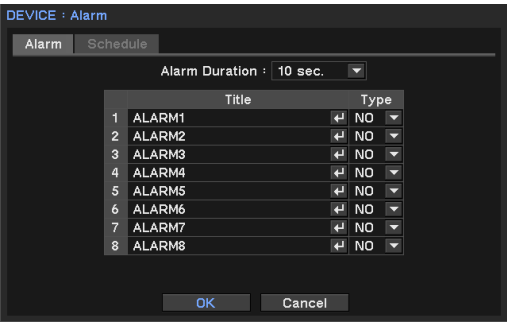


# 警报

设置警报类型和计划。

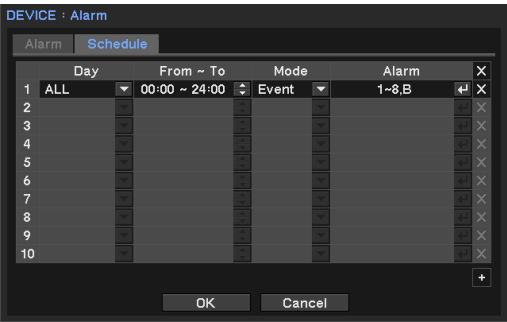
## 设置警报类型和持续时间

- 1. 单击“菜单（Menu）”，进入“设备->警报（Device-Alarm）”页面。
- 2. 设置警报计划的持续时间（5 秒到 10 分钟）
- 3. 选择警报频道，将标题更改为想要的名称。
- 4. 选择警报类型
  - NO：常开。
  - NC：常闭
- 5. 单击“确定（OK）”保存更改。



## 设置警报计划

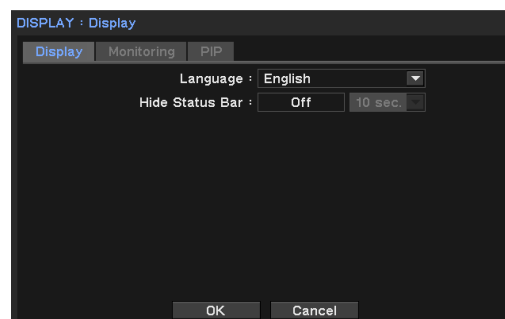
- 1. 进入“计划（Schedule）”选项卡。
- 2. 选择警报激活的“日（Day）”和时间。
- 3. 选择模式。（事件、开、关）
- 4. 选择警报输出编号和蜂鸣器选项。
- 5. 单击“确定（OK）”保存更改。  
\*如果计划重叠，将优先选择最新计划。



# 显示

## 设置监视器显示和显示语言

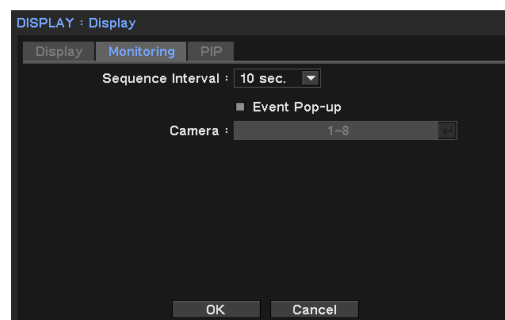
1. 单击“菜单（Menu）”，进入“显示（Display）”页面。
2. 设置您的语言和其他显示选项。
3. 要更改显示分辨率，请进入“分辨率（Resolution）”菜单选择所需分辨率。
4. 单击“确定（OK）”保存更改。



## 弹出事件触发频道

显示（弹出）事件触发的频道，持续时间为所设置时间。

1. 单击“菜单（Menu）”，进入“显示-监控（Display-Monitoring）”页面。
2. 设置“顺序间隔（Sequence interval）”时间
3. 选择“事件弹出（Event popup）”选项。
4. 选择发生事件时应显示的摄像机编号。
5. 单击“确定（OK）”保存更改。

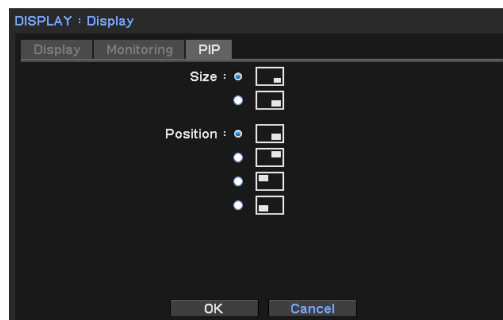


## PIP（画中画）设置

---

1. 单击“菜单（Menu）”，进入“显示-PIP（Display-PIP）”页面。
2. 设置“大小（Size）”和“位置（Position）”。
3. 单击“确定（OK）”保存更改。

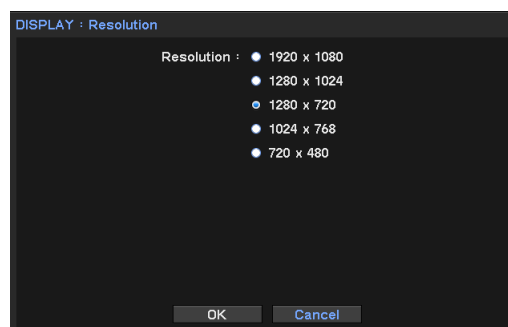
*注意：PIP 仅在现场单画面显示上可用。*



## 分辨率设置

---

1. 按“菜单（Menu）”并移动到“显示-分辨率（Display-resolution）”页面。
2. 设置分辨率
3. 按“确定（Ok）”保存更改。



# 数位广告

## 数位广告的设置

1. 在设置菜单中，移动 Display > Digital Signage 的数字标牌页面。
2. 设置自动开始时间的数字标牌。
3. 按导入按钮来插入 USB 存储器后，选择一个文件，然后单击确定。
4. 选中启用 FTP，并进入 FTP 服务器/用户/密码/文件名（目录），然后单击确定。  
按下连接按钮来检查服务器的连接。



\* 数字标牌文件使用 DSmaker 创建的。

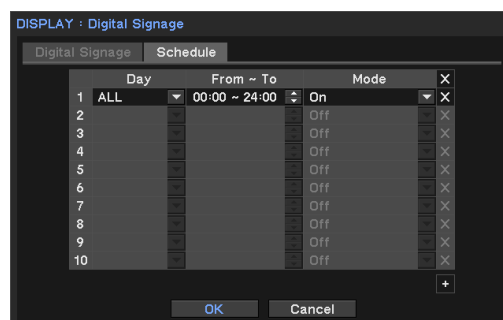
\* 启用 FTP: 如果你设置这个，它会定期访问 FTP 服务器自动下载广告文件的最新版本。

\* FTP 服务器必须与“大小”命令来检查文件的大小支持。

## 数位广告的设置进度

1. 在设置菜单中，移动到 Display > Digital Signage 的计划页。.
2. 选择日期选项。
3. 设定开始/结束时间。
4. 指定的模式。
5. 点击确定保存。

\* 如果录制计划是相互重叠的，那么最新注册的时间表将有一个更高的优先级。

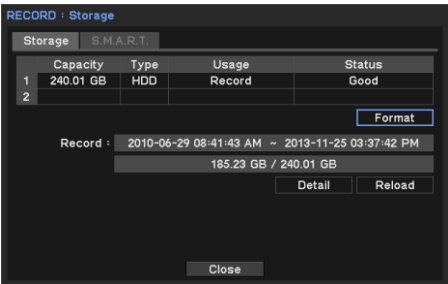


# 录制设置

设置存储设备和录制选项。

## 设置存储设备

- 1. 单击“菜单（Menu）”，进入“录制->存储设备（Record->Storage）”。
- 2. 系统列出已安装的硬盘。
- 3. 要使用硬盘作为存储设备，请选择一个硬盘，然后单击下方的“格式化（Format）”按钮。
- 4. 完成格式化后，单击“关闭（close）”。



注意：“录制（Record）”显示数据存储期和硬盘空间已占用量。

## 录制设置

- 1. 单击“菜单（Menu）”，进入“录制->录制（Record->Record）”。
- 2. 选中“覆盖”选项。

\*如果不选择，系统只记录数据，直到目前的硬盘已满。

时间录制属于连续录制

仅当触发事件时才进行事件录制。

紧急录制：通过外部的“紧急录制”信号激活。

- 3. 选择’自动 Delection’选项。  
\*当安装日期已过的旧数据被自动删除。
- 4. 单击“确定（OK）”保存更改。

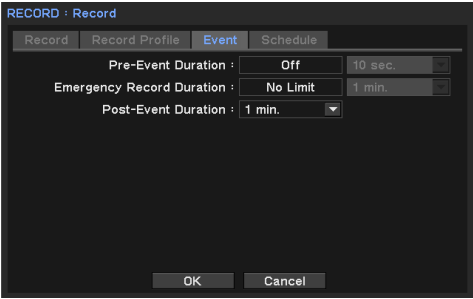


## 录制配置文件


选择配置文件进行录制。请参阅第 32 页的详细信息。

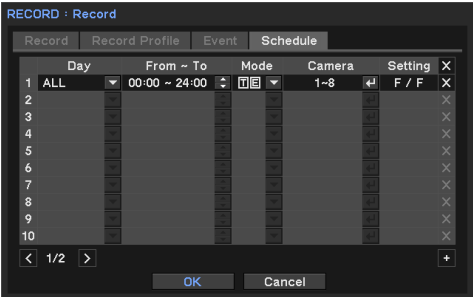
## 事件录制设置

1. 转到“事件（Event）”页面。
2. 将“事件前持续时间（Pre-Event Duration）”设置为“打开（On）”，并设置时间。  
系统将录制事件触发前的数据。
3. 设置紧急录制的时间。如果设置为“无限制（No Limit）”，则一直录制，直到关闭紧急录制。
4. 事件录制持续时间表示常规事件录制持续时间。
5. 单击“确定（OK）”保存更改。



## 设置录制计划。

1. 单击“菜单（Menu）”，进入“录制->录制（Record->Record）”部分的“计划（Schedule）”选项卡。
2. 在“日（day）”字段上设置“日（day）”选项。  
\*每行选择一个“日（day）”选项。
3. 在“从 - 到（From - To）”字段中设置录制时间。
4. 选择录制模式。
5. 选择要应用的摄像机。
- 要删除计划，请按右侧的  按钮。

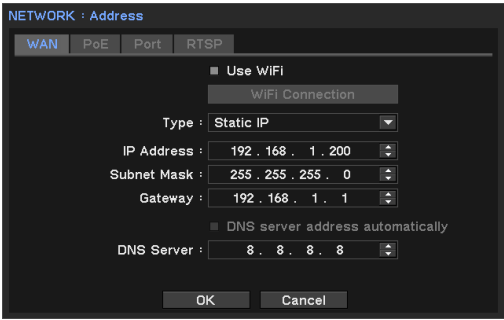


# 网络

## 设置 IP 地址

1. 单击“菜单（Menu）”，然后转到“网络->地址->WAN（Network->Address->WAN）”页面。
2. 选择“Wi-Fi”选项。使用“Wi-Fi”时，在列表中选择 AP（接入点）。
3. 选择一个 IP 地址类型。  
\*在“DHCP”选项中不需要任何 IP 地址设置。
4. 在“静态 IP（Static IP）”选项中，您需要输入 IP 地址、子网掩码和网关。
5. 单击“确定（OK）”保存更改。

注意：要更改通信端口，请进入该菜单中的“端口（PORT）”页面。



## WiFi 连接

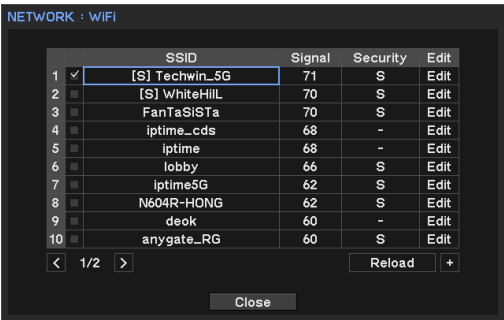
1. 连接无线网络适配器，以 NVR 的主体。.
2. 在设置菜单中，移动到 Network > Address. 的广域网的页面。
3. 选中启用 WiFi 和按 WiFi 连接按钮。
4. 在接入点列表中搜索，点击的 SSID 的 AP 来连接。
5. 如果认证是必需的，在窗口中输入密码。.

\*当前连接的 AP 上标有五。

\*如果 AP 连接丢失时，将自动尝试连接到先前连接的接入点。

\*如果一个 AP 之前被连接，则其（S）在其 SSID 的前面。

\*兼容的 WiFi 适配器：SEA-W01AC（Samsung）



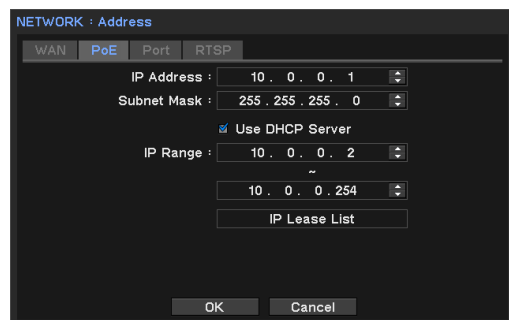


## PoE 设置（以太网供电）

1. 单击“菜单（Menu）”，然后转到“网络->地址->PoE（Network->Address->PoE）”页面。
2. 设置 IP 地址和子网掩码。
3. 选择“DHCP 服务器（DHCP server）”选项。使用该系统作为 DHCP 服务器时，必须设置将分配到所连接 IP 摄像机的 IP 范围。

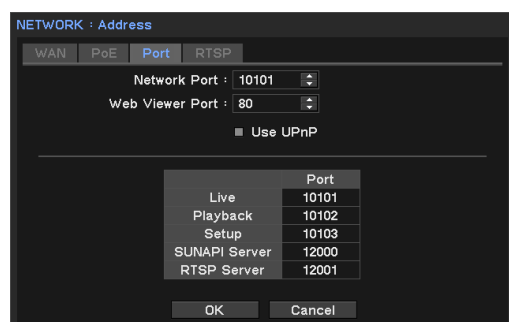
\* 应在 DHCP 选项中设置所连接摄像机。

4. 单击“确定（OK）”保存更改。



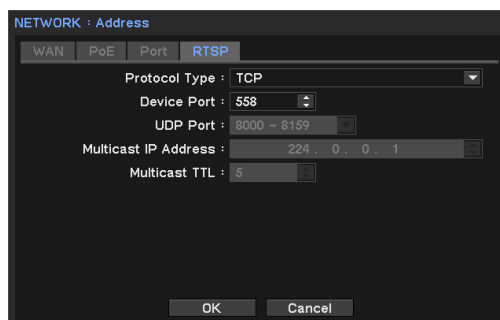
## 设置端口

1. 单击“菜单（Menu）”，然后转到“网络->地址->端口（Network->Address->Port）”页面。
2. 设置用于远程监控、播放和设置的端口。默认值是“10101”。  
\* 设置“现场（Live）”端口后，系统自动设置其他端口。
3. 设置 Web 查看器的端口。默认值是“80”。
4. 使用 UPnP：该功能可实现在路由器上执行自动端口转发。



## RTSP 端口

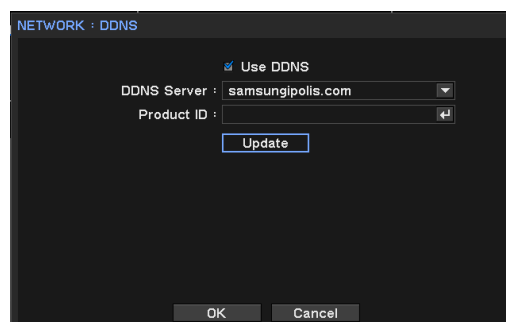
1. 按菜单并移动到“网络 - > 地址 - > RTSP 页面”。
2. 协议类型：选择 TCP，UDP 间的协议类型 - 单播和 UDP - 组播。
3. 设备端口：输入连接端口号码。默认值是“558”。  
\* *TCP*：它具有更好的稳定性和相比，*UDP*，并建议互联网环境下的速度。
4. UDP 端口：最初，“8000~8159”的设定。它增加/减少 160。  
\* *UDP*：它具有降低了稳定性，当与 *TCP* 相比，并建议用于局域网（LAN）的环境中更快的速度。
5. 组播 IP 地址：用户可直接输入。
6. 多播 TTL：从 0~255 默认选择为“5”。



## DDNS 设置

要进行远程访问，请使用 DDNS 服务并完成 DDNS 服务器设置。

1. 单击“菜单（Menu）”，进入“网络-DDNS（Network-DDNS）”。
  2. 选择“使用（Use DDNS）”选项。
  3. 输入“产品 ID（Product ID）”，然后单击“更新（Update）”检查其是否正常访问 DDNS 服务器。
  4. 单击“确定（OK）”保存更改。
- 有关 DDNS 设置的详细信息，请参阅您的路由器手册。



## 通过网络通知事件

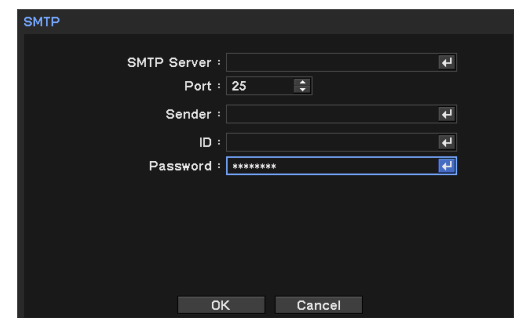
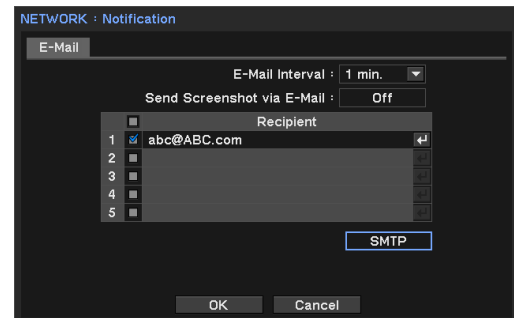
---

使用提供的功能來發送消息到電子郵件.

## 电子邮件设置

---

1. 单击“菜单（Menu）”，然后转到“网络->通知->电子邮件（Network->Notification->Email）”页面。
2. 设置电子邮件间隔。  
\*在间隔时间之间不发送事件。
3. 选择对电子邮件附加图像的选项。
4. 输入接收方的电子邮件地址。
5. 单击 SMTP 按钮并输入信息。
6. 单击“确定（OK）”保存更改。

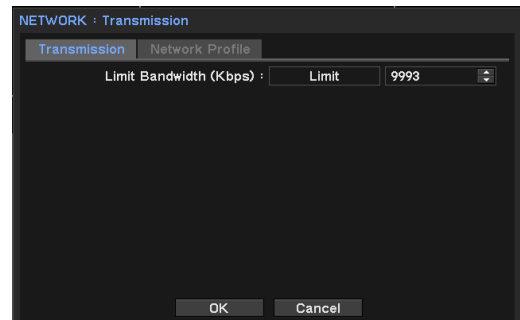


## 网络传输

---

调整网络数据流选项并予以优化。

1. 单击“菜单 (Menu)”，然后转到“网络->传输->传输 (Network->Transmission->Transmission)”页面。
2. 根据您的网络速度设置网络带宽。
3. 单击“确定 (OK)”保存更改。



## 网络配置文件

---

选择配置文件实时监控。请参阅第 32 页的详细个人资料。

# 事件

设置事件相关选项，如传感器、移动、视频丢失、系统、重力传感器和 IP 摄像机。

## 关于事件触发以及激活录制、警报和通知

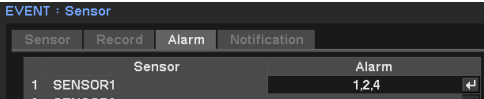
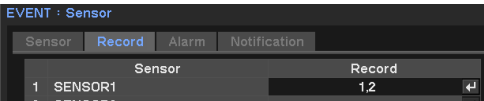
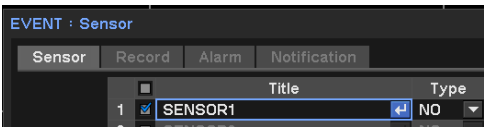
可以为每个触发事件激活以下操作。

- 1. 录制：开始在所选的多个频道上录制。
- 2. 警报：开始在所选的多个频道上发出警报或蜂鸣器警报。
- 3. 通知：通过“回拨（Callback）”或“电子邮件（E-mail）”向远程计算机发送消息。

### 例 1) 传感器设置

一旦触发传感器 1，将录制频道 1 和 2，对频道 1、2、4 发出警报并发送通知

- 1. 单击“菜单（Menu）”，进入“事件->传感器（Event->Sensor）”页面。
- 2. 勾选“传感器 1（Sensor1）”并设置类型（“常开（NO）”或“常闭（NC）”）。
- 3. 单击“录制（Record）”选项卡，然后单击“传感器 1（Sensor1）”的“录制（Record）”字段并选择频道 1 和 2。
- 4. 单击“警报（Alarm）”选项卡，然后单击“传感器 1（Sensor1）”的“警报（Alarm）”字段并选择频道 1、2 和 4。



\* 要注册您的电子邮件地址 - 设置，进入“网络>的通知”页面。

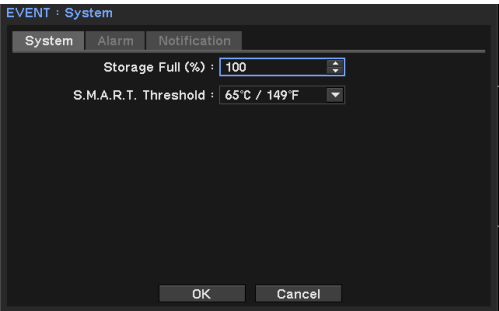
\*移动侦测，视频丢失和 IP 摄像机的事件设置为相同的设置传感器的事件。

\*传感器名称可以在列表中选择传感器名称进行更改。

## 系统通知

通过警报和回拨通知系统状态。

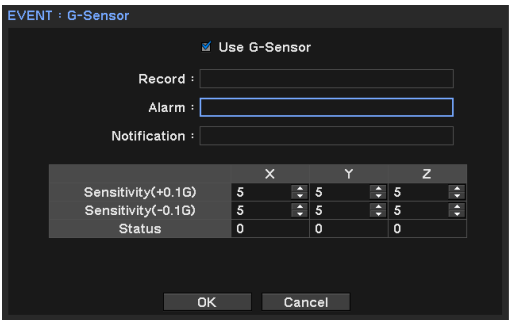
1. 设置存储全%。当存储达到这个水平时，发生系统通知。
2. 设置温度 SMART 阈值水平，以收到通知。
3. 设置警报和通知。（请参见上面的示例）



## 重力传感器通知

检测运动，如突然加速，停止和可疑事故。

1. 单击“菜单(Menu)”，进入“事件->重力传感器(Event->G-Sensor)”页面。
2. 选择“使用重力传感器(Use G-sensor)”。
3. 单击“录制(Record)”字段，然后选择触发事件时应录制的频道。
4. 单击“警报(Alarm)”字段，然后选择要激活警报的频道。
5. 选择如果你想从“通知”列宣布事件的电子邮件地址。
6. 设置每个 x、y 和 z 轴的灵敏度。

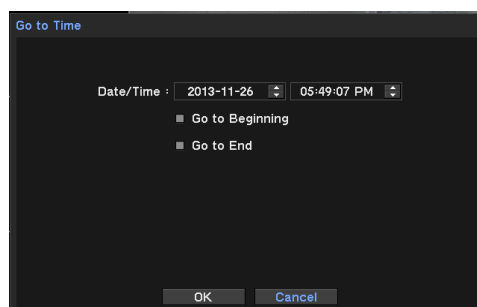


\*如果附带的重力感应 IO 盒 DIP 开关的配置是错误的，它会产生不必要的报警。请检查 DIP 开关配置时安装。

# 播放（搜索）

## 时间搜索（转到时间）

1. 用鼠标右键单击现场模式，选择“播放（Playback）”。
2. 选择录制有数据的存储设备。
3. 系统进入“播放（搜索）”模式
4. 再次单击鼠标右键，选择“转到（Go to）”。
5. 选择“转到时间”选项。
6. 设置日期和时间，然后单击“确定（OK）”播放。



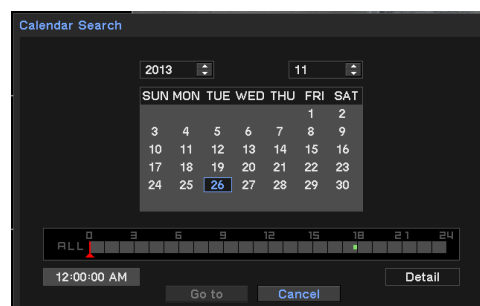
### 关于搜索选项

- 转到时间：设置时间并转到特定时间。
- 转到开头（Go to Beginning）：转到所录制的首个数据。
- 转到末尾（Go to End）：转到数据的末尾。
- 转到 \*\*秒：转到以前录制的的数据。（\*\* 以前的数据）。

\*当显示播放数据也就是接近搜索条件显示单通道图像。

## 日历搜索

- 1~3. 与“时间搜索”相同。
4. 再次单击鼠标右键，选择“日历（Calendar）”。
5. 设置日期和时间，然后单击“转到（Go To）”。
6. 在屏幕上显示所选数据。使用下面的播放控制按钮。



7. 要退出播放模式，请单击鼠标右键，然后选择“退出播放（Exit Playback）”。

## 事件搜索

按照录制事件列表提供轻松搜索。

1~3. 与“时间搜索”相同。

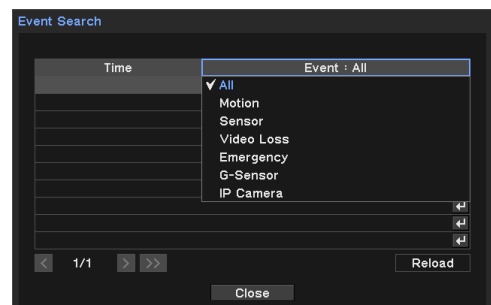
4. 再次单击鼠标右键，选择“事件搜索（Event Search）”。

5. 选择要查找其特定数据的事件的日期和类型。

\*事件以 1,000 为单位进行搜索，按 >> 按钮可查看后面的 1,000 个事件。

\*您可以在“日志（Log）”菜单事件页面上搜索事件。

\*当您搜索使用的 SmartViewer，确认事件记录范围，则必须选择“所有”，在“高级搜索”菜单。



## 备份数据播放

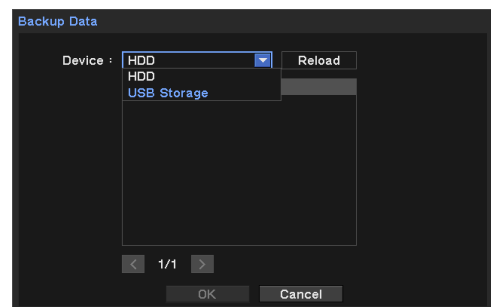
1. 用鼠标右键单击现场模式。

2. 选择“备份数据（Backup data）”

3. 选择“设备（Device）”和文件

4. 系统显示播放屏幕。使用下面的播放控制按钮。

\*只有存在备份文件时，备份播放才可用。



## 播放控制

**反向播放：**反向播放（1x->2x->..64x -> 1x）

**反向分步：**转到上一图像

**暂停：**冻结或停止当前图像

**正向分步：**转到下一图像

**播放：**以正常速度播放数据（1x->2x->..64x -> 1x）

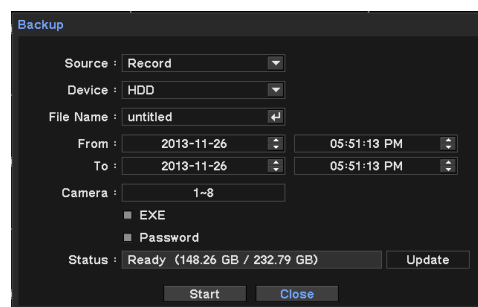




# 备份

## 备份录制数据

1. 用鼠标右键单击现场模式。
2. 选择备份，然后选择类型。（备份或 AVI 制造商或 SEC）
3. 将 USB 存储器插入系统 USB 端口。.
4. 选择用于备份数据的“设备（Device）”（通常使用 USB 存储器）
5. 设置数据备份期和摄像机。
6. 选择“EXE”选项和“密码（Password）”选项。
7. 单击“开始（Start）”按钮。
  - “STRG”可以发挥多路视频，使用“备份数据播放”功能。“EXE”可以在电脑采用独家的媒体播放器播放多路视频。
  - “SEC”保存为独家格式（秒），它可以使用内置的媒体播放器中的备份播放多声道播放。
  - ‘AVI’是一个通道支持的备份浏览器或一般的媒体播放器。
  - 信道信息（摄像机名称，时间）被保存与‘AVI’备份过程中字幕文件（SMI）。
  - 而数据备份正在处理，不要取出存储设备。



# Web 客户端访问

使用 Web 浏览器访问系统。

启动 Web 查看器（Java 的，应安装在您的 PC 上）

---

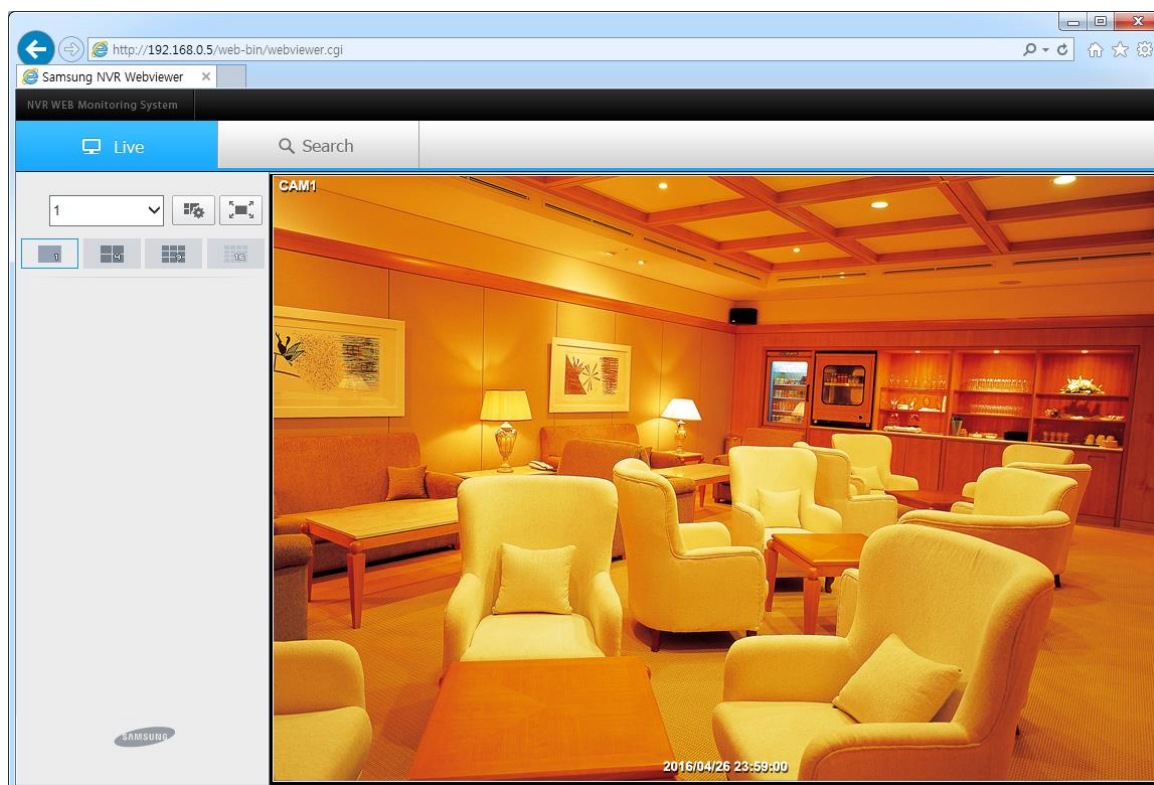
1. 运行 Web 浏览器，输入 NVR 或 DDNS 地址的 IP 地址。
2. 进入登录页面上的 ID 和密码。




- 视窗推荐要求: *Windows 7 (32bit)*  
的 Mac OS 推荐: *OS X Yosemite (10.10.5)*
- 不安全的模式操作可以在 Safari 浏览器中运行（推荐: *Safari 8.0.8 10600.8.9*）

## 现场查看

1. 如果您在登录成功，你可以看到如下的现场查看。



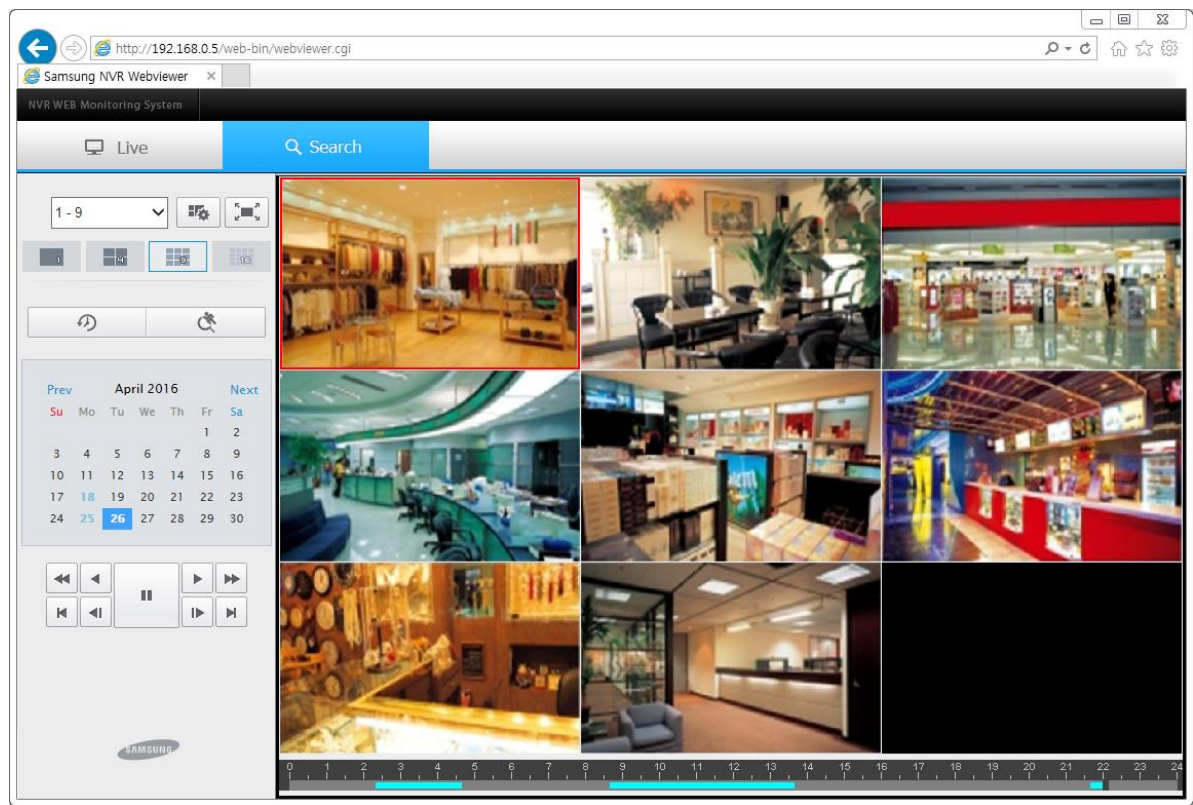
2. 使用下面的按钮来控制视频直播。

按钮	描述	按钮	描述
	选择摄像机		远程设置
	整个屏幕		移动搜索
	更改布局（双击特定的视频，如果你想看到它的大屏幕）		

\* 在 1 路布局使音频功能。

搜索查看

1. 新闻搜索标签图标
- Search
- 移动到搜索查看




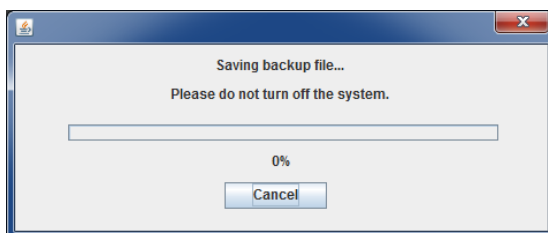
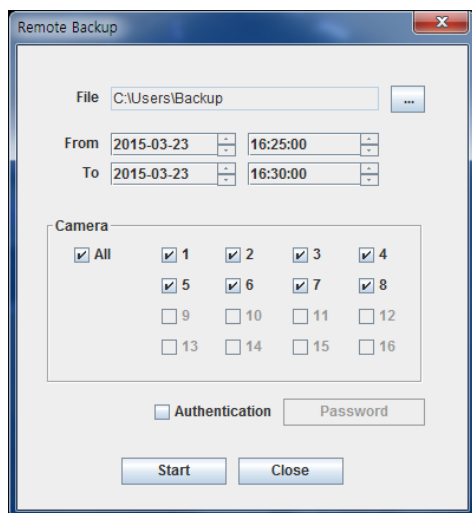
2. 使用下面的按钮来控制视频直播.

按钮	描述	按钮	描述
<div>1</div>	选择摄像机	<div></div>	事件搜索
<div></div>	事件搜索	<div></div>	远程设置
<div></div>	快进/后退播放	<div></div>	整个屏幕
<div></div>	2~64x 播放	<div></div>	更改布局
<div></div>	移动 1 帧	<div></div>	移动到第一个/最后一个
<div></div>	暂停		

\* 在 1 路布局使音频功能.

## 远程备份

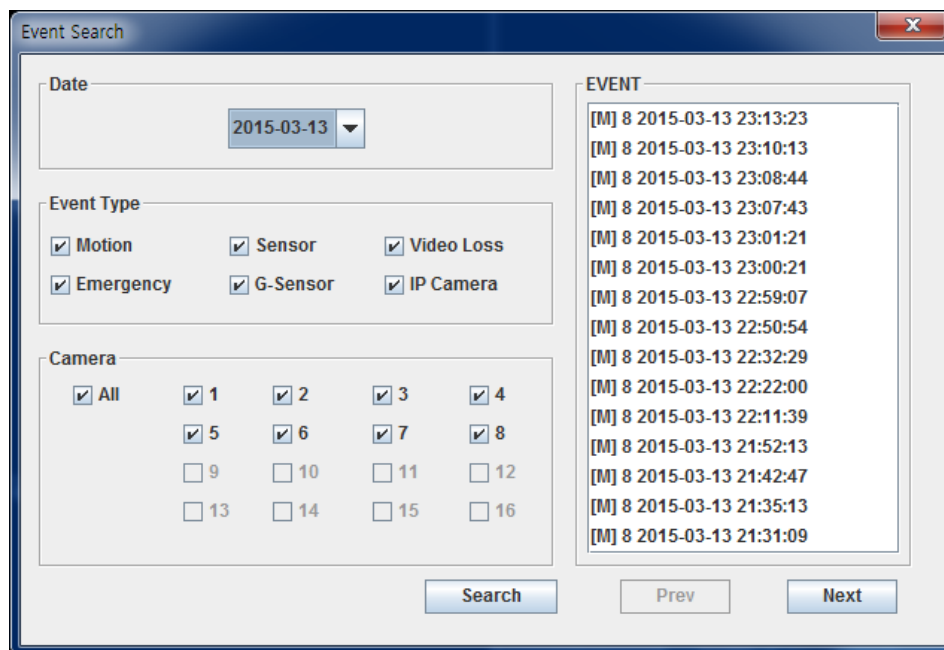
1. 在搜索查看，按远程备份图标  显示远程备份对话框。
2. 输入存储地点，日期和时间，摄像机编号，密码后按启动按钮。



3. 完成备份，备份的数据文件，备份浏览器文件和库文件后，将被保存。
- \* Web 查看器支持'秒'备份。

## 事件搜索

1. 选择日期，事件类型，摄像机编号，然后按搜索按钮。
2. 每个事件列表显示 15 事件后，按下下一步按钮，看看未来 15 事件。
3. 选择的事件中的一个上看到搜索查看该视频帧。



The image shows a software window titled "Event Search". It contains three main sections for filtering events: "Date", "Event Type", and "Camera".

- Date:** A dropdown menu showing "2015-03-13".
- Event Type:** A grid of checkboxes for "Motion", "Sensor", "Video Loss", "Emergency", "G-Sensor", and "IP Camera". All are currently checked.
- Camera:** A grid of checkboxes for "All" and cameras numbered 1 through 16. "All" is checked.

At the bottom are three buttons: "Search", "Prev", and "Next".

On the right side, there is a list box titled "EVENT" containing 15 entries, each starting with "[M] 8" followed by a date and time:

- [M] 8 2015-03-13 23:13:23
- [M] 8 2015-03-13 23:10:13
- [M] 8 2015-03-13 23:08:44
- [M] 8 2015-03-13 23:07:43
- [M] 8 2015-03-13 23:01:21
- [M] 8 2015-03-13 23:00:21
- [M] 8 2015-03-13 22:59:07
- [M] 8 2015-03-13 22:50:54
- [M] 8 2015-03-13 22:32:29
- [M] 8 2015-03-13 22:22:00
- [M] 8 2015-03-13 22:11:39
- [M] 8 2015-03-13 21:52:13
- [M] 8 2015-03-13 21:42:47
- [M] 8 2015-03-13 21:35:13
- [M] 8 2015-03-13 21:31:09

- 信息将显示在“事件类型”，“摄像机编号”，“日期”，“时间”的顺序，它们被留下空格隔开。
- 事件的类型有运动（M），传感器（S），视频丢失（V），紧急（E），G-传感器（G），IP 摄像机（I）。

# 数位广告 Maker

您可以创建用于数字标牌的广告文件。

## 创建视频广告

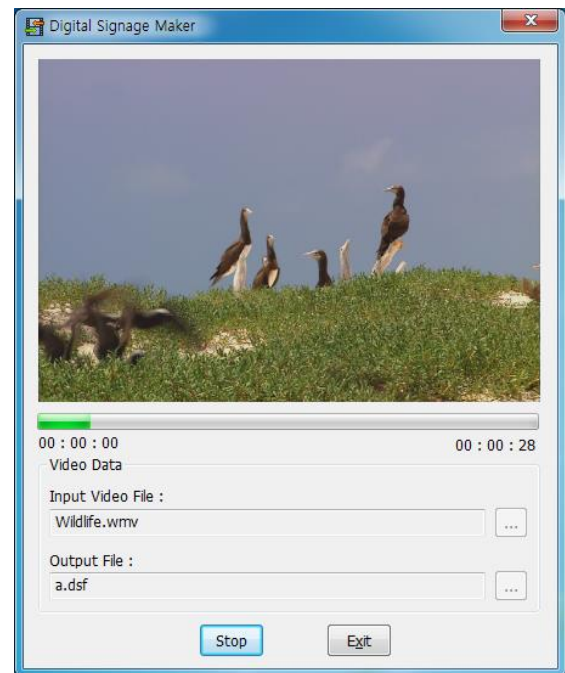
---

1. 选择一个视频文件进行转换。
2. 选择驱动程序/文件夹来保存转换后的广告文件，输入文件名。
3. 按下开始按钮，开始转换。  
下面的进度条中，开始/结束时间将被显示来显示进度。
4. 按 STOP 按钮向上转换为当前的进度。
5. 转换后的文件复制到 USB 存储器的顶层文件夹，将其插入 NVR 的，按进口数字标牌菜单。

\* AVI, MP4, MOV 和 WMV 文件可以转化为广告的文件。

\*广告的文件大小最大为 1GB。

\*如果文件没有保存在 USB 的顶层文件夹。 NVR 将检测不到它。



# 附录

## 系统规格

视频		SRM-872
网络摄像机	输入	最多 8 频道
	分辨率	CIF, VGA, 4CIF, 1.3M, 2M, 3M, 5M
	协议	ONVIF, SUNAPI
安装	摄像机设置	分辨率、帧速率、位速率设置。
	查看器	内置 Web 查看器
	多屏幕监视器显示	1/4/9
性能		
操作系统		嵌入式 Linux
录制	压缩	H.264, MJPEG
	录制位速率	64Mbps
	录制速率	最高 240fps @1280 x 720 (1.3M)
	模式	紧急, 计划 (时间/事件), 事件 (前置/后置)
	覆盖模式	连续, 自动删除, 可设置保留时间段
	警报前	最长 30 秒
	警报后	最长 6 小时
事件	来源	传感器、移动探测、视频丢失、重力传感器、IP 摄像机事件
网络	以太网	1 个千兆位以太网端口, 8 个 FE 端口带 PSE
	传输速度	最大 1Gbps
	最多远程用户数	现场 (10)/搜索 (3)/设置 (1)
	协议支持	TCP/IP、DHCP、SMTP、NTP、HTTP、DDNS、RTP、RTSP, UDP
	监控	CMS、Webviewer、智能手机查看器。
	连接模式	静态/DHCP
存储器	内置硬盘	1 个硬盘 (2.5") 或 1 个固态硬盘
	可移除	Micro SD - Max 32GB - Class 6 Over (Write 10MB/s Over)
备份	USB	两个 USB 端口 (使用下面两个端口)
	文件格式	STRG (NVR 播放器)、EXE (含有播放器)、AVI, SEC
搜	功能	8 频道搜索/播放、GPS 信息、重力传感器
移动 DVR CMS	SDK	SDK 支持 - 在线视频/音频传输
接口		
视频	输入	8 个 RJ-45 (支持 PoE)
	输出	1 个 HDMI, 1 个 VGA, 最高 1080p
音频	输入	网络摄像机音频输入, 最多 8 个频道
	压缩	G.711、G.726
	外部音频输出	1 个电话插口 (主机), 1 个 RCA 连接器 (控制盒)



警报	输入	终端 8 个输入，常开/常闭(N0/NC)
	输出	终端 8 个输出，常开/常闭(N0/NC)
其他	以太网	1 个 RJ45 (10/100/1000 Base-T 以太网)
	USB	3 个 USB (2.0 高速)
	GPS	1 SMA
功能		
电源管理	关机延迟	1 分钟到 30 分钟 (用户可选择)
常规		
电气	输入电压	12V ~ 24V DC
	功耗	最高 30W
	摄像机功率输出	每个频道最高 8W，共 64W (PoE、IEEE802.3af)
环境	工作温度/湿度	25° C 到 +50° C (-13° F 到 +122° F) /20% 到 85% 相对湿度
机械	尺寸 (宽 x 高 x 深)	<ul style="list-style-type: none"> <li>• 系统: 225.5mm X 59mm X 312.2mm</li> <li>• I/O 盒: 155mm X 44mm X 70mm</li> <li>• 控制盒: 121mm X 32mm X 75mm</li> </ul>
	重量 (不带硬盘)	<ul style="list-style-type: none"> <li>• 系统: 2.83 Kg</li> <li>• I/O 盒: 0.35Kg</li> <li>• 控制盒: 0.18Kg</li> </ul>
认证	EMC/安全性	CE、FCC、cUL、e-Mark、KC、EN50155
	冲击和振动	MIL STD-810F 方法 514.5、EN61373

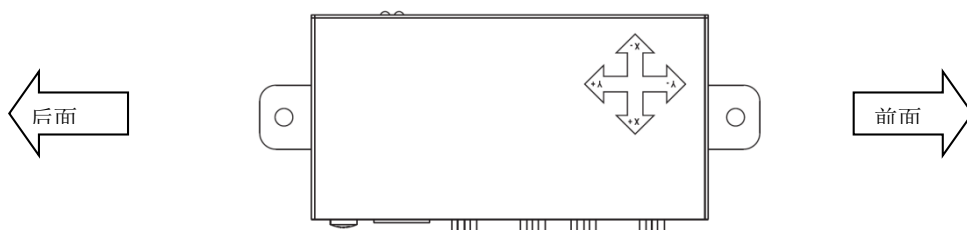
## I/O 盒安装

### 1. 安装注意事项

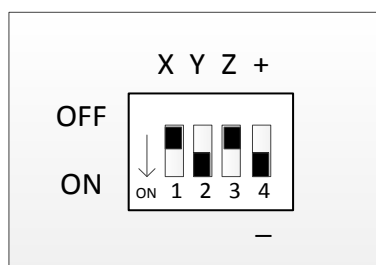
提供内部 I/O 盒重力传感器。安装时注意以下安装指导。

- 无论在何处安装，保持与车辆齐平。
- 安装时确保与车辆行驶方向以及产品外壳上的 X、Y、Z 轴平行或对齐。
- 检查行驶方向和轴，并正确设置前面的 DIP 开关。

例如）如果按下图安装



如下图所示将拨码开关设置为“Y-”。



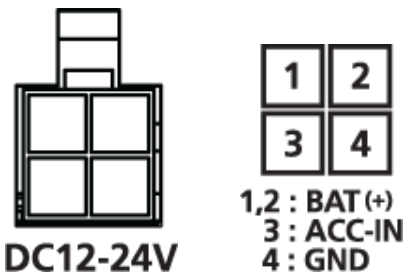
### 2. 注意事项

保持级别和之前的电源输入被添加到该设备，因为 I/O 盒校准重力感应，当系统初始化的 DIP 开关的设置应该做的。如果水平不保持水平或错拨码开关设置，系统可能无法 G-传感器校准。如果设备不能校正，将 G-传感器输出值将不会再次调整，它会从 I/O 箱发送传感器的输出数据到主机。

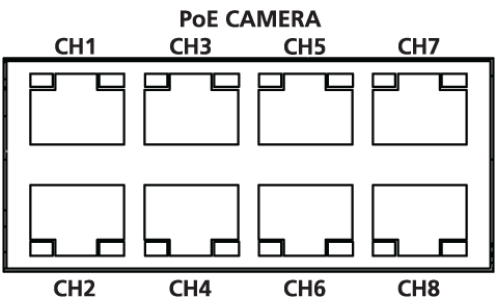
# 连接器针脚图

## 1. 电源连接器

- VCC/ACC 输入范围是 12Vdc 至 24Vdc。
- VCC 电源针脚应连接到车辆上的电源，ACC 电源针脚应连接到车辆上的辅助电源。
- ACC电源意味着在“ACC”模式下转动钥匙时打开电源。
- 



## 2. IP 摄像机输入连接针脚图



编号	PoE 电力输出/数据输入
1	TX+, DC+
2	TX-, DC+
3	RX+, DC-
4	未使用
5	未使用
6	RX-, DC-
7	未使用
8	未使用

- 保持级别和之前的电源输入被添加到该设备，因为 I0 盒校准重力感应，当系统初始化的 DIP 开关的设置应该做的。如果水平不保持水平或错拨码开关设置，系统可能无法 G-传感器校准。如果设备不能校正，将 G-传感器输出值将不会再次调整，它会从 I0 箱发送传感器的输出数据到主机。

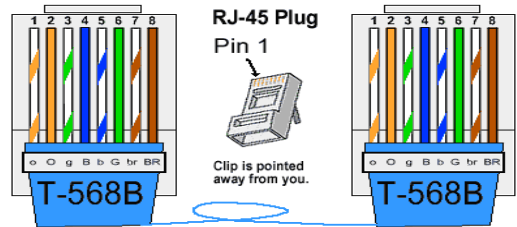
3. UTP 电缆针脚图 (I/O 盒 1/2, 控制盒)

- RJ-45 连接器针脚图

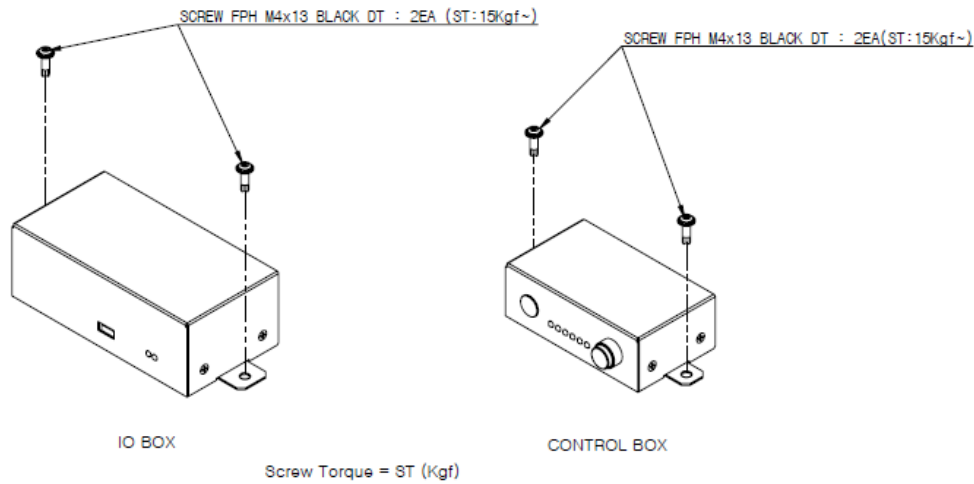
编号	I/O 盒 1	I/O 盒 1	控制盒
1	未使用	未使用	未使用
2	未使用	未使用	接地
3	I/O 盒 TXD	未使用	模拟音频
4	VCC 12V	未使用	VCC 12V
5	VCC 12V	未使用	控制盒 TXD
6	I/O 盒 RXD	未使用	接地
7	接地	未使用	控制盒 RXD
8	检测针脚	未使用	检测针脚

- UTP 电缆

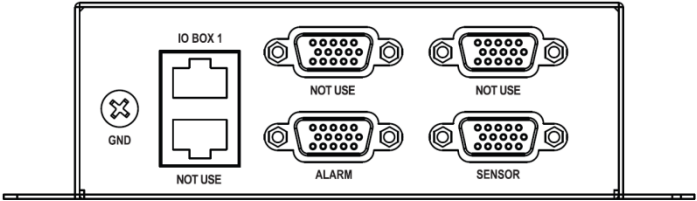
使用直通式 UTP 电缆。



4. 安装 (I/O 盒, 控制盒)



5. I/O 盒 D-SUB15 针脚图



编号	警报/传感器	编号	警报/传感器
1	信号 1	9	信号 5
2	接地	10	接地
3	信号 2	11	信号 6
4	接地	12	接地
5	信号 3	13	信号 7
6	接地	14	接地
7	信号 4	15	信号 8
8	接地		

- 传感器输入连接**  
将一条传感器信号线连接到“信号（Signal）”端口，另一条传感器信号线连接到“接地（GND）”端口。
- 警报输出连接**  
它可能会导致系统故障过多的电压或电流与’集电极开路“型的警报器时使用。使用前联系安装这种类型。

## 常见问题解答

问题	操作
系统未打开且前面板上的 LED 指示灯不工作。	<ul style="list-style-type: none"> <li>检查电源系统是否正确连接。</li> <li>通过电源检查系统的输入电压。</li> </ul>
已连接视频输入，但是一些频道不显示对应的视频。	<ul style="list-style-type: none"> <li>检查连接摄像机的 webviewer 的视频输出。</li> <li>检查网络端口是否正确连接以及网络设置是否正确设置</li> <li>转到“菜单&gt;设备&gt;摄像机&gt;设置 (Menu&gt;Device&gt;Camera&gt;Setup)”并再次为摄像机输入 ID/PW。</li> </ul>
只是不断显示徽标。	<ul style="list-style-type: none"> <li>主板或软件可能有缺陷。请与您的服务提供商联系。</li> </ul>
即使已连接，监视器上仍无屏幕显示。	<ul style="list-style-type: none"> <li>按下遥控器上的“缩放 (zoom)”按钮 5 秒钟可自动调整分辨率。</li> </ul>
无法发布触发的警报。	<ul style="list-style-type: none"> <li>将“菜单&gt;设备&gt;警报&gt;计划 (menu&gt;device&gt;alarm&gt;Schedule)”上的“小时 (hour)”选项更改为“关闭 (off)”或“事件 (Event)”模式。</li> </ul>
无法通过 PC 访问系统。	<ul style="list-style-type: none"> <li>检查网络电缆是否已连接。</li> <li>检查 PC 上的 IP 地址配置。</li> <li>进行网络 Ping 测试。</li> <li>检查网络上是否有其他设备使用相同的 IP 地址。</li> </ul>
系统显示“无硬盘 (NO HDD)”图标以及错误消息弹出窗口。	<ul style="list-style-type: none"> <li>检查 HDD 连接状态。如果连接状态没有问题，请与您的服务提供商联系，请他们来检查 HDD。</li> </ul>
系统未进行录制。	<ul style="list-style-type: none"> <li>首先检查实时图像。如果没有实时图像，那么系统将不会录制。</li> <li>检查录制配置是否正确。如果配置不正确，那么系统将不会录制。</li> </ul>
录制的图像质量不佳。	<ul style="list-style-type: none"> <li>更改“菜单&gt;录制&gt;录制配置文件 (Menu&gt;record&gt;Record profile)”上的“分辨率 (resolution)”和“比特率 (bit rate)”选项。</li> </ul>
录制的帧速率与摄像机上配置的帧不同。	<ul style="list-style-type: none"> <li>如果摄像机连接和使用多个配置文件，那么它处理帧的速率将比配置的帧速率低。尽可能使用与单画面相同的配置文件设置摄像机。换句话说，也就是让摄像机与“录制、实时和网络配置文件 (Record, live and network profile)”相同。</li> </ul>
无法接收 GPS 信号。	<ul style="list-style-type: none"> <li>检查 GPS 天线连接状态。</li> <li>在车辆外朝天空均匀放置 GPS 天线。如果天线的安装有误，那么通过磁性底垫收到的数据会不稳定。</li> </ul>
在“停止 (Stop)”状态时触发了 G 传感器事件。	<ul style="list-style-type: none"> <li>断开 IO 盒上的电缆并根据车辆的移动方向相应地设置 DIP 开关，然后再次连接电缆。</li> </ul>
给系统通电时发出蜂鸣声。	<ul style="list-style-type: none"> <li>可以通过事件配置设置发出蜂鸣声。请参阅事件设置。</li> <li>不使用“微型 SD (Micro SD)”时，系统会发出蜂鸣声，直到 HDD 处于“即用”状态。如果使用“微型 SD (Micro SD)”，系统则会将数据存储在“微型 SD (Micro SD)”上，直到系统温度达到 HDD 写入点，当系统达到该温度时，系统会切换到 HDD。</li> </ul>
关机后系统仍然处于“通电 (on)”状态。	<ul style="list-style-type: none"> <li>检查“菜单-&gt;系统信息 (Menu-&gt;System Information)”上的“关闭延迟 (Shutdown Delay)”选项。系统在配置的时间之内将保持通电状态。</li> </ul>

## OPEN SOURCE LICENSE REPORT ON THE PRODUCT

The software included in this product contains copyrighted software that is licensed under the GPL/LGPL. You may obtain the complete Corresponding Source code from us for a period of three years after our last shipment of this product by sending email to [help.cctv@hanwha.com](mailto:help.cctv@hanwha.com).

Also, We used ffmpeg as a static link for video decoding in the iOS Mobile Viewer iPOLiS Auto.

We can provide object code associated with video decoding in the iOS Mobile Viewer iPOLiS Auto.

- GPL Software : linux kernel, u-boot, busybox, parted, ntfs-3g
- LGPL Software : glibc, ffmpeg
- OpenSSL License : OpenSSL
- Apache License : mDNSResponder

/-----/

GNU GENERAL PUBLIC LICENSE

Version 2, June 1991

Copyright (C) 1989, 1991 Free Software Foundation, Inc. 51 Franklin St, Fifth Floor, Boston, MA 02110-1301 USA Everyone is permitted to copy and distribute verbatim copies of this license document, but changing it is not allowed.

### Preamble

The licenses for most software are designed to take away your freedom to share and change it. By contrast, the GNU General Public License is intended to guarantee your freedom to share and change free software—to make sure the software is free for all its users. This General Public License applies to most of the Free Software Foundation's software and to any other program whose authors commit to using it. (Some other Free Software Foundation software is covered by the GNU Library General Public License instead.) You can apply it to your programs, too. When we speak of free software, we are referring to freedom, not price. Our General Public Licenses are designed to make sure that you have the freedom to distribute copies of free software (and charge for this service if you wish), that you receive source code or can get it if you want it, that you can change the software or use pieces of it in new free programs; and that you know you can do these things.

To protect your rights, we need to make restrictions that forbid anyone to deny you these rights or to ask you to surrender the rights. These restrictions translate to certain responsibilities for you if you distribute copies of the software, or if you modify it.

For example, if you distribute copies of such a program, whether gratis or for a fee, you must give the recipients all the rights that you have. You must make sure that they, too, receive or can get the source code. And you must show them these terms so they know their rights.

We protect your rights with two steps: (1) copyright the software, and (2) offer you this license which gives you legal permission to copy, distribute and/or modify the software.

Also, for each author's protection and ours, we want to make certain that everyone understands that there is no warranty for this free software. If the software is modified by someone else and passed on, we want its recipients to know that what they have is not the original, so that any problems introduced by others will not reflect on the original authors' reputations.

Finally, any free program is threatened constantly by software patents. We wish to avoid the danger that redistributors of free programs will individually obtain patent licenses, in effect making the program proprietary. To prevent this, we have made it clear that any patent must be licensed for everyone's free use or not licensed at all. The precise terms and conditions for copying, distribution and modification follow.

### GNU GENERAL PUBLIC LICENSE TERMS AND CONDITIONS FOR COPYING, DISTRIBUTION AND MODIFICATION

0. This License applies to any program or other work which contains a notice placed by the copyright holder saying it may be distributed under the terms of this General Public License. The "Program", below, refers to any such program or work, and a "work based on the Program" means either the Program or any derivative work under copyright law:

that is to say, a work containing the Program or a portion of it, either verbatim or with modifications and/or translated into another language. (Hereinafter, translation is included without limitation in the term "modification".) Each licensee is addressed as "you". Activities other than copying, distribution and modification are not covered by this License; they are outside its scope. The act of running the Program is not restricted, and the output from the Program is covered only if its contents constitute a work based on the Program (independent of having been made by running the Program).

Whether that is true depends on what the Program does.

1. You may copy and distribute verbatim copies of the Program's source code as you receive it, in any medium, provided that you conspicuously and appropriately publish on each copy an appropriate copyright notice and disclaimer of warranty; keep intact all the notices that refer to this License and to the absence of any warranty; and give any other recipients of the Program a copy of this License along with the Program. You may charge a fee for the physical act of transferring a copy, and you may at your option offer warranty protection in exchange for a fee.

2. You may modify your copy or copies of the Program or any portion of it, thus forming a work based on the Program, and copy and distribute such modifications or work under the terms of Section 1 above, provided that you also meet all of these conditions:

a) You must cause the modified files to carry prominent notices stating that you changed the files and the date of any change.

b) You must cause any work that you distribute or publish, that in whole or in part contains or is derived from the Program or any part thereof, to be licensed as a whole at no charge to all third parties under the terms of this License.

c) If the modified program normally reads commands interactively when run, you must cause it, when started running for such interactive use in the most ordinary way, to print or display an announcement including an appropriate copyright notice and a notice that there is no warranty (or else, saying that you provide a warranty) and that users may redistribute the program under these conditions, and telling the user how to view a copy of this License. (Exception: if the Program itself is interactive but does not normally print such an announcement, your work based on the Program is not required to print an announcement.)

These requirements apply to the modified work as a whole. If identifiable sections of that work are not derived from the Program, and can be reasonably considered independent and separate works in themselves, then this License, and its terms, do not apply to those sections when you distribute them as separate works. But when you distribute the same sections as part of a whole which is a work based on the Program, the distribution of the whole must be on the terms of this License, whose permissions for other licensees extend to the entire whole, and thus to each and every part regardless of who wrote it. Thus, it is not the intent of this section to claim rights or contest your rights to work written entirely by you; rather, the intent is to exercise the right to control the distribution of derivative or collective works based on the Program. In addition, mere aggregation of another work not based on the Program with the Program (or with a work based on the Program) on a volume of a storage or distribution medium does not bring the other work under the scope of this License.

3. You may copy and distribute the Program (or a work based on it, under Section 2) in object code or executable form under the terms of Sections 1 and 2 above provided that you also do one of the following:

a) Accompany it with the complete corresponding machine-readable source code, which must be distributed under the terms of Sections 1 and 2 above on a medium customarily used for software interchange; or,

b) Accompany it with a written offer, valid for at least three years, to give any third party, for a charge no more than your cost of physically performing source distribution, a complete machine-readable copy of the corresponding source code, to be distributed under the terms of Sections 1 and 2 above on a medium customarily used for software interchange; or,

c) Accompany it with the information you received as to the offer to distribute corresponding source code. (This alternative is allowed only for noncommercial distribution and only if you received the program in object code or executable form with such an offer, in accord with Subsection b above.)

The source code for a work means the preferred form of the work for making modifications to it. For an executable work, complete source code means all the source code for all modules it contains, plus any associated interface definition files, plus the scripts used to control compilation and installation of the executable. However, as a special exception, the source code distributed need not include

anything that is normally distributed (in either source or binary form) with the major components (compiler, kernel, and so on) of the operating system on which the executable runs, unless that component itself accompanies the executable.

If distribution of executable or object code is made by offering access to copy from a designated place, then offering equivalent access to copy the source code from the same place counts as distribution of the source code, even though third parties are not compelled to copy the source along with the object code.

4. You may not copy, modify, sublicense, or distribute the Program except as expressly provided under this License. Any attempt otherwise to copy, modify, sublicense or distribute the Program is void, and will automatically terminate your rights under this License. However, parties who have received copies, or rights, from you under this License will not have their licenses terminated so long as such parties remain in full compliance.

5. You are not required to accept this License, since you have not signed it. However, nothing else grants you permission to modify or distribute the Program or its derivative works. These actions are prohibited by law if you do not accept this License. Therefore, by modifying or distributing the Program (or any work based on the Program), you indicate your acceptance of this License to do so, and all its terms and conditions for copying, distributing or modifying the Program or works based on it.

6. Each time you redistribute the Program (or any work based on the Program), the recipient automatically receives a license from the original licensor to copy, distribute or modify the Program subject to these terms and



conditions. You may not impose any further restrictions on the recipients' exercise of the rights granted herein. You are not responsible for enforcing compliance by third parties to this License.

7. If, as a consequence of a court judgment or allegation of patent infringement or for any other reason (not limited to patent issues), conditions are imposed on you (whether by court order, agreement or otherwise) that contradict the conditions of this License, they do not excuse you from the conditions of this License. If you cannot distribute so as to satisfy simultaneously your obligations under this License and any other pertinent obligations, then as a consequence you may not distribute the Program at all. For example, if a patent license would not permit royalty-free redistribution of the Program by all those who receive copies directly or indirectly through you, then the only way you could satisfy both it and this License would be to refrain entirely from distribution of the Program.

If any portion of this section is held invalid or unenforceable under any particular circumstance, the balance of the section is intended to apply and the section as a whole is intended to apply in other circumstances.

It is not the purpose of this section to induce you to infringe any patents or other property right claims or to contest validity of any such claims; this section has the sole purpose of protecting the integrity of the free software distribution system, which is implemented by public license practices. Many people have made generous contributions to the wide range of software distributed through that system in reliance on consistent application of that system; it is up to the author/donor to decide if he or she is willing to distribute software through any other system and a licensee cannot impose that choice.

This section is intended to make thoroughly clear what is believed to be a consequence of the rest of this License.

8. If the distribution and/or use of the Program is restricted in certain countries either by patents or by copyrighted interfaces, the original copyright holder who places the Program under this License may add an explicit geographical distribution limitation excluding those countries, so that distribution is permitted only in or among countries not thus excluded. In such case, this License incorporates the limitation as if written in the body of this License.

9. The Free Software Foundation may publish revised and/or new versions of the General Public License from time to time. Such new versions will be similar in spirit to the present version, but may differ in detail to address new problems or concerns.

Each version is given a distinguishing version number. If the Program specifies a version number of this License which applies to it and "any later version", you have the option of following the terms and conditions either of that version or of any later version published by the Free Software Foundation. If the Program does not specify a version number of this License, you may choose any version ever published by the Free Software Foundation.

10. If you wish to incorporate parts of the Program into other free programs whose distribution conditions are different, write to the author to ask for permission. For software which is copyrighted by the Free Software Foundation, write to the Free Software Foundation; we sometimes make exceptions for this. Our decision will be guided by the two goals of preserving the free status of all derivatives of our free software and of promoting the sharing and reuse of software generally.

#### NO WARRANTY

11. BECAUSE THE PROGRAM IS LICENSED FREE OF CHARGE, THERE IS NO WARRANTY FOR THE PROGRAM, TO THE EXTENT PERMITTED BY APPLICABLE LAW. EXCEPT WHEN OTHERWISE STATED IN WRITING THE COPYRIGHT HOLDERS AND/OR OTHER PARTIES

PROVIDE THE PROGRAM "AS IS" WITHOUT WARRANTY OF ANY KIND, EITHER EXPRESSED OR IMPLIED, INCLUDING, BUT NOT LIMITED TO, THE IMPLIED WARRANTIES OF MERCHANTABILITY AND FITNESS FOR A PARTICULAR PURPOSE. THE ENTIRE RISK AS TO THE QUALITY AND PERFORMANCE OF THE PROGRAM IS WITH YOU. SHOULD THE PROGRAM PROVE DEFECTIVE, YOU ASSUME THE COST OF ALL NECESSARY SERVICING, REPAIR OR CORRECTION.

12. IN NO EVENT UNLESS REQUIRED BY APPLICABLE LAW OR AGREED TO IN WRITING WILL ANY COPYRIGHT HOLDER, OR ANY OTHER PARTY WHO MAY MODIFY AND/OR REDISTRIBUTE THE PROGRAM AS PERMITTED ABOVE, BE LIABLE TO YOU FOR DAMAGES, INCLUDING ANY GENERAL, SPECIAL, INCIDENTAL OR CONSEQUENTIAL DAMAGES ARISING OUT OF THE USE OR INABILITY TO USE THE PROGRAM (INCLUDING BUT NOT LIMITED

TO LOSS OF DATA OR DATA BEING RENDERED INACCURATE OR LOSSES SUSTAINED BY YOU OR THIRD PARTIES OR A FAILURE OF THE PROGRAM TO OPERATE WITH ANY OTHER PROGRAMS), EVEN IF SUCH HOLDER OR OTHER PARTY HAS BEEN ADVISED OF THE POSSIBILITY OF SUCH DAMAGES.

#### END OF TERMS AND CONDITIONS

## How to Apply These Terms to Your New Programs

If you develop a new program, and you want it to be of the greatest possible use to the public, the best way to achieve this is to make it free software which everyone can redistribute and change under these terms.

To do so, attach the following notices to the program. It is safest to attach them to the start of each source file to most effectively convey the exclusion of warranty; and each file should have at least the "copyright" line and a pointer to where the full notice is found.

<one line to give the program's name and a brief idea of what it does.>

Copyright (C) <year> <name of author>

This program is free software; you can redistribute it and/or modify it under the terms of the GNU General Public License as published by the Free Software Foundation; either version 2 of the License, or (at your option) any later version.

This program is distributed in the hope that it will be useful, but WITHOUT ANY WARRANTY; without even the implied warranty of MERCHANTABILITY or FITNESS FOR A PARTICULAR PURPOSE. See the GNU General Public License for more details.

You should have received a copy of the GNU General Public License along with this program; if not, write to the Free Software Foundation, Inc., 51 Franklin St, Fifth Floor, Boston, MA 02110-1301 USA

Also add information on how to contact you by electronic and paper mail.

If the program is interactive, make it output a short notice like this when it starts in an interactive mode:

Gnomovision version 69, Copyright (C) year name of author

Gnomovision comes with ABSOLUTELY NO WARRANTY; for details type `show w'.

This is free software, and you are welcome to redistribute it under certain conditions; type `show c' for details.

The hypothetical commands `show w' and `show c' should show the appropriate parts of the General Public License. Of course, the commands you use may be called something other than `show w' and `show c'; they could even be mouse-clicks or menu items--whatever suits your program.

You should also get your employer (if you work as a programmer) or your school, if any, to sign a "copyright disclaimer" for the program, if necessary. Here is a sample; alter the names:

Yoyodyne, Inc., hereby disclaims all copyright interest in the program `Gnomovision' (which makes passes at compilers) written by James Hacker.

<signature of Ty Coon>, 1 April 1989

Ty Coon, President of Vice

This General Public License does not permit incorporating your program into proprietary programs. If your program is a subroutine library, you may consider it more useful to permit linking proprietary applications with the library. If this is what you want to do, use the GNU Library General Public License instead of this License.

/-----/

GNU LESSER GENERAL PUBLIC LICENSE

Version 3, 29 June 2007

Copyright (C) 2007 Free Software Foundation, Inc. <<http://fsf.org/>>

Everyone is permitted to copy and distribute verbatim copies of this license document, but changing it is not allowed.

This version of the GNU Lesser General Public License incorporates the terms and conditions of version 3 of the GNU General Public License, supplemented by the additional permissions listed below.

0. Additional Definitions.

As used herein, "this License" refers to version 3 of the GNU Lesser General Public License, and the "GNU GPL" refers to version 3 of the GNU General Public License.

"The Library" refers to a covered work governed by this License, other than an Application or a Combined Work as defined below.

An "Application" is any work that makes use of an interface provided by the Library, but which is not otherwise based on the Library.

Defining a subclass of a class defined by the Library is deemed a mode of using an interface provided by the Library.

A "Combined Work" is a work produced by combining or linking an Application with the Library. The particular version of the Library with which the Combined Work was made is also called the "Linked Version".

The "Minimal Corresponding Source" for a Combined Work means the Corresponding Source for the Combined Work, excluding any source code for portions of the Combined Work that, considered in isolation, are based on the Application, and not on the Linked Version.

The "Corresponding Application Code" for a Combined Work means the object code and/or source code for the Application, including any data and utility programs needed for reproducing the Combined Work from the Application, but excluding the System Libraries of the Combined Work.

#### 1. Exception to Section 3 of the GNU GPL.

You may convey a covered work under sections 3 and 4 of this License without being bound by section 3 of the GNU GPL.

#### 2. Conveying Modified Versions.

If you modify a copy of the Library, and, in your modifications, a facility refers to a function or data to be supplied by an Application that uses the facility (other than as an argument passed when the facility is invoked), then you may convey a copy of the modified version:

a) under this License, provided that you make a good faith effort to ensure that, in the event an Application does not supply the function or data, the facility still operates, and performs whatever part of its purpose remains meaningful, or

b) under the GNU GPL, with none of the additional permissions of this License applicable to that copy.

#### 3. Object Code Incorporating Material from Library Header Files.

The object code form of an Application may incorporate material from a header file that is part of the Library. You may convey such object code under terms of your choice, provided that, if the incorporated material is not limited to numerical parameters, data structure layouts and accessors, or small macros, inline functions and templates (ten or fewer lines in length), you do both of the following:

a) Give prominent notice with each copy of the object code that the Library is used in it and that the Library and its use are covered by this License.

b) Accompany the object code with a copy of the GNU GPL and this license document.

#### 4. Combined Works.

You may convey a Combined Work under terms of your choice that, taken together, effectively do not restrict modification of the portions of the Library contained in the Combined Work and reverse engineering for debugging such modifications, if you also do each of the following:

a) Give prominent notice with each copy of the Combined Work that the Library is used in it and that the Library and its use are covered by this License.

b) Accompany the Combined Work with a copy of the GNU GPL and this license document.

c) For a Combined Work that displays copyright notices during execution, include the copyright notice for the Library among these notices, as well as a reference directing the user to the copies of the GNU GPL and this license document.

d) Do one of the following:

0) Convey the Minimal Corresponding Source under the terms of this License, and the Corresponding Application Code in a form suitable for, and under terms that permit, the user to recombine or relink the Application with a modified version of the Linked Version to produce a modified Combined Work, in the manner specified by section 6 of the GNU GPL for conveying Corresponding Source.

1) Use a suitable shared library mechanism for linking with the Library. A suitable mechanism is one that (a) uses at run time a copy of the Library already present on the user's computer system, and (b) will operate properly with a modified version of the Library that is interface-compatible with the Linked Version.

e) Provide Installation Information, but only if you would otherwise be required to provide such information under section 6 of the GNU GPL, and only to the extent that such information is necessary to install and execute a modified version of the Combined Work produced by recombining or relinking the Application with a modified version of the Linked Version. (If you use option 4d0, the Installation Information must accompany the Minimal Corresponding Source and Corresponding Application Code. If you use option 4dl, you must provide the Installation Information in the manner specified by section 6 of the GNU GPL for conveying Corresponding Source.)

## 5. Combined Libraries.

You may place library facilities that are a work based on the Library side by side in a single library together with other library facilities that are not Applications and are not covered by this License, and convey such a combined library under terms of your choice, if you do both of the following:

a) Accompany the combined library with a copy of the same work based on the Library, uncombined with any other library facilities, conveyed under the terms of this License.

b) Give prominent notice with the combined library that part of it is a work based on the Library, and explaining where to find the accompanying uncombined form of the same work.

## 6. Revised Versions of the GNU Lesser General Public License.

The Free Software Foundation may publish revised and/or new versions of the GNU Lesser General Public License from time to time. Such new versions will be similar in spirit to the present version, but may differ in detail to address new problems or concerns.

Each version is given a distinguishing version number. If the Library as you received it specifies that a certain numbered version of the GNU Lesser General Public License "or any later version" applies to it, you have the option of following the terms and conditions either of that published version or of any later version published by the Free Software Foundation. If the Library as you received it does not specify a version number of the GNU Lesser General Public License, you may choose any version of the GNU Lesser General Public License ever published by the Free Software Foundation.

If the Library as you received it specifies that a proxy can decide whether future versions of the GNU Lesser General Public License shall apply, that proxy's public statement of acceptance of any version is permanent authorization for you to choose that version for the Library.

/-----/

## OpenSSL License

/\* =====

Copyright (c) 1998-2011 The OpenSSL Project. All rights reserved.

\*

Redistribution and use in source and binary forms, with or without modification, are permitted provided that the following conditions are met:

1. Redistributions of source code must retain the above copyright notice, this list of conditions and the

following disclaimer.

2. Redistributions in binary form must reproduce the above copyright notice, this list of conditions and the following disclaimer in the documentation and/or other materials provided with the distribution.

3. All advertising materials mentioning features or use of this software must display the following acknowledgment:

"This product includes software developed by the OpenSSL Project for use in the OpenSSL Toolkit.  
(<http://www.openssl.org/>)"

4. The names "OpenSSL Toolkit" and "OpenSSL Project" must not be used to endorse or promote products derived from this software without prior written permission. For written permission, please contact [openssl-core@openssl.org](mailto:openssl-core@openssl.org).

5. Products derived from this software may not be called "OpenSSL" nor may "OpenSSL" appear in their names without prior written permission of the OpenSSL Project.

6. Redistributions of any form whatsoever must retain the following acknowledgment:

"This product includes software developed by the OpenSSL Project for use in the OpenSSL Toolkit  
(<http://www.openssl.org/>)"

THIS SOFTWARE IS PROVIDED BY THE OpenSSL PROJECT ``AS IS'' AND ANY EXPRESSED OR IMPLIED WARRANTIES, INCLUDING, BUT NOT LIMITED TO, THE IMPLIED WARRANTIES OF MERCHANTABILITY AND FITNESS FOR A PARTICULAR PURPOSE ARE DISCLAIMED. IN NO EVENT SHALL THE OpenSSL PROJECT OR ITS CONTRIBUTORS BE LIABLE FOR ANY DIRECT, INDIRECT, INCIDENTAL, SPECIAL, EXEMPLARY, OR CONSEQUENTIAL DAMAGES (INCLUDING, BUT NOT LIMITED TO, PROCUREMENT OF SUBSTITUTE GOODS OR SERVICES;

LOSS OF USE, DATA, OR PROFITS; OR BUSINESS INTERRUPTION) HOWEVER CAUSED AND ON ANY THEORY OF LIABILITY, WHETHER IN CONTRACT, STRICT LIABILITY, OR TORT (INCLUDING NEGLIGENCE OR OTHERWISE) ARISING IN ANY WAY OUT OF THE USE OF THIS SOFTWARE, EVEN IF ADVISED OF THE POSSIBILITY OF SUCH DAMAGE.

=====

This product includes cryptographic software written by Eric Young ([ey@cryptsoft.com](mailto:ey@cryptsoft.com)). This product includes software written by Tim Hudson ([tjh@cryptsoft.com](mailto:tjh@cryptsoft.com)).

Original SSLeay License

-----

Copyright (C) 1995-1998 Eric Young ([ey@cryptsoft.com](mailto:ey@cryptsoft.com))  
All rights reserved.

This package is an SSL implementation written by Eric Young ([ey@cryptsoft.com](mailto:ey@cryptsoft.com)).  
The implementation was written so as to conform with Netscapes SSL.

This library is free for commercial and non-commercial use as long as the following conditions are aheared to. The following conditions apply to all code found in this distribution, be it the RC4, RSA, lhash, DES, etc., code; not just the SSL code. The SSL documentation included with this distribution is covered by the same copyright terms except that the holder is Tim Hudson ([tjh@cryptsoft.com](mailto:tjh@cryptsoft.com)).

Copyright remains Eric Young's, and as such any Copyright notices in the code are not to be removed.

If this package is used in a product, Eric Young should be given attribution as the author of the parts of the library used.

This can be in the form of a textual message at program startup or in documentation (online or textual) provided with the package.

Redistribution and use in source and binary forms, with or without modification, are permitted provided that the following conditions are met:

1. Redistributions of source code must retain the copyright notice, this list of conditions and the following disclaimer.

2. Redistributions in binary form must reproduce the above copyright notice, this list of conditions and the following disclaimer in the documentation and/or other materials provided with the distribution.

3. All advertising materials mentioning features or use of this software must display the following acknowledgement:

"This product includes cryptographic software written by Eric Young ([ey@cryptsoft.com](mailto:ey@cryptsoft.com))" The word

'cryptographic' can be left out if the routines from the library being used are not cryptographic related :-).

4. If you include any Windows specific code (or a derivative thereof) from the apps directory (application code) you must include an acknowledgement:

"This product includes software written by Tim Hudson (tjh@cryptsoft.com)"

THIS SOFTWARE IS PROVIDED BY ERIC YOUNG ``AS IS'' AND ANY EXPRESS OR IMPLIED WARRANTIES, INCLUDING, BUT NOT LIMITED TO, THE IMPLIED WARRANTIES OF MERCHANTABILITY AND FITNESS FOR A PARTICULAR PURPOSE ARE DISCLAIMED. IN NO EVENT SHALL THE AUTHOR OR CONTRIBUTORS BE LIABLE FOR ANY DIRECT, INDIRECT, INCIDENTAL, SPECIAL, EXEMPLARY, OR CONSEQUENTIAL DAMAGES (INCLUDING, BUT NOT LIMITED TO, PROCUREMENT OF SUBSTITUTE GOODS OR SERVICES; LOSS OF USE, DATA, OR PROFITS; OR BUSINESS INTERRUPTION)

HOWEVER CAUSED AND ON ANY THEORY OF LIABILITY, WHETHER IN CONTRACT, STRICT LIABILITY, OR TORT (INCLUDING NEGLIGENCE OR OTHERWISE) ARISING IN ANY WAY OUT OF THE USE OF THIS SOFTWARE, EVEN IF ADVISED OF THE POSSIBILITY OF SUCH DAMAGE.

The licence and distribution terms for any publically available version or derivative of this code cannot be changed. i.e. this code cannot simply be copied and put under another distribution licence [including the GNU Public Licence.]

/-----/

Apache License  
Version 2.0, January 2004  
<http://www.apache.org/licenses/>

#### TERMS AND CONDITIONS FOR USE, REPRODUCTION, AND DISTRIBUTION

##### 1. Definitions.

"License" shall mean the terms and conditions for use, reproduction, and distribution as defined by Sections 1 through 9 of this document.

"Licensor" shall mean the copyright owner or entity authorized by the copyright owner that is granting the License.

"Legal Entity" shall mean the union of the acting entity and all other entities that control, are controlled by, or are under common control with that entity. For the purposes of this definition,

"control" means (i) the power, direct or indirect, to cause the direction or management of such entity, whether by contract or otherwise, or (ii) ownership of fifty percent (50%) or more of the outstanding shares, or (iii) beneficial ownership of such entity.

"You" (or "Your") shall mean an individual or Legal Entity exercising permissions granted by this License.

"Source" form shall mean the preferred form for making modifications, including but not limited to software source code, documentation source, and configuration files.

"Object" form shall mean any form resulting from mechanical transformation or translation of a Source form, including but not limited to compiled object code, generated documentation, and conversions to other media types.

"Work" shall mean the work of authorship, whether in Source or Object form, made available under the License, as indicated by a copyright notice that is included in or attached to the work (an example is provided in the Appendix below).

"Derivative Works" shall mean any work, whether in Source or Object form, that is based on (or derived from) the Work and for which the editorial revisions, annotations, elaborations, or other modifications represent, as a whole, an original work of authorship. For the purposes of this License, Derivative Works shall not include works that remain separable from, or merely link (or bind by name) to the interfaces of, the Work and Derivative Works thereof.

"Contribution" shall mean any work of authorship, including the original version of the Work and any modifications or additions to that Work or Derivative Works thereof, that is intentionally submitted to Licensor for inclusion in the Work by the copyright owner or by an individual or Legal Entity authorized to submit on behalf of the copyright owner. For the purposes of this definition, "submitted" means any form of electronic,

verbal, or written communication sent to the Licensor or its representatives, including but not limited to communication on electronic mailing lists, source code control systems, and issue tracking systems that are managed by, or on behalf of, the Licensor for the purpose of discussing and improving the Work, but excluding communication that is conspicuously marked or otherwise designated in writing by the copyright owner as "Not a Contribution."

"Contributor" shall mean Licensor and any individual or Legal Entity on behalf of whom a Contribution has been received by Licensor and subsequently incorporated within the Work.

2. Grant of Copyright License. Subject to the terms and conditions of this License, each Contributor hereby grants to You a perpetual, worldwide, non-exclusive, no-charge, royalty-free, irrevocable copyright license to reproduce, prepare Derivative Works of, publicly display, publicly perform, sublicense, and distribute the Work and such Derivative Works in Source or Object form.

3. Grant of Patent License. Subject to the terms and conditions of this License, each Contributor hereby grants to You a perpetual, worldwide, non-exclusive, no-charge, royalty-free, irrevocable (except as stated in this section) patent license to make, have made, use, offer to sell, sell, import, and otherwise transfer the Work, where such license applies only to those patent claims licensable by such Contributor that are necessarily infringed by their Contribution(s) alone or by combination of their Contribution(s) with the Work to which such Contribution(s) was submitted. If You institute patent litigation against any entity (including a cross-claim or counterclaim in a lawsuit) alleging that the Work or a Contribution incorporated within the Work constitutes direct or contributory patent infringement, then any patent licenses granted to You under this License for that Work shall terminate as of the date such litigation is filed.

4. Redistribution. You may reproduce and distribute copies of the Work or Derivative Works thereof in any medium, with or without modifications, and in Source or Object form, provided that You meet the following conditions:

- (a) You must give any other recipients of the Work or Derivative Works a copy of this License; and
- (b) You must cause any modified files to carry prominent notices stating that You changed the files; and
- (c) You must retain, in the Source form of any Derivative Works that You distribute, all copyright, patent, trademark, and attribution notices from the Source form of the Work, excluding those notices that do not pertain to any part of the Derivative Works; and
- (d) If the Work includes a "NOTICE" text file as part of its distribution, then any Derivative Works that You distribute must include a readable copy of the attribution notices contained within such NOTICE file, excluding those notices that do not pertain to any part of the Derivative Works, in at least one of the following places: within a NOTICE text file distributed as part of the Derivative Works; within the Source form or documentation, if provided along with the Derivative Works; or, within a display generated by the Derivative Works, if and wherever such third-party notices normally appear. The contents of the NOTICE file are for informational purposes only and do not modify the License. You may add Your own attribution notices within Derivative Works that You distribute, alongside or as an addendum to the NOTICE text from the Work, provided that such additional attribution notices cannot be construed as modifying the License.

You may add Your own copyright statement to Your modifications and may provide additional or different license terms and conditions for use, reproduction, or distribution of Your modifications, or for any such Derivative Works as a whole, provided Your use, reproduction, and distribution of the Work otherwise complies with the conditions stated in this License.

5. Submission of Contributions. Unless You explicitly state otherwise, any Contribution intentionally submitted for inclusion in the Work by You to the Licensor shall be under the terms and conditions of this License, without any additional terms or conditions. Notwithstanding the above, nothing herein shall supersede or modify the terms of any separate license agreement you may have executed with Licensor regarding such Contributions.

6. Trademarks. This License does not grant permission to use the trade names, trademarks, service marks, or product names of the Licensor, except as required for reasonable and customary use in describing the origin of the Work and reproducing the content of the NOTICE file.

7. Disclaimer of Warranty. Unless required by applicable law or agreed to in writing, Licensor provides the Work (and each Contributor provides its Contributions) on an "AS IS" BASIS, WITHOUT WARRANTIES OR CONDITIONS OF ANY KIND, either express or implied, including, without limitation, any warranties or conditions of TITLE, NON-INFRINGEMENT, MERCHANTABILITY, or FITNESS FOR A PARTICULAR PURPOSE. You are solely responsible for determining the

appropriateness of using or redistributing the Work and assume any risks associated with Your exercise of permissions under this License.

8. Limitation of Liability. In no event and under no legal theory, whether in tort (including negligence), contract, or otherwise, unless required by applicable law (such as deliberate and grossly negligent acts) or agreed to in writing, shall any Contributor be liable to You for damages, including any direct, indirect, special, incidental, or consequential damages of any character arising as a result of this License or out of the use or inability to use the Work (including but not limited to damages for loss of goodwill, work stoppage, computer failure or malfunction, or any and all other commercial damages or losses), even if such Contributor has been advised of the possibility of such damages.

9. Accepting Warranty or Additional Liability. While redistributing the Work or Derivative Works thereof, You may choose to offer, and charge a fee for, acceptance of support, warranty, indemnity, or other liability obligations and/or rights consistent with this License. However, in accepting such obligations, You may act only on Your own behalf and on Your sole responsibility, not on behalf of any other Contributor, and only if You agree to indemnify, defend, and hold each Contributor harmless for any liability incurred by, or claims asserted against, such Contributor by reason of your accepting any such warranty or additional liability.

END OF TERMS AND CONDITIONS

APPENDIX: How to apply the Apache License to your work.

To apply the Apache License to your work, attach the following boilerplate notice, with the fields enclosed by brackets "[]" replaced with your own identifying information. (Don't include the brackets!) The text should be enclosed in the appropriate comment syntax for the file format. We also recommend that a file or class name and description of purpose be included on the same "printed page" as the copyright notice for easier identification within third-party archives. Copyright [yyyy] [name of copyright owner]

Licensed under the Apache License, Version 2.0 (the "License"); you may not use this file except in compliance with the License. You may obtain a copy of the License at

<http://www.apache.org/licenses/LICENSE-2.0>

Unless required by applicable law or agreed to in writing, software distributed under the License is distributed on an "AS IS" BASIS, WITHOUT WARRANTIES OR CONDITIONS OF ANY KIND, either express or implied.

See the License for the specific language governing permissions and limitations under the License.

/-----/



**Hanwha Techwin** 在所有产品制造阶段呵护环境，并且采取措施为客户提供更加环境友好的产品。  
这个环保标志表示 **Hanwha Techwin** 致力于创造环境友好的产品，并且表明该产品符合欧盟 RoHS 指令。

#### **正确处置本产品**（废弃电气电子设备）

（适用于欧盟和其他欧洲国家的分类收集系统）

这标志着在产品，配件或文献表明，该产品及其电子配件（例如充电器，耳机，USB连接线）不应在其使用寿命结束所带来的与其他生活垃圾。顶端重新宣泄可能造成的伤害从非受控废弃物处理对环境或人体健康，请独立于其他类型的垃圾，这些物品和回收它们以促进材料资源的可持续再利用。家庭用户应该与他们购买本产品的零售商或当地政府部门联系，对于在何处以及如何可以把这些项目对环境安全回收的详细信息。商业用户应联系其供应商并检查购买合同的条款和条件。本产品及其电子配件不应与其他商业垃圾混合处置。

#### **正确处置本产品中的电池**

（适用于欧盟和其他欧洲国家的单独的电池回收系统）。

这标志着在电池，说明书或包装说明，在此产品中的电池不应该以自己的职业生涯的最后处理与其他生活垃圾。被标，化学符号汞，镉或铅表示电池中含有汞，镉或铅以上在欧盟指令2006/6的参考水平。如果电池不妥善处置，这些物质可能会导致危害人体健康或环境。为保护自然资源和促进材料的重复使用，请与其它类型的垃圾分开电池，并通过当地的免费电池回收系统回收利用。

---

**韩华商业设备(上海)有限公司**

Hanwha Techwin (Shanghai)

上海市桂平路391号新漕河泾国际商务中心B座32层

32F, Blk B, International Business Center, No. 391 Guiping Rd., Shanghai, China

联系电话：021.5427.1155

[www.hanwha-security.cn](http://www.hanwha-security.cn)

---

**天津三星泰科光电子有限公司**

Tianjin Samsung Techwin Opto-Electronics Co., Ltd.

天津市西青区津港公路微电子工业区微六路11号

No.11, wei 6 Road, Micro-Electronics Industrial Park, Xiqing Di strict, Tianjin, 300385, China

联系电话(免费客服热线)：800.818.1212 / 400.690.6677

[www.samsungsecurity.cn](http://www.samsungsecurity.cn)

---

