

Converter User Guide

How to convert data recorded in version SSM 2.00.2 of SSM Core Server to make it searchable in version SSM 2.10.1 or later

Table of Contents

About the User Guide.....	3
About Copyright.....	3
Summary.....	4
Before Getting Started.....	4
Get Started with the Program.....	5
Secure Free Space.....	5
Convert the Recording Data	6
Play the Recorded Video after Conversion.....	7

About the User Guide

This document is a user guide for **the Converter** program that converts data recorded in version SSM 1.60.6 / 2.00.2 to make it searchable in version SSM 2.10.1 or later.

- Please read this user guide before using the product to ensure correct usage.
- The information in this guide may vary, depending on the product's software upgrade and our policies, and is subject to change without notice to the user.

About Copyright

© 2018 Hanwha Techwin Co., Ltd. All rights reserved.

This user guide is copyrighted under copyright law.

You may not duplicate, transmit, distribute, translate, or change any part or all of the user guide to any electronic or machine-readable forms without the consent of Hanwha Techwin Co., Ltd.

Summary

Version SSM 2.10.1 has refined the structure of the recording data to improve recording and playback performance. When you upgrade from version SSM 1.60.6 / 2.00.2 to version SSM 2.10 or later, you cannot search or play the recording data from the previous version. To confirm the recording data from the previous version, use the **Converter** program to convert the recording data from the previous version to the recording data format of the latest version.

Before Getting Started

Prepare the following items to use the **Converter**.

1. Export recording data to a separate recording device before upgrading the SSM to prevent the loss of essential recording data.
2. Download the **Converter** program from the Hanwha Techwin homepage and copy it to the server where the **SSM Core Server** is installed.
3. In the **SSM Core Server**, secure free space in the remaining disks except for the system disk.
 - When you click the **Delete data** button in the **Converter** program, you can easily secure free space by deleting the data with the oldest recorded date. Export before deleting the data.
 - When there is not enough free space, the converted recording data can be overwritten due to insufficient recording space.
4. Upgrade from version SSM 1.60.6 / 2.00.2 to version SSM 2.10.1 or later.

NOTE

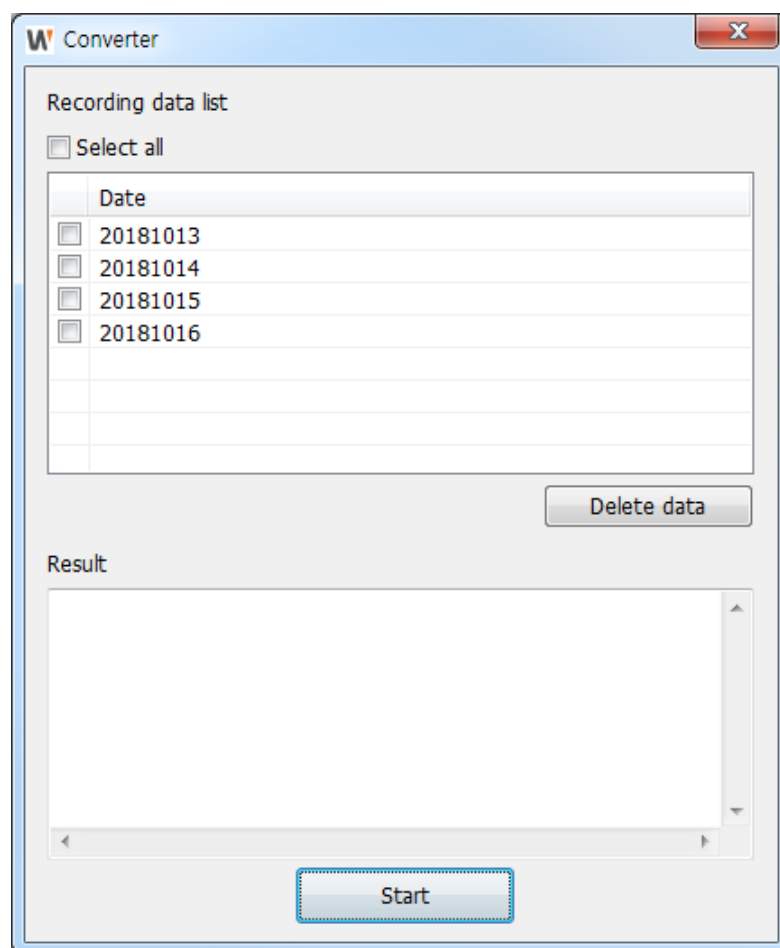
- The real-time video from the camera is recorded simultaneously during data conversion.
- It takes more than 10 days to convert 30 TB of recording data.
- Hanwha Techwin's homepage address is <https://www.hanwha-security.com>.
- If you upgrade from version SSM 1.60.6 or earlier to version SSM 2.10.1 or later, then recording data conversion is not supported.

Get Started with the Program

Run the **Converter** program.

1. In the server where the **SSM Core Server** is installed, go to the location where the **Converter** program is copied.
2. Double-click the **Converter** program.

The **Converter** program appears as follows:



NOTE

The dates shown in Date are based on UTC. Since Korea Standard Time is UTC +09:00, conversion will start from 9 hours after the selected date.

Secure Free Space

Secure enough free space on the disk before converting the recording data.

When you secure free space, it is recommended to delete the data with the oldest recorded date. However, if there is any essential data among the oldest data, then export it and keep it before deleting the oldest data.

1. Select the desired date from the **Date**.

- Click the **Delete data** button under the **Converter** program.

Regardless of the camera, only data recorded of the selected date is deleted.

NOTE

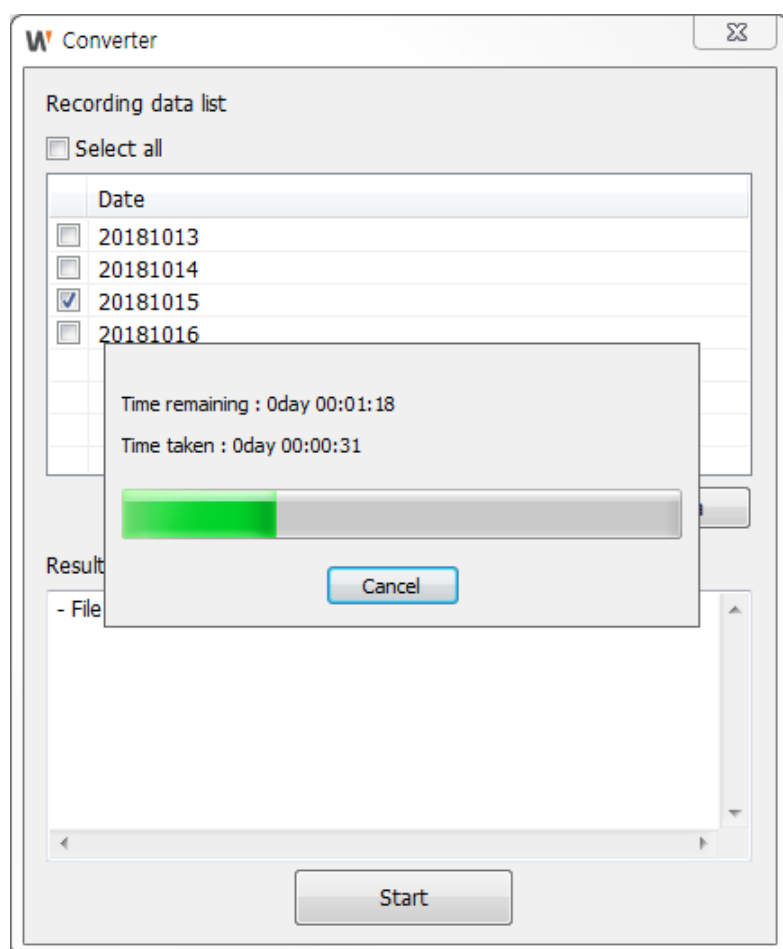
When there is not enough free space secured, data conversion may stop or the converted recording data may be overwritten.

Convert the Recording Data

Here, we will learn how to convert the recording data from version SSM 1.60.6 / 2.00.2 to the recording data of version SSM 2.10.1.

- Select the desired date from the **Date**. Click **Select all** to select all dates.
- Click the **Start** button. The recording data with the selected date is converted.

Time remaining and Time taken are displayed in the dialog box.



NOTE

- Click the **Cancel** button to stop the conversion.
- You can confirm records of the conversion process done on the recording data in the **R** **esult**.

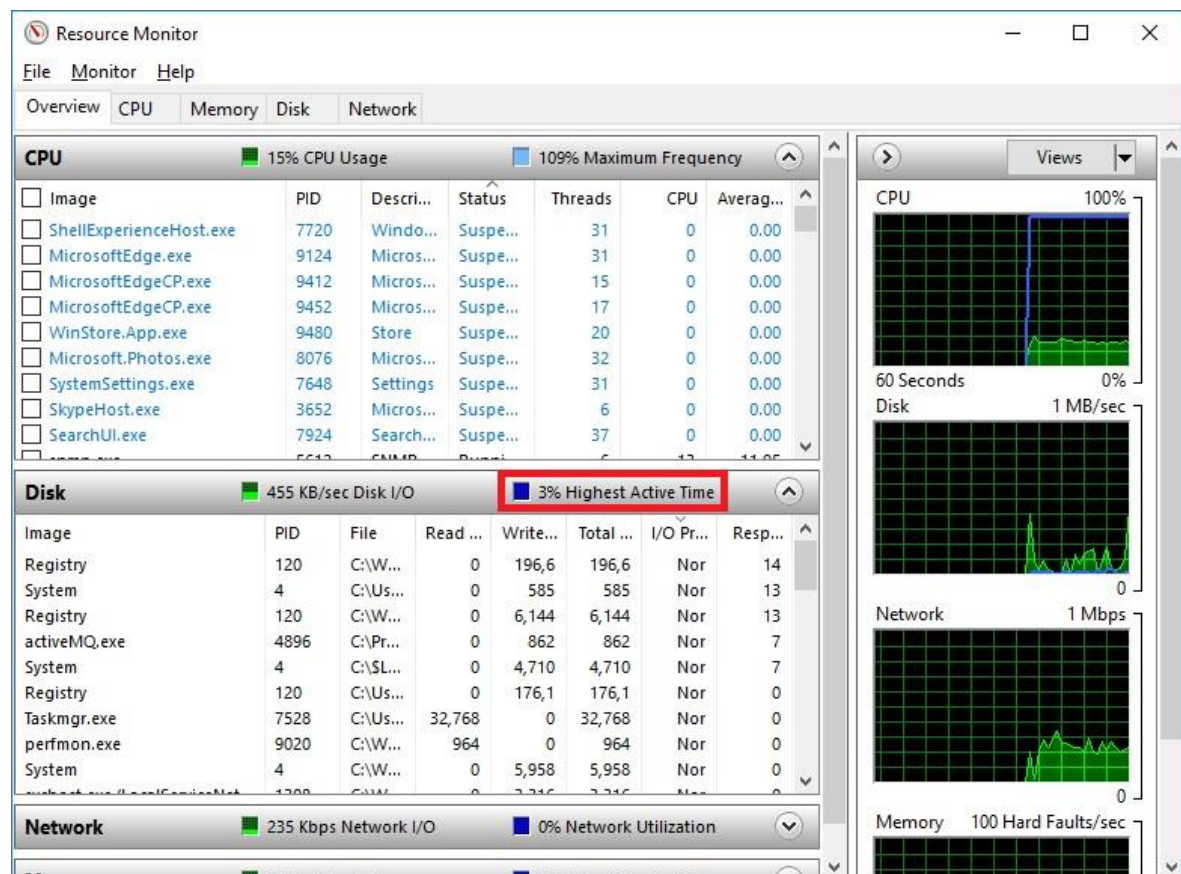
3. Check the disk performance in the resource monitor in task manager(performance tab).

If the Highest Active Time exceeds 60%, Converter performance adjustment is required.

You can adjust DELAY_TIME from 1 to 100 steps by opening the converter.ini file.

The larger the value, the slower the Converter conversion and the lower the Highest Active time.

When adjusting the step, Converter must be run again to apply.



Play the Recorded Video after Conversion

When you convert the data, you can search or play the recording data from the previous version in version SSM 2.10.1. For details, please refer to the **Wisenet SSM Console Client User Manual**.



Hanwha Techwin Co.,Ltd.

Head Office

6, Pangyo-ro 319 beon-gil, Bundang-gu, Seongnam-si,
Gyeonggi-do, 463-400 Rep. of KOREA

Tel : +82.70.7147.8753 Fax : +82.31.8018.3740

www.hanwha-security.com

Hanwha Techwin America

500 Frank W. Burr Blvd. Suite 43 Teaneck, NJ 07666

Toll Free +1.877.213.1222 Direct +1.201.325.6920

Fax +1.201.373.0124

www.hanwha-security.com

Hanwha Techwin Europe

Heriot House, Heriot Road, Chertsey, Surrey, KT16 9DT, United Kingdom

Tel +44.1932.57.8100 Fax +44.1932.57.8101

www.hanwha-security.eu

