



EMC TEST REPORT For VCCI

Test Report No. : KES-E1-19T0140

Date of Issue : Mar. 06, 2019

Product name : Network Camera

Model/Type No. : XNP-6320RH

Variant Model : XNP-6250RH

Applicant : Hanwha Techwin Co., Ltd.

Applicant Address : 6, Pangyo-ro 319 Beon-gil, Bundang-gu, Seongnam-si,
Gyeonggi-do, 13488, KOREA

Manufacturer : 1. Hanwha Techwin (Tianjin) Co.,Ltd.
2. HANWHA TECHWIN SECURITY VIETNAM CO.,LTD.
3. D-TECH CO.,LTD.

Manufacturer Address : 1. No.11 Weiliu Rd, Micro-Electronic Industrial Park, TEDA, Tianjin,
300385, People's Republic of China
2. Lot O-2, Que Vo Industrial Zone extended area,
Nam Son commune, Bac Ninh city, Bac Ninh province, Vietnam
3. 173-25, Saneop-ro, Gwonseon-gu, Suwon-si, Gyeonggi-do,
Korea (Suwon Industrial Complex)

Date of Receipt : Feb. 20, 2019

Test date : Mar. 02, 2019 ~ Mar. 03, 2019

Test Results : ☒ In Compliance ☐ Not in Compliance

Tested by

Min Seong, Kim
EMC Test Engineer

Reviewed by

Dong-Hun, Jang
EMC Technical Manager

This test report is not related to KOLAS.

**KES Co., Ltd.**

3701, 40, Simin-daero 365beon-gil,
Dongan-gu, Anyang-si, Gyeonggi-do, 14057, Korea
Tel: +82-31-425-6200 / Fax: +82-31-424-0450
www.kes.co.kr

Report No.:
KES-E1-19T0140
Page (2) of (47)

REPORT REVISION HISTORY

Date	Test Report No.	Revision History
Mar. 06, 2019	KES-E1-19T0140	Issued

This report shall not be reproduced except in full, without the written approval of KES Co., Ltd. This document may be altered or revised by KES Co., Ltd. personnel only, and shall be noted in the revision section of the document. Any alteration of this document not carried out by KES Co., Ltd. will constitute fraud and shall nullify the document.

This report shall not be reproduced except in full, without the written approval of KES Co., Ltd.
The results shown in this test report refer only to the sample(s) tested unless otherwise stated.
The authenticity of the test report, contact shchoi@kes.co.kr



TABLE OF CONTENTS

1.0	General Product Description.....	4
1.1	Test Voltage & Frequency	7
1.2	Variant Model Differences	7
1.3	Device Modifications	7
1.4	Equipment Under Test.....	7
1.5	Support Equipments	8
1.6	External I/O Cabling	9
1.7	EUT Operating Mode(s)	10
1.8	Configuration.....	10
1.9	Remarks when standards applied	11
1.10	Calibration Details of Equipment Used for Measurement	11
1.11	Test Facility	11
1.12	Laboratory Accreditations and Listings	11
2.0	Test Regulations.....	12
2.1	Conducted Emissions Mains Power Ports.....	14
2.2	Conducted Emissions at Telecommunication Ports.....	15
2.3	Radiated Electric Field Emissions(Below 1 GHz)	16
2.4	Radiated Electric Field Emissions(Above 1 GHz)	17
APPENDIX A – TEST DATA.....		18
Conducted Emissions at Mains Power Ports.....		18
Conducted Emissions at Telecommunication Ports		22
Radiated Electric Field Emissions(Below 1 GHz)		26
Radiated Electric Field Emissions(Above 1 GHz)		28
Test Setup Photos and Configuration		30
Conducted Voltage Emissions		30
Conducted Telecommunication Emissions		31
Radiated Electric Field Emissions(Below 1 GHz)		32
Radiated Electric Field Emissions(Above 1 GHz)		33
EUT External Photographs.....		34
EUT Internal Photographs		35



KES Co., Ltd.

3701, 40, Simin-daero 365beon-gil,
Dongan-gu, Anyang-si, Gyeonggi-do, 14057, Korea
Tel: +82-31-425-6200 / Fax: +82-31-424-0450
www.kes.co.kr

Report No.:
KES-EI-19T0140
Page (4) of (47)

1.0 General Product Description

Main Specifications of EUT are:

Video	
Imaging Device	1/2.8" 2MP CMOS
Effective Pixels	1944(H)x1212(V)
NETD	None
Pixel Size	None
Min. Illumination	Color: 0.05Lux(F1.6, 1/30sec) BW: 0Lux(IR LED On)
Video Out	CVBS: 1.0 Vp-p / 75Ω composite, 720x480(N), 720x576(P) for installation
Lens	
Focal Length (Zoom Ratio)	4.44~111mm(25x) 줌 렌즈
Max. Aperture Ratio	F1.6(Wide)~F3.9(Tele)
Angular Field of View	H: 61.8°(Wide)~2.84°(Tele) / V: 36.2°(Wide)~1.60°(Tele)
Min. Object Distance	Wide: 1.5m(4.92ft), Tele: 2m(6.56ft)
Focus Control	Oneshot AF
Lens Type	DC auto iris
Mount Type	None
Optional Lens	None
Pan / Tilt / Rotate	
Pan / Tilt / Rotate Range	None
Pan Range	360° Endless
Pan Speed	Preset: 400°/sec, Manual: 0.024°/sec~250°/sec
Tilt Range	95°(-5°~90°)
Tilt Speed	Preset: 250°/sec, Manual: 0.024°/sec~250°/sec
Rotate Range	None
Sequence	Preset(300ea), Swing, Group(6ea), Trace, Tour, Auto Run, Schedule
Preset Accuracy	±0.2°
Azimuth	Support
Auto Tracking	Support
Operational	
IR Viewable Length	200m(656.17ft)
Camera Title	Displayed up to 85 characters
Day & Night	Auto(ICR)
Backlight Compensation	BLC, HLC, WDR, SSDR
Wide Dynamic Range	150dB
Digital Noise Reduction	SSNRV
Digital Image Stabilization	Support(built-in gyro sensor)
Defog	Support
Motion Detection	8ea, 8point polygonal zones
Privacy Masking	32ea, rectangular Support - Color: Grey/Green/Red/Blue/Black/White - Mosaic
Gain Control	Low / Middle / High
White Balance	ATW / AWC / Manual / Indoor / Outdoor
LDC	None

This report shall not be reproduced except in full, without the written approval of KES Co., Ltd.
The results shown in this test report refer only to the sample(s) tested unless otherwise stated.
The authenticity of the test report, contact shchoi@kes.co.kr



KES Co., Ltd.

3701, 40, Simin-daero 365beon-gil,
Dongan-gu, Anyang-si, Gyeonggi-do, 14057, Korea
Tel: +82-31-425-6200 / Fax: +82-31-424-0450
www.kes.co.kr

Report No.:

KES-EI-19T0140

Page (5) of (47)

Electronic Shutter Speed	Minimum / Maximum / Anti flicker (2~1/12,000sec)
Digital PTZ	None
Video Rotation	Flip, Mirror
Analytics	Directional detection, Fog detection, Face detection, Motion detection, Appear/Disappear, Enter/Exit, Loitering, Tampering, Virtual line, Audio detection, Sound classification, Shock detection
Business Intelligence	None
Serial Interface	RS-485(Samsung-T, Pelco-D/P, Panasonic, Bosch, AD, GE, Vicon, Honeywell)
Alarm I/O	Input 4ea / Output 2ea
Alarm Triggers	Analytics, Network disconnect, Alarm input
Alarm Events	File upload via FTP and e-mail Notification via e-mail SD/SDHC/SDXC or NAS recording at event triggers Alarm output PTZ Preset
Audio In	Selectable(mic in/line in) Supply voltage: 2.5VDC(4mA), Input impedance: 2K Ohm
Audio Out	Line out, Max.output level: 1Vrms
IR Illuminator (Optional)	None
Wiper	None
Coaxial Protocol	None
Video Transmission Distance	None
Radiometry	
Temperature detect range	None
Temperature accuracy	None
Temperature detection	None
Additional	None
Network	
Ethernet	RJ-45(10/100BASE-T), SFP(Optional)
Video Compression	H.265/H.264,MJPEG
Resolution	1920x1080, 1280x1024, 1280x960, 1280x720, 1024x768, 800x600, 800x448, 720x576, 720x480, 640x480, 640x360, 320x240
Max. Framerate	H.265/H.264: Max. 60fps/50fps(60Hz/50Hz) MJPEG: Max. 30fps/25fps(60Hz/50Hz)
Smart Codec	Manual(5ea area), WiseStreamII
Video Quality Adjustment	H.264/H.265: Target bitrate level control MJPEG: Target bitrate level control
Bitrate Control	H.264/H.265: CBR or VBR MJPEG: VBR
Streaming	Unicast(20 users) / Multicast (128 user) Multiple streaming(Up to 10 profiles)
Audio Compression	G.711 u-law /G.726 Selectable G.726(ADPCM) 8KHz, G.711 8KHz G.726: 16Kbps, 24Kbps, 32Kbps, 40Kbps AAC-LC: 48Kbps at 16KHz

This report shall not be reproduced except in full, without the written approval of KES Co., Ltd.
The results shown in this test report refer only to the sample(s) tested unless otherwise stated.
The authenticity of the test report, contact shchoi@kes.co.kr



KES Co., Ltd.

3701, 40, Simin-daero 365beon-gil,
Dongan-gu, Anyang-si, Gyeonggi-do, 14057, Korea
Tel: +82-31-425-6200 / Fax: +82-31-424-0450
www.kes.co.kr

Report No.:
KES-EI-19T0140
Page (6) of (47)

Protocol	IPv4, IPv6, TCP/IP, UDP/IP, RTP(UDP), RTP(TCP), RTCP, RTSP, NTP, HTTP, HTTPS, SSL/TLS, DHCP, FTP, SMTP, ICMP, IGMP, SNMPv1/v2c/v3(MIB-2), ARP, DNS, DDNS, QoS, PIM-SM, UPnP, Bonjour, LLDP, SRTP
Security	HTTPS(SSL) Login Authentication Digest Login Authentication IP Address Filtering User access log 802.1X Authentication(EAP-TLS, EAP-LEAP)
Edge Storage	Micro SD/SDHC/SDXC 2slot 512GB
Application Programming In	ONVIF Profile S/G/T SUNAPI(HTTP API) Wisenet open platform
Webpage Language	English, Korean, Chinese, French, Italian, Spanish, German, Japanese, Russian, Swedish,, Portuguese, Czech, Polish, Turkish, Dutch, Hungarian, Greek
Web Viewer	Supported OS: Windows 7, 8.1, 10, Mac OS X 10.10, 10.11, 10.12 Recommended Browser: Google Chrome Supported Browser: MS Explore11, MS Edge, Mozilla Firefox(Window 64bit only), Apple Safari(Mac OS X only)
Memory	1024MB RAM, 256MB Flash
Environmental	
Operating Temperature / Humidity	24VAC : -50°C~+55°C (-58°F ~ +131°F) / Less than 90% RH HPoE : -40°C~+55°C (-40°F ~ +131°F) / Less than 90% RH * Start up should be done at above -35°C
Storage Temperature / Humidity	-50°C~+60°C (-58°F~+140°F) / Less than 90% RH
Certification	IP66, IK10
Electrical	
Input Voltage	24VAC, HPoE(IEEE802.3bt, Class7)
Power Consumption	24VAC: Max. 83W (typical : 30W) HPoE : Max. 51W (typical : 30W)
Mechanical	
Color / Material	Body: Ivory / Plastic, Head: Black / Plastic
RAL Code	None
Product dimensions / weight	Ø236.9x407.7mm(9.33x16.05"), 6.8Kg(14.99 lb)
Conduit hole	None
Hanging mount(Dome)	SBP-303HF(SFP)
Skin cover(Dome)	None
Weather cap(Dome)	None
Power module	None
Backbox	None

This report shall not be reproduced except in full, without the written approval of KES Co., Ltd.
The results shown in this test report refer only to the sample(s) tested unless otherwise stated.
The authenticity of the test report, contact shchoi@kes.co.kr



1.1 Test Voltage & Frequency

Unless indicated otherwise on the individual data sheet or test results, the test voltage and frequency was as indicated below.

Voltage ☐ 230 Vac ☒ 100 Vac ☒ 24 Vac ☐ 12 Vdc ☐ PoE

Frequency ☐ 50 Hz ☒ 60 Hz ☐ Hz

1.2 Variant Model Differences

Added a simple derivative model for classification by vendor

1.3 Device Modifications

Not applicable

1.4 Equipment Under Test

Description	Model Number	Serial Number	Manufacturer	Remarks
Network Camera	XNP-6320RH	-	Hanwha Techwin (Tianjin) Co.,Ltd.	EUT
PoE Adapter	PT-PSE109GBRO-AH	-	Dongguan PROCET Network Technology Co.,Ltd	

**KES Co., Ltd.**

3701, 40, Simin-daero 365beon-gil,
Dongan-gu, Anyang-si, Gyeonggi-do, 14057, Korea
Tel: +82-31-425-6200 / Fax: +82-31-424-0450
www.kes.co.kr

Report No.:

KES-EI-19T0140

Page (8) of (47)

1.5 Support Equipments

Description	Model Number	Serial Number	Manufacturer	Remarks
Notebook	NT500R5M	0Q7491AJ800552B	Samsung Electronics Co., Ltd.	-
Notebook Adapter	A13-040N2A	AD-4019C	Chicony Power Technology Co., Ltd.	-
Speaker	BR1000A Cuve Black 2	-	DONGGUAN EDIFIER TECHNOLOGY Co., Ltd	-
MIC	MP1000	-	-	-
Alarm	SIP-1201DD D0	-	SAMSUNG TECHWIN CO., LTD.	-
Button Alarm	-	-	-	-
Controller	SPC-1010	C60E67WD601003	SamSung Techwin Co.,Ltd.	-
Controller Adapter	RS-AB1000	-	Dongguan Jinhua Sheng Power Technology Co.,Ltd.	-
Micro SD Card	-	-	SanDisk	4 GB
Smart Phone	A1303	-	APPLE .Inc	-

This report shall not be reproduced except in full, without the written approval of KES Co., Ltd.
The results shown in this test report refer only to the sample(s) tested unless otherwise stated.
The authenticity of the test report, contact shchoi@kes.co.kr

1.6 External I/O Cabling

■ AC 24 V

Start		END		Cable Spec.	
Description	I / O Port	Description	I / O Port	Length	Shield
Network Camera (EUT)	RJ-45	Notebook	RJ-45	3.5	U
	3.5 mm	Speaker	3.5 mm	1.4	U
	3.5 mm	MIC	XLR	1.4	U
	2 Pin	Alarm	Line-In	3.0	U
	2 Pin	Button Alarm	Line-Out	3.0	U
	2 Pin	Controller	2 Pin	3.0	U
	SLOT	Micro SD Card	SLOT	-	-
Notebook	3.5 mm	Smart Phone	3.5 mm	1.0	U

* Unshielded=U, Shielded=S

■ PoE

Start		END		Cable Spec.	
Description	I / O Port	Description	I / O Port	Length	Shield
Network Camera (EUT)	RJ-45 (PoE)	PoE Adaptor	RJ-45 (PoE)	2.5	U
	3.5 mm	Speaker	3.5 mm	1.4	U
	3.5 mm	MIC	XLR	1.4	U
	2 Pin	Alarm	Line-In	3.0	U
	2 Pin	Button Alarm	Line-Out	3.0	U
	2 Pin	Controller	2 Pin	3.0	U
	SLOT	Micro SD Card	SLOT	-	-
Notebook	3.5 mm	Smart Phone	3.5 mm	1.0	U
	RJ-45 (DATA)	PoE Adaptor	RJ-45 (DATA)	3.5	U

* Unshielded=U, Shielded=S

1.7 EUT Operating Mode(s)

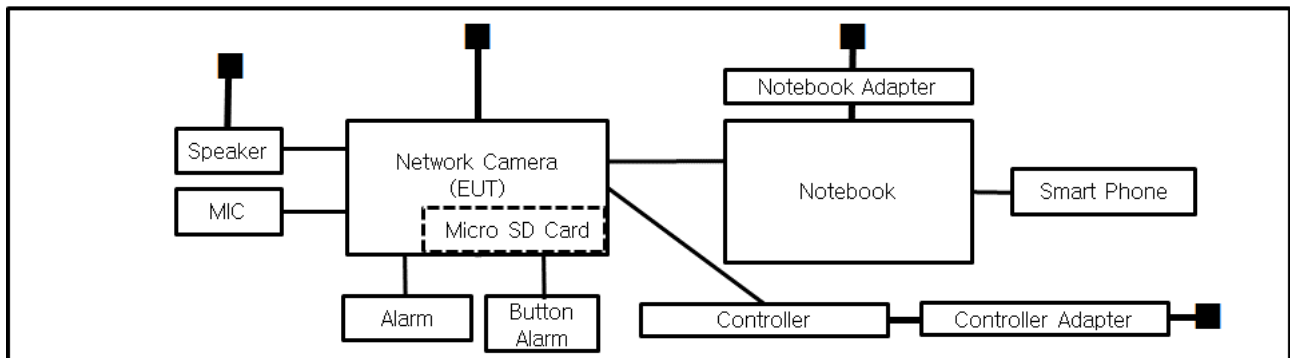
Test mode	operating
AC 24 V	EUT Monitoring, Ping Test
PoE	EUT Monitoring, Ping Test

EUT Test operating S/W		
Name	Version	Manufacture Company
WebView	-	Hanwha Techwin Co., Ltd.

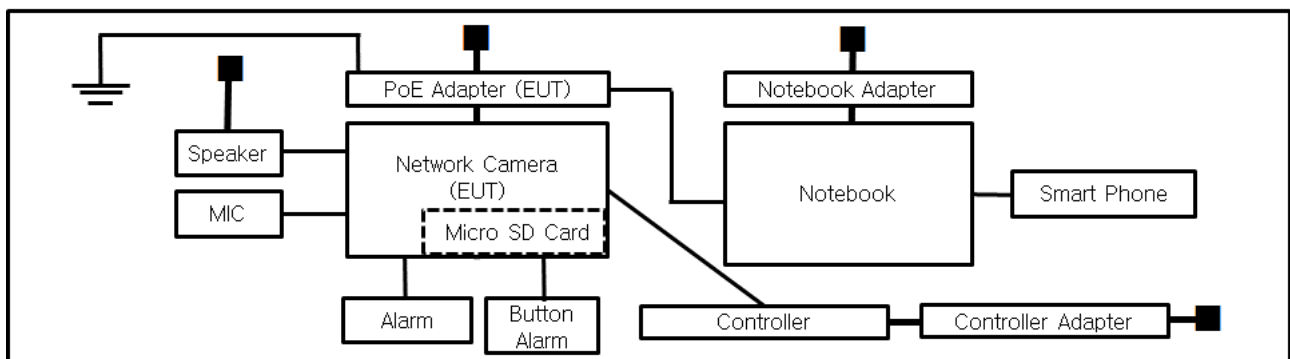
1.8 Configuration

■ AC Main
 □ DC Main

■ AC 24 V



■ PoE



1.9 Remarks when standards applied

N/A

1.10 Calibration Details of Equipment Used for Measurement

Test equipment and test accessories are calibrated on regular basis. The maximum time between calibrations is one year or what is recommended by the manufacturer, whichever is less.

1.11 Test Facility

The measurement facility is located at 473-21 Gayeo-ro, Yeosu-si, Gyeonggi-do, 12658, Korea. The sites are constructed in conformance with the requirements of ANSI C63.4: 2014 and CISPR 16-1-4: 2012

1.12 Laboratory Accreditations and Listings

Country	Agency	Scope of Accreditation	Logo
KOREA	RRA	EMI (3 m & 10 m Semi-Anechoic Chamber , 10 m Open Area and conducted test site) EMS (ESD, RS, EFT/Burst, Surge, CS, Magnetic, Dips and interruptions)	 KR0100
International	KOLAS	EMI (3 m & 10 m Semi-Anechoic Chamber , and conducted test site) EMS (ESD, RS, EFT/Burst, Surge, CS, Magnetic, Dips and interruptions)	 KT489
USA	FCC	3 m & 10 m Semi-Anechoic Chamber, 10 m Open Area and Conducted test site to perform FCC Part 15/18 measurements.	 KR0100
Canada	ISED	3 m & 10 m Semi-Anechoic Chamber and Conducted test site	 23298-1
JAPAN	VCCI	Mains Ports Conducted Interference Measurement, Telecommunication Ports Conducted Disturbance Measurement and Radiation 10 meter site, Facility for measuring radiated disturbance above 1 GHz	 R-4308, C-4798, T-2311, G-914
Europe	TÜV SÜD	EMI (3 m & 10 m Semi-Anechoic Chamber , 10 m Open Area and conducted test site) EMS (ESD, RS, EFT/Burst, Surge, CS, Magnetic, Dips and interruptions)	 CARAT 17 07 01633 001

2.0 Test Regulations

The emissions tests were performed according to following regulations:

☐ EMC – Directive 2014/30/EU

☐ EN 61000-6-3: 2011

☐ EN 61000-6-1: 2007

☐ EN 61000-6-4: 2007 +A1: 2011

☐ EN 61000-6-2: 2005

☐ EN 55011: 2007 +A1: 2010

☐ Group 1
☐ Class A

☐ Group 2
☐ Class B

☐ EN 55014-1: 2006 +A2: 2011

☐ EN 55014-2: 1997 +A2: 2008

☐ EN 55015: 2013

☐ EN 61547 : 2009

☐ EN 55032: 2015

☐ Class A

☐ Class B

☐ EN 55024: 2010 +A1: 2015

☐ EN 50130-4: 2011 +A1: 2014

☐ EN 61000-3-2: 2014

☐ EN 61000-3-3: 2013

☐ EN 61326-1: 2013



KES Co., Ltd.

3701, 40, Simin-daero 365beon-gil,
Dongan-gu, Anyang-si, Gyeonggi-do, 14057, Korea
Tel: +82-31-425-6200 / Fax: +82-31-424-0450
www.kes.co.kr

Report No.:

KES-E1-19T0140

Page (13) of (47)

-
- | | | |
|--|---|----------------------------------|
| <input checked="" type="checkbox"/> VCCI - CISPR 32:2016 | <input checked="" type="checkbox"/> Class A | <input type="checkbox"/> Class B |
| <input type="checkbox"/> AS/NZS CISPR32:2015 | <input type="checkbox"/> Class A | <input type="checkbox"/> Class B |
| <input type="checkbox"/> 47 CFR Part 15, Subpart B | | |
| <input type="checkbox"/> CISPR 22:2009 +A1:2010 | <input type="checkbox"/> Class A | <input type="checkbox"/> Class B |
| <input type="checkbox"/> ANSI C63.4-2009 | | |
| <input type="checkbox"/> IC Regulation ICES-003 : 2016 | | |
| <input type="checkbox"/> CAN/CSA CISPR 22-10 | <input type="checkbox"/> Class A | <input type="checkbox"/> Class B |
| <input type="checkbox"/> ANSI C63.4-2014 | | |
|
 | | |
| <input type="checkbox"/> RE- Directive 2014/53/EU | | |
|
 | | |
| <input type="checkbox"/> EN 301 489-1 V1.9.2 | | |
| <input type="checkbox"/> Equipment for fixed use | | |
| <input type="checkbox"/> Equipment for vehicular use | | |
| <input type="checkbox"/> Equipment for portable use | | |
| <input type="checkbox"/> EN 301 489-3 V1.6.1 | | |
| <input type="checkbox"/> EN 301 489-17 V2.2.1 | | |
| <input type="checkbox"/> EN 60945:2002 | | |

This report shall not be reproduced except in full, without the written approval of KES Co., Ltd.
The results shown in this test report refer only to the sample(s) tested unless otherwise stated.
The authenticity of the test report, contact shchoi@kes.co.kr



2.1 Conducted Emissions Mains Power Ports

Test Date

Mar. 03, 2019

Test Location

Electro wave Shieldroom #6

Test Equipment

Used	Description	Model Number	Manufacturer	Serial Number	Cal. Due
<input checked="" type="checkbox"/>	EMI Test S/W	EMC32	R & S	9.12.00	-
<input checked="" type="checkbox"/>	EMI TEST RECEIVER	ESR3	R & S	101781	04, 25, 2019
<input checked="" type="checkbox"/>	LISN	ENV216	R & S	101787	01, 04, 2020
<input checked="" type="checkbox"/>	LISN	ESH2-Z5	R & S	100450	04, 25, 2019
<input checked="" type="checkbox"/>	PULSE LIMITER	ESH3-Z2	R & S	101915	11, 26, 2019

Test Conditions

Temperature: 21,4 °C

Relative Humidity: 42,5 % R.H.

Frequency Range of Measurement

150 kHz to 30 MHz

Instrument Settings

IF Band Width: 9 kHz

Test Results

The requirements are:

- ☒ PASS
☐ NOT PASS
☐ NOT APPLICABLE

Remarks

See Appendix A for test data.

2.2 Conducted Emissions at Telecommunication Ports

Test Date

Mar. 03, 2019

Test Location

Electro wave Shieldroom #6

Test Equipment

Used	Description	Model Number	Manufacturer	Serial Number	Cal. Due
<input checked="" type="checkbox"/>	EMI Test S/W	EMC32	R & S	9.12.00	-
<input checked="" type="checkbox"/>	EMI TEST RECEIVER	ESR3	R & S	101781	04, 25, 2019
<input checked="" type="checkbox"/>	LISN	ENV216	R & S	101787	01, 04, 2020
<input checked="" type="checkbox"/>	LISN	ESH2-Z5	R & S	100450	04, 25, 2019
<input checked="" type="checkbox"/>	PULSE LIMITER	ESH3-Z2	R & S	101915	11, 26, 2019
<input checked="" type="checkbox"/>	8-WIRE ISN CAT3,5	ENY81	R & S	100174	01, 07, 2020

Test Conditions

Temperature: 21,4 °C

Relative Humidity: 42,5 % R.H.

Frequency Range of Measurement

150 kHz to 30 MHz

Instrument Settings

IF Band Width: 9 kHz

Test Results

The requirements are:

- ☒ PASS
☐ NOT PASS
☐ NOT APPLICABLE

Remarks

See Appendix A for test data.

2.3 Radiated Electric Field Emissions(Below 1 GHz)

Test Date
Mar. 02, 2019

Test Location
☐ OPEN AREA TEST SITE #2 ☒ SEMI ANECHOIC CHAMBER #4(10m)

Test Equipment

Used	Description	Model Number	Manufacturer	Serial Number	Cal. Due
<input checked="" type="checkbox"/>	EMI Test S/W	EP5/RE	TOYO Corporation	6.0.0	-
<input checked="" type="checkbox"/>	EMI TEST RECEIVER	ESU26	R & S	100551	04, 11, 2019
<input checked="" type="checkbox"/>	AMPLIFIER	SCU 01	R & S	100603	11, 26, 2019
<input checked="" type="checkbox"/>	ATTENUATOR	8491A	HP	32173	03, 21, 2019
<input checked="" type="checkbox"/>	TRILOG-BROADBAND ANTENNA	VULB9163	Schwarzbeck	715	11, 29, 2020

Test Conditions
Temperature: 21,8 °C
Relative Humidity: 40,9 % R.H.

Frequency Range of Measurement
30 MHz to 1 GHz

Instrument Settings
IF Band Width: 120 kHz

Test Results
The requirements are:

☒ PASS
☐ NOT PASS
☐ NOT APPLICABLE

Remarks
See Appendix A for test data.



2.4 Radiated Electric Field Emissions(Above 1 GHz)

Test Date
Mar. 02, 2019

Test Location
SEMI ANECHOIC CHAMBER #3

Test Equipment

Used	Description	Model Number	Manufacturer	Serial Number	Cal. Due
<input checked="" type="checkbox"/>	EMI Test S/W	EP5/RE	TOYO Corporation	6.0.0	-
<input checked="" type="checkbox"/>	EMI TEST RECEIVER	ESR7	R & S	101190	08, 06, 2019
<input checked="" type="checkbox"/>	PREAMPLIFIER	8449B	AGILENT	3008A01967	05, 31, 2019
<input type="checkbox"/>	ATTENUATOR	8491A	HP	35496	03, 21, 2019
<input checked="" type="checkbox"/>	DOUBLE RIDGED HORN ANTENNA	SAS-571	A.H.SYSTEM,INC	781	05, 02, 2019

Test Conditions
Temperature: 22,6 °C
Relative Humidity: 41,7 % R.H.

Frequency Range of Measurement
1 GHz to 6 GHz

Instrument Settings
IF Band Width: 1 MHz

Test Results
The requirements are:

☒ PASS
☐ NOT PASS
☐ NOT APPLICABLE

Remarks
See Appendix A for test data.

APPENDIX A – TEST DATA

Conducted Emissions at Mains Power Ports

■ AC 24 V

HOT LINE

Common Information

Test Description:

Model No.:

Mode

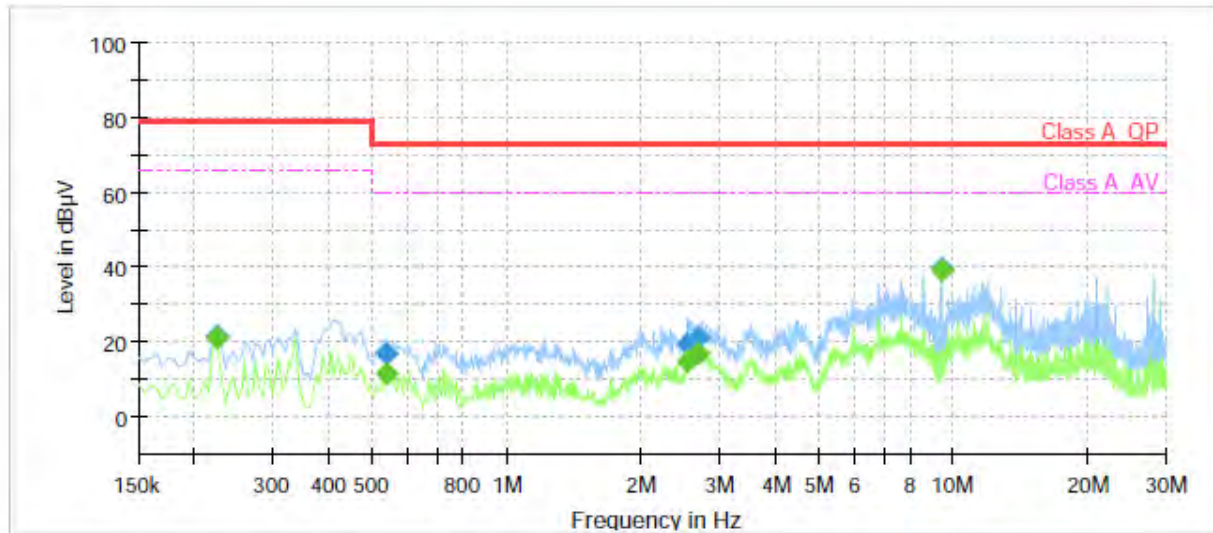
Operator Name:

Conducted Emission

XNP-6320RH

AC 24 V_H

KES



Final Result

Frequency (MHz)	QuasiPeak (dBµV)	CAverage (dBµV)	Limit (dBµV)	Margin (dB)	Meas. Time (ms)	Bandwidth (kHz)	Line	Corr. (dB)
0.225000	---	21.01	66.00	44.99	1000.0	9.000	L1	19.6
0.225000	21.75	---	79.00	57.25	1000.0	9.000	L1	19.6
0.540000	---	11.63	60.00	48.37	1000.0	9.000	L1	19.6
0.540000	16.82	---	73.00	56.18	1000.0	9.000	L1	19.6
2.545000	---	14.79	60.00	45.21	1000.0	9.000	L1	19.7
2.545000	19.79	---	73.00	53.21	1000.0	9.000	L1	19.7
2.695000	---	16.89	60.00	43.11	1000.0	9.000	L1	19.7
2.695000	21.16	---	73.00	51.84	1000.0	9.000	L1	19.7
9.380000	---	39.06	60.00	20.94	1000.0	9.000	L1	19.9
9.380000	39.58	---	73.00	33.42	1000.0	9.000	L1	19.9

This report shall not be reproduced except in full, without the written approval of KES Co., Ltd.

The results shown in this test report refer only to the sample(s) tested unless otherwise stated.

The authenticity of the test report, contact shchoi@kes.co.kr

NEUTRAL LINE

Common Information

Test Description:

Model No.:

Mode

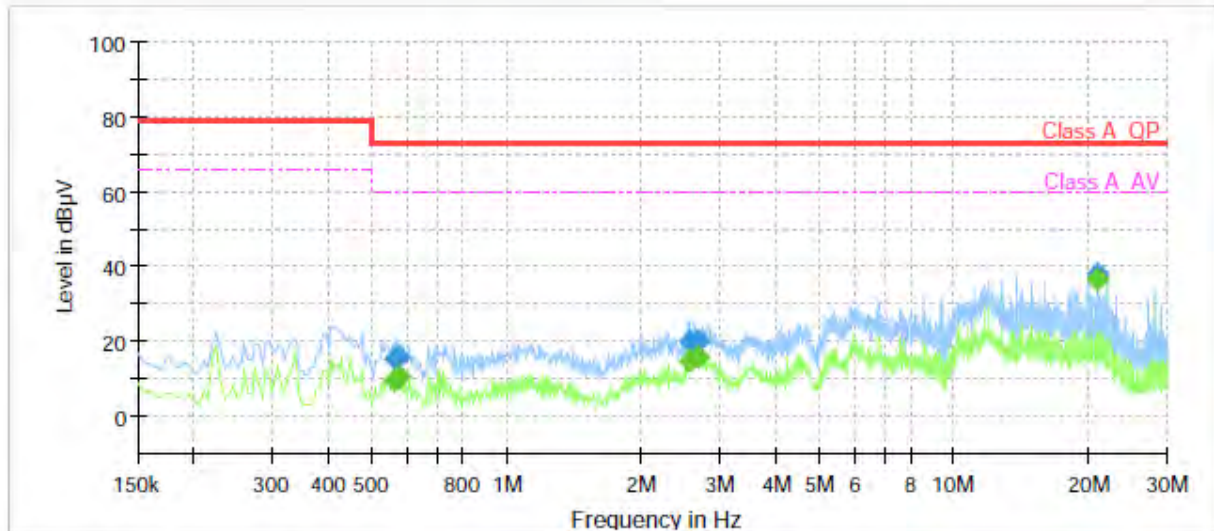
Operator Name:

Conducted Emission

XNP-6320RH

AC 24 V_N

KES



Final Result

Frequency (MHz)	QuasiPeak (dBμV)	CAverage (dBμV)	Limit (dBμV)	Margin (dB)	Meas. Time (ms)	Bandwidth (kHz)	Line	Corr. (dB)
0.560000	---	9.59	60.00	50.41	1000.0	9.000	N	19.6
0.560000	15.61	---	73.00	57.39	1000.0	9.000	N	19.6
0.575000	---	10.44	60.00	49.56	1000.0	9.000	N	19.6
0.575000	16.16	---	73.00	56.84	1000.0	9.000	N	19.6
2.560000	---	14.84	60.00	45.16	1000.0	9.000	N	19.7
2.560000	19.96	---	73.00	53.04	1000.0	9.000	N	19.7
2.695000	---	15.76	60.00	44.24	1000.0	9.000	N	19.7
2.695000	20.09	---	73.00	52.91	1000.0	9.000	N	19.7
20.990000	---	36.41	60.00	23.59	1000.0	9.000	N	20.2
20.990000	38.32	---	73.00	34.68	1000.0	9.000	N	20.2

This report shall not be reproduced except in full, without the written approval of KES Co., Ltd.

The results shown in this test report refer only to the sample(s) tested unless otherwise stated.

The authenticity of the test report, contact shchoi@kes.co.kr

■ PoE

HOT LINE

Common Information

Test Description:

Model No.:

Mode

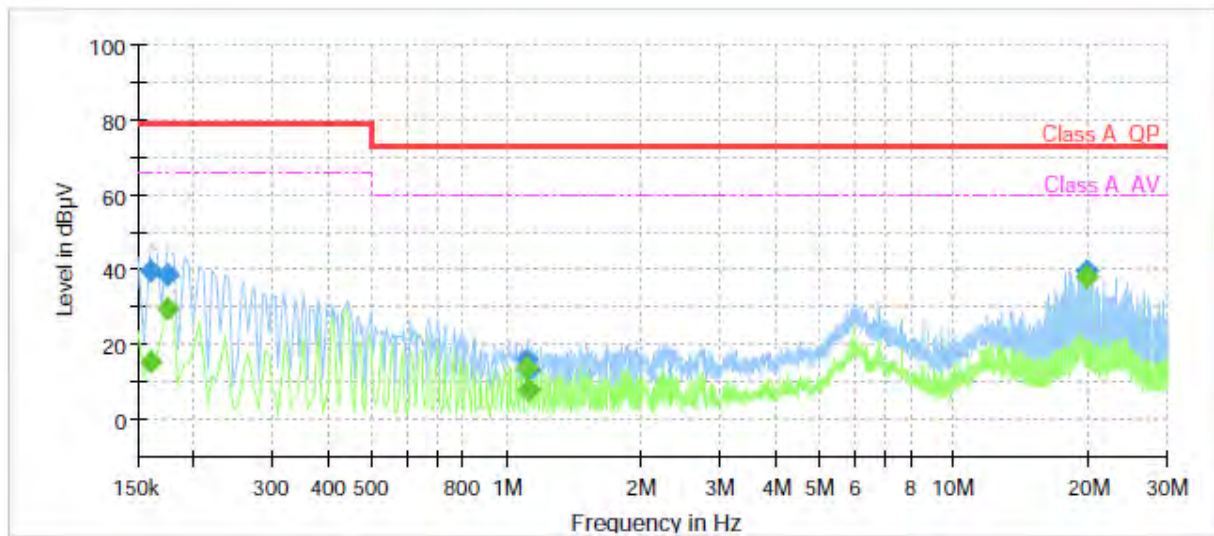
Operator Name:

Conducted Emission

XNP-6320RH

PoE_H

KES



Final Result

Frequency (MHz)	QuasiPeak (dBμV)	CAverage (dBμV)	Limit (dBμV)	Margin (dB)	Meas. Time (ms)	Bandwidth (kHz)	Line	Corr. (dB)
0.160000	---	15.27	66.00	50.73	1000.0	9.000	L1	19.5
0.160000	39.46	---	79.00	39.54	1000.0	9.000	L1	19.5
0.175000	---	29.84	66.00	36.16	1000.0	9.000	L1	19.5
0.175000	38.41	---	79.00	40.59	1000.0	9.000	L1	19.5
1.110000	---	14.00	60.00	46.00	1000.0	9.000	L1	19.7
1.110000	16.17	---	73.00	56.83	1000.0	9.000	L1	19.7
1.115000	---	7.73	60.00	52.27	1000.0	9.000	L1	19.7
1.115000	13.48	---	73.00	59.52	1000.0	9.000	L1	19.7
19.710000	---	38.31	60.00	21.69	1000.0	9.000	L1	20.1
19.710000	39.51	---	73.00	33.49	1000.0	9.000	L1	20.1

This report shall not be reproduced except in full, without the written approval of KES Co., Ltd.

The results shown in this test report refer only to the sample(s) tested unless otherwise stated.

The authenticity of the test report, contact shchoi@kes.co.kr

NEUTRAL LINE

Common Information

Test Description:

Model No.:

Mode

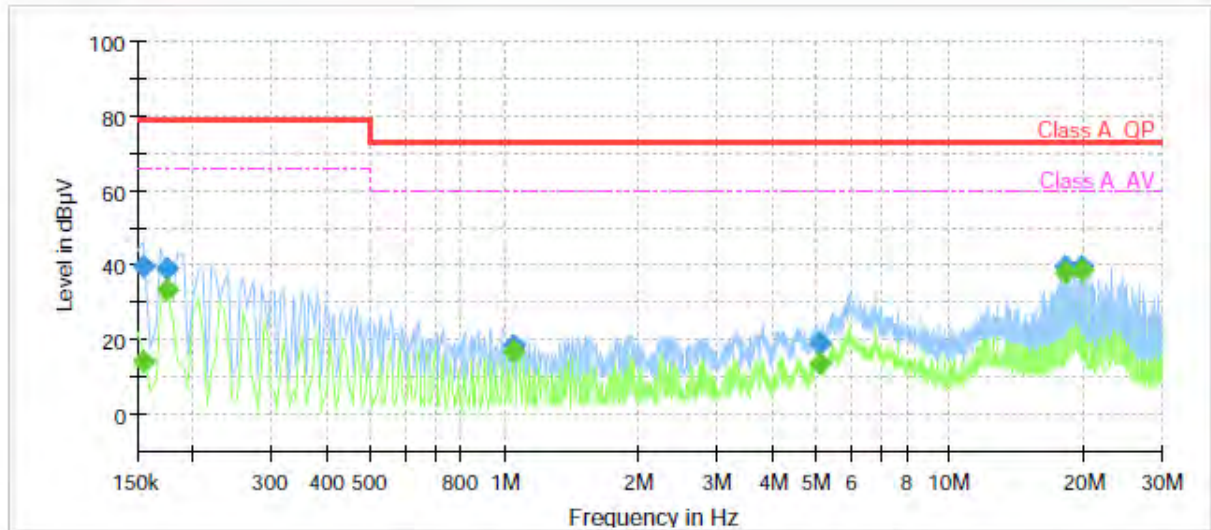
Operator Name:

Conducted Emission

XNP-6320RH

PoE_N

KES



Final Result

Frequency (MHz)	QuasiPeak (dBµV)	CAverage (dBµV)	Limit (dBµV)	Margin (dB)	Meas. Time (ms)	Bandwidth (kHz)	Line	Corr. (dB)
0.155000	---	14.19	66.00	51.81	1000.0	9.000	N	19.6
0.155000	39.70	---	79.00	39.30	1000.0	9.000	N	19.6
0.175000	---	33.12	66.00	32.88	1000.0	9.000	N	19.5
0.175000	39.28	---	79.00	39.72	1000.0	9.000	N	19.5
1.050000	---	16.95	60.00	43.05	1000.0	9.000	N	19.7
1.050000	18.76	---	73.00	54.24	1000.0	9.000	N	19.7
5.100000	---	13.84	60.00	46.16	1000.0	9.000	N	19.8
5.100000	19.27	---	73.00	53.73	1000.0	9.000	N	19.8
18.245000	---	38.18	60.00	21.82	1000.0	9.000	N	20.2
18.245000	39.85	---	73.00	33.15	1000.0	9.000	N	20.2
19.710000	---	38.44	60.00	21.56	1000.0	9.000	N	20.2
19.710000	39.76	---	73.00	33.24	1000.0	9.000	N	20.2

◆ Calculation

$$\text{QuasiPeak [dBuV]} / \text{CAverage [dBuV]} = \text{Reading Value [dBuV]} + \text{Corr. [dB]}$$

QuasiPeak / CAverage : The Final Value

Reading Value : Not shown in the table.

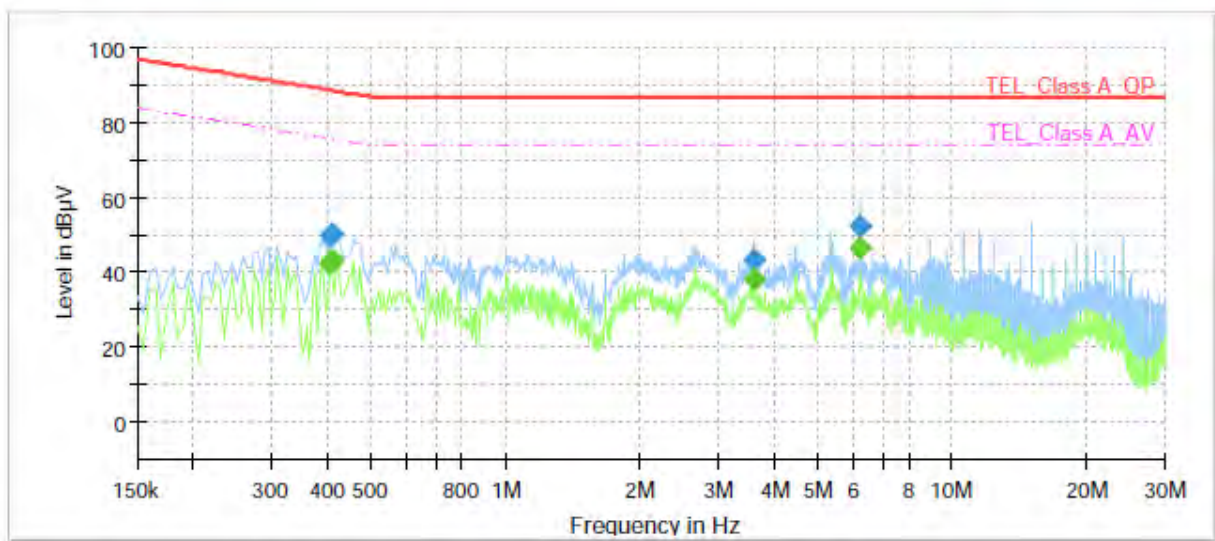
Corr. : Correction values (LISN FACTOR + (Cable Loss + Pulse Limiter FACTOR))

Conducted Emissions at Telecommunication Ports

■ AC 24 V
[10 Mbps]

Common Information

Test Description:	Telecommunication Emission
Model No.:	XNP-6320RH
Mode	AC 24 V_10 Mbps
Operator Name:	KES



Final Result

Frequency (MHz)	QuasiPeak (dBμV)	CAverage (dBμV)	Limit (dBμV)	Margin (dB)	Meas. Time (ms)	Bandwidth (kHz)	Line	Corr. (dB)
0.405000	---	42.37	75.75	33.38	1000.0	9.000	Single Line	19.8
0.405000	49.79	---	88.75	38.96	1000.0	9.000	Single Line	19.8
0.410000	---	43.64	75.65	32.01	1000.0	9.000	Single Line	19.8
0.410000	50.36	---	88.65	38.29	1000.0	9.000	Single Line	19.8
3.585000	---	38.28	74.00	35.72	1000.0	9.000	Single Line	19.7
3.585000	43.52	---	87.00	43.48	1000.0	9.000	Single Line	19.7
6.250000	---	46.72	74.00	27.28	1000.0	9.000	Single Line	19.8
6.250000	52.39	---	87.00	34.61	1000.0	9.000	Single Line	19.8

[100 Mbps]

Common Information

Test Description:

Model No.:

Mode

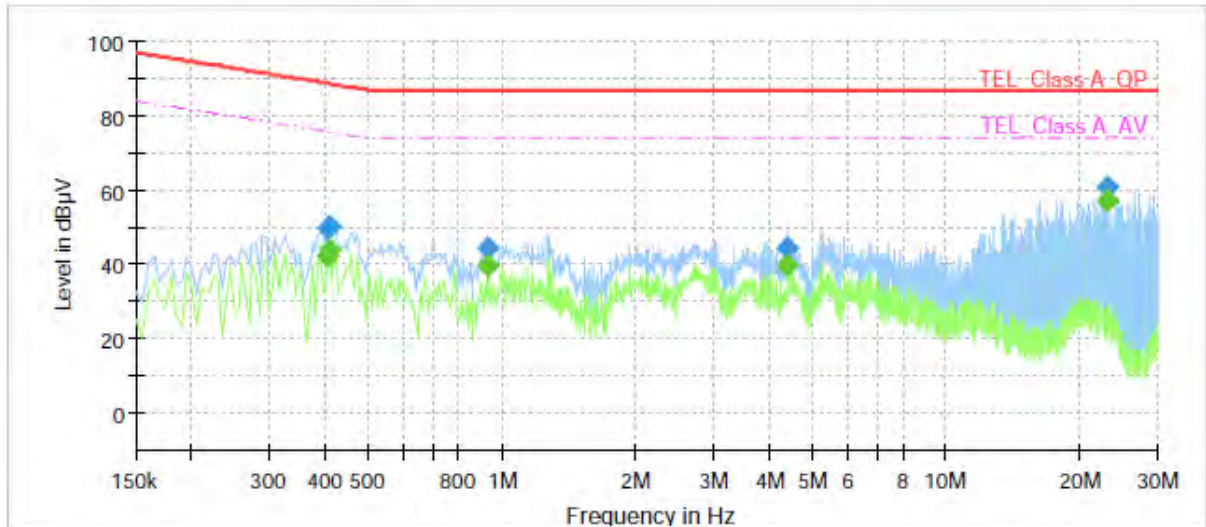
Operator Name:

Telecommunication Emission

XNP-6320RH

AC 24 V_100 Mbps

KES



Final Result

Frequency (MHz)	QuasiPeak (dBμV)	CAverage (dBμV)	Limit (dBμV)	Margin (dB)	Meas. Time (ms)	Bandwidth (kHz)	Line	Corr. (dB)
0.405000	---	42.30	75.75	33.45	1000.0	9.000	Single Line	19.7
0.405000	49.67	---	88.75	39.08	1000.0	9.000	Single Line	19.7
0.410000	---	43.89	75.65	31.76	1000.0	9.000	Single Line	19.7
0.410000	50.42	---	88.65	38.23	1000.0	9.000	Single Line	19.7
0.930000	---	39.89	74.00	34.11	1000.0	9.000	Single Line	19.6
0.930000	44.54	---	87.00	42.46	1000.0	9.000	Single Line	19.6
4.410000	---	39.93	74.00	34.07	1000.0	9.000	Single Line	19.6
4.410000	44.48	---	87.00	42.52	1000.0	9.000	Single Line	19.6
23.130000	---	57.31	74.00	16.69	1000.0	9.000	Single Line	20.3
23.130000	60.77	---	87.00	26.23	1000.0	9.000	Single Line	20.3

This report shall not be reproduced except in full, without the written approval of KES Co., Ltd.

The results shown in this test report refer only to the sample(s) tested unless otherwise stated.

The authenticity of the test report, contact shchoi@kes.co.kr

■ PoE
[10 Mbps]

Common Information

Test Description:

Model No.:

Mode

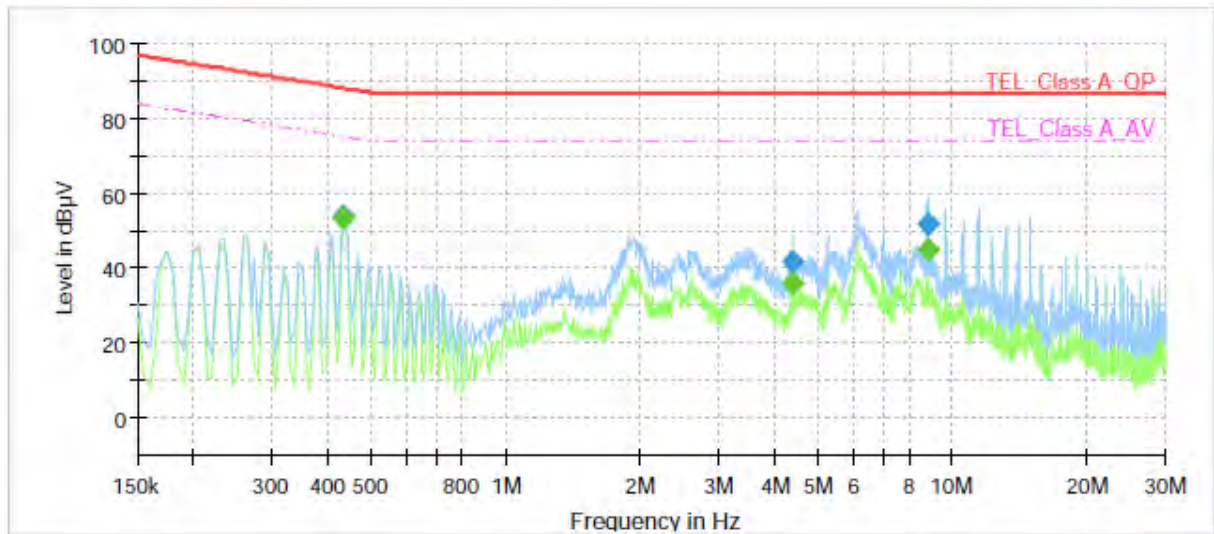
Operator Name:

Telecommunication Emission

XNP-6320RH

PoE_10 Mbps

KES



Final Result

Frequency (MHz)	QuasiPeak (dBμV)	CAverage (dBμV)	Limit (dBμV)	Margin (dB)	Meas. Time (ms)	Bandwidth (kHz)	Line	Corr. (dB)
0.435000	---	53.30	75.16	21.86	1000.0	9.000	Single Line	19.8
0.435000	53.79	---	88.16	34.37	1000.0	9.000	Single Line	19.8
4.400000	---	35.77	74.00	38.23	1000.0	9.000	Single Line	19.7
4.400000	41.85	---	87.00	45.15	1000.0	9.000	Single Line	19.7
8.805000	---	44.77	74.00	29.23	1000.0	9.000	Single Line	19.8
8.805000	51.99	---	87.00	35.01	1000.0	9.000	Single Line	19.8

This report shall not be reproduced except in full, without the written approval of KES Co., Ltd.

The results shown in this test report refer only to the sample(s) tested unless otherwise stated.

The authenticity of the test report, contact shchoi@kes.co.kr

[100 Mbps]

Common Information

Test Description:

Model No.:

Mode

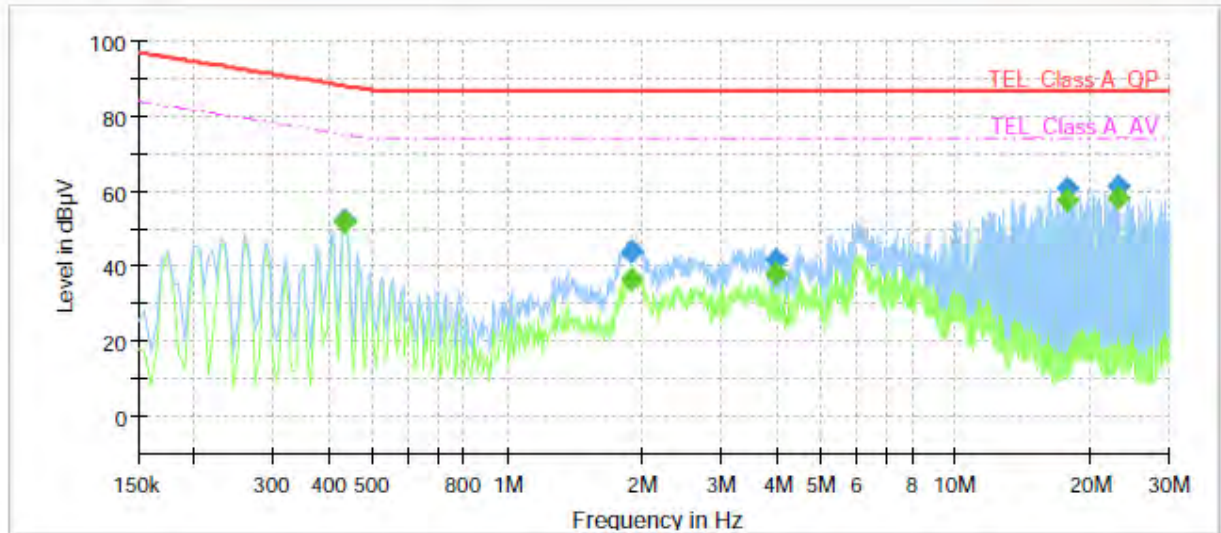
Operator Name:

Telecommunication Emission

XNP-6320RH

PoE_100 Mbps

KES



Final Result

Frequency (MHz)	QuasiPeak (dBµV)	CAverage (dBµV)	Limit (dBµV)	Margin (dB)	Meas. Time (ms)	Bandwidth (kHz)	Line	Corr. (dB)
0.435000	---	52.12	75.16	23.04	1000.0	9.000	Single Line	19.7
0.435000	52.32	---	88.16	35.84	1000.0	9.000	Single Line	19.7
1.890000	---	36.29	74.00	37.71	1000.0	9.000	Single Line	19.6
1.890000	43.88	---	87.00	43.12	1000.0	9.000	Single Line	19.6
3.955000	---	38.28	74.00	35.72	1000.0	9.000	Single Line	19.6
3.955000	42.01	---	87.00	44.99	1000.0	9.000	Single Line	19.6
17.695000	---	57.80	74.00	16.20	1000.0	9.000	Single Line	20.0
17.695000	60.95	---	87.00	26.05	1000.0	9.000	Single Line	20.0
23.130000	---	58.36	74.00	15.64	1000.0	9.000	Single Line	20.3
23.130000	61.59	---	87.00	25.41	1000.0	9.000	Single Line	20.3

◆ Calculation

$$\text{QuasiPeak [dBuV]} / \text{CAverage [dBuV]} = \text{Reading Value [dBuV]} + \text{Corr. [dB]}$$

QuasiPeak / CAverage : The Final Value

Reading Value : Not shown in the table.

Corr. : Correction values (ISN FACTOR + (Cable Loss + Pulse Limiter FACTOR))



KES Co., Ltd.

3701, 40, Simin-daero 365beon-gil,
Dongan-gu, Anyang-si, Gyeonggi-do, 14057, Korea
Tel: +82-31-425-6200 / Fax: +82-31-424-0450
www.kes.co.kr

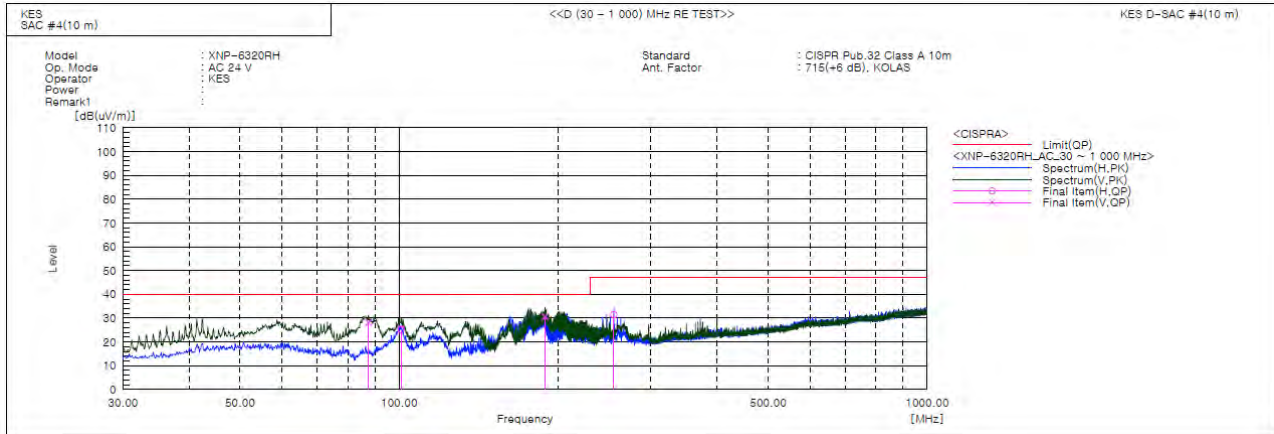
Report No.:

KES-E1-19T0140

Page (26) of (47)

Radiated Electric Field Emissions(Below 1 GHz)

■ AC 24 V



Final Result

No.	Frequency [MHz]	(P)	Reading QP [dB(uV)]	c.f [dB(1/m)]	Result QP [dB(uV/m)]	Limit QP [dB(uV/m)]	Margin QP [dB]	Height [cm]	Angle [deg]	Remark
1	87.542	V	53.8	-25.6	28.2	40.0	11.8	138.0	234.0	
2	100.810	H	47.9	-22.6	25.3	40.0	14.7	400.0	206.0	
3	188.959	V	53.6	-23.0	30.6	40.0	9.4	100.0	169.0	
4	255.040	H	51.5	-20.0	31.5	47.0	15.5	380.0	75.0	

This report shall not be reproduced except in full, without the written approval of KES Co., Ltd.
The results shown in this test report refer only to the sample(s) tested unless otherwise stated.
The authenticity of the test report, contact shchoi@kes.co.kr



KES Co., Ltd.

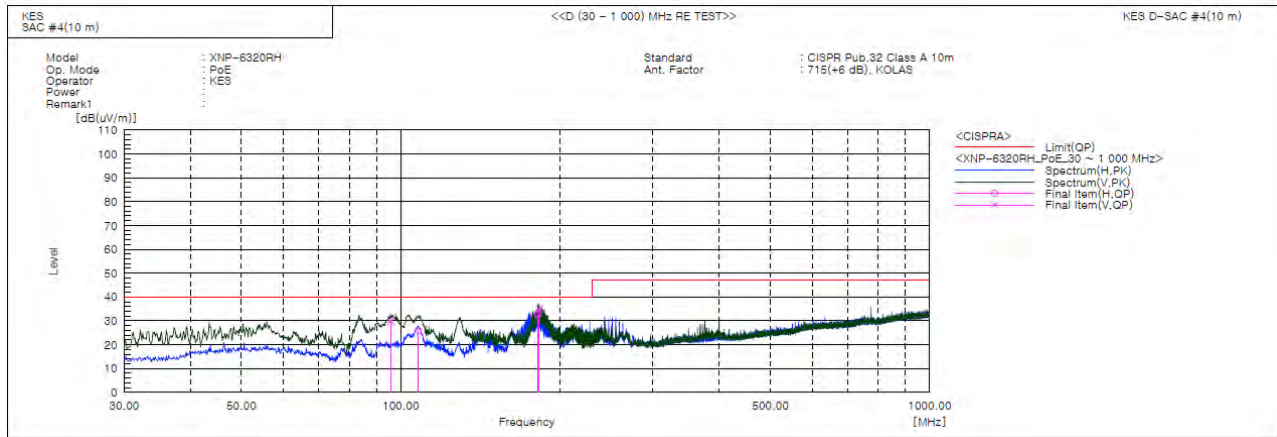
3701, 40, Simin-daero 365beon-gil,
Dongan-gu, Anyang-si, Gyeonggi-do, 14057, Korea
Tel: +82-31-425-6200 / Fax: +82-31-424-0450
www.kes.co.kr

Report No.:

KES-EI-19T0140

Page (27) of (47)

PoE



Final Result

No.	Frequency [MHz]	(P)	Reading QP [dB(uV)]	c.f [dB(1/m)]	Result QP [dB(uV/m)]	Limit QP [dB(uV/m)]	Margin QP [dB]	Height [cm]	Angle [deg]	Remark
1	95.718	V	53.2	-23.3	29.9	40.0	10.1	124.0	258.0	
2	107.964	H	48.4	-22.6	25.8	40.0	14.2	400.0	92.0	
3	181.684	H	56.5	-23.8	32.7	40.0	7.3	367.0	88.0	
4	182.775	V	58.7	-23.7	35.0	40.0	5.0	100.0	188.0	

◆ Calculation

Corrected Amplitude [dBuV] = Amplitude[dBuV] + Correction Factor [dB]

Corrected Amplitude : The Final Value, Amplitude : Reading Value,

Correction Factor : ANT FACTOR + Cable loss

This report shall not be reproduced except in full, without the written approval of KES Co., Ltd.

The results shown in this test report refer only to the sample(s) tested unless otherwise stated.

The authenticity of the test report, contact shchoi@kes.co.kr



KES Co., Ltd.

3701, 40, Simin-daero 365beon-gil,
Dongan-gu, Anyang-si, Gyeonggi-do, 14057, Korea
Tel: +82-31-425-6200 / Fax: +82-31-424-0450
www.kes.co.kr

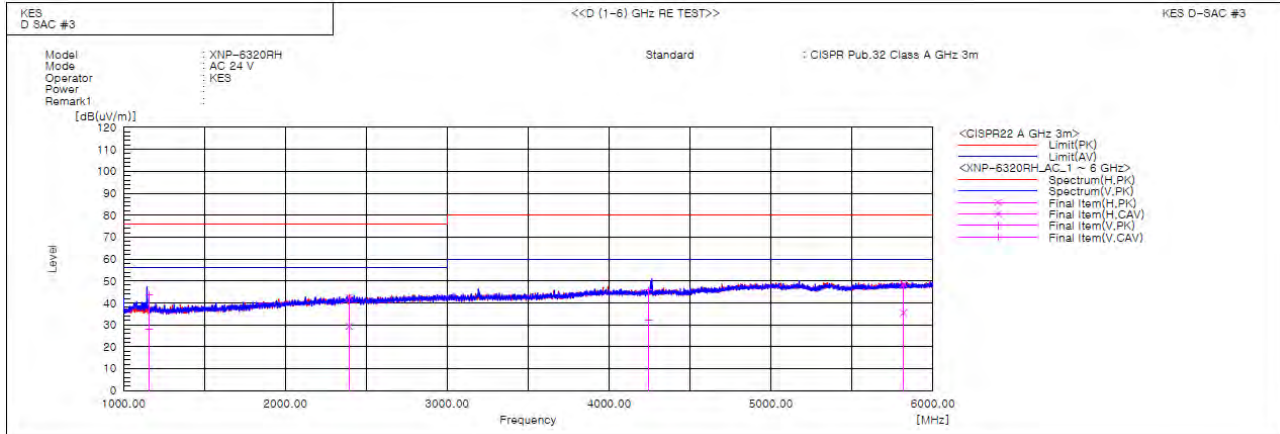
Report No.:

KES-EI-19T0140

Page (28) of (47)

Radiated Electric Field Emissions(Above 1 GHz)

■ AC 24 V



Final Result

No.	Frequency [MHz]	(P)	Reading PK [dB(uV)]	Reading CAV [dB(uV)]	c.f [dB(1/m)]	Result PK [dB(uV/m)]	Result CAV [dB(uV/m)]	Limit PK [dB(uV/m)]	Limit AV [dB(uV/m)]	Margin PK [dB]	Margin CAV [dB]	Height [cm]	Angle [deg]	Remark
1	1155.158	V	50.8	35.5	-7.3	43.5	28.2	76.0	56.0	32.5	27.8	100.0	271.7	
2	2393.810	H	42.9	29.7	-0.3	42.6	29.4	76.0	56.0	33.4	26.6	100.0	354.3	
3	4245.184	V	41.0	27.5	4.8	45.8	32.3	80.0	60.0	34.2	27.7	100.0	182.4	
4	5818.148	H	39.6	26.4	9.1	48.7	35.5	80.0	60.0	31.3	24.5	100.0	75.9	

This report shall not be reproduced except in full, without the written approval of KES Co., Ltd.
The results shown in this test report refer only to the sample(s) tested unless otherwise stated.
The authenticity of the test report, contact shchoi@kes.co.kr



KES Co., Ltd.

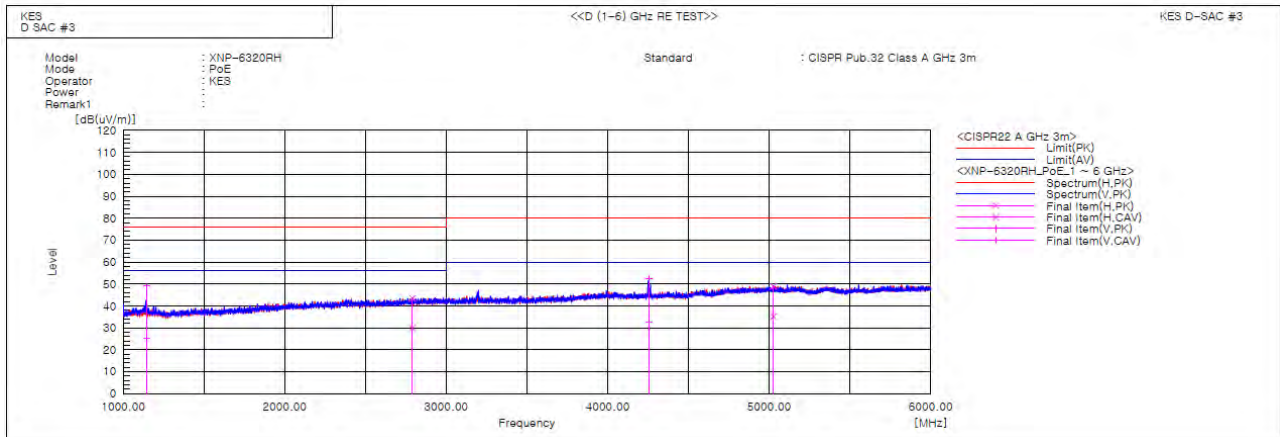
3701, 40, Simin-daero 365beon-gil,
Dongan-gu, Anyang-si, Gyeonggi-do, 14057, Korea
Tel: +82-31-425-6200 / Fax: +82-31-424-0450
www.kes.co.kr

Report No.:

KES-E1-19T0140

Page (29) of (47)

PoE



Final Result

No.	Frequency [MHz]	(P)	Reading PK [dB(uV)]	Reading CAV [dB(uV)]	c.f [dB(1/m)]	Result PK [dB(uV/m)]	Result CAV [dB(uV/m)]	Limit PK [dB(uV/m)]	Limit AV [dB(uV/m)]	Margin PK [dB]	Margin CAV [dB]	Height [cm]	Angle [deg]	Remark
1	1144.789	V	56.4	32.8	-7.4	49.0	25.4	76.0	56.0	27.0	30.6	100.0	6.9	
2	2789.921	H	42.4	28.9	1.0	43.4	29.9	76.0	56.0	32.6	26.1	100.0	80.6	
3	4257.659	V	47.7	27.5	4.9	52.6	32.4	80.0	60.0	27.4	27.6	100.0	213.3	
4	5025.482	H	40.4	26.4	8.6	49.0	35.0	80.0	60.0	31.0	25.0	100.0	103.5	

◆ Calculation

Result(PK/CAV) [dB(μ V/m)] = (Reading(PK/CAV)[dB(μ V)] + c.f[dB(1/m)])

Margin(PK/CAV)[dB] = Limit[dB(μ V/m)] - Result(PK/CAV) [dB(μ V/m)]

Reading(PK/CAV) : Reading value, Result(PK/CAV) : Reading value + Factor value

Limit(QP) : Limit value, c.f : (ANT Factor + Cable Loss - Preamp Factor), Margin: Margin value

This report shall not be reproduced except in full, without the written approval of KES Co., Ltd.

The results shown in this test report refer only to the sample(s) tested unless otherwise stated.

The authenticity of the test report, contact shchoi@kes.co.kr

Test Setup Photos and Configuration

Conducted Voltage Emissions



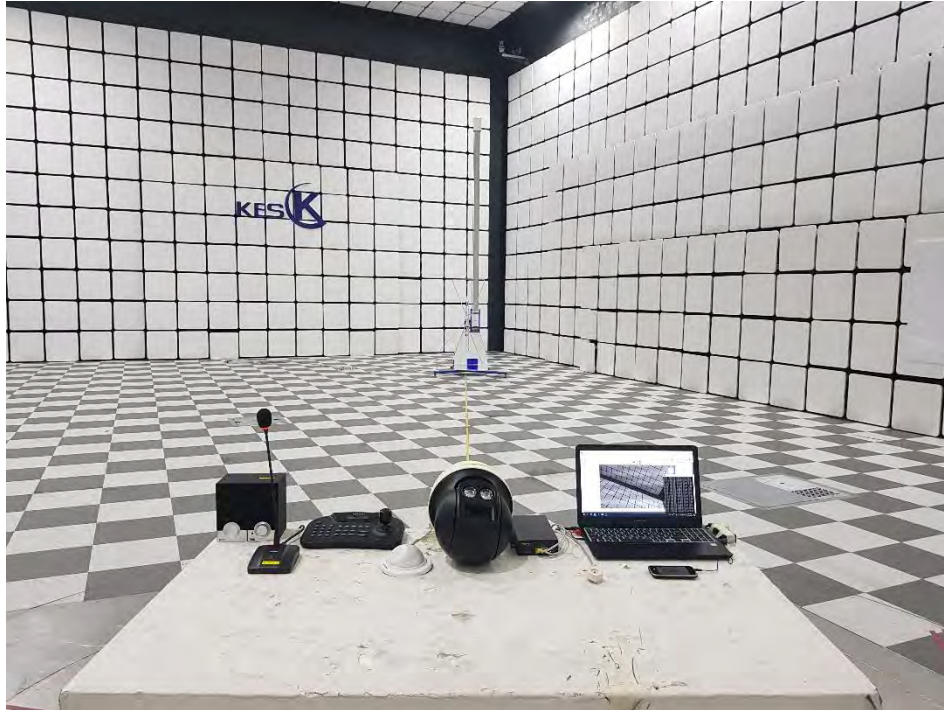
This report shall not be reproduced except in full, without the written approval of KES Co., Ltd.
The results shown in this test report refer only to the sample(s) tested unless otherwise stated.
The authenticity of the test report, contact shchoi@kes.co.kr

Conducted Telecommunication Emissions



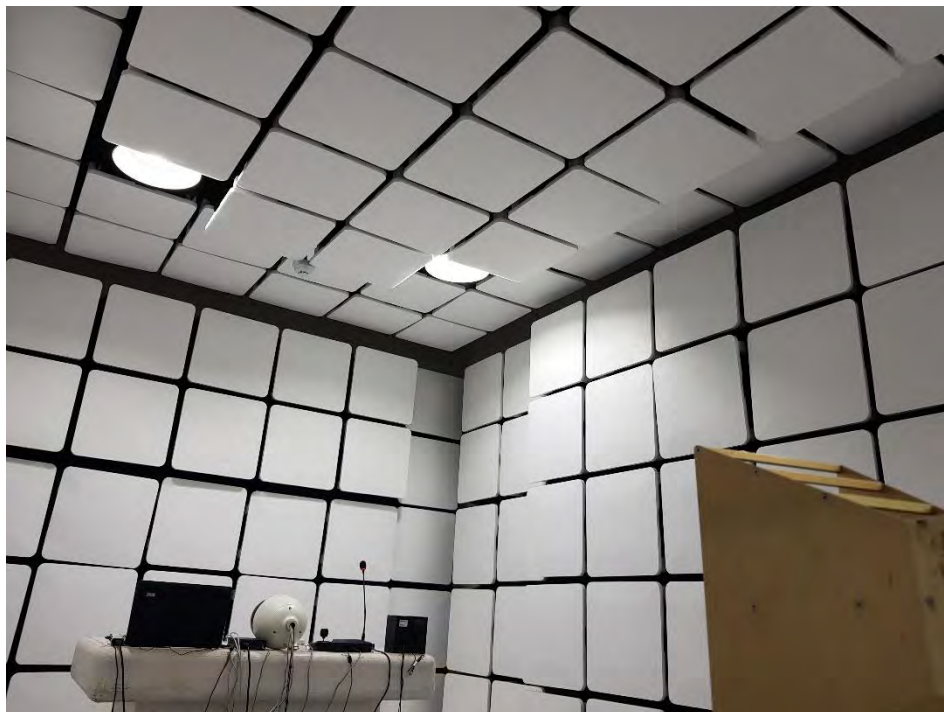
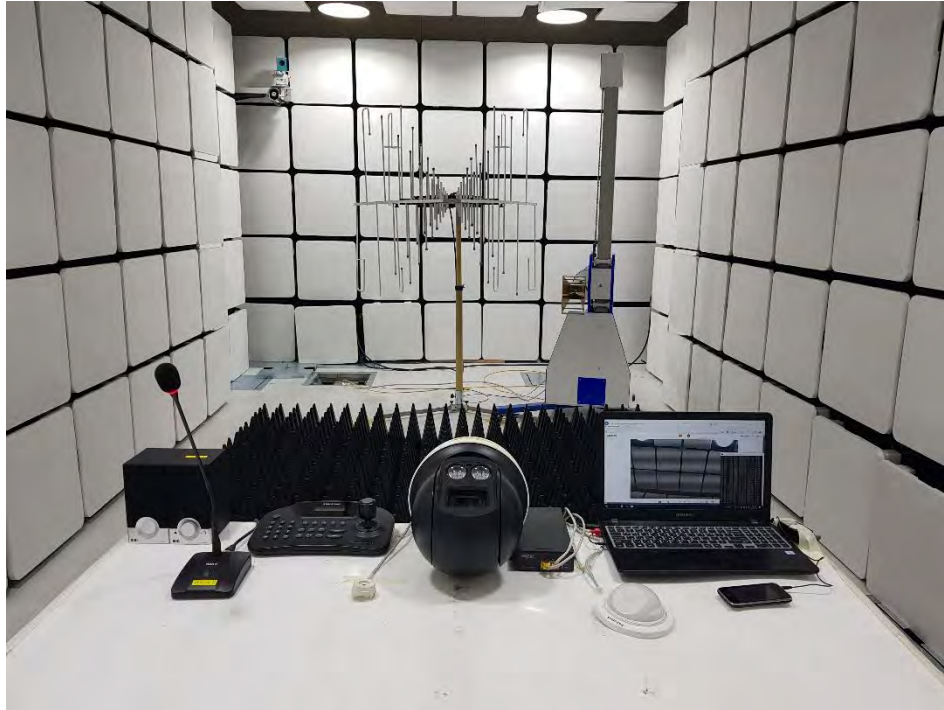
This report shall not be reproduced except in full, without the written approval of KES Co., Ltd.
The results shown in this test report refer only to the sample(s) tested unless otherwise stated.
The authenticity of the test report, contact shchoi@kes.co.kr

Radiated Electric Field Emissions(Below 1 GHz)



This report shall not be reproduced except in full, without the written approval of KES Co., Ltd.
The results shown in this test report refer only to the sample(s) tested unless otherwise stated.
The authenticity of the test report, contact shchoi@kes.co.kr

Radiated Electric Field Emissions(Above 1 GHz)



This report shall not be reproduced except in full, without the written approval of KES Co., Ltd.
The results shown in this test report refer only to the sample(s) tested unless otherwise stated.
The authenticity of the test report, contact shchoi@kes.co.kr

EUT External Photographs

(Top)



(Bottom)



This report shall not be reproduced except in full, without the written approval of KES Co., Ltd.
The results shown in this test report refer only to the sample(s) tested unless otherwise stated.
The authenticity of the test report, contact shchoi@kes.co.kr

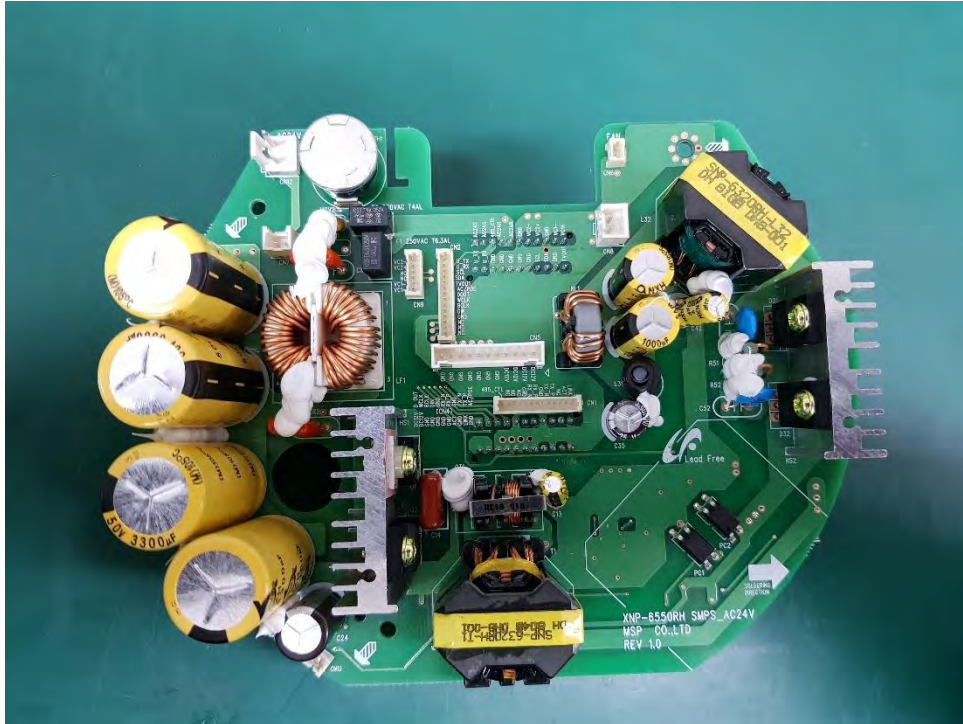
EUT Internal Photographs

(Internal View)

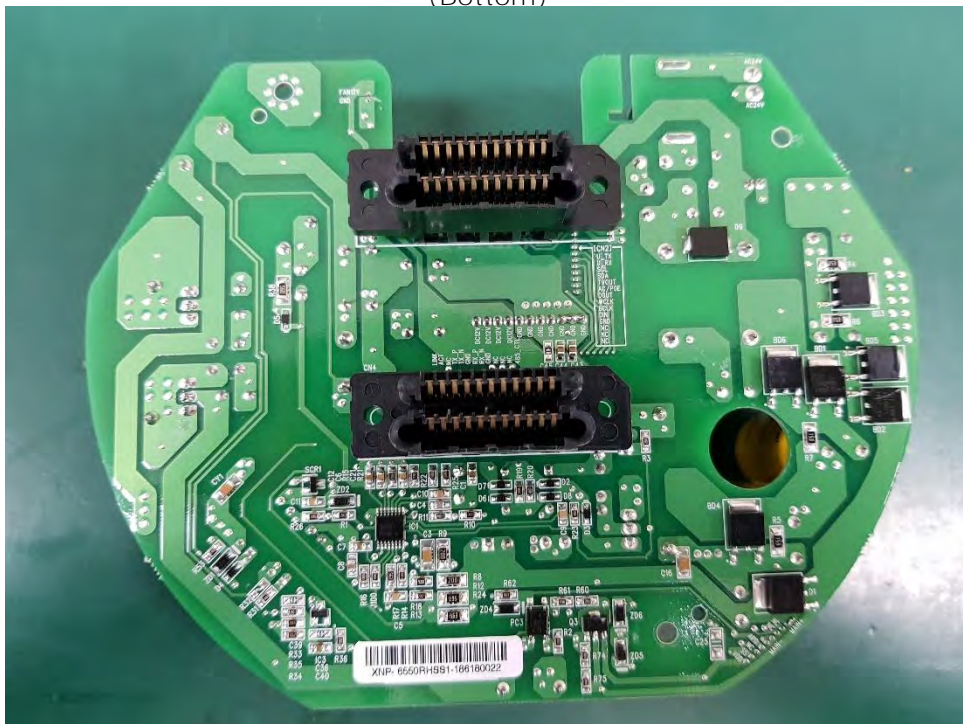


EUT Internal View – AC Power Board

(Top)



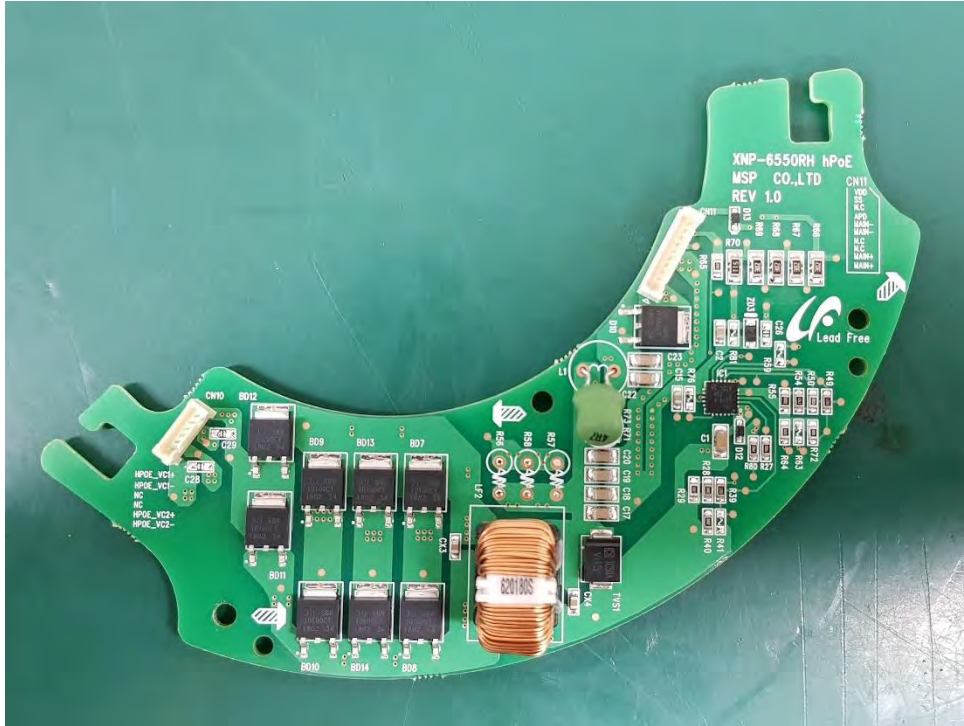
(Bottom)



This report shall not be reproduced except in full, without the written approval of KES Co., Ltd.
The results shown in this test report refer only to the sample(s) tested unless otherwise stated.
The authenticity of the test report, contact shchoi@kes.co.kr

EUT Internal View – PoE Power Board

(Top)



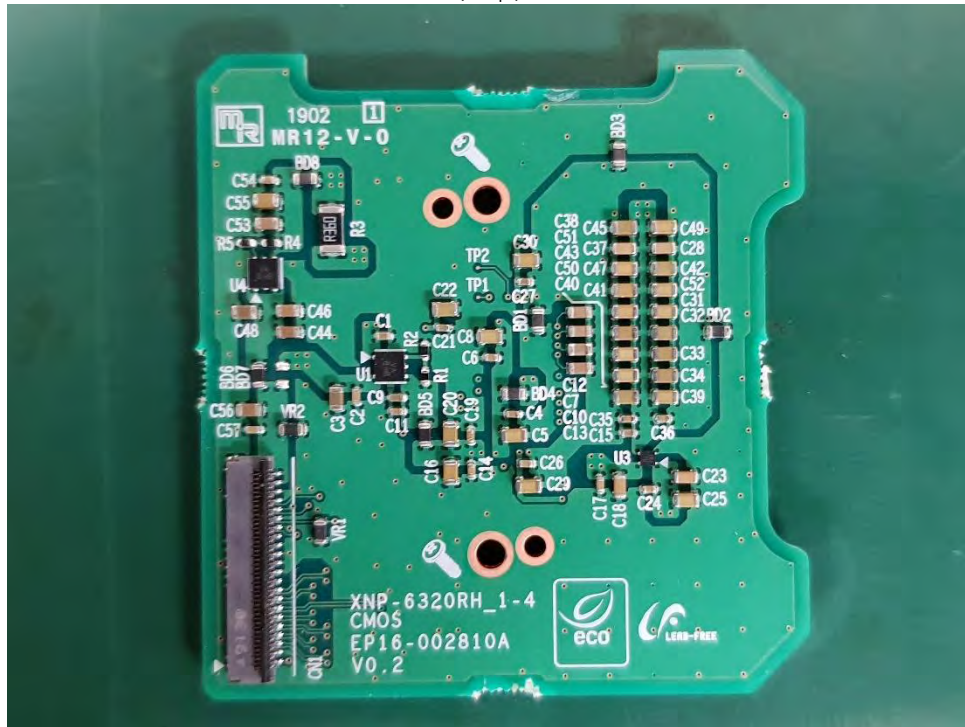
(Bottom)



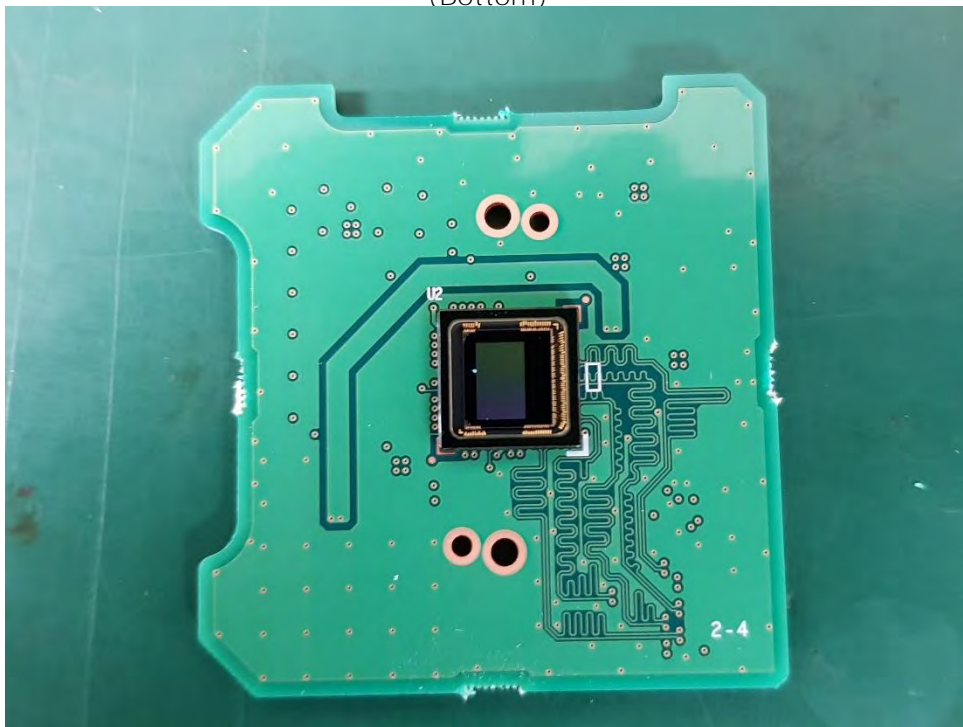
This report shall not be reproduced except in full, without the written approval of KES Co., Ltd.
The results shown in this test report refer only to the sample(s) tested unless otherwise stated.
The authenticity of the test report, contact shchoi@kes.co.kr

EUT Internal View – CMOS Board

(Top)



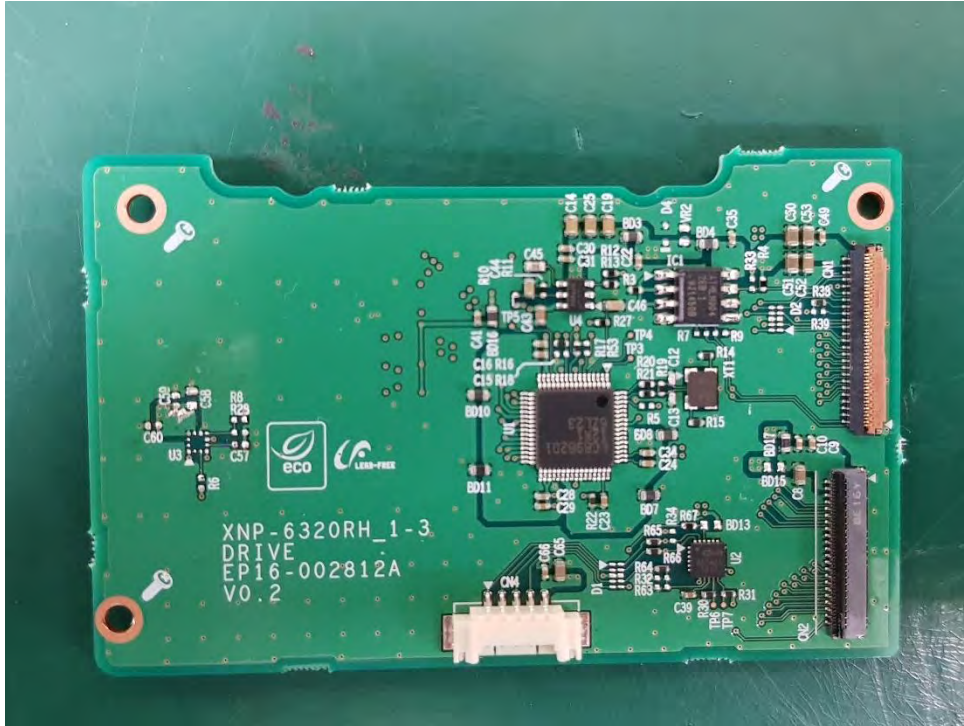
(Bottom)



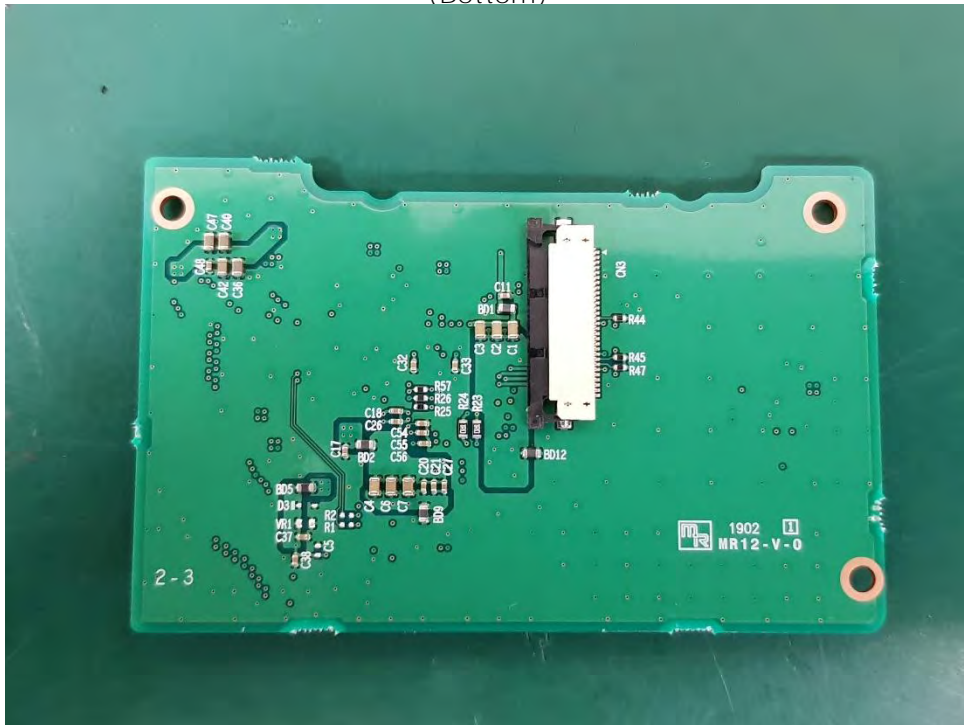
This report shall not be reproduced except in full, without the written approval of KES Co., Ltd.
The results shown in this test report refer only to the sample(s) tested unless otherwise stated.
The authenticity of the test report, contact shchoi@kes.co.kr

EUT Internal View – Drive Board

(Top)



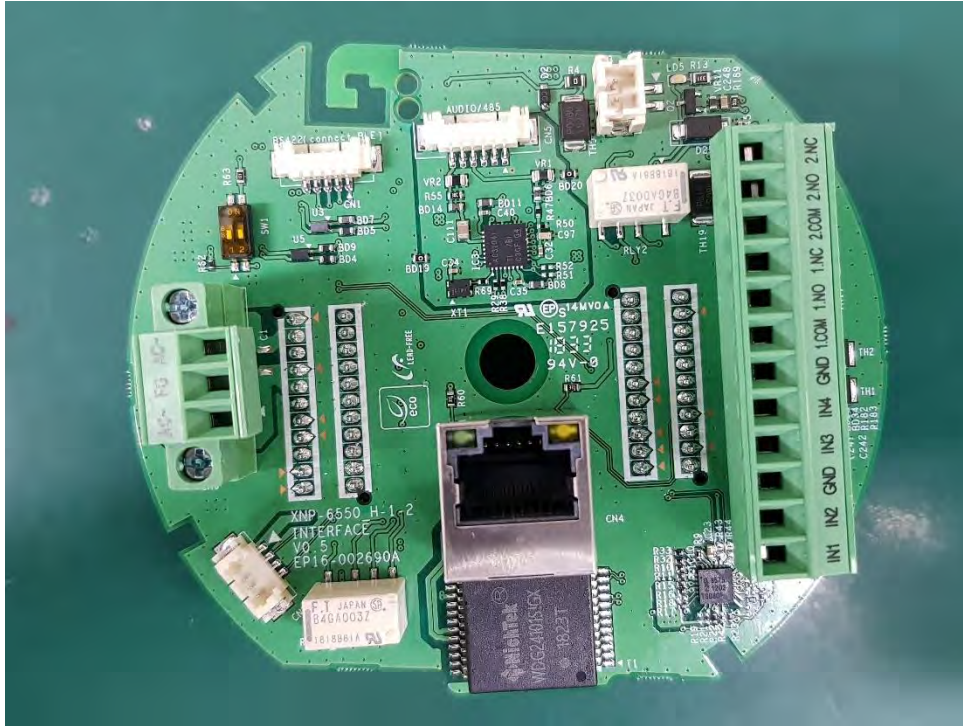
(Bottom)



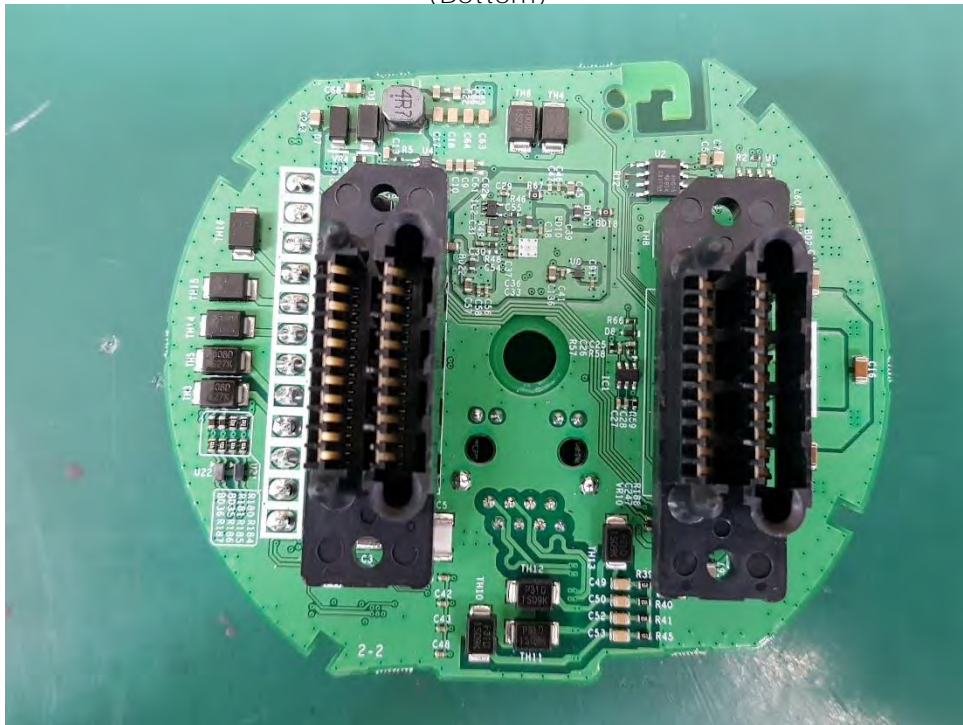
This report shall not be reproduced except in full, without the written approval of KES Co., Ltd.
The results shown in this test report refer only to the sample(s) tested unless otherwise stated.
The authenticity of the test report, contact shchoi@kes.co.kr

EUT Internal View – I Interface Board

(Top)



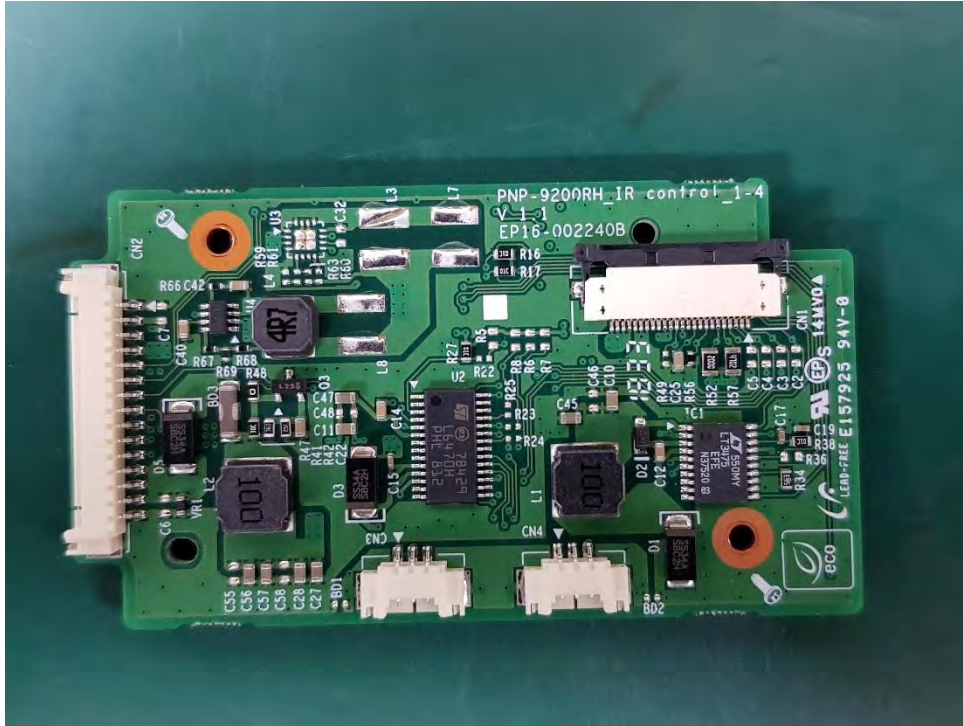
(Bottom)



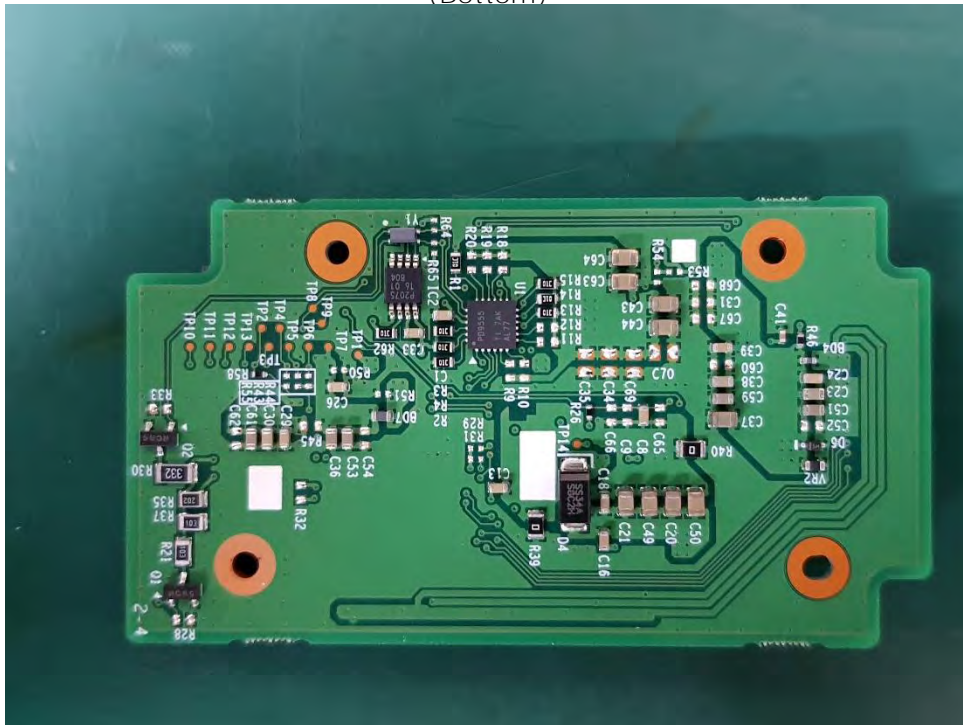
This report shall not be reproduced except in full, without the written approval of KES Co., Ltd.
The results shown in this test report refer only to the sample(s) tested unless otherwise stated.
The authenticity of the test report, contact shchoi@kes.co.kr

EUT Internal View – IR Control Board

(Top)



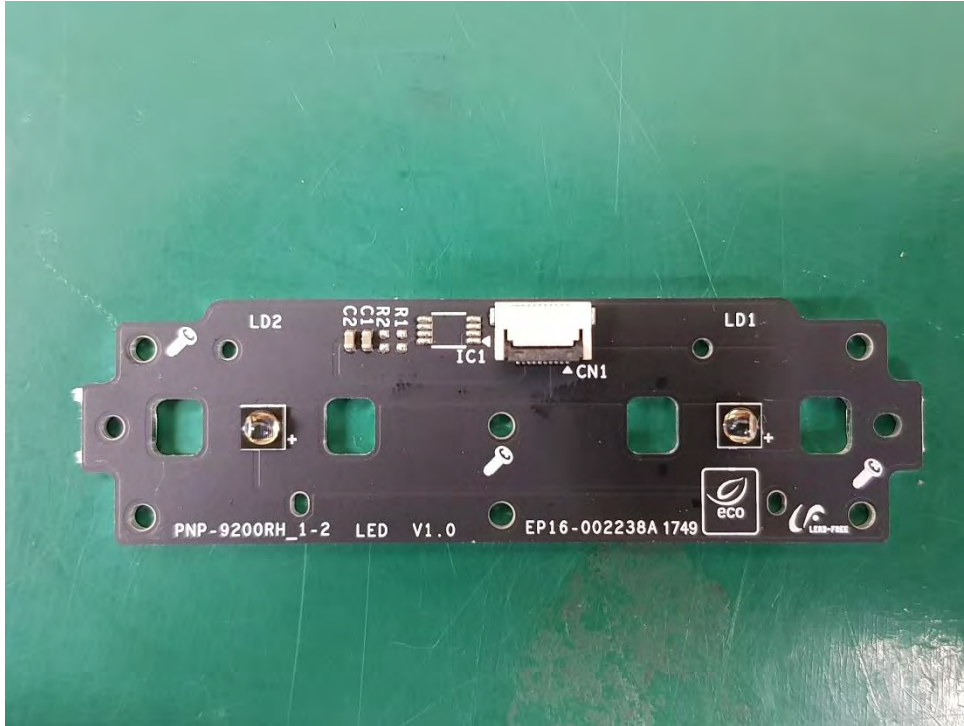
(Bottom)



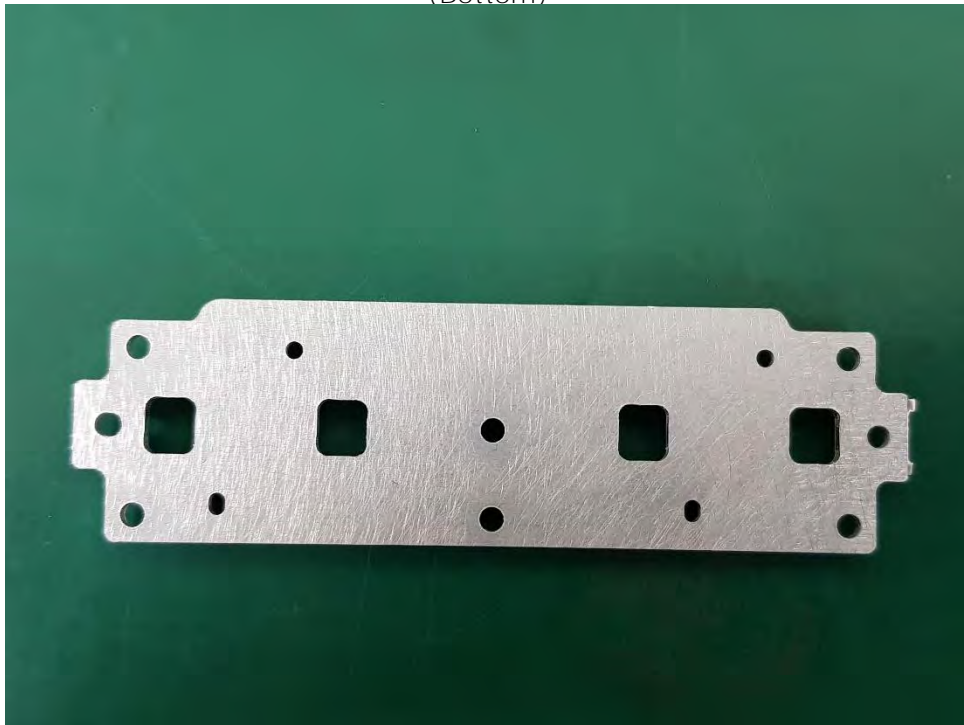
This report shall not be reproduced except in full, without the written approval of KES Co., Ltd.
The results shown in this test report refer only to the sample(s) tested unless otherwise stated.
The authenticity of the test report, contact shchoi@kes.co.kr

EUT Internal View – LED Board

(Top)



(Bottom)



This report shall not be reproduced except in full, without the written approval of KES Co., Ltd.
The results shown in this test report refer only to the sample(s) tested unless otherwise stated.
The authenticity of the test report, contact shchoi@kes.co.kr

EUT Internal View – Network Board

(Top)



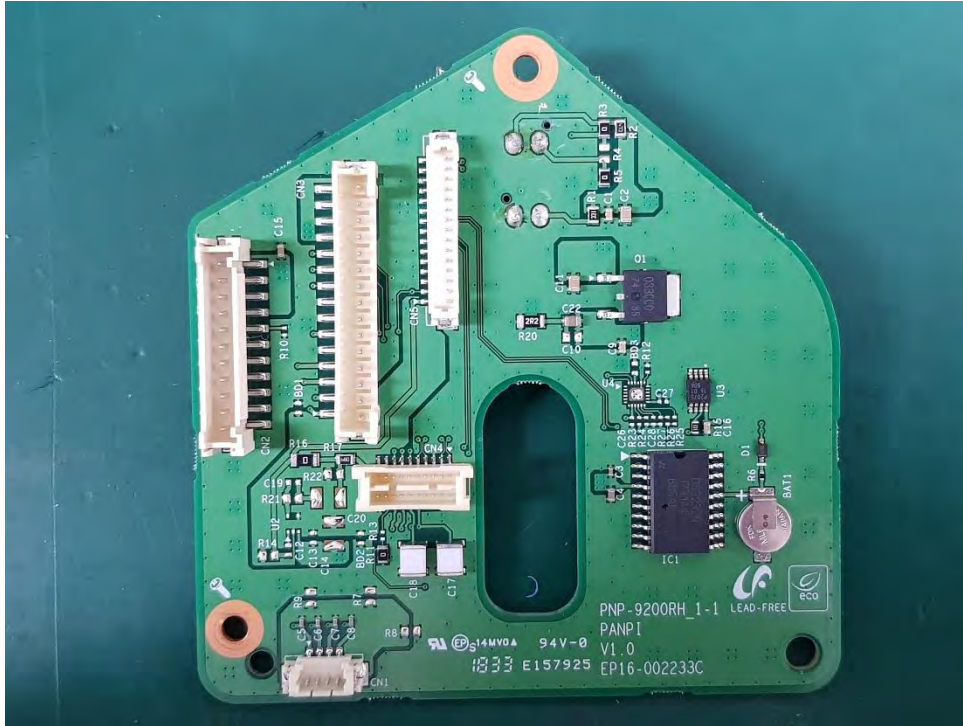
(Bottom)



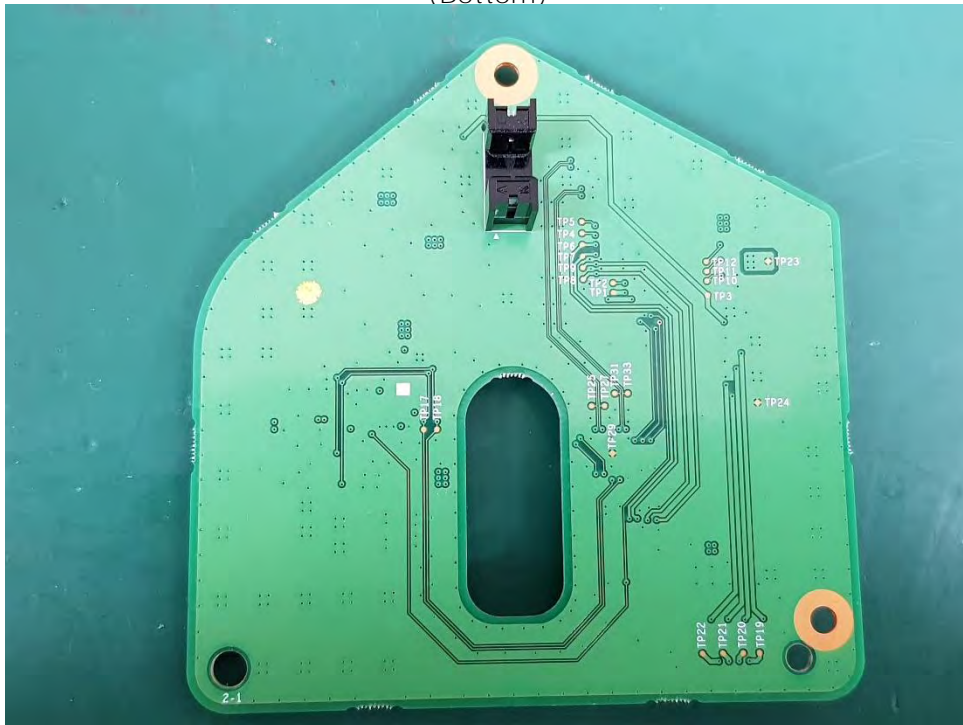
This report shall not be reproduced except in full, without the written approval of KES Co., Ltd.
The results shown in this test report refer only to the sample(s) tested unless otherwise stated.
The authenticity of the test report, contact shchoi@kes.co.kr

EUT Internal View – PANPI Board

(Top)



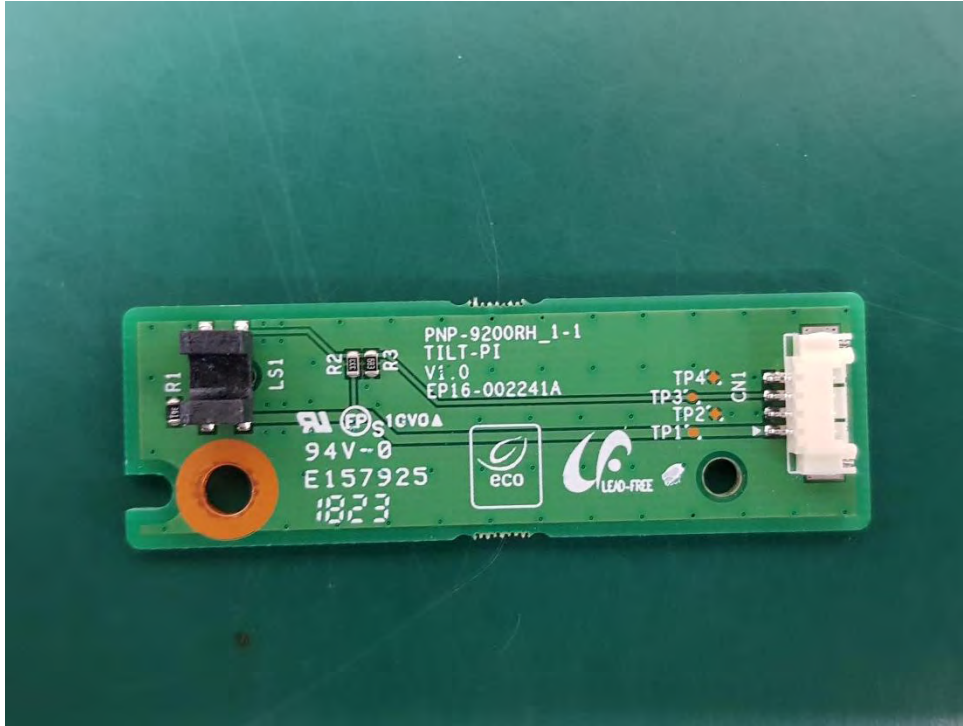
(Bottom)



This report shall not be reproduced except in full, without the written approval of KES Co., Ltd.
The results shown in this test report refer only to the sample(s) tested unless otherwise stated.
The authenticity of the test report, contact shchoi@kes.co.kr

EUT Internal View – TILT Board

(Top)



(Bottom)



This report shall not be reproduced except in full, without the written approval of KES Co., Ltd.
The results shown in this test report refer only to the sample(s) tested unless otherwise stated.
The authenticity of the test report, contact shchoi@kes.co.kr

EUT Internal View – Lens

(Top)

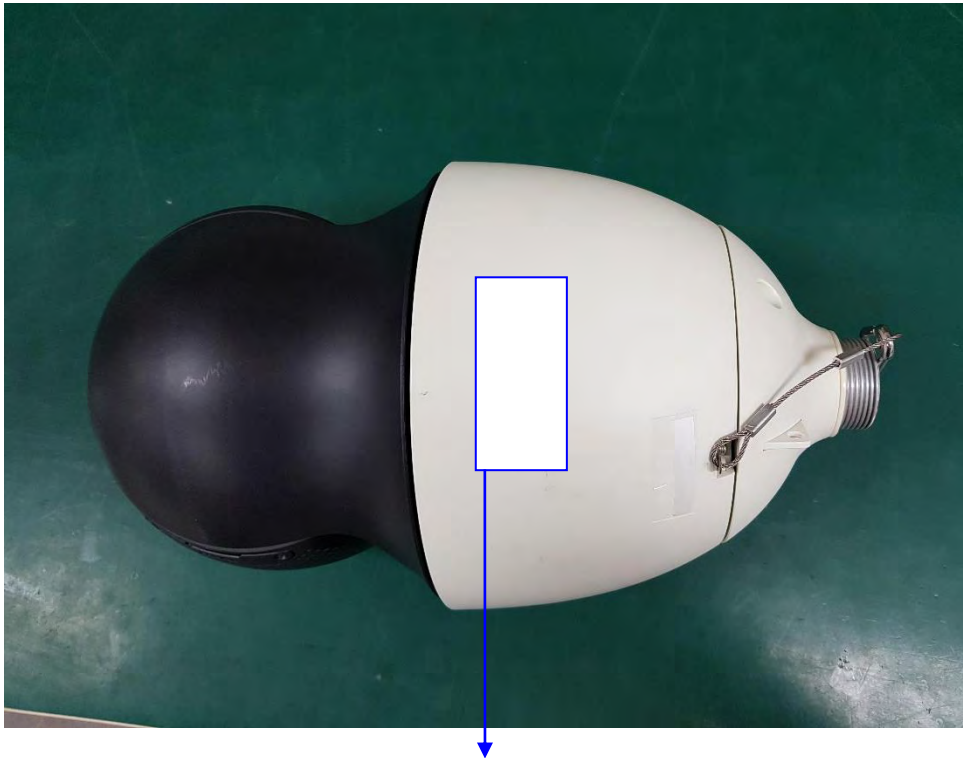


(Bottom)



Label Photographs

This report shall not be reproduced except in full, without the written approval of KES Co., Ltd.
The results shown in this test report refer only to the sample(s) tested unless otherwise stated.
The authenticity of the test report, contact shchoi@kes.co.kr



この装置は、クラスA情報技術装置です。この装置を家庭環境で使用すると電波妨害を引き起こすことがあります。この場合には使用者が適切な対策を講ずるよう要求されることがあります。 VCCI-A