



JEISOON KANG
HANWHA TECHWIN CO LTD
6, PANGYO-RO 319BEON-GIL, BUNDANG-GU
SEONGNAM-SI GYEONGGI-DO 13488 KOREA

Date: 2019/07/17
Subscriber: 813307003
PartySite: 105140
File No: E158873
Project No: 4789030365
PD No: 19M21224
Type: R
PO Number: KANG, JEISOON

Subject: **Procedure And/Or Report Material**

The following material resulting from the investigation under the above numbers is enclosed.

Issue

<u>Date</u>	<u>Vol</u>	<u>Sec</u>	<u>Pages</u>	<u>Revised Date</u>
		X1	Index Page(s)	
2019/07/09	X1	A259	Cert of Compliance	
2019/07/09	X1	A259	Add New Proc/Report Sect	

If there are illegible images in this package, legible images may be found online via MyHome@UL under My UL Reports/CDA.

Please file revised pages and illustrations in place of material of like identity. New material should be filed in its proper numerical order.

NOTE: Follow-Up Service Procedure revisions DO NOT include Cover Pages, Test Records and Conclusion Pages. Report revisions DO NOT include Authorization Pages, Indices, Section General Pages and Appendixes.

Please review this material and report any inaccuracies to UL's Customer Service Professionals. Contact information for all of UL's global offices can be found at <http://ul.com/aboutul/locations>.

If you'd like to receive updated materials FASTER, UL offers electronic access and/or delivery of this material. For more details, contact UL's Customer Service Professionals as shown above.

This material is provided on behalf of UL LLC(UL) or any authorized licensee of UL.

SEO File

File		Volume	Page	Date:
E158873	Index	X1	1	09-Jul-19

Index

Product Type	Model/Type Reference	Report Reference #	Status
Digital Video Recorder	SVR-430	E158873-A2-UL	
Video Presenter	UF-80, UF-80DX, UF-80ST	E158873-A4-UL	
Video Presenter	SVP-5300N	E158873-A5-UL	
Video Presenter	SDP-900DXAN, SDP-950DXAN, SDP-950STAN	E158873-A6-UL	
Video Presenter	SDP-850, SDP-850DX	E158873-A9-UL	
Digital Video Recorder	SVR-1650, SVR-1650E, SVR-1640, SVR-1640E, SVR-950, SVR-950E and SVR-1640A	E158873-A11-UL	
Video Presenter	SDP-6500DXA	E158873-A12-UL	
Video Presenter	UF-130DX	E158873-A14-UL	
Video Presenter	UF-130ST	E158873-A15-UL	
Network Video Recorder	SNR-6400, SNR-3200, SRN-3250, SRN-6450	E158873-A16-UL	
Digital Video Recorder.	SVR-480	E158873-A17-UL	Withdrawn
Video Presenter	SDP-860	E158873-A18-UL	
Digital Video Recorder.	SVR-1670	E158873-A19-UL	
UTP Power Supply Unit	SPU-400	E158873-A20-UL	Withdrawn
Digital Presenter	SDP-760	E158873-A44-UL	
Network Camera	SNP-5300H*, SNP-6201H* (* is Blank or N or P: N = NTSC, P=PAL)	E158873-A45-UL	
Network Camera	SND-7011*, SND-5011*, SND-5061*, SND-7061*, SNV-5010*, SNZ-5200* (* is blank or N or P: N = NTSC, P=PAL)	E158873-A46-UL	
Network Camera	SNP-5300*, SNP-6201* (* is blank or N or P: N = NTSC, P=PAL)	E158873-A47-UL	
Digital Color Camera	SCP-3371H*, SCP-2371H*, SCP-2271H*, SCP-2373H*, SCP-2273H* (* is blank or N or P: N = NTSC, P=PAL)	E158873-A48-UL	
Digital Color Camera	SCP-3371*, SCP-2371*, SCP-2271*, SCP-2373*, SCP-2273* (* is blank or N or P: N = NTSC, P=PAL)	E158873-A49-UL	
Network Camera	SND-7082*, SND-7082F*, SNV-7082* (* is blank or N or P: N = NTSC, P=PAL)	E158873-A50-UL	
Network Camera	SNB-7001*, SNB-5001*, SNB-3002* (* is blank or N or P: N = NTSC, P=PAL)	E158873-A51-UL	
Network Camera	SNO-7082R* (* is blank or N or P: N = NTSC, P=PAL)	E158873-A52-UL	
Network Camera	SNB-7002* (* is blank or N or P: N = NTSC, P=PAL)	E158873-A53-UL	

File		Volume	Page	Date:
E158873	Index	X1	2	09-Jul-19

DIGITAL COLOR CAMERA	SCV-2010F*, SCD-1020R*, SCD-2080R*, SCD-2020R*, SCD-2010*, SCD-2010B*, SCD-2010F*, SCB-3020*, SCB-3021*, SCB-2010*, SCO-1020R* (* is blank or N or P: N=NTSC, P=PAL)	E158873-A54-UL	
Network Camera	SNB-6004*, SNB-6003*, SNB-5004*, SNB-5003*, SNB-7004*, SNB-6005* (* is blank or N or P: N = NTSC, P=PAL)	E158873-A55-UL	
Network Camera	SND-6084*, SND-6083*, SND-5084*, SND-5083*, SND-7084* (* is blank or N or P: N = NTSC, P=PAL)	E158873-A56-UL	
DIGITAL COLOR CAMERA	SCD-2022*, SCD-2022R*, SCD-2042R* (* is blank or N or P: N = NTSC, P=PAL)	E158873-A58-UL	
Digital Color Camera	SCB-2004*, SCB-2005* (* is blank or N or P: N = NTSC, P=PAL);	E158873-A59-UL	
Digital Color Camera	SCD-2082*, SCV-2082R*, SCV-3083*, SCD-3083* (* is blank or N or P: N = NTSC, P=PAL)	E158873-A60-UL	
Network Camera	SND-6084R*, SND-7084R*, SND-5084R* (* is blank or N or P: N = NTSC, P=PAL)	E158873-A61-UL	
NETWORK CAMERA	SNO-6084R*. SNO-7084R* (* is blank or N or P: N = NTSC, P=PAL)	E158873-A62-UL	
Network Camera	SNV-6084R*, SNV-6084*, SNV-5084*, SNV-7084*, SNV-7084R*, SNV-5084R*, SNV-6084T* (* is blank or N or P: N = NTSC, P=PAL)	E158873-A63-UL	
Digital Color Camera	SCO-2081R* (* is blank or N or P: N = NTSC, P=PAL)	E158873-A64-UL	
DIGITAL COLOR CAMERA	SCB-2004*D, SCB-2005*D (* is blank or N or P: N = NTSC, P=PAL)	E158873-A65-UL	
DIGITAL VIDEO RECORDER	SRD-1673D*, SRD-1654D*, SRD-854D*, SRD-852D*, SRD-1673*, SRD-1653*, SRD-873*, SRD-1640*, SRD-840*(* is N or P, N=NTSC / P=PAL)	E158873-A66-UL	
Network Camera	SNP-6200RH*, SCP-2370RH* (* is N or P: N=NTSC,P=PAL)	E158873-A67-UL	
Network Camera	SNV-6012M* (* is N or P: N = NTSC, P=PAL)	E158873-A68-UL	
Network Camera	SNF-7010* (* is N or P: N = NTSC, P=PAL)	E158873-A69-UL	
Network Camera	SNO-6011R* (* is N or P: N = NTSC, P=PAL)	E158873-A72-UL	
Network Camera	SND-6011R* (* is N or P: N =	E158873-A73-UL	

File		Volume	Page	Date:
E158873	Index	X1	3	09-Jul-19

	NTSC, P=PAL)		
Digital Video Recorder	SRD-1680D*, SRD-880D* (*is N:NTSC / P:PAL)	E158873-A74-UL	
DIGITAL COLOR CAMERA	SCZ-2373*, SCZ-2273* (* is N or P: N = NTSC, P=PAL)	E158873-A75-UL	
NETWORK CAMERA	SNO-6081R* (* is N or P: N = NTSC, P=PAL)	E158873-A76-UL	
DIGITAL COLOR CAMERA	SCV-6081R* and SCD-6081R* (* is N or P: N = NTSC, P=PAL)	E158873-A77-UL	
NETWORK VIDEO RECORDER	SRN-4000	E158873-A78-UL	
DIGITAL COLOR CAMERA	SCD-6021* (* is N or P: N = NTSC, P=PAL)	E158873-A81-UL	
NETWORK CAMERA	SNV-6013* (* is N or P: N = NTSC, P=PAL)	E158873-A83-UL	
NETWORK CAMERA	SNB-6010* (* is N or P: N = NTSC, P=PAL)	E158873-A85-UL	
NETWORK CAMERA	SNP-6320H* (* is N or P: N = NTSC, P=PAL)	E158873-A86-UL	
NETWORK CAMERA	SNP-6320* (* is N or P: N = NTSC, P=PAL)	E158873-A87-UL	
Network Video Recorder	SRN-472S	E158873-A88-UL	
Digital Video Recorder	SRD-1676D*, SRD-1656D*, SRD-876D* (* is N or P, N=NTSC/ P=PAL)	E158873-A89-UL	
DIGITAL COLOR CAMERA	SCB-5000* (* is N or P: N = NTSC, P=PAL)	E158873-A90-UL	
DIGITAL COLOR CAMERA	SCB-5000*D (* is N or P: N = NTSC, P=PAL)	E158873-A91-UL	
DIGITAL COLOR CAMERA	SCD-5080* (* is N or P: N = NTSC, P=PAL)	E158873-A92-UL	
DIGITAL COLOR CAMERA	SCB-5003* (* is N or P: N = NTSC, P=PAL)	E158873-A94-UL	
DIGITAL COLOR CAMERA	SCV-5082* (* is N or P: N = NTSC, P=PAL)	E158873-A95-UL	
DIGITAL COLOR CAMERA	SCD-5083* (* is N or P: N = NTSC, P=PAL)	E158873-A96-UL	
DIGITAL COLOR CAMERA	SCV-5083* (* is N or P: N = NTSC, P=PAL)	E158873-A97-UL	
NETWORK CAMERA	SNF-8010VM*, SNF-8010* (* is N or P: N = NTSC, P=PAL)	E158873-A98-UL	
DIGITAL COLOR CAMERA	SCD-5030*, SCD-5020* (* is N or P: N = NTSC, P=PAL)	E158873-A99-UL	
NETWORK CAMERA	SNO-5084R* (* is N or P: N = NTSC, P=PAL)	E158873-A100-UL	
DIGITAL COLOR CAMERA	SCO-5083R* (* is N or P: N = NTSC, P=PAL)	E158873-A101-UL	
NETWORK CAMERA	SNP-6321* (* is N or P: N = NTSC, P=PAL)	E158873-A102-UL	
NETWORK CAMERA	SNP-6321H* (* is N or P: N = NTSC, P=PAL)	E158873-A103-UL	
DIGITAL COLOR	SCV-5085* (* is N or P: N =	E158873-A104-UL	

File		Volume	Page	Date:
E158873	Index	X1	4	09-Jul-19

CAMERA	NTSC, P=PAL)		
NETWORK CAMERA	SNB-8000* (* is N or P: N = NTSC, P=PAL)	E158873-A105-UL	
NETWORK CAMERA	SNV-8080* (* is N or P: N = NTSC, P=PAL)	E158873-A106-UL	
NETWORK CAMERA	SNZ-6320	E158873-A107-UL	
NETWORK CAMERA	SNP-6320RH* (* is N or P: N=NTSC,P=PAL)	E158873-A108-UL	
NETWORK CAMERA	SNP-5321H* (* is N or P: N = NTSC, P=PAL)	E158873-A109-UL	
NETWORK CAMERA	SNP-5321*(* N: NTSC / P:PAL)	E158873-A110-UL	
NETWORK CAMERA	SND-L6013R*, SND-L6013*, SND-L5013* (* is N or P: N:NTSC/ P:PAL)	E158873-A111-UL	
NETWORK CAMERA	SNO-L6083R*, SNO-L5083R* (* is N or P: N = NTSC, P=PAL)	E158873-A113-UL	
Network Video Recorder	SRN-1673S*(* is N or P)	E158873-A115-UL	
NETWORK CAMERA	SNO-L6013R* (* is N or P: N = NTSC, P=PAL)	E158873-A118-UL	
NETWORK CAMERA	SND-L6083R*, SND-L5083R* (* is N or P: N = NTSC, P=PAL)	E158873-A119-UL	
Network Video Recorder	SRN-873S* (* is N or P: N = NTSC, P=PAL)	E158873-A120-UL	
NETWORK CAMERA	SNV-L6083R*, SNV-L5083R* (* is N or P: N = NTSC, P=PAL)	E158873-A121-UL	
NETWORK CAMERA	SNB-9000* (* is N or P: N = NTSC, P=PAL)	E158873-A122-UL	
Optical PTZ Accessory	SBP-301HF	E158873-A125-UL	
Optical PTZ Accessory	SBP-300HF	E158873-A126-UL	
NETWORK CAMERA	SNV-8081R* (* is N or P: N = NTSC, P=PAL)	E158873-A127-UL	
NETWORK CAMERA	SNO-8081R* (* is N or P: N = NTSC, P=PAL)	E158873-A128-UL	
NETWORK CAMERA	SNV-6085R* (* is N or P: N = NTSC, P=PAL)	E158873-A129-UL	
DIGITAL COLOR CAMERA	SCB-6003* (* is N or P: N = NTSC, P=PAL)	E158873-A130-UL	
DIGITAL COLOR CAMERA	SCO-6023R* (* is N or P: N = NTSC, P=PAL)	E158873-A132-UL	
DIGITAL COLOR CAMERA	SCV-6083R* (* is N or P: N = NTSC, P=PAL)	E158873-A133-UL	
DIGITAL COLOR CAMERA	SCV-6023R* (* is N or P: N = NTSC, P=PAL)	E158873-A135-UL	
DIGITAL COLOR CAMERA	SCD-6023R* (* is N or P: N = NTSC, P=PAL)	E158873-A136-UL	
DIGITAL COLOR CAMERA	SCD-6083R* (* is N or P: N = NTSC, P=PAL)	E158873-A137-UL	
DIGITAL COLOR CAMERA	SCO-6083R*(* is N or P: N = NTSC, P=PAL)	E158873-A138-UL	
NETWORK CAMERA	SNV-L6014RM*, SNV-L6013R* (* is N or P: N = NTSC, P=PAL)	E158873-A139-UL	
DIGITAL COLOR	PNO-9080R* (* is N or P: N =	E158873-A140-UL	

File		Volume	Page	Date:
E158873	Index	X1	5	09-Jul-19

CAMERA	NTSC, P=PAL)		
NETWORK CAMERA	PNV-9080R* (* is N or P: N = NTSC, P=PAL)	E158873-A141-UL	
NETWORK CAMERA	PND-9080R* (* is N or P: N = NTSC, P=PAL)	E158873-A142-UL	
Digital Video Recorder	SRD-1685*, SRD-894* (* is N or P, N=NTSC/ P=PAL)	E158873-A143-UL	
Digital Video Recorder	SRD-1694* (* is N or P, N=NTSC/ P=PAL)	E158873-A144-UL	
Network Video Recorder (NVR)	XRN-2011*, XRN-2010*, XRN-3010*, QRN-1610* (* is N or P: N=NTSC, P=PAL)	E158873-A146-UL	
NETWORK CAMERA	QNO-7030R*, QNO-7020R*, QNO-7010R*, QNO-6030R*, QNO-6020R*, QNO-6010R*, QNO-6070R*, QNO-7080R* (* is N or P: N = NTSC, P=PAL)	E158873-A147-UL	
NETWORK CAMERA	QND-7030R*, QND-7020R*, QND-7010R*, QND-6030R*, QND-6020R*, QND-6010R*, QND-6070R*, QND-7080R* (* is N or P: N = NTSC, P=PAL)	E158873-A148-UL	
NETWORK CAMERA	QNV-7030R*, QNV-7020R*, QNV-7010R*, QNV-6030R*, QNV-6020R*, QNV-6010R*, QNV-6070R*, QNV-7080R* (* is N or P: N = NTSC, P=PAL)	E158873-A149-UL	
Network Video Recorder	XRN-1610S* (* is N or P: N=NTSC, P=PAL)	E158873-A150-UL	
NETWORK CAMERA	PNF-9010RV*, PNF-9010R*, PNF-9010RVM* (* is N or P: N = NTSC, P=PAL)	E158873-A151-UL	
NETWORK CAMERA	PNM-9020V* (* is N or P: N = NTSC, P=PAL)	E158873-A152-UL	
Network Video Recorder	PRN-4011* (* is N or P: N=NTSC, P=PAL)	E158873-A153-UL	
DIGITAL COLOR CAMERA	HCP-6320* (* is N or P: N = NTSC, P=PAL)	E158873-A154-UL	
DIGITAL COLOR CAMERA	HCP-6320H* (* is N or P: N = NTSC, P=PAL)	E158873-A155-UL	
NETWORK CAMERA	PNP-9200RH*, XNP-6370RH* (* is N or P: N=NT, P=PAL)	E158873-A156-UL	
NETWORK CAMERA	XNB-8000*, XNB-6000* (* is N or P: N = NTSC, P=PAL)	E158873-A157-UL	
NETWORK CAMERA	XNO-8080R*, XNO-6080R* (* is N or P: N = NTSC, P=PAL)	E158873-A158-UL	
NETWORK CAMERA	XNV-8040R*, XNV-8030R*, XNV-8020R*, XNV-6020*, XNV-6010* (* is N or P: N = NTSC, P=PAL)	E158873-A159-UL	
NETWORK CAMERA	XND-8040R*, XND-8030R*, XND-8020R*, XND-6020*, XND-6010* (* is N or P: N = NTSC, P=PAL)	E158873-A160-UL	

File		Volume	Page	Date:
E158873	Index	X1	6	09-Jul-19

NETWORK CAMERA	XNV-8080R* (* is N or P: N = NTSC, P=PAL) XNV-6080R* (* is N or P: N = NTSC, P=PAL) XNV-6080* (* is N or P: N = NTSC, P=PAL)	E158873-A161-UL	
NETWORK CAMERA	XND-8080RV*, XND-8080R*, XND-6080RV*, XND-6080R*, XND-6080V*, XND-6080* (* is N or P: N = NTSC, P=PAL)	E158873-A162-UL	
AHD Multi Directional Camera	HCM-9020VQ* (* is N or P: N = NTSC, P=PAL)	E158873-A163-UL	
NETWORK CAMERA	XNO-8020R*, XNO-8030R*, XNO-8040R*, XNO-6010R*, XNO-6020R* (* is N or P: N = NTSC, P=PAL)	E158873-A164-UL	
NETWORK CAMERA	XNV-6011* (* is N or P: N = NTSC, P=PAL)	E158873-A165-UL	
DIGITAL COLOR CAMERA	HCD-6080R*, HCD-6070R* (* is N or P: N = NTSC, P=PAL)	E158873-A167-UL	
DIGITAL COLOR CAMERA	HCV-6080R*, HCV-6070R* (* is N or P: N = NTSC, P=PAL)	E158873-A168-UL	
NETWORK CAMERA	XNP-6120H* (* is N or P: N = NTSC, P=PAL)	E158873-A169-UL	
NETWORK CAMERA	XND-8020F*, XND-6011F* (* is N or P: N = NTSC, P=PAL)	E158873-A170-UL	
NETWORK CAMERA	PNM-9080VQ* (* is N or P: N = NTSC, P = PAL)	E158873-A172-UL	
Network Storage	SRB-160S	E158873-A173-UL	
NETWORK CAMERA	TNB-6030* (* is N or P: N = NTSC, P = PAL)	E158873-A174-UL	
NETWORK CAMERA	PNM-9081VQ* (* is N or P: N = NTSC, P = PAL)	E158873-A176-UL	
NETWORK CAMERA	XNO-6085R* (* is N or P: N = NTSC, P=PAL)	E158873-A177-UL	
NETWORK CAMERA	XNB-6005* (* is N or P: N = NTSC, P=PAL)	E158873-A178-UL	
NETWORK VIDEO RECORDER	SNR-D5401N	E158873-A179-UL	
NETWORK CAMERA	XND-6085*, XND-6085V* (* is N or P: N = NTSC, P=PAL)	E158873-A180-UL	
NETWORK CAMERA	XNV-6085* (* is N or P: N = NTSC, P=PAL)	E158873-A181-UL	
NETWORK CAMERA	XNP-6040H* (* is N or P: N = NTSC, P=PAL)	E158873-A182-UL	
NETWORK VIDEO DECODER	SPD-150* (* is N or P: N = NTSC, P=PAL)	E158873-A184-UL	
DIGITAL COLOR CAMERA	HCB-6000*, HCB-7000* (* is N or P: N = NTSC, P=PAL)	E158873-A185-UL	
DIGITAL COLOR CAMERA	HCZ-6320* (* is N or P: N = NTSC, P=PAL)	E158873-A186-UL	
NETWORK CAMERA	XNF-8010RVM*, XNF-8010RV*, XNF-8010R* (* is N or P: N =	E158873-A187-UL	

File		Volume	Page	Date:
E158873	Index	X1	7	09-Jul-19

	NTSC, P=PAL)		
DIGITAL COLOR CAMERA	HCO-6070R*, HCO-6080R* (* is N or P: N = NTSC, P=PAL)	E158873-A188-UL	
NETWORK CAMERA	XNB-6001* (* is N or P: N = NTSC, P=PAL)	E158873-A189-UL	
DIGITAL COLOR CAMERA	HCO-7070R* (* is N or P: N = NTSC, P=PAL)	E158873-A190-UL	
LENS MODULE	SLA-T2480*, SLA-T2480V*, SLA-T4680*, SLA-T4680V* (* is N or P: N = NTSC, P=PAL), SLA-T4680D, SLA-T4680DW, SLA-T4680DS, SLA-T2415, SLA-T2815B.	E158873-A191-UL	
DIGITAL COLOR CAMERA	HCD-7070R* (* is N or P: N = NTSC, P=PAL)	E158873-A192-UL	
DIGITAL COLOR CAMERA	HCV-7070R* (* is N or P: N = NTSC, P=PAL)	E158873-A193-UL	
NETWORK VIDEO RECORDER	TRM-1610S	E158873-A194-UL	
LENS MODULE	SLA-T1080F* (* is N or P: N = NTSC, P=PAL)	E158873-A195-UL	
NETWORK SWITCH	SPN-10080P, SPN-10080PM	E158873-A196-UL	
ANALOG CAMERA	HCV-7010R*, HCV-7020R*, HCV-7030R* (* is N or P: N = NTSC, P=PAL)	E158873-A197-UL	
DIGITAL COLOR CAMERA	HCD-7010R*, HCD-7020R*, HCD-7030R* (* is N or P: N = NTSC, P=PAL)	E158873-A198-UL	
DIGITAL COLOR CAMERA	HCO-7010R*, HCO-7020R*, HCO-7030R* (* is N or P: N = NTSC, P=PAL)	E158873-A199-UL	
NETWORK CAMERA	XNP-6320, QNP-6230, XNP-6321	E158873-A200-UL	
NETWORK CAMERA	XNP-6320H, XNP-6320HS, QNP-6230H, XNP-6321H	E158873-A201-UL	
NETWORK THERMAL CAMERA	TNO-4050T, TNO-4030T, TNO-4040T	E158873-A202-UL	
NETWORK THERMAL CAMERA	TNO-4051T, TNO-4041T	E158873-A204-UL	
NETWORK CAMERA	XNV-6013M	E158873-A205-UL	
NETWORK CAMERA	XNV-6012M, XNV-6012	E158873-A206-UL	
NETWORK CAMERA	XNV-6022R, XNV-6022RM	E158873-A207-UL	
NETWORK CAMERA	LNO-6070R, LNO-6071R	E158873-A208-UL	
NETWORK CAMERA	LNO-6030R, LNO-6020R, LNO-6010R, LNO-6031R, LNO-6021R, LNO-6011R, LNO-6011RW	E158873-A209-UL	
NETWORK CAMERA	LNV-6070R	E158873-A210-UL	
NETWORK CAMERA	LND-6070R, LND-6071R	E158873-A213-UL	
NETWORK CAMERA	LNV-6030R, LNV-6020R, LNV-6010R, LNV-6031R, LNV-6021R, LNV-6011R	E158873-A214-UL	

File		Volume	Page	Date:
E158873	Index	X1	8	09-Jul-19

NETWORK CAMERA	LND-6030R, LND-6020R, LND-6010R	E158873-A215-UL	
NETWORK CAMERA	XNV-L6080R, XNV-L6080	E158873-A216-UL	
NETWORK CAMERA	XND-L6080RV, XND-L6080R, XND-L6080V	E158873-A217-UL	
NETWORK CAMERA	XNO-L6080R	E158873-A218-UL	
NETWORK CAMERA	PNM-7000VD	E158873-A220-UL	
NETWORK VIDEO ENCODER	SPE-410, SPE-410A* (* is Blank or N or P, N = NTSC, P = PAL)	E158873-A222-UL	
NETWORK VIDEO ENCODER	SPE-1610, SPE-1610A* (* is Blank or N or P, N = NTSC, P = PAL), NVE3016	E158873-A223-UL	
NETWORK POSITIONING CAMERA	TNU-6320	E158873-A224-UL	
Network Video Recorder	QRN-1610S	E158873-A225-UL	
NETWORK CAMERA	QNE-7080RV, QNE-6080RV	E158873-A226-UL	
NETWORK CAMERA	PNM-9000VQ	E158873-A227-UL	
Network Camera	XNP-6550RH, XNP-6320RH, XNP-6250RH	E158873-A229-UL	
NETWORK CAMERA	PNM-9320VQP, PNM-9321VQP.	E158873-A230-UL	
NETWORK CAMERA	XNZ-6320	E158873-A231-UL	
NETWORK ENCODER	SPE-110N, SPE-110A* (* is Blank or N or P, N = NTSC, P = PAL)	E158873-A232-UL	
THERMAL POSITIONING CAMERA	TNU-4041T, TNU-4051T	E158873-A233-UL	
NETWORK CAMERA	PNM-9030V	E158873-A234-UL	
NETWORK CAMERA	TNV-7010RC	E158873-A235-UL	
NETWORK CAMERA	XND-8081VZ, XND-8081FZ, XND-6081VZ, XND-6081FZ	E158873-A236-UL	
DIGITAL COLOR CAMERA	HCF-8010V	E158873-A239-UL	
ANALOG CAMERA	HCO-6020R	E158873-A241-UL	
NETWORK CAMERA	XNV-6081, XNV-6081R, XNV-8081R	E158873-A242-UL	
NETWORK VIDEO RECORDER	TRM-810S, TRM-410S	E158873-A243-UL	
ANALOG CAMERA	HCD-6020R, HCD-6010	E158873-A244-UL	
NETWORK CAMERA	XND-6081V, XND-6081F, XND-6081RV, XND-6081RF, XND-8081RV, XND-8081RF	E158873-A245-UL	
NETWORK CAMERA	XND-L6080	E158873-A246-UL	
NETWORK CAMERA	TNO-6010M	E158873-A247-UL	
ANALOG CAMERA	SCO-6085R	E158873-A248-UL	
NETWORK CAMERA	PNM-9000VD	E158873-A249-UL	
NETWORK CAMERA	QND-6083R, QND-6082R, QND-6073R, QND-6072R, QND-6032R, QND-6022R, QND-6012R	E158873-A250-UL	

File		Volume	Page	Date:
E158873	Index	X1	9	09-Jul-19

NETWORK CAMERA	QNE-8021R, QNE-8011R	E158873-A251-UL	
NETWORK CAMERA	QND-8021, QND-8011	E158873-A252-UL	
NETWORK CAMERA	QNO-8080R, QNO-8010R, QNO-8020R, QNO-8030R	E158873-A253-UL	
NETWORK CAMERA	QND-6021, QND-6011	E158873-A254-UL	
NETWORK CAMERA	QNO-6083R, QNO-6082R, QNO-6012R, QNO-6022R, QNO-6032R, QNO-6072R, QNO-6073R	E158873-A255-UL	
NETWORK CAMERA	QNV-6083R, QNV-6082R, QNV- 6073R, QNV-6072R, QNV- 6012R, QNV-6022R, QNV- 6032R	E158873-A256-UL	
NETWORK CAMERA	QNV-8080R, QNV-8010R, QNV- 8020R, QNV-8030R	E158873-A257-UL	
NETWORK CAMERA	QND-8080R, QND-8010R, QND-8020R, QND-8030R	E158873-A258-UL	
NETWORK CAMERA	QNF-8010	E158873-A259-UL	

CERTIFICATE OF COMPLIANCE

Certificate Number 20190717-E158873
Report Reference E158873-A259-UL
Issue Date 2019-JULY-17

Issued to: Hanwha Techwin Co Ltd
6, Pangyo-ro 319beon-gil, Bundang-gu
Seongnam-si Gyeonggi-do 13488 KOREA

This certificate confirms that representative samples of Information Technology Equipment Including Electrical Business Equipment
Network Camera, Model: QNF-8010

Have been investigated by UL in accordance with the Standard(s) indicated on this Certificate.

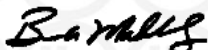
Standard(s) for Safety: UL 60950-1 and CAN/CSA C22.2 No. 60950-1-07,
Information Technology Equipment - Safety - Part 1:
General Requirements

Additional Information: See the UL Online Certifications Directory at
<https://iq.ulprospector.com> for additional information.

This *Certificate of Compliance* does not provide authorization to apply the UL Mark. Only the UL Follow-Up Services Procedure provides authorization to apply the UL Mark.

Only those products bearing the UL Mark should be considered as being UL Certified and covered under UL's Follow-Up Services.

Look for the UL Certification Mark on the product.



Bruce Mahrenholz, Director North American Certification Program
UL LLC

Any information and documentation involving UL Mark services are provided on behalf of UL LLC (UL) or any authorized licensee of UL. For questions, please contact a local UL Customer Service Representative at <http://ul.com/aboutul/locations/>



UL TEST REPORT AND PROCEDURE

Standard:	UL 60950-1, 2nd Edition, 2014-10-14 (Information Technology Equipment - Safety - Part 1: General Requirements) CAN/CSA C22.2 No. 60950-1-07, 2nd Edition, 2014-10 (Information Technology Equipment - Safety - Part 1: General Requirements)
Certification Type:	Listing
CCN:	NWGG, NWGG7 (Information Technology Equipment Including Electrical Business Equipment)
Product:	NETWORK CAMERA
Model:	QNF-8010
Rating:	PoE (48 Vdc), 0.14 A.
Applicant Name and Address:	HANWHA TECHWIN CO LTD 6, PANGYO-RO 319BEON-GIL, BUNDANG-GU SEONGNAM-SI KOREA, REPUBLIC OF

This is to certify that representative samples of the products covered by this Test Report have been investigated in accordance with the above referenced Standards. The products have been found to comply with the requirements covering the category and the products are judged to be eligible for Follow-Up Service under the indicated Test Procedure. The manufacturer is authorized to use the UL Mark on such products which comply with this Test Report and any other applicable requirements of UL LLC ('UL') in accordance with the Follow-Up Service Agreement. Only those products which properly bear the UL Mark are considered as being covered by UL's Follow-Up Service under the indicated Test Procedure.

The applicant is authorized to reproduce the referenced Test Report provided it is reproduced in its entirety.

Any information and documentation involving UL Mark services are provided on behalf of UL LLC (UL) or any authorized licensee of UL.

Prepared by: Sungil Kim

Reviewed by: Seungtae Kim

Supporting Documentation

The following documents located at the beginning of this Procedure supplement the requirements of this Test Report:

- A. Authorization - The Authorization page may include additional Factory Identification Code markings.
- B. Generic Inspection Instructions -
 - i. Part AC details important information which may be applicable to products covered by this Procedure. Products described in this Test Report must comply with any applicable items listed unless otherwise stated in the body of this Test Report.
 - ii. Part AE details any requirements which may be applicable to all products covered by this Procedure. Products described in this Test Report must comply with any applicable items listed unless otherwise stated in the body of each Test Report.
 - iii. Part AF details the requirements for the UL Certification Mark which is not controlled by the technical standard used to investigate these products. Products are permitted to bear only the Certification Mark(s) corresponding to the countries for which it is certified, as indicated in each Test Report.

Product Description

A NETWORK CAMERA intended for indoor use.

Electronic components were mounted on PWB, housed in plastic and metal enclosure supplied by PoE.
(Supplied by SELV, LPS)

Model Differences

N/A

Technical Considerations

- Equipment mobility : Fixed
- Connection to the mains : N/A
- Operating condition : continuous
- Access location : operator accessible
- Over voltage category (OVC) : OVC I
- Mains supply tolerance (%) or absolute mains supply values : No direct connection
- Tested for IT power systems : No
- IT testing, phase-phase voltage (V) : N/A
- Class of equipment : Class III (supplied by SELV)
- Considered current rating of protective device as part of the building installation (A) : N/A
- Pollution degree (PD) : PD 2
- IP protection class : IP X0
- Altitude of operation (m) : less than 2000 meters
- Altitude of test laboratory (m) : less than 2000 meters
- Mass of equipment (kg) : 0.318
- The product was submitted and evaluated for use at the maximum ambient temperature (Tma) permitted by the manufacturer's specification of: 55 °C
- The following are available from the Applicant upon request: Installation (Safety) Instructions / Manual

Additional Information

Original (4789030365)

- Maximum normal load: Continuous operation.

Additional Standards

The product fulfills the requirements of: N/A

Markings and instructions

Clause Title	Marking or Instruction Details
Power rating - Ratings	Ratings (voltage, frequency/dc, current)
Power rating - Company identification	Listee's or Recognized company's name, Trade Name, Trademark or File Number
Power rating - Model	Model Number
Replaceable batteries	"CAUTION: Risk of Explosion if Battery is replaced by an Incorrect Type. Dispose of Used Batteries According to the Instructions."
Manual -1	This product is intended to be supplied by a Listed Power Supply Unit marked "Class 2" or "LPS" and rated from PoE(48V), 0.14 A.
Manual -2	The wired LAN hub providing power over the Ethernet (PoE) in accordance with IEEE 802-3af shall be a UL Listed device with the output evaluated as a Limited Power Source as defined in UL60950-1.
Manual -3	Unit is intended for installation in a Network Environment 0 as defined in IEC TR 62102. As such, associated Ethernet wiring shall be limited to inside the building.

Special Instructions to UL Representative

N/A

Production-Line Testing Requirements

Electric Strength Test Special Constructions - Refer to Generic Inspection Instructions, Part AC for further information.

Model	Component	Removable Parts	Test probe location	V rms	V dc	Test Time, s
N/A	N/A	N/A	N/A	N/A	N/A	N/A

Earthing Continuity Test Exemptions - This test is not required for the following models:

All models

Electric Strength Test Exemptions - This test is not required for the following models:

All models

Electric Strength Test Component Exemptions - The following solid-state components may be disconnected from the remainder of the circuitry during the performance of this test:

Sample and Test Specifics for Follow-Up Tests at UL

Model	Component	Material	Test	Sample(s)	Test Specifics
N/A					

1.5.1	TABLE: list of critical components					Pass
Object/part or Description	Manufacturer/ trademark	type/model	technical data	Product Category CCN(s)	Required Marks of Conformity	Supplement ID
External Enclosure (Plastic)	COVESTRO DEUTSCHLAND AG [PC RESINS]	6165 X + (z)(f1)	Min. 1.2 mm thickness, rated Min. V-0, 115 deg.C, See enclosure for dimension.	QMFZ2/8	UL (E41613)	
Internal Cover	LOTTE ADVANCED MATERIALS CO LTD	NH-1035(+)	Min. 1.7 mm thickness, rated Min. V-0, 80 deg.C, See enclosure for dimension.	QMFZ2/8	UL (E115797)	
Internal Top Cover	Interchangeable	Interchangeable	Aluminium, Min. 1.0 mm thickness.	-	-	
Internal Bottom Cover	Interchangeable	Interchangeable	Aluminium, Min. 1.1 mm thickness.	-	-	
Transformer(T2)	SHENZHEN GROUP-TEK ELECTRONICS TECHNOLOGY CO LTD	PDT2431SR	130 deg.C, See enclosure for more detail.	-	-	
Optocoupler (LS1)	LITE-ON TECHNOLOGY CORP	LTV-356T(%)(c)	Isolation Voltage: 3750. Max. Operation Temperature:110 deg.C	FPQU2/8	UL (E113898)	
Lithium Battery (BAT1)	SEIKO INSTRUMENTS INC MICRO-ENERGY DIV	ML414H	Lithium (Coin), Rechargeable, Max. Charging Voltage: 3.4 Vdc, Max. Charging Current: 300 mAh	BBCV2	UL (MH15628)	
Connectors and Receptacles (Secondary circuits)	Interchangeable	Interchangeable	-	ECBT2 or RTRT2	UL	
Connectors and Receptacles (Secondary circuits) (alternate)	Interchangeable	Interchangeable	Copper alloy pins housed in bodies of plastic rated Min. V-2	QMFZ2	UL	
Thermal Pad	KOMOTECH CO LTD	KGP-1(a)	Min. 0.2 mm thickness, rated V- 0, 150 deg.C	QMFZ2	UL (E245303)	
PWB	Interchangeable	Interchangeable	Min. V-0, 130 deg.C.	ZPMV2	UL	
Label	Interchangeable	Interchangeable	Min.55 deg. C if max. surface temperature not specified.	PGDQ2 or PGJ12	UL	

Issue Date: 2019-07-09

Page 6 of 7

Report Reference #

E158873-A259-UL

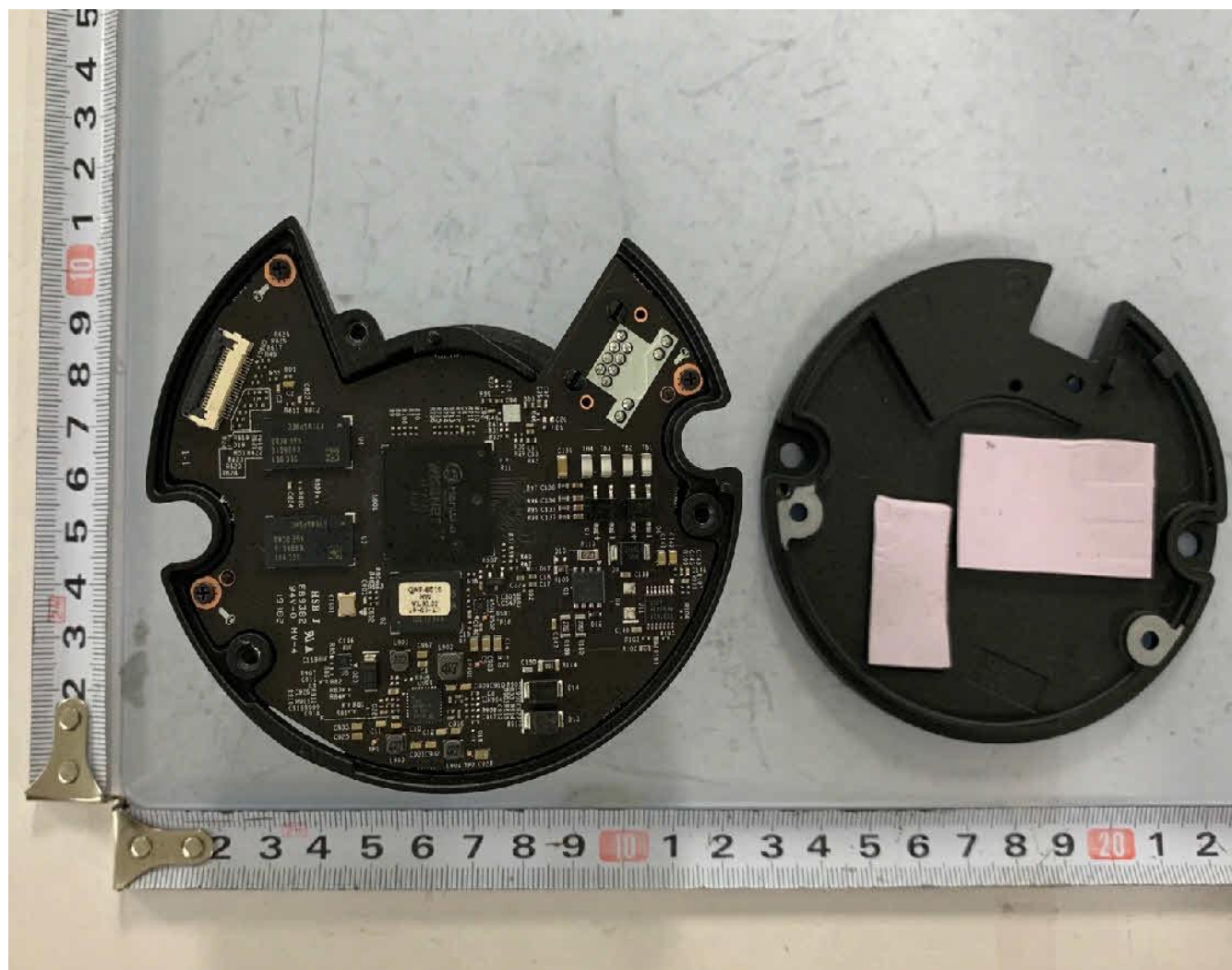
Enclosures

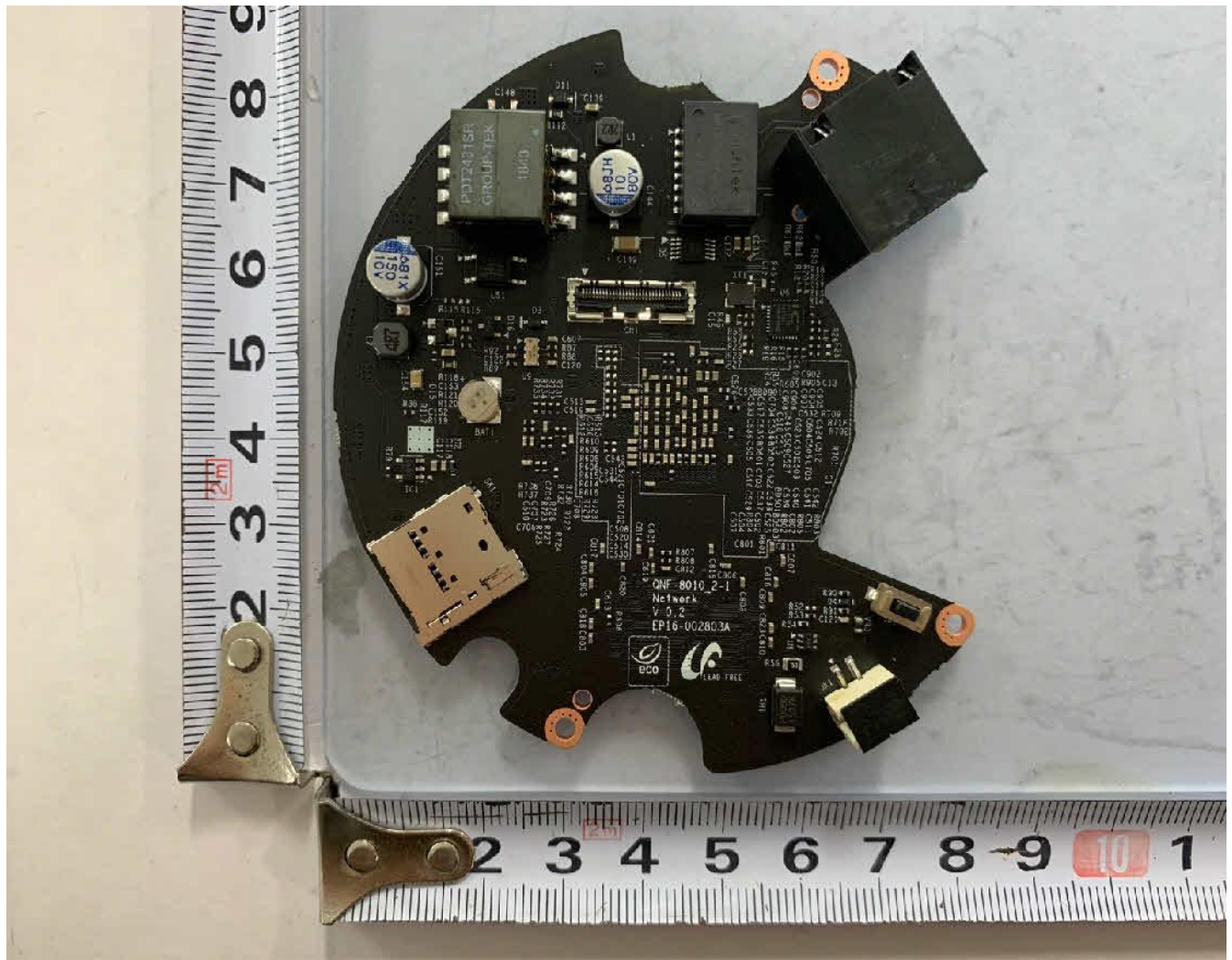
<u>Type</u>	<u>Supplement Id</u>	<u>Description</u>
Photographs	3-01	Front
Photographs	3-02	Rear
Photographs	3-03	Internal -1
Photographs	3-04	Internal -2
Photographs	3-05	Main board (Top)
Photographs	3-06	Main board (Bottom)
Manuals	6-01	Manual
Miscellaneous	7-01	Enclosure dimension
Miscellaneous	7-02	Transformer (T2) spec
Miscellaneous	7-04	Label (representative)
Miscellaneous	7-05	Dual language safety labeling CRD

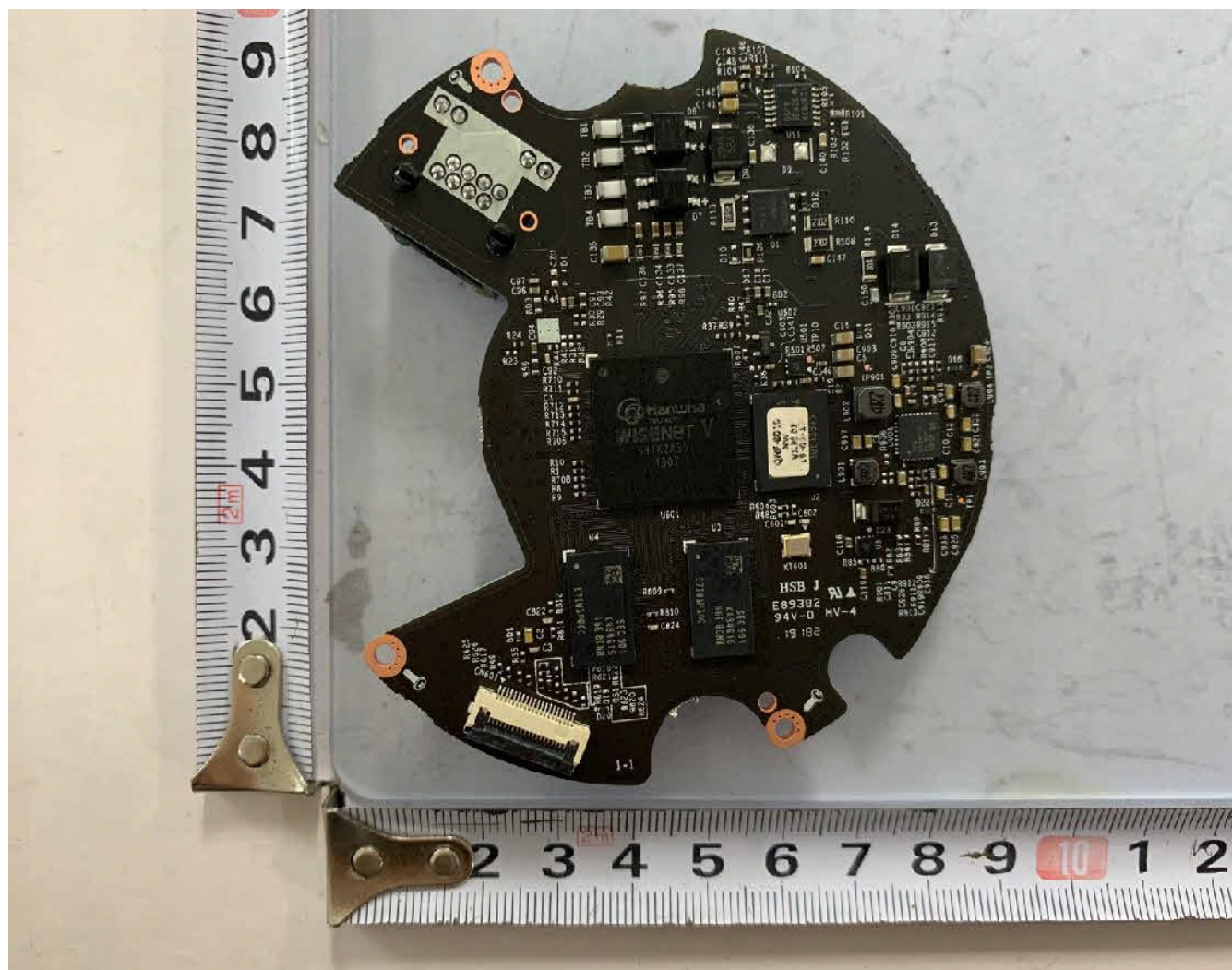












overview

IMPORTANT SAFETY INSTRUCTIONS

1. Read these instructions.
2. Keep these instructions.
3. Heed all warnings.
4. Follow all instructions.
5. Do not use this apparatus near water.
6. Clean the contaminated area on the product surface with a soft, dry cloth or a damp cloth.
(Do not use a detergent or cosmetic products that contain alcohol, solvents or surfactants or oil constituents as they may deform or cause damage to the product.)
7. Do not block any ventilation openings. Install in accordance with the manufacturer's instructions.
8. Do not install near any heat sources such as radiators, heat registers, stoves, or other apparatus (including amplifiers) that produce heat.
9. Do not defeat the safety purpose of the polarized or grounding-type plug. A polarized plug has two blades with one wider than the other. A grounding type plug has two blades and a third grounding prong. The wide blade or the third prong are provided for your safety. If the provided plug does not fit into your outlet, consult an electrician for replacement of the obsolete outlet.
10. Protect the power cord from being walked on or pinched particularly at plugs, convenience receptacles, and the point where they exit from the apparatus.
11. Only use attachments/ accessories specified by the manufacturer.
12. Use only with the cart, stand, tripod, bracket, or table specified by the manufacturer, or sold with the apparatus. When a cart is used, use caution when moving the cart/ apparatus combination to avoid injury from tip-over.
13. Unplug this apparatus during lightning storms or when unused for long periods of time.
14. Refer all servicing to qualified service personnel. Servicing is required when the apparatus has been damaged in any way, such as power-supply cord or plug is damaged, liquid has been spilled or objects have fallen into the apparatus, the apparatus has been exposed to rain or moisture, does not operate normally, or has been dropped.
15. This product is intended to be supplied by a Listed Power Supply Unit marked "Class 2" or "LPS" and rated from PoE(48V), 0.14A.
16. This product is intended to be supplied by isolation power.
17. If you use excessive force when installing the product, the camera may be damaged and malfunction. If you forcibly install the product using non-compliant tools, the product may be damaged.
18. Do not install the product in a place where chemical substances or oil mist exists or may be generated. As edible oils such as soybean oil may damage or warp the product, do not install the product in the kitchen or near the kitchen table.
This may cause damage to the product.
19. When installing the product, be careful not to allow the surface of the product to be stained with chemical substance.
Some chemical solvents such as cleaner or adhesives may cause serious damage to the product's surface.
20. If you install/disassemble the product in a manner that has not been recommended, the production functions/ performance may not be guaranteed.
Install the product by referring to "Installation & connection" in the user manual.
21. Installing or using the product in water can cause serious damage to the product.



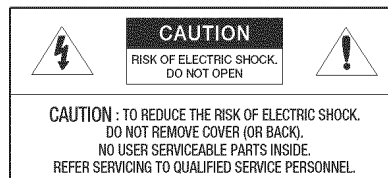
WARNING

TO REDUCE THE RISK OF FIRE OR ELECTRIC SHOCK, DO NOT EXPOSE THIS PRODUCT TO RAIN OR MOISTURE. DO NOT INSERT ANY METALLIC OBJECT THROUGH THE VENTILATION GRILLS OR OTHER OPENINGS ON THE EQUIPMENT.

Apparatus shall not be exposed to dripping or splashing and that no objects filled with liquids, such as vases, shall be placed on the apparatus.

To prevent injury, this apparatus must be securely attached to the Wall/ceiling in accordance with the installation instructions.

CAUTION



EXPLANATION OF GRAPHICAL SYMBOLS



The lightning flash with arrowhead symbol, within an equilateral triangle, is intended to alert the user to the presence of "dangerous voltage" within the product's enclosure that may be of sufficient magnitude to constitute a risk of electric shock to persons.



The exclamation point within an equilateral triangle is intended to alert the user to the presence of important operating and maintenance (servicing) instructions in the literature accompanying the product.

overview

Class I construction

An apparatus with CLASS I construction shall be connected to a MAINS socket outlet with a protective earthing connection.

Battery

Batteries (battery pack or batteries installed) shall not be exposed to excessive heat such as sunshine, fire or the like.

The battery cannot be replaced.

Disconnection Device

Disconnect the main plug from the apparatus, if it's defected. And please call a repair man in your location.

When used outside of the U.S., it may be used HAR code with fittings of an approved agency is employed.

CAUTION

RISK OF EXPLOSION IF BATTERY IS REPLACED BY AN INCORRECT TYPE.
DISPOSE OF USED BATTERIES ACCORDING TO THE INSTRUCTIONS.

ATTENTION

IL Y A RISQUE D'EXPLOSION SI LA BATTERIE EST REMPLACÉE PAR UNE BATTERIE DE TYPE INCORRECT.
METTRE AU REBUT LES BATTERIES USAGÉES CONFORMÉMENT AUX INSTRUCTIONS.

These servicing instructions are for use by qualified service personnel only.
To reduce the risk of electric shock do not perform any servicing other than that contained in the operating instructions unless you are qualified to do so.

The CVBS out terminal of the product is provided for easier installation, and is not recommended for monitoring purposes.

Please use the input power with just one camera and other devices must not be connected.

The ITE is to be connected only to PoE networks without routing to the outside plant.

The wired LAN hub providing power over the Ethernet (PoE) in accordance with IEEE 802-3af shall be a UL Listed device with the output evaluated as a Limited Power Source as defined in UL60950-1.

Unit is intended for installation in a Network Environment 0 as defined in IEC TR 62102.
As such, associated Ethernet wiring shall be limited to inside the building.

Please read the following recommended safety precautions carefully.

- Do not place this apparatus on an uneven surface.
- Do not install on a surface where it is exposed to direct sunlight, near heating equipment or heavy cold area.
- Do not place this apparatus near conductive material.
- Do not attempt to service this apparatus yourself.
- Do not place a glass of water on the product.
- Do not install near any magnetic sources.
- Do not block any ventilation openings.
- Do not place heavy items on the product.
- Please wear protective gloves when installing/removing the camera.
The high temperature of the product surface may cause a burn.

User's Manual is a guidance book for how to use the products.


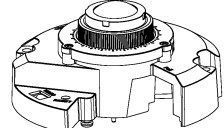
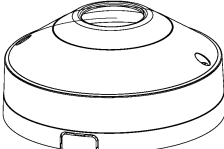
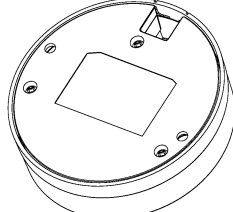
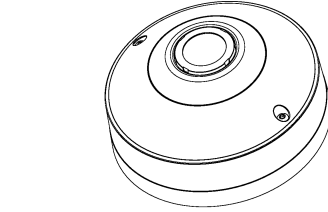
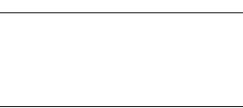
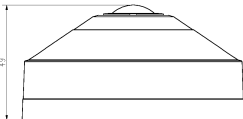
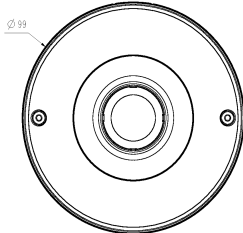
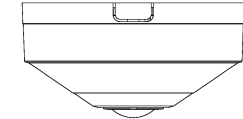
The meaning of the symbols are shown below.

- Reference : In case of providing information for helping of product's usages
- Notice : If there's any possibility to occur any damages for the goods and human caused by not following the instruction

※ Please read this manual for the safety before using of goods and keep it in the safe place.

This parts should not contain any substances which are specified in MSDS-00338

NO	PART NAME	CODE NO.	MATERIAL	QTY	REMARK
	ASSY_TOTAL.QNF	066447	MATERIAL	1	REMARK



STANDARD TOLERANCE					
DIY	10.1	10.2	10.3	10.4	10.5
0-16	0.0	0.1	0.1	0.2	0.3
16-40	0.0	0.1	0.2	0.3	0.4
40-100	0.1	0.2	0.3	0.4	0.5
100-1000	0.2	0.3	0.4	0.5	0.6

A2




CHANGE

UNIT	MM	DESIGN	CHECK	APPROVAL	PART NAME	ASSY_TOTAL.QNF
SCALE	1/1	Design	Check	Approval	MODEL NAME	MODEL NAME
Hanwha Techwin		CODE NO.	066447			

GROUP-TEK[®]

承认书

SPECIFICATION FOR APPROVAL

客户名称 CUSTOMER	
客户料号 MODEL NO.	
产品名称 PART NAME	POWER TRANSFORMER
产品型号 PART TYPE	PDT2431SR
版本 REV	X2
签名 SIGNATURE	制图:  2017-06-22 审核:  2017-06-22 批准:  2017-06-22 Drawn by 黄春梅 Checked by 杨时启 Approved by 欧阳伯萍
客户承认 CUSTOMER APPROVAL	承认印: SIGNET <div style="float: right;"> 签名: SIGNATURE </div>

深圳市联泰兴电子科技有限公司**SHENZHEN GROUP-TEK ELECTRONICS TECHNOLOGY CO., LTD**

地址: 深圳市宝安区石岩街道应人石工业区伟泰路 1 栋 (P. C: 518108)

ADD: No.1 Block, WeiTai Rd. Ying Ren Shi Industry Park, Shi Yan Sub-District, Bao'An ShenZhen.

TEL: +86-755-29810619 29810976 FAX: +86-755-29810159

Http://www.group-tek.com E-mail:sale1@group-tek.com

PDT2431SR

1.Revision History:

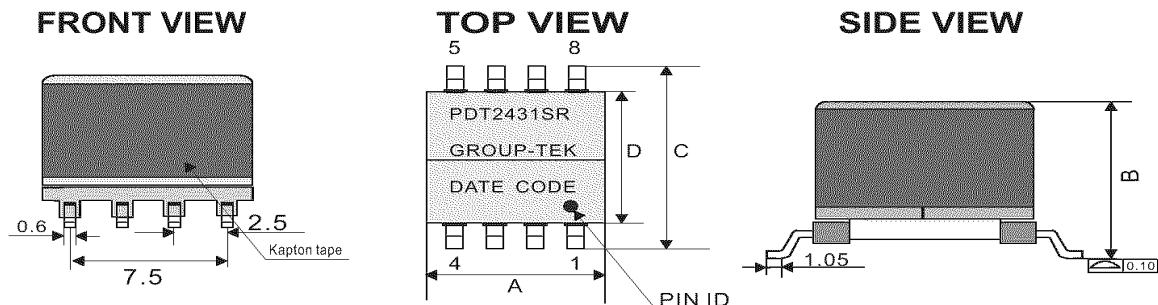
[illegible]

GROUP-TEK[®]

A Leading Supplier of Magnetic Components

PDT2431SR

2. Mechanical Dimensions:



Note:

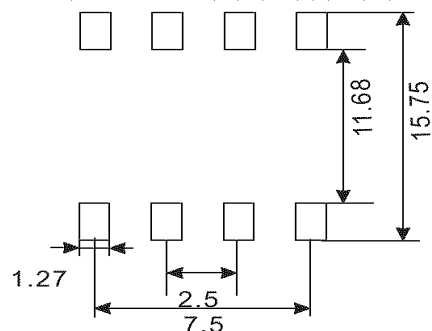
1.Wrap 2Ts of 6mm tape around the finished part.

Unit: mm

A MAX	B MAX	C MAX	D TYP
12.7	11.43	15.24	10.60

SUGGESTED PAD LAYOUT


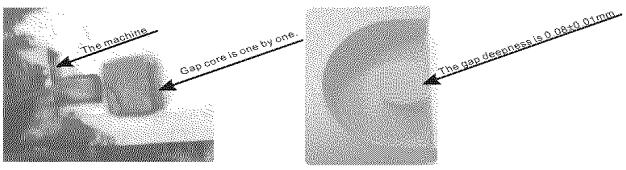
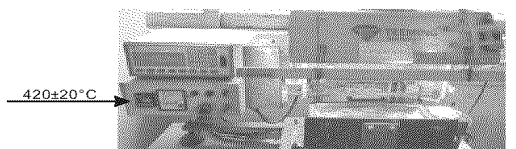
Unit: mm Tolerances: +/-0.2



3. Electrical Characteristics :

Specifications Test: at 25 °C. Operating Temperature: -40 to +105°C			
NO.	ITEM	TEST CONDITION	SPECIFICATION
1	Inductance	(3-4)@200kHz, 0.1v	155uH+/-10%.
2	Inductance	(2-1)@200kHz, 0.1v	30uH+/-15%.
3	Inductance	(7-5)/(8-6)@200kHz, 0.1v	5.3uH+/-15%.
4	Leakage Inductance	(3-4) with shorted other@200kHz, 0.1v	3.6uH MAX.
5	DCR	(3-4) @ 25°C	0.414 Ω Max.
6		(7+8)-(5+6) @ 25°C	0.06Ω Max.
7		(2-1) @ 25°C	0.822Ω Max.
8	HI-POT	PRI TO SEC	1500Vac 1mA 3Sec.
9	T/R	(3-4):(9+10-7+8):(2-1)	33:6:14±2%.

4.Overhauling List.

NO.	ITEM	SPECIFICATION
1	Tape turns	2T
2	Margin tape thickness	0.15mm
3	Winding turns	N1:33T N2:6T N3:14T
4	Pins order/Pin connection .	1T
5	Marking Information	<div style="border: 1px solid black; padding: 5px; display: inline-block;"> PDT2431SR GROUP-TEK DATE CODE  </div>
6	Gap the center leg	
7	Solder Temperature	

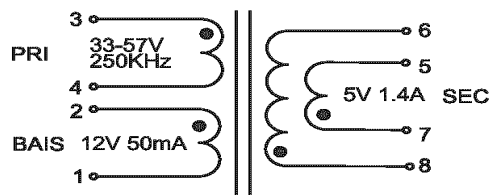
5. Winding Information:

WINDING SEQ.	ST-FN	WIRE/FOIL	TURNS	WRAP INSUL.	MARGIN TAPE	SLEEVE	NOTE
1	3--4	0.30mm 2UEW	33	2T w6.0mm	N/A	N/A	1
2	8--6 7--5	0.30mm 2UEW R 0.30mm 2UEW N	6	2T w6.0mm	2T W0.80mm	N/A	1
3	2--1	0.23mm 2UEW	14	2T w6.0mm	2T W0.80mm	N/A	1

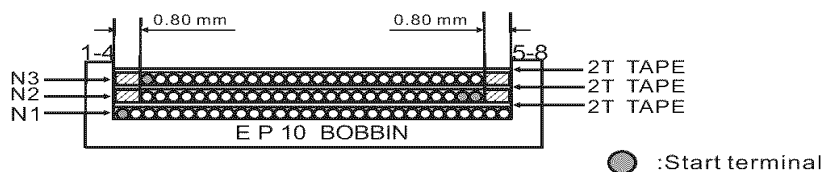
NOTE :

1. -Place the bobbin pin 1 right side of operator.

6. Schematic:



7. Winding construction



GROUP-TEK®

A Leading Supplier of Magnetic Components

PDT2431SR

8. Material List

NO.	ITEM.	MATERIALS	SUPPLIERS/MANUFACTURES	UL FILE NO.
1	BOBBIN	PHENOLIC T375J UL RATING: 94V-0 THERMAL RATING:150°C	CHANG CHUN PLASTIC CO LTD.	QMFZ2.E59481
2	CORE	Ep10 PG232A	High-tech Electronics Co.,Ltd.	N/A
3	WIRE	POLYURETHANE ENAMELED TYPE NO.: 2UEW 0.23mm 0.30mm THERMAL RATING:180°C	Shing Shun Magnet wire(HuiZhou) Co.,Ltd	E255839
4	TAPE	ADHESIVE POLYESTER TAPE TYPE NO.:W-001 THERMAL RATING:130°C yellow tape: for inner coils	Shen zhen Weichuangda Packing material Co.,Ltd	E333581
5	TAPE	DHESIVE POLYESTER TAPE TYPE NO.:519(kapton tape) THERMAL RATING:200°C Kapton tape: for outside of core	Shen zhen yanda electronic Technology Co.,Ltd	E309332
6	SOLDER	SN/CU: 99.3/0.7	Gao Xin stannum industry Co.,Ltd	N/A
7	Glue	E-500(xx) E-504H-1 THERMAL RATING:130°C	Dong Guan city eatto electronic material Co.,Ltd	E218090
8	INK	VIC-120	Shenshen Huarui samwo group Co.,Ltd	N/A

9. PACKING INFORMATION:

DESCRIPTION	QTY
PIECES PER REEL	250
PIECES PER POCKET	1
PIECES PER BOX	750
REEL PER BOX	3
GROSS WEIGHT PER BOX(KG)	TBD
NET WEIGHT PER BOX(KG)	TBD

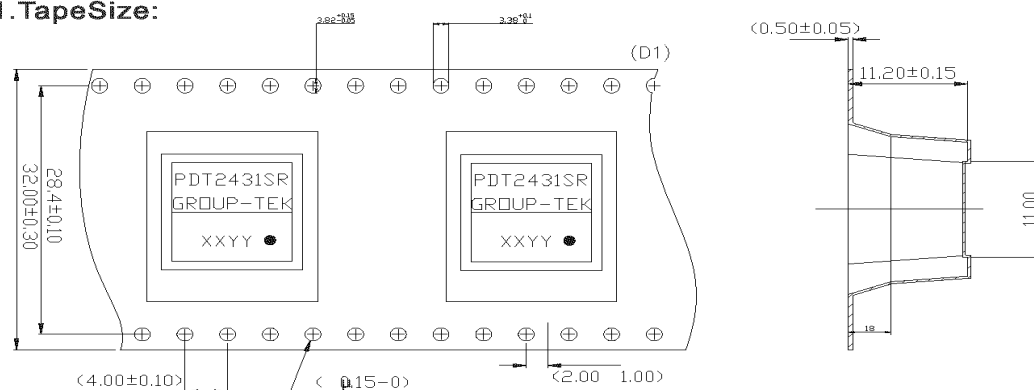
GROUP-TEK[®]

A Leading Supplier of Magnetic Components

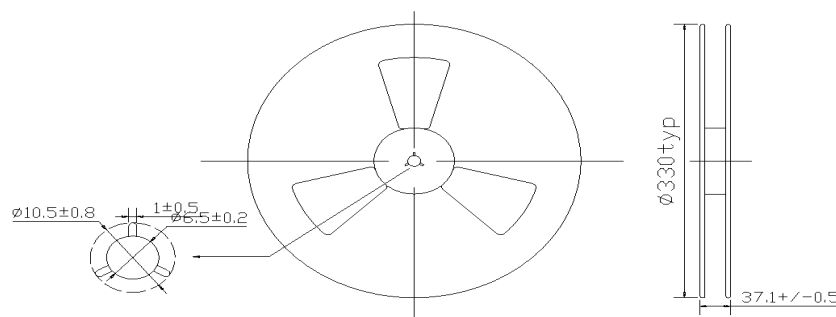
PDT2431SR

Tape and Reel Package (包装图)

1. Tape Size:



2. Reel Size:



3. Packaging:

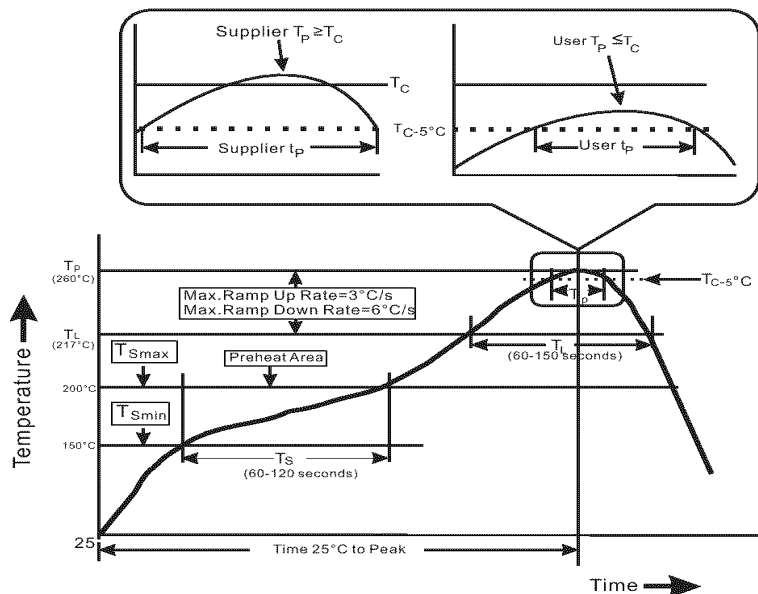
- 3.1 Quantity per reel: 250pcs.
- 3.2 Quantity per carton: 750pcs.
- 3.3 Carton size: 37.3*37.3*21CM3.
- 3.4 Unit weight: 3.95g.
- 3.5 Carton weight: 5.11kg.

GROUP-TEK®

A Leading Supplier of Magnetic Components

PDT2431SR

1. Recommended Lead Free IR Reflow Curve



Item	Profile Feature	Sn-Pb Eutectic Assembly	Pb-Free Assembly
1	Preheat/Soak Temperature Min (Tsmin) Temperature Max (Tsmax) Time (ts) from (Tsmin to Tsmax)	100 °C 150 °C 60-120 seconds	150 °C 200 °C 60-120 seconds
2	Ramp-up rate (TL to Tp)	3 °C/second max.	3 °C/second max.
3	Liquidous temperature (TL) Time (tl) maintained above TL	183 °C 60-150 seconds	217 °C 60-150 seconds
4	Peak package body temperature (Tp)	For users Tp must not exceed the Classification temp in Table 4-1 (IPC/JEDEC J-STD-020D.1). For suppliers Tp must equal or exceed the Classification temp in Table 4-1 (IPC/JEDEC J-STD-020D.1).	
5	Time (tp)* within 5 °C of the specified classification temperature (Tc), see Figure 5-1 (IPC/JEDEC J-STD-020D.1).	20* seconds	30* seconds
6	Ramp-down rate (Tp to TL)	6 °C/second max.	6 °C/second max.
7	Time 25 °C to peak temperature	6 minutes max.	8 minutes max.

* Tolerance for peak profile temperature (Tp) is defined as a supplier minimum and a user maximum.

Note:

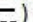
- 1: All temperatures refer to the center of the package, measured on the package body surface that is facing up during assembly reflow (e.g., live-bug). If parts are reflowed in other than the normal live-bug assembly reflow orientation (i.e., dead-bug), T_p shall be within $\pm 2^\circ\text{C}$ of the live-bug T_p and still to accurately measure actual peak package body temperatures refer to JEP140 for recommended thermocouple use. meet the T_c requirements, otherwise, the profile shall be adjusted to achieve the latter.
- 2: Reflow profiles in this document are for classification/preconditioning and are not meant to specify board assembly profiles. Actual board assembly profiles should be developed based on specific process needs and board designs and should not exceed the parameters in Table 5-2. For example, if T_c is 260°C and time t_p is 30 seconds, this means the following for the supplier and the user. For a supplier: The peak temperature must be at least 260°C . The time above 255°C must be at least 30 seconds. For a user: The peak temperature must not exceed 260°C . The time above 255°C must not exceed 30 seconds.
- 3: All components in the test load shall meet the classification profile requirements.
- 4: SMD packages classified to a given moisture sensitivity level by using Procedures or Criteria defined within any previous version of J-STD-020, JESD22-A112 (rescinded), IPC-SM-786 (rescinded) do not need to be reclassified to the current revision unless a change in classification level or a higher peak classification temperature is desired.

2. Reliability Test Criteria.

- 2.1 Operating temperature range: 0°C to 70°C
- 2.2 Terminal strength: Pull test withstand $9.8\text{N } 60\pm 0.5\text{S}$ no looseness or movement.
- 2.3 Solderability: Dipped in $245^\circ\text{C} \pm 5^\circ\text{C}$ molten solder for 3 ± 0.5 seconds, 95% min shall be smooth any and bright
- 2.4 Resistance to soldering heat : Convection reflow condition setting: peak temperature at $260^\circ\text{C} \pm 5^\circ\text{C}$ above 217°C for 60-150 seconds, ramp-up rate $2-3^\circ\text{C/s}$. Ramp-down rate 6°C/s Max. No mechanical problem found. No electrical failure found per our specification.
- 2.5 Vibration: 1.5mm amplitude total excursion 10-55-10 Hz traversed in 1 minute, x.y.z, axis for 2 hours. Shall not be any abnormality.
- 2.6 Random drop (Packing condition): Height 60cm, 3 times on the wood floorboard, shall not be any abnormality.
- 2.7 Damp Heat: $60\pm 2^\circ\text{C}$, $93\pm 3\%$ RH 96 hours.
- 2.8 Change of temperature: exposed 5 cycle; each consisting of 30 minutes at $-20\pm 2^\circ\text{C}$, 2-3 minutes at $20\pm 2^\circ\text{C}$, 30 minutes at $85\pm 2^\circ\text{C}$, 2-3 minutes at $20\pm 2^\circ\text{C}$.

Remarks:

After reliability test per item 7,8,9,10 in prior to the test as specified, the transformer / coil would be exposed to the room temperature for 1-2 hours, the component meets all requirements according to this specification.

QNF-8010 KAP 아중동**M/C: QNF-8010/KAP****S/N: [제조번호]****MAC: XX-XX-XX-XX-XX-XX****MAC ADDRESS: XX-XX-XX-XX-XX-XX****NETWORK CAMERA****MODEL: QNF-8010****PoE (48V ) 0.14A****M/C: QNF-8010/KAP Fac. ID: D****제조년월 S/N: [제조번호]****MAC ADDRESS: XX-XX-XX-XX-XX-XX****CAN ICES-3(A)/NMB-3(A)****HANWHA TECHWIN CO.,LTD.****MADE IN KOREA****[PT03-002454B]**

Project No. 4789030365
 Compliance
 Review
 Conducted by: _____

File E158873

Page 1

Printed Name

Signature

Date

Standard SCC Requirements and Guidance - Product Certification Body Accreditation Program Edition/ Revision Date 2016-04-06

Clause/Par. Reference and Construction Requirement	Comply			Comments/Measurements	Inst. ID No.
	Yes	No	N/A		
9.2.3 CBs shall include dual language safety labeling within their product certification requirements, if so required by the standard or by the authority having jurisdiction.					
The manufacturer has confirmed they have the ability to include English and French safety labeling exactly as specified in the product standard; or, if NOT specified in the product standard, the ability to include English and French safety labelling consisting of markings associated with the signal words DANGER, WARNING, and CAUTION when required.	X			The ability of the manufacturer to include these markings was verified by either (1) visual inspection of the markings on the actual product or (2) draft of labels that will be applied to the product or (3) written confirmation from the customer of the markings that will appear on the product. If the product standard provides the exact translation, the evidence must match the exact translation. If the product standard does NOT provide the exact translation, the evidence must simply include both the English and French text (no verification of translation is required).	N/A

Project No. 4789030365

File E158873

Page 2

Compliance

Review

Conducted by:

Date

Printed Name

Signature

Clause/Par. Reference and Construction Requirement	Comply			Comments/Measurements	Inst. ID No.
	Yes	No	N/A		
Manufacturer has a method to manage distribution of products, IF all products with the Canadian certification mark are NOT going to include the dual language.	X			<p>Evaluation staff are to only verify that the manufacturer has a method to control distribution.</p> <p>Evaluation staff do not have to record the method of control nor are the evaluation staff expected to verify the effectiveness of the method of control. This requirement to verify that a method exists will be noted in the FUS Procedure. The UL Field Engineer will verify the method during surveillance.</p> <p>If the manufacturer is going to include the dual language on all products with the Canadian certification mark, then this item is N/A; no further action required.</p>	N/A

Test Record

Test Record No. 1

1. Test result relate only to the items tested.

2. Only the test listed were considered necessary.

The following tests were conducted:

Test	Testing Location/Comments
End Product Reference Page	
General Guidelines	
Input: Single-Phase (1.6.2)	
SELV Reliability Test Including Hazardous Voltage Measurements (2.2.2, 2.2.3, 2.2.4, Part 22 6.1)	
Determination of Working Voltage; Working Voltage Measurement (2.10.2)	
Loading - Wall and Ceiling Mounted Equipment (4.2.10)	
Battery (4.3.8)	
Heating (4.5.1, 1.4.12, 1.4.13)	
Component Failure (5.3.1, 5.3.4, 5.3.7)	

Test results are valid only for the tested equipment. These tests are considered representative of the products covered by this Test Report. The test methods and results of the above tests have been reviewed and found to be in accordance with the requirements in the Standard(s) referenced at the beginning of this Test Report.

The following tests were waived:

Test	Rationale for Waiving
Limited Power Source Measurements (2.5)	Supplied by LPS

The following supplements are provided as a part of this Test Record. NOTE: These supplements are only available to the Applicant via the CDA system.

Type	Supplement Id	Description
Attachment	2-01	Datasheet